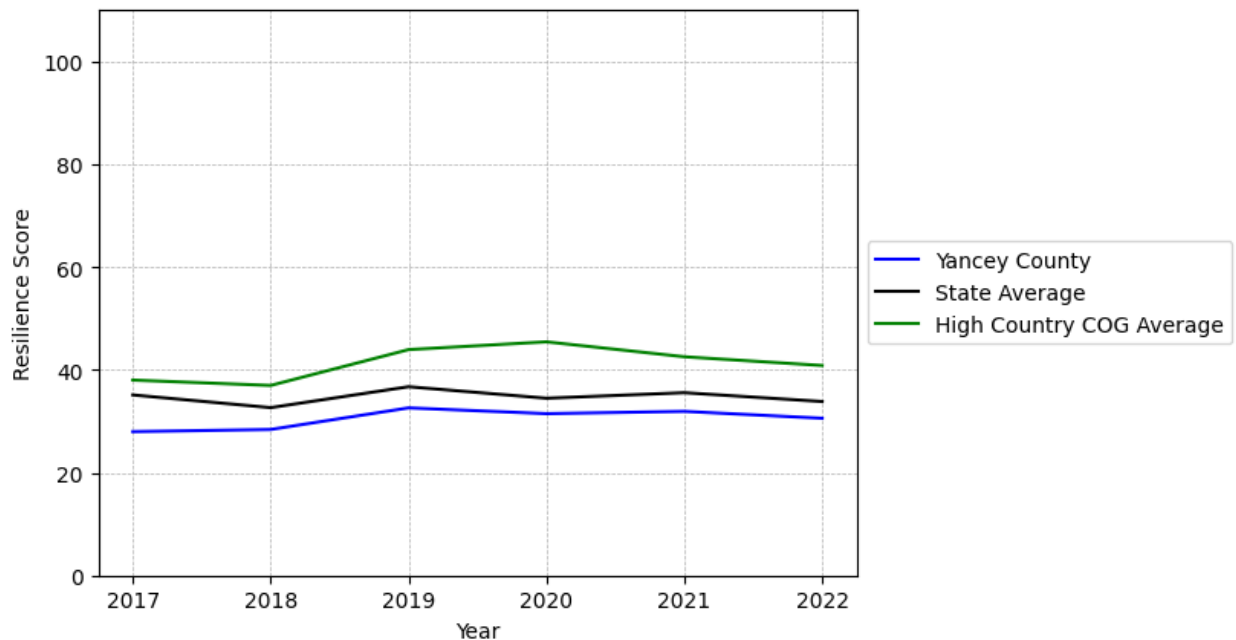


Yancey County Summary

Resilience Score: 30.58

In 2022, Yancey County achieved a Resilience Score of 30.58, which is average as compared to the North Carolina State average.

**Yancey County's Resilience Score Over Time
As Compared to the Region and State Averages**



Note: Resilience Scores are normalized from 1 to 100 with the most resilient county scoring 100. The Resilience Score is determined based on a county's performance relative to NC's other 99 counties.

Yancey County's Resilience Score is comprised of 9 distinct dimensions of resilience. Below are Yancey County's scores for 2022 on those 9 dimensions, and their rank relative to other North Carolina counties.

Business Community Health: 4.56

This component examines the strength and diversity of the local business community, including factors such as the number of businesses, employment levels, and industry diversity. Yancey County's performance on this dimension is fairly weak when compared to other North Carolina counties, ranking 92nd in the state.

Notable variables for Yancey County within this dimension include:

VARIABLE STRENGTH	FACTOR	YANCEY COUNTY VALUE	NC COUNTY AVERAGE VALUE
Strongest	Private Sector Diversity	0.414	0.28
2nd Strongest	Percentage of Companies in Science, Engineering, & Technology Industries	5.92%	6.13%
Bottom 10 in NC, Weakest	Ratio of Available Child Care Slots to Number of Children under Five	0.3	0.59

County Government Fiscal Strength: 34.44

This component looks at the financial health of local governments, including their ability to generate revenue, manage debt, and maintain adequate reserves to weather economic downturns. Yancey County's performance on this dimension is average when compared to other North Carolina counties, ranking 65th in the state.

Notable variables for Yancey County within this dimension include:

VARIABLE STRENGTH	FACTOR	YANCEY COUNTY VALUE	NC COUNTY AVERAGE VALUE
Strongest	Adjusted Tax Base	\$136,616	\$124,092
2nd Strongest	Debt Service Ratio of County Government	0.06	0.07
Weakest	County Sales Tax	\$5,372,431	\$31,151,902

Communication: 49.32

This component assesses the availability and quality of communication infrastructure, such as broadband internet access, which is crucial for businesses and residents to stay connected and resilient during disruptions. Yancey County's performance on this dimension is average when compared to other North Carolina counties, ranking 54th in the state.

Notable variables for Yancey County within this dimension include:

VARIABLE STRENGTH	FACTOR	YANCEY COUNTY VALUE	NC COUNTY AVERAGE VALUE
Top 10 in NC, Strongest	Broadband Availability	0.89	0.6
2nd Strongest	In-Vehicle High-Speed Mobile Data Availability	0.28	0.37
Bottom 10 in NC, Weakest	Percentage of Population without Smartphones	23.62%	17.22%

Housing & Transportation: 48.44

This component evaluates the accessibility and affordability of housing, as well as the availability of reliable transportation options, which are essential for a resilient workforce and economy. Yancey County's performance on this dimension is fairly weak when compared to other North Carolina counties, ranking 72nd in the state.

Notable variables for Yancey County within this dimension include:

VARIABLE STRENGTH	FACTOR	YANCEY COUNTY VALUE	NC COUNTY AVERAGE VALUE
Strongest	Percentage of Population without Vehicles	4.17%	5.75%
2nd Strongest	Percentage of Households with More Residents than Rooms	1.9%	2.1%
Weakest	Ratio of Average Estimated Home Value to Median Income	26.22	13.67

Healthcare: 28.78

The healthcare component examines the availability and quality of healthcare facilities, services, and professionals, which are critical for maintaining a healthy and productive workforce. Yancey County's performance on this dimension is average when compared to other North Carolina counties, ranking 41st in the state.

Notable variables for Yancey County within this dimension include:

VARIABLE STRENGTH	FACTOR	YANCEY COUNTY VALUE	NC COUNTY AVERAGE VALUE
Top 10 in NC, Strongest	Opioid Deaths per 100,000 Residents	16.6	38.73
2nd Strongest	Nursing Home Beds per 1,000 Residents of Age 65+	29.5	27.53

Weakest	Nurses per 10,000 Residents	66.14	262.64
----------------	-----------------------------	-------	--------

Community Cohesion: 60.74

This component looks at the strength of social networks, community engagement, and the ability of residents to work together to address challenges and support one another during times of adversity. Yancey County's performance on this dimension is average when compared to other North Carolina counties, ranking 43rd in the state.

Notable variables for Yancey County within this dimension include:

VARIABLE STRENGTH	FACTOR	YANCEY COUNTY VALUE	NC COUNTY AVERAGE VALUE
Top 10 in NC, Strongest	Property Crimes per 10,000 Residents	3.96	15.74
2nd Strongest	Violent Crimes per 10,000 Residents	1.09	3.07
Bottom 10 in NC, Weakest	Nonprofits Organizations per 1,000 Residents	0.45	3.17

Socioeconomics: 48.09

This component considers factors such as income levels, poverty rates, and inequality, which can impact a community's ability to withstand and recover from economic shocks. Yancey County's performance on this dimension is average when compared to other North Carolina counties, ranking 44th in the state.

Notable variables for Yancey County within this dimension include:

VARIABLE STRENGTH	FACTOR	YANCEY COUNTY VALUE	NC COUNTY AVERAGE VALUE
Strongest	Percentage of Households Spending more than 30% Income on Housing	20.31%	24.53%
2nd Strongest	Unemployment Rate (Q4)	3.3%	3.9%
Weakest	Gini Coefficient (Income Inequality)	0.47	0.46

Education: 51.42

This component evaluates the quality of educational institutions and the educational attainment levels of the local population, which play a crucial role in developing a skilled and adaptable workforce. Yancey County's performance on this dimension is average when compared to other North Carolina counties, ranking 41st in the state.

Notable variables for Yancey County within this dimension include:

VARIABLE STRENGTH	FACTOR	YANCEY COUNTY VALUE	NC COUNTY AVERAGE VALUE
Top 10 in NC, Strongest	Teacher Attrition Rate	0.07	0.12
2nd Strongest	Student to Teacher Ratio	13	14
Weakest	Dropout Rate	2.4%	1.65%

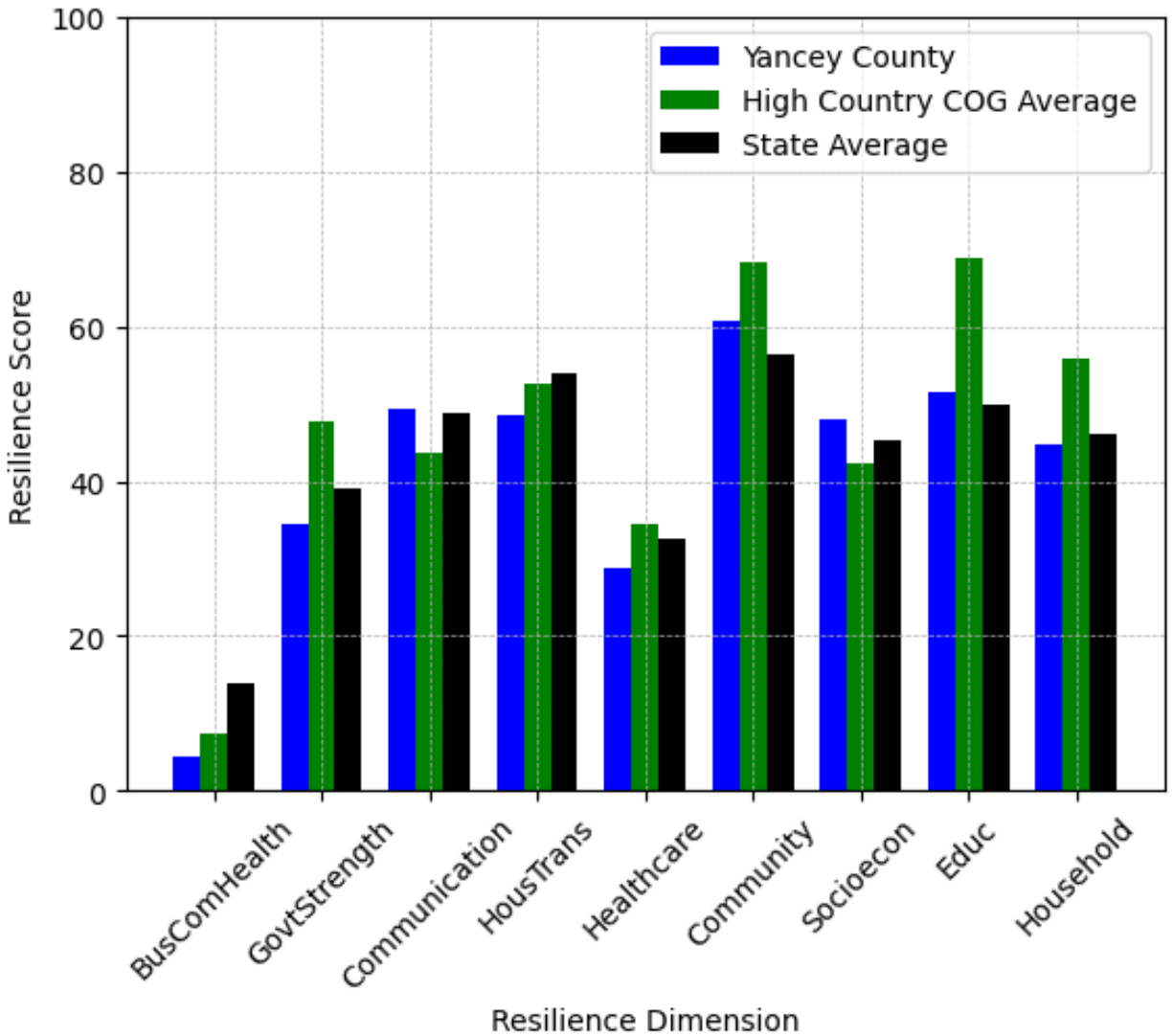
Household Characteristics: 44.79

This component examines factors such as the proportion of single-parent households, age distribution, and the proportion of individuals with disabilities, as these elements can influence a community's resilience and ability to recover from economic disruptions. Yancey County's performance on this dimension is average when compared to other North Carolina counties, ranking 52nd in the state.

Notable variables for Yancey County within this dimension include:

VARIABLE STRENGTH	FACTOR	YANCEY COUNTY VALUE	NC COUNTY AVERAGE VALUE
Strongest	Percentage of Population 17 and Younger	18.46%	20.37%
2nd Strongest	Percentage of Population with Limited English Proficiency	0.771%	1.454%
Weakest	Percentage of Population 65 and Older	26.16%	20.53%

Yancey County's Resilience Dimension Scores Over Time As Compared to the Region and State Averages



Note: Resilience Scores are normalized from 1 to 100 with the most resilient county scoring 100. The Resilience Score is determined based on a county's performance relative to NC's other 99 counties.

Notable Trends in Resilience Indicators, 2017-2022

NOTE: The key trends in the this section are identified based on change rates of at least .15 standard deviations over at least 5 years. Variables are positively oriented such that a positive trend indicates improved performance (e.g., 'improvement' in property crime is a lower crime rate, while 'decline' in property crime indicates a higher crime rate).

Trends in the Business Community Health dimension:

Total Employment Level: **719** (5-year change rate = **19.2%**, from 3,745 to 4,464)

↑ Change in rank from 87 to 86 in NC

Average Weekly Wages: **205 dollars** (5-year change rate = **32.18%**, from 637 to 842)

↑ Change in rank from 92 to 90 in NC

Real GDP in Current Dollars: **21,770 dollars** (5-year change rate = **5.73%**, from 379,660 to 401,430)

↑ Change in rank from 88 to 87 in NC

Trends in the County Government Fiscal Strength dimension:

Adjusted Tax Base: **-8,698 dollars** (5-year change rate = **-5.99%**, from 145,314 to 136,616)

↓ Change in rank from 12 to 27 in NC

County Sales Tax: **2,153,538 dollars** (5-year change rate = **66.9%**, from 3,218,894 to 5,372,431)

↓ Change in rank from 80 to 81 in NC

Trends in the Housing & Transportation dimension:

Ratio of Average Estimated Home Value to Median Income : **7.57** (5-year change rate = **40.56%**, from 18.66 to 26.22)

↓ Change in rank from 82 to 83 in NC

Average Available Rent Money less the Average HUD Fair Market Rent: **304.6 dollars** (5-year change rate = **63.71%**, from 478.1 to 782.7)

↑ Change in rank from 60 to 48 in NC

Trends in the Healthcare dimension:

Opioid Deaths per 100,000 Residents: **-0.3** (5-year change rate = **-1.78%**, from 16.9 to 16.6)

↑ Change in rank from 28 to 4 in NC

Nurses per 10,000 Residents: **-20.26** (5-year change rate = **-23.45%**, from 86.4 to 66.14)

↓ Change in rank from 82 to 88 in NC

Physicians per 10,000 Residents: **-0.16** (5-year change rate = **-2.22%**, from 7.2 to 7.04)

↓ Change in rank from 75 to 81 in NC

Mental Health Professionals per 10,000 Residents: **0.99** (5-year change rate = **22.35%**, from 4.43 to 5.42)

↑ Change in rank from 65 to 52 in NC

Trends in the Community Cohesion dimension:

Violent Crimes per 10,000 Residents: **0.43** (4-year change rate = **64.49%**, from 0.66 to 1.09)

↓ Change in rank from 11 to 13 in NC

Nonprofits Organizations per 1,000 Residents: **0.23** (5-year change rate = **99.57%**, from 0.23 to 0.45)

↓ Change in rank from 99 to 100 in NC

Trends in the Socioeconomics dimension:

Unemployment Rate (Q4): **-0.7 percent** (5-year change rate = **-16.67%**, from 4 to 3.3)

↑ Change in rank from 34 to 29 in NC

Median Household Income: **14,200 dollars** (5-year change rate = **29.16%**, from 48,700 to 62,900)

↑ Change in rank from 66 to 60 in NC

Trends in the Education dimension:

Graduation Percentage: **-4.1 percent** (5-year change rate = **-4.47%**, from 91.8 to 87.7)

↓ Change in rank from 15 to 59 in NC

Dropout Rate: **1.29 percent** (5-year change rate = **116.15%**, from 1.11 to 2.4)

↓ Change in rank from 8 to 82 in NC

3rd Grade Reading Proficiency: **-9 percent** (5-year change rate = **-15.18%**, from 59.3 to 50.3)

→ No change in rank

Data Advisements:

- This county has a population under 20,000 residents according to the US Census Bureau; in low population areas, some variable estimates can be less stable and more sensitive to changes.
- Availability of Broadband Services is not available for 2022 and was excluded from calculating this county's dimension and resilience score.
- Adoption Rate of Broadband Services is not available for 2022 and was excluded from calculating this county's dimension and resilience score.