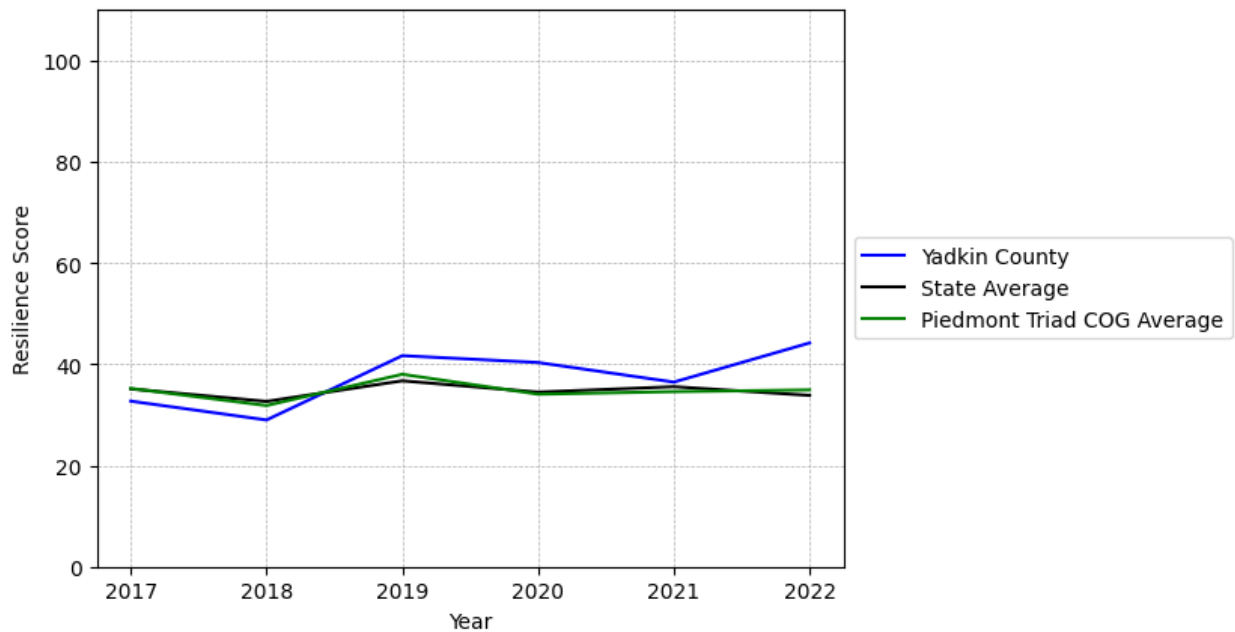


Yadkin County Summary

Resilience Score: 44.2

In 2022, Yadkin County achieved a Resilience Score of 44.2, which is fairly strong as compared to the North Carolina State average.

**Yadkin County's Resilience Score Over Time
As Compared to the Region and State Averages**



Note: Resilience Scores are normalized from 1 to 100 with the most resilient county scoring 100. The Resilience Score is determined based on a county's performance relative to NC's other 99 counties.

Yadkin County's Resilience Score is comprised of 9 distinct dimensions of resilience. Below are Yadkin County's scores for 2022 on those 9 dimensions, and their rank relative to other North Carolina counties.

Business Community Health: 9.58

This component examines the strength and diversity of the local business community, including factors such as the number of businesses, employment levels, and industry diversity. Yadkin County's performance on this dimension is average when compared to other North Carolina counties, ranking 60th in the state.

Notable variables for Yadkin County within this dimension include:

VARIABLE STRENGTH	FACTOR	YADKIN COUNTY VALUE	NC COUNTY AVERAGE VALUE
Strongest	Private Sector Diversity	0.349	0.28
2nd Strongest	Ratio of Available Child Care Slots to Number of Children under Five	0.67	0.59
Weakest	Science, Engineering, & Technology Industries Employment Percentage	0.4%	1.79%

County Government Fiscal Strength: 60.18

This component looks at the financial health of local governments, including their ability to generate revenue, manage debt, and maintain adequate reserves to weather economic downturns. Yadkin County's performance on this dimension is fairly strong when compared to other North Carolina counties, ranking 18th in the state.

Notable variables for Yadkin County within this dimension include:

VARIABLE STRENGTH	FACTOR	YADKIN COUNTY VALUE	NC COUNTY AVERAGE VALUE
Top 10 in NC, Strongest	Capital Assets Condition Ratio of County Government	0.65	0.51
2nd Strongest	Operations Ratio of County Government	1.22	1.11
Weakest	Adjusted Tax Base	\$84,847	\$124,092

Communication: 64.31

This component assesses the availability and quality of communication infrastructure, such as broadband internet access, which is crucial for businesses and residents to stay connected and resilient during disruptions. Yadkin County's performance on this dimension is fairly strong when compared to other North Carolina counties, ranking 26th in the state.

Notable variables for Yadkin County within this dimension include:

VARIABLE STRENGTH	FACTOR	YADKIN COUNTY VALUE	NC COUNTY AVERAGE VALUE
Strongest	Broadband Availability	0.83	0.6
2nd Strongest	Local High-Speed Mobile Data Availability	0.88	0.66
Weakest	Percentage of Population without Smartphones	20.61%	17.22%

Housing & Transportation: 60.86

This component evaluates the accessibility and affordability of housing, as well as the availability of reliable transportation options, which are essential for a resilient workforce and economy. Yadkin County's performance on this dimension is average when compared to other North Carolina counties, ranking 46th in the state.

Notable variables for Yadkin County within this dimension include:

VARIABLE STRENGTH	FACTOR	YADKIN COUNTY VALUE	NC COUNTY AVERAGE VALUE
Strongest	Percentage of Owner-Occupied Homes	66.48%	57.87%
2nd Strongest	Average Available Rent Money less the Average HUD Fair Market Rent	\$1,051.2	\$799.87
Weakest	Percentage of People Driving Alone to Work	88.67%	86.36%

Healthcare: 37.64

The healthcare component examines the availability and quality of healthcare facilities, services, and professionals, which are critical for maintaining a healthy and productive workforce. Yadkin County's performance on this dimension is fairly strong when compared to other North Carolina counties, ranking 15th in the state.

Notable variables for Yadkin County within this dimension include:

VARIABLE STRENGTH	FACTOR	YADKIN COUNTY VALUE	NC COUNTY AVERAGE VALUE
Top 10 in NC, Strongest	Nursing Home Beds per 1,000 Residents of Age 65+	64.95	27.53
2nd Strongest	Mental Health	4.85	6.6

	Professionals per 10,000 Residents		
Weakest	Physicians per 10,000 Residents	3.77	16.05

Community Cohesion: 67.44

This component looks at the strength of social networks, community engagement, and the ability of residents to work together to address challenges and support one another during times of adversity. Yadkin County's performance on this dimension is fairly strong when compared to other North Carolina counties, ranking 25th in the state.

Notable variables for Yadkin County within this dimension include:

VARIABLE STRENGTH	FACTOR	YADKIN COUNTY VALUE	NC COUNTY AVERAGE VALUE
Top 10 in NC, Strongest	Percentage of Inactive Voters	7.64%	11.3%
2nd Strongest	Violent Crimes per 10,000 Residents	1.61	3.07
Weakest	Nonprofits Organizations per 1,000 Residents	2.08	3.17

Socioeconomics: 46.31

This component considers factors such as income levels, poverty rates, and inequality, which can impact a community's ability to withstand and recover from economic shocks. Yadkin County's performance on this dimension is average when compared to other North Carolina counties, ranking 49th in the state.

Notable variables for Yadkin County within this dimension include:

VARIABLE STRENGTH	FACTOR	YADKIN COUNTY VALUE	NC COUNTY AVERAGE VALUE
Strongest	Unemployment Rate (Q4)	3.3%	3.9%
2nd Strongest	Median Household Income	\$77,4	\$70,088
Bottom 10 in NC, Weakest	Population 25+ with at least a Bachelor's Degree	14.11%	24.4%

Education: 57.43

This component evaluates the quality of educational institutions and the educational attainment levels of the local population, which play a crucial role in developing a skilled and adaptable workforce. Yadkin County's performance on this dimension is fairly strong when compared to other North Carolina counties, ranking 25th in the state.

Notable variables for Yadkin County within this dimension include:

VARIABLE STRENGTH	FACTOR	YADKIN COUNTY VALUE	NC COUNTY AVERAGE VALUE
Top 10 in NC, Strongest	Dropout Rate	0.12%	1.65%
2nd Strongest	Postsecondary Enrollment Percentage	27.87%	25.48%
Bottom 10 in NC, Weakest	Local LEA Financial Resources (per ADM)	\$4,473	\$8,683

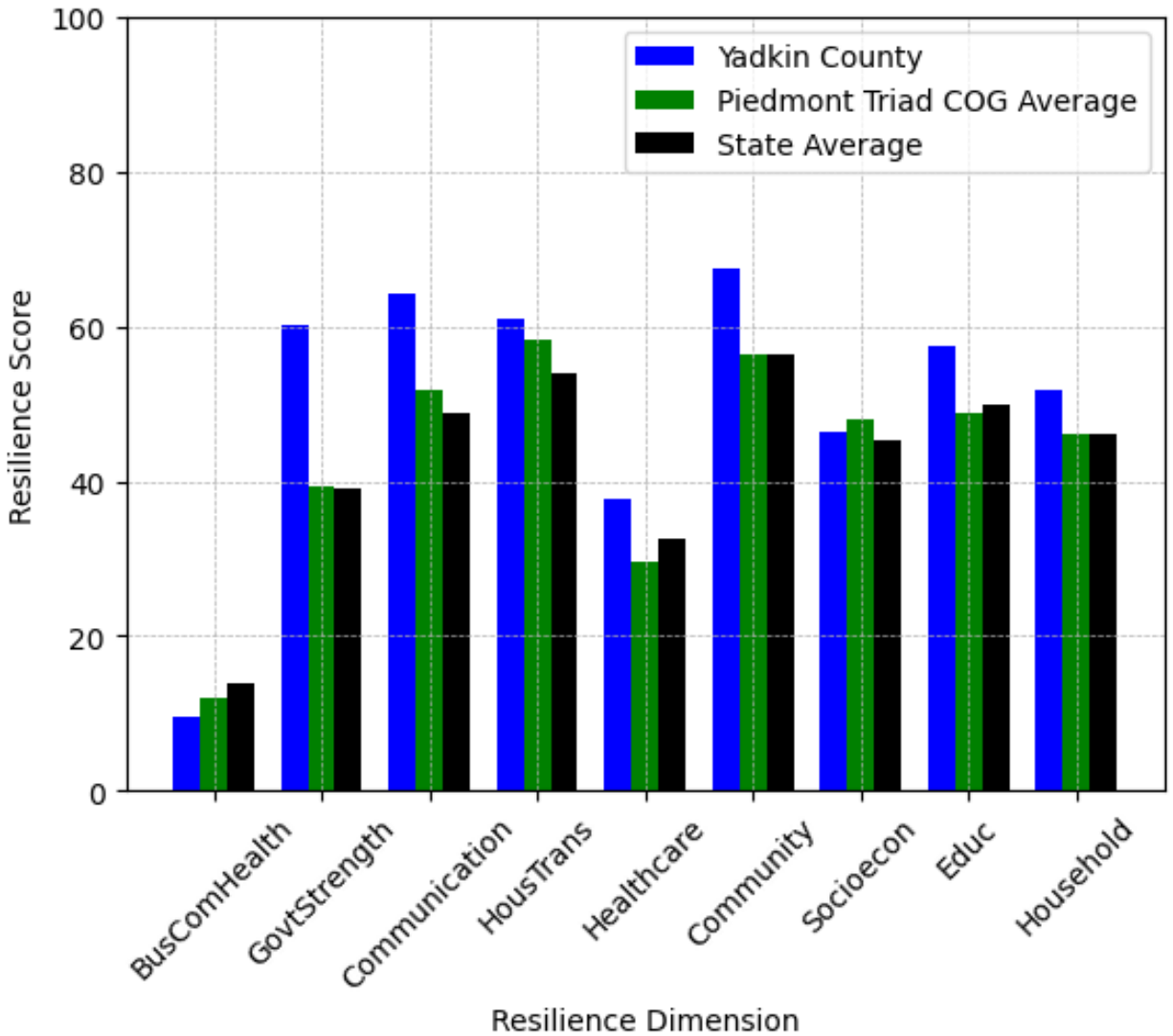
Household Characteristics: 51.77

This component examines factors such as the proportion of single-parent households, age distribution, and the proportion of individuals with disabilities, as these elements can influence a community's resilience and ability to recover from economic disruptions. Yadkin County's performance on this dimension is fairly strong when compared to other North Carolina counties, ranking 24th in the state.

Notable variables for Yadkin County within this dimension include:

VARIABLE STRENGTH	FACTOR	YADKIN COUNTY VALUE	NC COUNTY AVERAGE VALUE
Strongest	Percentage of Single Parent Households	26.34%	36.132%
2nd Strongest	Percentage of Population with a Disability	15.592%	16.566%
Weakest	Percentage of Population with Limited English Proficiency	1.542%	1.454%

Yadkin County's Resilience Dimension Scores Over Time As Compared to the Region and State Averages



Note: Resilience Scores are normalized from 1 to 100 with the most resilient county scoring 100. The Resilience Score is determined based on a county's performance relative to NC's other 99 counties.

Notable Trends in Resilience Indicators, 2017-2022

NOTE: The key trends in the this section are identified based on change rates of at least .15 standard deviations over at least 5 years. Variables are positively oriented such that a positive trend indicates improved performance (e.g., 'improvement' in property crime is a lower crime rate, while 'decline' in property crime indicates a higher crime rate).

Trends in the Business Community Health dimension:

Total Employment Level: **235** (5-year change rate = **2.39%**, from 9,837 to 10,071)

↑ Change in rank from 67 to 66 in NC

Average Weekly Wages: **176 dollars** (5-year change rate = **25.43%**, from 692 to 868)

↓ Change in rank from 68 to 72 in NC

Real GDP in Current Dollars: **-38,036 dollars** (5-year change rate = **-3.9%**, from 976,183 to 938,147)

→ No change in rank

Trends in the County Government Fiscal Strength dimension:

Adjusted Tax Base: **11,524 dollars** (5-year change rate = **15.72%**, from 73,323 to 84,847)

↓ Change in rank from 72 to 78 in NC

County Sales Tax: **2,760,180 dollars** (5-year change rate = **45.44%**, from 6,074,323 to 8,834,503)

→ No change in rank

Trends in the Housing & Transportation dimension:

Ratio of Average Estimated Home Value to Median Income : **2.61** (5-year change rate = **31.78%**, from 8.2 to 10.81)

↓ Change in rank from 61 to 62 in NC

Average Available Rent Money less the Average HUD Fair Market Rent: **474.3 dollars** (5-year change rate = **82.22%**, from 576.9 to 1,051.2)

↑ Change in rank from 38 to 19 in NC

Trends in the Healthcare dimension:

Opioid Deaths per 100,000 Residents: **21.3** (5-year change rate = **100.47%**, from 21.2 to 42.5)

↓ Change in rank from 44 to 66 in NC

Nurses per 10,000 Residents: **13.17** (5-year change rate = **17.7%**, from 74.4 to 87.57)

↑ Change in rank from 85 to 82 in NC

Physicians per 10,000 Residents: **-0.77** (5-year change rate = **-16.96%**, from 4.54 to 3.77)

↓ Change in rank from 86 to 89 in NC

Mental Health Professionals per 10,000 Residents: **1.38** (5-year change rate = **39.77%**, from 3.47 to 4.85)

↑ Change in rank from 81 to 59 in NC

Trends in the Community Cohesion dimension:

Violent Crimes per 10,000 Residents: **-1.88** (4-year change rate = **-53.94%**, from 3.49 to 1.61)

↑ Change in rank from 73 to 27 in NC

Property Crimes per 10,000 Residents: **-8.62** (4-year change rate = **-41.73%**, from 20.64 to 12.03)

↑ Change in rank from 58 to 32 in NC

Nonprofits Organizations per 1,000 Residents: **0.77** (5-year change rate = **59.09%**, from 1.3 to 2.08)

↑ Change in rank from 91 to 77 in NC

Trends in the Socioeconomics dimension:

Unemployment Rate (Q4): **-0.3 percent** (5-year change rate = **-9.26%**, from 3.6 to 3.3)

↓ Change in rank from 9 to 20 in NC

Median Household Income: **20,500 dollars** (5-year change rate = **36.03%**, from 56,900 to 77,400)

↑ Change in rank from 33 to 27 in NC

Trends in the Education dimension:

Graduation Percentage: **2.4 percent** (5-year change rate = **2.75%**, from 87.3 to 89.7)

↑ Change in rank from 47 to 34 in NC

Dropout Rate: **-0.78 percent** (5-year change rate = **-86.43%**, from 0.91 to 0.12)

↑ Change in rank from 6 to 3 in NC

3rd Grade Reading Proficiency: **-8.4 percent** (5-year change rate = **-14.31%**, from 58.7 to 50.3)

↑ Change in rank from 29 to 26 in NC

Data Advisements:

- Availability of Broadband Services is not available for 2022 and was excluded from calculating this county's dimension and resilience score.
- Adoption Rate of Broadband Services is not available for 2022 and was excluded from calculating this county's dimension and resilience score.