

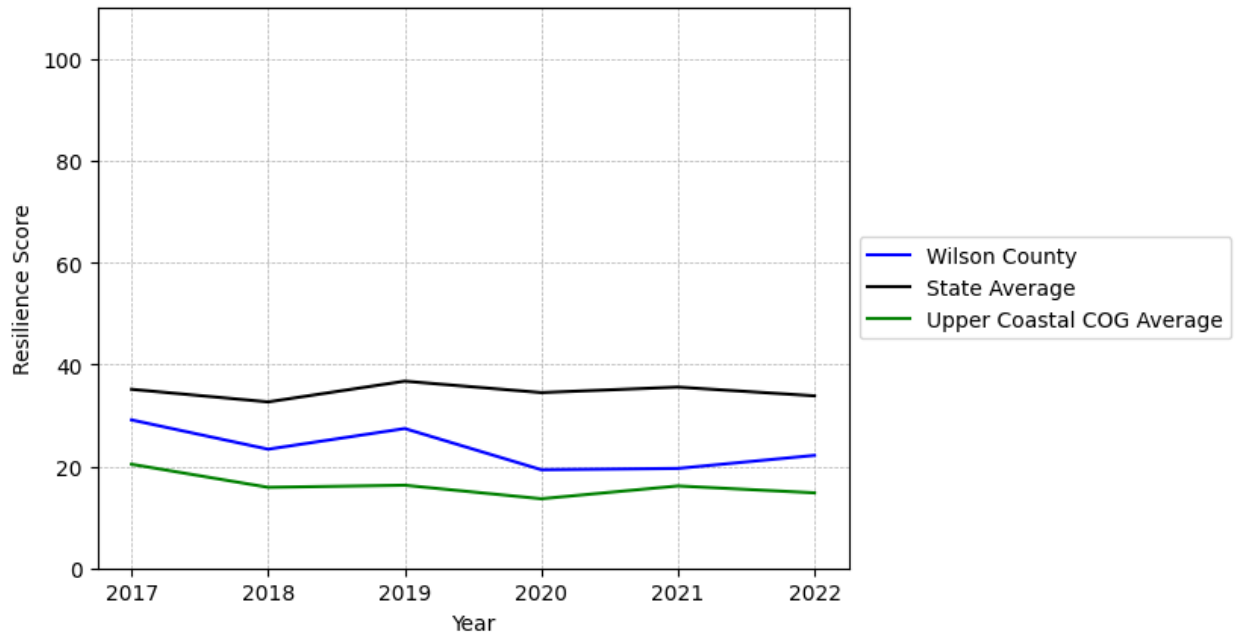
# Wilson County Summary

---

**Resilience Score: 22.15**

In 2022, Wilson County achieved a Resilience Score of 22.15, which is fairly weak as compared to the North Carolina State average.

**Wilson County's Resilience Score Over Time  
As Compared to the Region and State Averages**



*Note: Resilience Scores are normalized from 1 to 100 with the most resilient county scoring 100. The Resilience Score is determined based on a county's performance relative to NC's other 99 counties.*

Wilson County's Resilience Score is comprised of 9 distinct dimensions of resilience. Below are Wilson County's scores for 2022 on those 9 dimensions, and their rank relative to other North Carolina counties.

### **Business Community Health: 13.8**

This component examines the strength and diversity of the local business community, including factors such as the number of businesses, employment levels, and industry diversity. Wilson County's performance on this dimension is average when compared to other North Carolina counties, ranking 34th in the state.

Notable variables for Wilson County within this dimension include:

<b>VARIABLE STRENGTH</b>	<b>FACTOR</b>	<b>WILSON COUNTY VALUE</b>	<b>NC COUNTY AVERAGE VALUE</b>
<b>Strongest</b>	Average Weekly Wages	\$1,021	\$951
<b>2nd Strongest</b>	Ratio of Available Child Care Slots to Number of Children under Five	0.69	0.59
<b>Weakest</b>	Private Sector Diversity	0.203	0.28

---

### **County Government Fiscal Strength: 30.97**

This component looks at the financial health of local governments, including their ability to generate revenue, manage debt, and maintain adequate reserves to weather economic downturns. Wilson County's performance on this dimension is fairly weak when compared to other North Carolina counties, ranking 72nd in the state.

Notable variables for Wilson County within this dimension include:

<b>VARIABLE STRENGTH</b>	<b>FACTOR</b>	<b>WILSON COUNTY VALUE</b>	<b>NC COUNTY AVERAGE VALUE</b>
<b>Strongest</b>	Debt Service Ratio of County Government	0.03	0.07
<b>2nd Strongest</b>	Solvency Ratio of County Government	48.34	46.7
<b>Weakest</b>	Adjusted Tax Base	\$82,105	\$124,092

---

### **Communication: 65.44**

This component assesses the availability and quality of communication infrastructure, such as broadband internet access, which is crucial for businesses and residents to stay connected and resilient during disruptions. Wilson County's performance on this dimension is fairly strong when compared to other North Carolina counties, ranking 23rd in the state.

Notable variables for Wilson County within this dimension include:

VARIABLE STRENGTH	FACTOR	WILSON COUNTY VALUE	NC COUNTY AVERAGE VALUE
<b>Top 10 in NC, Strongest</b>	Broadband Availability	0.88	0.6
<b>2nd Strongest</b>	Local High-Speed Mobile Data Availability	0.88	0.66
<b>Weakest</b>	Percentage of Population without Smartphones	23.02%	17.22%

### Housing & Transportation: 50.71

This component evaluates the accessibility and affordability of housing, as well as the availability of reliable transportation options, which are essential for a resilient workforce and economy. Wilson County's performance on this dimension is average when compared to other North Carolina counties, ranking 66th in the state.

Notable variables for Wilson County within this dimension include:

VARIABLE STRENGTH	FACTOR	WILSON COUNTY VALUE	NC COUNTY AVERAGE VALUE
<b>Strongest</b>	Average Available Rent Money less the Average HUD Fair Market Rent	\$978.9	\$799.87
<b>2nd Strongest</b>	Ratio of Average Estimated Home Value to Median Income	4.76	13.67
<b>Bottom 10 in NC, Weakest</b>	Percentage of Population without Vehicles	9.2%	5.75%

### Healthcare: 25.99

The healthcare component examines the availability and quality of healthcare facilities, services, and professionals, which are critical for maintaining a healthy and productive workforce. Wilson County's performance on this dimension is average when compared to other North Carolina counties, ranking 51st in the state.

Notable variables for Wilson County within this dimension include:

VARIABLE STRENGTH	FACTOR	WILSON COUNTY VALUE	NC COUNTY AVERAGE VALUE
<b>Strongest</b>	Nurses per 10,000 Residents	232.13	262.64
<b>2nd Strongest</b>	Physicians per 10,000 Residents	14.9	16.05
<b>Weakest</b>	Mental Health	4.75	6.6

---

Professionals per 10,000 Residents
------------------------------------

---

### Community Cohesion: 44.52

This component looks at the strength of social networks, community engagement, and the ability of residents to work together to address challenges and support one another during times of adversity. Wilson County's performance on this dimension is fairly weak when compared to other North Carolina counties, ranking 79th in the state.

Notable variables for Wilson County within this dimension include:

VARIABLE STRENGTH	FACTOR	WILSON COUNTY VALUE	NC COUNTY AVERAGE VALUE
Strongest	Nonprofits Organizations per 1,000 Residents	3.82	3.17
2nd Strongest	Property Crimes per 10,000 Residents	17.24	15.74
Weakest	Yearly Population Change Percentage	-0.559%	0.906%

---

### Socioeconomics: 24.98

This component considers factors such as income levels, poverty rates, and inequality, which can impact a community's ability to withstand and recover from economic shocks. Wilson County's performance on this dimension is fairly weak when compared to other North Carolina counties, ranking 81st in the state.

Notable variables for Wilson County within this dimension include:

VARIABLE STRENGTH	FACTOR	WILSON COUNTY VALUE	NC COUNTY AVERAGE VALUE
Strongest	Median Household Income	\$73,1	\$70,088
2nd Strongest	Percentage of Households with Income over \$200k	4.22%	5.28%
Weakest	Total Percentage of Population Below 150% Poverty Line	34.98%	25.93%

---

### Education: 27.44

This component evaluates the quality of educational institutions and the educational attainment levels of the local population, which play a crucial role in developing a skilled and adaptable workforce. Wilson County's performance on this dimension is weak when compared to other North Carolina counties, ranking 85th in the state.

Notable variables for Wilson County within this dimension include:

VARIABLE STRENGTH	FACTOR	WILSON COUNTY VALUE	NC COUNTY AVERAGE VALUE
Strongest	Dropout Rate	1.47%	1.65%
2nd Strongest	Local LEA Financial Resources (per ADM)	\$6,553	\$8,683
Bottom 10 in NC	Student to Teacher Ratio	16	14
Bottom 10 in NC, Weakest	Graduation Percentage	79.8%	88.03%

---

### Household Characteristics: 40.6

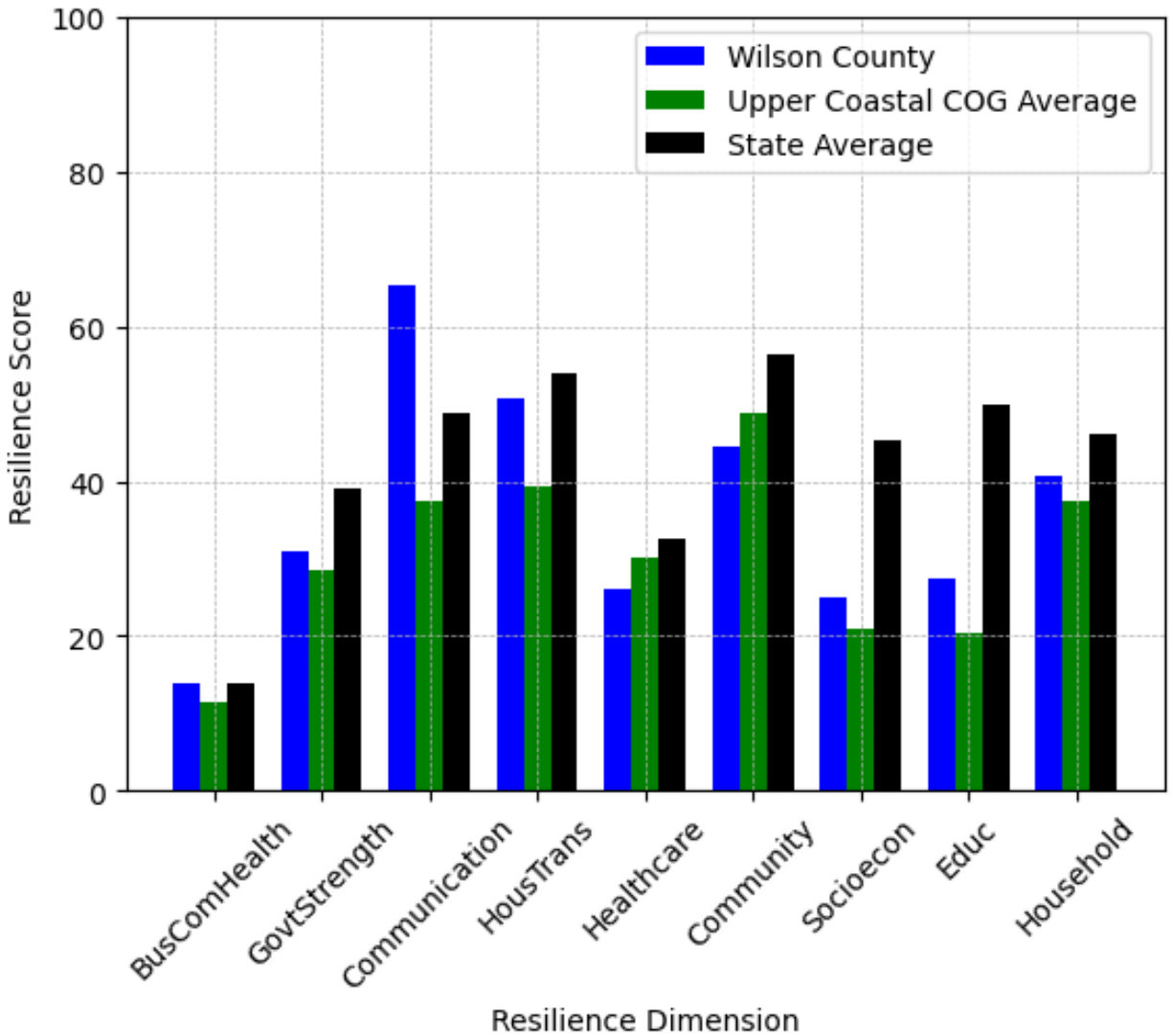
This component examines factors such as the proportion of single-parent households, age distribution, and the proportion of individuals with disabilities, as these elements can influence a community's resilience and ability to recover from economic disruptions. Wilson County's performance on this dimension is average when compared to other North Carolina counties, ranking 68th in the state.

Notable variables for Wilson County within this dimension include:

VARIABLE STRENGTH	FACTOR	WILSON COUNTY VALUE	NC COUNTY AVERAGE VALUE
Strongest	Percentage of Population with a Disability	14.78%	16.566%
2nd Strongest	Percentage of Population 65 and Older	18.93%	20.53%
Weakest	Percentage of Population 17 and Younger	22.78%	20.37%

---

## Wilson County's Resilience Dimension Scores Over Time As Compared to the Region and State Averages



*Note: Resilience Scores are normalized from 1 to 100 with the most resilient county scoring 100. The Resilience Score is determined based on a county's performance relative to NC's other 99 counties.*

## **Notable Trends in Resilience Indicators, 2017-2022**

*NOTE: The key trends in the this section are identified based on change rates of at least .15 standard deviations over at least 5 years. Variables are positively oriented such that a positive trend indicates improved performance (e.g., 'improvement' in property crime is a lower crime rate, while 'decline' in property crime indicates a higher crime rate).*

### **Trends in the Business Community Health dimension:**

Total Employment Level: **-892** (5-year change rate = **-2.43%**, from 36,739 to 35,847)

↓ Change in rank from 27 to 30 in NC

Average Weekly Wages: **185 dollars** (5-year change rate = **22.13%**, from 836 to 1,021)

↓ Change in rank from 17 to 18 in NC

Real GDP in Current Dollars: **-281,916 dollars** (5-year change rate = **-7.01%**, from 4,021,970 to 3,740,054)

↓ Change in rank from 28 to 30 in NC

### **Trends in the County Government Fiscal Strength dimension:**

Adjusted Tax Base: **3,888 dollars** (5-year change rate = **4.97%**, from 78,217 to 82,105)

↓ Change in rank from 59 to 86 in NC

County Sales Tax: **5,924,233 dollars** (5-year change rate = **37.35%**, from 15,861,109 to 21,785,342)

↓ Change in rank from 34 to 39 in NC

### **Trends in the Housing & Transportation dimension:**

Ratio of Average Estimated Home Value to Median Income : **1.05** (5-year change rate = **28.15%**, from 3.72 to 4.76)

↓ Change in rank from 30 to 31 in NC

Average Available Rent Money less the Average HUD Fair Market Rent: **647.8 dollars** (5-year change rate = **195.65%**, from 331.1 to 978.9)

↑ Change in rank from 92 to 26 in NC

**Trends in the Healthcare dimension:**

Opioid Deaths per 100,000 Residents: **17.1** (5-year change rate = **92.93%**, from 18.4 to 35.5)

↓ Change in rank from 33 to 45 in NC

Nurses per 10,000 Residents: **-38.83** (5-year change rate = **-14.33%**, from 270.96 to 232.13)

↓ Change in rank from 28 to 34 in NC

Physicians per 10,000 Residents: **-1.36** (5-year change rate = **-8.36%**, from 16.26 to 14.9)

↓ Change in rank from 38 to 44 in NC

**Trends in the Community Cohesion dimension:**

Violent Crimes per 10,000 Residents: **-0.16** (4-year change rate = **-3.97%**, from 3.91 to 3.75)

↑ Change in rank from 78 to 70 in NC

Property Crimes per 10,000 Residents: **-10.94** (4-year change rate = **-38.82%**, from 28.19 to 17.24)

↑ Change in rank from 79 to 67 in NC

Nonprofits Organizations per 1,000 Residents: **-3.02** (5-year change rate = **-44.16%**, from 6.84 to 3.82)

↓ Change in rank from 2 to 31 in NC

**Trends in the Socioeconomics dimension:**

Unemployment Rate (Q4): **-1.8 percent** (5-year change rate = **-27.04%**, from 6.5 to 4.8)

↑ Change in rank from 92 to 84 in NC



Median Household Income: **26,600 dollars** (5-year change rate = **57.2%**, from 46,500 to 73,100)

↑ Change in rank from 75 to 36 in NC

**Trends in the Education dimension:**

Graduation Percentage: **5.8 percent** (5-year change rate = **7.84%**, from 74 to 79.8)

↑ Change in rank from 99 to 95 in NC

Dropout Rate: **-2.13 percent** (5-year change rate = **-59.12%**, from 3.6 to 1.47)

↑ Change in rank from 92 to 44 in NC

3rd Grade Reading Proficiency: **-7.9 percent** (5-year change rate = **-16.02%**, from 49.3 to 41.4)

↑ Change in rank from 73 to 58 in NC

**Data Advisements:**

- Availability of Broadband Services is not available for 2022 and was excluded from calculating this county's dimension and resilience score.
- Adoption Rate of Broadband Services is not available for 2022 and was excluded from calculating this county's dimension and resilience score.