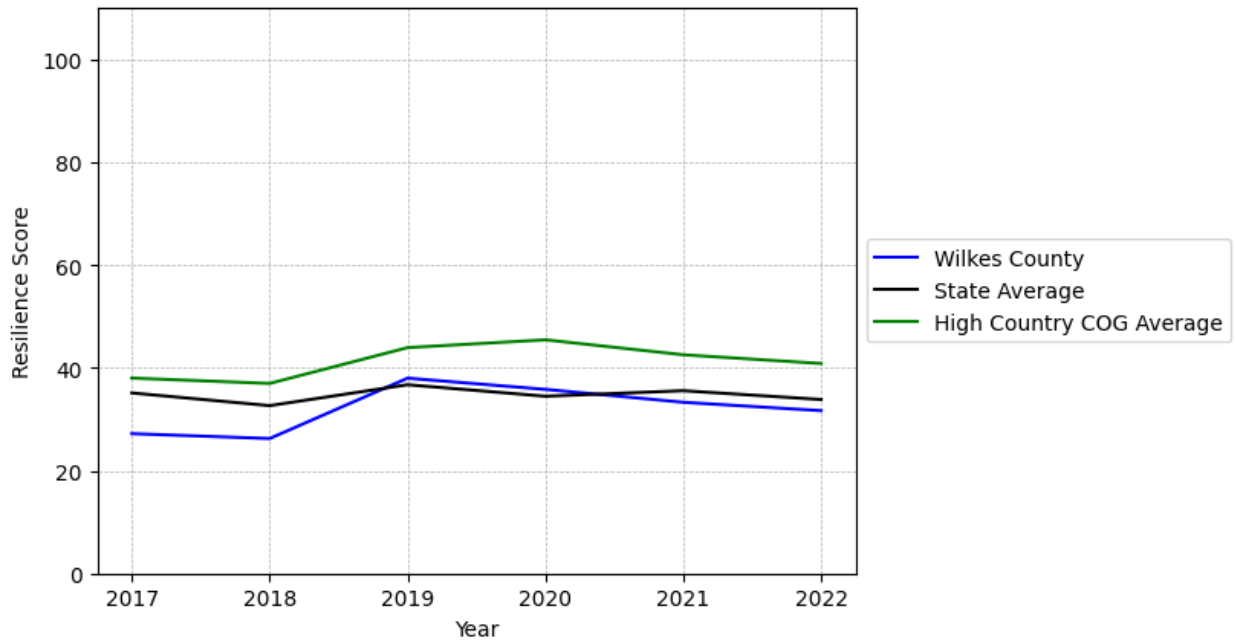


Wilkes County Summary

Resilience Score: 31.67

In 2022, Wilkes County achieved a Resilience Score of 31.67, which is average as compared to the North Carolina State average.

**Wilkes County's Resilience Score Over Time
As Compared to the Region and State Averages**



Note: Resilience Scores are normalized from 1 to 100 with the most resilient county scoring 100. The Resilience Score is determined based on a county's performance relative to NC's other 99 counties.

Wilkes County's Resilience Score is comprised of 9 distinct dimensions of resilience. Below are Wilkes County's scores for 2022 on those 9 dimensions, and their rank relative to other North Carolina counties.

Business Community Health: 4.51

This component examines the strength and diversity of the local business community, including factors such as the number of businesses, employment levels, and industry diversity. Wilkes County's performance on this dimension is fairly weak when compared to other North Carolina counties, ranking 93rd in the state.

Notable variables for Wilkes County within this dimension include:

VARIABLE STRENGTH	FACTOR	WILKES COUNTY VALUE	NC COUNTY AVERAGE VALUE
Strongest	Science, Engineering, & Technology Industries Employment Percentage	1.4%	1.79%
2nd Strongest	Real GDP in Current Dollars	\$2,459,893	\$6,092,555
Weakest	Ratio of Available Child Care Slots to Number of Children under Five	0.39	0.59

County Government Fiscal Strength: 45.78

This component looks at the financial health of local governments, including their ability to generate revenue, manage debt, and maintain adequate reserves to weather economic downturns. Wilkes County's performance on this dimension is average when compared to other North Carolina counties, ranking 44th in the state.

Notable variables for Wilkes County within this dimension include:

VARIABLE STRENGTH	FACTOR	WILKES COUNTY VALUE	NC COUNTY AVERAGE VALUE
Strongest	Debt Service Ratio of County Government	0.04	0.07
2nd Strongest	Quick Ratio of County Government	17.95	16.4
Weakest	Operations Ratio of County Government	1.06	1.11

Communication: 41.84

This component assesses the availability and quality of communication infrastructure, such as broadband internet access, which is crucial for businesses and residents to stay connected and resilient during disruptions. Wilkes County's performance on this dimension is average when compared to other North Carolina counties, ranking 73rd in the state.

Notable variables for Wilkes County within this dimension include:

VARIABLE STRENGTH	FACTOR	WILKES COUNTY VALUE	NC COUNTY AVERAGE VALUE
Top 10 in NC, Strongest	Broadband Availability	0.84	0.6
2nd Strongest	Percentage of Population without Smartphones	21.08%	17.22%
Weakest	Local High-Speed Mobile Data Availability	0.39	0.66

Housing & Transportation: 60.6

This component evaluates the accessibility and affordability of housing, as well as the availability of reliable transportation options, which are essential for a resilient workforce and economy. Wilkes County's performance on this dimension is average when compared to other North Carolina counties, ranking 47th in the state.

Notable variables for Wilkes County within this dimension include:

VARIABLE STRENGTH	FACTOR	WILKES COUNTY VALUE	NC COUNTY AVERAGE VALUE
Strongest	Percentage of Owner-Occupied Homes	62.67%	57.87%
2nd Strongest	Percentage of Households with More Residents than Rooms	1.48%	2.1%
Weakest	Percentage of Homes Built Before 1980	50.34%	40.9%

Healthcare: 25.03

The healthcare component examines the availability and quality of healthcare facilities, services, and professionals, which are critical for maintaining a healthy and productive workforce. Wilkes County's performance on this dimension is average when compared to other North Carolina counties, ranking 55th in the state.

Notable variables for Wilkes County within this dimension include:

VARIABLE STRENGTH	FACTOR	WILKES COUNTY VALUE	NC COUNTY AVERAGE VALUE
Strongest	Opioid Deaths per 100,000 Residents	32.2	38.73
2nd Strongest	Nursing Home Beds per 1,000 Residents of Age	27.87	27.53

Weakest	65+ Nurses per 10,000 Residents	127.98	262.64
----------------	---------------------------------------	--------	--------

Community Cohesion: 66.05

This component looks at the strength of social networks, community engagement, and the ability of residents to work together to address challenges and support one another during times of adversity. Wilkes County's performance on this dimension is fairly strong when compared to other North Carolina counties, ranking 30th in the state.

Notable variables for Wilkes County within this dimension include:

VARIABLE STRENGTH	FACTOR	WILKES COUNTY VALUE	NC COUNTY AVERAGE VALUE
Top 10 in NC, Strongest	Percentage of Inactive Voters	8.22%	11.3%
2nd Strongest	Property Crimes per 10,000 Residents	13.34	15.74
Weakest	Nonprofits Organizations per 1,000 Residents	3.13	3.17

Socioeconomics: 37.37

This component considers factors such as income levels, poverty rates, and inequality, which can impact a community's ability to withstand and recover from economic shocks. Wilkes County's performance on this dimension is average when compared to other North Carolina counties, ranking 64th in the state.

Notable variables for Wilkes County within this dimension include:

VARIABLE STRENGTH	FACTOR	WILKES COUNTY VALUE	NC COUNTY AVERAGE VALUE
Strongest	Percentage of Households Spending more than 30% Income on Housing	20.48%	24.53%
2nd Strongest	Gini Coefficient (Income Inequality)	0.44	0.46
Bottom 10 in NC, Weakest	Percentage of Population without a High School Diploma	13.37%	9.05%

Education: 54.59

This component evaluates the quality of educational institutions and the educational attainment levels of the local population, which play a crucial role in developing a skilled and adaptable workforce. Wilkes County's performance on this dimension is average when compared to other North Carolina counties, ranking 32nd in the state.

Notable variables for Wilkes County within this dimension include:

VARIABLE STRENGTH	FACTOR	WILKES COUNTY VALUE	NC COUNTY AVERAGE VALUE
Strongest	Dropout Rate	0.42%	1.65%
2nd Strongest	3rd Grade Reading Proficiency	51.8%	43.1%
Weakest	Local LEA Financial Resources (per ADM)	\$5,833	\$8,683

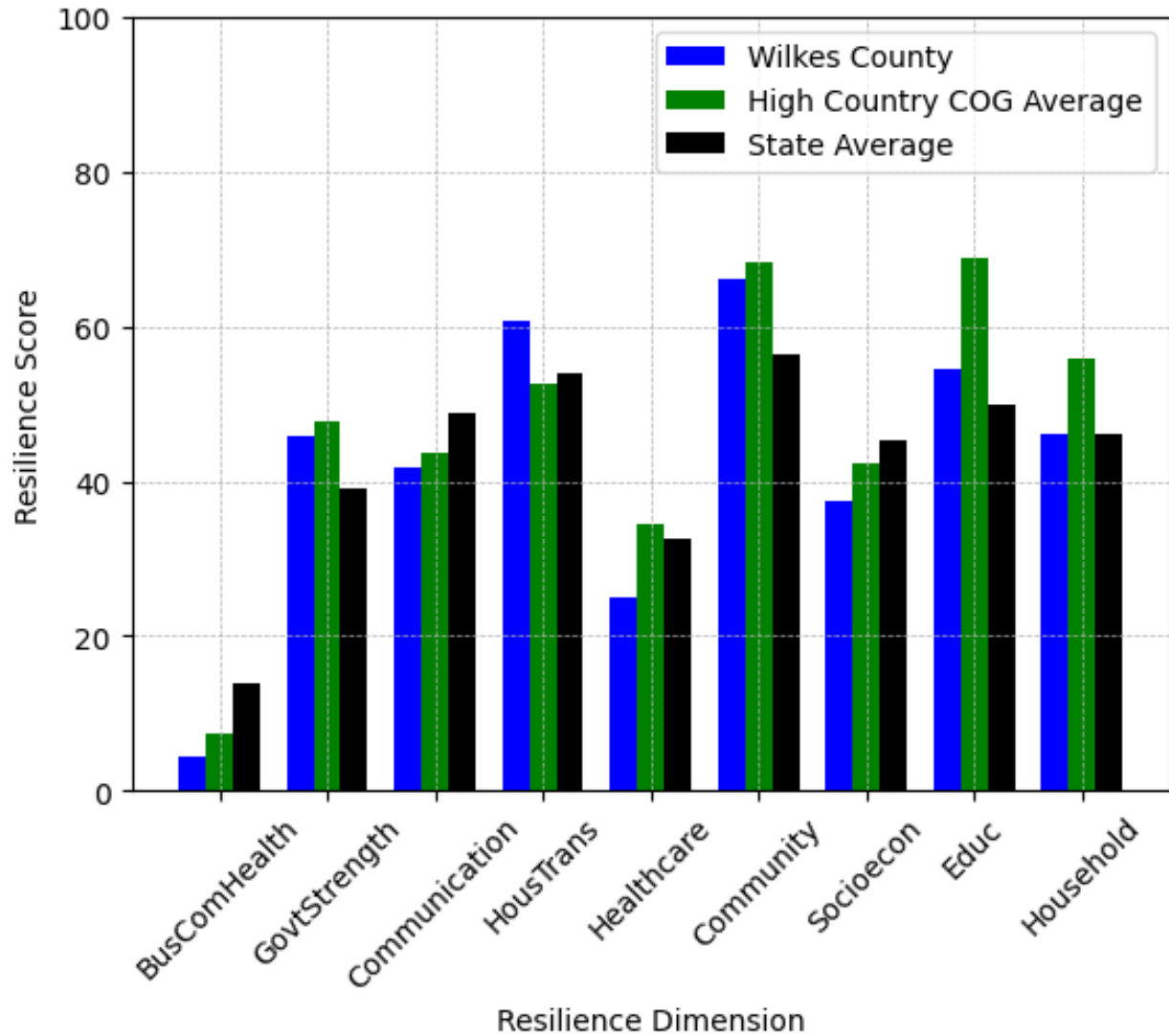
Household Characteristics: 46.11

This component examines factors such as the proportion of single-parent households, age distribution, and the proportion of individuals with disabilities, as these elements can influence a community's resilience and ability to recover from economic disruptions. Wilkes County's performance on this dimension is average when compared to other North Carolina counties, ranking 48th in the state.

Notable variables for Wilkes County within this dimension include:

VARIABLE STRENGTH	FACTOR	WILKES COUNTY VALUE	NC COUNTY AVERAGE VALUE
Strongest	Percentage of Population with Limited English Proficiency	0.537%	1.454%
2nd Strongest	Percentage of Single Parent Households	31.495%	36.132%
Weakest	Percentage of Population with a Disability	19.029%	16.566%

Wilkes County's Resilience Dimension Scores Over Time As Compared to the Region and State Averages



Note: Resilience Scores are normalized from 1 to 100 with the most resilient county scoring 100. The Resilience Score is determined based on a county's performance relative to NC's other 99 counties.

Notable Trends in Resilience Indicators, 2017-2022

NOTE: The key trends in the this section are identified based on change rates of at least .15 standard deviations over at least 5 years. Variables are positively oriented such that a positive trend indicates improved performance (e.g., 'improvement' in property crime is a lower crime rate, while 'decline' in property crime indicates a higher crime rate).

Trends in the Business Community Health dimension:

Total Employment Level: **-2,409** (5-year change rate = **-10.67%**, from 22,569 to 20,160)

↓ Change in rank from 41 to 43 in NC

Average Weekly Wages: **212 dollars** (5-year change rate = **30.42%**, from 697 to 909)

↑ Change in rank from 61 to 53 in NC

Real GDP in Current Dollars: **-5,082 dollars** (5-year change rate = **-0.21%**, from 2,464,975 to 2,459,893)

→ No change in rank

Trends in the County Government Fiscal Strength dimension:

Adjusted Tax Base: **9,305 dollars** (5-year change rate = **11.52%**, from 80,786 to 90,091)

↓ Change in rank from 54 to 65 in NC

County Sales Tax: **8,193,904 dollars** (5-year change rate = **54.74%**, from 14,967,972 to 23,161,876)

→ No change in rank

Trends in the Housing & Transportation dimension:

Ratio of Average Estimated Home Value to Median Income : **0.91** (5-year change rate = **20.43%**, from 4.46 to 5.37)

↑ Change in rank from 42 to 35 in NC

Average Available Rent Money less the Average HUD Fair Market Rent: **463.9 dollars** (5-year change rate = **116.27%**, from 399 to 862.9)

↑ Change in rank from 80 to 40 in NC

Trends in the Healthcare dimension:

Opioid Deaths per 100,000 Residents: **3** (5-year change rate = **10.27%**, from 29.2 to 32.2)

↑ Change in rank from 67 to 36 in NC

Nurses per 10,000 Residents: **-12.02** (5-year change rate = **-8.59%**, from 140 to 127.98)

↓ Change in rank from 61 to 64 in NC

Trends in the Community Cohesion dimension:

Violent Crimes per 10,000 Residents: **0.36** (4-year change rate = **17.39%**, from 2.06 to 2.42)

↑ Change in rank from 48 to 47 in NC

Property Crimes per 10,000 Residents: **-0.74** (4-year change rate = **-5.23%**, from 14.07 to 13.34)

↓ Change in rank from 27 to 40 in NC

Trends in the Socioeconomics dimension:

Unemployment Rate (Q4): **-0.3 percent** (5-year change rate = **-6.67%**, from 4 to 3.7)

↓ Change in rank from 35 to 59 in NC

Median Household Income: **21,900 dollars** (5-year change rate = **48.67%**, from 45,000 to 66,900)

↑ Change in rank from 83 to 53 in NC

Trends in the Education dimension:

Graduation Percentage: **1 percent** (5-year change rate = **1.14%**, from 88 to 89)

↑ Change in rank from 43 to 42 in NC

Dropout Rate: **-2.17 percent** (5-year change rate = **-83.82%**, from 2.59 to 0.42)

↑ Change in rank from 66 to 11 in NC

Student to Teacher Ratio: **-1** (4-year change rate = **-8.32%**, from 16 to 14)

↑ Change in rank from 78 to 51 in NC

3rd Grade Reading Proficiency: **-3.3 percent** (5-year change rate = **-5.99%**, from 55.1 to 51.8)

↑ Change in rank from 46 to 22 in NC

Data Advisements:

- Availability of Broadband Services is not available for 2022 and was excluded from calculating this county's dimension and resilience score.
- Adoption Rate of Broadband Services is not available for 2022 and was excluded from calculating this county's dimension and resilience score.