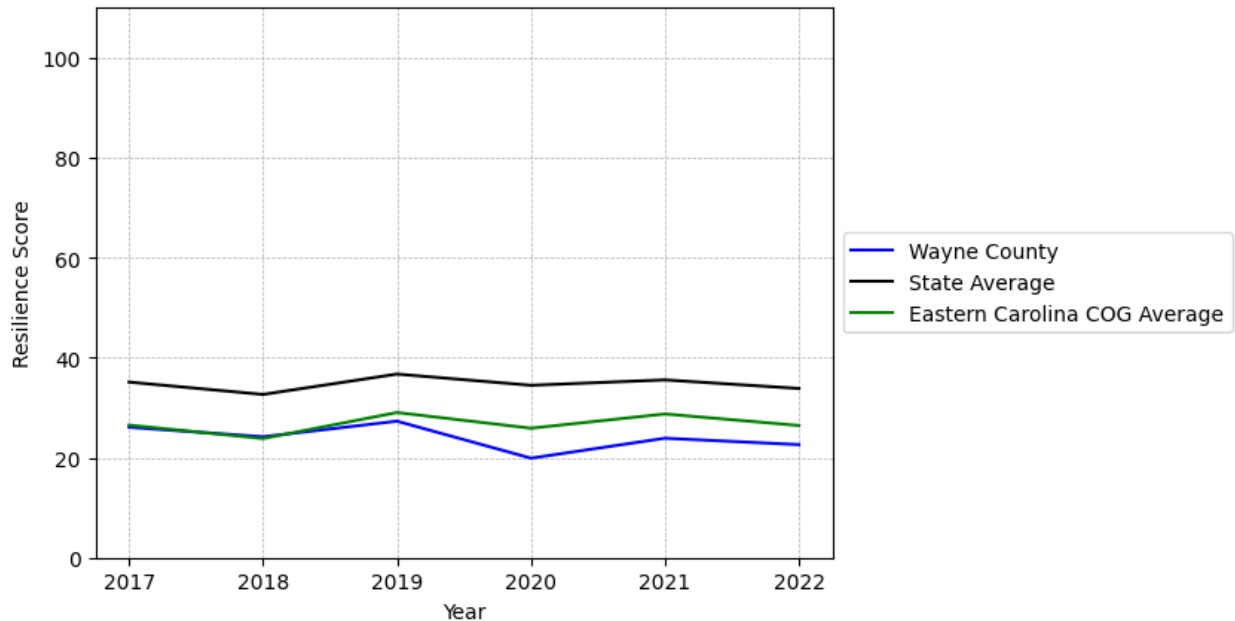


Wayne County Summary

Resilience Score: 22.61

In 2022, Wayne County achieved a Resilience Score of 22.61, which is fairly weak as compared to the North Carolina State average.

**Wayne County's Resilience Score Over Time
As Compared to the Region and State Averages**



Note: Resilience Scores are normalized from 1 to 100 with the most resilient county scoring 100. The Resilience Score is determined based on a county's performance relative to NC's other 99 counties.

Wayne County's Resilience Score is comprised of 9 distinct dimensions of resilience. Below are Wayne County's scores for 2022 on those 9 dimensions, and their rank relative to other North Carolina counties.

Business Community Health: 9.06

This component examines the strength and diversity of the local business community, including factors such as the number of businesses, employment levels, and industry diversity. Wayne County's performance on this dimension is average when compared to other North Carolina counties, ranking 65th in the state.

Notable variables for Wayne County within this dimension include:

VARIABLE STRENGTH	FACTOR	WAYNE COUNTY VALUE	NC COUNTY AVERAGE VALUE
Strongest	Total Employment Level	40,775	45,758
2nd Strongest	Real GDP in Current Dollars	\$4,950,904	\$6,092,555
Weakest	Private Sector Diversity	0.169	0.28

County Government Fiscal Strength: 56.71

This component looks at the financial health of local governments, including their ability to generate revenue, manage debt, and maintain adequate reserves to weather economic downturns. Wayne County's performance on this dimension is fairly strong when compared to other North Carolina counties, ranking 23rd in the state.

Notable variables for Wayne County within this dimension include:

VARIABLE STRENGTH	FACTOR	WAYNE COUNTY VALUE	NC COUNTY AVERAGE VALUE
Top 10 in NC, Strongest	Quick Ratio of County Government	28.56	16.4
Top 10 in NC, 2nd Strongest	Capital Assets Condition Ratio of County Government	0.64	0.51
Bottom 10 in NC, Weakest	Adjusted Tax Base	\$75,284	\$124,092

Communication: 69.26

This component assesses the availability and quality of communication infrastructure, such as broadband internet access, which is crucial for businesses and residents to stay connected and resilient during disruptions. Wayne County's performance on this dimension is fairly strong when compared to other North Carolina counties, ranking 18th in the state.

Notable variables for Wayne County within this dimension include:

VARIABLE STRENGTH	FACTOR	WAYNE COUNTY VALUE	NC COUNTY AVERAGE VALUE
Strongest	Local High-Speed Mobile Data Availability	0.9	0.66
2nd Strongest	In-Vehicle High-Speed Mobile Data Availability	0.59	0.37
Weakest	Percentage of Population without Smartphones	15.77%	17.22%

Housing & Transportation: 52.21

This component evaluates the accessibility and affordability of housing, as well as the availability of reliable transportation options, which are essential for a resilient workforce and economy. Wayne County's performance on this dimension is average when compared to other North Carolina counties, ranking 63rd in the state.

Notable variables for Wayne County within this dimension include:

VARIABLE STRENGTH	FACTOR	WAYNE COUNTY VALUE	NC COUNTY AVERAGE VALUE
Strongest	Ratio of Average Estimated Home Value to Median Income	3.24	13.67
2nd Strongest	Percentage of People with Commute Times Over 45 Minutes	10.99%	16.69%
Weakest	Percentage of Households with More Residents than Rooms	3.01%	2.1%

Healthcare: 33.31

The healthcare component examines the availability and quality of healthcare facilities, services, and professionals, which are critical for maintaining a healthy and productive workforce. Wayne County's performance on this dimension is average when compared to other North Carolina counties, ranking 27th in the state.

Notable variables for Wayne County within this dimension include:

VARIABLE STRENGTH	FACTOR	WAYNE COUNTY VALUE	NC COUNTY AVERAGE VALUE
Top 10 in NC, Strongest	Opioid Deaths per 100,000 Residents	19.5	38.73
2nd Strongest	Nurses per 10,000	340.51	262.64

	Residents		
Weakest	Nursing Home Beds per 1,000 Residents of Age 65+	23.71	27.53

Community Cohesion: 39.34

This component looks at the strength of social networks, community engagement, and the ability of residents to work together to address challenges and support one another during times of adversity. Wayne County's performance on this dimension is fairly weak when compared to other North Carolina counties, ranking 86th in the state.

Notable variables for Wayne County within this dimension include:

VARIABLE STRENGTH	FACTOR	WAYNE COUNTY VALUE	NC COUNTY AVERAGE VALUE
Strongest	Yearly Population Change Percentage	0.62%	0.906%
2nd Strongest	Nonprofits Organizations per 1,000 Residents	2.32	3.17
Weakest	Property Crimes per 10,000 Residents	24.46	15.74

Socioeconomics: 31.83

This component considers factors such as income levels, poverty rates, and inequality, which can impact a community's ability to withstand and recover from economic shocks. Wayne County's performance on this dimension is fairly weak when compared to other North Carolina counties, ranking 73rd in the state.

Notable variables for Wayne County within this dimension include:

VARIABLE STRENGTH	FACTOR	WAYNE COUNTY VALUE	NC COUNTY AVERAGE VALUE
Strongest	Percentage of Population without a High School Diploma	9.5%	9.05%
2nd Strongest	Population 25+ with at least a Bachelor's Degree	19.99%	24.4%
Weakest	Percentage of Households Spending more than 30% Income on Housing	27.86%	24.53%

Education: 25.9

This component evaluates the quality of educational institutions and the educational attainment levels of the local population, which play a crucial role in developing a skilled and adaptable workforce. Wayne County's performance on this dimension is weak when compared to other North Carolina counties, ranking 88th in the state.

Notable variables for Wayne County within this dimension include:

VARIABLE STRENGTH	FACTOR	WAYNE COUNTY VALUE	NC COUNTY AVERAGE VALUE
Strongest	Teacher Attrition Rate	0.1	0.12
2nd Strongest	Postsecondary Enrollment Percentage	21.94%	25.48%
Bottom 10 in NC, Weakest	Dropout Rate	2.88%	1.65%

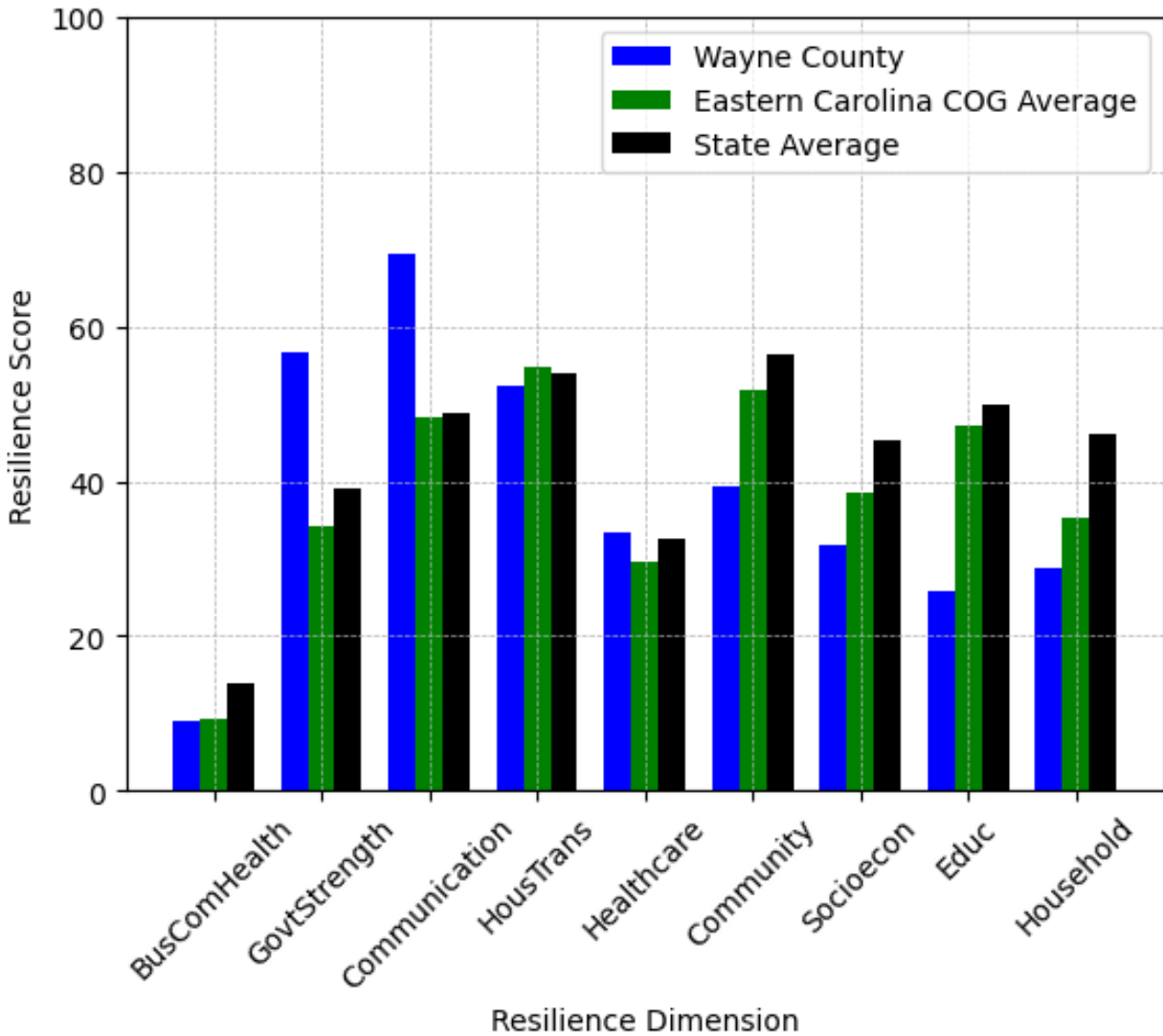
Household Characteristics: 28.75

This component examines factors such as the proportion of single-parent households, age distribution, and the proportion of individuals with disabilities, as these elements can influence a community's resilience and ability to recover from economic disruptions. Wayne County's performance on this dimension is weak when compared to other North Carolina counties, ranking 87th in the state.

Notable variables for Wayne County within this dimension include:

VARIABLE STRENGTH	FACTOR	WAYNE COUNTY VALUE	NC COUNTY AVERAGE VALUE
Strongest	Percentage of Population 65 and Older	16.6%	20.53%
2nd Strongest	Percentage of Population with a Disability	15.611%	16.566%
Bottom 10 in NC, Weakest	Percentage of Population with Limited English Proficiency	3.233%	1.454%

Wayne County's Resilience Dimension Scores Over Time As Compared to the Region and State Averages



Note: Resilience Scores are normalized from 1 to 100 with the most resilient county scoring 100. The Resilience Score is determined based on a county's performance relative to NC's other 99 counties.

Notable Trends in Resilience Indicators, 2017-2022

NOTE: The key trends in the this section are identified based on change rates of at least .15 standard deviations over at least 5 years. Variables are positively oriented such that a positive trend indicates improved performance (e.g., 'improvement' in property crime is a lower crime rate, while 'decline' in property crime indicates a higher crime rate).

Trends in the Business Community Health dimension:

Total Employment Level: **-1,563** (5-year change rate = **-3.69%**, from 42,337 to 40,775)

↓ Change in rank from 22 to 23 in NC

Average Weekly Wages: **184 dollars** (5-year change rate = **25.34%**, from 726 to 910)

↓ Change in rank from 46 to 52 in NC

Real GDP in Current Dollars: **95,332 dollars** (5-year change rate = **1.96%**, from 4,855,572 to 4,950,904)

→ No change in rank

Trends in the County Government Fiscal Strength dimension:

Adjusted Tax Base: **11,593 dollars** (5-year change rate = **18.2%**, from 63,691 to 75,284)

↑ Change in rank from 92 to 91 in NC

County Sales Tax: **9,064,150 dollars** (5-year change rate = **41.34%**, from 21,923,932 to 30,988,082)

↓ Change in rank from 26 to 28 in NC

Trends in the Housing & Transportation dimension:

Ratio of Average Estimated Home Value to Median Income : **0.79** (5-year change rate = **31.94%**, from 2.46 to 3.24)

↓ Change in rank from 17 to 18 in NC

Average Available Rent Money less the Average HUD Fair Market Rent: **161.1 dollars** (5-year change rate = **40.91%**, from 393.8 to 554.9)

↑ Change in rank from 81 to 79 in NC

Trends in the Healthcare dimension:

Opioid Deaths per 100,000 Residents: **1** (5-year change rate = **5.41%**, from 18.5 to 19.5)

↑ Change in rank from 34 to 10 in NC

Nurses per 10,000 Residents: **-42.99** (5-year change rate = **-11.21%**, from 383.5 to 340.51)

↓ Change in rank from 16 to 18 in NC

Physicians per 10,000 Residents: **0.5** (5-year change rate = **3.21%**, from 15.58 to 16.08)

↑ Change in rank from 40 to 38 in NC

Trends in the Community Cohesion dimension:

Violent Crimes per 10,000 Residents: **3.71** (4-year change rate = **299.4%**, from 1.24 to 4.95)

↓ Change in rank from 19 to 82 in NC

Property Crimes per 10,000 Residents: **12.19** (4-year change rate = **99.33%**, from 12.27 to 24.46)

↓ Change in rank from 20 to 85 in NC

Nonprofits Organizations per 1,000 Residents: **-0.68** (5-year change rate = **-22.82%**, from 3 to 2.32)

↓ Change in rank from 43 to 66 in NC

Trends in the Socioeconomics dimension:

Unemployment Rate (Q4): **-0.8 percent** (5-year change rate = **-17.86%**, from 4.7 to 3.8)

↑ Change in rank from 67 to 60 in NC

Median Household Income: **14,100 dollars** (5-year change rate = **31.33%**, from 45,000 to 59,100)

↑ Change in rank from 84 to 72 in NC

Trends in the Education dimension:

Graduation Percentage: **-1.2 percent** (5-year change rate = **-1.42%**, from 84.6 to 83.4)

↓ Change in rank from 70 to 89 in NC

Dropout Rate: **0.16 percent** (5-year change rate = **5.71%**, from 2.72 to 2.88)

↓ Change in rank from 68 to 91 in NC

Student to Teacher Ratio: **1** (4-year change rate = **5.14%**, from 15 to 15)

↓ Change in rank from 45 to 79 in NC

3rd Grade Reading Proficiency: **-11.3 percent** (5-year change rate = **-23.89%**, from 47.3 to 36)

↑ Change in rank from 80 to 76 in NC

Data Advisements:

- Availability of Broadband Services is not available for 2022 and was excluded from calculating this county's dimension and resilience score.
- Adoption Rate of Broadband Services is not available for 2022 and was excluded from calculating this county's dimension and resilience score.