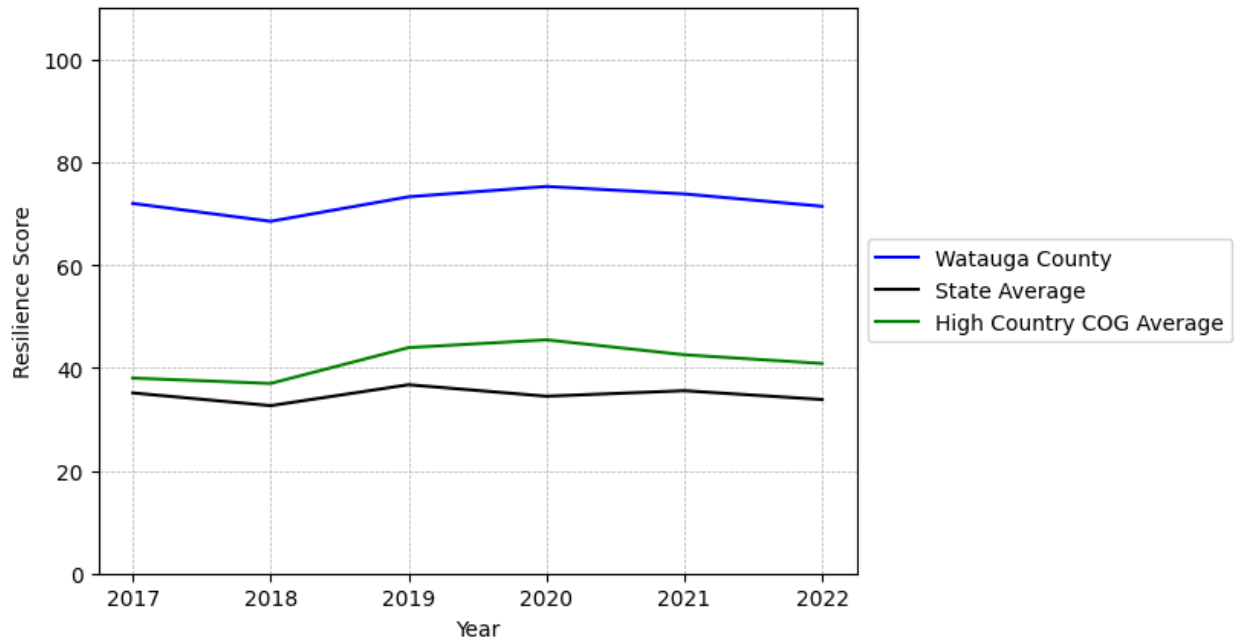


Watauga County Summary

Resilience Score: 71.42

In 2022, Watauga County achieved a Resilience Score of 71.42, which is strong as compared to the North Carolina State average.

**Watauga County's Resilience Score Over Time
As Compared to the Region and State Averages**



Note: Resilience Scores are normalized from 1 to 100 with the most resilient county scoring 100. The Resilience Score is determined based on a county's performance relative to NC's other 99 counties.

Watauga County's Resilience Score is comprised of 9 distinct dimensions of resilience. Below are Watauga County's scores for 2022 on those 9 dimensions, and their rank relative to other North Carolina counties.

Business Community Health: 16.33

This component examines the strength and diversity of the local business community, including factors such as the number of businesses, employment levels, and industry diversity. Watauga County's performance on this dimension is average when compared to other North Carolina counties, ranking 24th in the state.

Notable variables for Watauga County within this dimension include:

VARIABLE STRENGTH	FACTOR	WATAUGA COUNTY VALUE	NC COUNTY AVERAGE VALUE
Strongest	Science, Engineering, & Technology Industries Employment Percentage	2.96%	1.79%
2nd Strongest	Percentage of Companies in Science, Engineering, & Technology Industries	8.14%	6.13%
Weakest	Private Sector Diversity	0.192	0.28

County Government Fiscal Strength: 72.2

This component looks at the financial health of local governments, including their ability to generate revenue, manage debt, and maintain adequate reserves to weather economic downturns. Watauga County's performance on this dimension is strong when compared to other North Carolina counties, ranking 10th in the state.

Notable variables for Watauga County within this dimension include:

VARIABLE STRENGTH	FACTOR	WATAUGA COUNTY VALUE	NC COUNTY AVERAGE VALUE
Top 10 in NC, Strongest	Capital Assets Condition Ratio of County Government	0.7	0.51
Top 10 in NC, 2nd Strongest	Operations Ratio of County Government	1.29	1.11
Top 10 in NC	Adjusted Tax Base	\$181,496	\$124,092
Weakest	Debt Service Ratio of County Government	0.11	0.07

Communication: 55.89

This component assesses the availability and quality of communication infrastructure, such as broadband internet access, which is crucial for businesses and residents to stay connected and

resilient during disruptions. Watauga County's performance on this dimension is average when compared to other North Carolina counties, ranking 38th in the state.

Notable variables for Watauga County within this dimension include:

VARIABLE STRENGTH	FACTOR	WATAUGA COUNTY VALUE	NC COUNTY AVERAGE VALUE
Strongest	Broadband Availability	0.8	0.6
2nd Strongest	Percentage of Population without Smartphones	12.13%	17.22%
Weakest	In-Vehicle High-Speed Mobile Data Availability	0.19	0.37

Housing & Transportation: 83.26

This component evaluates the accessibility and affordability of housing, as well as the availability of reliable transportation options, which are essential for a resilient workforce and economy. Watauga County's performance on this dimension is strong when compared to other North Carolina counties, ranking 11th in the state.

Notable variables for Watauga County within this dimension include:

VARIABLE STRENGTH	FACTOR	WATAUGA COUNTY VALUE	NC COUNTY AVERAGE VALUE
Top 10 in NC, Strongest	Percentage of People with Commute Times Over 45 Minutes	6.57%	16.69%
Top 10 in NC, 2nd Strongest	Percentage of People Driving Alone to Work	82.76%	86.36%
Bottom 10 in NC, Weakest	Percentage of Owner-Occupied Homes	39.42%	57.87%

Healthcare: 40.86

The healthcare component examines the availability and quality of healthcare facilities, services, and professionals, which are critical for maintaining a healthy and productive workforce. Watauga County's performance on this dimension is fairly strong when compared to other North Carolina counties, ranking 13th in the state.

Notable variables for Watauga County within this dimension include:

VARIABLE STRENGTH	FACTOR	WATAUGA COUNTY VALUE	NC COUNTY AVERAGE VALUE
-------------------	--------	----------------------	-------------------------

Top 10 in NC, Strongest	Mental Health Professionals per 10,000 Residents	14.06	6.6
Top 10 in NC, 2nd Strongest	Physicians per 10,000 Residents	26.63	16.05
Weakest	Nursing Home Beds per 1,000 Residents of Age 65+	22.71	27.53

Community Cohesion: 47.48

This component looks at the strength of social networks, community engagement, and the ability of residents to work together to address challenges and support one another during times of adversity. Watauga County's performance on this dimension is fairly weak when compared to other North Carolina counties, ranking 77th in the state.

Notable variables for Watauga County within this dimension include:

VARIABLE STRENGTH	FACTOR	WATAUGA COUNTY VALUE	NC COUNTY AVERAGE VALUE
Top 10 in NC, Strongest	Violent Crimes per 10,000 Residents	0.79	3.07
2nd Strongest	Property Crimes per 10,000 Residents	10.32	15.74
Bottom 10 in NC, Weakest	Percentage of Inactive Voters	14.7%	11.3%

Socioeconomics: 49.38

This component considers factors such as income levels, poverty rates, and inequality, which can impact a community's ability to withstand and recover from economic shocks. Watauga County's performance on this dimension is average when compared to other North Carolina counties, ranking 42nd in the state.

Notable variables for Watauga County within this dimension include:

VARIABLE STRENGTH	FACTOR	WATAUGA COUNTY VALUE	NC COUNTY AVERAGE VALUE
Top 10 in NC, Strongest	Percentage of Population without a High School Diploma	4.3%	9.05%
Top 10 in NC, 2nd Strongest	Population 25+ with at least a Bachelor's Degree	44.52%	24.4%
Top 10 in NC	Unemployment Rate (Q4)	3.1%	3.9%

Bottom 10 in NC	Gini Coefficient (Income Inequality)	0.51	0.46
Bottom 10 in NC, Weakest	Percentage of Households Spending more than 30% Income on Housing	33.63%	24.53%

Education: 100

This component evaluates the quality of educational institutions and the educational attainment levels of the local population, which play a crucial role in developing a skilled and adaptable workforce. Watauga County's performance on this dimension is strong when compared to other North Carolina counties, ranking 1st in the state.

Notable variables for Watauga County within this dimension include:

VARIABLE STRENGTH	FACTOR	WATAUGA COUNTY VALUE	NC COUNTY AVERAGE VALUE
Top 10 in NC, Strongest	Postsecondary Enrollment Percentage	85.35%	25.48%
Top 10 in NC, 2nd Strongest	Teacher Attrition Rate	0.06	0.12
Top 10 in NC	Local LEA Financial Resources (per ADM)	\$18,42	\$8,683
Top 10 in NC	3rd Grade Reading Proficiency	57.5%	43.1%
Top 10 in NC	Graduation Percentage	94%	88.03%
Top 10 in NC, Weakest	Dropout Rate	1.42%	1.65%

Household Characteristics: 100

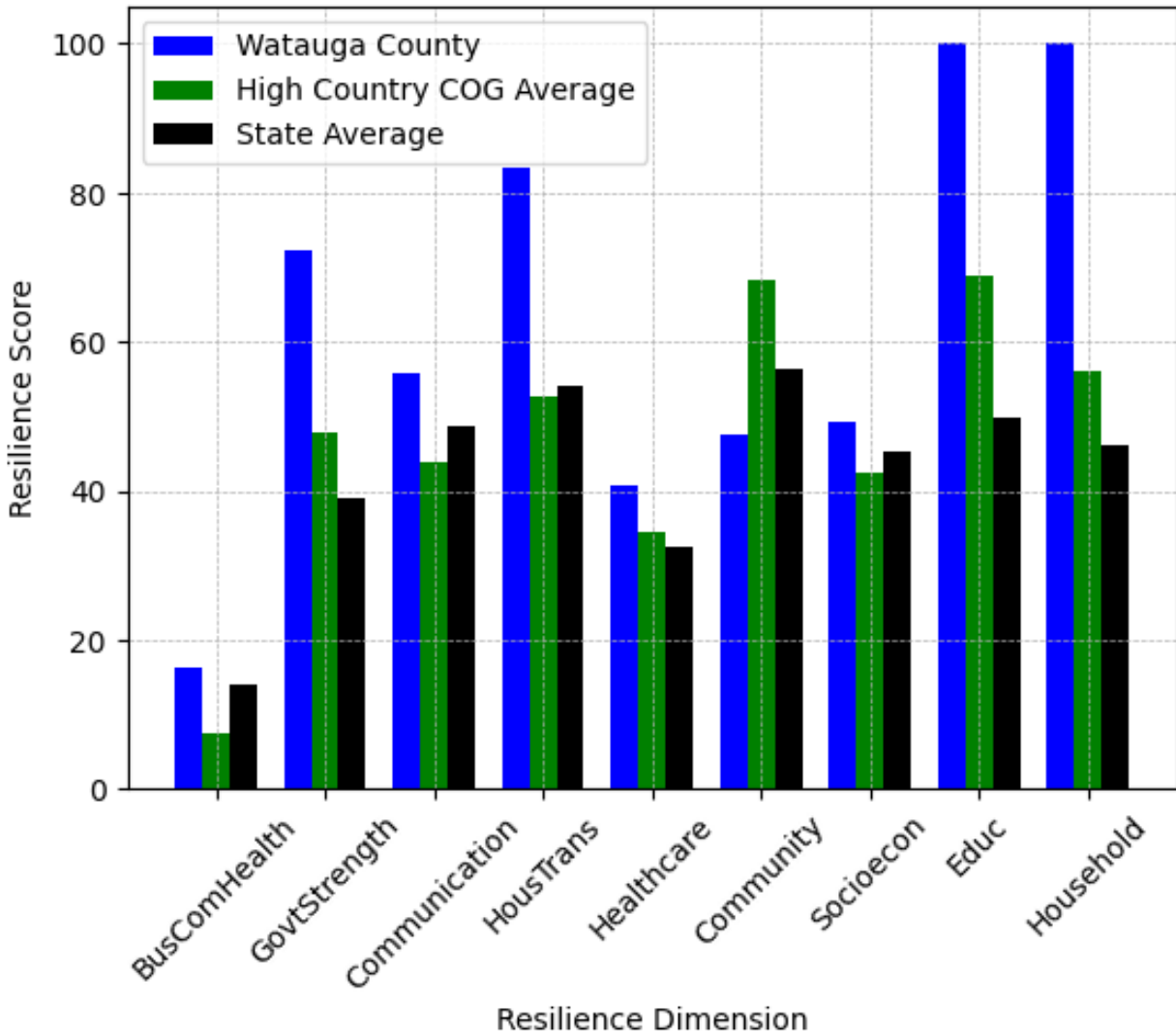
This component examines factors such as the proportion of single-parent households, age distribution, and the proportion of individuals with disabilities, as these elements can influence a community's resilience and ability to recover from economic disruptions. Watauga County's performance on this dimension is strong when compared to other North Carolina counties, ranking 1st in the state.

Notable variables for Watauga County within this dimension include:

VARIABLE STRENGTH	FACTOR	WATAUGA COUNTY VALUE	NC COUNTY AVERAGE VALUE
Top 10 in NC, Strongest	Percentage of Population 17 and Younger	12.1%	20.37%
Top 10 in NC, 2nd Strongest	Percentage of Single Parent Households	20.838%	36.132%

Top 10 in NC	Percentage of Population with a Disability	11.14%	16.566%
Weakest	Percentage of Population with Limited English Proficiency	0.647%	1.454%

Watauga County's Resilience Dimension Scores Over Time As Compared to the Region and State Averages



Note: Resilience Scores are normalized from 1 to 100 with the most resilient county scoring 100. The Resilience Score is determined based on a county's performance relative to NC's other 99 counties.

Notable Trends in Resilience Indicators, 2017-2022

NOTE: The key trends in the this section are identified based on change rates of at least .15 standard deviations over at least 5 years. Variables are positively oriented such that a positive trend indicates improved performance (e.g., 'improvement' in property crime is a lower crime rate, while 'decline' in property crime indicates a higher crime rate).

Trends in the Business Community Health dimension:

Total Employment Level: **1,328** (5-year change rate = **5.6%**, from 23,708 to 25,036)

→ No change in rank

Average Weekly Wages: **184 dollars** (5-year change rate = **25.92%**, from 710 to 894)

↓ Change in rank from 56 to 61 in NC

Real GDP in Current Dollars: **233,717 dollars** (5-year change rate = **10.94%**, from 2,135,560 to 2,369,277)

↑ Change in rank from 44 to 43 in NC

Trends in the County Government Fiscal Strength dimension:

Adjusted Tax Base: **15,955 dollars** (5-year change rate = **9.64%**, from 165,541 to 181,496)

→ No change in rank

County Sales Tax: **7,757,934 dollars** (5-year change rate = **61.6%**, from 12,595,032 to 20,352,966)

↑ Change in rank from 43 to 42 in NC

Trends in the Housing & Transportation dimension:

Ratio of Average Estimated Home Value to Median Income : **1.51** (5-year change rate = **12.79%**, from 11.84 to 13.35)

↑ Change in rank from 77 to 71 in NC

Average Available Rent Money less the Average HUD Fair Market Rent: **438.3 dollars** (5-year change rate = **69.72%**, from 628.7 to 1,067)

↑ Change in rank from 24 to 13 in NC

Trends in the Healthcare dimension:

Opioid Deaths per 100,000 Residents: **16** (5-year change rate = **296.3%**, from 5.4 to 21.4)

↓ Change in rank from 3 to 13 in NC

Nurses per 10,000 Residents: **18.46** (5-year change rate = **13.79%**, from 133.88 to 152.34)

↑ Change in rank from 62 to 53 in NC

Physicians per 10,000 Residents: **3.57** (5-year change rate = **15.48%**, from 23.06 to 26.63)

↑ Change in rank from 16 to 10 in NC

Trends in the Community Cohesion dimension:

Violent Crimes per 10,000 Residents: **0.15** (4-year change rate = **22.93%**, from 0.64 to 0.79)

↑ Change in rank from 10 to 9 in NC

Property Crimes per 10,000 Residents: **-1.18** (4-year change rate = **-10.27%**, from 11.5 to 10.32)

↓ Change in rank from 16 to 18 in NC

Nonprofits Organizations per 1,000 Residents: **-2.7** (5-year change rate = **-67.53%**, from 3.99 to 1.3)

↓ Change in rank from 24 to 89 in NC

Trends in the Socioeconomics dimension:

Unemployment Rate (Q4): **-0.5 percent** (5-year change rate = **-13.21%**, from 3.5 to 3.1)

↓ Change in rank from 4 to 7 in NC

Median Household Income: **20,300 dollars** (5-year change rate = **32.79%**, from 61,900 to 82,200)

↓ Change in rank from 18 to 19 in NC

Trends in the Education dimension:

Graduation Percentage: **1.6 percent** (5-year change rate = **1.73%**, from 92.4 to 94)

↑ Change in rank from 11 to 6 in NC

Dropout Rate: **0.2 percent** (5-year change rate = **16.5%**, from 1.22 to 1.42)

↓ Change in rank from 11 to 40 in NC

Student to Teacher Ratio: **-1** (4-year change rate = **-7.32%**, from 14 to 13)

↑ Change in rank from 21 to 15 in NC

3rd Grade Reading Proficiency: **-13.4 percent** (5-year change rate = **-18.9%**, from 70.9 to 57.5)

↓ Change in rank from 3 to 5 in NC

Data Advisements:

- Availability of Broadband Services is not available for 2022 and was excluded from calculating this county's dimension and resilience score.
- Adoption Rate of Broadband Services is not available for 2022 and was excluded from calculating this county's dimension and resilience score.