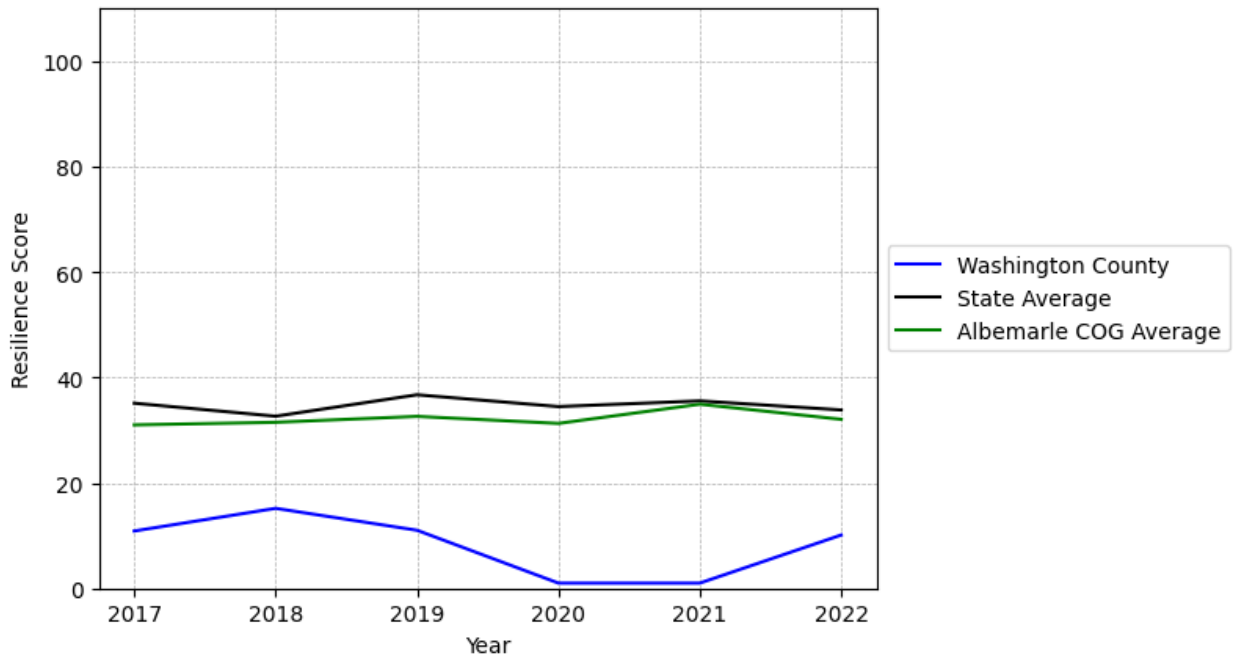


Washington County Summary

Resilience Score: 10.12

In 2022, Washington County achieved a Resilience Score of 10.12, which is weak as compared to the North Carolina State average.

**Washington County's Resilience Score Over Time
As Compared to the Region and State Averages**



Note: Resilience Scores are normalized from 1 to 100 with the most resilient county scoring 100. The Resilience Score is determined based on a county's performance relative to NC's other 99 counties.

Washington County's Resilience Score is comprised of 9 distinct dimensions of resilience. Below are Washington County's scores for 2022 on those 9 dimensions, and their rank relative to other North Carolina counties.

Business Community Health: 22.85

This component examines the strength and diversity of the local business community, including factors such as the number of businesses, employment levels, and industry diversity. Washington County's performance on this dimension is fairly strong when compared to other North Carolina counties, ranking 11th in the state.

Notable variables for Washington County within this dimension include:

VARIABLE STRENGTH	FACTOR	WASHINGTON COUNTY VALUE	NC COUNTY AVERAGE VALUE
Top 10 in NC, Strongest	Ratio of Available Child Care Slots to Number of Children under Five	1.05	0.59
Top 10 in NC, 2nd Strongest	Private Sector Diversity	0.545	0.28
Bottom 10 in NC, Weakest	Real GDP in Current Dollars	\$276,803	\$6,092,555

County Government Fiscal Strength: 56.46

This component looks at the financial health of local governments, including their ability to generate revenue, manage debt, and maintain adequate reserves to weather economic downturns. Washington County's performance on this dimension is fairly strong when compared to other North Carolina counties, ranking 24th in the state.

Notable variables for Washington County within this dimension include:

VARIABLE STRENGTH	FACTOR	WASHINGTON COUNTY VALUE	NC COUNTY AVERAGE VALUE
Top 10 in NC, Strongest	Debt Service Ratio of County Government	0	0.07
Top 10 in NC, 2nd Strongest	Capital Assets Condition Ratio of County Government	0.66	0.51
Top 10 in NC	Solvency Ratio of County Government	74.31	46.7
Bottom 10 in NC, Weakest	County Sales Tax	\$2,859,43	\$31,151,902

Communication: 13.01

This component assesses the availability and quality of communication infrastructure, such as broadband internet access, which is crucial for businesses and residents to stay connected and

resilient during disruptions. Washington County's performance on this dimension is weak when compared to other North Carolina counties, ranking 98th in the state.

Notable variables for Washington County within this dimension include:

VARIABLE STRENGTH	FACTOR	WASHINGTON COUNTY VALUE	NC COUNTY AVERAGE VALUE
Strongest	Broadband Availability	0.45	0.6
2nd Strongest	Local High-Speed Mobile Data Availability	0.44	0.66
Bottom 10 in NC, Weakest	Percentage of Population without Smartphones	34.8%	17.22%

Housing & Transportation: 26.78

This component evaluates the accessibility and affordability of housing, as well as the availability of reliable transportation options, which are essential for a resilient workforce and economy.

Washington County's performance on this dimension is weak when compared to other North Carolina counties, ranking 96th in the state.

Notable variables for Washington County within this dimension include:

VARIABLE STRENGTH	FACTOR	WASHINGTON COUNTY VALUE	NC COUNTY AVERAGE VALUE
Top 10 in NC, Strongest	Percentage of Households with More Residents than Rooms	0.14%	2.1%
Top 10 in NC, 2nd Strongest	Percentage of People Driving Alone to Work	81.94%	86.36%
Bottom 10 in NC	Percentage of Homes Built Before 1980	60.93%	40.9%
Bottom 10 in NC, Weakest	Percentage of Population without Vehicles	18.19%	5.75%

Healthcare: 32.61

The healthcare component examines the availability and quality of healthcare facilities, services, and professionals, which are critical for maintaining a healthy and productive workforce.

Washington County's performance on this dimension is average when compared to other North Carolina counties, ranking 29th in the state.

Notable variables for Washington County within this dimension include:

VARIABLE STRENGTH	FACTOR	WASHINGTON COUNTY VALUE	NC COUNTY AVERAGE VALUE
Top 10 in NC, Strongest	Opioid Deaths per 100,000 Residents	8.6	38.73
Top 10 in NC, 2nd Strongest	Nursing Home Beds per 1,000 Residents of Age 65+	38.67	27.53
Bottom 10 in NC, Weakest	Mental Health Professionals per 10,000 Residents	1.88	6.6

Community Cohesion: 39.47

This component looks at the strength of social networks, community engagement, and the ability of residents to work together to address challenges and support one another during times of adversity. Washington County's performance on this dimension is fairly weak when compared to other North Carolina counties, ranking 84th in the state.

Notable variables for Washington County within this dimension include:

VARIABLE STRENGTH	FACTOR	WASHINGTON COUNTY VALUE	NC COUNTY AVERAGE VALUE
Strongest	Property Crimes per 10,000 Residents	14.63	15.74
2nd Strongest	Percentage of Inactive Voters	10.93%	11.3%
Bottom 10 in NC, Weakest	Yearly Population Change Percentage	-1.055%	0.906%

Socioeconomics: 15.11

This component considers factors such as income levels, poverty rates, and inequality, which can impact a community's ability to withstand and recover from economic shocks. Washington County's performance on this dimension is weak when compared to other North Carolina counties, ranking 93rd in the state.

Notable variables for Washington County within this dimension include:

VARIABLE STRENGTH	FACTOR	WASHINGTON COUNTY VALUE	NC COUNTY AVERAGE VALUE
Strongest	Percentage of Population without Health Insurance	8.7%	11.23%
2nd Strongest	Percentage of Population without a High School	10.22%	9.05%

	Diploma		
Bottom 10 in NC	Percentage of Households Spending more than 30% Income on Housing	30.51%	24.53%
Bottom 10 in NC	Unemployment Rate (Q4)	5.1%	3.9%
Bottom 10 in NC	Gini Coefficient (Income Inequality)	0.51	0.46
Bottom 10 in NC	Percentage of Households with Income over \$200k	1.96%	5.28%
Bottom 10 in NC, Weakest	Population 25+ with at least a Bachelor's Degree	14.1%	24.4%

Education: 25.68

This component evaluates the quality of educational institutions and the educational attainment levels of the local population, which play a crucial role in developing a skilled and adaptable workforce. Washington County's performance on this dimension is weak when compared to other North Carolina counties, ranking 89th in the state.

Notable variables for Washington County within this dimension include:

VARIABLE STRENGTH	FACTOR	WASHINGTON COUNTY VALUE	NC COUNTY AVERAGE VALUE
Top 10 in NC, Strongest	Dropout Rate	0.39%	1.65%
2nd Strongest	Student to Teacher Ratio	13	14
Bottom 10 in NC	Teacher Attrition Rate	0.17	0.12
Bottom 10 in NC	Postsecondary Enrollment Percentage	11.5%	25.48%
Bottom 10 in NC, Weakest	3rd Grade Reading Proficiency	15.3%	43.1%

Household Characteristics: 17.24

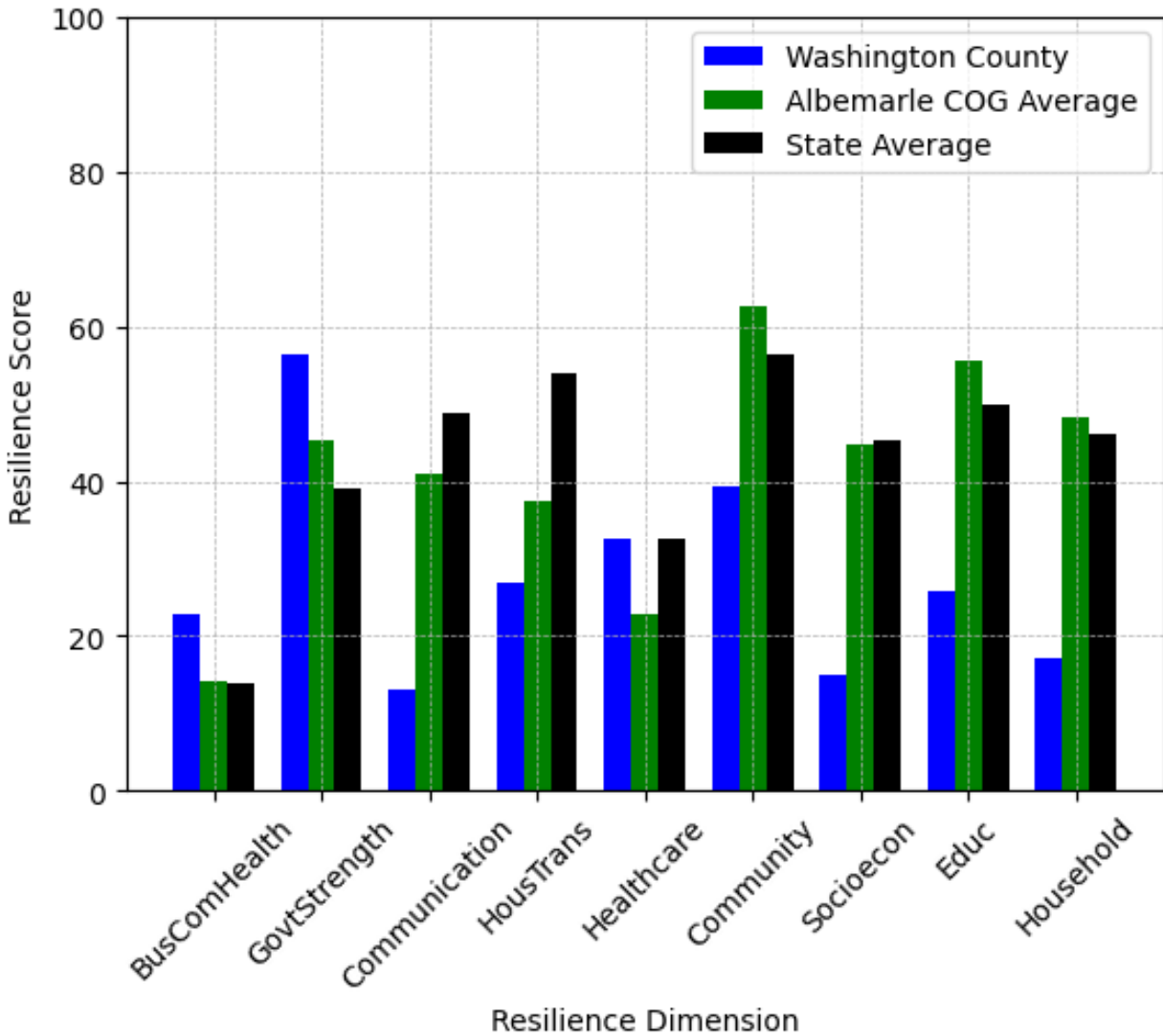
This component examines factors such as the proportion of single-parent households, age distribution, and the proportion of individuals with disabilities, as these elements can influence a community's resilience and ability to recover from economic disruptions. Washington County's performance on this dimension is weak when compared to other North Carolina counties, ranking 95th in the state.

Notable variables for Washington County within this dimension include:

VARIABLE STRENGTH	FACTOR	WASHINGTON COUNTY VALUE	NC COUNTY AVERAGE VALUE
Top 10 in NC, Strongest	Percentage of Population	0.036%	1.454%

	with Limited English Proficiency		
2nd Strongest	Percentage of Population 17 and Younger	20.16%	20.37%
Bottom 10 in NC	Percentage of Single Parent Households	54.555%	36.132%
Bottom 10 in NC, Weakest	Percentage of Population with a Disability	23.643%	16.566%

Washington County's Resilience Dimension Scores Over Time As Compared to the Region and State Averages



Note: Resilience Scores are normalized from 1 to 100 with the most resilient county scoring 100. The Resilience Score is determined based on a county's performance relative to NC's other 99 counties.

Notable Trends in Resilience Indicators, 2017-2022

NOTE: The key trends in the this section are identified based on change rates of at least .15 standard deviations over at least 5 years. Variables are positively oriented such that a positive trend indicates improved performance (e.g., 'improvement' in property crime is a lower crime rate, while 'decline' in property crime indicates a higher crime rate).

Trends in the Business Community Health dimension:

Total Employment Level: **-223** (5-year change rate = **-6.61%**, from 3,373 to 3,150)

↓ Change in rank from 89 to 90 in NC

Average Weekly Wages: **174 dollars** (5-year change rate = **23.17%**, from 751 to 925)

↓ Change in rank from 35 to 47 in NC

Real GDP in Current Dollars: **19,998 dollars** (5-year change rate = **7.79%**, from 256,805 to 276,803)

→ No change in rank

Trends in the County Government Fiscal Strength dimension:

Adjusted Tax Base: **19,478 dollars** (5-year change rate = **27.99%**, from 69,593 to 89,071)

↑ Change in rank from 80 to 69 in NC

County Sales Tax: **614,289 dollars** (5-year change rate = **27.36%**, from 2,245,140 to 2,859,430)

↓ Change in rank from 90 to 94 in NC

Trends in the Housing & Transportation dimension:

Ratio of Average Estimated Home Value to Median Income : **3.51** (5-year change rate = **21.29%**, from 16.47 to 19.97)

↑ Change in rank from 81 to 80 in NC

Average Available Rent Money less the Average HUD Fair Market Rent: **278.7 dollars** (5-year change rate = **108.49%**, from 256.9 to 535.6)

↑ Change in rank from 99 to 83 in NC

Trends in the Healthcare dimension:

Opioid Deaths per 100,000 Residents: **0.3** (5-year change rate = **3.61%**, from 8.3 to 8.6)

↑ Change in rank from 7 to 2 in NC

Nurses per 10,000 Residents: **23.41** (5-year change rate = **28.79%**, from 81.3 to 104.71)

↑ Change in rank from 83 to 70 in NC

Physicians per 10,000 Residents: **4.05** (5-year change rate = **116.05%**, from 3.49 to 7.54)

↑ Change in rank from 90 to 77 in NC

Mental Health Professionals per 10,000 Residents: **-0.73** (5-year change rate = **-27.97%**, from 2.61 to 1.88)

↓ Change in rank from 90 to 96 in NC

Trends in the Community Cohesion dimension:

Violent Crimes per 10,000 Residents: **2.24** (4-year change rate = **78.69%**, from 2.85 to 5.1)

↓ Change in rank from 68 to 84 in NC

Property Crimes per 10,000 Residents: **1.17** (4-year change rate = **8.69%**, from 13.46 to 14.63)

↓ Change in rank from 25 to 50 in NC

Nonprofits Organizations per 1,000 Residents: **0.22** (5-year change rate = **16.1%**, from 1.37 to 1.6)

↑ Change in rank from 89 to 85 in NC

Trends in the Socioeconomics dimension:

Unemployment Rate (Q4): **-1.5 percent** (5-year change rate = **-22.22%**, from 6.6 to 5.1)

↑ Change in rank from 95 to 92 in NC

Median Household Income: **12,100 dollars** (5-year change rate = **28.74%**, from 42,100 to 54,200)

↑ Change in rank from 93 to 90 in NC

Trends in the Education dimension:

Graduation Percentage: **2.7 percent** (5-year change rate = **3.33%**, from 81.2 to 83.9)

↑ Change in rank from 91 to 86 in NC

Dropout Rate: **-2.6 percent** (5-year change rate = **-86.83%**, from 3 to 0.39)

↑ Change in rank from 80 to 10 in NC

3rd Grade Reading Proficiency: **-20.2 percent** (5-year change rate = **-56.9%**, from 35.5 to 15.3)

↓ Change in rank from 97 to 100 in NC

Data Advisements:

- This county has a population under 20,000 residents according to the US Census Bureau; in low population areas, some variable estimates can be less stable and more sensitive to changes.
- Availability of Broadband Services is not available for 2022 and was excluded from calculating this county's dimension and resilience score.
- Adoption Rate of Broadband Services is not available for 2022 and was excluded from calculating this county's dimension and resilience score.