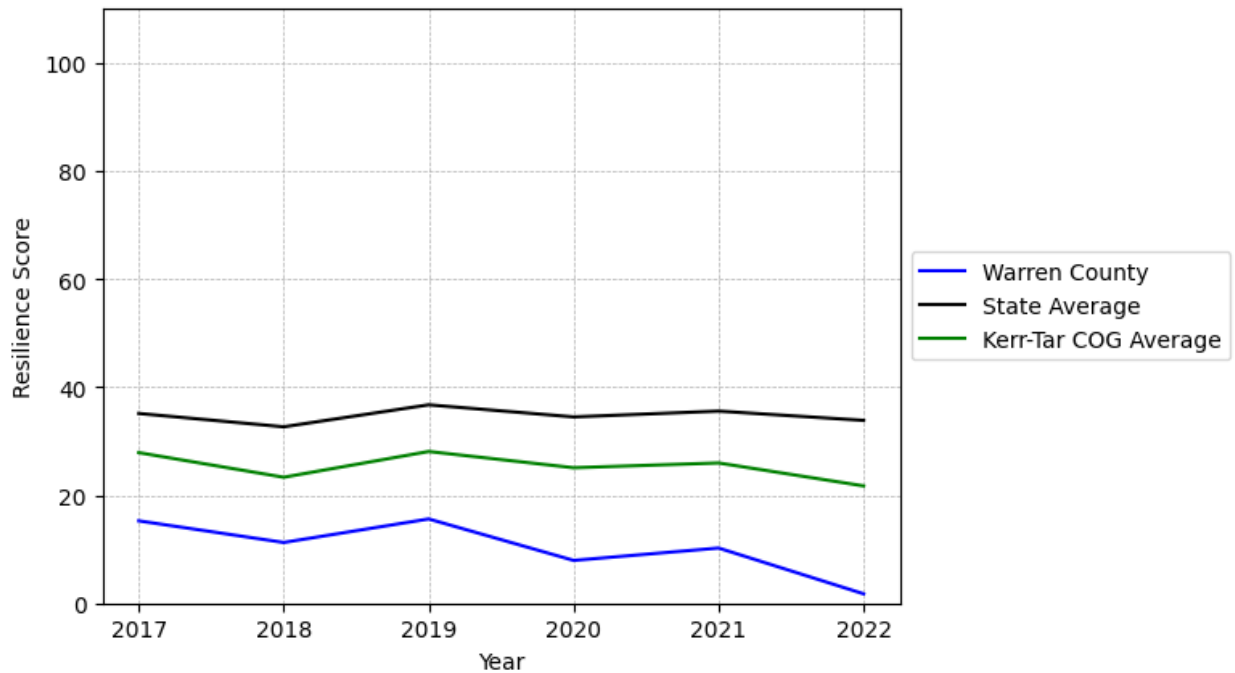


Warren County Summary

Resilience Score: 1.75

In 2022, Warren County achieved a Resilience Score of 1.75, which is weak as compared to the North Carolina State average.

**Warren County's Resilience Score Over Time
As Compared to the Region and State Averages**



Note: Resilience Scores are normalized from 1 to 100 with the most resilient county scoring 100. The Resilience Score is determined based on a county's performance relative to NC's other 99 counties.

Warren County's Resilience Score is comprised of 9 distinct dimensions of resilience. Below are Warren County's scores for 2022 on those 9 dimensions, and their rank relative to other North Carolina counties.

Business Community Health: 7.41

This component examines the strength and diversity of the local business community, including factors such as the number of businesses, employment levels, and industry diversity. Warren County's performance on this dimension is average when compared to other North Carolina counties, ranking 76th in the state.

Notable variables for Warren County within this dimension include:

VARIABLE STRENGTH	FACTOR	WARREN COUNTY VALUE	NC COUNTY AVERAGE VALUE
Strongest	Private Sector Diversity	0.461	0.28
2nd Strongest	Ratio of Available Child Care Slots to Number of Children under Five	0.57	0.59
Bottom 10 in NC	Total Employment Level	2,907	45,758
Bottom 10 in NC	Average Weekly Wages	\$76	\$951
Weakest	Science, Engineering, & Technology Industries Employment Percentage	N/A	1.79%

County Government Fiscal Strength: 50.63

This component looks at the financial health of local governments, including their ability to generate revenue, manage debt, and maintain adequate reserves to weather economic downturns. Warren County's performance on this dimension is average when compared to other North Carolina counties, ranking 34th in the state.

Notable variables for Warren County within this dimension include:

VARIABLE STRENGTH	FACTOR	WARREN COUNTY VALUE	NC COUNTY AVERAGE VALUE
Strongest	Debt Service Ratio of County Government	0.04	0.07
2nd Strongest	Solvency Ratio of County Government	60.87	46.7
Weakest	County Sales Tax	\$4,199,85	\$31,151,902

Communication: 25.35

This component assesses the availability and quality of communication infrastructure, such as broadband internet access, which is crucial for businesses and residents to stay connected and resilient during disruptions. Warren County's performance on this dimension is weak when compared to other North Carolina counties, ranking 93rd in the state.

Notable variables for Warren County within this dimension include:

VARIABLE STRENGTH	FACTOR	WARREN COUNTY VALUE	NC COUNTY AVERAGE VALUE
Strongest	In-Vehicle High-Speed Mobile Data Availability	0.34	0.37
2nd Strongest	Local High-Speed Mobile Data Availability	0.56	0.66
Bottom 10 in NC	Percentage of Population without Smartphones	26.05%	17.22%
Bottom 10 in NC, Weakest	Broadband Availability	0.26	0.6

Housing & Transportation: 36.21

This component evaluates the accessibility and affordability of housing, as well as the availability of reliable transportation options, which are essential for a resilient workforce and economy. Warren County's performance on this dimension is weak when compared to other North Carolina counties, ranking 88th in the state.

Notable variables for Warren County within this dimension include:

VARIABLE STRENGTH	FACTOR	WARREN COUNTY VALUE	NC COUNTY AVERAGE VALUE
Strongest	Percentage of Homes Built Before 1980	38.03%	40.9%
2nd Strongest	Percentage of People Driving Alone to Work	86.52%	86.36%
Bottom 10 in NC	Percentage of Owner-Occupied Homes	47.33%	57.87%
Bottom 10 in NC, Weakest	Percentage of Population without Vehicles	10.36%	5.75%

Healthcare: 19.09

The healthcare component examines the availability and quality of healthcare facilities, services, and professionals, which are critical for maintaining a healthy and productive workforce. Warren County's performance on this dimension is fairly weak when compared to other North Carolina counties, ranking 73rd in the state.

Notable variables for Warren County within this dimension include:

VARIABLE STRENGTH	FACTOR	WARREN COUNTY VALUE	NC COUNTY AVERAGE VALUE
-------------------	--------	---------------------	-------------------------

Strongest	Nursing Home Beds per 1,000 Residents of Age 65+	30.09	27.53
2nd Strongest	Opioid Deaths per 100,000 Residents	30.4	38.73
Bottom 10 in NC	Mental Health Professionals per 10,000 Residents	1.59	6.6
Bottom 10 in NC, Weakest	Nurses per 10,000 Residents	38.49	262.64

Community Cohesion: 48.83

This component looks at the strength of social networks, community engagement, and the ability of residents to work together to address challenges and support one another during times of adversity. Warren County's performance on this dimension is average when compared to other North Carolina counties, ranking 74th in the state.

Notable variables for Warren County within this dimension include:

VARIABLE STRENGTH	FACTOR	WARREN COUNTY VALUE	NC COUNTY AVERAGE VALUE
Strongest	Percentage of Inactive Voters	9.3%	11.3%
2nd Strongest	Yearly Population Change Percentage	0.317%	0.906%
Weakest	Nonprofits Organizations per 1,000 Residents	1.95	3.17

Socioeconomics: 10.92

This component considers factors such as income levels, poverty rates, and inequality, which can impact a community's ability to withstand and recover from economic shocks. Warren County's performance on this dimension is weak when compared to other North Carolina counties, ranking 95th in the state.

Notable variables for Warren County within this dimension include:

VARIABLE STRENGTH	FACTOR	WARREN COUNTY VALUE	NC COUNTY AVERAGE VALUE
Strongest	Percentage of Households with Income over \$200k	5.43%	5.28%
2nd Strongest	Percentage of Population without Health Insurance	11.19%	11.23%

Bottom 10 in NC	Total Percentage of Population Below 150% Poverty Line	38.55%	25.93%
Bottom 10 in NC	Gini Coefficient (Income Inequality)	0.52	0.46
Bottom 10 in NC, Weakest	Unemployment Rate (Q4)	6.1%	3.9%

Education: 16.58

This component evaluates the quality of educational institutions and the educational attainment levels of the local population, which play a crucial role in developing a skilled and adaptable workforce. Warren County's performance on this dimension is weak when compared to other North Carolina counties, ranking 96th in the state.

Notable variables for Warren County within this dimension include:

VARIABLE STRENGTH	FACTOR	WARREN COUNTY VALUE	NC COUNTY AVERAGE VALUE
Strongest	Postsecondary Enrollment Percentage	31.95%	25.48%
2nd Strongest	Local LEA Financial Resources (per ADM)	\$7,603	\$8,683
Bottom 10 in NC	Dropout Rate	3.28%	1.65%
Bottom 10 in NC	3rd Grade Reading Proficiency	22.9%	43.1%
Bottom 10 in NC, Weakest	Graduation Percentage	75.6%	88.03%

Household Characteristics: 12.63

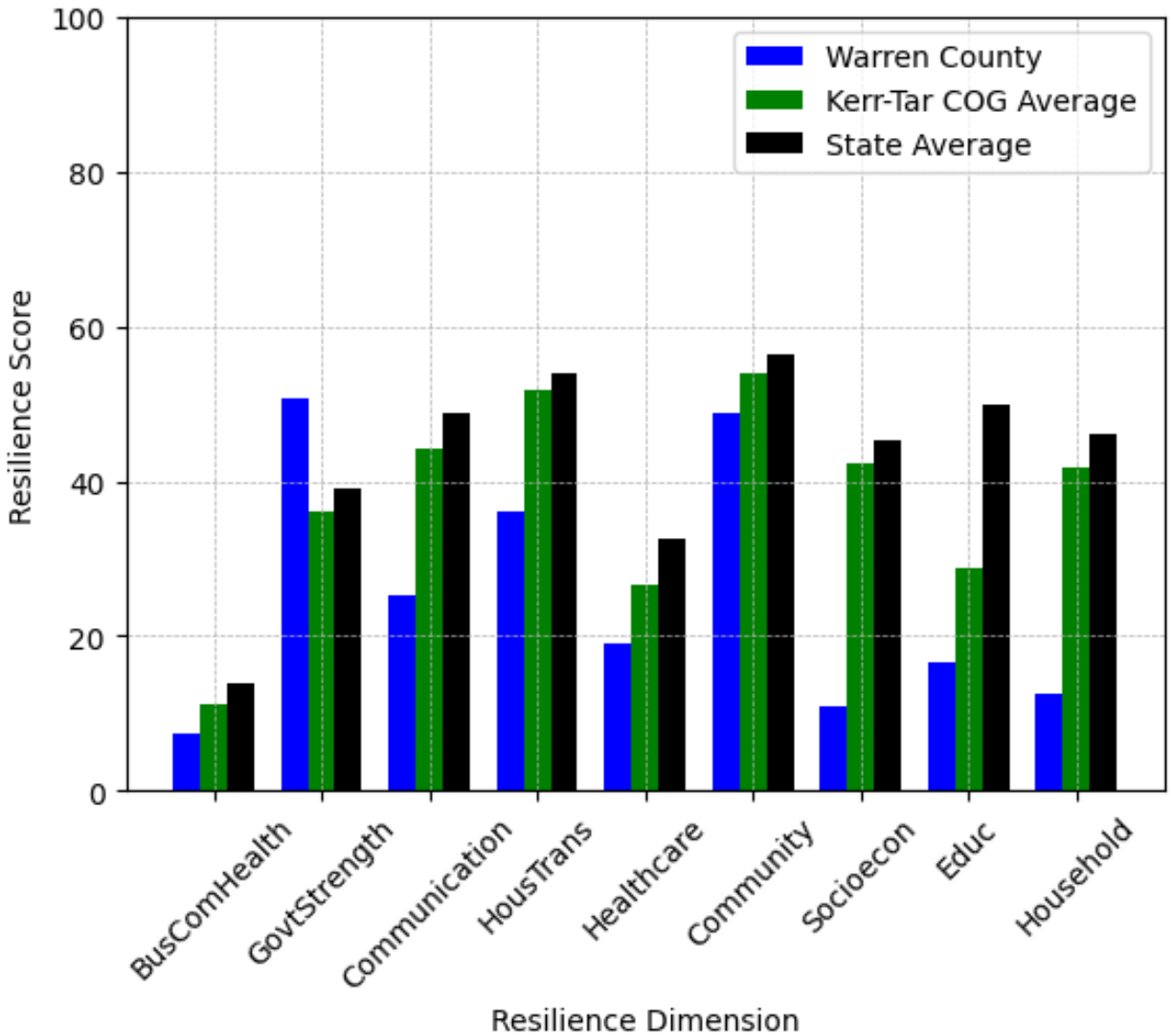
This component examines factors such as the proportion of single-parent households, age distribution, and the proportion of individuals with disabilities, as these elements can influence a community's resilience and ability to recover from economic disruptions. Warren County's performance on this dimension is weak when compared to other North Carolina counties, ranking 96th in the state.

Notable variables for Warren County within this dimension include:

VARIABLE STRENGTH	FACTOR	WARREN COUNTY VALUE	NC COUNTY AVERAGE VALUE
Strongest	Percentage of Population 17 and Younger	18%	20.37%
2nd Strongest	Percentage of Population	0.968%	1.454%

	with Limited English Proficiency		
Bottom 10 in NC	Percentage of Population with a Disability	21.984%	16.566%
Bottom 10 in NC, Weakest	Percentage of Single Parent Households	65.366%	36.132%

Warren County's Resilience Dimension Scores Over Time As Compared to the Region and State Averages



Note: Resilience Scores are normalized from 1 to 100 with the most resilient county scoring 100. The Resilience Score is determined based on a county's performance relative to NC's other 99 counties.

Notable Trends in Resilience Indicators, 2017-2022

NOTE: The key trends in the this section are identified based on change rates of at least .15 standard deviations over at least 5 years. Variables are positively oriented such that a positive trend indicates improved performance (e.g., 'improvement' in property crime is a lower crime rate, while 'decline' in property crime indicates a higher crime rate).

Trends in the Business Community Health dimension:

Total Employment Level: **-204** (5-year change rate = **-6.57%**, from 3,112 to 2,907)

→ No change in rank

Average Weekly Wages: **133 dollars** (5-year change rate = **21.21%**, from 627 to 760)

↓ Change in rank from 95 to 98 in NC

Real GDP in Current Dollars: **18,727 dollars** (5-year change rate = **6.28%**, from 298,067 to 316,794)

↑ Change in rank from 90 to 89 in NC

Trends in the County Government Fiscal Strength dimension:

Adjusted Tax Base: **14,620 dollars** (5-year change rate = **12.34%**, from 118,440 to 133,060)

↓ Change in rank from 25 to 31 in NC

County Sales Tax: **1,518,012 dollars** (5-year change rate = **56.6%**, from 2,681,838 to 4,199,850)

↑ Change in rank from 86 to 85 in NC

Trends in the Housing & Transportation dimension:

Ratio of Average Estimated Home Value to Median Income : **4.27** (5-year change rate = **37.1%**, from 11.51 to 15.78)

↓ Change in rank from 75 to 76 in NC

Average Available Rent Money less the Average HUD Fair Market Rent: **176.4 dollars** (5-year change rate = **39.49%**, from 446.7 to 623.1)

↓ Change in rank from 66 to 73 in NC

Trends in the Healthcare dimension:

Opioid Deaths per 100,000 Residents: **30.4** (5-year change rate = **N/A**, from 0 to 30.4)

↓ Change in rank from 2 to 32 in NC

Nurses per 10,000 Residents: **-3.23** (5-year change rate = **-7.74%**, from 41.72 to 38.49)

→ No change in rank

Physicians per 10,000 Residents: **1.64** (5-year change rate = **79.23%**, from 2.07 to 3.71)

↑ Change in rank from 95 to 90 in NC

Mental Health Professionals per 10,000 Residents: **-0.99** (5-year change rate = **-38.37%**, from 2.58 to 1.59)

↓ Change in rank from 91 to 97 in NC

Trends in the Community Cohesion dimension:

Violent Crimes per 10,000 Residents: **2.75** (4-year change rate = **249.72%**, from 1.1 to 3.85)

↓ Change in rank from 18 to 72 in NC

Property Crimes per 10,000 Residents: **9.74** (4-year change rate = **90.57%**, from 10.76 to 20.5)

↓ Change in rank from 15 to 77 in NC

Nonprofits Organizations per 1,000 Residents: **0.29** (5-year change rate = **17.14%**, from 1.67 to 1.95)

↑ Change in rank from 85 to 79 in NC

Trends in the Socioeconomics dimension:

Unemployment Rate (Q4): **-0.5 percent** (5-year change rate = **-7.61%**, from 6.6 to 6.1)

↓ Change in rank from 93 to 99 in NC

Median Household Income: **10,800 dollars** (5-year change rate = **23.33%**, from 46,300 to 57,100)

↓ Change in rank from 78 to 79 in NC

Trends in the Education dimension:

Graduation Percentage: **3.7 percent** (5-year change rate = **5.15%**, from 71.9 to 75.6)

↑ Change in rank from 100 to 98 in NC

Dropout Rate: **-1.3 percent** (5-year change rate = **-28.4%**, from 4.58 to 3.28)

↑ Change in rank from 98 to 96 in NC

3rd Grade Reading Proficiency: **-19.9 percent** (5-year change rate = **-46.5%**, from 42.8 to 22.9)

↓ Change in rank from 89 to 97 in NC

Postsecondary Enrollment Percentage: **0.19 percent** (5-year change rate = **142.5%**, from 0.13 to 0.32)

↑ Change in rank from 97 to 15 in NC

Data Advisements:

- This county has a population under 20,000 residents according to the US Census Bureau; in low population areas, some variable estimates can be less stable and more sensitive to changes.
- Science, Engineering, & Technology Industries Employment Percentage is not available for 2022 and was excluded from calculating this county's dimension and resilience score.
- Availability of Broadband Services is not available for 2022 and was excluded from calculating this county's dimension and resilience score.
- Adoption Rate of Broadband Services is not available for 2022 and was excluded from calculating this county's dimension and resilience score.