

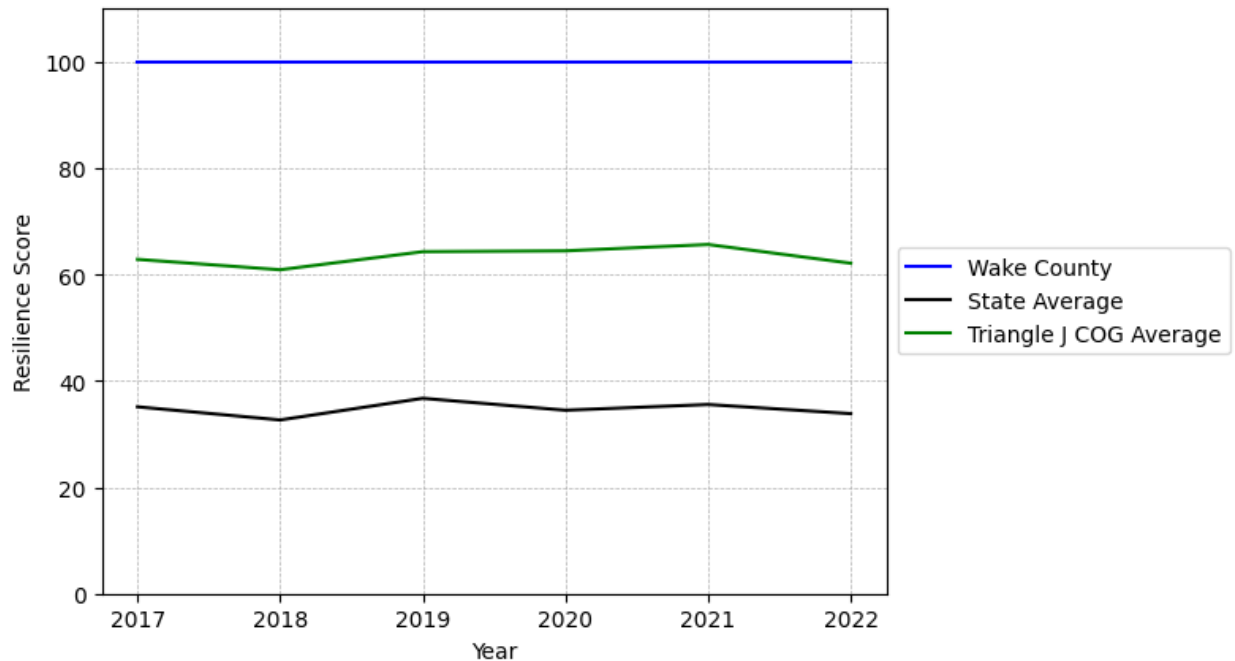
# Wake County Summary

---

## Resilience Score: 100

In 2022, Wake County achieved a Resilience Score of 100, which is strong as compared to the North Carolina State average.

**Wake County's Resilience Score Over Time  
As Compared to the Region and State Averages**



*Note: Resilience Scores are normalized from 1 to 100 with the most resilient county scoring 100. The Resilience Score is determined based on a county's performance relative to NC's other 99 counties.*

Wake County's Resilience Score is comprised of 9 distinct dimensions of resilience. Below are Wake County's scores for 2022 on those 9 dimensions, and their rank relative to other North Carolina counties.

### **Business Community Health: 87.88**

This component examines the strength and diversity of the local business community, including factors such as the number of businesses, employment levels, and industry diversity. Wake County's performance on this dimension is strong when compared to other North Carolina counties, ranking 2nd in the state.

Notable variables for Wake County within this dimension include:

<b>VARIABLE STRENGTH</b>	<b>FACTOR</b>	<b>WAKE COUNTY VALUE</b>	<b>NC COUNTY AVERAGE VALUE</b>
<b>Top 10 in NC, Strongest</b>	Percentage of Companies in Science, Engineering, & Technology Industries	18.26%	6.13%
<b>Top 10 in NC, 2nd Strongest</b>	Total Employment Level	628,936	45,758
<b>Top 10 in NC</b>	Real GDP in Current Dollars	\$94,675,594	\$6,092,555
<b>Top 10 in NC</b>	Science, Engineering, & Technology Industries Employment Percentage	11.5%	1.79%
<b>Top 10 in NC</b>	Average Weekly Wages	\$1,426	\$951
<b>Bottom 10 in NC, Weakest</b>	Private Sector Diversity	0.016	0.28

---

### **County Government Fiscal Strength: 79.95**

This component looks at the financial health of local governments, including their ability to generate revenue, manage debt, and maintain adequate reserves to weather economic downturns. Wake County's performance on this dimension is strong when compared to other North Carolina counties, ranking 6th in the state.

Notable variables for Wake County within this dimension include:

<b>VARIABLE STRENGTH</b>	<b>FACTOR</b>	<b>WAKE COUNTY VALUE</b>	<b>NC COUNTY AVERAGE VALUE</b>
<b>Top 10 in NC, Strongest</b>	Dependency Ratio of County Government	0.05	0.16
<b>Top 10 in NC, 2nd Strongest</b>	County Sales Tax	\$272,221,664	\$31,151,902
<b>Bottom 10 in NC, Weakest</b>	Debt Service Ratio of County Government	0.21	0.07

---

### Communication: 100

This component assesses the availability and quality of communication infrastructure, such as broadband internet access, which is crucial for businesses and residents to stay connected and resilient during disruptions. Wake County's performance on this dimension is strong when compared to other North Carolina counties, ranking 1st in the state.

Notable variables for Wake County within this dimension include:

VARIABLE STRENGTH	FACTOR	WAKE COUNTY VALUE	NC COUNTY AVERAGE VALUE
Top 10 in NC, Strongest	Percentage of Population without Smartphones	5.71%	17.22%
Top 10 in NC, 2nd Strongest	Local High-Speed Mobile Data Availability	0.99	0.66
Top 10 in NC	In-Vehicle High-Speed Mobile Data Availability	0.91	0.37
Top 10 in NC, Weakest	Broadband Availability	0.86	0.6

---

### Housing & Transportation: 99.72

This component evaluates the accessibility and affordability of housing, as well as the availability of reliable transportation options, which are essential for a resilient workforce and economy. Wake County's performance on this dimension is strong when compared to other North Carolina counties, ranking 2nd in the state.

Notable variables for Wake County within this dimension include:

VARIABLE STRENGTH	FACTOR	WAKE COUNTY VALUE	NC COUNTY AVERAGE VALUE
Top 10 in NC, Strongest	Average Available Rent Money less the Average HUD Fair Market Rent	\$1,385.9	\$799.87
Top 10 in NC, 2nd Strongest	Ratio of Average Estimated Home Value to Median Income	0.9	13.67
Top 10 in NC	Percentage of Homes Built Before 1980	19.54%	40.9%
Weakest	Percentage of People Driving Alone to Work	87.15%	86.36%

**Healthcare: 60.44**

The healthcare component examines the availability and quality of healthcare facilities, services, and professionals, which are critical for maintaining a healthy and productive workforce. Wake County's performance on this dimension is strong when compared to other North Carolina counties, ranking 4th in the state.

Notable variables for Wake County within this dimension include:

VARIABLE STRENGTH	FACTOR	WAKE COUNTY VALUE	NC COUNTY AVERAGE VALUE
Top 10 in NC, Strongest	Nurses per 10,000 Residents	1,742.37	262.64
Top 10 in NC, 2nd Strongest	Opioid Deaths per 100,000 Residents	18.7	38.73
Top 10 in NC	Mental Health Professionals per 10,000 Residents	11.25	6.6
Bottom 10 in NC, Weakest	Nursing Home Beds per 1,000 Residents of Age 65+	15.91	27.53

**Community Cohesion: 57.13**

This component looks at the strength of social networks, community engagement, and the ability of residents to work together to address challenges and support one another during times of adversity. Wake County's performance on this dimension is average when compared to other North Carolina counties, ranking 50th in the state.

Notable variables for Wake County within this dimension include:

VARIABLE STRENGTH	FACTOR	WAKE COUNTY VALUE	NC COUNTY AVERAGE VALUE
Strongest	Nonprofits Organizations per 1,000 Residents	4.03	3.17
2nd Strongest	Yearly Population Change Percentage	1.487%	0.906%
Weakest	Percentage of Inactive Voters	13.41%	11.3%

**Socioeconomics: 100**

This component considers factors such as income levels, poverty rates, and inequality, which can impact a community's ability to withstand and recover from economic shocks. Wake County's

performance on this dimension is strong when compared to other North Carolina counties, ranking 1st in the state.

Notable variables for Wake County within this dimension include:

VARIABLE STRENGTH	FACTOR	WAKE COUNTY VALUE	NC COUNTY AVERAGE VALUE
Top 10 in NC, Strongest	Median Household Income	\$110,1	\$70,088
Top 10 in NC, 2nd Strongest	Percentage of Population without a High School Diploma	4.07%	9.05%
Top 10 in NC	Population 25+ with at least a Bachelor's Degree	55.65%	24.4%
Top 10 in NC	Unemployment Rate (Q4)	3%	3.9%
Top 10 in NC	Percentage of Households with Income over \$200k	17.26%	5.28%
Top 10 in NC	Total Percentage of Population Below 150% Poverty Line	13.85%	25.93%
Top 10 in NC	Percentage of Population without Health Insurance	8.31%	11.23%
Weakest	Percentage of Households Spending more than 30% Income on Housing	23.3%	24.53%

### Education: 72.18

This component evaluates the quality of educational institutions and the educational attainment levels of the local population, which play a crucial role in developing a skilled and adaptable workforce. Wake County's performance on this dimension is strong when compared to other North Carolina counties, ranking 7th in the state.

Notable variables for Wake County within this dimension include:

VARIABLE STRENGTH	FACTOR	WAKE COUNTY VALUE	NC COUNTY AVERAGE VALUE
Top 10 in NC, Strongest	3rd Grade Reading Proficiency	58.6%	43.1%
Top 10 in NC, 2nd Strongest	Postsecondary Enrollment Percentage	39.84%	25.48%
Weakest	Student to Teacher Ratio	14	14

### Household Characteristics: 68.65

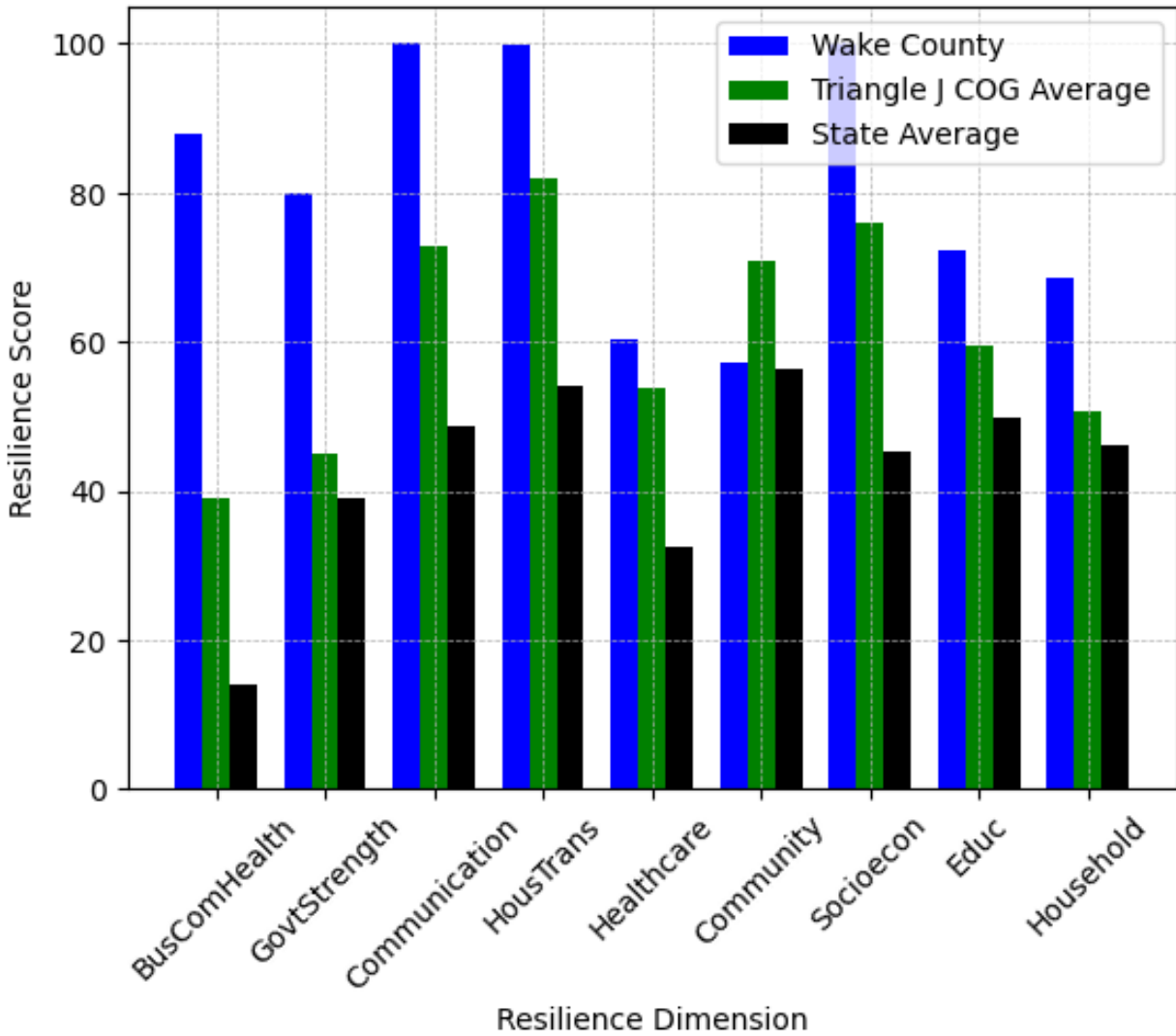
This component examines factors such as the proportion of single-parent households, age distribution, and the proportion of individuals with disabilities, as these elements can influence a community's resilience and ability to recover from economic disruptions. Wake County's performance on this dimension is strong when compared to other North Carolina counties, ranking 4th in the state.

Notable variables for Wake County within this dimension include:

<b>VARIABLE STRENGTH</b>	<b>FACTOR</b>	<b>WAKE COUNTY VALUE</b>	<b>NC COUNTY AVERAGE VALUE</b>
<b>Top 10 in NC, Strongest</b>	Percentage of Population with a Disability	8.843%	16.566%
<b>Top 10 in NC, 2nd Strongest</b>	Percentage of Population 65 and Older	12.24%	20.53%
<b>Weakest</b>	Percentage of Population 17 and Younger	23.36%	20.37%

---

## Wake County's Resilience Dimension Scores Over Time As Compared to the Region and State Averages



*Note: Resilience Scores are normalized from 1 to 100 with the most resilient county scoring 100. The Resilience Score is determined based on a county's performance relative to NC's other 99 counties.*

## **Notable Trends in Resilience Indicators, 2017-2022**

*NOTE: The key trends in the this section are identified based on change rates of at least .15 standard deviations over at least 5 years. Variables are positively oriented such that a positive trend indicates improved performance (e.g., 'improvement' in property crime is a lower crime rate, while 'decline' in property crime indicates a higher crime rate).*

### **Trends in the Business Community Health dimension:**

Total Employment Level: **75,829** (5-year change rate = **13.71%**, from 553,107 to 628,936)

→ No change in rank

Average Weekly Wages: **308 dollars** (5-year change rate = **27.55%**, from 1,118 to 1,426)

→ No change in rank

Real GDP in Current Dollars: **18,686,567 dollars** (5-year change rate = **24.59%**, from 75,989,027 to 94,675,594)

→ No change in rank

### **Trends in the County Government Fiscal Strength dimension:**

Adjusted Tax Base: **32,603 dollars** (5-year change rate = **27.32%**, from 119,336 to 151,939)

↑ Change in rank from 24 to 20 in NC

County Sales Tax: **89,856,432 dollars** (5-year change rate = **49.27%**, from 182,365,232 to 272,221,664)

→ No change in rank

### **Trends in the Housing & Transportation dimension:**

Ratio of Average Estimated Home Value to Median Income : **0.24** (5-year change rate = **36.51%**, from 0.66 to 0.9)

→ No change in rank

Average Available Rent Money less the Average HUD Fair Market Rent: **467.9 dollars** (5-year change rate = **50.97%**, from 918 to 1,385.9)



→ No change in rank

**Trends in the Healthcare dimension:**

Opioid Deaths per 100,000 Residents: **4.4** (5-year change rate = **30.77%**, from 14.3 to 18.7)

↑ Change in rank from 19 to 9 in NC

Nurses per 10,000 Residents: **127.37** (5-year change rate = **7.89%**, from 1,615 to 1,742.37)

→ No change in rank

Physicians per 10,000 Residents: **2.29** (5-year change rate = **9.59%**, from 23.87 to 26.16)

↑ Change in rank from 14 to 12 in NC

Mental Health Professionals per 10,000 Residents: **1.52** (5-year change rate = **15.62%**, from 9.73 to 11.25)

↑ Change in rank from 11 to 9 in NC

**Trends in the Community Cohesion dimension:**

Violent Crimes per 10,000 Residents: **0.44** (4-year change rate = **18.78%**, from 2.36 to 2.8)

→ No change in rank

Property Crimes per 10,000 Residents: **0.38** (4-year change rate = **2.28%**, from 16.51 to 16.88)

↓ Change in rank from 43 to 65 in NC

**Trends in the Socioeconomics dimension:**

Unemployment Rate (Q4): **-0.6 percent** (5-year change rate = **-17.59%**, from 3.6 to 3)

↑ Change in rank from 5 to 3 in NC

Median Household Income: **29,900 dollars** (5-year change rate = **37.28%**, from 80,200 to 110,100)

→ No change in rank

**Trends in the Education dimension:**

Graduation Percentage: **3.4 percent** (5-year change rate = **3.83%**, from 88.7 to 92.1)

↑ Change in rank from 36 to 16 in NC

Dropout Rate: **-1.73 percent** (5-year change rate = **-62.81%**, from 2.76 to 1.03)

↑ Change in rank from 70 to 26 in NC

Student to Teacher Ratio: **-1** (4-year change rate = **-4.56%**, from 15 to 14)

↑ Change in rank from 58 to 53 in NC

3rd Grade Reading Proficiency: **-6.6 percent** (5-year change rate = **-10.12%**, from 65.2 to 58.6)

↑ Change in rank from 8 to 3 in NC

**Data Advisements:**

- Availability of Broadband Services is not available for 2022 and was excluded from calculating this county's dimension and resilience score.
- Adoption Rate of Broadband Services is not available for 2022 and was excluded from calculating this county's dimension and resilience score.