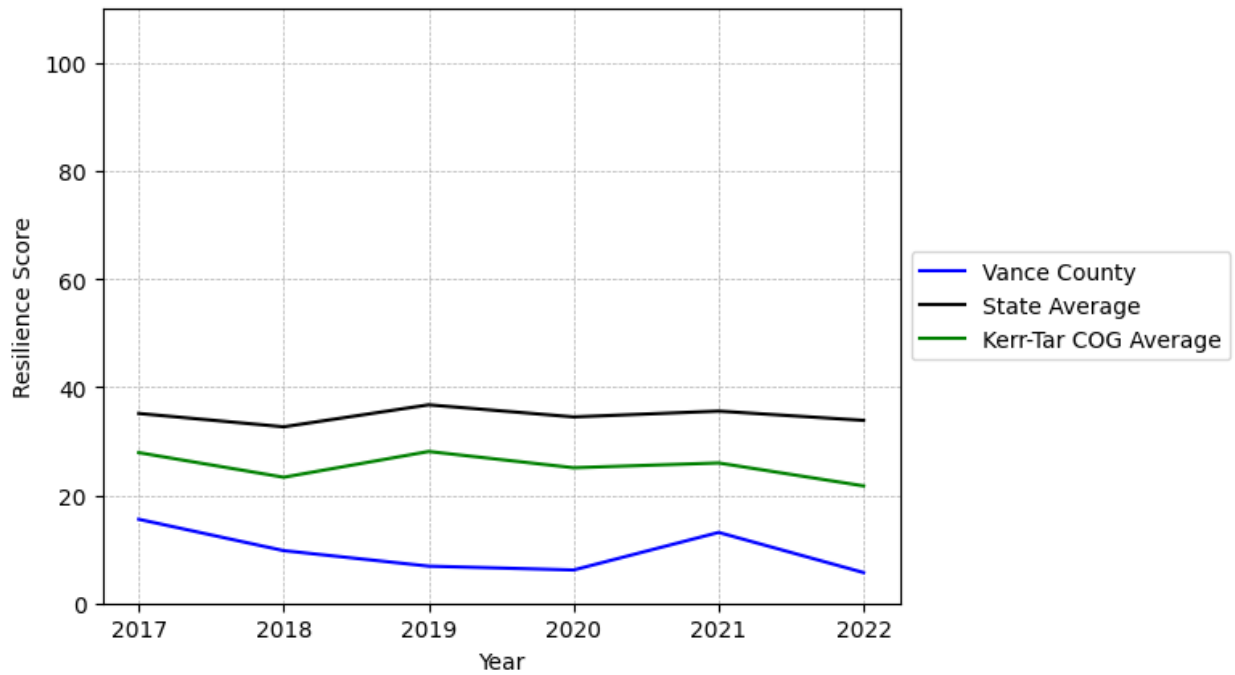


Vance County Summary

Resilience Score: 5.68

In 2022, Vance County achieved a Resilience Score of 5.68, which is weak as compared to the North Carolina State average.

**Vance County's Resilience Score Over Time
As Compared to the Region and State Averages**



Note: Resilience Scores are normalized from 1 to 100 with the most resilient county scoring 100. The Resilience Score is determined based on a county's performance relative to NC's other 99 counties.

Vance County's Resilience Score is comprised of 9 distinct dimensions of resilience. Below are Vance County's scores for 2022 on those 9 dimensions, and their rank relative to other North Carolina counties.

Business Community Health: 14.32

This component examines the strength and diversity of the local business community, including factors such as the number of businesses, employment levels, and industry diversity. Vance County's performance on this dimension is average when compared to other North Carolina counties, ranking 30th in the state.

Notable variables for Vance County within this dimension include:

VARIABLE STRENGTH	FACTOR	VANCE COUNTY VALUE	NC COUNTY AVERAGE VALUE
Strongest	Science, Engineering, & Technology Industries Employment Percentage	2.3%	1.79%
2nd Strongest	Ratio of Available Child Care Slots to Number of Children under Five	0.67	0.59
Weakest	Real GDP in Current Dollars	\$1,265,122	\$6,092,555

County Government Fiscal Strength: 25.71

This component looks at the financial health of local governments, including their ability to generate revenue, manage debt, and maintain adequate reserves to weather economic downturns. Vance County's performance on this dimension is fairly weak when compared to other North Carolina counties, ranking 79th in the state.

Notable variables for Vance County within this dimension include:

VARIABLE STRENGTH	FACTOR	VANCE COUNTY VALUE	NC COUNTY AVERAGE VALUE
Strongest	Quick Ratio of County Government	18.88	16.4
2nd Strongest	Debt Service Ratio of County Government	0.06	0.07
Bottom 10 in NC, Weakest	Adjusted Tax Base	\$68,202	\$124,092

Communication: 50.83

This component assesses the availability and quality of communication infrastructure, such as broadband internet access, which is crucial for businesses and residents to stay connected and resilient during disruptions. Vance County's performance on this dimension is average when compared to other North Carolina counties, ranking 45th in the state.

Notable variables for Vance County within this dimension include:

VARIABLE STRENGTH	FACTOR	VANCE COUNTY VALUE	NC COUNTY AVERAGE VALUE
Strongest	In-Vehicle High-Speed Mobile Data Availability	0.42	0.37
2nd Strongest	Local High-Speed Mobile Data Availability	0.69	0.66
Weakest	Broadband Availability	0.52	0.6

Housing & Transportation: 36.41

This component evaluates the accessibility and affordability of housing, as well as the availability of reliable transportation options, which are essential for a resilient workforce and economy. Vance County's performance on this dimension is weak when compared to other North Carolina counties, ranking 86th in the state.

Notable variables for Vance County within this dimension include:

VARIABLE STRENGTH	FACTOR	VANCE COUNTY VALUE	NC COUNTY AVERAGE VALUE
Strongest	Percentage of Households with More Residents than Rooms	1.97%	2.1%
2nd Strongest	Ratio of Average Estimated Home Value to Median Income	8.25	13.67
Weakest	Percentage of Owner-Occupied Homes	49.08%	57.87%

Healthcare: 23.38

The healthcare component examines the availability and quality of healthcare facilities, services, and professionals, which are critical for maintaining a healthy and productive workforce. Vance County's performance on this dimension is average when compared to other North Carolina counties, ranking 65th in the state.

Notable variables for Vance County within this dimension include:

VARIABLE STRENGTH	FACTOR	VANCE COUNTY VALUE	NC COUNTY AVERAGE VALUE
Strongest	Physicians per 10,000 Residents	16.66	16.05
2nd Strongest	Mental Health	5.96	6.6

	Professionals per 10,000 Residents		
Weakest	Nursing Home Beds per 1,000 Residents of Age 65+	21.2	27.53

Community Cohesion: 21.71

This component looks at the strength of social networks, community engagement, and the ability of residents to work together to address challenges and support one another during times of adversity. Vance County's performance on this dimension is weak when compared to other North Carolina counties, ranking 97th in the state.

Notable variables for Vance County within this dimension include:

VARIABLE STRENGTH	FACTOR	VANCE COUNTY VALUE	NC COUNTY AVERAGE VALUE
Strongest	Nonprofits Organizations per 1,000 Residents	3	3.17
2nd Strongest	Percentage of Inactive Voters	13.71%	11.3%
Bottom 10 in NC	Yearly Population Change Percentage	-0.881%	0.906%
Bottom 10 in NC, Weakest	Violent Crimes per 10,000 Residents	8.89	3.07

Socioeconomics: 16.93

This component considers factors such as income levels, poverty rates, and inequality, which can impact a community's ability to withstand and recover from economic shocks. Vance County's performance on this dimension is weak when compared to other North Carolina counties, ranking 91st in the state.

Notable variables for Vance County within this dimension include:

VARIABLE STRENGTH	FACTOR	VANCE COUNTY VALUE	NC COUNTY AVERAGE VALUE
Strongest	Gini Coefficient (Income Inequality)	0.46	0.46
2nd Strongest	Population 25+ with at least a Bachelor's Degree	17.81%	24.4%
Bottom 10 in NC	Percentage of Households with Income over \$200k	2.03%	5.28%
Bottom 10 in NC,	Unemployment Rate (Q4)	5.7%	3.9%

Education: 13.88

This component evaluates the quality of educational institutions and the educational attainment levels of the local population, which play a crucial role in developing a skilled and adaptable workforce. Vance County's performance on this dimension is weak when compared to other North Carolina counties, ranking 98th in the state.

Notable variables for Vance County within this dimension include:

VARIABLE STRENGTH	FACTOR	VANCE COUNTY VALUE	NC COUNTY AVERAGE VALUE
Strongest	Teacher Attrition Rate	0.12	0.12
2nd Strongest	Local LEA Financial Resources (per ADM)	\$5,567	\$8,683
Bottom 10 in NC	Dropout Rate	3.09%	1.65%
Bottom 10 in NC	Postsecondary Enrollment Percentage	13.98%	25.48%
Bottom 10 in NC	Student to Teacher Ratio	17	14
Bottom 10 in NC, Weakest	3rd Grade Reading Proficiency	22.6%	43.1%

Household Characteristics: 24.82

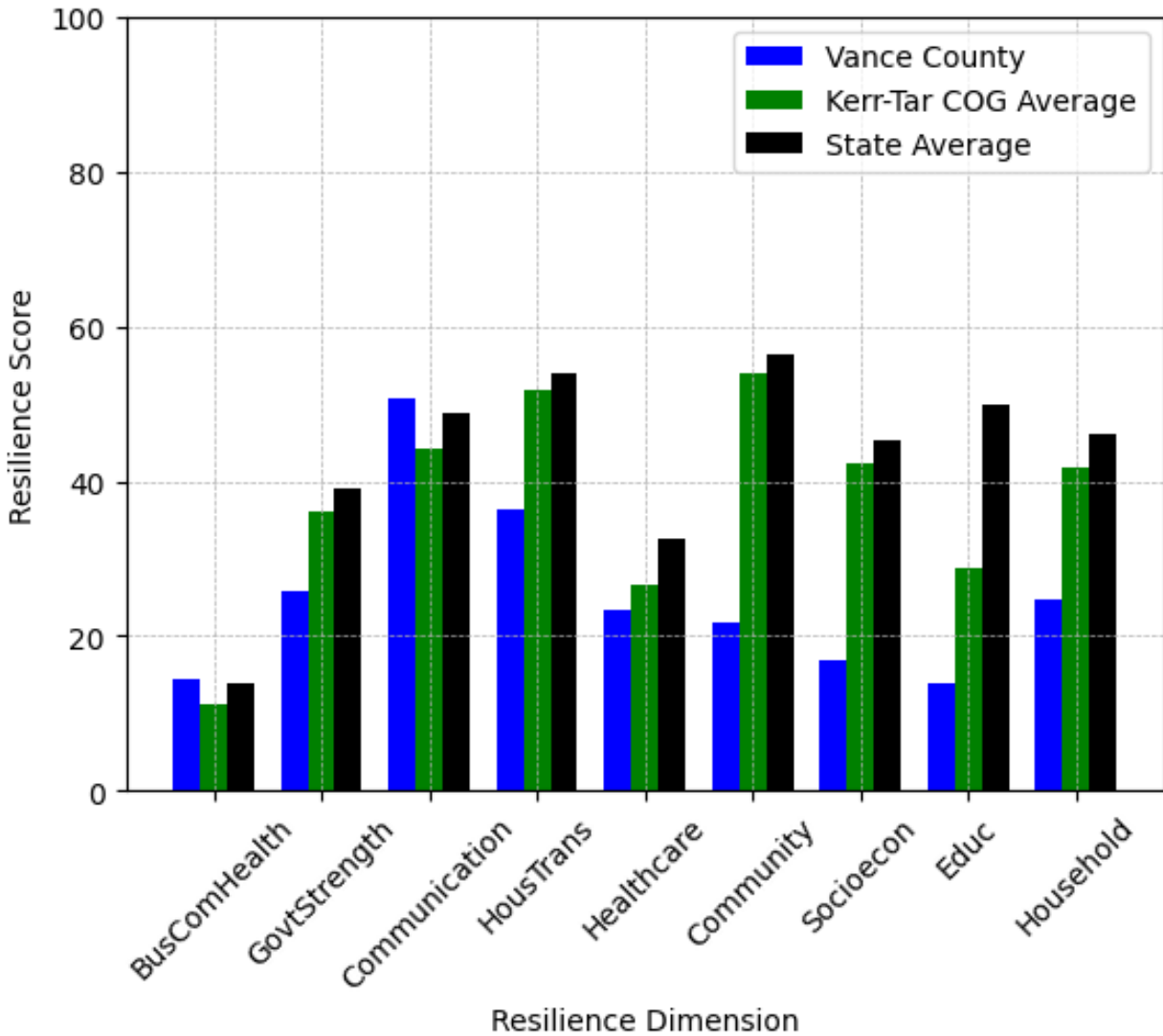
This component examines factors such as the proportion of single-parent households, age distribution, and the proportion of individuals with disabilities, as these elements can influence a community's resilience and ability to recover from economic disruptions. Vance County's performance on this dimension is weak when compared to other North Carolina counties, ranking 91st in the state.

Notable variables for Vance County within this dimension include:

VARIABLE STRENGTH	FACTOR	VANCE COUNTY VALUE	NC COUNTY AVERAGE VALUE
Strongest	Percentage of Population 65 and Older	18.67%	20.53%
2nd Strongest	Percentage of Population with Limited English Proficiency	1.344%	1.454%
Bottom 10 in NC, Weakest	Percentage of Single Parent Households	50.846%	36.132%



Vance County's Resilience Dimension Scores Over Time As Compared to the Region and State Averages



Note: Resilience Scores are normalized from 1 to 100 with the most resilient county scoring 100. The Resilience Score is determined based on a county's performance relative to NC's other 99 counties.

Notable Trends in Resilience Indicators, 2017-2022

NOTE: The key trends in the this section are identified based on change rates of at least .15 standard deviations over at least 5 years. Variables are positively oriented such that a positive trend indicates improved performance (e.g., 'improvement' in property crime is a lower crime rate, while 'decline' in property crime indicates a higher crime rate).

Trends in the Business Community Health dimension:

Total Employment Level: **-671** (5-year change rate = **-4.5%**, from 14,920 to 14,249)

↓ Change in rank from 56 to 58 in NC

Average Weekly Wages: **224 dollars** (5-year change rate = **32.51%**, from 689 to 913)

↑ Change in rank from 70 to 51 in NC

Real GDP in Current Dollars: **-63,371 dollars** (5-year change rate = **-4.77%**, from 1,328,493 to 1,265,122)

→ No change in rank

Trends in the County Government Fiscal Strength dimension:

Adjusted Tax Base: **15,881 dollars** (5-year change rate = **30.35%**, from 52,321 to 68,202)

↑ Change in rank from 98 to 97 in NC

County Sales Tax: **4,568,054 dollars** (5-year change rate = **50.93%**, from 8,968,650 to 13,536,704)

↑ Change in rank from 57 to 56 in NC

Trends in the Housing & Transportation dimension:

Ratio of Average Estimated Home Value to Median Income : **2.64** (5-year change rate = **47.09%**, from 5.61 to 8.25)

↓ Change in rank from 47 to 50 in NC

Average Available Rent Money less the Average HUD Fair Market Rent: **81.9 dollars** (5-year change rate = **18.12%**, from 452 to 533.9)

↓ Change in rank from 65 to 84 in NC

Trends in the Healthcare dimension:

Opioid Deaths per 100,000 Residents: **2** (5-year change rate = **5.9%**, from 33.9 to 35.9)

↑ Change in rank from 80 to 49 in NC

Nurses per 10,000 Residents: **-7.87** (5-year change rate = **-5.17%**, from 152.36 to 144.49)

↓ Change in rank from 55 to 58 in NC

Mental Health Professionals per 10,000 Residents: **1.08** (5-year change rate = **22.13%**, from 4.88 to 5.96)

↑ Change in rank from 58 to 45 in NC

Trends in the Community Cohesion dimension:

Violent Crimes per 10,000 Residents: **1.57** (4-year change rate = **21.39%**, from 7.32 to 8.89)

→ No change in rank

Property Crimes per 10,000 Residents: **-5.72** (4-year change rate = **-17.85%**, from 32.04 to 26.32)

↓ Change in rank from 87 to 88 in NC

Nonprofits Organizations per 1,000 Residents: **-0.19** (5-year change rate = **-5.98%**, from 3.19 to 3)

↓ Change in rank from 34 to 55 in NC

Trends in the Socioeconomics dimension:

Median Household Income: **9,700 dollars** (5-year change rate = **21.46%**, from 45,200 to 54,900)

↓ Change in rank from 81 to 88 in NC

Trends in the Education dimension:

Graduation Percentage: **2.5 percent** (5-year change rate = **2.98%**, from 83.8 to 86.3)

↑ Change in rank from 77 to 75 in NC

Student to Teacher Ratio: **2** (4-year change rate = **11.91%**, from 15 to 17)

↓ Change in rank from 51 to 95 in NC

3rd Grade Reading Proficiency: **-23.5 percent** (5-year change rate = **-50.98%**, from 46.1 to 22.6)

↓ Change in rank from 83 to 98 in NC

Data Advisements:

- Availability of Broadband Services is not available for 2022 and was excluded from calculating this county's dimension and resilience score.
- Adoption Rate of Broadband Services is not available for 2022 and was excluded from calculating this county's dimension and resilience score.