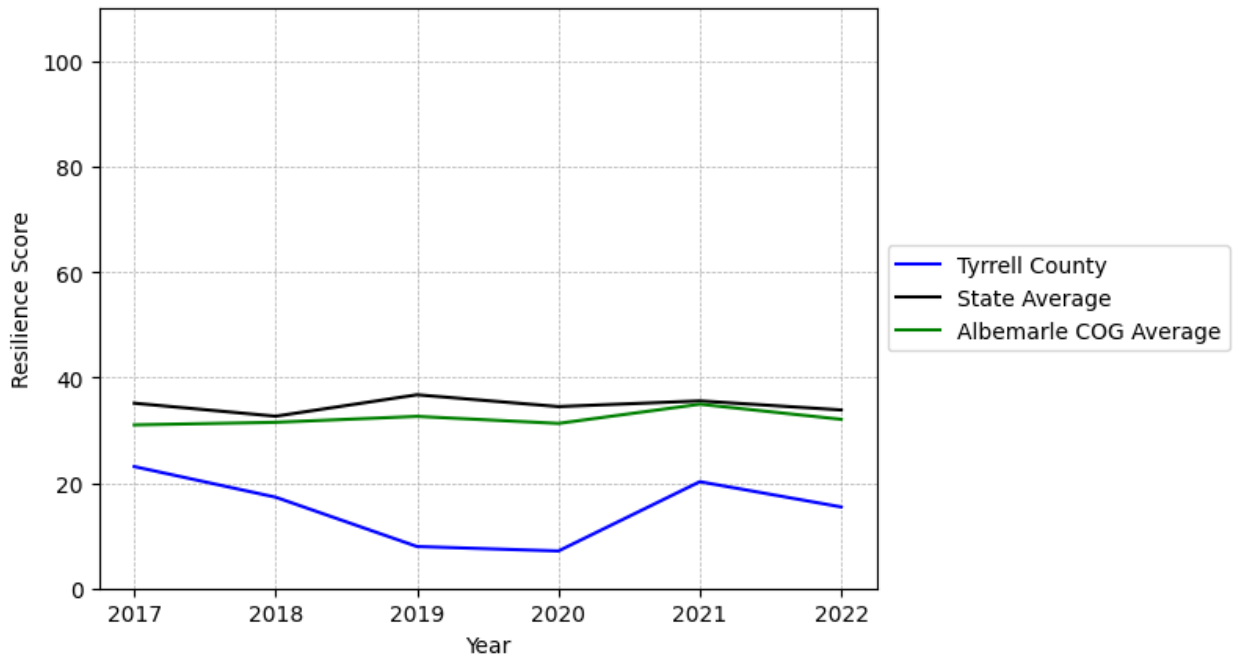


Tyrrell County Summary

Resilience Score: 15.44

In 2022, Tyrrell County achieved a Resilience Score of 15.44, which is fairly weak as compared to the North Carolina State average.

**Tyrrell County's Resilience Score Over Time
As Compared to the Region and State Averages**



Note: Resilience Scores are normalized from 1 to 100 with the most resilient county scoring 100. The Resilience Score is determined based on a county's performance relative to NC's other 99 counties.

Tyrrell County's Resilience Score is comprised of 9 distinct dimensions of resilience. Below are Tyrrell County's scores for 2022 on those 9 dimensions, and their rank relative to other North Carolina counties.

Business Community Health: 21.18

This component examines the strength and diversity of the local business community, including factors such as the number of businesses, employment levels, and industry diversity. Tyrrell County's performance on this dimension is average when compared to other North Carolina counties, ranking 15th in the state.

Notable variables for Tyrrell County within this dimension include:

VARIABLE STRENGTH	FACTOR	TYRRELL COUNTY VALUE	NC COUNTY AVERAGE VALUE
Top 10 in NC, Strongest	Private Sector Diversity	0.744	0.28
Top 10 in NC, 2nd Strongest	Ratio of Available Child Care Slots to Number of Children under Five	0.89	0.59
Bottom 10 in NC	Average Weekly Wages	\$802	\$951
Bottom 10 in NC	Total Employment Level	1,008	45,758
Bottom 10 in NC	Real GDP in Current Dollars	\$102,683	\$6,092,555
Bottom 10 in NC	Percentage of Companies in Science, Engineering, & Technology Industries	1.98%	6.13%
Weakest	Science, Engineering, & Technology Industries Employment Percentage	N/A	1.79%

County Government Fiscal Strength: 15.03

This component looks at the financial health of local governments, including their ability to generate revenue, manage debt, and maintain adequate reserves to weather economic downturns. Tyrrell County's performance on this dimension is weak when compared to other North Carolina counties, ranking 91st in the state.

Notable variables for Tyrrell County within this dimension include:

VARIABLE STRENGTH	FACTOR	TYRRELL COUNTY VALUE	NC COUNTY AVERAGE VALUE
Top 10 in NC, Strongest	Debt Service Ratio of County Government	0.01	0.07
2nd Strongest	Adjusted Tax Base	\$137,071	\$124,092
Bottom 10 in NC	Quick Ratio of County Government	5.46	16.4
Bottom 10 in NC	Capital Assets Condition Ratio of County Government	0.37	0.51
Bottom 10 in NC	Solvency Ratio of County Government	19.33	46.7
Bottom 10 in NC, Weakest	County Sales Tax	\$903,375	\$31,151,902

Communication: 14.05

This component assesses the availability and quality of communication infrastructure, such as broadband internet access, which is crucial for businesses and residents to stay connected and resilient during disruptions. Tyrrell County's performance on this dimension is weak when compared to other North Carolina counties, ranking 97th in the state.

Notable variables for Tyrrell County within this dimension include:

VARIABLE STRENGTH	FACTOR	TYRRELL COUNTY VALUE	NC COUNTY AVERAGE VALUE
Strongest	Percentage of Population without Smartphones	18.21%	17.22%
Bottom 10 in NC, 2nd Strongest	In-Vehicle High-Speed Mobile Data Availability	0.06	0.37
Bottom 10 in NC	Local High-Speed Mobile Data Availability	0.19	0.66
Bottom 10 in NC, Weakest	Broadband Availability	0.24	0.6

Housing & Transportation: 1

This component evaluates the accessibility and affordability of housing, as well as the availability of reliable transportation options, which are essential for a resilient workforce and economy. Tyrrell County's performance on this dimension is weak when compared to other North Carolina counties, ranking 100th in the state.

Notable variables for Tyrrell County within this dimension include:

VARIABLE STRENGTH	FACTOR	TYRRELL COUNTY VALUE	NC COUNTY AVERAGE VALUE
Strongest	Percentage of People Driving Alone to Work	84.77%	86.36%
2nd Strongest	Percentage of Households with More Residents than Rooms	1.33%	2.1%
Bottom 10 in NC	Percentage of People with Commute Times Over 45 Minutes	31.48%	16.69%
Bottom 10 in NC, Weakest	Ratio of Average Estimated Home Value to Median Income	104	13.67

Healthcare: 2.55

The healthcare component examines the availability and quality of healthcare facilities, services, and professionals, which are critical for maintaining a healthy and productive workforce. Tyrrell County's performance on this dimension is weak when compared to other North Carolina counties, ranking 98th in the state.

Notable variables for Tyrrell County within this dimension include:

VARIABLE STRENGTH	FACTOR	TYRRELL COUNTY VALUE	NC COUNTY AVERAGE VALUE
Strongest	Opioid Deaths per 100,000 Residents	24.9	38.73
Bottom 10 in NC, 2nd Strongest	Nursing Home Beds per 1,000 Residents of Age 65+	0	27.53
Bottom 10 in NC	Nurses per 10,000 Residents	38.45	262.64
Bottom 10 in NC	Physicians per 10,000 Residents	0	16.05
Bottom 10 in NC, Weakest	Mental Health Professionals per 10,000 Residents	0	6.6

Community Cohesion: 88

This component looks at the strength of social networks, community engagement, and the ability of residents to work together to address challenges and support one another during times of adversity. Tyrrell County's performance on this dimension is strong when compared to other North Carolina counties, ranking 4th in the state.

Notable variables for Tyrrell County within this dimension include:

VARIABLE STRENGTH	FACTOR	TYRRELL COUNTY VALUE	NC COUNTY AVERAGE VALUE
Top 10 in NC, Strongest	Percentage of Inactive Voters	1.44%	11.3%
Top 10 in NC, 2nd Strongest	Nonprofits Organizations per 1,000 Residents	5.77	3.17
Weakest	Violent Crimes per 10,000 Residents	4.76	3.07

Socioeconomics: 21.71

This component considers factors such as income levels, poverty rates, and inequality, which can impact a community's ability to withstand and recover from economic shocks. Tyrrell County's performance on this dimension is weak when compared to other North Carolina counties, ranking 84th in the state.

Notable variables for Tyrrell County within this dimension include:

VARIABLE STRENGTH	FACTOR	TYRRELL COUNTY VALUE	NC COUNTY AVERAGE VALUE
Top 10 in NC, Strongest	Gini Coefficient (Income Inequality)	0.4	0.46
2nd Strongest	Total Percentage of Population Below 150% Poverty Line	25.72%	25.93%
Bottom 10 in NC	Unemployment Rate (Q4)	5.5%	3.9%
Bottom 10 in NC	Population 25+ with at least a Bachelor's Degree	12.23%	24.4%
Bottom 10 in NC, Weakest	Percentage of Population without a High School Diploma	17%	9.05%

Education: 50.85

This component evaluates the quality of educational institutions and the educational attainment levels of the local population, which play a crucial role in developing a skilled and adaptable workforce. Tyrrell County's performance on this dimension is average when compared to other North Carolina counties, ranking 42nd in the state.

Notable variables for Tyrrell County within this dimension include:

VARIABLE STRENGTH	FACTOR	TYRRELL COUNTY VALUE	NC COUNTY AVERAGE VALUE
Top 10 in NC, Strongest	Student to Teacher Ratio	1	14
Top 10 in NC, 2nd Strongest	Dropout Rate	0.35%	1.65%
Bottom 10 in NC, Weakest	Postsecondary Enrollment Percentage	0.75%	25.48%

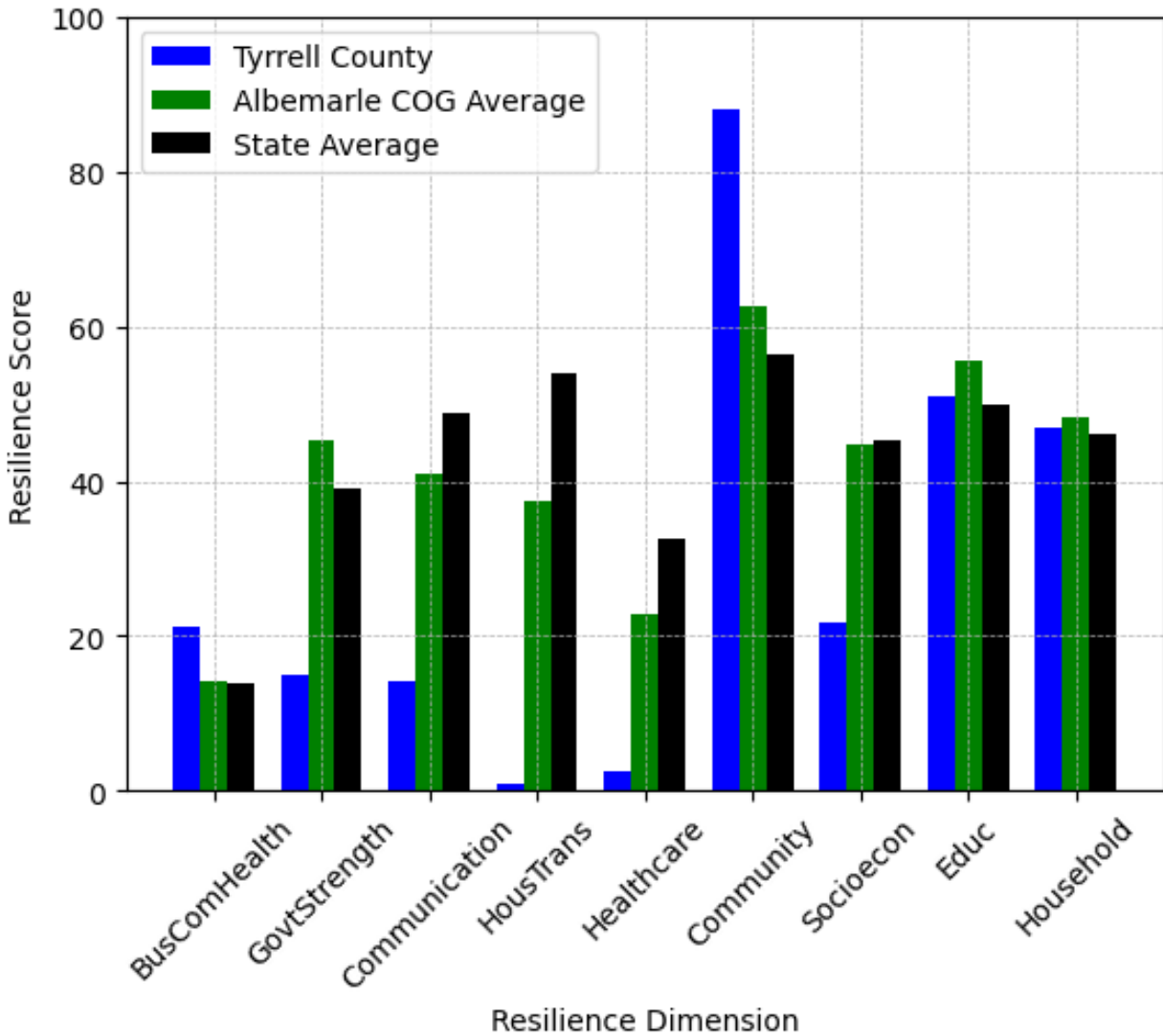
Household Characteristics: 46.99

This component examines factors such as the proportion of single-parent households, age distribution, and the proportion of individuals with disabilities, as these elements can influence a community's resilience and ability to recover from economic disruptions. Tyrrell County's performance on this dimension is average when compared to other North Carolina counties, ranking 44th in the state.

Notable variables for Tyrrell County within this dimension include:

VARIABLE STRENGTH	FACTOR	TYRRELL COUNTY VALUE	NC COUNTY AVERAGE VALUE
Strongest	Percentage of Population 17 and Younger	17.08%	20.37%
2nd Strongest	Percentage of Single Parent Households	28.28%	36.132%
Weakest	Percentage of Population with a Disability	19.897%	16.566%

Tyrrell County's Resilience Dimension Scores Over Time As Compared to the Region and State Averages



Note: Resilience Scores are normalized from 1 to 100 with the most resilient county scoring 100. The Resilience Score is determined based on a county's performance relative to NC's other 99 counties.

Notable Trends in Resilience Indicators, 2017-2022

NOTE: The key trends in the this section are identified based on change rates of at least .15 standard deviations over at least 5 years. Variables are positively oriented such that a positive trend indicates improved performance (e.g., 'improvement' in property crime is a lower crime rate, while 'decline' in property crime indicates a higher crime rate).

Trends in the Business Community Health dimension:

Total Employment Level: **-151** (5-year change rate = **-13.06%**, from 1,159 to 1,008)

→ No change in rank

Average Weekly Wages: **150 dollars** (5-year change rate = **23.01%**, from 652 to 802)

↓ Change in rank from 88 to 94 in NC

Real GDP in Current Dollars: **-27,714 dollars** (5-year change rate = **-21.25%**, from 130,397 to 102,683)

→ No change in rank

Ratio of Available Child Care Slots to Number of Children under Five: **0.27** (5-year change rate = **44.09%**, from 0.62 to 0.89)

↑ Change in rank from 55 to 10 in NC

Trends in the County Government Fiscal Strength dimension:

Adjusted Tax Base: **12,769 dollars** (5-year change rate = **10.27%**, from 124,302 to 137,071)

↓ Change in rank from 22 to 25 in NC

County Sales Tax: **248,928 dollars** (5-year change rate = **38.04%**, from 654,447 to 903,375)

→ No change in rank

Trends in the Housing & Transportation dimension:

Ratio of Average Estimated Home Value to Median Income : **30.51** (5-year change rate = **41.51%**, from 73.49 to 104)

→ No change in rank

Average Available Rent Money less the Average HUD Fair Market Rent: **235.9 dollars** (5-year change rate = **86.89%**, from 271.5 to 507.4)

↑ Change in rank from 96 to 87 in NC

Trends in the Healthcare dimension:

Opioid Deaths per 100,000 Residents: **24.9** (5-year change rate = **N/A**, from 0 to 24.9)

↓ Change in rank from 1 to 22 in NC

Nurses per 10,000 Residents: **9.08** (5-year change rate = **30.92%**, from 29.37 to 38.45)

↑ Change in rank from 100 to 99 in NC

Trends in the Community Cohesion dimension:

Violent Crimes per 10,000 Residents: **3.24** (4-year change rate = **213.2%**, from 1.52 to 4.76)

↓ Change in rank from 26 to 81 in NC

Property Crimes per 10,000 Residents: **3.71** (4-year change rate = **48.77%**, from 7.61 to 11.32)

↓ Change in rank from 10 to 24 in NC

Nonprofits Organizations per 1,000 Residents: **1.02** (5-year change rate = **21.41%**, from 4.75 to 5.77)

↑ Change in rank from 9 to 7 in NC

Trends in the Socioeconomics dimension:

Unemployment Rate (Q4): **-1.9 percent** (5-year change rate = **-25.68%**, from 7.4 to 5.5)

↑ Change in rank from 100 to 95 in NC

Total Percentage of Population Below 150% Poverty Line: **-0.16 percent** (5-year change rate = **-37.79%**, from 0.41 to 0.26)

↑ Change in rank from 97 to 52 in NC

Median Household Income: **16,300 dollars** (5-year change rate = **40.85%**, from 39,900 to 56,200)

↑ Change in rank from 96 to 83 in NC

Trends in the Education dimension:

Graduation Percentage: **-4.1 percent** (5-year change rate = **-4.46%**, from 91.9 to 87.8)

↓ Change in rank from 14 to 56 in NC

Dropout Rate: **-0.79 percent** (5-year change rate = **-69.55%**, from 1.14 to 0.35)

↑ Change in rank from 10 to 9 in NC

Student to Teacher Ratio: **-2** (4-year change rate = **-14.36%**, from 12 to 10)

↑ Change in rank from 3 to 2 in NC

3rd Grade Reading Proficiency: **-6.7 percent** (5-year change rate = **-13.67%**, from 49 to 42.3)

↑ Change in rank from 75 to 57 in NC

Postsecondary Enrollment Percentage: **-0.24 percent** (5-year change rate = **-96.97%**, from 0.25 to 0.01)

↓ Change in rank from 43 to 100 in NC

Data Advisements:

- This county has a population under 20,000 residents according to the US Census Bureau; in low population areas, some variable estimates can be less stable and more sensitive to changes.
- Science, Engineering, & Technology Industries Employment Percentage is not available for 2022 and was excluded from calculating this county's dimension and resilience score.

- Availability of Broadband Services is not available for 2022 and was excluded from calculating this county's dimension and resilience score.
- Adoption Rate of Broadband Services is not available for 2022 and was excluded from calculating this county's dimension and resilience score.