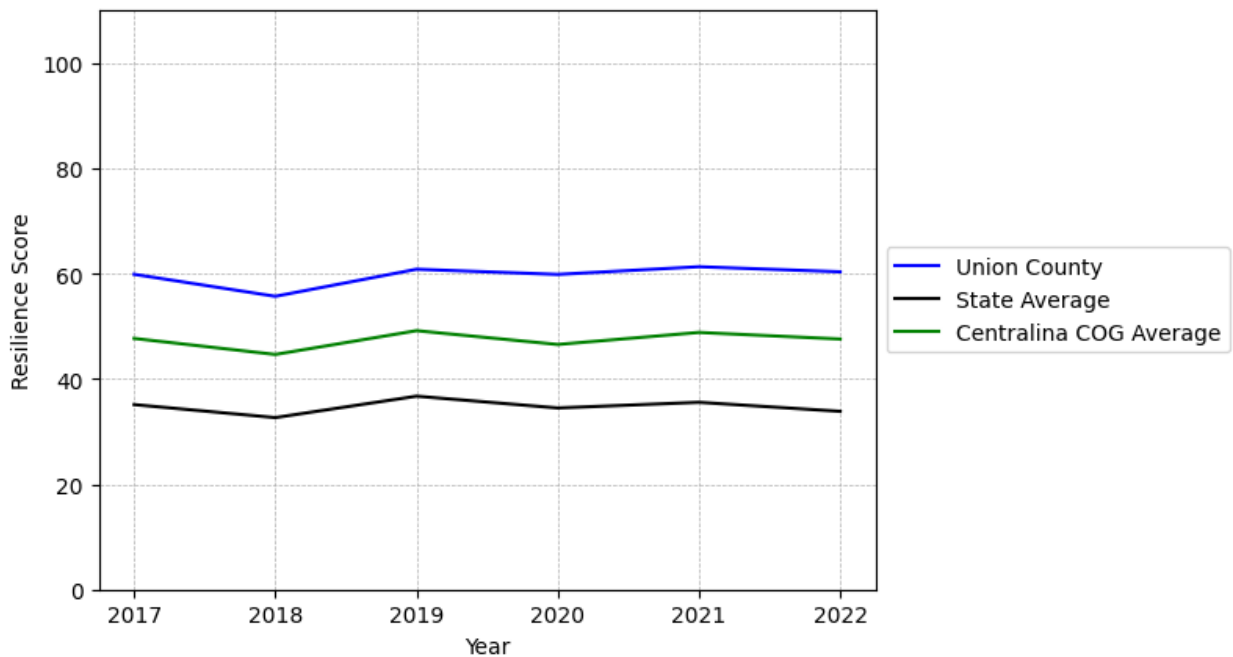


Union County Summary

Resilience Score: 60.34

In 2022, Union County achieved a Resilience Score of 60.34, which is strong as compared to the North Carolina State average.

**Union County's Resilience Score Over Time
As Compared to the Region and State Averages**



Note: Resilience Scores are normalized from 1 to 100 with the most resilient county scoring 100. The Resilience Score is determined based on a county's performance relative to NC's other 99 counties.

Union County's Resilience Score is comprised of 9 distinct dimensions of resilience. Below are Union County's scores for 2022 on those 9 dimensions, and their rank relative to other North Carolina counties.

Business Community Health: 22.81

This component examines the strength and diversity of the local business community, including factors such as the number of businesses, employment levels, and industry diversity. Union County's performance on this dimension is fairly strong when compared to other North Carolina counties, ranking 12th in the state.

Notable variables for Union County within this dimension include:

VARIABLE STRENGTH	FACTOR	UNION COUNTY VALUE	NC COUNTY AVERAGE VALUE
Top 10 in NC, Strongest	Percentage of Companies in Science, Engineering, & Technology Industries	11.59%	6.13%
Top 10 in NC, 2nd Strongest	Average Weekly Wages	\$1,126	\$951
Bottom 10 in NC, Weakest	Private Sector Diversity	0.083	0.28

County Government Fiscal Strength: 33.07

This component looks at the financial health of local governments, including their ability to generate revenue, manage debt, and maintain adequate reserves to weather economic downturns. Union County's performance on this dimension is average when compared to other North Carolina counties, ranking 70th in the state.

Notable variables for Union County within this dimension include:

VARIABLE STRENGTH	FACTOR	UNION COUNTY VALUE	NC COUNTY AVERAGE VALUE
Strongest	County Sales Tax	\$66,891,632	\$31,151,902
2nd Strongest	Dependency Ratio of County Government	0.12	0.16
Bottom 10 in NC, Weakest	Debt Service Ratio of County Government	0.16	0.07

Communication: 80.75

This component assesses the availability and quality of communication infrastructure, such as broadband internet access, which is crucial for businesses and residents to stay connected and resilient during disruptions. Union County's performance on this dimension is strong when compared to other North Carolina counties, ranking 8th in the state.

Notable variables for Union County within this dimension include:

VARIABLE STRENGTH	FACTOR	UNION COUNTY VALUE	NC COUNTY AVERAGE VALUE
Top 10 in NC, Strongest	Percentage of Population without Smartphones	8.49%	17.22%
2nd Strongest	In-Vehicle High-Speed Mobile Data Availability	0.67	0.37
Weakest	Broadband Availability	0.69	0.6

Housing & Transportation: 96.09

This component evaluates the accessibility and affordability of housing, as well as the availability of reliable transportation options, which are essential for a resilient workforce and economy. Union County's performance on this dimension is strong when compared to other North Carolina counties, ranking 4th in the state.

Notable variables for Union County within this dimension include:

VARIABLE STRENGTH	FACTOR	UNION COUNTY VALUE	NC COUNTY AVERAGE VALUE
Top 10 in NC, Strongest	Percentage of Owner-Occupied Homes	78.13%	57.87%
Top 10 in NC, 2nd Strongest	Percentage of Homes Built Before 1980	19.92%	40.9%
Top 10 in NC	Percentage of Population without Vehicles	2.75%	5.75%
Top 10 in NC	Average Available Rent Money less the Average HUD Fair Market Rent	\$1,086.7	\$799.87
Weakest	Percentage of People with Commute Times Over 45 Minutes	22.32%	16.69%

Healthcare: 27.84

The healthcare component examines the availability and quality of healthcare facilities, services, and professionals, which are critical for maintaining a healthy and productive workforce. Union County's performance on this dimension is average when compared to other North Carolina counties, ranking 44th in the state.

Notable variables for Union County within this dimension include:

VARIABLE	FACTOR	UNION COUNTY	NC COUNTY
----------	--------	--------------	-----------

STRENGTH		VALUE	AVERAGE VALUE
Top 10 in NC, Strongest	Opioid Deaths per 100,000 Residents	18.3	38.73
2nd Strongest	Mental Health Professionals per 10,000 Residents	6.64	6.6
Weakest	Nursing Home Beds per 1,000 Residents of Age 65+	19.7	27.53

Community Cohesion: 69.54

This component looks at the strength of social networks, community engagement, and the ability of residents to work together to address challenges and support one another during times of adversity. Union County's performance on this dimension is fairly strong when compared to other North Carolina counties, ranking 22nd in the state.

Notable variables for Union County within this dimension include:

VARIABLE STRENGTH	FACTOR	UNION COUNTY VALUE	NC COUNTY AVERAGE VALUE
Strongest	Yearly Population Change Percentage	2.39%	0.906%
2nd Strongest	Violent Crimes per 10,000 Residents	2.01	3.07
Weakest	Percentage of Inactive Voters	10.67%	11.3%

Socioeconomics: 92.39

This component considers factors such as income levels, poverty rates, and inequality, which can impact a community's ability to withstand and recover from economic shocks. Union County's performance on this dimension is strong when compared to other North Carolina counties, ranking 2nd in the state.

Notable variables for Union County within this dimension include:

VARIABLE STRENGTH	FACTOR	UNION COUNTY VALUE	NC COUNTY AVERAGE VALUE
Top 10 in NC, Strongest	Total Percentage of Population Below 150% Poverty Line	12.76%	25.93%
Top 10 in NC, 2nd Strongest	Percentage of Households Spending more than 30%	17.9%	24.53%

Top 10 in NC	Income on Housing Median Household Income	\$96,3	\$70,088
Top 10 in NC	Percentage of Households with Income over \$200k	17.23%	5.28%
Top 10 in NC	Unemployment Rate (Q4)	3.1%	3.9%
Weakest	Gini Coefficient (Income Inequality)	0.45	0.46

Education: 53.42

This component evaluates the quality of educational institutions and the educational attainment levels of the local population, which play a crucial role in developing a skilled and adaptable workforce. Union County's performance on this dimension is average when compared to other North Carolina counties, ranking 37th in the state.

Notable variables for Union County within this dimension include:

VARIABLE STRENGTH	FACTOR	UNION COUNTY VALUE	NC COUNTY AVERAGE VALUE
Top 10 in NC, Strongest	3rd Grade Reading Proficiency	57.2%	43.1%
Top 10 in NC, 2nd Strongest	Graduation Percentage	93.4%	88.03%
Bottom 10 in NC, Weakest	Student to Teacher Ratio	17	14

Household Characteristics: 62.7

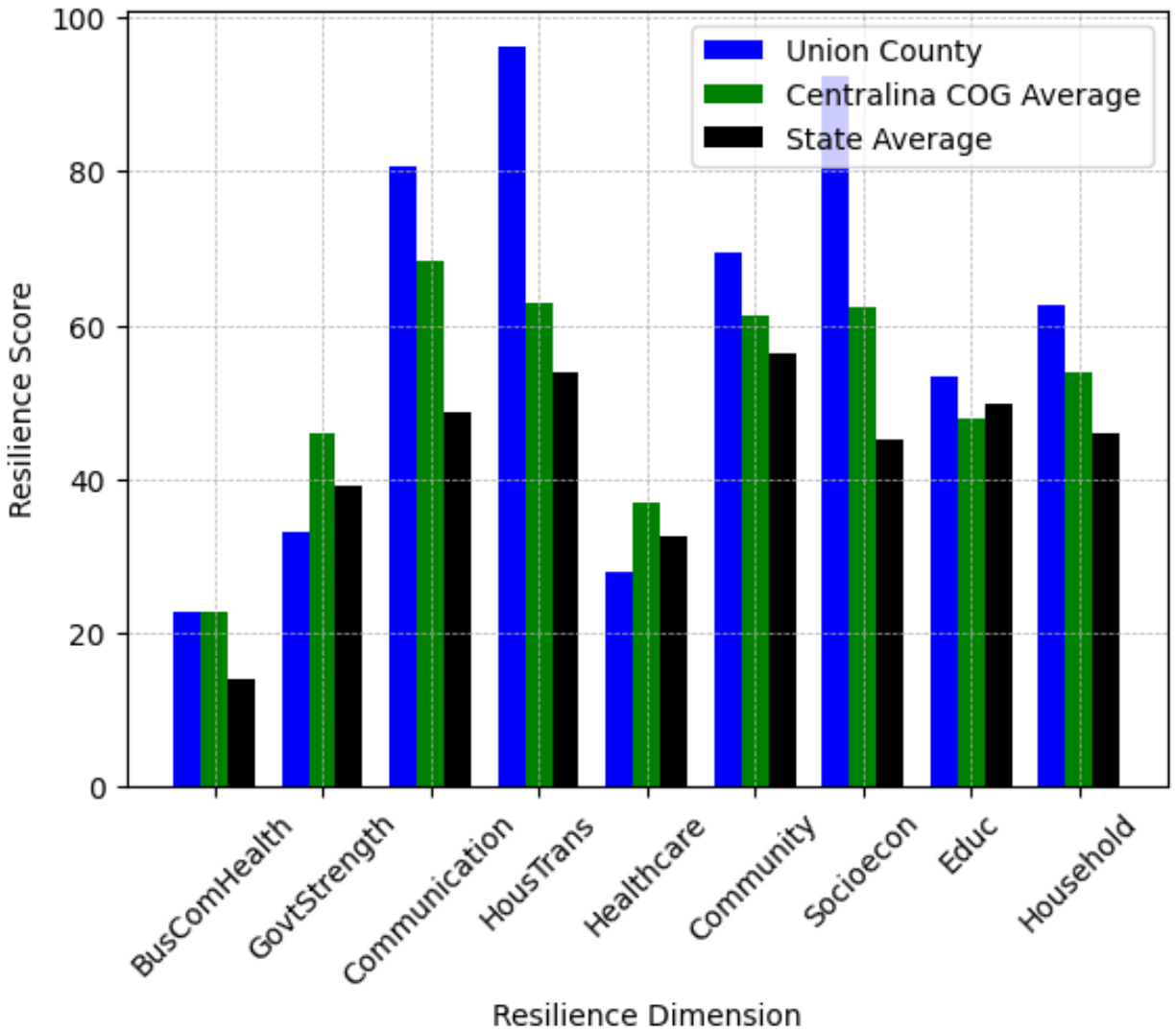
This component examines factors such as the proportion of single-parent households, age distribution, and the proportion of individuals with disabilities, as these elements can influence a community's resilience and ability to recover from economic disruptions. Union County's performance on this dimension is strong when compared to other North Carolina counties, ranking 8th in the state.

Notable variables for Union County within this dimension include:

VARIABLE STRENGTH	FACTOR	UNION COUNTY VALUE	NC COUNTY AVERAGE VALUE
Top 10 in NC, Strongest	Percentage of Single Parent Households	18.305%	36.132%
Top 10 in NC, 2nd Strongest	Percentage of Population with a Disability	9.241%	16.566%
Top 10 in NC	Percentage of Population	13.09%	20.53%

Bottom 10 in NC, Weakest	65 and Older		
	Percentage of Population 17 and Younger	26.02%	20.37%

Union County's Resilience Dimension Scores Over Time As Compared to the Region and State Averages



Note: Resilience Scores are normalized from 1 to 100 with the most resilient county scoring 100. The Resilience Score is determined based on a county's performance relative to NC's other 99 counties.

Notable Trends in Resilience Indicators, 2017-2022

NOTE: The key trends in the this section are identified based on change rates of at least .15 standard deviations over at least 5 years. Variables are positively oriented such that a positive trend indicates improved performance (e.g., 'improvement' in property crime is a lower crime rate, while 'decline' in property crime indicates a higher crime rate).

Trends in the Business Community Health dimension:

Total Employment Level: **5,931** (5-year change rate = **9.25%**, from 64,135 to 70,066)

→ No change in rank

Average Weekly Wages: **244 dollars** (5-year change rate = **27.66%**, from 882 to 1,126)

↓ Change in rank from 8 to 9 in NC

Real GDP in Current Dollars: **1,005,025 dollars** (5-year change rate = **13.25%**, from 7,586,600 to 8,591,625)

→ No change in rank

Trends in the County Government Fiscal Strength dimension:

Adjusted Tax Base: **32,661 dollars** (5-year change rate = **32.84%**, from 99,469 to 132,130)

↑ Change in rank from 44 to 33 in NC

County Sales Tax: **24,711,596 dollars** (5-year change rate = **58.59%**, from 42,180,036 to 66,891,632)

↓ Change in rank from 10 to 11 in NC

Trends in the Housing & Transportation dimension:

Ratio of Average Estimated Home Value to Median Income : **1.27** (5-year change rate = **43.63%**, from 2.92 to 4.19)

↓ Change in rank from 22 to 24 in NC

Average Available Rent Money less the Average HUD Fair Market Rent: **356 dollars** (5-year change rate = **48.72%**, from 730.7 to 1,086.7)

↑ Change in rank from 10 to 9 in NC

Trends in the Healthcare dimension:

Opioid Deaths per 100,000 Residents: **3.2** (5-year change rate = **21.19%**, from 15.1 to 18.3)

↑ Change in rank from 21 to 8 in NC

Nurses per 10,000 Residents: **-41.56** (5-year change rate = **-16.89%**, from 246.13 to 204.57)

↓ Change in rank from 32 to 40 in NC

Physicians per 10,000 Residents: **1.23** (5-year change rate = **13.61%**, from 9.04 to 10.27)

↑ Change in rank from 66 to 58 in NC

Mental Health Professionals per 10,000 Residents: **1.16** (5-year change rate = **21.17%**, from 5.48 to 6.64)

↑ Change in rank from 47 to 38 in NC

Trends in the Community Cohesion dimension:

Property Crimes per 10,000 Residents: **-6.21** (4-year change rate = **-31.76%**, from 19.54 to 13.34)

↑ Change in rank from 54 to 41 in NC

Nonprofits Organizations per 1,000 Residents: **0.89** (5-year change rate = **33.23%**, from 2.69 to 3.59)

↑ Change in rank from 54 to 38 in NC

Trends in the Socioeconomics dimension:

Unemployment Rate (Q4): **-0.6 percent** (5-year change rate = **-17.12%**, from 3.7 to 3.1)

↑ Change in rank from 12 to 8 in NC

Median Household Income: **25,600 dollars** (5-year change rate = **36.21%**, from 70,700 to 96,300)

↑ Change in rank from 10 to 5 in NC

Trends in the Education dimension:

Dropout Rate: **-0.72 percent** (5-year change rate = **-52.74%**, from 1.37 to 0.65)

→ No change in rank

3rd Grade Reading Proficiency: **-10.3 percent** (5-year change rate = **-15.26%**, from 67.5 to 57.2)

↓ Change in rank from 4 to 6 in NC

Data Advisements:

- Availability of Broadband Services is not available for 2022 and was excluded from calculating this county's dimension and resilience score.
- Adoption Rate of Broadband Services is not available for 2022 and was excluded from calculating this county's dimension and resilience score.