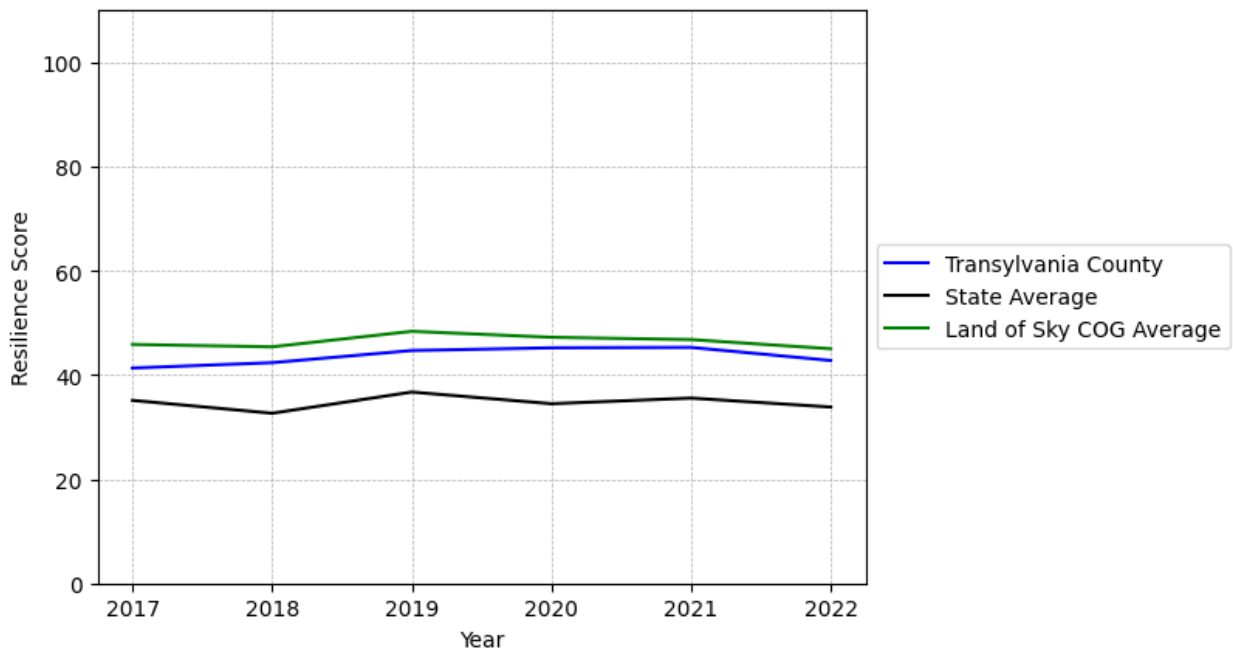


Transylvania County Summary

Resilience Score: 42.77

In 2022, Transylvania County achieved a Resilience Score of 42.77, which is average as compared to the North Carolina State average.

**Transylvania County's Resilience Score Over Time
As Compared to the Region and State Averages**



Note: Resilience Scores are normalized from 1 to 100 with the most resilient county scoring 100. The Resilience Score is determined based on a county's performance relative to NC's other 99 counties.

Transylvania County's Resilience Score is comprised of 9 distinct dimensions of resilience. Below are Transylvania County's scores for 2022 on those 9 dimensions, and their rank relative to other North Carolina counties.

Business Community Health: 8.68

This component examines the strength and diversity of the local business community, including factors such as the number of businesses, employment levels, and industry diversity. Transylvania County's performance on this dimension is average when compared to other North Carolina counties, ranking 69th in the state.

Notable variables for Transylvania County within this dimension include:

VARIABLE STRENGTH	FACTOR	TRANSYLVANIA COUNTY VALUE	NC COUNTY AVERAGE VALUE
Strongest	Percentage of Companies in Science, Engineering, & Technology Industries	8.12%	6.13%
2nd Strongest	Science, Engineering, & Technology Industries Employment Percentage	1.37%	1.79%
Bottom 10 in NC, Weakest	Ratio of Available Child Care Slots to Number of Children under Five	0.35	0.59

County Government Fiscal Strength: 65.27

This component looks at the financial health of local governments, including their ability to generate revenue, manage debt, and maintain adequate reserves to weather economic downturns. Transylvania County's performance on this dimension is strong when compared to other North Carolina counties, ranking 13th in the state.

Notable variables for Transylvania County within this dimension include:

VARIABLE STRENGTH	FACTOR	TRANSYLVANIA COUNTY VALUE	NC COUNTY AVERAGE VALUE
Top 10 in NC, Strongest	Debt Service Ratio of County Government	0.01	0.07
Top 10 in NC, 2nd Strongest	Adjusted Tax Base	\$191,697	\$124,092
Weakest	Solvency Ratio of County Government	36.08	46.7

Communication: 32.82

This component assesses the availability and quality of communication infrastructure, such as broadband internet access, which is crucial for businesses and residents to stay connected and

resilient during disruptions. Transylvania County's performance on this dimension is fairly weak when compared to other North Carolina counties, ranking 86th in the state.

Notable variables for Transylvania County within this dimension include:

VARIABLE STRENGTH	FACTOR	TRANSYLVANIA COUNTY VALUE	NC COUNTY AVERAGE VALUE
Strongest	Broadband Availability	0.57	0.6
2nd Strongest	Percentage of Population without Smartphones	19.6%	17.22%
Weakest	In-Vehicle High-Speed Mobile Data Availability	0.16	0.37

Housing & Transportation: 58.86

This component evaluates the accessibility and affordability of housing, as well as the availability of reliable transportation options, which are essential for a resilient workforce and economy.

Transylvania County's performance on this dimension is average when compared to other North Carolina counties, ranking 50th in the state.

Notable variables for Transylvania County within this dimension include:

VARIABLE STRENGTH	FACTOR	TRANSYLVANIA COUNTY VALUE	NC COUNTY AVERAGE VALUE
Strongest	Percentage of People with Commute Times Over 45 Minutes	10.75%	16.69%
2nd Strongest	Percentage of Population without Vehicles	4.56%	5.75%
Weakest	Ratio of Average Estimated Home Value to Median Income	20.8	13.67

Healthcare: 30.21

The healthcare component examines the availability and quality of healthcare facilities, services, and professionals, which are critical for maintaining a healthy and productive workforce.

Transylvania County's performance on this dimension is average when compared to other North Carolina counties, ranking 37th in the state.

Notable variables for Transylvania County within this dimension include:

VARIABLE	FACTOR	TRANSYLVANIA	NC COUNTY
----------	--------	--------------	-----------

STRENGTH		COUNTY VALUE	AVERAGE VALUE
Top 10 in NC, Strongest	Opioid Deaths per 100,000 Residents	14.5	38.73
2nd Strongest	Physicians per 10,000 Residents	15.52	16.05
Weakest	Nurses per 10,000 Residents	84.54	262.64

Community Cohesion: 74.8

This component looks at the strength of social networks, community engagement, and the ability of residents to work together to address challenges and support one another during times of adversity. Transylvania County's performance on this dimension is strong when compared to other North Carolina counties, ranking 13th in the state.

Notable variables for Transylvania County within this dimension include:

VARIABLE STRENGTH	FACTOR	TRANSYLVANIA COUNTY VALUE	NC COUNTY AVERAGE VALUE
Top 10 in NC, Strongest	Nonprofits Organizations per 1,000 Residents	6.19	3.17
2nd Strongest	Violent Crimes per 10,000 Residents	1.15	3.07
Weakest	Yearly Population Change Percentage	0.28%	0.906%

Socioeconomics: 60.09

This component considers factors such as income levels, poverty rates, and inequality, which can impact a community's ability to withstand and recover from economic shocks. Transylvania County's performance on this dimension is fairly strong when compared to other North Carolina counties, ranking 24th in the state.

Notable variables for Transylvania County within this dimension include:

VARIABLE STRENGTH	FACTOR	TRANSYLVANIA COUNTY VALUE	NC COUNTY AVERAGE VALUE
Top 10 in NC, Strongest	Percentage of Population without a High School Diploma	4.8%	9.05%
2nd Strongest	Population 25+ with at least a Bachelor's Degree	37.07%	24.4%
Weakest	Percentage of Population without Health Insurance	13.58%	11.23%

Education: 63.04

This component evaluates the quality of educational institutions and the educational attainment levels of the local population, which play a crucial role in developing a skilled and adaptable workforce. Transylvania County's performance on this dimension is fairly strong when compared to other North Carolina counties, ranking 14th in the state.

Notable variables for Transylvania County within this dimension include:

VARIABLE STRENGTH	FACTOR	TRANSYLVANIA COUNTY VALUE	NC COUNTY AVERAGE VALUE
Strongest	Student to Teacher Ratio	12	14
2nd Strongest	Local LEA Financial Resources (per ADM)	\$15,86	\$8,683
Weakest	Postsecondary Enrollment Percentage	16.96%	25.48%

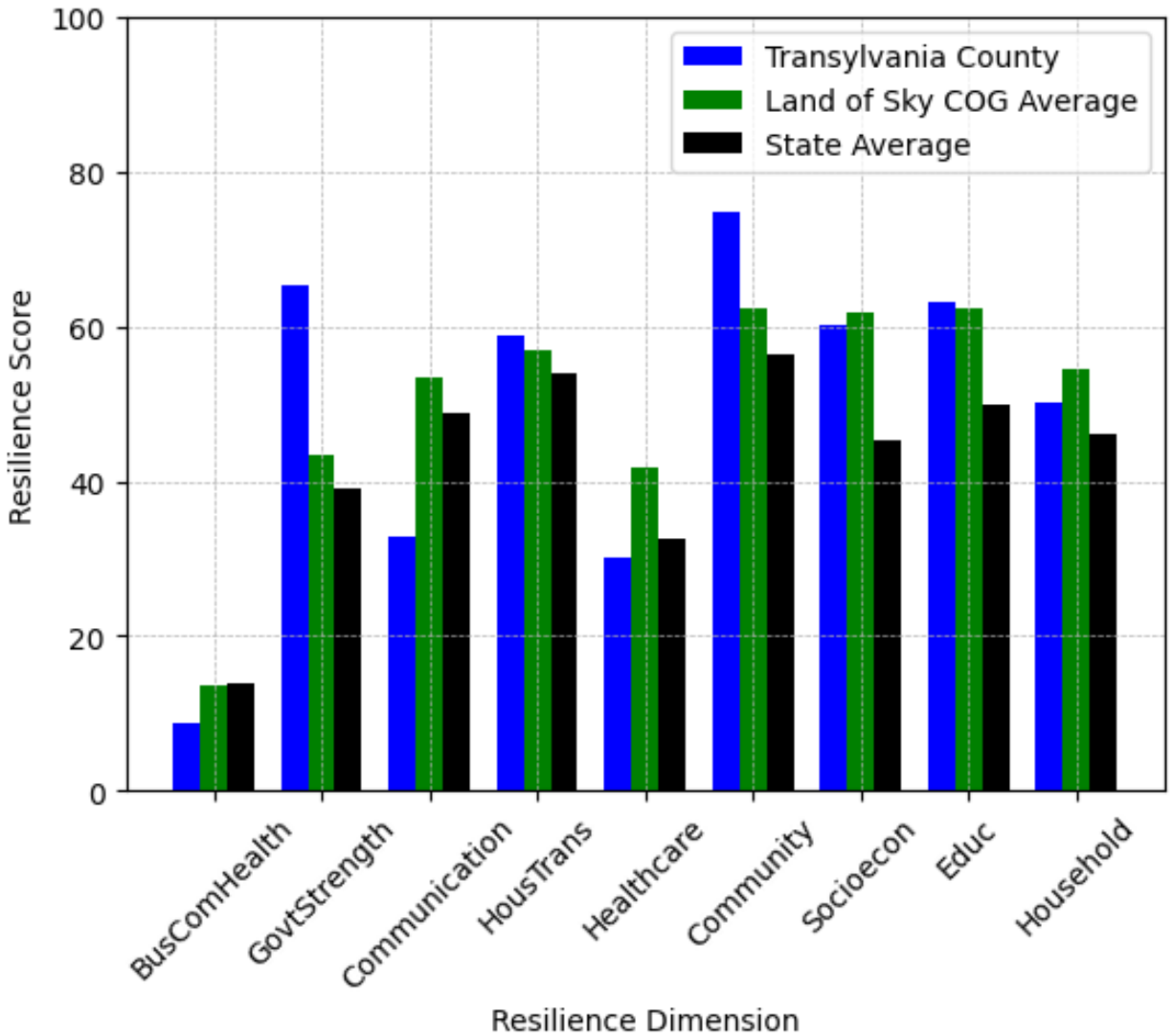
Household Characteristics: 50.07

This component examines factors such as the proportion of single-parent households, age distribution, and the proportion of individuals with disabilities, as these elements can influence a community's resilience and ability to recover from economic disruptions. Transylvania County's performance on this dimension is average when compared to other North Carolina counties, ranking 29th in the state.

Notable variables for Transylvania County within this dimension include:

VARIABLE STRENGTH	FACTOR	TRANSYLVANIA COUNTY VALUE	NC COUNTY AVERAGE VALUE
Top 10 in NC, Strongest	Percentage of Population 17 and Younger	15.47%	20.37%
2nd Strongest	Percentage of Population with Limited English Proficiency	0.58%	1.454%
Bottom 10 in NC, Weakest	Percentage of Population 65 and Older	31.01%	20.53%

Transylvania County's Resilience Dimension Scores Over Time As Compared to the Region and State Averages



Note: Resilience Scores are normalized from 1 to 100 with the most resilient county scoring 100. The Resilience Score is determined based on a county's performance relative to NC's other 99 counties.

Notable Trends in Resilience Indicators, 2017-2022

NOTE: The key trends in the this section are identified based on change rates of at least .15 standard deviations over at least 5 years. Variables are positively oriented such that a positive trend indicates improved performance (e.g., 'improvement' in property crime is a lower crime rate, while 'decline' in property crime indicates a higher crime rate).

Trends in the Business Community Health dimension:

Total Employment Level: **452** (5-year change rate = **5.09%**, from 8,870 to 9,322)

↑ Change in rank from 71 to 69 in NC

Average Weekly Wages: **230 dollars** (5-year change rate = **32.53%**, from 707 to 937)

↑ Change in rank from 58 to 42 in NC

Real GDP in Current Dollars: **339,154 dollars** (5-year change rate = **23.28%**, from 1,456,602 to 1,795,756)

↑ Change in rank from 62 to 52 in NC

Trends in the County Government Fiscal Strength dimension:

Adjusted Tax Base: **15,549 dollars** (5-year change rate = **8.83%**, from 176,148 to 191,697)

→ No change in rank

County Sales Tax: **4,823,232 dollars** (5-year change rate = **64.68%**, from 7,457,622 to 12,280,855)

↑ Change in rank from 63 to 59 in NC

Trends in the Housing & Transportation dimension:

Ratio of Average Estimated Home Value to Median Income : **6.5** (5-year change rate = **45.4%**, from 14.31 to 20.8)

↓ Change in rank from 80 to 81 in NC

Average Available Rent Money less the Average HUD Fair Market Rent: **130.3 dollars** (5-year change rate = **21.35%**, from 610.3 to 740.6)

↓ Change in rank from 27 to 57 in NC

Trends in the Healthcare dimension:

Opioid Deaths per 100,000 Residents: **-9.1** (5-year change rate = **-38.56%**, from 23.6 to 14.5)

↑ Change in rank from 52 to 3 in NC

Nurses per 10,000 Residents: **-27.93** (5-year change rate = **-24.83%**, from 112.47 to 84.54)

↓ Change in rank from 71 to 83 in NC

Physicians per 10,000 Residents: **-1.47** (5-year change rate = **-8.65%**, from 16.99 to 15.52)

↓ Change in rank from 36 to 40 in NC

Mental Health Professionals per 10,000 Residents: **-0.71** (5-year change rate = **-10.19%**, from 6.97 to 6.26)

↓ Change in rank from 27 to 43 in NC

Trends in the Community Cohesion dimension:

Violent Crimes per 10,000 Residents: **-0.32** (4-year change rate = **-21.82%**, from 1.48 to 1.15)

↑ Change in rank from 23 to 14 in NC

Property Crimes per 10,000 Residents: **-2.46** (4-year change rate = **-21.12%**, from 11.63 to 9.17)

↑ Change in rank from 17 to 15 in NC

Nonprofits Organizations per 1,000 Residents: **0.63** (5-year change rate = **11.31%**, from 5.57 to 6.19)

↑ Change in rank from 5 to 4 in NC

Trends in the Socioeconomics dimension:

Unemployment Rate (Q4): **-0.6 percent** (5-year change rate = **-14.88%**, from 4 to 3.4)

↑ Change in rank from 37 to 35 in NC

Median Household Income: **14,700 dollars** (5-year change rate = **27.27%**, from 53,900 to 68,600)

↓ Change in rank from 42 to 50 in NC

Trends in the Education dimension:

Dropout Rate: **0.32 percent** (5-year change rate = **46.29%**, from 0.7 to 1.02)

↓ Change in rank from 4 to 25 in NC

Student to Teacher Ratio: **-1** (4-year change rate = **-5.03%**, from 13 to 12)

↓ Change in rank from 10 to 12 in NC

3rd Grade Reading Proficiency: **-14.3 percent** (5-year change rate = **-22.41%**, from 63.8 to 49.5)

↓ Change in rank from 12 to 30 in NC

Data Advisements:

- Availability of Broadband Services is not available for 2022 and was excluded from calculating this county's dimension and resilience score.
- Adoption Rate of Broadband Services is not available for 2022 and was excluded from calculating this county's dimension and resilience score.