

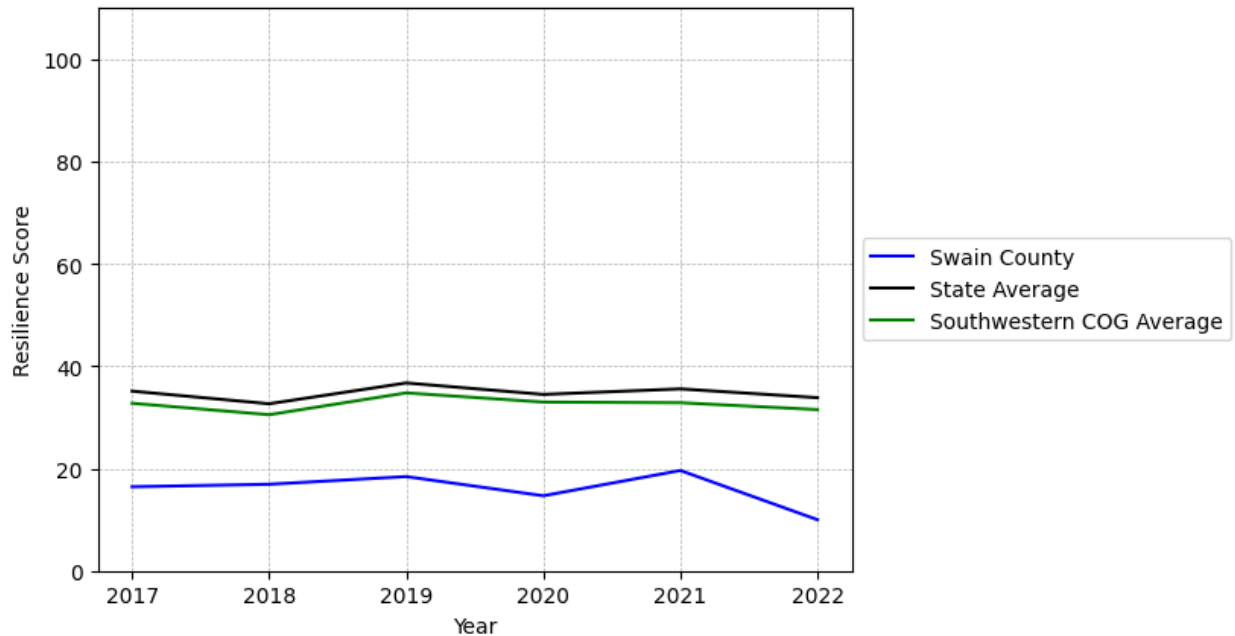
# Swain County Summary

---

## Resilience Score: 9.99

In 2022, Swain County achieved a Resilience Score of 9.99, which is weak as compared to the North Carolina State average.

**Swain County's Resilience Score Over Time  
As Compared to the Region and State Averages**



*Note: Resilience Scores are normalized from 1 to 100 with the most resilient county scoring 100. The Resilience Score is determined based on a county's performance relative to NC's other 99 counties.*

Swain County's Resilience Score is comprised of 9 distinct dimensions of resilience. Below are Swain County's scores for 2022 on those 9 dimensions, and their rank relative to other North Carolina counties.

### **Business Community Health: 12.51**

This component examines the strength and diversity of the local business community, including factors such as the number of businesses, employment levels, and industry diversity. Swain County's performance on this dimension is average when compared to other North Carolina counties, ranking 43rd in the state.

Notable variables for Swain County within this dimension include:

<b>VARIABLE STRENGTH</b>	<b>FACTOR</b>	<b>SWAIN COUNTY VALUE</b>	<b>NC COUNTY AVERAGE VALUE</b>
<b>Strongest</b>	Ratio of Available Child Care Slots to Number of Children under Five	0.71	0.59
<b>2nd Strongest</b>	Private Sector Diversity	0.347	0.28
<b>Weakest</b>	Science, Engineering, & Technology Industries Employment Percentage	0.24%	1.79%

---

### **County Government Fiscal Strength: 9.9**

This component looks at the financial health of local governments, including their ability to generate revenue, manage debt, and maintain adequate reserves to weather economic downturns. Swain County's performance on this dimension is weak when compared to other North Carolina counties, ranking 93rd in the state.

Notable variables for Swain County within this dimension include:

<b>VARIABLE STRENGTH</b>	<b>FACTOR</b>	<b>SWAIN COUNTY VALUE</b>	<b>NC COUNTY AVERAGE VALUE</b>
<b>Strongest</b>	Adjusted Tax Base	\$127,214	\$124,092
<b>2nd Strongest</b>	Solvency Ratio of County Government	40.47	46.7
<b>Bottom 10 in NC</b>	Dependency Ratio of County Government	0.26	0.16
<b>Bottom 10 in NC, Weakest</b>	Operations Ratio of County Government	0.98	1.11

---

### **Communication: 14.91**

This component assesses the availability and quality of communication infrastructure, such as broadband internet access, which is crucial for businesses and residents to stay connected and resilient during disruptions. Swain County's performance on this dimension is weak when compared to other North Carolina counties, ranking 96th in the state.

Notable variables for Swain County within this dimension include:

VARIABLE STRENGTH	FACTOR	SWAIN COUNTY VALUE	NC COUNTY AVERAGE VALUE
<b>Strongest</b>	Percentage of Population without Smartphones	21.31%	17.22%
<b>Bottom 10 in NC, 2nd Strongest</b>	Local High-Speed Mobile Data Availability	0.29	0.66
<b>Bottom 10 in NC</b>	In-Vehicle High-Speed Mobile Data Availability	0.1	0.37
<b>Bottom 10 in NC, Weakest</b>	Broadband Availability	0.25	0.6

### **Housing & Transportation: 25.42**

This component evaluates the accessibility and affordability of housing, as well as the availability of reliable transportation options, which are essential for a resilient workforce and economy. Swain County's performance on this dimension is weak when compared to other North Carolina counties, ranking 97th in the state.

Notable variables for Swain County within this dimension include:

VARIABLE STRENGTH	FACTOR	SWAIN COUNTY VALUE	NC COUNTY AVERAGE VALUE
<b>Strongest</b>	Percentage of People with Commute Times Over 45 Minutes	10.12%	16.69%
<b>2nd Strongest</b>	Percentage of Homes Built Before 1980	38.81%	40.9%
<b>Bottom 10 in NC, Weakest</b>	Percentage of Households with More Residents than Rooms	4.7%	2.1%

### **Healthcare: 16.85**

The healthcare component examines the availability and quality of healthcare facilities, services, and professionals, which are critical for maintaining a healthy and productive workforce. Swain County's performance on this dimension is fairly weak when compared to other North Carolina counties, ranking 85th in the state.

Notable variables for Swain County within this dimension include:

VARIABLE STRENGTH	FACTOR	SWAIN COUNTY VALUE	NC COUNTY AVERAGE VALUE
-------------------	--------	--------------------	-------------------------

<b>Top 10 in NC, Strongest</b>	Nursing Home Beds per 1,000 Residents of Age 65+	42.49	27.53
<b>2nd Strongest</b>	Mental Health Professionals per 10,000 Residents	6.98	6.6
<b>Bottom 10 in NC, Weakest</b>	Opioid Deaths per 100,000 Residents	98.1	38.73

### Community Cohesion: 48.55

This component looks at the strength of social networks, community engagement, and the ability of residents to work together to address challenges and support one another during times of adversity. Swain County's performance on this dimension is average when compared to other North Carolina counties, ranking 75th in the state.

Notable variables for Swain County within this dimension include:

VARIABLE STRENGTH	FACTOR	SWAIN COUNTY VALUE	NC COUNTY AVERAGE VALUE
<b>Strongest</b>	Nonprofits Organizations per 1,000 Residents	4.6	3.17
<b>2nd Strongest</b>	Property Crimes per 10,000 Residents	12.24	15.74
<b>Bottom 10 in NC, Weakest</b>	Yearly Population Change Percentage	-1.096%	0.906%

### Socioeconomics: 28.21

This component considers factors such as income levels, poverty rates, and inequality, which can impact a community's ability to withstand and recover from economic shocks. Swain County's performance on this dimension is fairly weak when compared to other North Carolina counties, ranking 78th in the state.

Notable variables for Swain County within this dimension include:

VARIABLE STRENGTH	FACTOR	SWAIN COUNTY VALUE	NC COUNTY AVERAGE VALUE
<b>Top 10 in NC, Strongest</b>	Unemployment Rate (Q4)	3%	3.9%
<b>Top 10 in NC, 2nd Strongest</b>	Percentage of Households Spending more than 30% Income on Housing	18.44%	24.53%
<b>Bottom 10 in NC, Weakest</b>	Percentage of Population without Health Insurance	23.99%	11.23%

---

**Education: 32.39**

This component evaluates the quality of educational institutions and the educational attainment levels of the local population, which play a crucial role in developing a skilled and adaptable workforce. Swain County's performance on this dimension is fairly weak when compared to other North Carolina counties, ranking 76th in the state.

Notable variables for Swain County within this dimension include:

<b>VARIABLE STRENGTH</b>	<b>FACTOR</b>	<b>SWAIN COUNTY VALUE</b>	<b>NC COUNTY AVERAGE VALUE</b>
<b>Strongest</b>	Student to Teacher Ratio	14	14
<b>2nd Strongest</b>	3rd Grade Reading Proficiency	47.6%	43.1%
<b>Bottom 10 in NC, Weakest</b>	Graduation Percentage	78.2%	88.03%

---

**Household Characteristics: 40.35**

This component examines factors such as the proportion of single-parent households, age distribution, and the proportion of individuals with disabilities, as these elements can influence a community's resilience and ability to recover from economic disruptions. Swain County's performance on this dimension is average when compared to other North Carolina counties, ranking 70th in the state.

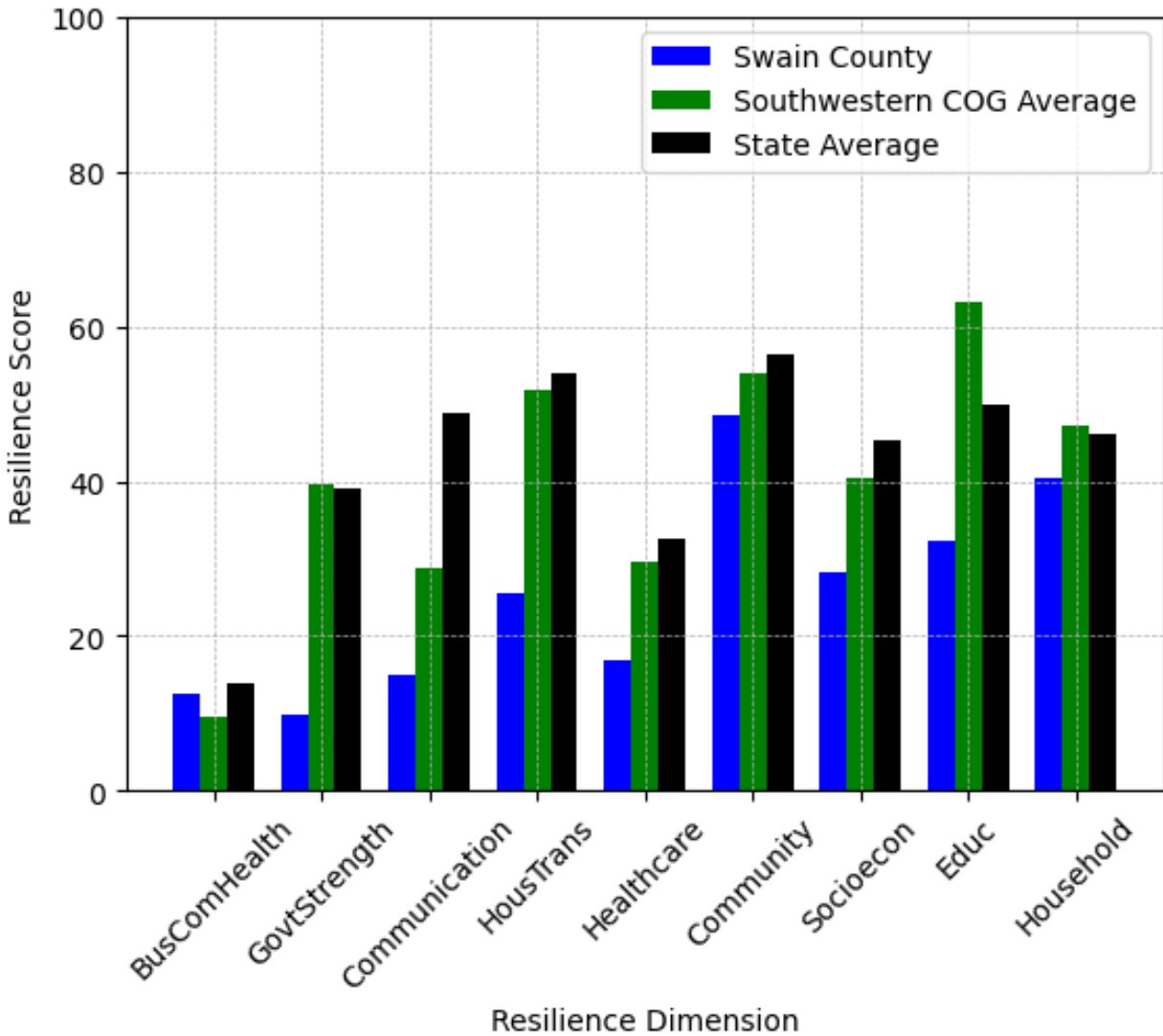
Notable variables for Swain County within this dimension include:

<b>VARIABLE STRENGTH</b>	<b>FACTOR</b>	<b>SWAIN COUNTY VALUE</b>	<b>NC COUNTY AVERAGE VALUE</b>
<b>Strongest</b>	Percentage of Population with Limited English Proficiency	0.439%	1.454%
<b>2nd Strongest</b>	Percentage of Population 65 and Older	19.15%	20.53%
<b>Weakest</b>	Percentage of Population 17 and Younger	22.62%	20.37%

---



## Swain County's Resilience Dimension Scores Over Time As Compared to the Region and State Averages



*Note: Resilience Scores are normalized from 1 to 100 with the most resilient county scoring 100. The Resilience Score is determined based on a county's performance relative to NC's other 99 counties.*

## **Notable Trends in Resilience Indicators, 2017-2022**

*NOTE: The key trends in the this section are identified based on change rates of at least .15 standard deviations over at least 5 years. Variables are positively oriented such that a positive trend indicates improved performance (e.g., 'improvement' in property crime is a lower crime rate, while 'decline' in property crime indicates a higher crime rate).*

### **Trends in the Business Community Health dimension:**

Total Employment Level: **975** (5-year change rate = **9.89%**, from 9,854 to 10,828)

↑ Change in rank from 66 to 65 in NC

Average Weekly Wages: **337 dollars** (5-year change rate = **52.09%**, from 647 to 984)

↑ Change in rank from 89 to 32 in NC

Real GDP in Current Dollars: **47,819 dollars** (5-year change rate = **7.32%**, from 653,650 to 701,469)

↑ Change in rank from 79 to 77 in NC

### **Trends in the County Government Fiscal Strength dimension:**

Adjusted Tax Base: **20,708 dollars** (5-year change rate = **19.44%**, from 106,506 to 127,214)

↓ Change in rank from 36 to 39 in NC

County Sales Tax: **2,367,120 dollars** (5-year change rate = **74.05%**, from 3,196,842 to 5,563,963)

↑ Change in rank from 82 to 79 in NC

### **Trends in the Housing & Transportation dimension:**

Ratio of Average Estimated Home Value to Median Income : **9.09** (5-year change rate = **40.62%**, from 22.38 to 31.47)

↓ Change in rank from 89 to 90 in NC

Average Available Rent Money less the Average HUD Fair Market Rent: **242.7 dollars** (5-year change rate = **54.74%**, from 443.4 to 686.1)



↑ Change in rank from 67 to 63 in NC

**Trends in the Healthcare dimension:**

Opioid Deaths per 100,000 Residents: **56.1** (5-year change rate = **133.57%**, from 42 to 98.1)

↓ Change in rank from 93 to 100 in NC

Nurses per 10,000 Residents: **29.96** (5-year change rate = **19.72%**, from 151.89 to 181.85)

↑ Change in rank from 56 to 46 in NC

Physicians per 10,000 Residents: **-6.7** (5-year change rate = **-29.42%**, from 22.77 to 16.07)

↓ Change in rank from 17 to 39 in NC

Mental Health Professionals per 10,000 Residents: **1.46** (5-year change rate = **26.45%**, from 5.52 to 6.98)

↑ Change in rank from 46 to 36 in NC

**Trends in the Community Cohesion dimension:**

Violent Crimes per 10,000 Residents: **1.62** (4-year change rate = **92.2%**, from 1.76 to 3.38)

↓ Change in rank from 38 to 66 in NC

Property Crimes per 10,000 Residents: **-3.96** (4-year change rate = **-24.44%**, from 16.19 to 12.24)

↑ Change in rank from 41 to 33 in NC

Nonprofits Organizations per 1,000 Residents: **1.56** (5-year change rate = **51.51%**, from 3.04 to 4.6)

↑ Change in rank from 41 to 15 in NC

**Trends in the Socioeconomics dimension:**

Unemployment Rate (Q4): **-1.3 percent** (5-year change rate = **-29.46%**, from 4.3 to 3)

↑ Change in rank from 51 to 6 in NC

Median Household Income: **12,900 dollars** (5-year change rate = **27.68%**, from 46,600 to 59,500)

↑ Change in rank from 73 to 71 in NC

**Trends in the Education dimension:**

Graduation Percentage: **-2.3 percent** (5-year change rate = **-2.86%**, from 80.5 to 78.2)

↓ Change in rank from 92 to 97 in NC

Dropout Rate: **-2.63 percent** (5-year change rate = **-53.09%**, from 4.95 to 2.32)

↑ Change in rank from 99 to 79 in NC

Student to Teacher Ratio: **-1** (4-year change rate = **-7.58%**, from 15 to 14)

↑ Change in rank from 50 to 32 in NC

3rd Grade Reading Proficiency: **-0.6 percent** (5-year change rate = **-1.24%**, from 48.2 to 47.6)

↑ Change in rank from 77 to 34 in NC

Postsecondary Enrollment Percentage: **-0.17 percent** (5-year change rate = **-54.6%**, from 0.32 to 0.14)

↓ Change in rank from 16 to 90 in NC

**Data Advisements:**

- This county has a population under 20,000 residents according to the US Census Bureau; in low population areas, some variable estimates can be less stable and more sensitive to changes.
- Availability of Broadband Services is not available for 2022 and was excluded from calculating this county's dimension and resilience score.

- Adoption Rate of Broadband Services is not available for 2022 and was excluded from calculating this county's dimension and resilience score.