

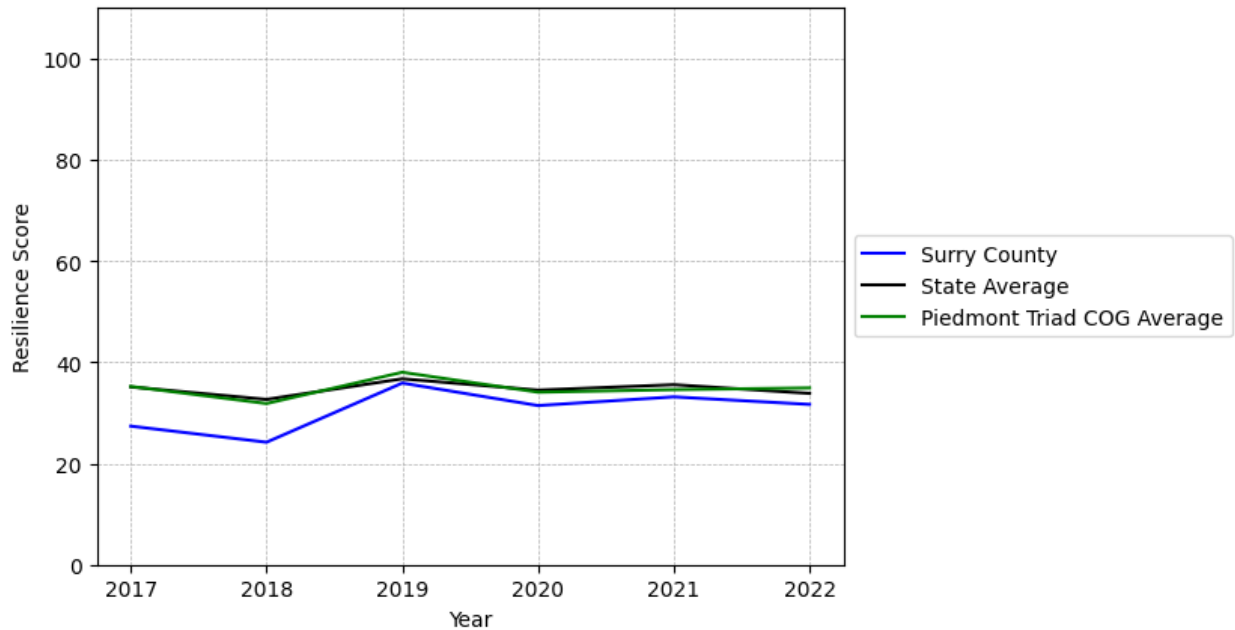
# Surry County Summary

---

**Resilience Score: 31.66**

In 2022, Surry County achieved a Resilience Score of 31.66, which is average as compared to the North Carolina State average.

**Surry County's Resilience Score Over Time  
As Compared to the Region and State Averages**



*Note: Resilience Scores are normalized from 1 to 100 with the most resilient county scoring 100. The Resilience Score is determined based on a county's performance relative to NC's other 99 counties.*

Surry County's Resilience Score is comprised of 9 distinct dimensions of resilience. Below are Surry County's scores for 2022 on those 9 dimensions, and their rank relative to other North Carolina counties.

### **Business Community Health: 7.82**

This component examines the strength and diversity of the local business community, including factors such as the number of businesses, employment levels, and industry diversity. Surry County's performance on this dimension is average when compared to other North Carolina counties, ranking 73rd in the state.

Notable variables for Surry County within this dimension include:

<b>VARIABLE STRENGTH</b>	<b>FACTOR</b>	<b>SURRY COUNTY VALUE</b>	<b>NC COUNTY AVERAGE VALUE</b>
<b>Strongest</b>	Science, Engineering, & Technology Industries Employment Percentage	2.31%	1.79%
<b>2nd Strongest</b>	Total Employment Level	28,114	45,758
<b>Weakest</b>	Percentage of Companies in Science, Engineering, & Technology Industries	3.83%	6.13%

---

### **County Government Fiscal Strength: 49.59**

This component looks at the financial health of local governments, including their ability to generate revenue, manage debt, and maintain adequate reserves to weather economic downturns. Surry County's performance on this dimension is average when compared to other North Carolina counties, ranking 37th in the state.

Notable variables for Surry County within this dimension include:

<b>VARIABLE STRENGTH</b>	<b>FACTOR</b>	<b>SURRY COUNTY VALUE</b>	<b>NC COUNTY AVERAGE VALUE</b>
<b>Top 10 in NC, Strongest</b>	Capital Assets Condition Ratio of County Government	0.72	0.51
<b>2nd Strongest</b>	Solvency Ratio of County Government	53.19	46.7
<b>Weakest</b>	Operations Ratio of County Government	1.03	1.11

---

### **Communication: 51.9**

This component assesses the availability and quality of communication infrastructure, such as broadband internet access, which is crucial for businesses and residents to stay connected and resilient during disruptions. Surry County's performance on this dimension is average when compared to other North Carolina counties, ranking 42nd in the state.

Notable variables for Surry County within this dimension include:

VARIABLE STRENGTH	FACTOR	SURRY COUNTY VALUE	NC COUNTY AVERAGE VALUE
Strongest	Broadband Availability	0.83	0.6
2nd Strongest	In-Vehicle High-Speed Mobile Data Availability	0.32	0.37
Weakest	Percentage of Population without Smartphones	21.68%	17.22%

### Housing & Transportation: 67.51

This component evaluates the accessibility and affordability of housing, as well as the availability of reliable transportation options, which are essential for a resilient workforce and economy. Surry County's performance on this dimension is average when compared to other North Carolina counties, ranking 39th in the state.

Notable variables for Surry County within this dimension include:

VARIABLE STRENGTH	FACTOR	SURRY COUNTY VALUE	NC COUNTY AVERAGE VALUE
Strongest	Average Available Rent Money less the Average HUD Fair Market Rent	\$1,052.7	\$799.87
2nd Strongest	Percentage of Owner-Occupied Homes	62.91%	57.87%
Weakest	Percentage of Homes Built Before 1980	50.99%	40.9%

### Healthcare: 29.44

The healthcare component examines the availability and quality of healthcare facilities, services, and professionals, which are critical for maintaining a healthy and productive workforce. Surry County's performance on this dimension is average when compared to other North Carolina counties, ranking 38th in the state.

Notable variables for Surry County within this dimension include:

VARIABLE STRENGTH	FACTOR	SURRY COUNTY VALUE	NC COUNTY AVERAGE VALUE
Strongest	Nurses per 10,000 Residents	289.56	262.64
2nd Strongest	Nursing Home Beds per 1,000 Residents of Age	30.4	27.53

<b>Weakest</b>	65+ Opioid Deaths per 100,000 Residents	37.6	38.73
----------------	---	------	-------

### Community Cohesion: 54.08

This component looks at the strength of social networks, community engagement, and the ability of residents to work together to address challenges and support one another during times of adversity. Surry County's performance on this dimension is average when compared to other North Carolina counties, ranking 57th in the state.

Notable variables for Surry County within this dimension include:

VARIABLE STRENGTH	FACTOR	SURRY COUNTY VALUE	NC COUNTY AVERAGE VALUE
<b>Strongest</b>	Percentage of Inactive Voters	10.16%	11.3%
<b>2nd Strongest</b>	Violent Crimes per 10,000 Residents	2.04	3.07
<b>Bottom 10 in NC, Weakest</b>	Nonprofits Organizations per 1,000 Residents	0.85	3.17

### Socioeconomics: 36.3

This component considers factors such as income levels, poverty rates, and inequality, which can impact a community's ability to withstand and recover from economic shocks. Surry County's performance on this dimension is average when compared to other North Carolina counties, ranking 67th in the state.

Notable variables for Surry County within this dimension include:

VARIABLE STRENGTH	FACTOR	SURRY COUNTY VALUE	NC COUNTY AVERAGE VALUE
<b>Strongest</b>	Unemployment Rate (Q4)	3.3%	3.9%
<b>2nd Strongest</b>	Percentage of Households Spending more than 30% Income on Housing	21.5%	24.53%
<b>Weakest</b>	Percentage of Population without a High School Diploma	12.74%	9.05%

### Education: 57.21

This component evaluates the quality of educational institutions and the educational attainment levels of the local population, which play a crucial role in developing a skilled and adaptable workforce. Surry County's performance on this dimension is fairly strong when compared to other North Carolina counties, ranking 27th in the state.

Notable variables for Surry County within this dimension include:

VARIABLE STRENGTH	FACTOR	SURRY COUNTY VALUE	NC COUNTY AVERAGE VALUE
Top 10 in NC, Strongest	Graduation Percentage	93.37%	88.03%
2nd Strongest	3rd Grade Reading Proficiency	52.03%	43.1%
Weakest	Postsecondary Enrollment Percentage	20.87%	25.48%

---

### Household Characteristics: 34.3

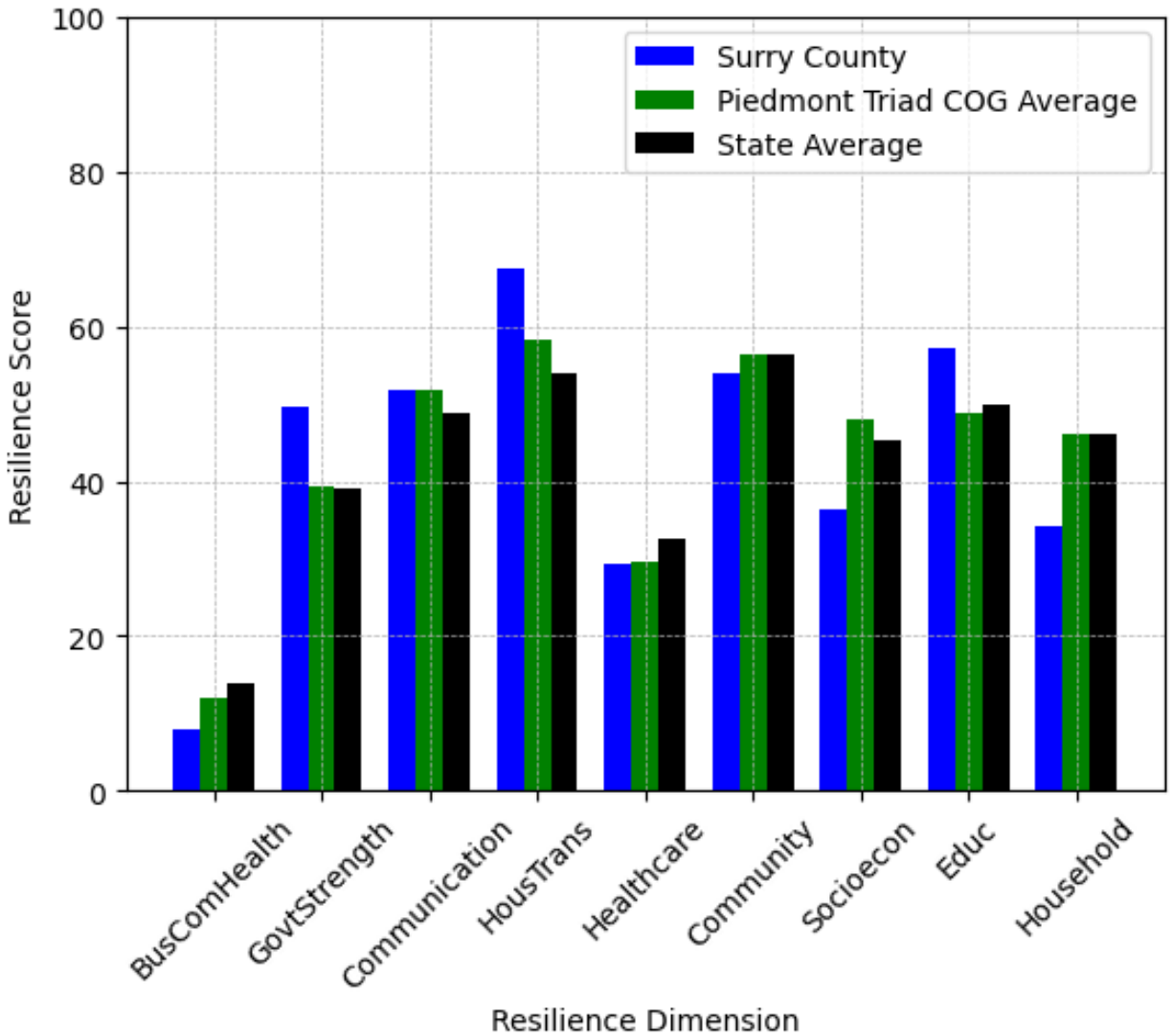
This component examines factors such as the proportion of single-parent households, age distribution, and the proportion of individuals with disabilities, as these elements can influence a community's resilience and ability to recover from economic disruptions. Surry County's performance on this dimension is fairly weak when compared to other North Carolina counties, ranking 81st in the state.

Notable variables for Surry County within this dimension include:

VARIABLE STRENGTH	FACTOR	SURRY COUNTY VALUE	NC COUNTY AVERAGE VALUE
Strongest	Percentage of Single Parent Households	35.149%	36.132%
2nd Strongest	Percentage of Population 65 and Older	20.58%	20.53%
Weakest	Percentage of Population with Limited English Proficiency	2.003%	1.454%

---

## Surry County's Resilience Dimension Scores Over Time As Compared to the Region and State Averages



*Note: Resilience Scores are normalized from 1 to 100 with the most resilient county scoring 100. The Resilience Score is determined based on a county's performance relative to NC's other 99 counties.*

## **Notable Trends in Resilience Indicators, 2017-2022**

*NOTE: The key trends in the this section are identified based on change rates of at least .15 standard deviations over at least 5 years. Variables are positively oriented such that a positive trend indicates improved performance (e.g., 'improvement' in property crime is a lower crime rate, while 'decline' in property crime indicates a higher crime rate).*

### **Trends in the Business Community Health dimension:**

Total Employment Level: **-795** (5-year change rate = **-2.75%**, from 28,910 to 28,114)

↓ Change in rank from 32 to 33 in NC

Average Weekly Wages: **221 dollars** (5-year change rate = **30.91%**, from 715 to 936)

↑ Change in rank from 52 to 43 in NC

Real GDP in Current Dollars: **41,701 dollars** (5-year change rate = **1.68%**, from 2,485,009 to 2,526,710)

→ No change in rank

### **Trends in the County Government Fiscal Strength dimension:**

Adjusted Tax Base: **15,403 dollars** (5-year change rate = **20.75%**, from 74,227 to 89,630)

↑ Change in rank from 70 to 67 in NC

County Sales Tax: **7,990,310 dollars** (5-year change rate = **42.42%**, from 18,835,574 to 26,825,884)

→ No change in rank

### **Trends in the Housing & Transportation dimension:**

Ratio of Average Estimated Home Value to Median Income : **1.17** (5-year change rate = **28.3%**, from 4.13 to 5.3)

↑ Change in rank from 40 to 34 in NC

Average Available Rent Money less the Average HUD Fair Market Rent: **632.5 dollars** (5-year change rate = **150.52%**, from 420.2 to 1,052.7)

↑ Change in rank from 72 to 17 in NC

**Trends in the Healthcare dimension:**

Opioid Deaths per 100,000 Residents: **7.1** (5-year change rate = **23.28%**, from 30.5 to 37.6)

↑ Change in rank from 70 to 55 in NC

Nurses per 10,000 Residents: **22.05** (5-year change rate = **8.24%**, from 267.51 to 289.56)

↑ Change in rank from 29 to 23 in NC

Physicians per 10,000 Residents: **-0.57** (5-year change rate = **-3.23%**, from 17.67 to 17.1)

↓ Change in rank from 31 to 32 in NC

Mental Health Professionals per 10,000 Residents: **1.4** (5-year change rate = **34.48%**, from 4.06 to 5.46)

↑ Change in rank from 71 to 50 in NC

**Trends in the Community Cohesion dimension:**

Violent Crimes per 10,000 Residents: **1.25** (4-year change rate = **158.85%**, from 0.79 to 2.04)

↓ Change in rank from 12 to 38 in NC

Property Crimes per 10,000 Residents: **-0.55** (4-year change rate = **-3.64%**, from 15.18 to 14.62)

↓ Change in rank from 36 to 49 in NC

Nonprofits Organizations per 1,000 Residents: **-1.1** (5-year change rate = **-56.28%**, from 1.95 to 0.85)

↓ Change in rank from 79 to 96 in NC

**Trends in the Socioeconomics dimension:**

Unemployment Rate (Q4): **-0.6 percent** (5-year change rate = **-14.66%**, from 3.9 to 3.3)



↓ Change in rank from 23 to 25 in NC

Median Household Income: **27,700 dollars** (5-year change rate = **59.44%**, from 46,600 to 74,300)

↑ Change in rank from 72 to 32 in NC

**Trends in the Education dimension:**

Graduation Percentage: **-0.5 percent** (5-year change rate = **-0.53%**, from 93.87 to 93.37)

↓ Change in rank from 4 to 10 in NC

Dropout Rate: **-0.62 percent** (5-year change rate = **-31.54%**, from 1.98 to 1.35)

↑ Change in rank from 40 to 36 in NC

Student to Teacher Ratio: **-1** (4-year change rate = **-7.65%**, from 15 to 14)

↑ Change in rank from 53 to 41 in NC

3rd Grade Reading Proficiency: **-5.82 percent** (5-year change rate = **-10.06%**, from 57.84 to 52.03)

↑ Change in rank from 35 to 20 in NC

**Data Advisements:**

- Availability of Broadband Services is not available for 2022 and was excluded from calculating this county's dimension and resilience score.
- Adoption Rate of Broadband Services is not available for 2022 and was excluded from calculating this county's dimension and resilience score.