

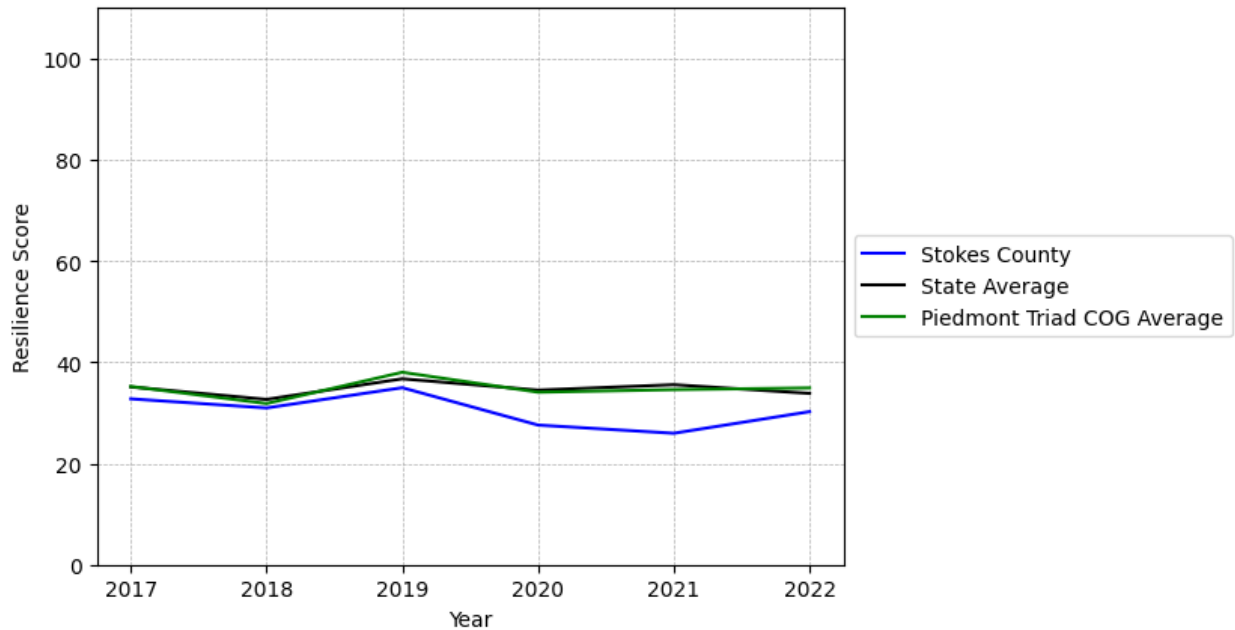
# Stokes County Summary

---

**Resilience Score: 30.23**

In 2022, Stokes County achieved a Resilience Score of 30.23, which is average as compared to the North Carolina State average.

**Stokes County's Resilience Score Over Time  
As Compared to the Region and State Averages**



*Note: Resilience Scores are normalized from 1 to 100 with the most resilient county scoring 100. The Resilience Score is determined based on a county's performance relative to NC's other 99 counties.*

Stokes County's Resilience Score is comprised of 9 distinct dimensions of resilience. Below are Stokes County's scores for 2022 on those 9 dimensions, and their rank relative to other North Carolina counties.

### **Business Community Health: 1**

This component examines the strength and diversity of the local business community, including factors such as the number of businesses, employment levels, and industry diversity. Stokes County's performance on this dimension is fairly weak when compared to other North Carolina counties, ranking 100th in the state.

Notable variables for Stokes County within this dimension include:

<b>VARIABLE STRENGTH</b>	<b>FACTOR</b>	<b>STOKES COUNTY VALUE</b>	<b>NC COUNTY AVERAGE VALUE</b>
<b>Strongest</b>	Private Sector Diversity	0.327	0.28
<b>2nd Strongest</b>	Real GDP in Current Dollars	\$1,208,306	\$6,092,555
<b>Bottom 10 in NC, Weakest</b>	Average Weekly Wages	\$771	\$951

---

### **County Government Fiscal Strength: 18.97**

This component looks at the financial health of local governments, including their ability to generate revenue, manage debt, and maintain adequate reserves to weather economic downturns. Stokes County's performance on this dimension is weak when compared to other North Carolina counties, ranking 88th in the state.

Notable variables for Stokes County within this dimension include:

<b>VARIABLE STRENGTH</b>	<b>FACTOR</b>	<b>STOKES COUNTY VALUE</b>	<b>NC COUNTY AVERAGE VALUE</b>
<b>Strongest</b>	Capital Assets Condition Ratio of County Government	0.57	0.51
<b>2nd Strongest</b>	Adjusted Tax Base	\$94,349	\$124,092
<b>Weakest</b>	Quick Ratio of County Government	5.6	16.4

---

### **Communication: 46.62**

This component assesses the availability and quality of communication infrastructure, such as broadband internet access, which is crucial for businesses and residents to stay connected and resilient during disruptions. Stokes County's performance on this dimension is average when compared to other North Carolina counties, ranking 59th in the state.

Notable variables for Stokes County within this dimension include:

VARIABLE STRENGTH	FACTOR	STOKES COUNTY VALUE	NC COUNTY AVERAGE VALUE
<b>Strongest</b>	Local High-Speed Mobile Data Availability	0.76	0.66
<b>2nd Strongest</b>	Broadband Availability	0.63	0.6
<b>Bottom 10 in NC, Weakest</b>	Percentage of Population without Smartphones	23.71%	17.22%

### Housing & Transportation: 66.03

This component evaluates the accessibility and affordability of housing, as well as the availability of reliable transportation options, which are essential for a resilient workforce and economy. Stokes County's performance on this dimension is average when compared to other North Carolina counties, ranking 40th in the state.

Notable variables for Stokes County within this dimension include:

VARIABLE STRENGTH	FACTOR	STOKES COUNTY VALUE	NC COUNTY AVERAGE VALUE
<b>Top 10 in NC, Strongest</b>	Percentage of Population without Vehicles	2.77%	5.75%
<b>Top 10 in NC, 2nd Strongest</b>	Percentage of Owner-Occupied Homes	69.44%	57.87%
<b>Bottom 10 in NC, Weakest</b>	Percentage of People Driving Alone to Work	89.74%	86.36%

### Healthcare: 17.12

The healthcare component examines the availability and quality of healthcare facilities, services, and professionals, which are critical for maintaining a healthy and productive workforce. Stokes County's performance on this dimension is fairly weak when compared to other North Carolina counties, ranking 84th in the state.

Notable variables for Stokes County within this dimension include:

VARIABLE STRENGTH	FACTOR	STOKES COUNTY VALUE	NC COUNTY AVERAGE VALUE
<b>Strongest</b>	Nursing Home Beds per 1,000 Residents of Age 65+	28.43	27.53
<b>2nd Strongest</b>	Nurses per 10,000 Residents	132.73	262.64
<b>Weakest</b>	Physicians per 10,000 Residents	4	16.05

---

### Community Cohesion: 61.75

This component looks at the strength of social networks, community engagement, and the ability of residents to work together to address challenges and support one another during times of adversity. Stokes County's performance on this dimension is average when compared to other North Carolina counties, ranking 40th in the state.

Notable variables for Stokes County within this dimension include:

VARIABLE STRENGTH	FACTOR	STOKES COUNTY VALUE	NC COUNTY AVERAGE VALUE
Top 10 in NC, Strongest	Percentage of Inactive Voters	8.24%	11.3%
2nd Strongest	Violent Crimes per 10,000 Residents	N/A	3.07
Bottom 10 in NC, Weakest	Nonprofits Organizations per 1,000 Residents	1.17	3.17

---

### Socioeconomics: 54.83

This component considers factors such as income levels, poverty rates, and inequality, which can impact a community's ability to withstand and recover from economic shocks. Stokes County's performance on this dimension is average when compared to other North Carolina counties, ranking 32nd in the state.

Notable variables for Stokes County within this dimension include:

VARIABLE STRENGTH	FACTOR	STOKES COUNTY VALUE	NC COUNTY AVERAGE VALUE
Strongest	Percentage of Population without Health Insurance	8.62%	11.23%
2nd Strongest	Unemployment Rate (Q4)	3.2%	3.9%
Weakest	Population 25+ with at least a Bachelor's Degree	16.12%	24.4%

---

### Education: 52.04

This component evaluates the quality of educational institutions and the educational attainment levels of the local population, which play a crucial role in developing a skilled and adaptable workforce. Stokes County's performance on this dimension is average when compared to other North Carolina counties, ranking 39th in the state.

Notable variables for Stokes County within this dimension include:

VARIABLE STRENGTH	FACTOR	STOKES COUNTY VALUE	NC COUNTY AVERAGE VALUE
Strongest	Dropout Rate	0.75%	1.65%
2nd Strongest	Teacher Attrition Rate	0.08	0.12
Weakest	Postsecondary Enrollment Percentage	16.81%	25.48%

---

### Household Characteristics: 49.65

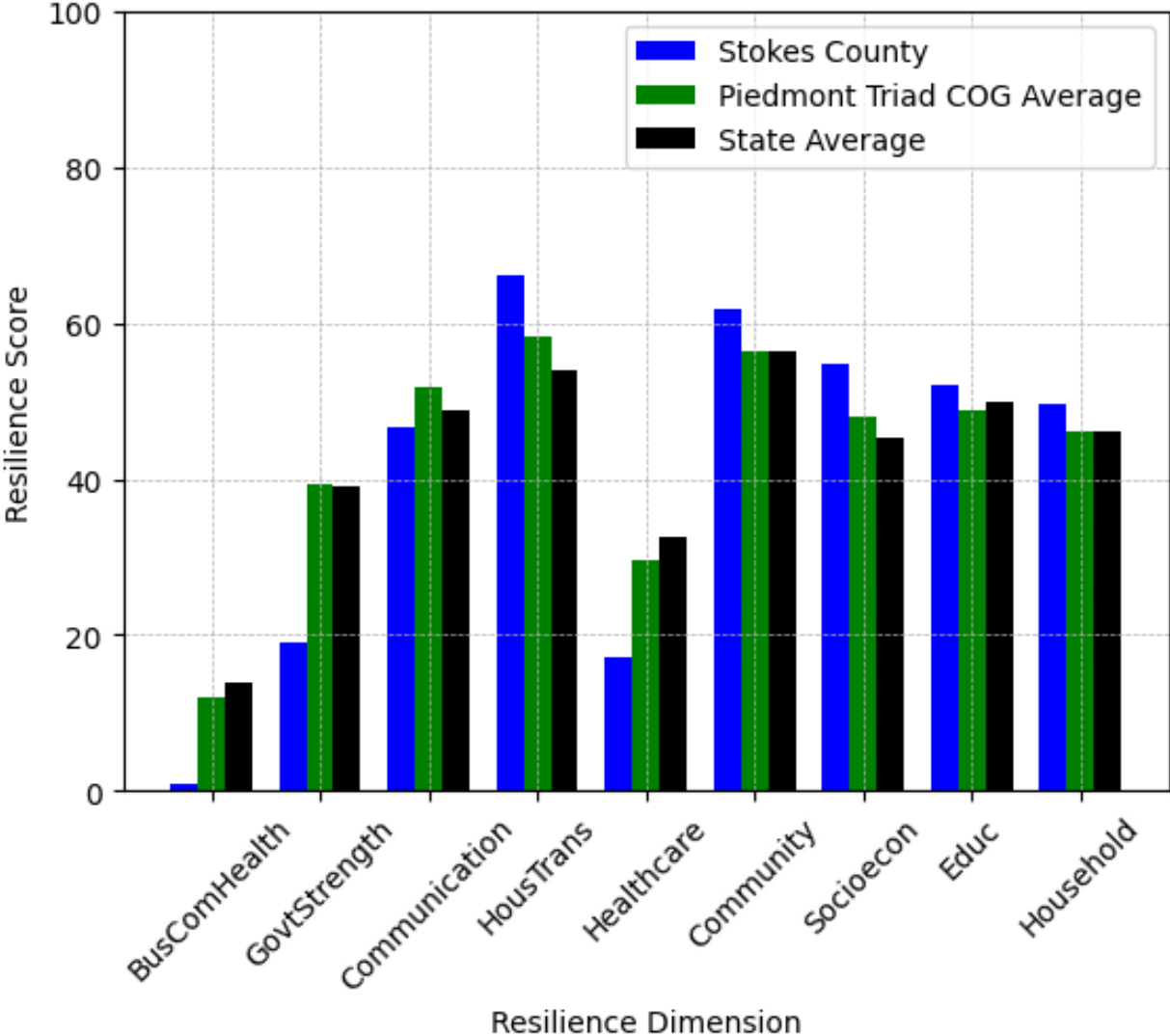
This component examines factors such as the proportion of single-parent households, age distribution, and the proportion of individuals with disabilities, as these elements can influence a community's resilience and ability to recover from economic disruptions. Stokes County's performance on this dimension is average when compared to other North Carolina counties, ranking 32nd in the state.

Notable variables for Stokes County within this dimension include:

VARIABLE STRENGTH	FACTOR	STOKES COUNTY VALUE	NC COUNTY AVERAGE VALUE
Top 10 in NC, Strongest	Percentage of Population with Limited English Proficiency	0.19%	1.454%
2nd Strongest	Percentage of Population 17 and Younger	18.54%	20.37%
Weakest	Percentage of Population with a Disability	19.838%	16.566%

---

### Stokes County's Resilience Dimension Scores Over Time As Compared to the Region and State Averages



*Note: Resilience Scores are normalized from 1 to 100 with the most resilient county scoring 100. The Resilience Score is determined based on a county's performance relative to NC's other 99 counties.*

## **Notable Trends in Resilience Indicators, 2017-2022**

*NOTE: The key trends in the this section are identified based on change rates of at least .15 standard deviations over at least 5 years. Variables are positively oriented such that a positive trend indicates improved performance (e.g., 'improvement' in property crime is a lower crime rate, while 'decline' in property crime indicates a higher crime rate).*

### **Trends in the Business Community Health dimension:**

Total Employment Level: **124** (5-year change rate = **1.66%**, from 7,489 to 7,613)

→ No change in rank

Average Weekly Wages: **155 dollars** (5-year change rate = **25.16%**, from 616 to 771)

↑ Change in rank from 98 to 97 in NC

Real GDP in Current Dollars: **7,733 dollars** (5-year change rate = **0.64%**, from 1,200,573 to 1,208,306)

→ No change in rank

### **Trends in the County Government Fiscal Strength dimension:**

Adjusted Tax Base: **16,066 dollars** (5-year change rate = **20.52%**, from 78,283 to 94,349)

↓ Change in rank from 58 to 62 in NC

County Sales Tax: **3,586,027 dollars** (5-year change rate = **50.1%**, from 7,157,535 to 10,743,562)

↓ Change in rank from 66 to 67 in NC

### **Trends in the Housing & Transportation dimension:**

Ratio of Average Estimated Home Value to Median Income : **2.45** (5-year change rate = **38.08%**, from 6.43 to 8.88)

↓ Change in rank from 53 to 54 in NC

Average Available Rent Money less the Average HUD Fair Market Rent: **474.3 dollars** (5-year change rate = **82.22%**, from 576.9 to 1,051.2)

↑ Change in rank from 37 to 21 in NC

**Trends in the Healthcare dimension:**

Opioid Deaths per 100,000 Residents: **0.2** (5-year change rate = **0.42%**, from 48.1 to 48.3)

↑ Change in rank from 97 to 78 in NC

Nurses per 10,000 Residents: **-18.35** (5-year change rate = **-12.15%**, from 151.08 to 132.73)

↓ Change in rank from 57 to 61 in NC

Physicians per 10,000 Residents: **-1.34** (5-year change rate = **-25.09%**, from 5.34 to 4)

↓ Change in rank from 81 to 87 in NC

Mental Health Professionals per 10,000 Residents: **-0.91** (5-year change rate = **-18.57%**, from 4.9 to 3.99)

↓ Change in rank from 56 to 77 in NC

**Trends in the Community Cohesion dimension:**

Nonprofits Organizations per 1,000 Residents: **-1.37** (5-year change rate = **-53.79%**, from 2.54 to 1.17)

↓ Change in rank from 59 to 91 in NC

**Trends in the Socioeconomics dimension:**

Unemployment Rate (Q4): **-0.8 percent** (5-year change rate = **-19.33%**, from 4 to 3.2)

↑ Change in rank from 30 to 19 in NC

Median Household Income: **20,500 dollars** (5-year change rate = **36.03%**, from 56,900 to 77,400)

↑ Change in rank from 32 to 29 in NC

**Trends in the Education dimension:**

Graduation Percentage: **-1.5 percent** (5-year change rate = **-1.66%**, from 90.4 to 88.9)



↓ Change in rank from 29 to 43 in NC

Dropout Rate: **-2.9 percent** (5-year change rate = **-79.52%**, from 3.64 to 0.75)

↑ Change in rank from 94 to 17 in NC

3rd Grade Reading Proficiency: **-14.1 percent** (5-year change rate = **-23.62%**, from 59.7 to 45.6)

↓ Change in rank from 24 to 41 in NC

### **Data Advisements:**

- Availability of Broadband Services is not available for 2022 and was excluded from calculating this county's dimension and resilience score.
- Adoption Rate of Broadband Services is not available for 2022 and was excluded from calculating this county's dimension and resilience score.
- Violent Crimes per 10,000 Residents is not available for 2022 and was excluded from calculating this county's dimension and resilience score.
- Property Crimes per 10,000 Residents is not available for 2022 and was excluded from calculating this county's dimension and resilience score.