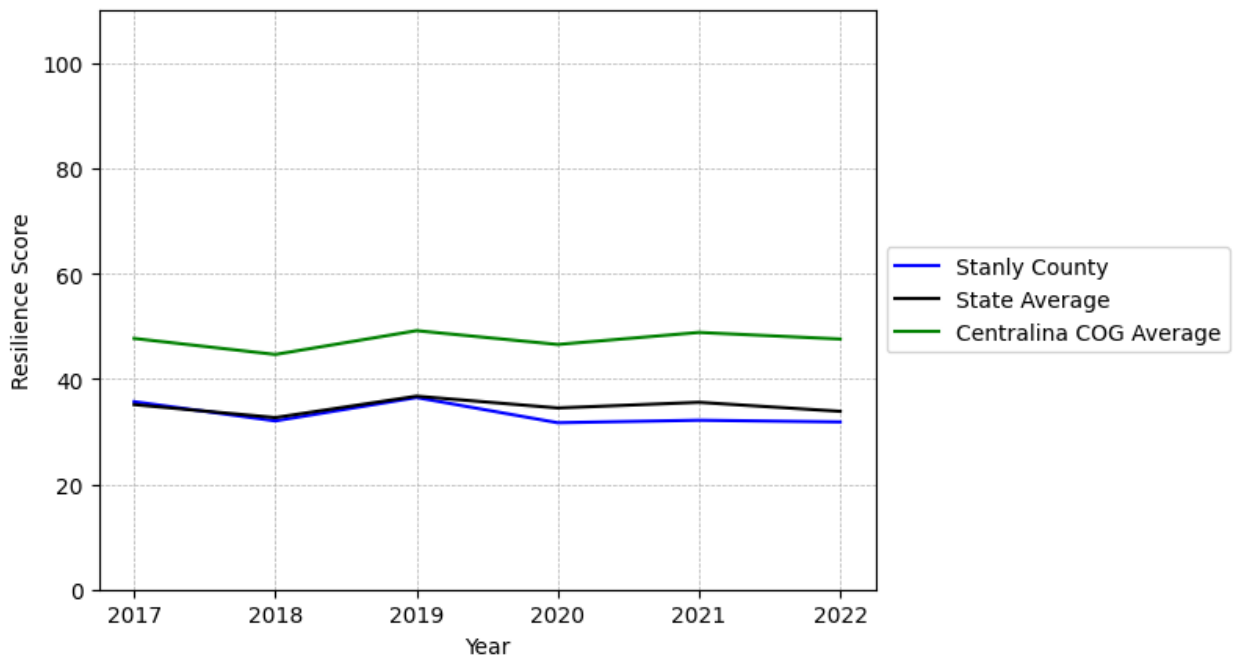


Stanly County Summary

Resilience Score: 31.82

In 2022, Stanly County achieved a Resilience Score of 31.82, which is average as compared to the North Carolina State average.

**Stanly County's Resilience Score Over Time
As Compared to the Region and State Averages**



Note: Resilience Scores are normalized from 1 to 100 with the most resilient county scoring 100. The Resilience Score is determined based on a county's performance relative to NC's other 99 counties.

Stanly County's Resilience Score is comprised of 9 distinct dimensions of resilience. Below are Stanly County's scores for 2022 on those 9 dimensions, and their rank relative to other North Carolina counties.

Business Community Health: 4.25

This component examines the strength and diversity of the local business community, including factors such as the number of businesses, employment levels, and industry diversity. Stanly County's performance on this dimension is fairly weak when compared to other North Carolina counties, ranking 94th in the state.

Notable variables for Stanly County within this dimension include:

VARIABLE STRENGTH	FACTOR	STANLY COUNTY VALUE	NC COUNTY AVERAGE VALUE
Strongest	Total Employment Level	21,3	45,758
2nd Strongest	Science, Engineering, & Technology Industries Employment Percentage	1.2%	1.79%
Weakest	Percentage of Companies in Science, Engineering, & Technology Industries	3.63%	6.13%

County Government Fiscal Strength: 43.23

This component looks at the financial health of local governments, including their ability to generate revenue, manage debt, and maintain adequate reserves to weather economic downturns. Stanly County's performance on this dimension is average when compared to other North Carolina counties, ranking 49th in the state.

Notable variables for Stanly County within this dimension include:

VARIABLE STRENGTH	FACTOR	STANLY COUNTY VALUE	NC COUNTY AVERAGE VALUE
Strongest	Solvency Ratio of County Government	54.94	46.7
2nd Strongest	Dependency Ratio of County Government	0.14	0.16
Weakest	Adjusted Tax Base	\$87,301	\$124,092

Communication: 61.45

This component assesses the availability and quality of communication infrastructure, such as broadband internet access, which is crucial for businesses and residents to stay connected and resilient during disruptions. Stanly County's performance on this dimension is fairly strong when compared to other North Carolina counties, ranking 29th in the state.

Notable variables for Stanly County within this dimension include:

VARIABLE STRENGTH	FACTOR	STANLY COUNTY VALUE	NC COUNTY AVERAGE VALUE
Strongest	Local High-Speed Mobile Data Availability	0.85	0.66
2nd Strongest	In-Vehicle High-Speed Mobile Data Availability	0.39	0.37
Weakest	Percentage of Population without Smartphones	15.66%	17.22%

Housing & Transportation: 48.77

This component evaluates the accessibility and affordability of housing, as well as the availability of reliable transportation options, which are essential for a resilient workforce and economy. Stanly County's performance on this dimension is fairly weak when compared to other North Carolina counties, ranking 70th in the state.

Notable variables for Stanly County within this dimension include:

VARIABLE STRENGTH	FACTOR	STANLY COUNTY VALUE	NC COUNTY AVERAGE VALUE
Strongest	Percentage of Owner-Occupied Homes	64.01%	57.87%
2nd Strongest	Average Available Rent Money less the Average HUD Fair Market Rent	\$965.7	\$799.87
Bottom 10 in NC, Weakest	Percentage of Homes Built Before 1980	58.32%	40.9%

Healthcare: 30.47

The healthcare component examines the availability and quality of healthcare facilities, services, and professionals, which are critical for maintaining a healthy and productive workforce. Stanly County's performance on this dimension is average when compared to other North Carolina counties, ranking 35th in the state.

Notable variables for Stanly County within this dimension include:

VARIABLE STRENGTH	FACTOR	STANLY COUNTY VALUE	NC COUNTY AVERAGE VALUE
Strongest	Nursing Home Beds per 1,000 Residents of Age 65+	31.61	27.53

2nd Strongest	Mental Health Professionals per 10,000 Residents	7.48	6.6
Weakest	Physicians per 10,000 Residents	10.65	16.05

Community Cohesion: 68.14

This component looks at the strength of social networks, community engagement, and the ability of residents to work together to address challenges and support one another during times of adversity. Stanly County's performance on this dimension is fairly strong when compared to other North Carolina counties, ranking 23rd in the state.

Notable variables for Stanly County within this dimension include:

VARIABLE STRENGTH	FACTOR	STANLY COUNTY VALUE	NC COUNTY AVERAGE VALUE
Strongest	Percentage of Inactive Voters	9.18%	11.3%
2nd Strongest	Yearly Population Change Percentage	1.746%	0.906%
Weakest	Property Crimes per 10,000 Residents	14.68	15.74

Socioeconomics: 49.68

This component considers factors such as income levels, poverty rates, and inequality, which can impact a community's ability to withstand and recover from economic shocks. Stanly County's performance on this dimension is average when compared to other North Carolina counties, ranking 39th in the state.

Notable variables for Stanly County within this dimension include:

VARIABLE STRENGTH	FACTOR	STANLY COUNTY VALUE	NC COUNTY AVERAGE VALUE
Strongest	Unemployment Rate (Q4)	3.1%	3.9%
2nd Strongest	Percentage of Households Spending more than 30% Income on Housing	21.38%	24.53%
Weakest	Population 25+ with at least a Bachelor's Degree	18.74%	24.4%

Education: 40.87

This component evaluates the quality of educational institutions and the educational attainment levels of the local population, which play a crucial role in developing a skilled and adaptable workforce. Stanly County's performance on this dimension is average when compared to other North Carolina counties, ranking 61st in the state.

Notable variables for Stanly County within this dimension include:

VARIABLE STRENGTH	FACTOR	STANLY COUNTY VALUE	NC COUNTY AVERAGE VALUE
Strongest	Graduation Percentage	90.3%	88.03%
2nd Strongest	3rd Grade Reading Proficiency	45.8%	43.1%
Weakest	Student to Teacher Ratio	15	14

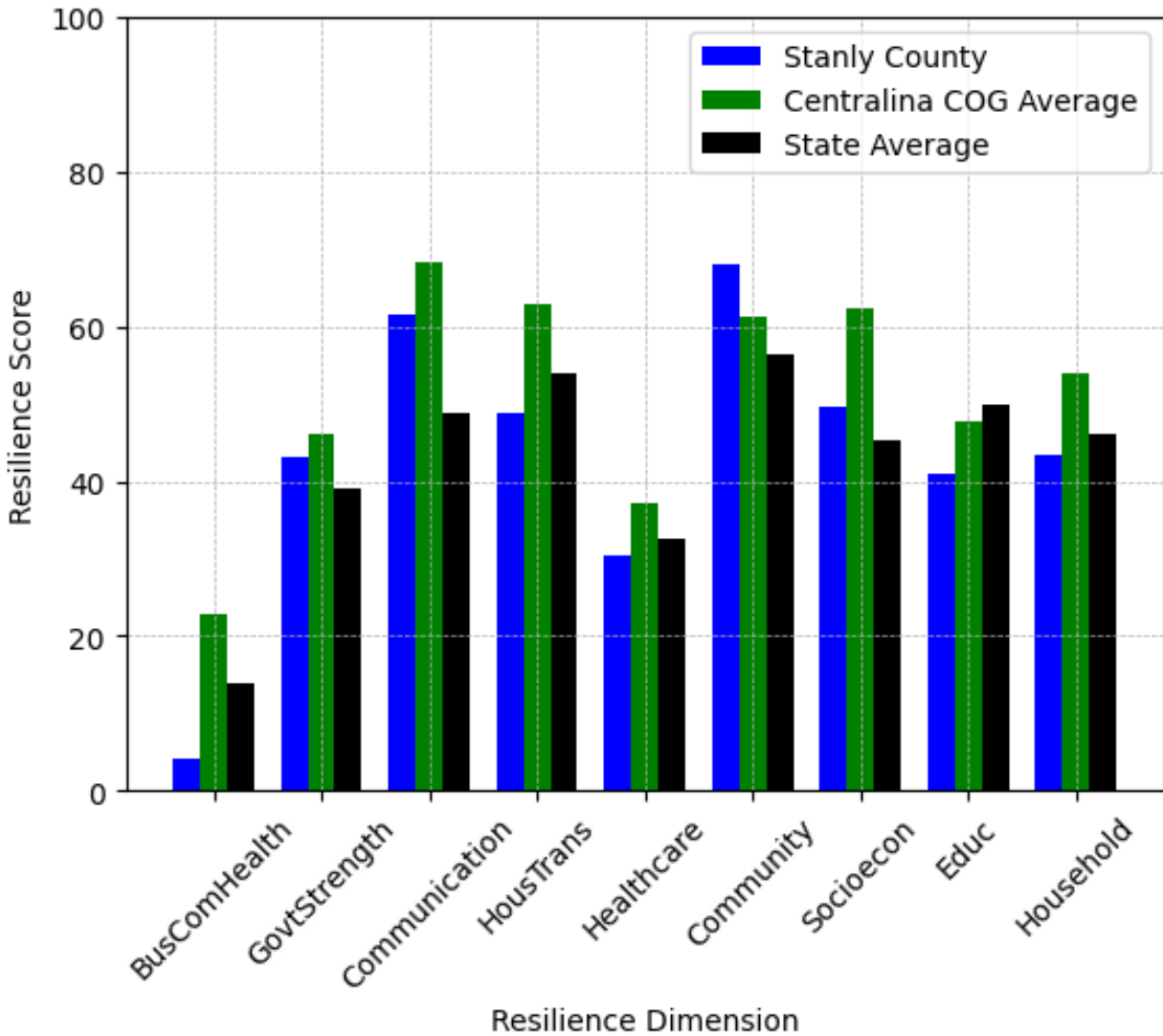
Household Characteristics: 43.38

This component examines factors such as the proportion of single-parent households, age distribution, and the proportion of individuals with disabilities, as these elements can influence a community's resilience and ability to recover from economic disruptions. Stanly County's performance on this dimension is average when compared to other North Carolina counties, ranking 56th in the state.

Notable variables for Stanly County within this dimension include:

VARIABLE STRENGTH	FACTOR	STANLY COUNTY VALUE	NC COUNTY AVERAGE VALUE
Strongest	Percentage of Population 65 and Older	18.89%	20.53%
2nd Strongest	Percentage of Population with a Disability	17.147%	16.566%
Weakest	Percentage of Population 17 and Younger	21.5%	20.37%

Stanly County's Resilience Dimension Scores Over Time As Compared to the Region and State Averages



Note: Resilience Scores are normalized from 1 to 100 with the most resilient county scoring 100. The Resilience Score is determined based on a county's performance relative to NC's other 99 counties.

Notable Trends in Resilience Indicators, 2017-2022

NOTE: The key trends in the this section are identified based on change rates of at least .15 standard deviations over at least 5 years. Variables are positively oriented such that a positive trend indicates improved performance (e.g., 'improvement' in property crime is a lower crime rate, while 'decline' in property crime indicates a higher crime rate).

Trends in the Business Community Health dimension:

Total Employment Level: **1,776** (5-year change rate = **9.1%**, from 19,524 to 21,300)

↑ Change in rank from 43 to 41 in NC

Average Weekly Wages: **158 dollars** (5-year change rate = **22.8%**, from 693 to 851)

↓ Change in rank from 66 to 83 in NC

Real GDP in Current Dollars: **25,375 dollars** (5-year change rate = **1.38%**, from 1,844,360 to 1,869,735)

→ No change in rank

Trends in the County Government Fiscal Strength dimension:

Adjusted Tax Base: **12,467 dollars** (5-year change rate = **16.66%**, from 74,834 to 87,301)

↓ Change in rank from 68 to 75 in NC

County Sales Tax: **8,212,401 dollars** (5-year change rate = **83.03%**, from 9,890,441 to 18,102,842)

↑ Change in rank from 51 to 47 in NC

Trends in the Housing & Transportation dimension:

Ratio of Average Estimated Home Value to Median Income : **2.45** (5-year change rate = **43.9%**, from 5.57 to 8.02)

↓ Change in rank from 46 to 48 in NC

Average Available Rent Money less the Average HUD Fair Market Rent: **291.4 dollars** (5-year change rate = **43.22%**, from 674.3 to 965.7)

↓ Change in rank from 18 to 28 in NC

Trends in the Healthcare dimension:

Opioid Deaths per 100,000 Residents: **-4** (5-year change rate = **-11.17%**, from 35.8 to 31.8)

↑ Change in rank from 85 to 35 in NC

Nurses per 10,000 Residents: **-35.77** (5-year change rate = **-16.55%**, from 216.17 to 180.4)

↓ Change in rank from 42 to 47 in NC

Physicians per 10,000 Residents: **-1.39** (5-year change rate = **-11.54%**, from 12.04 to 10.65)

↓ Change in rank from 49 to 57 in NC

Mental Health Professionals per 10,000 Residents: **1.47** (5-year change rate = **24.46%**, from 6.01 to 7.48)

↑ Change in rank from 43 to 32 in NC

Trends in the Community Cohesion dimension:

Violent Crimes per 10,000 Residents: **-0.18** (4-year change rate = **-7.39%**, from 2.46 to 2.28)

↑ Change in rank from 58 to 42 in NC

Property Crimes per 10,000 Residents: **-8.6** (4-year change rate = **-36.96%**, from 23.28 to 14.68)

↑ Change in rank from 66 to 52 in NC

Nonprofits Organizations per 1,000 Residents: **0.87** (5-year change rate = **33.94%**, from 2.57 to 3.44)

↑ Change in rank from 58 to 41 in NC

Trends in the Socioeconomics dimension:

Unemployment Rate (Q4): **-0.9 percent** (5-year change rate = **-21.85%**, from 4 to 3.1)

↑ Change in rank from 29 to 14 in NC

Median Household Income: **16,400 dollars** (5-year change rate = **29.55%**, from 55,500 to 71,900)

↓ Change in rank from 39 to 41 in NC

Trends in the Education dimension:

Graduation Percentage: **6.2 percent** (5-year change rate = **7.37%**, from 84.1 to 90.3)

↑ Change in rank from 75 to 31 in NC

Student to Teacher Ratio: **1** (4-year change rate = **8.59%**, from 14 to 15)

↓ Change in rank from 34 to 80 in NC

3rd Grade Reading Proficiency: **-7.3 percent** (5-year change rate = **-13.75%**, from 53.1 to 45.8)

↑ Change in rank from 55 to 39 in NC

Data Advisements:

- Availability of Broadband Services is not available for 2022 and was excluded from calculating this county's dimension and resilience score.
- Adoption Rate of Broadband Services is not available for 2022 and was excluded from calculating this county's dimension and resilience score.