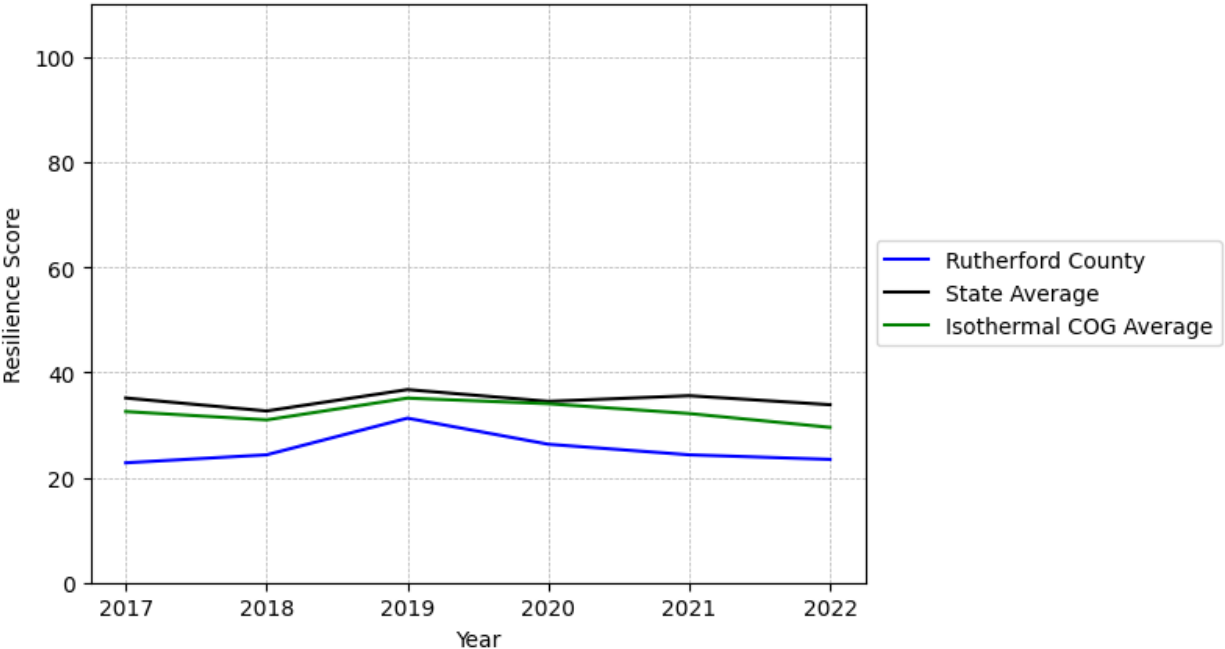


Rutherford County Summary

Resilience Score: 23.44

In 2022, Rutherford County achieved a Resilience Score of 23.44, which is fairly weak as compared to the North Carolina State average.

**Rutherford County's Resilience Score Over Time
As Compared to the Region and State Averages**



Note: Resilience Scores are normalized from 1 to 100 with the most resilient county scoring 100. The Resilience Score is determined based on a county's performance relative to NC's other 99 counties.

Rutherford County's Resilience Score is comprised of 9 distinct dimensions of resilience. Below are Rutherford County's scores for 2022 on those 9 dimensions, and their rank relative to other North Carolina counties.

Business Community Health: 5.11

This component examines the strength and diversity of the local business community, including factors such as the number of businesses, employment levels, and industry diversity. Rutherford County's performance on this dimension is fairly weak when compared to other North Carolina counties, ranking 88th in the state.

Notable variables for Rutherford County within this dimension include:

VARIABLE STRENGTH	FACTOR	RUTHERFORD COUNTY VALUE	NC COUNTY AVERAGE VALUE
Strongest	Total Employment Level	18,497	45,758
2nd Strongest	Private Sector Diversity	0.265	0.28
Weakest	Ratio of Available Child Care Slots to Number of Children under Five	0.47	0.59

County Government Fiscal Strength: 46.79

This component looks at the financial health of local governments, including their ability to generate revenue, manage debt, and maintain adequate reserves to weather economic downturns. Rutherford County's performance on this dimension is average when compared to other North Carolina counties, ranking 43rd in the state.

Notable variables for Rutherford County within this dimension include:

VARIABLE STRENGTH	FACTOR	RUTHERFORD COUNTY VALUE	NC COUNTY AVERAGE VALUE
Top 10 in NC, Strongest	Debt Service Ratio of County Government	0.01	0.07
2nd Strongest	Solvency Ratio of County Government	58.09	46.7
Weakest	Quick Ratio of County Government	7.74	16.4

Communication: 53.9

This component assesses the availability and quality of communication infrastructure, such as broadband internet access, which is crucial for businesses and residents to stay connected and resilient during disruptions. Rutherford County's performance on this dimension is average when compared to other North Carolina counties, ranking 41st in the state.

Notable variables for Rutherford County within this dimension include:

VARIABLE STRENGTH	FACTOR	RUTHERFORD COUNTY VALUE	NC COUNTY AVERAGE VALUE
Strongest	Broadband Availability	0.67	0.6
2nd Strongest	Local High-Speed Mobile Data Availability	0.72	0.66
Weakest	Percentage of Population without Smartphones	18.33%	17.22%

Housing & Transportation: 51.65

This component evaluates the accessibility and affordability of housing, as well as the availability of reliable transportation options, which are essential for a resilient workforce and economy. Rutherford County's performance on this dimension is average when compared to other North Carolina counties, ranking 65th in the state.

Notable variables for Rutherford County within this dimension include:

VARIABLE STRENGTH	FACTOR	RUTHERFORD COUNTY VALUE	NC COUNTY AVERAGE VALUE
Strongest	Percentage of People Driving Alone to Work	84.05%	86.36%
2nd Strongest	Ratio of Average Estimated Home Value to Median Income	6.02	13.67
Weakest	Percentage of Households with More Residents than Rooms	3.11%	2.1%

Healthcare: 18.52

The healthcare component examines the availability and quality of healthcare facilities, services, and professionals, which are critical for maintaining a healthy and productive workforce. Rutherford County's performance on this dimension is fairly weak when compared to other North Carolina counties, ranking 77th in the state.

Notable variables for Rutherford County within this dimension include:

VARIABLE STRENGTH	FACTOR	RUTHERFORD COUNTY VALUE	NC COUNTY AVERAGE VALUE
Strongest	Nursing Home Beds per 1,000 Residents of Age 65+	28.92	27.53
2nd Strongest	Nurses per 10,000 Residents	208.18	262.64

Bottom 10 in NC, Weakest	Opioid Deaths per 100,000 Residents	62.7	38.73
-------------------------------------	--	------	-------

Community Cohesion: 56.69

This component looks at the strength of social networks, community engagement, and the ability of residents to work together to address challenges and support one another during times of adversity. Rutherford County's performance on this dimension is average when compared to other North Carolina counties, ranking 53rd in the state.

Notable variables for Rutherford County within this dimension include:

VARIABLE STRENGTH	FACTOR	RUTHERFORD COUNTY VALUE	NC COUNTY AVERAGE VALUE
Strongest	Nonprofits Organizations per 1,000 Residents	3.91	3.17
2nd Strongest	Violent Crimes per 10,000 Residents	2.85	3.07
Weakest	Percentage of Inactive Voters	11.74%	11.3%

Socioeconomics: 32.63

This component considers factors such as income levels, poverty rates, and inequality, which can impact a community's ability to withstand and recover from economic shocks. Rutherford County's performance on this dimension is fairly weak when compared to other North Carolina counties, ranking 72nd in the state.

Notable variables for Rutherford County within this dimension include:

VARIABLE STRENGTH	FACTOR	RUTHERFORD COUNTY VALUE	NC COUNTY AVERAGE VALUE
Strongest	Percentage of Households Spending more than 30% Income on Housing	20.53%	24.53%
2nd Strongest	Percentage of Households with Income over \$200k	4.12%	5.28%
Weakest	Unemployment Rate (Q4)	4.7%	3.9%

Education: 48.97

This component evaluates the quality of educational institutions and the educational attainment levels of the local population, which play a crucial role in developing a skilled and adaptable workforce. Rutherford County's performance on this dimension is average when compared to other North Carolina counties, ranking 46th in the state.

Notable variables for Rutherford County within this dimension include:

VARIABLE STRENGTH	FACTOR	RUTHERFORD COUNTY VALUE	NC COUNTY AVERAGE VALUE
Strongest	Student to Teacher Ratio	13	14
2nd Strongest	Teacher Attrition Rate	0.1	0.12
Weakest	Postsecondary Enrollment Percentage	20.33%	25.48%

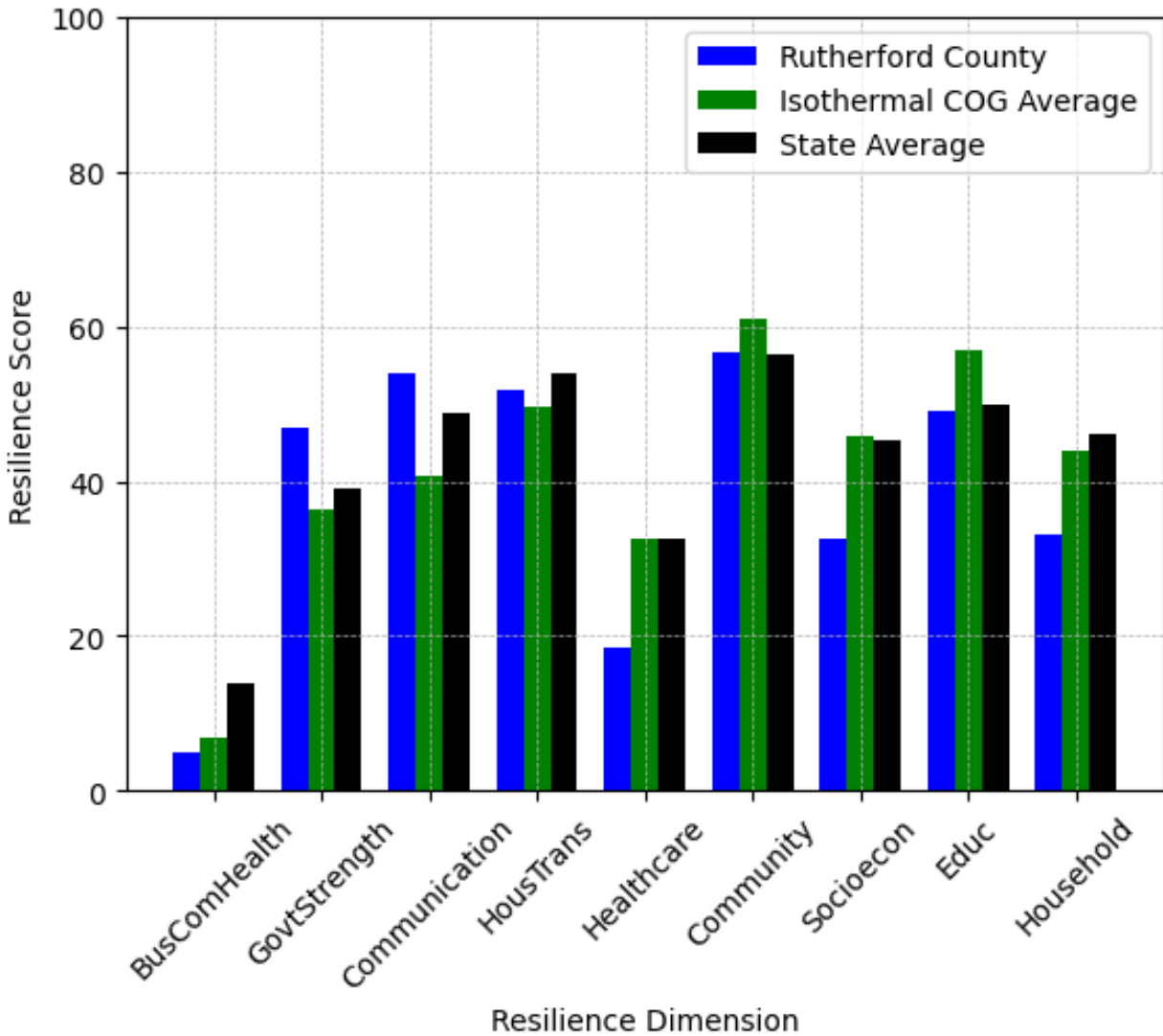
Household Characteristics: 33.23

This component examines factors such as the proportion of single-parent households, age distribution, and the proportion of individuals with disabilities, as these elements can influence a community's resilience and ability to recover from economic disruptions. Rutherford County's performance on this dimension is fairly weak when compared to other North Carolina counties, ranking 84th in the state.

Notable variables for Rutherford County within this dimension include:

VARIABLE STRENGTH	FACTOR	RUTHERFORD COUNTY VALUE	NC COUNTY AVERAGE VALUE
Strongest	Percentage of Population with Limited English Proficiency	0.62%	1.454%
2nd Strongest	Percentage of Population 17 and Younger	20.21%	20.37%
Bottom 10 in NC, Weakest	Percentage of Population with a Disability	21.17%	16.566%

Rutherford County's Resilience Dimension Scores Over Time As Compared to the Region and State Averages



Note: Resilience Scores are normalized from 1 to 100 with the most resilient county scoring 100. The Resilience Score is determined based on a county's performance relative to NC's other 99 counties.

Notable Trends in Resilience Indicators, 2017-2022

NOTE: The key trends in the this section are identified based on change rates of at least .15 standard deviations over at least 5 years. Variables are positively oriented such that a positive trend indicates improved performance (e.g., 'improvement' in property crime is a lower crime rate, while 'decline' in property crime indicates a higher crime rate).

Trends in the Business Community Health dimension:

Total Employment Level: **285** (5-year change rate = **1.57%**, from 18,212 to 18,497)

→ No change in rank

Average Weekly Wages: **196 dollars** (5-year change rate = **29.21%**, from 671 to 867)

↑ Change in rank from 81 to 73 in NC

Real GDP in Current Dollars: **49,863 dollars** (5-year change rate = **2.79%**, from 1,784,929 to 1,834,792)

↑ Change in rank from 51 to 50 in NC

Trends in the County Government Fiscal Strength dimension:

Adjusted Tax Base: **33,463 dollars** (5-year change rate = **36.76%**, from 91,034 to 124,497)

↑ Change in rank from 48 to 42 in NC

County Sales Tax: **6,806,578 dollars** (5-year change rate = **53.04%**, from 12,834,112 to 19,640,690)

↓ Change in rank from 41 to 44 in NC

Trends in the Housing & Transportation dimension:

Ratio of Average Estimated Home Value to Median Income : **1.91** (5-year change rate = **46.38%**, from 4.11 to 6.02)

↓ Change in rank from 39 to 40 in NC

Average Available Rent Money less the Average HUD Fair Market Rent: **243.4 dollars** (5-year change rate = **59.76%**, from 407.3 to 650.7)

↑ Change in rank from 77 to 71 in NC

Trends in the Healthcare dimension:

Opioid Deaths per 100,000 Residents: **29.6** (5-year change rate = **89.43%**, from 33.1 to 62.7)

↓ Change in rank from 76 to 92 in NC

Nurses per 10,000 Residents: **-41.54** (5-year change rate = **-16.63%**, from 249.72 to 208.18)

↓ Change in rank from 31 to 38 in NC

Mental Health Professionals per 10,000 Residents: **0.25** (5-year change rate = **4.17%**, from 5.99 to 6.24)

→ No change in rank

Trends in the Community Cohesion dimension:

Violent Crimes per 10,000 Residents: **0.59** (4-year change rate = **26.27%**, from 2.26 to 2.85)

↓ Change in rank from 52 to 56 in NC

Property Crimes per 10,000 Residents: **-8.62** (4-year change rate = **-34.77%**, from 24.8 to 16.17)

↑ Change in rank from 71 to 61 in NC

Nonprofits Organizations per 1,000 Residents: **1.57** (5-year change rate = **67.24%**, from 2.34 to 3.91)

↑ Change in rank from 68 to 28 in NC

Trends in the Socioeconomics dimension:

Unemployment Rate (Q4): **-1 percent** (5-year change rate = **-17.16%**, from 5.6 to 4.7)

↑ Change in rank from 86 to 83 in NC

Median Household Income: **11,400 dollars** (5-year change rate = **25.28%**, from 45,100 to 56,500)

→ No change in rank

Trends in the Education dimension:

Graduation Percentage: **5.8 percent** (5-year change rate = **6.96%**, from 83.3 to 89.1)

↑ Change in rank from 79 to 41 in NC

Dropout Rate: **-1.48 percent** (5-year change rate = **-42.7%**, from 3.46 to 1.98)

↑ Change in rank from 88 to 66 in NC

Student to Teacher Ratio: **-2** (4-year change rate = **-12.99%**, from 15 to 13)

↑ Change in rank from 55 to 24 in NC

3rd Grade Reading Proficiency: **-13.4 percent** (5-year change rate = **-22.95%**, from 58.4 to 45)

↓ Change in rank from 30 to 45 in NC

Data Advisements:

- Availability of Broadband Services is not available for 2022 and was excluded from calculating this county's dimension and resilience score.
- Adoption Rate of Broadband Services is not available for 2022 and was excluded from calculating this county's dimension and resilience score.