

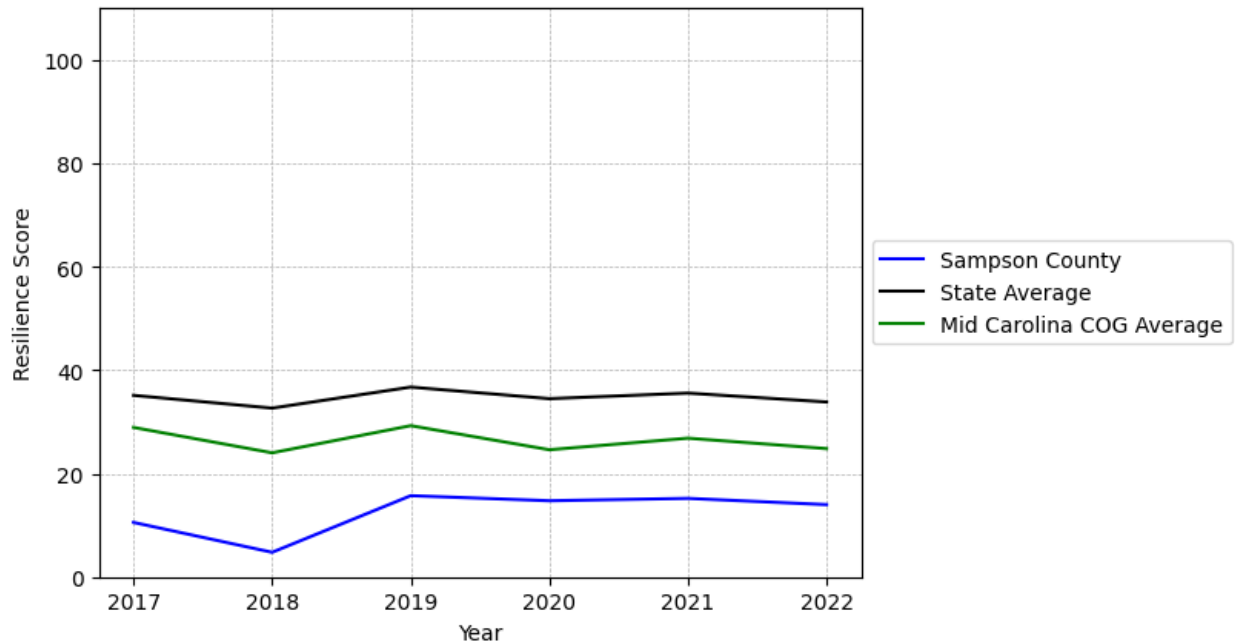
# Sampson County Summary

---

**Resilience Score: 13.99**

In 2022, Sampson County achieved a Resilience Score of 13.99, which is weak as compared to the North Carolina State average.

**Sampson County's Resilience Score Over Time  
As Compared to the Region and State Averages**



*Note: Resilience Scores are normalized from 1 to 100 with the most resilient county scoring 100. The Resilience Score is determined based on a county's performance relative to NC's other 99 counties.*

Sampson County's Resilience Score is comprised of 9 distinct dimensions of resilience. Below are Sampson County's scores for 2022 on those 9 dimensions, and their rank relative to other North Carolina counties.

### **Business Community Health: 7.13**

This component examines the strength and diversity of the local business community, including factors such as the number of businesses, employment levels, and industry diversity. Sampson County's performance on this dimension is fairly weak when compared to other North Carolina counties, ranking 77th in the state.

Notable variables for Sampson County within this dimension include:

<b>VARIABLE STRENGTH</b>	<b>FACTOR</b>	<b>SAMPSON COUNTY VALUE</b>	<b>NC COUNTY AVERAGE VALUE</b>
<b>Strongest</b>	Average Weekly Wages	\$962	\$951
<b>2nd Strongest</b>	Ratio of Available Child Care Slots to Number of Children under Five	0.62	0.59
<b>Bottom 10 in NC, Weakest</b>	Percentage of Companies in Science, Engineering, & Technology Industries	2.24%	6.13%

---

### **County Government Fiscal Strength: 19.78**

This component looks at the financial health of local governments, including their ability to generate revenue, manage debt, and maintain adequate reserves to weather economic downturns. Sampson County's performance on this dimension is weak when compared to other North Carolina counties, ranking 87th in the state.

Notable variables for Sampson County within this dimension include:

<b>VARIABLE STRENGTH</b>	<b>FACTOR</b>	<b>SAMPSON COUNTY VALUE</b>	<b>NC COUNTY AVERAGE VALUE</b>
<b>Strongest</b>	Capital Assets Condition Ratio of County Government	0.59	0.51
<b>2nd Strongest</b>	Dependency Ratio of County Government	0.15	0.16
<b>Bottom 10 in NC, Weakest</b>	Operations Ratio of County Government	0.98	1.11

---

### **Communication: 57.23**

This component assesses the availability and quality of communication infrastructure, such as broadband internet access, which is crucial for businesses and residents to stay connected and resilient during disruptions. Sampson County's performance on this dimension is average when compared to other North Carolina counties, ranking 35th in the state.

Notable variables for Sampson County within this dimension include:

VARIABLE STRENGTH	FACTOR	SAMPSON COUNTY VALUE	NC COUNTY AVERAGE VALUE
<b>Strongest</b>	Local High-Speed Mobile Data Availability	0.78	0.66
<b>2nd Strongest</b>	In-Vehicle High-Speed Mobile Data Availability	0.44	0.37
<b>Weakest</b>	Percentage of Population without Smartphones	19.21%	17.22%

### **Housing & Transportation: 45.36**

This component evaluates the accessibility and affordability of housing, as well as the availability of reliable transportation options, which are essential for a resilient workforce and economy. Sampson County's performance on this dimension is fairly weak when compared to other North Carolina counties, ranking 77th in the state.

Notable variables for Sampson County within this dimension include:

VARIABLE STRENGTH	FACTOR	SAMPSON COUNTY VALUE	NC COUNTY AVERAGE VALUE
<b>Strongest</b>	Percentage of People Driving Alone to Work	85.88%	86.36%
<b>2nd Strongest</b>	Percentage of Owner-Occupied Homes	60.98%	57.87%
<b>Bottom 10 in NC, Weakest</b>	Percentage of Households with More Residents than Rooms	4.13%	2.1%

### **Healthcare: 23.88**

The healthcare component examines the availability and quality of healthcare facilities, services, and professionals, which are critical for maintaining a healthy and productive workforce. Sampson County's performance on this dimension is average when compared to other North Carolina counties, ranking 61st in the state.

Notable variables for Sampson County within this dimension include:

VARIABLE STRENGTH	FACTOR	SAMPSON COUNTY VALUE	NC COUNTY AVERAGE VALUE
<b>Strongest</b>	Opioid Deaths per 100,000 Residents	25.2	38.73
<b>2nd Strongest</b>	Nursing Home Beds per	27.44	27.53

	1,000 Residents of Age 65+ Mental Health Professionals per 10,000 Residents	2.72	6.6
<b>Weakest</b>			

### Community Cohesion: 56

This component looks at the strength of social networks, community engagement, and the ability of residents to work together to address challenges and support one another during times of adversity. Sampson County's performance on this dimension is average when compared to other North Carolina counties, ranking 54th in the state.

Notable variables for Sampson County within this dimension include:

VARIABLE STRENGTH	FACTOR	SAMPSON COUNTY VALUE	NC COUNTY AVERAGE VALUE
<b>Strongest</b>	Percentage of Inactive Voters	9.92%	11.3%
<b>2nd Strongest</b>	Yearly Population Change Percentage	1.04%	0.906%
<b>Weakest</b>	Violent Crimes per 10,000 Residents	3.48	3.07

### Socioeconomics: 25.75

This component considers factors such as income levels, poverty rates, and inequality, which can impact a community's ability to withstand and recover from economic shocks. Sampson County's performance on this dimension is fairly weak when compared to other North Carolina counties, ranking 80th in the state.

Notable variables for Sampson County within this dimension include:

VARIABLE STRENGTH	FACTOR	SAMPSON COUNTY VALUE	NC COUNTY AVERAGE VALUE
<b>Strongest</b>	Unemployment Rate (Q4)	3.5%	3.9%
<b>2nd Strongest</b>	Percentage of Households Spending more than 30% Income on Housing	24.23%	24.53%
<b>Bottom 10 in NC, Weakest</b>	Percentage of Population without Health Insurance	15.76%	11.23%

---

### Education: 30.84

This component evaluates the quality of educational institutions and the educational attainment levels of the local population, which play a crucial role in developing a skilled and adaptable workforce. Sampson County's performance on this dimension is fairly weak when compared to other North Carolina counties, ranking 78th in the state.

Notable variables for Sampson County within this dimension include:

VARIABLE STRENGTH	FACTOR	SAMPSON COUNTY VALUE	NC COUNTY AVERAGE VALUE
Strongest	Teacher Attrition Rate	0.1	0.12
2nd Strongest	Postsecondary Enrollment Percentage	23.5%	25.48%
Bottom 10 in NC	Graduation Percentage	81.2%	88.03%
Bottom 10 in NC, Weakest	Local LEA Financial Resources (per ADM)	\$3,428	\$8,683

---

### Household Characteristics: 22.87

This component examines factors such as the proportion of single-parent households, age distribution, and the proportion of individuals with disabilities, as these elements can influence a community's resilience and ability to recover from economic disruptions. Sampson County's performance on this dimension is weak when compared to other North Carolina counties, ranking 93rd in the state.

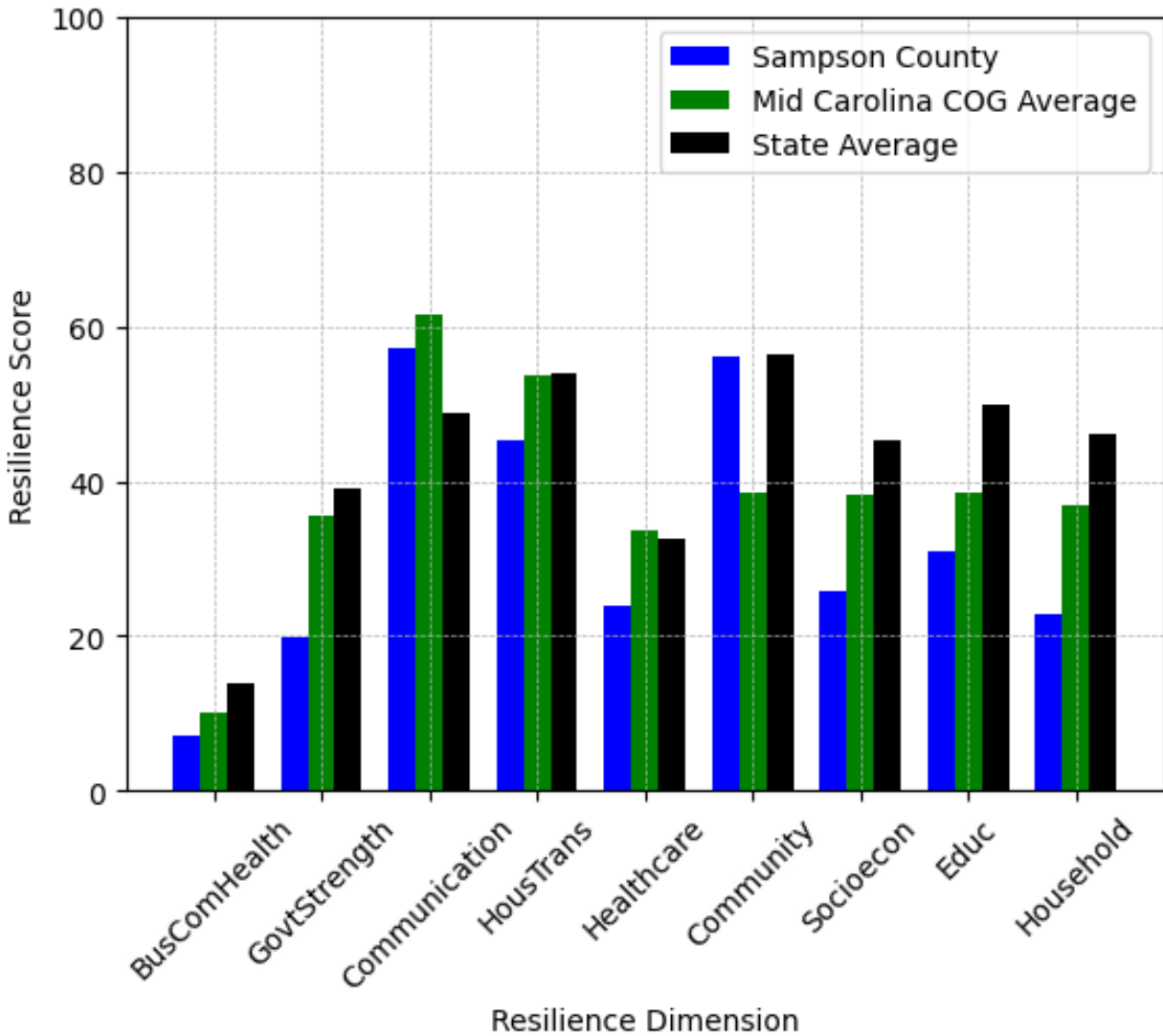
Notable variables for Sampson County within this dimension include:

VARIABLE STRENGTH	FACTOR	SAMPSON COUNTY VALUE	NC COUNTY AVERAGE VALUE
Strongest	Percentage of Population with a Disability	14.102%	16.566%
2nd Strongest	Percentage of Population 65 and Older	18.1%	20.53%
Bottom 10 in NC	Percentage of Population 17 and Younger	24.23%	20.37%
Bottom 10 in NC, Weakest	Percentage of Population with Limited English Proficiency	4.23%	1.454%

---



## Sampson County's Resilience Dimension Scores Over Time As Compared to the Region and State Averages



*Note: Resilience Scores are normalized from 1 to 100 with the most resilient county scoring 100. The Resilience Score is determined based on a county's performance relative to NC's other 99 counties.*

## **Notable Trends in Resilience Indicators, 2017-2022**

*NOTE: The key trends in the this section are identified based on change rates of at least .15 standard deviations over at least 5 years. Variables are positively oriented such that a positive trend indicates improved performance (e.g., 'improvement' in property crime is a lower crime rate, while 'decline' in property crime indicates a higher crime rate).*

### **Trends in the Business Community Health dimension:**

Total Employment Level: **-356** (5-year change rate = **-1.94%**, from 18,347 to 17,991)

↓ Change in rank from 45 to 47 in NC

Average Weekly Wages: **207 dollars** (5-year change rate = **27.42%**, from 755 to 962)

↓ Change in rank from 33 to 36 in NC

Real GDP in Current Dollars: **-231,729 dollars** (5-year change rate = **-11.4%**, from 2,033,558 to 1,801,829)

↓ Change in rank from 46 to 51 in NC

### **Trends in the County Government Fiscal Strength dimension:**

Adjusted Tax Base: **17,205 dollars** (5-year change rate = **25.66%**, from 67,056 to 84,261)

↑ Change in rank from 87 to 79 in NC

County Sales Tax: **4,151,948 dollars** (5-year change rate = **35.06%**, from 11,842,758 to 15,994,706)

↓ Change in rank from 44 to 50 in NC

### **Trends in the Housing & Transportation dimension:**

Ratio of Average Estimated Home Value to Median Income : **1.71** (5-year change rate = **45.61%**, from 3.74 to 5.45)

↓ Change in rank from 31 to 36 in NC

Average Available Rent Money less the Average HUD Fair Market Rent: **270.6 dollars** (5-year change rate = **65.6%**, from 412.5 to 683.1)

↑ Change in rank from 76 to 64 in NC



**Trends in the Healthcare dimension:**

Opioid Deaths per 100,000 Residents: **9.4** (5-year change rate = **59.49%**, from 15.8 to 25.2)

→ No change in rank

Nurses per 10,000 Residents: **-30.65** (5-year change rate = **-16.83%**, from 182.13 to 151.48)

↓ Change in rank from 48 to 54 in NC

Physicians per 10,000 Residents: **-1.65** (5-year change rate = **-16.02%**, from 10.3 to 8.65)

↓ Change in rank from 56 to 64 in NC

Mental Health Professionals per 10,000 Residents: **0.4** (5-year change rate = **17.24%**, from 2.32 to 2.72)

↑ Change in rank from 93 to 88 in NC

**Trends in the Community Cohesion dimension:**

Violent Crimes per 10,000 Residents: **0.34** (4-year change rate = **10.68%**, from 3.14 to 3.48)

↑ Change in rank from 70 to 69 in NC

Property Crimes per 10,000 Residents: **-5.06** (4-year change rate = **-23.08%**, from 21.93 to 16.87)

↓ Change in rank from 61 to 64 in NC

**Trends in the Socioeconomics dimension:**

Unemployment Rate (Q4): **-0.9 percent** (5-year change rate = **-20.61%**, from 4.4 to 3.5)

↑ Change in rank from 56 to 43 in NC

Median Household Income: **14,000 dollars** (5-year change rate = **31.6%**, from 44,300 to 58,300)

↑ Change in rank from 88 to 75 in NC

**Trends in the Education dimension:**

Graduation Percentage: **-5.25 percent** (5-year change rate = **-6.07%**, from 86.45 to 81.2)

↓ Change in rank from 55 to 93 in NC

Dropout Rate: **-1.63 percent** (5-year change rate = **-43.48%**, from 3.76 to 2.12)

↑ Change in rank from 95 to 72 in NC

Student to Teacher Ratio: **-1** (4-year change rate = **-4.98%**, from 15 to 15)

↑ Change in rank from 66 to 64 in NC

3rd Grade Reading Proficiency: **-17.88 percent** (5-year change rate = **-31.02%**, from 57.65 to 39.77)

↓ Change in rank from 36 to 65 in NC

**Data Advisements:**

- Availability of Broadband Services is not available for 2022 and was excluded from calculating this county's dimension and resilience score.
- Adoption Rate of Broadband Services is not available for 2022 and was excluded from calculating this county's dimension and resilience score.