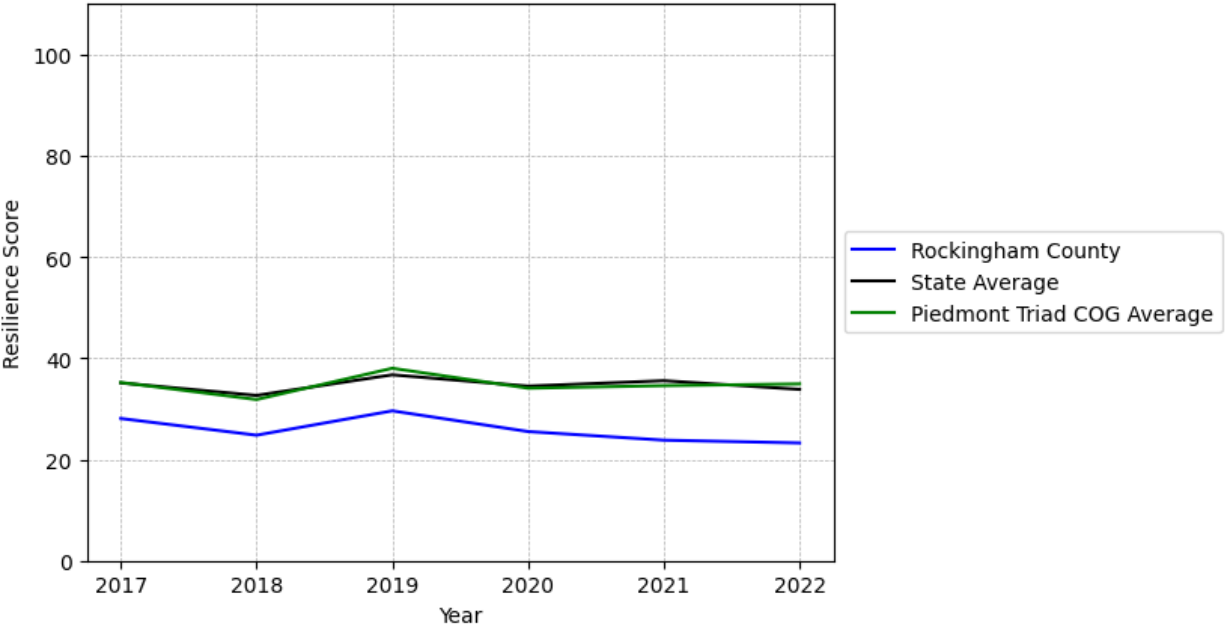


# Rockingham County Summary

**Resilience Score: 23.26**

In 2022, Rockingham County achieved a Resilience Score of 23.26, which is fairly weak as compared to the North Carolina State average.

**Rockingham County's Resilience Score Over Time  
As Compared to the Region and State Averages**



*Note: Resilience Scores are normalized from 1 to 100 with the most resilient county scoring 100. The Resilience Score is determined based on a county's performance relative to NC's other 99 counties.*

Rockingham County's Resilience Score is comprised of 9 distinct dimensions of resilience. Below are Rockingham County's scores for 2022 on those 9 dimensions, and their rank relative to other North Carolina counties.

### **Business Community Health: 4.58**

This component examines the strength and diversity of the local business community, including factors such as the number of businesses, employment levels, and industry diversity. Rockingham County's performance on this dimension is fairly weak when compared to other North Carolina counties, ranking 91st in the state.

Notable variables for Rockingham County within this dimension include:

<b>VARIABLE STRENGTH</b>	<b>FACTOR</b>	<b>ROCKINGHAM COUNTY VALUE</b>	<b>NC COUNTY AVERAGE VALUE</b>
<b>Strongest</b>	Real GDP in Current Dollars	\$2,796,1	\$6,092,555
<b>2nd Strongest</b>	Total Employment Level	24,856	45,758
<b>Weakest</b>	Percentage of Companies in Science, Engineering, & Technology Industries	3.54%	6.13%

---

### **County Government Fiscal Strength: 49.91**

This component looks at the financial health of local governments, including their ability to generate revenue, manage debt, and maintain adequate reserves to weather economic downturns. Rockingham County's performance on this dimension is average when compared to other North Carolina counties, ranking 36th in the state.

Notable variables for Rockingham County within this dimension include:

<b>VARIABLE STRENGTH</b>	<b>FACTOR</b>	<b>ROCKINGHAM COUNTY VALUE</b>	<b>NC COUNTY AVERAGE VALUE</b>
<b>Top 10 in NC, Strongest</b>	Debt Service Ratio of County Government	0.01	0.07
<b>2nd Strongest</b>	Solvency Ratio of County Government	60.32	46.7
<b>Weakest</b>	Adjusted Tax Base	\$83,587	\$124,092

---

### **Communication: 45.78**

This component assesses the availability and quality of communication infrastructure, such as broadband internet access, which is crucial for businesses and residents to stay connected and resilient during disruptions. Rockingham County's performance on this dimension is average when compared to other North Carolina counties, ranking 61st in the state.

Notable variables for Rockingham County within this dimension include:

VARIABLE STRENGTH	FACTOR	ROCKINGHAM COUNTY VALUE	NC COUNTY AVERAGE VALUE
<b>Strongest</b>	In-Vehicle High-Speed Mobile Data Availability	0.39	0.37
<b>2nd Strongest</b>	Local High-Speed Mobile Data Availability	0.73	0.66
<b>Bottom 10 in NC, Weakest</b>	Percentage of Population without Smartphones	23.68%	17.22%

### Housing & Transportation: 54.52

This component evaluates the accessibility and affordability of housing, as well as the availability of reliable transportation options, which are essential for a resilient workforce and economy.

Rockingham County's performance on this dimension is average when compared to other North Carolina counties, ranking 58th in the state.

Notable variables for Rockingham County within this dimension include:

VARIABLE STRENGTH	FACTOR	ROCKINGHAM COUNTY VALUE	NC COUNTY AVERAGE VALUE
<b>Strongest</b>	Ratio of Average Estimated Home Value to Median Income	3.69	13.67
<b>2nd Strongest</b>	Percentage of Owner-Occupied Homes	63.36%	57.87%
<b>Weakest</b>	Percentage of Homes Built Before 1980	52.87%	40.9%

### Healthcare: 13.23

The healthcare component examines the availability and quality of healthcare facilities, services, and professionals, which are critical for maintaining a healthy and productive workforce.

Rockingham County's performance on this dimension is weak when compared to other North Carolina counties, ranking 92nd in the state.

Notable variables for Rockingham County within this dimension include:

VARIABLE STRENGTH	FACTOR	ROCKINGHAM COUNTY VALUE	NC COUNTY AVERAGE VALUE
<b>Strongest</b>	Nurses per 10,000 Residents	222.72	262.64
<b>2nd Strongest</b>	Physicians per 10,000 Residents	9.57	16.05
<b>Bottom 10 in NC,</b>	Opioid Deaths per	63.7	38.73

<b>Weakest</b>	100,000 Residents
----------------	-------------------

### Community Cohesion: 54.73

This component looks at the strength of social networks, community engagement, and the ability of residents to work together to address challenges and support one another during times of adversity. Rockingham County's performance on this dimension is average when compared to other North Carolina counties, ranking 56th in the state.

Notable variables for Rockingham County within this dimension include:

<b>VARIABLE STRENGTH</b>	<b>FACTOR</b>	<b>ROCKINGHAM COUNTY VALUE</b>	<b>NC COUNTY AVERAGE VALUE</b>
<b>Strongest</b>	Percentage of Inactive Voters	9.56%	11.3%
<b>2nd Strongest</b>	Yearly Population Change Percentage	1.318%	0.906%
<b>Weakest</b>	Nonprofits Organizations per 1,000 Residents	1.83	3.17

### Socioeconomics: 31.08

This component considers factors such as income levels, poverty rates, and inequality, which can impact a community's ability to withstand and recover from economic shocks. Rockingham County's performance on this dimension is fairly weak when compared to other North Carolina counties, ranking 75th in the state.

Notable variables for Rockingham County within this dimension include:

<b>VARIABLE STRENGTH</b>	<b>FACTOR</b>	<b>ROCKINGHAM COUNTY VALUE</b>	<b>NC COUNTY AVERAGE VALUE</b>
<b>Strongest</b>	Percentage of Population without Health Insurance	9.96%	11.23%
<b>2nd Strongest</b>	Gini Coefficient (Income Inequality)	0.46	0.46
<b>Weakest</b>	Median Household Income	\$55,5	\$70,088

**Education: 44.54**

This component evaluates the quality of educational institutions and the educational attainment levels of the local population, which play a crucial role in developing a skilled and adaptable workforce. Rockingham County's performance on this dimension is average when compared to other North Carolina counties, ranking 56th in the state.

Notable variables for Rockingham County within this dimension include:

<b>VARIABLE STRENGTH</b>	<b>FACTOR</b>	<b>ROCKINGHAM COUNTY VALUE</b>	<b>NC COUNTY AVERAGE VALUE</b>
<b>Strongest</b>	Teacher Attrition Rate	0.08	0.12
<b>2nd Strongest</b>	Dropout Rate	0.8%	1.65%
<b>Weakest</b>	3rd Grade Reading Proficiency	32.7%	43.1%

---

**Household Characteristics: 43.07**

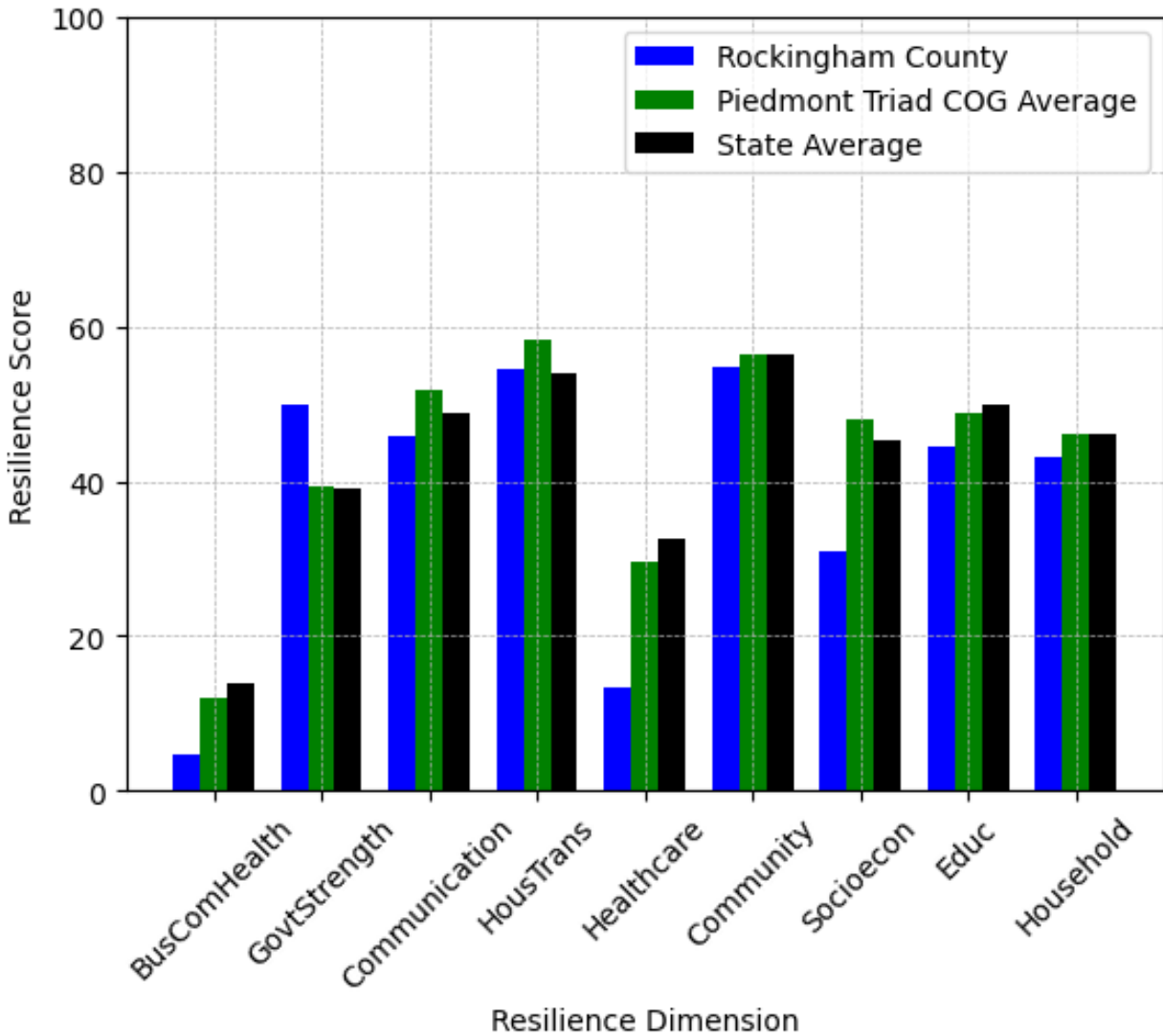
This component examines factors such as the proportion of single-parent households, age distribution, and the proportion of individuals with disabilities, as these elements can influence a community's resilience and ability to recover from economic disruptions. Rockingham County's performance on this dimension is average when compared to other North Carolina counties, ranking 59th in the state.

Notable variables for Rockingham County within this dimension include:

<b>VARIABLE STRENGTH</b>	<b>FACTOR</b>	<b>ROCKINGHAM COUNTY VALUE</b>	<b>NC COUNTY AVERAGE VALUE</b>
<b>Strongest</b>	Percentage of Population 17 and Younger	20.08%	20.37%
<b>2nd Strongest</b>	Percentage of Population with Limited English Proficiency	1.298%	1.454%
<b>Weakest</b>	Percentage of Population with a Disability	17.565%	16.566%

---

## Rockingham County's Resilience Dimension Scores Over Time As Compared to the Region and State Averages



*Note: Resilience Scores are normalized from 1 to 100 with the most resilient county scoring 100. The Resilience Score is determined based on a county's performance relative to NC's other 99 counties.*

## **Notable Trends in Resilience Indicators, 2017-2022**

*NOTE: The key trends in the this section are identified based on change rates of at least .15 standard deviations over at least 5 years. Variables are positively oriented such that a positive trend indicates improved performance (e.g., 'improvement' in property crime is a lower crime rate, while 'decline' in property crime indicates a higher crime rate).*

### **Trends in the Business Community Health dimension:**

Total Employment Level: **-650** (5-year change rate = **-2.55%**, from 25,506 to 24,856)

↓ Change in rank from 36 to 39 in NC

Average Weekly Wages: **165 dollars** (5-year change rate = **23.78%**, from 694 to 859)

↓ Change in rank from 65 to 78 in NC

Real GDP in Current Dollars: **-248,975 dollars** (5-year change rate = **-8.18%**, from 3,045,075 to 2,796,100)

↓ Change in rank from 33 to 35 in NC

### **Trends in the County Government Fiscal Strength dimension:**

Adjusted Tax Base: **8,866 dollars** (5-year change rate = **11.87%**, from 74,721 to 83,587)

↓ Change in rank from 69 to 81 in NC

County Sales Tax: **9,879,233 dollars** (5-year change rate = **72.25%**, from 13,672,741 to 23,551,974)

↑ Change in rank from 40 to 35 in NC

### **Trends in the Housing & Transportation dimension:**

Ratio of Average Estimated Home Value to Median Income : **0.74** (5-year change rate = **25.17%**, from 2.95 to 3.69)

↑ Change in rank from 24 to 22 in NC

Average Available Rent Money less the Average HUD Fair Market Rent: **32.2 dollars** (5-year change rate = **5.89%**, from 547.1 to 579.3)

↓ Change in rank from 44 to 77 in NC

**Trends in the Healthcare dimension:**

Opioid Deaths per 100,000 Residents: **35.1** (5-year change rate = **122.73%**, from 28.6 to 63.7)

↓ Change in rank from 64 to 94 in NC

Nurses per 10,000 Residents: **-8.09** (5-year change rate = **-3.51%**, from 230.81 to 222.72)

↑ Change in rank from 38 to 36 in NC

Physicians per 10,000 Residents: **-1.25** (5-year change rate = **-11.55%**, from 10.82 to 9.57)

↓ Change in rank from 53 to 60 in NC

Mental Health Professionals per 10,000 Residents: **-0.72** (5-year change rate = **-15.16%**, from 4.75 to 4.03)

↓ Change in rank from 61 to 76 in NC

**Trends in the Community Cohesion dimension:**

Violent Crimes per 10,000 Residents: **0.48** (4-year change rate = **18.93%**, from 2.51 to 2.99)

↑ Change in rank from 62 to 61 in NC

Property Crimes per 10,000 Residents: **-4.11** (4-year change rate = **-17.49%**, from 23.49 to 19.38)

↓ Change in rank from 67 to 73 in NC

Nonprofits Organizations per 1,000 Residents: **0.42** (5-year change rate = **29.45%**, from 1.41 to 1.83)

↑ Change in rank from 88 to 81 in NC



### **Trends in the Socioeconomics dimension:**

Unemployment Rate (Q4): **-0.8 percent** (5-year change rate = **-15.65%**, from 4.9 to 4.1)

↓ Change in rank from 72 to 74 in NC

Median Household Income: **7,000 dollars** (5-year change rate = **14.43%**, from 48,500 to 55,500)

↓ Change in rank from 68 to 85 in NC

### **Trends in the Education dimension:**

Graduation Percentage: **6 percent** (5-year change rate = **7.27%**, from 82.5 to 88.5)

↑ Change in rank from 86 to 48 in NC

Dropout Rate: **-1.36 percent** (5-year change rate = **-62.87%**, from 2.16 to 0.8)

↑ Change in rank from 47 to 18 in NC

Student to Teacher Ratio: **-1** (4-year change rate = **-6.94%**, from 16 to 15)

↑ Change in rank from 88 to 78 in NC

3rd Grade Reading Proficiency: **-15.8 percent** (5-year change rate = **-32.58%**, from 48.5 to 32.7)

↓ Change in rank from 76 to 85 in NC

### **Data Advisements:**

- Availability of Broadband Services is not available for 2022 and was excluded from calculating this county's dimension and resilience score.
- Adoption Rate of Broadband Services is not available for 2022 and was excluded from calculating this county's dimension and resilience score.