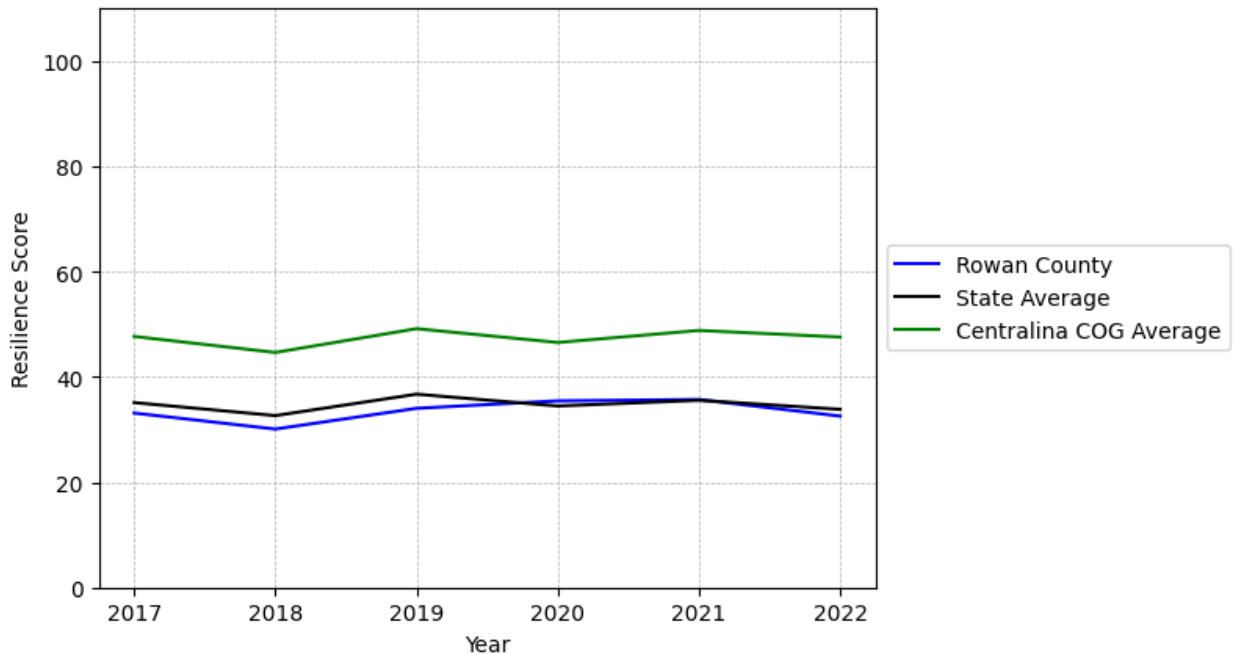


Rowan County Summary

Resilience Score: 32.55

In 2022, Rowan County achieved a Resilience Score of 32.55, which is average as compared to the North Carolina State average.

**Rowan County's Resilience Score Over Time
As Compared to the Region and State Averages**



Note: Resilience Scores are normalized from 1 to 100 with the most resilient county scoring 100. The Resilience Score is determined based on a county's performance relative to NC's other 99 counties.

Rowan County's Resilience Score is comprised of 9 distinct dimensions of resilience. Below are Rowan County's scores for 2022 on those 9 dimensions, and their rank relative to other North Carolina counties.

Business Community Health: 10.22

This component examines the strength and diversity of the local business community, including factors such as the number of businesses, employment levels, and industry diversity. Rowan County's performance on this dimension is average when compared to other North Carolina counties, ranking 55th in the state.

Notable variables for Rowan County within this dimension include:

VARIABLE STRENGTH	FACTOR	ROWAN COUNTY VALUE	NC COUNTY AVERAGE VALUE
Strongest	Science, Engineering, & Technology Industries Employment Percentage	2.51%	1.79%
2nd Strongest	Average Weekly Wages	\$1,043	\$951
Weakest	Ratio of Available Child Care Slots to Number of Children under Five	0.37	0.59

County Government Fiscal Strength: 34.64

This component looks at the financial health of local governments, including their ability to generate revenue, manage debt, and maintain adequate reserves to weather economic downturns. Rowan County's performance on this dimension is average when compared to other North Carolina counties, ranking 64th in the state.

Notable variables for Rowan County within this dimension include:

VARIABLE STRENGTH	FACTOR	ROWAN COUNTY VALUE	NC COUNTY AVERAGE VALUE
Strongest	County Sales Tax	\$36,632,168	\$31,151,902
2nd Strongest	Operations Ratio of County Government	1.16	1.11
Bottom 10 in NC, Weakest	Capital Assets Condition Ratio of County Government	0.37	0.51

Communication: 76.62

This component assesses the availability and quality of communication infrastructure, such as broadband internet access, which is crucial for businesses and residents to stay connected and resilient during disruptions. Rowan County's performance on this dimension is strong when compared to other North Carolina counties, ranking 13th in the state.

Notable variables for Rowan County within this dimension include:

VARIABLE STRENGTH	FACTOR	ROWAN COUNTY VALUE	NC COUNTY AVERAGE VALUE
Top 10 in NC, Strongest	Local High-Speed Mobile Data Availability	0.93	0.66
Top 10 in NC, 2nd Strongest	In-Vehicle High-Speed Mobile Data Availability	0.69	0.37
Weakest	Percentage of Population without Smartphones	15.12%	17.22%

Housing & Transportation: 58.98

This component evaluates the accessibility and affordability of housing, as well as the availability of reliable transportation options, which are essential for a resilient workforce and economy. Rowan County's performance on this dimension is average when compared to other North Carolina counties, ranking 49th in the state.

Notable variables for Rowan County within this dimension include:

VARIABLE STRENGTH	FACTOR	ROWAN COUNTY VALUE	NC COUNTY AVERAGE VALUE
Strongest	Ratio of Average Estimated Home Value to Median Income	3.31	13.67
2nd Strongest	Percentage of Owner-Occupied Homes	63.07%	57.87%
Weakest	Percentage of Households with More Residents than Rooms	2.72%	2.1%

Healthcare: 29.08

The healthcare component examines the availability and quality of healthcare facilities, services, and professionals, which are critical for maintaining a healthy and productive workforce. Rowan County's performance on this dimension is average when compared to other North Carolina counties, ranking 40th in the state.

Notable variables for Rowan County within this dimension include:

VARIABLE STRENGTH	FACTOR	ROWAN COUNTY VALUE	NC COUNTY AVERAGE VALUE
Top 10 in NC, Strongest	Mental Health Professionals per 10,000	10.29	6.6

	Residents		
2nd Strongest	Nurses per 10,000 Residents	373.54	262.64
Bottom 10 in NC, Weakest	Opioid Deaths per 100,000 Residents	62.6	38.73

Community Cohesion: 60.59

This component looks at the strength of social networks, community engagement, and the ability of residents to work together to address challenges and support one another during times of adversity. Rowan County's performance on this dimension is average when compared to other North Carolina counties, ranking 45th in the state.

Notable variables for Rowan County within this dimension include:

VARIABLE STRENGTH	FACTOR	ROWAN COUNTY VALUE	NC COUNTY AVERAGE VALUE
Strongest	Yearly Population Change Percentage	1.447%	0.906%
2nd Strongest	Nonprofits Organizations per 1,000 Residents	3.79	3.17
Weakest	Violent Crimes per 10,000 Residents	3.45	3.07

Socioeconomics: 48.61

This component considers factors such as income levels, poverty rates, and inequality, which can impact a community's ability to withstand and recover from economic shocks. Rowan County's performance on this dimension is average when compared to other North Carolina counties, ranking 43rd in the state.

Notable variables for Rowan County within this dimension include:

VARIABLE STRENGTH	FACTOR	ROWAN COUNTY VALUE	NC COUNTY AVERAGE VALUE
Strongest	Percentage of Households with Income over \$200k	5.2%	5.28%
2nd Strongest	Unemployment Rate (Q4)	3.5%	3.9%
Weakest	Total Percentage of Population Below 150% Poverty Line	26.09%	25.93%

Education: 35.77

This component evaluates the quality of educational institutions and the educational attainment levels of the local population, which play a crucial role in developing a skilled and adaptable workforce. Rowan County's performance on this dimension is fairly weak when compared to other North Carolina counties, ranking 71st in the state.

Notable variables for Rowan County within this dimension include:

VARIABLE STRENGTH	FACTOR	ROWAN COUNTY VALUE	NC COUNTY AVERAGE VALUE
Strongest	Dropout Rate	1.22%	1.65%
2nd Strongest	Local LEA Financial Resources (per ADM)	\$6,451	\$8,683
Weakest	Teacher Attrition Rate	0.14	0.12

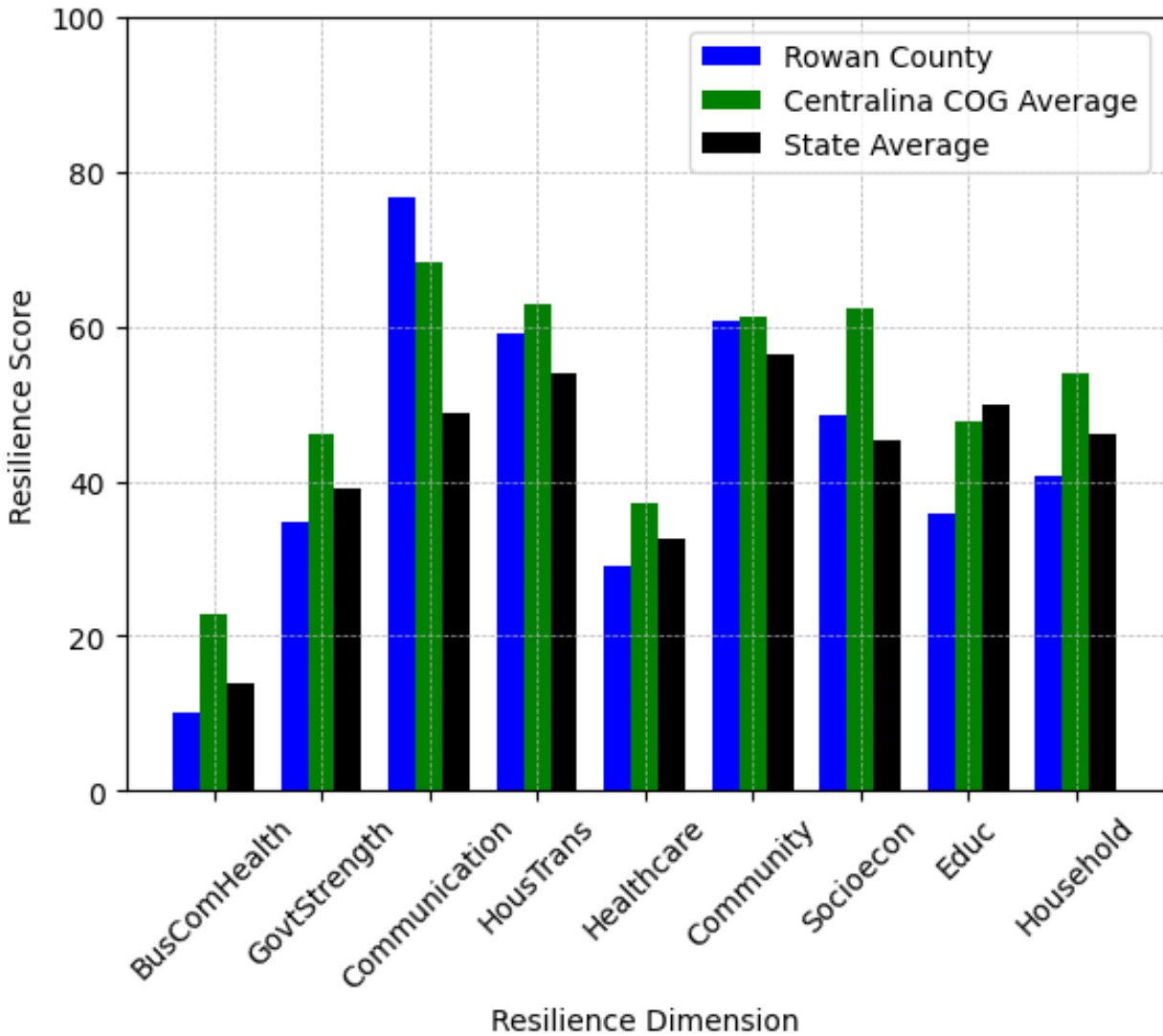
Household Characteristics: 40.71

This component examines factors such as the proportion of single-parent households, age distribution, and the proportion of individuals with disabilities, as these elements can influence a community's resilience and ability to recover from economic disruptions. Rowan County's performance on this dimension is average when compared to other North Carolina counties, ranking 67th in the state.

Notable variables for Rowan County within this dimension include:

VARIABLE STRENGTH	FACTOR	ROWAN COUNTY VALUE	NC COUNTY AVERAGE VALUE
Strongest	Percentage of Population 65 and Older	17.7%	20.53%
2nd Strongest	Percentage of Population with a Disability	15.501%	16.566%
Weakest	Percentage of Population with Limited English Proficiency	2.312%	1.454%

Rowan County's Resilience Dimension Scores Over Time As Compared to the Region and State Averages



Note: Resilience Scores are normalized from 1 to 100 with the most resilient county scoring 100. The Resilience Score is determined based on a county's performance relative to NC's other 99 counties.

Notable Trends in Resilience Indicators, 2017-2022

NOTE: The key trends in the this section are identified based on change rates of at least .15 standard deviations over at least 5 years. Variables are positively oriented such that a positive trend indicates improved performance (e.g., 'improvement' in property crime is a lower crime rate, while 'decline' in property crime indicates a higher crime rate).

Trends in the Business Community Health dimension:

Total Employment Level: **2,213** (5-year change rate = **4.57%**, from 48,428 to 50,641)

↓ Change in rank from 18 to 19 in NC

Average Weekly Wages: **188 dollars** (5-year change rate = **21.99%**, from 855 to 1,043)

↓ Change in rank from 12 to 16 in NC

Real GDP in Current Dollars: **631,013 dollars** (5-year change rate = **12.18%**, from 5,178,922 to 5,809,935)

↑ Change in rank from 20 to 19 in NC

Trends in the County Government Fiscal Strength dimension:

Adjusted Tax Base: **12,927 dollars** (5-year change rate = **15.85%**, from 81,541 to 94,468)

↓ Change in rank from 53 to 61 in NC

County Sales Tax: **12,646,774 dollars** (5-year change rate = **52.73%**, from 23,985,394 to 36,632,168)

↑ Change in rank from 24 to 22 in NC

Trends in the Housing & Transportation dimension:

Ratio of Average Estimated Home Value to Median Income : **0.79** (5-year change rate = **31.41%**, from 2.52 to 3.31)

→ No change in rank

Average Available Rent Money less the Average HUD Fair Market Rent: **156 dollars** (5-year change rate = **23.38%**, from 667.1 to 823.1)

↓ Change in rank from 21 to 44 in NC

Trends in the Healthcare dimension:

Opioid Deaths per 100,000 Residents: **11.4** (5-year change rate = **22.27%**, from 51.2 to 62.6)

↑ Change in rank from 98 to 91 in NC

Nurses per 10,000 Residents: **-65.54** (5-year change rate = **-14.93%**, from 439.08 to 373.54)

↓ Change in rank from 13 to 14 in NC

Physicians per 10,000 Residents: **-0.34** (5-year change rate = **-2.78%**, from 12.24 to 11.9)

↓ Change in rank from 48 to 53 in NC

Mental Health Professionals per 10,000 Residents: **0.97** (5-year change rate = **10.41%**, from 9.32 to 10.29)

↑ Change in rank from 12 to 11 in NC

Trends in the Community Cohesion dimension:

Violent Crimes per 10,000 Residents: **0.79** (4-year change rate = **29.74%**, from 2.66 to 3.45)

→ No change in rank

Property Crimes per 10,000 Residents: **-3.66** (4-year change rate = **-18.85%**, from 19.4 to 15.75)

↓ Change in rank from 51 to 57 in NC

Trends in the Socioeconomics dimension:

Unemployment Rate (Q4): **-0.9 percent** (5-year change rate = **-21.21%**, from 4.4 to 3.5)

↑ Change in rank from 58 to 40 in NC

Median Household Income: **13,600 dollars** (5-year change rate = **24.16%**, from 56,300 to 69,900)

↓ Change in rank from 35 to 43 in NC

Trends in the Education dimension:

Graduation Percentage: **2.2 percent** (5-year change rate = **2.59%**, from 85 to 87.2)

↑ Change in rank from 67 to 66 in NC

Dropout Rate: **-2.09 percent** (5-year change rate = **-63.22%**, from 3.31 to 1.22)

↑ Change in rank from 87 to 30 in NC

3rd Grade Reading Proficiency: **-11.5 percent** (5-year change rate = **-24.42%**, from 47.1 to 35.6)

↑ Change in rank from 82 to 77 in NC

Data Advisements:

- Availability of Broadband Services is not available for 2022 and was excluded from calculating this county's dimension and resilience score.
- Adoption Rate of Broadband Services is not available for 2022 and was excluded from calculating this county's dimension and resilience score.