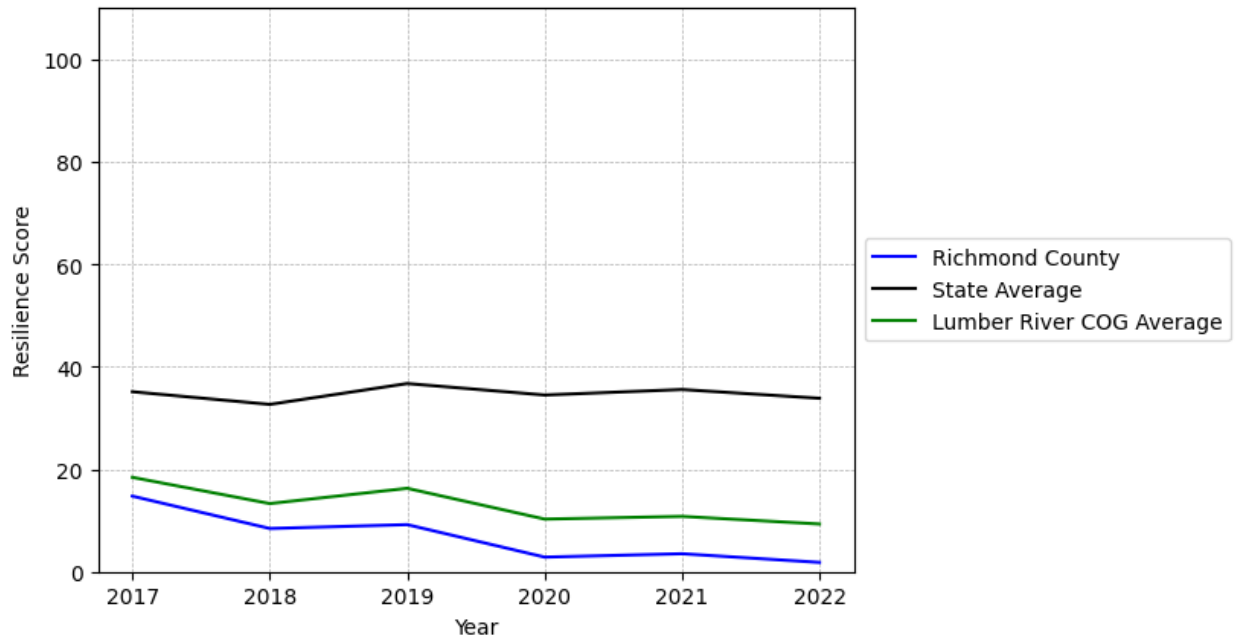


Richmond County Summary

Resilience Score: 1.82

In 2022, Richmond County achieved a Resilience Score of 1.82, which is weak as compared to the North Carolina State average.

**Richmond County's Resilience Score Over Time
As Compared to the Region and State Averages**



Note: Resilience Scores are normalized from 1 to 100 with the most resilient county scoring 100. The Resilience Score is determined based on a county's performance relative to NC's other 99 counties.

Richmond County's Resilience Score is comprised of 9 distinct dimensions of resilience. Below are Richmond County's scores for 2022 on those 9 dimensions, and their rank relative to other North Carolina counties.

Business Community Health: 4.94

This component examines the strength and diversity of the local business community, including factors such as the number of businesses, employment levels, and industry diversity. Richmond County's performance on this dimension is fairly weak when compared to other North Carolina counties, ranking 89th in the state.

Notable variables for Richmond County within this dimension include:

VARIABLE STRENGTH	FACTOR	RICHMOND COUNTY VALUE	NC COUNTY AVERAGE VALUE
Strongest	Private Sector Diversity	0.303	0.28
2nd Strongest	Real GDP in Current Dollars	\$2,002,769	\$6,092,555
Bottom 10 in NC, Weakest	Percentage of Companies in Science, Engineering, & Technology Industries	2.62%	6.13%

County Government Fiscal Strength: 4.94

This component looks at the financial health of local governments, including their ability to generate revenue, manage debt, and maintain adequate reserves to weather economic downturns. Richmond County's performance on this dimension is weak when compared to other North Carolina counties, ranking 98th in the state.

Notable variables for Richmond County within this dimension include:

VARIABLE STRENGTH	FACTOR	RICHMOND COUNTY VALUE	NC COUNTY AVERAGE VALUE
Strongest	Debt Service Ratio of County Government	0.06	0.07
2nd Strongest	County Sales Tax	\$12,095,655	\$31,151,902
Bottom 10 in NC	Dependency Ratio of County Government	0.27	0.16
Bottom 10 in NC	Solvency Ratio of County Government	23.63	46.7
Bottom 10 in NC, Weakest	Quick Ratio of County Government	2.12	16.4

Communication: 44.27

This component assesses the availability and quality of communication infrastructure, such as broadband internet access, which is crucial for businesses and residents to stay connected and

resilient during disruptions. Richmond County's performance on this dimension is average when compared to other North Carolina counties, ranking 66th in the state.

Notable variables for Richmond County within this dimension include:

VARIABLE STRENGTH	FACTOR	RICHMOND COUNTY VALUE	NC COUNTY AVERAGE VALUE
Strongest	Broadband Availability	0.61	0.6
2nd Strongest	Local High-Speed Mobile Data Availability	0.61	0.66
Weakest	Percentage of Population without Smartphones	19.84%	17.22%

Housing & Transportation: 22.22

This component evaluates the accessibility and affordability of housing, as well as the availability of reliable transportation options, which are essential for a resilient workforce and economy.

Richmond County's performance on this dimension is weak when compared to other North Carolina counties, ranking 98th in the state.

Notable variables for Richmond County within this dimension include:

VARIABLE STRENGTH	FACTOR	RICHMOND COUNTY VALUE	NC COUNTY AVERAGE VALUE
Strongest	Percentage of People with Commute Times Over 45 Minutes	12.49%	16.69%
2nd Strongest	Ratio of Average Estimated Home Value to Median Income	6.74	13.67
Bottom 10 in NC	Percentage of Households with More Residents than Rooms	3.76%	2.1%
Bottom 10 in NC	Average Available Rent Money less the Average HUD Fair Market Rent	\$449.1	\$799.87
Bottom 10 in NC	Percentage of Population without Vehicles	10.73%	5.75%
Bottom 10 in NC, Weakest	Percentage of Homes Built Before 1980	58.6%	40.9%

Healthcare: 12.33

The healthcare component examines the availability and quality of healthcare facilities, services, and professionals, which are critical for maintaining a healthy and productive workforce. Richmond County's performance on this dimension is weak when compared to other North Carolina counties, ranking 93rd in the state.

Notable variables for Richmond County within this dimension include:

VARIABLE STRENGTH	FACTOR	RICHMOND COUNTY VALUE	NC COUNTY AVERAGE VALUE
Strongest	Nursing Home Beds per 1,000 Residents of Age 65+	27.61	27.53
2nd Strongest	Nurses per 10,000 Residents	146.87	262.64
Bottom 10 in NC, Weakest	Opioid Deaths per 100,000 Residents	69.2	38.73

Community Cohesion: 27.01

This component looks at the strength of social networks, community engagement, and the ability of residents to work together to address challenges and support one another during times of adversity. Richmond County's performance on this dimension is weak when compared to other North Carolina counties, ranking 95th in the state.

Notable variables for Richmond County within this dimension include:

VARIABLE STRENGTH	FACTOR	RICHMOND COUNTY VALUE	NC COUNTY AVERAGE VALUE
Strongest	Nonprofits Organizations per 1,000 Residents	4.16	3.17
2nd Strongest	Percentage of Inactive Voters	12.99%	11.3%
Bottom 10 in NC	Violent Crimes per 10,000 Residents	7.22	3.07
Bottom 10 in NC, Weakest	Property Crimes per 10,000 Residents	33.69	15.74

Socioeconomics: 17.04

This component considers factors such as income levels, poverty rates, and inequality, which can impact a community's ability to withstand and recover from economic shocks. Richmond County's

performance on this dimension is weak when compared to other North Carolina counties, ranking 90th in the state.

Notable variables for Richmond County within this dimension include:

VARIABLE STRENGTH	FACTOR	RICHMOND COUNTY VALUE	NC COUNTY AVERAGE VALUE
Strongest	Percentage of Population without Health Insurance	10.3%	11.23%
2nd Strongest	Gini Coefficient (Income Inequality)	0.47	0.46
Bottom 10 in NC	Total Percentage of Population Below 150% Poverty Line	36.73%	25.93%
Bottom 10 in NC, Weakest	Median Household Income	\$51,9	\$70,088

Education: 29.04

This component evaluates the quality of educational institutions and the educational attainment levels of the local population, which play a crucial role in developing a skilled and adaptable workforce. Richmond County's performance on this dimension is fairly weak when compared to other North Carolina counties, ranking 81st in the state.

Notable variables for Richmond County within this dimension include:

VARIABLE STRENGTH	FACTOR	RICHMOND COUNTY VALUE	NC COUNTY AVERAGE VALUE
Strongest	Postsecondary Enrollment Percentage	26.44%	25.48%
2nd Strongest	Teacher Attrition Rate	0.11	0.12
Bottom 10 in NC, Weakest	Local LEA Financial Resources (per ADM)	\$4,088	\$8,683

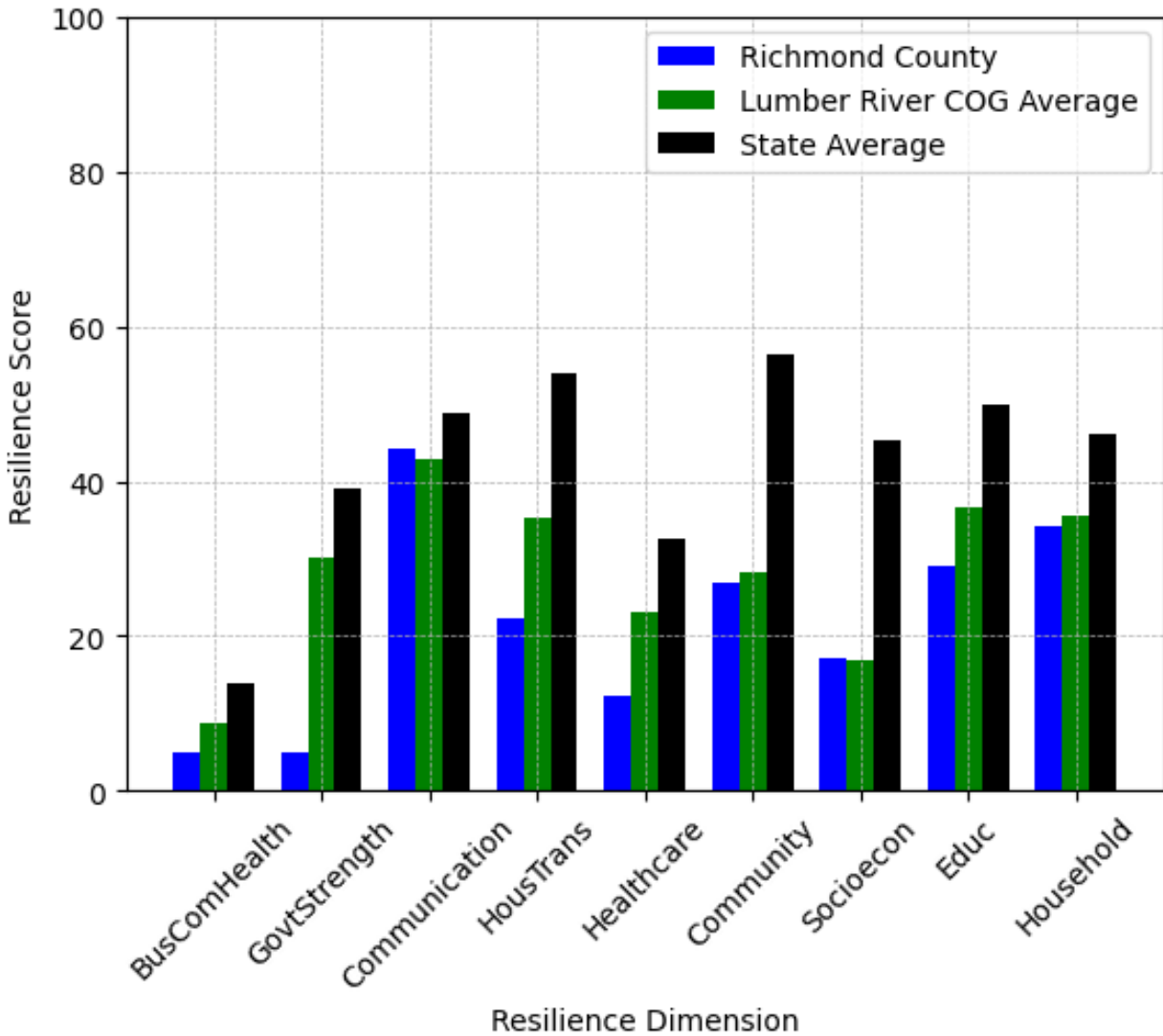
Household Characteristics: 34.08

This component examines factors such as the proportion of single-parent households, age distribution, and the proportion of individuals with disabilities, as these elements can influence a community's resilience and ability to recover from economic disruptions. Richmond County's performance on this dimension is fairly weak when compared to other North Carolina counties, ranking 82nd in the state.

Notable variables for Richmond County within this dimension include:

VARIABLE STRENGTH	FACTOR	RICHMOND COUNTY VALUE	NC COUNTY AVERAGE VALUE
Strongest	Percentage of Population 65 and Older	17.91%	20.53%
2nd Strongest	Percentage of Population with Limited English Proficiency	0.969%	1.454%
Bottom 10 in NC, Weakest	Percentage of Single Parent Households	51.216%	36.132%

Richmond County's Resilience Dimension Scores Over Time As Compared to the Region and State Averages



Note: Resilience Scores are normalized from 1 to 100 with the most resilient county scoring 100. The Resilience Score is determined based on a county's performance relative to NC's other 99 counties.

Notable Trends in Resilience Indicators, 2017-2022

NOTE: The key trends in the this section are identified based on change rates of at least .15 standard deviations over at least 5 years. Variables are positively oriented such that a positive trend indicates improved performance (e.g., 'improvement' in property crime is a lower crime rate, while 'decline' in property crime indicates a higher crime rate).

Trends in the Business Community Health dimension:

Total Employment Level: **901** (5-year change rate = **6.63%**, from 13,596 to 14,497)

↑ Change in rank from 58 to 57 in NC

Average Weekly Wages: **202 dollars** (5-year change rate = **30.1%**, from 671 to 873)

↑ Change in rank from 82 to 69 in NC

Real GDP in Current Dollars: **21,923 dollars** (5-year change rate = **1.11%**, from 1,980,846 to 2,002,769)

↑ Change in rank from 47 to 45 in NC

Trends in the County Government Fiscal Strength dimension:

Adjusted Tax Base: **13,679 dollars** (5-year change rate = **20.06%**, from 68,193 to 81,872)

↓ Change in rank from 84 to 87 in NC

County Sales Tax: **4,495,348 dollars** (5-year change rate = **59.15%**, from 7,600,307 to 12,095,655)

↑ Change in rank from 62 to 60 in NC

Trends in the Housing & Transportation dimension:

Ratio of Average Estimated Home Value to Median Income : **2.38** (5-year change rate = **54.75%**, from 4.35 to 6.74)

↓ Change in rank from 41 to 42 in NC

Average Available Rent Money less the Average HUD Fair Market Rent: **75.2 dollars** (5-year change rate = **20.11%**, from 373.9 to 449.1)

↓ Change in rank from 86 to 95 in NC

Trends in the Healthcare dimension:

Opioid Deaths per 100,000 Residents: **51.3** (5-year change rate = **286.59%**, from 17.9 to 69.2)

↓ Change in rank from 31 to 95 in NC

Nurses per 10,000 Residents: **-23.71** (5-year change rate = **-13.9%**, from 170.58 to 146.87)

↓ Change in rank from 51 to 55 in NC

Physicians per 10,000 Residents: **-0.15** (5-year change rate = **-1.64%**, from 9.13 to 8.98)

↑ Change in rank from 65 to 62 in NC

Mental Health Professionals per 10,000 Residents: **1.51** (5-year change rate = **55.11%**, from 2.74 to 4.25)

↑ Change in rank from 86 to 71 in NC

Trends in the Community Cohesion dimension:

Violent Crimes per 10,000 Residents: **2.98** (4-year change rate = **70.38%**, from 4.24 to 7.22)

↓ Change in rank from 81 to 92 in NC

Property Crimes per 10,000 Residents: **-3.99** (4-year change rate = **-10.59%**, from 37.68 to 33.69)

↓ Change in rank from 94 to 95 in NC

Nonprofits Organizations per 1,000 Residents: **1.74** (5-year change rate = **71.96%**, from 2.42 to 4.16)

↑ Change in rank from 65 to 22 in NC

Trends in the Socioeconomics dimension:

Unemployment Rate (Q4): **-0.9 percent** (5-year change rate = **-15.88%**, from 5.7 to 4.8)

↑ Change in rank from 87 to 86 in NC

Median Household Income: **8,800 dollars** (5-year change rate = **20.42%**, from 43,100 to 51,900)

↓ Change in rank from 90 to 95 in NC

Trends in the Education dimension:

Graduation Percentage: **1.5 percent** (5-year change rate = **1.82%**, from 82.4 to 83.9)

↑ Change in rank from 89 to 87 in NC

Dropout Rate: **-0.82 percent** (5-year change rate = **-22.86%**, from 3.58 to 2.76)

↑ Change in rank from 91 to 89 in NC

3rd Grade Reading Proficiency: **-10.2 percent** (5-year change rate = **-22.37%**, from 45.6 to 35.4)

↑ Change in rank from 84 to 78 in NC

Data Advisements:

- Availability of Broadband Services is not available for 2022 and was excluded from calculating this county's dimension and resilience score.
- Adoption Rate of Broadband Services is not available for 2022 and was excluded from calculating this county's dimension and resilience score.