

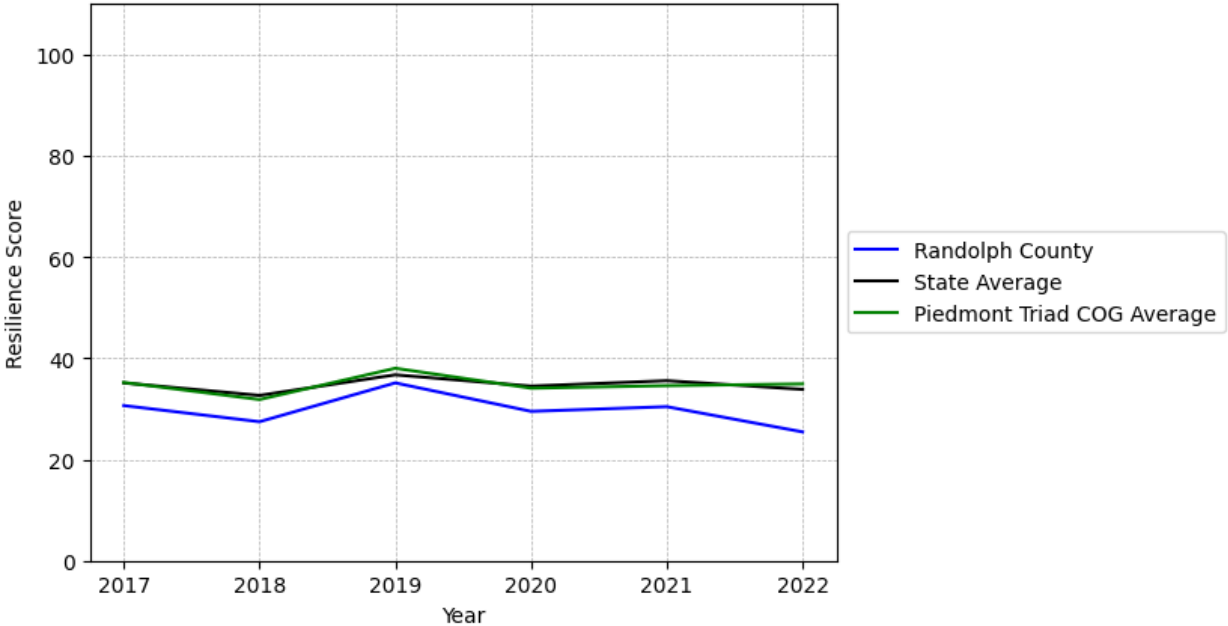
# Randolph County Summary

---

**Resilience Score: 25.44**

In 2022, Randolph County achieved a Resilience Score of 25.44, which is average as compared to the North Carolina State average.

**Randolph County's Resilience Score Over Time  
As Compared to the Region and State Averages**



*Note: Resilience Scores are normalized from 1 to 100 with the most resilient county scoring 100. The Resilience Score is determined based on a county's performance relative to NC's other 99 counties.*

Randolph County's Resilience Score is comprised of 9 distinct dimensions of resilience. Below are Randolph County's scores for 2022 on those 9 dimensions, and their rank relative to other North Carolina counties.

### **Business Community Health: 2.53**

This component examines the strength and diversity of the local business community, including factors such as the number of businesses, employment levels, and industry diversity. Randolph County's performance on this dimension is fairly weak when compared to other North Carolina counties, ranking 99th in the state.

Notable variables for Randolph County within this dimension include:

| <b>VARIABLE STRENGTH</b>        | <b>FACTOR</b>  | <b>RANDOLPH COUNTY VALUE</b> | <b>NC COUNTY AVERAGE VALUE</b> |
|---------------------------------|--|------------------------------|--------------------------------|
| <b>Strongest</b>                | Total Employment Level   | 43,428                       | 45,758                         |
| <b>2nd Strongest</b>            | Real GDP in Current Dollars  | \$4,187,682                  | \$6,092,555                    |
| <b>Bottom 10 in NC, Weakest</b> | Ratio of Available Child Care Slots to Number of Children under Five | 0.36                         | 0.59                           |

---

### **County Government Fiscal Strength: 24.69**

This component looks at the financial health of local governments, including their ability to generate revenue, manage debt, and maintain adequate reserves to weather economic downturns. Randolph County's performance on this dimension is fairly weak when compared to other North Carolina counties, ranking 81st in the state.

Notable variables for Randolph County within this dimension include:

| <b>VARIABLE STRENGTH</b> | <b>FACTOR</b>                         | <b>RANDOLPH COUNTY VALUE</b> | <b>NC COUNTY AVERAGE VALUE</b> |
|--------------------------|---------------------------------------|------------------------------|--------------------------------|
| <b>Strongest</b>         | County Sales Tax                      | \$35,594,228                 | \$31,151,902                   |
| <b>2nd Strongest</b>     | Dependency Ratio of County Government | 0.13                         | 0.16                           |
| <b>Weakest</b>           | Solvency Ratio of County Government   | 28.65                        | 46.7                           |

---

### **Communication: 63.48**

This component assesses the availability and quality of communication infrastructure, such as broadband internet access, which is crucial for businesses and residents to stay connected and resilient during disruptions. Randolph County's performance on this dimension is fairly strong when compared to other North Carolina counties, ranking 27th in the state.

Notable variables for Randolph County within this dimension include:

| VARIABLE STRENGTH    | FACTOR   | RANDOLPH COUNTY VALUE | NC COUNTY AVERAGE VALUE |
|----------------------|--|-----------------------|-------------------------|
| <b>Strongest</b>     | Broadband Availability                         | 0.74                  | 0.6                     |
| <b>2nd Strongest</b> | Percentage of Population without Smartphones   | 13.97%                | 17.22%                  |
| <b>Weakest</b>       | In-Vehicle High-Speed Mobile Data Availability | 0.39                  | 0.37                    |

### **Housing & Transportation: 77.08**

This component evaluates the accessibility and affordability of housing, as well as the availability of reliable transportation options, which are essential for a resilient workforce and economy. Randolph County's performance on this dimension is fairly strong when compared to other North Carolina counties, ranking 21st in the state.

Notable variables for Randolph County within this dimension include:

| VARIABLE STRENGTH    | FACTOR  | RANDOLPH COUNTY VALUE | NC COUNTY AVERAGE VALUE |
|----------------------|---|-----------------------|-------------------------|
| <b>Strongest</b>     | Ratio of Average Estimated Home Value to Median Income  | 2.83                  | 13.67                   |
| <b>2nd Strongest</b> | Percentage of Owner-Occupied Homes                      | 66.25%                | 57.87%                  |
| <b>Weakest</b>       | Percentage of Households with More Residents than Rooms | 2.31%                 | 2.1%                    |

### **Healthcare: 10.21**

The healthcare component examines the availability and quality of healthcare facilities, services, and professionals, which are critical for maintaining a healthy and productive workforce. Randolph County's performance on this dimension is weak when compared to other North Carolina counties, ranking 94th in the state.

Notable variables for Randolph County within this dimension include:

| VARIABLE STRENGTH    | FACTOR   | RANDOLPH COUNTY VALUE | NC COUNTY AVERAGE VALUE |
|----------------------|--|-----------------------|-------------------------|
| <b>Strongest</b>     | Nurses per 10,000 Residents                      | 238.57                | 262.64                  |
| <b>2nd Strongest</b> | Nursing Home Beds per 1,000 Residents of Age 65+ | 26.2                  | 27.53                   |

|                                     |  |      |       |
|-------------------------------------|--|------|-------|
| <b>Bottom 10 in NC,<br/>Weakest</b> | Opioid Deaths per<br>100,000 Residents | 72.4 | 38.73 |
|-------------------------------------|--|------|-------|

### Community Cohesion: 58.58

This component looks at the strength of social networks, community engagement, and the ability of residents to work together to address challenges and support one another during times of adversity. Randolph County's performance on this dimension is average when compared to other North Carolina counties, ranking 47th in the state.

Notable variables for Randolph County within this dimension include:

| VARIABLE STRENGTH    | FACTOR                                       | RANDOLPH COUNTY VALUE | NC COUNTY AVERAGE VALUE |
|----------------------|--|-----------------------|-------------------------|
| <b>Strongest</b>     | Percentage of Inactive Voters                | 9.98%                 | 11.3%                   |
| <b>2nd Strongest</b> | Violent Crimes per 10,000 Residents          | 1.91                  | 3.07                    |
| <b>Weakest</b>       | Nonprofits Organizations per 1,000 Residents | 2.09                  | 3.17                    |

### Socioeconomics: 43.94

This component considers factors such as income levels, poverty rates, and inequality, which can impact a community's ability to withstand and recover from economic shocks. Randolph County's performance on this dimension is average when compared to other North Carolina counties, ranking 53rd in the state.

Notable variables for Randolph County within this dimension include:

| VARIABLE STRENGTH    | FACTOR  | RANDOLPH COUNTY VALUE | NC COUNTY AVERAGE VALUE |
|----------------------|---|-----------------------|-------------------------|
| <b>Strongest</b>     | Gini Coefficient (Income Inequality)                              | 0.43                  | 0.46                    |
| <b>2nd Strongest</b> | Percentage of Households Spending more than 30% Income on Housing | 21.41%                | 24.53%                  |
| <b>Weakest</b>       | Percentage of Population without Health Insurance                 | 12.95%                | 11.23%                  |

**Education: 43.09**

This component evaluates the quality of educational institutions and the educational attainment levels of the local population, which play a crucial role in developing a skilled and adaptable workforce. Randolph County's performance on this dimension is average when compared to other North Carolina counties, ranking 58th in the state.

Notable variables for Randolph County within this dimension include:

| VARIABLE STRENGTH    | FACTOR                                  | RANDOLPH COUNTY VALUE | NC COUNTY AVERAGE VALUE |
|----------------------|---|-----------------------|-------------------------|
| <b>Strongest</b>     | Teacher Attrition Rate                  | 0.08                  | 0.12                    |
| <b>2nd Strongest</b> | Postsecondary Enrollment Percentage     | 24.23%                | 25.48%                  |
| <b>Weakest</b>       | Local LEA Financial Resources (per ADM) | \$5,059               | \$8,683                 |

---

**Household Characteristics: 37.56**

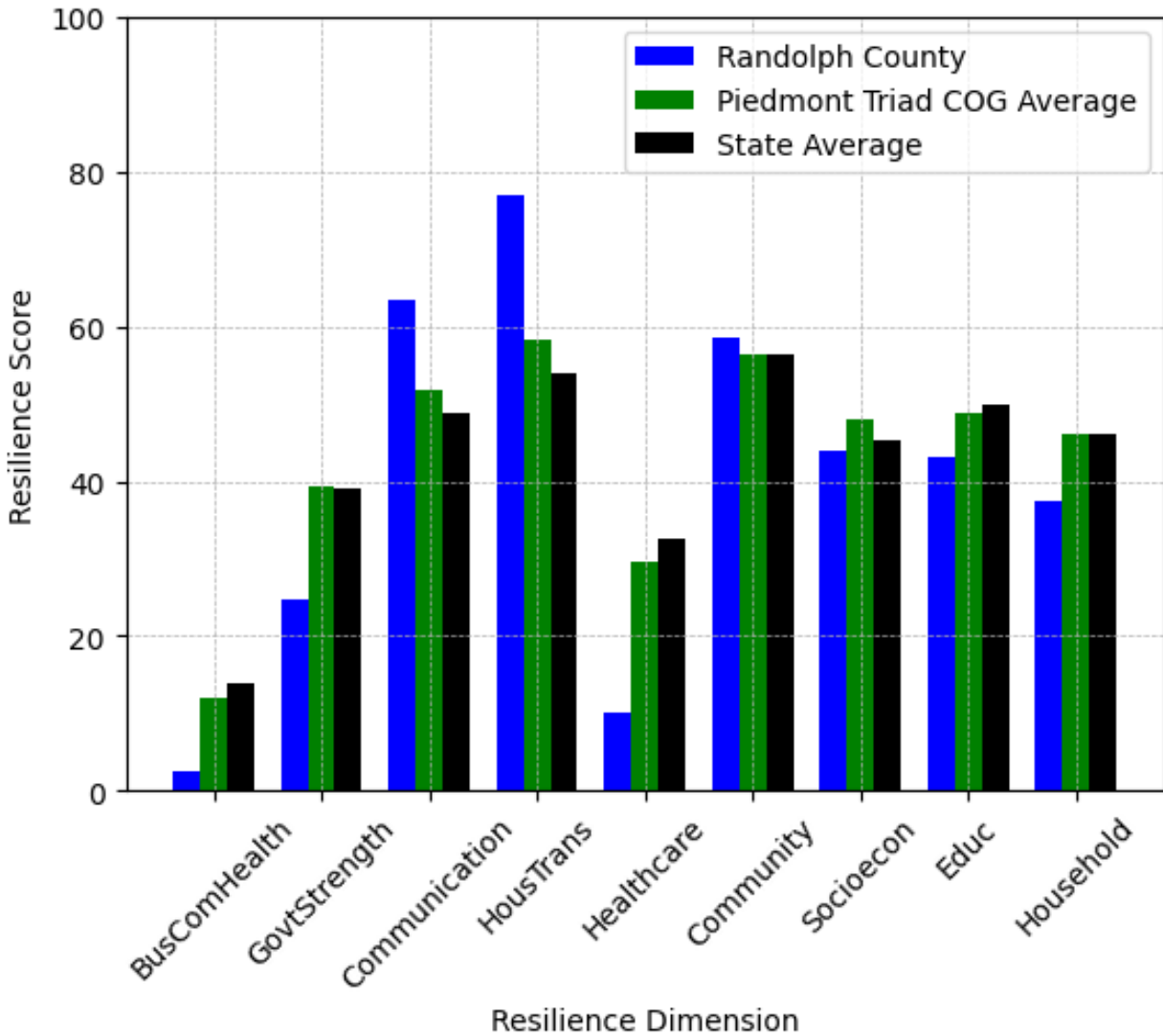
This component examines factors such as the proportion of single-parent households, age distribution, and the proportion of individuals with disabilities, as these elements can influence a community's resilience and ability to recover from economic disruptions. Randolph County's performance on this dimension is average when compared to other North Carolina counties, ranking 76th in the state.

Notable variables for Randolph County within this dimension include:

| VARIABLE STRENGTH    | FACTOR  | RANDOLPH COUNTY VALUE | NC COUNTY AVERAGE VALUE |
|----------------------|---|-----------------------|-------------------------|
| <b>Strongest</b>     | Percentage of Population 65 and Older                     | 17.95%                | 20.53%                  |
| <b>2nd Strongest</b> | Percentage of Single Parent Households                    | 33.128%               | 36.132%                 |
| <b>Weakest</b>       | Percentage of Population with Limited English Proficiency | 2.438%                | 1.454%                  |

---

## Randolph County's Resilience Dimension Scores Over Time As Compared to the Region and State Averages



*Note: Resilience Scores are normalized from 1 to 100 with the most resilient county scoring 100. The Resilience Score is determined based on a county's performance relative to NC's other 99 counties.*

## **Notable Trends in Resilience Indicators, 2017-2022**

*NOTE: The key trends in the this section are identified based on change rates of at least .15 standard deviations over at least 5 years. Variables are positively oriented such that a positive trend indicates improved performance (e.g., 'improvement' in property crime is a lower crime rate, while 'decline' in property crime indicates a higher crime rate).*

### **Trends in the Business Community Health dimension:**

Total Employment Level: **-1,506** (5-year change rate = **-3.35%**, from 44,934 to 43,428)

↓ Change in rank from 20 to 21 in NC

Average Weekly Wages: **177 dollars** (5-year change rate = **24.55%**, from 721 to 898)

↓ Change in rank from 48 to 60 in NC

Real GDP in Current Dollars: **-33,837 dollars** (5-year change rate = **-0.8%**, from 4,221,519 to 4,187,682)

↓ Change in rank from 25 to 27 in NC

### **Trends in the County Government Fiscal Strength dimension:**

Adjusted Tax Base: **11,205 dollars** (5-year change rate = **15.21%**, from 73,656 to 84,861)

↓ Change in rank from 71 to 77 in NC

County Sales Tax: **11,560,226 dollars** (5-year change rate = **48.1%**, from 24,034,002 to 35,594,228)

↓ Change in rank from 23 to 24 in NC

### **Trends in the Housing & Transportation dimension:**

Ratio of Average Estimated Home Value to Median Income : **0.69** (5-year change rate = **31.96%**, from 2.15 to 2.83)

→ No change in rank

Average Available Rent Money less the Average HUD Fair Market Rent: **191.8 dollars** (5-year change rate = **33.06%**, from 580.2 to 772)

↓ Change in rank from 33 to 53 in NC

**Trends in the Healthcare dimension:**

Opioid Deaths per 100,000 Residents: **33.3** (5-year change rate = **85.17%**, from 39.1 to 72.4)

↓ Change in rank from 90 to 96 in NC

Nurses per 10,000 Residents: **-15.07** (5-year change rate = **-5.94%**, from 253.64 to 238.57)

↓ Change in rank from 30 to 33 in NC

Physicians per 10,000 Residents: **-0.36** (5-year change rate = **-4.85%**, from 7.42 to 7.06)

↓ Change in rank from 72 to 80 in NC

Mental Health Professionals per 10,000 Residents: **0.35** (5-year change rate = **12.82%**, from 2.73 to 3.08)

↑ Change in rank from 87 to 86 in NC

**Trends in the Community Cohesion dimension:**

Property Crimes per 10,000 Residents: **-4.31** (4-year change rate = **-21.03%**, from 20.48 to 16.17)

↓ Change in rank from 56 to 60 in NC

Nonprofits Organizations per 1,000 Residents: **0.21** (5-year change rate = **11.43%**, from 1.88 to 2.09)

↑ Change in rank from 82 to 76 in NC

**Trends in the Socioeconomics dimension:**

Unemployment Rate (Q4): **-0.4 percent** (5-year change rate = **-10%**, from 4 to 3.6)

↓ Change in rank from 33 to 54 in NC



Median Household Income: **15,800 dollars** (5-year change rate = **27.62%**, from 57,200 to 73,000)

↓ Change in rank from 27 to 39 in NC

**Trends in the Education dimension:**

Graduation Percentage: **-3.45 percent** (5-year change rate = **-3.75%**, from 91.9 to 88.45)

↓ Change in rank from 13 to 49 in NC

Dropout Rate: **0.29 percent** (5-year change rate = **21.12%**, from 1.38 to 1.67)

↓ Change in rank from 17 to 52 in NC

3rd Grade Reading Proficiency: **-13.31 percent** (5-year change rate = **-24.75%**, from 53.76 to 40.46)

↓ Change in rank from 50 to 62 in NC

**Data Advisements:**

- Availability of Broadband Services is not available for 2022 and was excluded from calculating this county's dimension and resilience score.
- Adoption Rate of Broadband Services is not available for 2022 and was excluded from calculating this county's dimension and resilience score.