

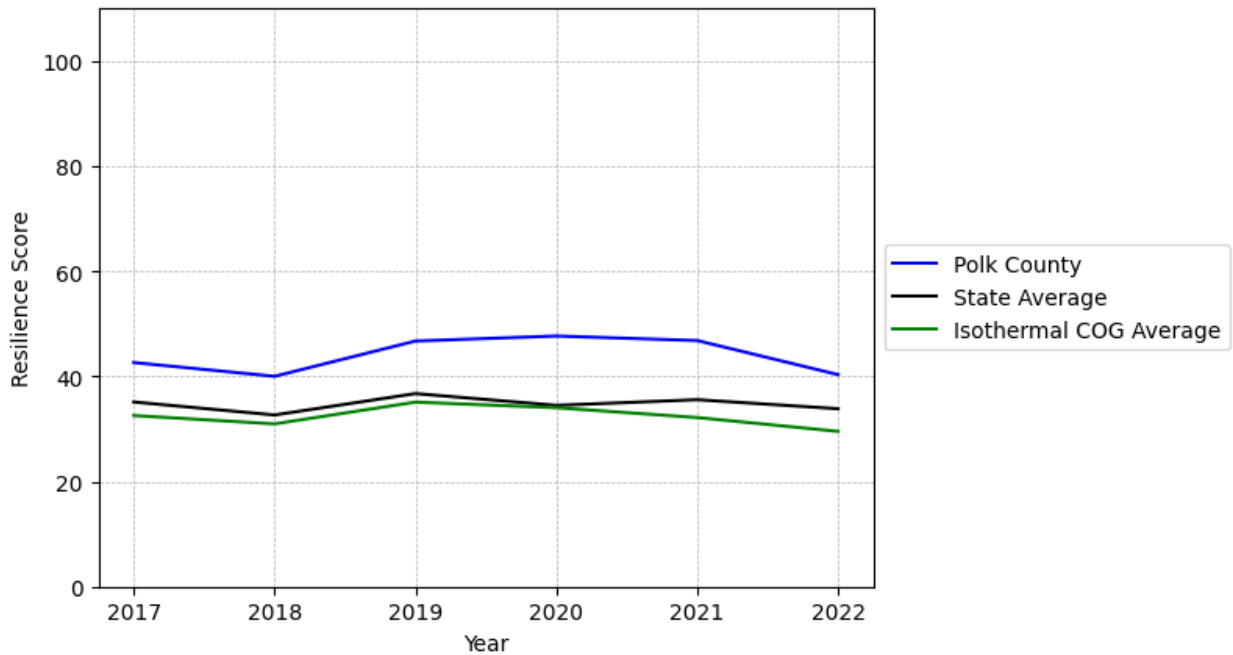
# Polk County Summary

---

**Resilience Score: 40.32**

In 2022, Polk County achieved a Resilience Score of 40.32, which is average as compared to the North Carolina State average.

**Polk County's Resilience Score Over Time  
As Compared to the Region and State Averages**



*Note: Resilience Scores are normalized from 1 to 100 with the most resilient county scoring 100. The Resilience Score is determined based on a county's performance relative to NC's other 99 counties.*

Polk County's Resilience Score is comprised of 9 distinct dimensions of resilience. Below are Polk County's scores for 2022 on those 9 dimensions, and their rank relative to other North Carolina counties.

### **Business Community Health: 5.17**

This component examines the strength and diversity of the local business community, including factors such as the number of businesses, employment levels, and industry diversity. Polk County's performance on this dimension is fairly weak when compared to other North Carolina counties, ranking 87th in the state.

Notable variables for Polk County within this dimension include:

<b>VARIABLE STRENGTH</b>	<b>FACTOR</b>	<b>POLK COUNTY VALUE</b>	<b>NC COUNTY AVERAGE VALUE</b>
<b>Strongest</b>	Percentage of Companies in Science, Engineering, & Technology Industries	7.63%	6.13%
<b>2nd Strongest</b>	Private Sector Diversity	0.375	0.28
<b>Bottom 10 in NC, Weakest</b>	Ratio of Available Child Care Slots to Number of Children under Five	0.25	0.59

---

### **County Government Fiscal Strength: 49.2**

This component looks at the financial health of local governments, including their ability to generate revenue, manage debt, and maintain adequate reserves to weather economic downturns. Polk County's performance on this dimension is average when compared to other North Carolina counties, ranking 39th in the state.

Notable variables for Polk County within this dimension include:

<b>VARIABLE STRENGTH</b>	<b>FACTOR</b>	<b>POLK COUNTY VALUE</b>	<b>NC COUNTY AVERAGE VALUE</b>
<b>Strongest</b>	Adjusted Tax Base	\$170,693	\$124,092
<b>2nd Strongest</b>	Dependency Ratio of County Government	0.11	0.16
<b>Weakest</b>	County Sales Tax	\$5,385,137	\$31,151,902

---

### **Communication: 43.65**

This component assesses the availability and quality of communication infrastructure, such as broadband internet access, which is crucial for businesses and residents to stay connected and resilient during disruptions. Polk County's performance on this dimension is average when compared to other North Carolina counties, ranking 69th in the state.

Notable variables for Polk County within this dimension include:

VARIABLE STRENGTH	FACTOR	POLK COUNTY VALUE	NC COUNTY AVERAGE VALUE
Strongest	Local High-Speed Mobile Data Availability	0.73	0.66
2nd Strongest	Percentage of Population without Smartphones	17.13%	17.22%
Weakest	Broadband Availability	0.43	0.6

### Housing & Transportation: 50.64

This component evaluates the accessibility and affordability of housing, as well as the availability of reliable transportation options, which are essential for a resilient workforce and economy. Polk County's performance on this dimension is average when compared to other North Carolina counties, ranking 67th in the state.

Notable variables for Polk County within this dimension include:

VARIABLE STRENGTH	FACTOR	POLK COUNTY VALUE	NC COUNTY AVERAGE VALUE
Strongest	Percentage of Population without Vehicles	3.66%	5.75%
2nd Strongest	Percentage of Owner-Occupied Homes	60.08%	57.87%
Weakest	Ratio of Average Estimated Home Value to Median Income	29.86	13.67

### Healthcare: 31.42

The healthcare component examines the availability and quality of healthcare facilities, services, and professionals, which are critical for maintaining a healthy and productive workforce. Polk County's performance on this dimension is average when compared to other North Carolina counties, ranking 33rd in the state.

Notable variables for Polk County within this dimension include:

VARIABLE STRENGTH	FACTOR	POLK COUNTY VALUE	NC COUNTY AVERAGE VALUE
Strongest	Mental Health Professionals per 10,000 Residents	10.21	6.6
2nd Strongest	Nursing Home Beds per 1,000 Residents of Age 65+	36.93	27.53

<b>Weakest</b>	Opioid Deaths per 100,000 Residents	48.3	38.73
----------------	-------------------------------------	------	-------

### Community Cohesion: 77.73

This component looks at the strength of social networks, community engagement, and the ability of residents to work together to address challenges and support one another during times of adversity. Polk County's performance on this dimension is strong when compared to other North Carolina counties, ranking 11th in the state.

Notable variables for Polk County within this dimension include:

VARIABLE STRENGTH	FACTOR	POLK COUNTY VALUE	NC COUNTY AVERAGE VALUE
<b>Top 10 in NC, Strongest</b>	Nonprofits Organizations per 1,000 Residents	6.61	3.17
<b>Top 10 in NC, 2nd Strongest</b>	Violent Crimes per 10,000 Residents	0.66	3.07
<b>Weakest</b>	Yearly Population Change Percentage	0.504%	0.906%

### Socioeconomics: 61.88

This component considers factors such as income levels, poverty rates, and inequality, which can impact a community's ability to withstand and recover from economic shocks. Polk County's performance on this dimension is fairly strong when compared to other North Carolina counties, ranking 23rd in the state.

Notable variables for Polk County within this dimension include:

VARIABLE STRENGTH	FACTOR	POLK COUNTY VALUE	NC COUNTY AVERAGE VALUE
<b>Strongest</b>	Percentage of Population without a High School Diploma	5.68%	9.05%
<b>2nd Strongest</b>	Percentage of Households Spending more than 30% Income on Housing	20.06%	24.53%
<b>Weakest</b>	Gini Coefficient (Income Inequality)	0.46	0.46

### Education: 67.45

This component evaluates the quality of educational institutions and the educational attainment levels of the local population, which play a crucial role in developing a skilled and adaptable workforce. Polk County's performance on this dimension is strong when compared to other North Carolina counties, ranking 10th in the state.

Notable variables for Polk County within this dimension include:

VARIABLE STRENGTH	FACTOR	POLK COUNTY VALUE	NC COUNTY AVERAGE VALUE
Top 10 in NC, Strongest	3rd Grade Reading Proficiency	65.1%	43.1%
Top 10 in NC, 2nd Strongest	Student to Teacher Ratio	12	14
Bottom 10 in NC, Weakest	Postsecondary Enrollment Percentage	12.54%	25.48%

---

### Household Characteristics: 44.34

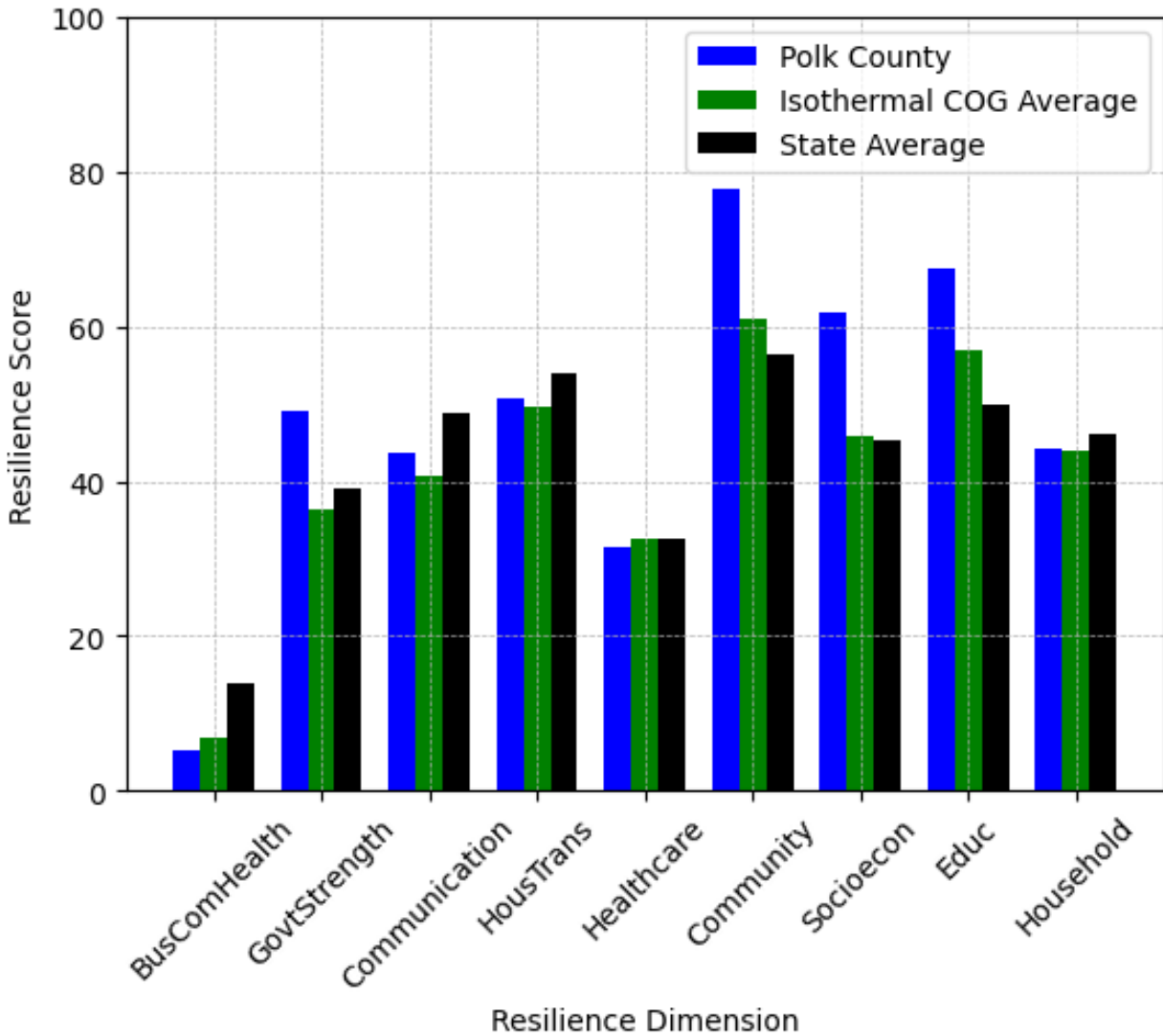
This component examines factors such as the proportion of single-parent households, age distribution, and the proportion of individuals with disabilities, as these elements can influence a community's resilience and ability to recover from economic disruptions. Polk County's performance on this dimension is average when compared to other North Carolina counties, ranking 53rd in the state.

Notable variables for Polk County within this dimension include:

VARIABLE STRENGTH	FACTOR	POLK COUNTY VALUE	NC COUNTY AVERAGE VALUE
Top 10 in NC, Strongest	Percentage of Population 17 and Younger	15.71%	20.37%
2nd Strongest	Percentage of Single Parent Households	29.638%	36.132%
Bottom 10 in NC, Weakest	Percentage of Population 65 and Older	31.66%	20.53%

---

## Polk County's Resilience Dimension Scores Over Time As Compared to the Region and State Averages



*Note: Resilience Scores are normalized from 1 to 100 with the most resilient county scoring 100. The Resilience Score is determined based on a county's performance relative to NC's other 99 counties.*

## **Notable Trends in Resilience Indicators, 2017-2022**

*NOTE: The key trends in the this section are identified based on change rates of at least .15 standard deviations over at least 5 years. Variables are positively oriented such that a positive trend indicates improved performance (e.g., 'improvement' in property crime is a lower crime rate, while 'decline' in property crime indicates a higher crime rate).*

### **Trends in the Business Community Health dimension:**

Total Employment Level: **396** (5-year change rate = **7.89%**, from 5,018 to 5,414)

↑ Change in rank from 82 to 80 in NC

Average Weekly Wages: **216 dollars** (5-year change rate = **34.39%**, from 628 to 844)

↑ Change in rank from 94 to 87 in NC

Real GDP in Current Dollars: **21,851 dollars** (5-year change rate = **4.28%**, from 510,904 to 532,755)

↑ Change in rank from 84 to 82 in NC

### **Trends in the County Government Fiscal Strength dimension:**

Adjusted Tax Base: **37,900 dollars** (5-year change rate = **28.54%**, from 132,793 to 170,693)

↑ Change in rank from 18 to 13 in NC

County Sales Tax: **2,035,080 dollars** (5-year change rate = **60.75%**, from 3,350,058 to 5,385,137)

↓ Change in rank from 79 to 80 in NC

### **Trends in the Housing & Transportation dimension:**

Ratio of Average Estimated Home Value to Median Income : **6.8** (5-year change rate = **29.49%**, from 23.06 to 29.86)

↑ Change in rank from 90 to 88 in NC

Average Available Rent Money less the Average HUD Fair Market Rent: **108 dollars** (5-year change rate = **16.17%**, from 667.9 to 775.9)

↓ Change in rank from 19 to 50 in NC

**Trends in the Healthcare dimension:**

Opioid Deaths per 100,000 Residents: **9.4** (5-year change rate = **24.16%**, from 38.9 to 48.3)

↑ Change in rank from 88 to 77 in NC

Nurses per 10,000 Residents: **-0.25** (5-year change rate = **-0.2%**, from 123.92 to 123.67)

↓ Change in rank from 63 to 67 in NC

Mental Health Professionals per 10,000 Residents: **2.05** (5-year change rate = **25.12%**, from 8.16 to 10.21)

↑ Change in rank from 18 to 12 in NC

**Trends in the Community Cohesion dimension:**

Property Crimes per 10,000 Residents: **-3.38** (4-year change rate = **-24.12%**, from 14.01 to 10.63)

↑ Change in rank from 26 to 19 in NC

Nonprofits Organizations per 1,000 Residents: **0.22** (5-year change rate = **3.47%**, from 6.39 to 6.61)

→ No change in rank

**Trends in the Socioeconomics dimension:**

Unemployment Rate (Q4): **-0.3 percent** (5-year change rate = **-8.62%**, from 3.9 to 3.5)

↓ Change in rank from 21 to 46 in NC

Median Household Income: **8,200 dollars** (5-year change rate = **14.02%**, from 58,500 to 66,700)

↓ Change in rank from 23 to 54 in NC



**Trends in the Education dimension:**

Graduation Percentage: **4.1 percent** (5-year change rate = **4.64%**, from 88.3 to 92.4)

↑ Change in rank from 41 to 14 in NC

Dropout Rate: **0.43 percent** (5-year change rate = **31.36%**, from 1.39 to 1.82)

↓ Change in rank from 18 to 60 in NC

Student to Teacher Ratio: **1** (4-year change rate = **5.24%**, from 11 to 12)

↓ Change in rank from 2 to 10 in NC

3rd Grade Reading Proficiency: **-9.1 percent** (5-year change rate = **-12.26%**, from 74.2 to 65.1)

→ No change in rank

Postsecondary Enrollment Percentage: **-0.16 percent** (5-year change rate = **-56.48%**, from 0.29 to 0.13)

↓ Change in rank from 20 to 97 in NC

**Data Advisements:**

- This county has a population under 20,000 residents according to the US Census Bureau; in low population areas, some variable estimates can be less stable and more sensitive to changes.
- Availability of Broadband Services is not available for 2022 and was excluded from calculating this county's dimension and resilience score.
- Adoption Rate of Broadband Services is not available for 2022 and was excluded from calculating this county's dimension and resilience score.