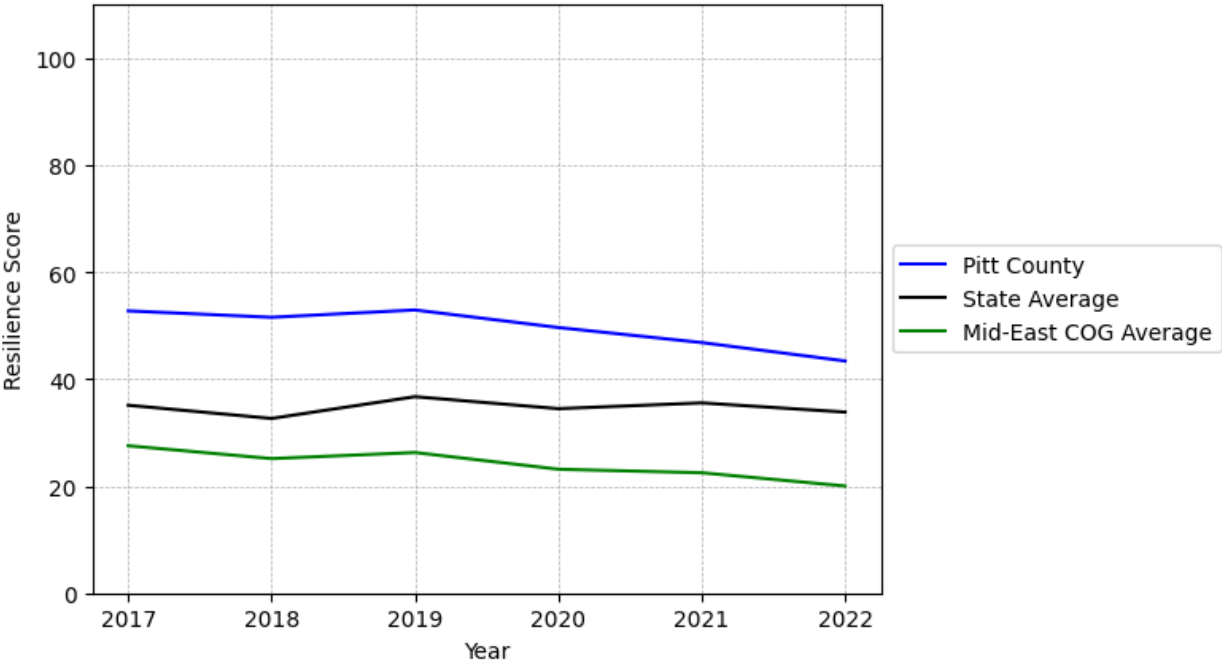


# Pitt County Summary

**Resilience Score: 43.39**

In 2022, Pitt County achieved a Resilience Score of 43.39, which is fairly strong as compared to the North Carolina State average.

**Pitt County's Resilience Score Over Time  
As Compared to the Region and State Averages**



*Note: Resilience Scores are normalized from 1 to 100 with the most resilient county scoring 100. The Resilience Score is determined based on a county's performance relative to NC's other 99 counties.*

Pitt County's Resilience Score is comprised of 9 distinct dimensions of resilience. Below are Pitt County's scores for 2022 on those 9 dimensions, and their rank relative to other North Carolina counties.

### **Business Community Health: 18.38**

This component examines the strength and diversity of the local business community, including factors such as the number of businesses, employment levels, and industry diversity. Pitt County's performance on this dimension is average when compared to other North Carolina counties, ranking 19th in the state.

Notable variables for Pitt County within this dimension include:

<b>VARIABLE STRENGTH</b>	<b>FACTOR</b>	<b>PITT COUNTY VALUE</b>	<b>NC COUNTY AVERAGE VALUE</b>
<b>Top 10 in NC, Strongest</b>	Average Weekly Wages	\$1,099	\$951
<b>2nd Strongest</b>	Real GDP in Current Dollars	\$9,399,4	\$6,092,555
<b>Weakest</b>	Private Sector Diversity	0.118	0.28

---

### **County Government Fiscal Strength: 43.33**

This component looks at the financial health of local governments, including their ability to generate revenue, manage debt, and maintain adequate reserves to weather economic downturns. Pitt County's performance on this dimension is average when compared to other North Carolina counties, ranking 48th in the state.

Notable variables for Pitt County within this dimension include:

<b>VARIABLE STRENGTH</b>	<b>FACTOR</b>	<b>PITT COUNTY VALUE</b>	<b>NC COUNTY AVERAGE VALUE</b>
<b>Strongest</b>	Capital Assets Condition Ratio of County Government	0.61	0.51
<b>2nd Strongest</b>	County Sales Tax	\$48,575,976	\$31,151,902
<b>Weakest</b>	Solvency Ratio of County Government	33.04	46.7

---

### **Communication: 69.59**

This component assesses the availability and quality of communication infrastructure, such as broadband internet access, which is crucial for businesses and residents to stay connected and resilient during disruptions. Pitt County's performance on this dimension is fairly strong when compared to other North Carolina counties, ranking 17th in the state.

Notable variables for Pitt County within this dimension include:

VARIABLE STRENGTH	FACTOR	PITT COUNTY VALUE	NC COUNTY AVERAGE VALUE
<b>Strongest</b>	In-Vehicle High-Speed Mobile Data Availability	0.54	0.37
<b>2nd Strongest</b>	Percentage of Population without Smartphones	12.14%	17.22%
<b>Weakest</b>	Broadband Availability	0.64	0.6

### Housing & Transportation: 59.24

This component evaluates the accessibility and affordability of housing, as well as the availability of reliable transportation options, which are essential for a resilient workforce and economy. Pitt County's performance on this dimension is average when compared to other North Carolina counties, ranking 48th in the state.

Notable variables for Pitt County within this dimension include:

VARIABLE STRENGTH	FACTOR	PITT COUNTY VALUE	NC COUNTY AVERAGE VALUE
<b>Top 10 in NC, Strongest</b>	Ratio of Average Estimated Home Value to Median Income	2.48	13.67
<b>2nd Strongest</b>	Percentage of People with Commute Times Over 45 Minutes	10.57%	16.69%
<b>Bottom 10 in NC, Weakest</b>	Percentage of Owner-Occupied Homes	45.76%	57.87%

### Healthcare: 49.08

The healthcare component examines the availability and quality of healthcare facilities, services, and professionals, which are critical for maintaining a healthy and productive workforce. Pitt County's performance on this dimension is strong when compared to other North Carolina counties, ranking 9th in the state.

Notable variables for Pitt County within this dimension include:

VARIABLE STRENGTH	FACTOR	PITT COUNTY VALUE	NC COUNTY AVERAGE VALUE
<b>Top 10 in NC, Strongest</b>	Physicians per 10,000 Residents	53.82	16.05
<b>Top 10 in NC, 2nd Strongest</b>	Mental Health Professionals per 10,000 Residents	14.8	6.6

<b>Top 10 in NC</b>	Nurses per 10,000 Residents	632.18	262.64
<b>Weakest</b>	Opioid Deaths per 100,000 Residents	48.7	38.73

### Community Cohesion: 39.42

This component looks at the strength of social networks, community engagement, and the ability of residents to work together to address challenges and support one another during times of adversity. Pitt County's performance on this dimension is fairly weak when compared to other North Carolina counties, ranking 85th in the state.

Notable variables for Pitt County within this dimension include:

VARIABLE STRENGTH	FACTOR	PITT COUNTY VALUE	NC COUNTY AVERAGE VALUE
<b>Strongest</b>	Nonprofits Organizations per 1,000 Residents	3.08	3.17
<b>2nd Strongest</b>	Property Crimes per 10,000 Residents	19.67	15.74
<b>Weakest</b>	Percentage of Inactive Voters	14.38%	11.3%

### Socioeconomics: 43.83

This component considers factors such as income levels, poverty rates, and inequality, which can impact a community's ability to withstand and recover from economic shocks. Pitt County's performance on this dimension is average when compared to other North Carolina counties, ranking 55th in the state.

Notable variables for Pitt County within this dimension include:

VARIABLE STRENGTH	FACTOR	PITT COUNTY VALUE	NC COUNTY AVERAGE VALUE
<b>Strongest</b>	Percentage of Population without a High School Diploma	6.03%	9.05%
<b>2nd Strongest</b>	Population 25+ with at least a Bachelor's Degree	33.14%	24.4%
<b>Bottom 10 in NC, Weakest</b>	Percentage of Households Spending more than 30% Income on Housing	30.62%	24.53%

---

**Education: 56.22**

This component evaluates the quality of educational institutions and the educational attainment levels of the local population, which play a crucial role in developing a skilled and adaptable workforce. Pitt County's performance on this dimension is fairly strong when compared to other North Carolina counties, ranking 28th in the state.

Notable variables for Pitt County within this dimension include:

<b>VARIABLE STRENGTH</b>	<b>FACTOR</b>	<b>PITT COUNTY VALUE</b>	<b>NC COUNTY AVERAGE VALUE</b>
<b>Top 10 in NC, Strongest</b>	Postsecondary Enrollment Percentage	62.85%	25.48%
<b>2nd Strongest</b>	Teacher Attrition Rate	0.09	0.12
<b>Weakest</b>	Graduation Percentage	85.7%	88.03%

---

**Household Characteristics: 49.84**

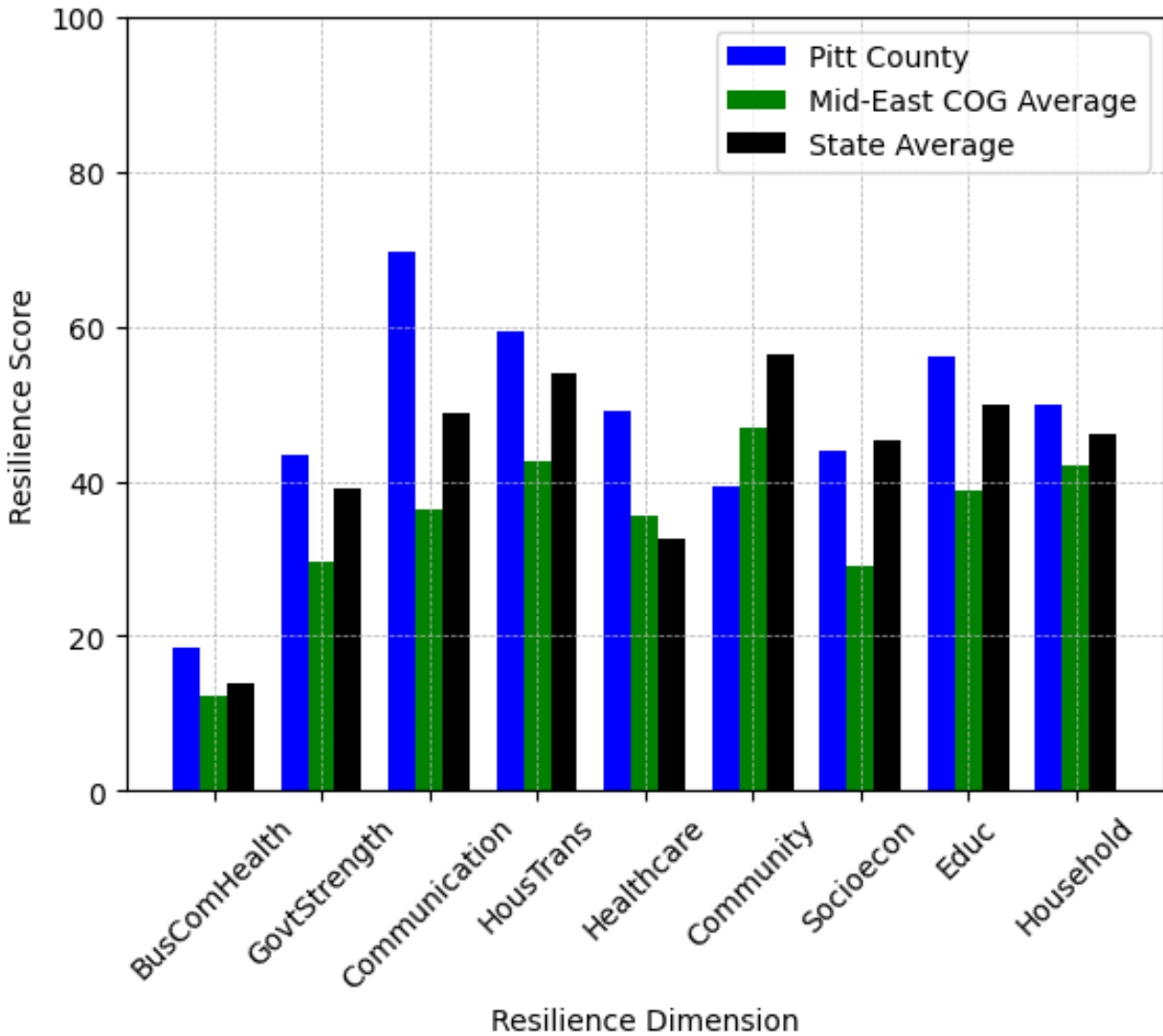
This component examines factors such as the proportion of single-parent households, age distribution, and the proportion of individuals with disabilities, as these elements can influence a community's resilience and ability to recover from economic disruptions. Pitt County's performance on this dimension is average when compared to other North Carolina counties, ranking 30th in the state.

Notable variables for Pitt County within this dimension include:

<b>VARIABLE STRENGTH</b>	<b>FACTOR</b>	<b>PITT COUNTY VALUE</b>	<b>NC COUNTY AVERAGE VALUE</b>
<b>Strongest</b>	Percentage of Population 65 and Older	14.06%	20.53%
<b>2nd Strongest</b>	Percentage of Population with a Disability	14.782%	16.566%
<b>Weakest</b>	Percentage of Single Parent Households	45.536%	36.132%

---

## Pitt County's Resilience Dimension Scores Over Time As Compared to the Region and State Averages



*Note: Resilience Scores are normalized from 1 to 100 with the most resilient county scoring 100. The Resilience Score is determined based on a county's performance relative to NC's other 99 counties.*

## **Notable Trends in Resilience Indicators, 2017-2022**

*NOTE: The key trends in the this section are identified based on change rates of at least .15 standard deviations over at least 5 years. Variables are positively oriented such that a positive trend indicates improved performance (e.g., 'improvement' in property crime is a lower crime rate, while 'decline' in property crime indicates a higher crime rate).*

### **Trends in the Business Community Health dimension:**

Total Employment Level: **2,992** (5-year change rate = **3.87%**, from 77,310 to 80,302)

↓ Change in rank from 11 to 12 in NC

Average Weekly Wages: **234 dollars** (5-year change rate = **27.05%**, from 865 to 1,099)

→ No change in rank

Real GDP in Current Dollars: **-269,889 dollars** (5-year change rate = **-2.79%**, from 9,669,289 to 9,399,400)

↓ Change in rank from 9 to 11 in NC

### **Trends in the County Government Fiscal Strength dimension:**

Adjusted Tax Base: **19,172 dollars** (5-year change rate = **28.72%**, from 66,765 to 85,937)

↑ Change in rank from 89 to 76 in NC

County Sales Tax: **14,433,352 dollars** (5-year change rate = **42.27%**, from 34,142,624 to 48,575,976)

→ No change in rank

### **Trends in the Housing & Transportation dimension:**

Ratio of Average Estimated Home Value to Median Income : **0.46** (5-year change rate = **22.86%**, from 2.02 to 2.48)

↑ Change in rank from 10 to 9 in NC

Average Available Rent Money less the Average HUD Fair Market Rent: **307.4 dollars** (5-year change rate = **66.62%**, from 461.4 to 768.8)

↑ Change in rank from 64 to 55 in NC

**Trends in the Healthcare dimension:**

Opioid Deaths per 100,000 Residents: **19.7** (5-year change rate = **67.93%**, from 29 to 48.7)

↓ Change in rank from 66 to 80 in NC

Nurses per 10,000 Residents: **0.42** (5-year change rate = **0.07%**, from 631.76 to 632.18)

→ No change in rank

Physicians per 10,000 Residents: **2.29** (5-year change rate = **4.44%**, from 51.53 to 53.82)

→ No change in rank

Mental Health Professionals per 10,000 Residents: **1.79** (5-year change rate = **13.76%**, from 13.01 to 14.8)

↑ Change in rank from 7 to 5 in NC

**Trends in the Community Cohesion dimension:**

Property Crimes per 10,000 Residents: **-4.74** (4-year change rate = **-19.42%**, from 24.41 to 19.67)

↓ Change in rank from 69 to 74 in NC

Nonprofits Organizations per 1,000 Residents: **0.37** (5-year change rate = **13.73%**, from 2.71 to 3.08)

↑ Change in rank from 53 to 52 in NC

**Trends in the Socioeconomics dimension:**

Unemployment Rate (Q4): **-0.5 percent** (5-year change rate = **-11.45%**, from 4.4 to 3.9)

↓ Change in rank from 54 to 61 in NC

Median Household Income: **18,000 dollars** (5-year change rate = **33.21%**, from 54,200 to 72,200)



↑ Change in rank from 41 to 40 in NC

**Trends in the Education dimension:**

Dropout Rate: **-0.4 percent** (5-year change rate = **-18.99%**, from 2.1 to 1.7)

↓ Change in rank from 43 to 55 in NC

Student to Teacher Ratio: **-1** (4-year change rate = **-5.02%**, from 16 to 15)

↑ Change in rank from 77 to 67 in NC

3rd Grade Reading Proficiency: **-6 percent** (5-year change rate = **-12.2%**, from 49.2 to 43.2)

↑ Change in rank from 74 to 53 in NC

**Data Advisements:**

- Availability of Broadband Services is not available for 2022 and was excluded from calculating this county's dimension and resilience score.
- Adoption Rate of Broadband Services is not available for 2022 and was excluded from calculating this county's dimension and resilience score.