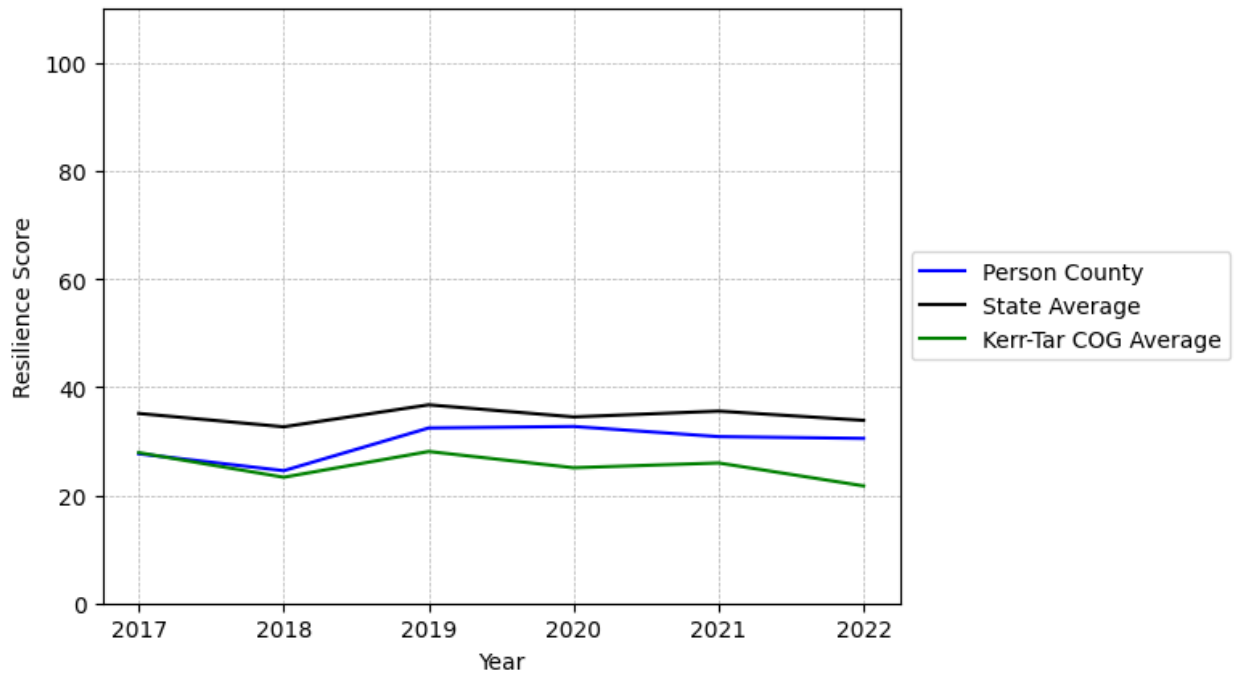


Person County Summary

Resilience Score: 30.5

In 2022, Person County achieved a Resilience Score of 30.5, which is average as compared to the North Carolina State average.

**Person County's Resilience Score Over Time
As Compared to the Region and State Averages**



Note: Resilience Scores are normalized from 1 to 100 with the most resilient county scoring 100. The Resilience Score is determined based on a county's performance relative to NC's other 99 counties.

Person County's Resilience Score is comprised of 9 distinct dimensions of resilience. Below are Person County's scores for 2022 on those 9 dimensions, and their rank relative to other North Carolina counties.

Business Community Health: 10.14

This component examines the strength and diversity of the local business community, including factors such as the number of businesses, employment levels, and industry diversity. Person County's performance on this dimension is average when compared to other North Carolina counties, ranking 56th in the state.

Notable variables for Person County within this dimension include:

VARIABLE STRENGTH	FACTOR	PERSON COUNTY VALUE	NC COUNTY AVERAGE VALUE
Strongest	Private Sector Diversity	0.329	0.28
2nd Strongest	Ratio of Available Child Care Slots to Number of Children under Five	0.62	0.59
Weakest	Science, Engineering, & Technology Industries Employment Percentage	0.56%	1.79%

County Government Fiscal Strength: 57.98

This component looks at the financial health of local governments, including their ability to generate revenue, manage debt, and maintain adequate reserves to weather economic downturns. Person County's performance on this dimension is fairly strong when compared to other North Carolina counties, ranking 22nd in the state.

Notable variables for Person County within this dimension include:

VARIABLE STRENGTH	FACTOR	PERSON COUNTY VALUE	NC COUNTY AVERAGE VALUE
Top 10 in NC, Strongest	Debt Service Ratio of County Government	0	0.07
Top 10 in NC, 2nd Strongest	Operations Ratio of County Government	1.3	1.11
Weakest	Capital Assets Condition Ratio of County Government	0.4	0.51

Communication: 43.79

This component assesses the availability and quality of communication infrastructure, such as broadband internet access, which is crucial for businesses and residents to stay connected and resilient during disruptions. Person County's performance on this dimension is average when compared to other North Carolina counties, ranking 68th in the state.

Notable variables for Person County within this dimension include:

VARIABLE STRENGTH	FACTOR	PERSON COUNTY VALUE	NC COUNTY AVERAGE VALUE
Strongest	Percentage of Population without Smartphones	17.11%	17.22%
2nd Strongest	In-Vehicle High-Speed Mobile Data Availability	0.32	0.37
Weakest	Broadband Availability	0.49	0.6

Housing & Transportation: 63.63

This component evaluates the accessibility and affordability of housing, as well as the availability of reliable transportation options, which are essential for a resilient workforce and economy. Person County's performance on this dimension is average when compared to other North Carolina counties, ranking 44th in the state.

Notable variables for Person County within this dimension include:

VARIABLE STRENGTH	FACTOR	PERSON COUNTY VALUE	NC COUNTY AVERAGE VALUE
Strongest	Percentage of Owner-Occupied Homes	68.19%	57.87%
2nd Strongest	Average Available Rent Money less the Average HUD Fair Market Rent	\$1,010.2	\$799.87
Bottom 10 in NC, Weakest	Percentage of People with Commute Times Over 45 Minutes	27.45%	16.69%

Healthcare: 19.02

The healthcare component examines the availability and quality of healthcare facilities, services, and professionals, which are critical for maintaining a healthy and productive workforce. Person County's performance on this dimension is fairly weak when compared to other North Carolina counties, ranking 75th in the state.

Notable variables for Person County within this dimension include:

VARIABLE STRENGTH	FACTOR	PERSON COUNTY VALUE	NC COUNTY AVERAGE VALUE
Strongest	Opioid Deaths per 100,000 Residents	22.8	38.73
2nd Strongest	Physicians per 10,000	7.58	16.05

Bottom 10 in NC, Weakest	Residents		
	Nursing Home Beds per 1,000 Residents of Age 65+	16.92	27.53

Community Cohesion: 53.52

This component looks at the strength of social networks, community engagement, and the ability of residents to work together to address challenges and support one another during times of adversity. Person County's performance on this dimension is average when compared to other North Carolina counties, ranking 60th in the state.

Notable variables for Person County within this dimension include:

VARIABLE STRENGTH	FACTOR	PERSON COUNTY VALUE	NC COUNTY AVERAGE VALUE
Strongest	Percentage of Inactive Voters	8.93%	11.3%
2nd Strongest	Property Crimes per 10,000 Residents	15.52	15.74
Weakest	Violent Crimes per 10,000 Residents	4.06	3.07

Socioeconomics: 50.22

This component considers factors such as income levels, poverty rates, and inequality, which can impact a community's ability to withstand and recover from economic shocks. Person County's performance on this dimension is average when compared to other North Carolina counties, ranking 37th in the state.

Notable variables for Person County within this dimension include:

VARIABLE STRENGTH	FACTOR	PERSON COUNTY VALUE	NC COUNTY AVERAGE VALUE
Top 10 in NC, Strongest	Percentage of Population without Health Insurance	8.43%	11.23%
2nd Strongest	Gini Coefficient (Income Inequality)	0.45	0.46
Weakest	Population 25+ with at least a Bachelor's Degree	17.52%	24.4%

Education: 42.92

This component evaluates the quality of educational institutions and the educational attainment levels of the local population, which play a crucial role in developing a skilled and adaptable workforce. Person County's performance on this dimension is average when compared to other North Carolina counties, ranking 59th in the state.

Notable variables for Person County within this dimension include:

VARIABLE STRENGTH	FACTOR	PERSON COUNTY VALUE	NC COUNTY AVERAGE VALUE
Strongest	Student to Teacher Ratio	13	14
2nd Strongest	Postsecondary Enrollment Percentage	26.49%	25.48%
Weakest	Graduation Percentage	84.1%	88.03%

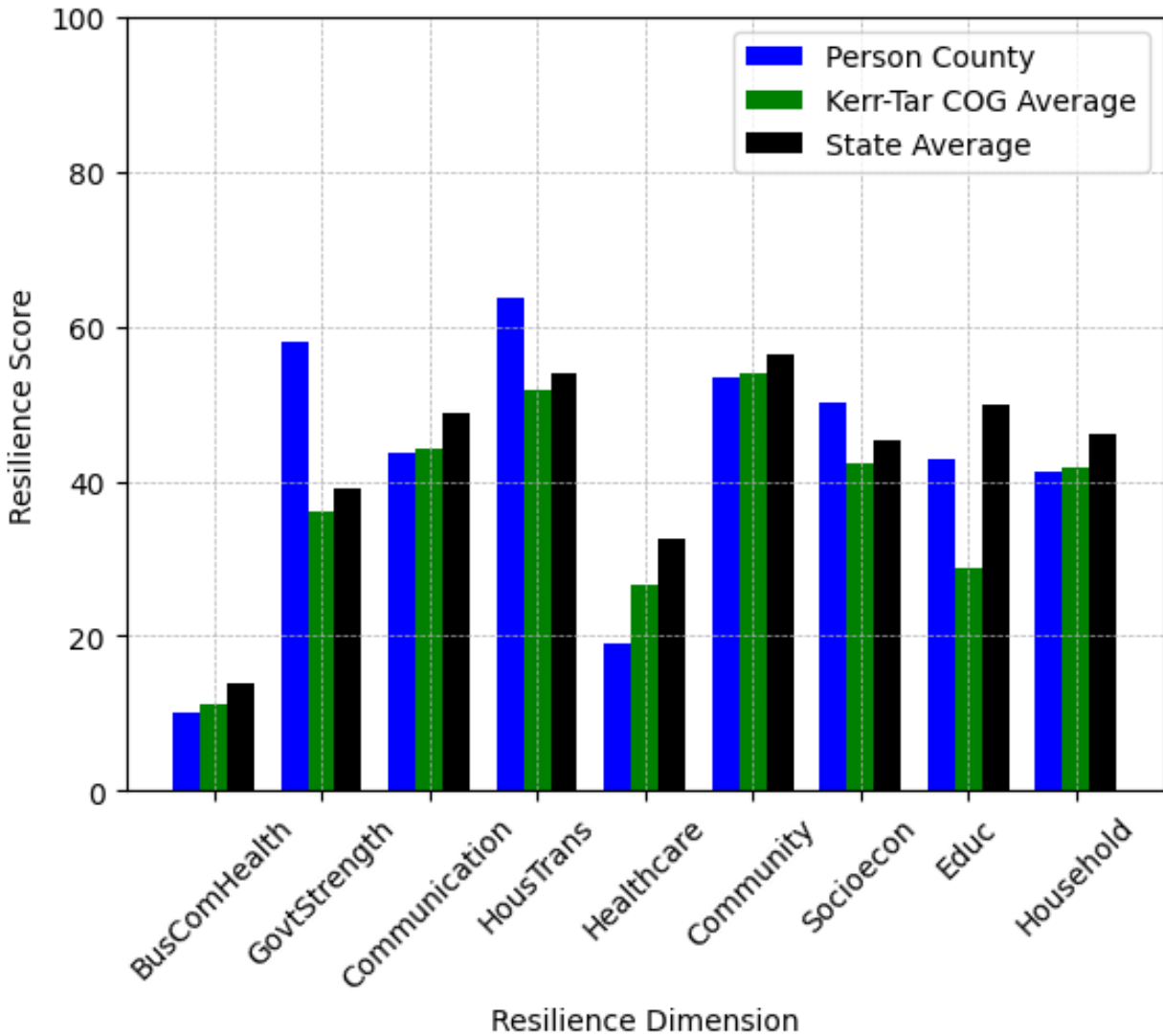
Household Characteristics: 41.32

This component examines factors such as the proportion of single-parent households, age distribution, and the proportion of individuals with disabilities, as these elements can influence a community's resilience and ability to recover from economic disruptions. Person County's performance on this dimension is average when compared to other North Carolina counties, ranking 64th in the state.

Notable variables for Person County within this dimension include:

VARIABLE STRENGTH	FACTOR	PERSON COUNTY VALUE	NC COUNTY AVERAGE VALUE
Strongest	Percentage of Population with Limited English Proficiency	0.388%	1.454%
2nd Strongest	Percentage of Population 65 and Older	20.34%	20.53%
Weakest	Percentage of Population with a Disability	20.159%	16.566%

Person County's Resilience Dimension Scores Over Time As Compared to the Region and State Averages



Note: Resilience Scores are normalized from 1 to 100 with the most resilient county scoring 100. The Resilience Score is determined based on a county's performance relative to NC's other 99 counties.

Notable Trends in Resilience Indicators, 2017-2022

NOTE: The key trends in the this section are identified based on change rates of at least .15 standard deviations over at least 5 years. Variables are positively oriented such that a positive trend indicates improved performance (e.g., 'improvement' in property crime is a lower crime rate, while 'decline' in property crime indicates a higher crime rate).

Trends in the Business Community Health dimension:

Total Employment Level: **-333** (5-year change rate = **-3.35%**, from 9,927 to 9,594)

↓ Change in rank from 65 to 67 in NC

Average Weekly Wages: **159 dollars** (5-year change rate = **20.62%**, from 771 to 930)

↓ Change in rank from 29 to 46 in NC

Real GDP in Current Dollars: **-74,194 dollars** (5-year change rate = **-4.6%**, from 1,611,399 to 1,537,205)

↓ Change in rank from 55 to 60 in NC

Trends in the County Government Fiscal Strength dimension:

Adjusted Tax Base: **9,778 dollars** (5-year change rate = **8.96%**, from 109,178 to 118,956)

↓ Change in rank from 34 to 43 in NC

County Sales Tax: **3,780,306 dollars** (5-year change rate = **50.8%**, from 7,442,054 to 11,222,361)

↓ Change in rank from 64 to 66 in NC

Trends in the Housing & Transportation dimension:

Ratio of Average Estimated Home Value to Median Income : **3.22** (5-year change rate = **42.84%**, from 7.51 to 10.73)

↓ Change in rank from 58 to 61 in NC

Average Available Rent Money less the Average HUD Fair Market Rent: **399.1 dollars** (5-year change rate = **65.31%**, from 611.1 to 1,010.2)

↑ Change in rank from 26 to 24 in NC

Trends in the Healthcare dimension:

Opioid Deaths per 100,000 Residents: **5** (5-year change rate = **28.09%**, from 17.8 to 22.8)

↑ Change in rank from 30 to 15 in NC

Nurses per 10,000 Residents: **-13.24** (5-year change rate = **-14.15%**, from 93.57 to 80.33)

↓ Change in rank from 79 to 84 in NC

Physicians per 10,000 Residents: **-1.69** (5-year change rate = **-18.23%**, from 9.27 to 7.58)

↓ Change in rank from 62 to 76 in NC

Mental Health Professionals per 10,000 Residents: **0.44** (5-year change rate = **13.13%**, from 3.35 to 3.79)

↑ Change in rank from 82 to 80 in NC

Trends in the Socioeconomics dimension:

Unemployment Rate (Q4): **-0.6 percent** (5-year change rate = **-13.28%**, from 4.3 to 3.7)

↓ Change in rank from 47 to 57 in NC

Median Household Income: **20,700 dollars** (5-year change rate = **39.58%**, from 52,300 to 73,000)

↑ Change in rank from 49 to 38 in NC

Trends in the Education dimension:

Graduation Percentage: **5.1 percent** (5-year change rate = **6.46%**, from 79 to 84.1)

↑ Change in rank from 95 to 85 in NC

Dropout Rate: **-1.37 percent** (5-year change rate = **-49.55%**, from 2.76 to 1.39)

↑ Change in rank from 71 to 39 in NC

Student to Teacher Ratio: **-1** (4-year change rate = **-5.28%**, from 14 to 13)

→ No change in rank

3rd Grade Reading Proficiency: **-12.4 percent** (5-year change rate = **-23.09%**, from 53.7 to 41.3)

↓ Change in rank from 51 to 59 in NC

Data Advisements:

- Availability of Broadband Services is not available for 2022 and was excluded from calculating this county's dimension and resilience score.
- Adoption Rate of Broadband Services is not available for 2022 and was excluded from calculating this county's dimension and resilience score.