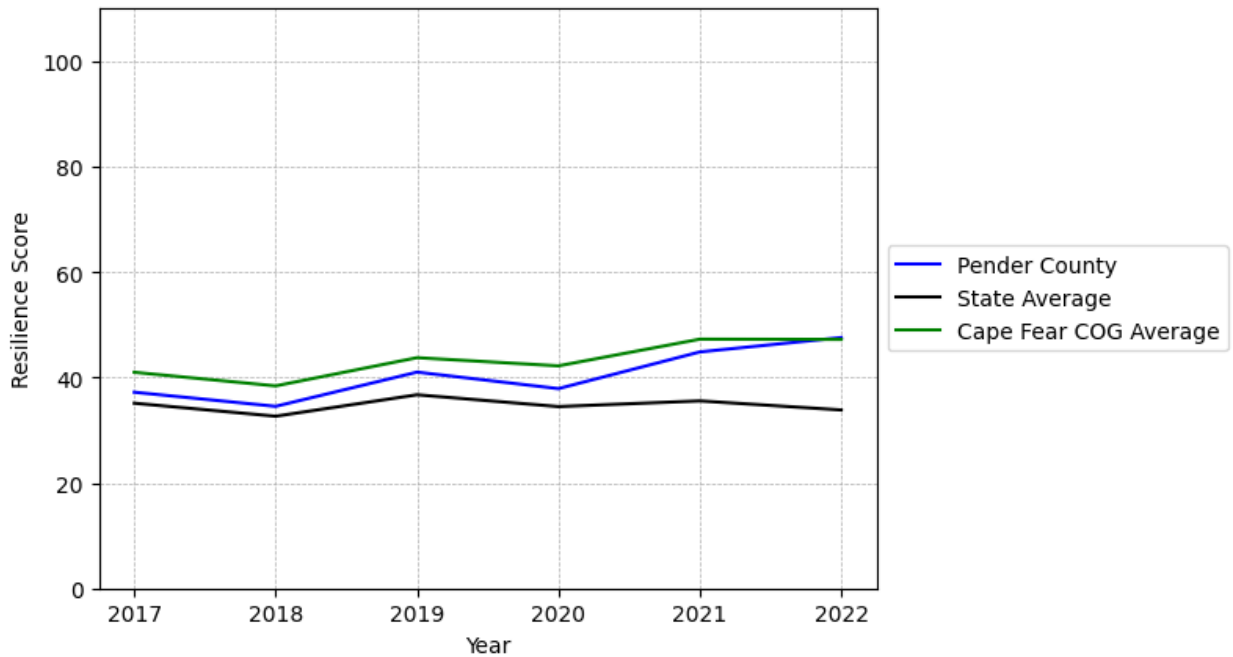


Pender County Summary

Resilience Score: 47.56

In 2022, Pender County achieved a Resilience Score of 47.56, which is fairly strong as compared to the North Carolina State average.

**Pender County's Resilience Score Over Time
As Compared to the Region and State Averages**



Note: Resilience Scores are normalized from 1 to 100 with the most resilient county scoring 100. The Resilience Score is determined based on a county's performance relative to NC's other 99 counties.

Pender County's Resilience Score is comprised of 9 distinct dimensions of resilience. Below are Pender County's scores for 2022 on those 9 dimensions, and their rank relative to other North Carolina counties.

Business Community Health: 9.11

This component examines the strength and diversity of the local business community, including factors such as the number of businesses, employment levels, and industry diversity. Pender County's performance on this dimension is average when compared to other North Carolina counties, ranking 63rd in the state.

Notable variables for Pender County within this dimension include:

VARIABLE STRENGTH	FACTOR	PENDER COUNTY VALUE	NC COUNTY AVERAGE VALUE
Strongest	Percentage of Companies in Science, Engineering, & Technology Industries	8.3%	6.13%
2nd Strongest	Science, Engineering, & Technology Industries Employment Percentage	1.33%	1.79%
Weakest	Ratio of Available Child Care Slots to Number of Children under Five	0.46	0.59

County Government Fiscal Strength: 42.64

This component looks at the financial health of local governments, including their ability to generate revenue, manage debt, and maintain adequate reserves to weather economic downturns. Pender County's performance on this dimension is average when compared to other North Carolina counties, ranking 51st in the state.

Notable variables for Pender County within this dimension include:

VARIABLE STRENGTH	FACTOR	PENDER COUNTY VALUE	NC COUNTY AVERAGE VALUE
Top 10 in NC, Strongest	Debt Service Ratio of County Government	0.01	0.07
2nd Strongest	Solvency Ratio of County Government	69.17	46.7
Bottom 10 in NC, Weakest	Dependency Ratio of County Government	0.3	0.16

Communication: 51.72

This component assesses the availability and quality of communication infrastructure, such as broadband internet access, which is crucial for businesses and residents to stay connected and

resilient during disruptions. Pender County's performance on this dimension is average when compared to other North Carolina counties, ranking 43rd in the state.

Notable variables for Pender County within this dimension include:

VARIABLE STRENGTH	FACTOR	PENDER COUNTY VALUE	NC COUNTY AVERAGE VALUE
Strongest	Percentage of Population without Smartphones	13.25%	17.22%
2nd Strongest	Local High-Speed Mobile Data Availability	0.67	0.66
Weakest	Broadband Availability	0.55	0.6

Housing & Transportation: 78.68

This component evaluates the accessibility and affordability of housing, as well as the availability of reliable transportation options, which are essential for a resilient workforce and economy. Pender County's performance on this dimension is fairly strong when compared to other North Carolina counties, ranking 18th in the state.

Notable variables for Pender County within this dimension include:

VARIABLE STRENGTH	FACTOR	PENDER COUNTY VALUE	NC COUNTY AVERAGE VALUE
Top 10 in NC, Strongest	Percentage of Homes Built Before 1980	22.57%	40.9%
Top 10 in NC, 2nd Strongest	Percentage of Population without Vehicles	3.09%	5.75%
Weakest	Percentage of People with Commute Times Over 45 Minutes	22.29%	16.69%

Healthcare: 36.9

The healthcare component examines the availability and quality of healthcare facilities, services, and professionals, which are critical for maintaining a healthy and productive workforce. Pender County's performance on this dimension is fairly strong when compared to other North Carolina counties, ranking 16th in the state.

Notable variables for Pender County within this dimension include:

VARIABLE STRENGTH	FACTOR	PENDER COUNTY VALUE	NC COUNTY AVERAGE VALUE
-------------------	--------	---------------------	-------------------------

Top 10 in NC, Strongest	Nursing Home Beds per 1,000 Residents of Age 65+	51.03	27.53
2nd Strongest	Mental Health Professionals per 10,000 Residents	7.51	6.6
Bottom 10 in NC, Weakest	Physicians per 10,000 Residents	3.22	16.05

Community Cohesion: 80.65

This component looks at the strength of social networks, community engagement, and the ability of residents to work together to address challenges and support one another during times of adversity. Pender County's performance on this dimension is strong when compared to other North Carolina counties, ranking 6th in the state.

Notable variables for Pender County within this dimension include:

VARIABLE STRENGTH	FACTOR	PENDER COUNTY VALUE	NC COUNTY AVERAGE VALUE
Top 10 in NC, Strongest	Yearly Population Change Percentage	4.371%	0.906%
2nd Strongest	Property Crimes per 10,000 Residents	10.64	15.74
Weakest	Nonprofits Organizations per 1,000 Residents	3.49	3.17

Socioeconomics: 66.8

This component considers factors such as income levels, poverty rates, and inequality, which can impact a community's ability to withstand and recover from economic shocks. Pender County's performance on this dimension is strong when compared to other North Carolina counties, ranking 17th in the state.

Notable variables for Pender County within this dimension include:

VARIABLE STRENGTH	FACTOR	PENDER COUNTY VALUE	NC COUNTY AVERAGE VALUE
Strongest	Total Percentage of Population Below 150% Poverty Line	18.82%	25.93%
2nd Strongest	Percentage of Households with Income over \$200k	7.15%	5.28%
Weakest	Unemployment Rate (Q4)	3.4%	3.9%

Education: 48.41

This component evaluates the quality of educational institutions and the educational attainment levels of the local population, which play a crucial role in developing a skilled and adaptable workforce. Pender County's performance on this dimension is average when compared to other North Carolina counties, ranking 47th in the state.

Notable variables for Pender County within this dimension include:

VARIABLE STRENGTH	FACTOR	PENDER COUNTY VALUE	NC COUNTY AVERAGE VALUE
Top 10 in NC, Strongest	Graduation Percentage	93.5%	88.03%
2nd Strongest	Postsecondary Enrollment Percentage	31.29%	25.48%
Bottom 10 in NC, Weakest	Student to Teacher Ratio	17	14

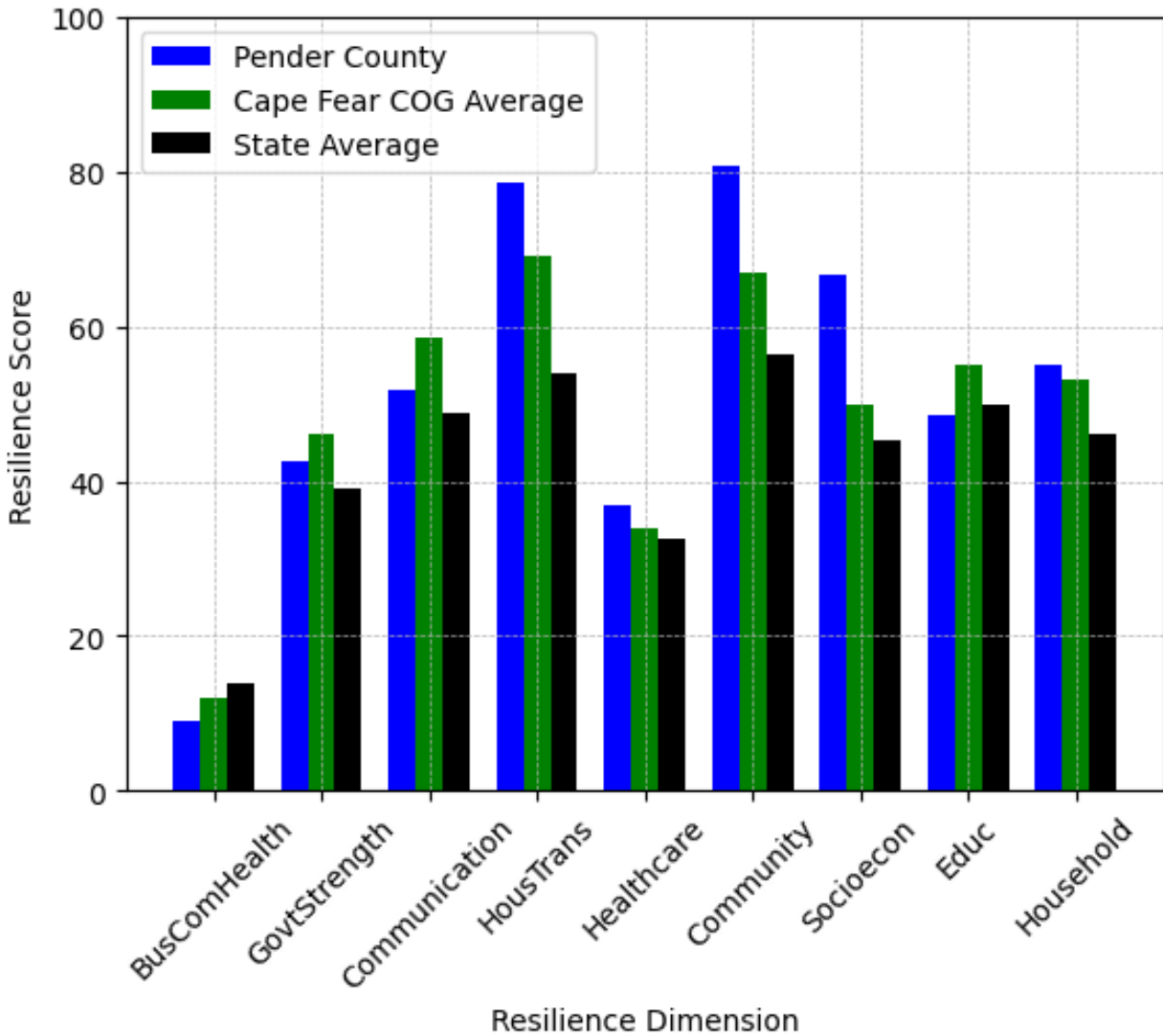
Household Characteristics: 54.97

This component examines factors such as the proportion of single-parent households, age distribution, and the proportion of individuals with disabilities, as these elements can influence a community's resilience and ability to recover from economic disruptions. Pender County's performance on this dimension is fairly strong when compared to other North Carolina counties, ranking 20th in the state.

Notable variables for Pender County within this dimension include:

VARIABLE STRENGTH	FACTOR	PENDER COUNTY VALUE	NC COUNTY AVERAGE VALUE
Strongest	Percentage of Single Parent Households	24.873%	36.132%
2nd Strongest	Percentage of Population 65 and Older	18.01%	20.53%
Weakest	Percentage of Population 17 and Younger	22.09%	20.37%

Pender County's Resilience Dimension Scores Over Time As Compared to the Region and State Averages



Note: Resilience Scores are normalized from 1 to 100 with the most resilient county scoring 100. The Resilience Score is determined based on a county's performance relative to NC's other 99 counties.

Notable Trends in Resilience Indicators, 2017-2022

NOTE: The key trends in the this section are identified based on change rates of at least .15 standard deviations over at least 5 years. Variables are positively oriented such that a positive trend indicates improved performance (e.g., 'improvement' in property crime is a lower crime rate, while 'decline' in property crime indicates a higher crime rate).

Trends in the Business Community Health dimension:

Total Employment Level: **2,561** (5-year change rate = **22.18%**, from 11,547 to 14,108)

↑ Change in rank from 63 to 59 in NC

Average Weekly Wages: **204 dollars** (5-year change rate = **29.35%**, from 695 to 899)

↑ Change in rank from 64 to 59 in NC

Real GDP in Current Dollars: **303,350 dollars** (5-year change rate = **20.58%**, from 1,473,836 to 1,777,186)

↑ Change in rank from 61 to 54 in NC

Trends in the County Government Fiscal Strength dimension:

Adjusted Tax Base: **23,077 dollars** (5-year change rate = **21.03%**, from 109,732 to 132,809)

↑ Change in rank from 33 to 32 in NC

County Sales Tax: **8,006,016 dollars** (5-year change rate = **75.17%**, from 10,650,778 to 18,656,794)

↑ Change in rank from 48 to 45 in NC

Trends in the Housing & Transportation dimension:

Ratio of Average Estimated Home Value to Median Income : **2.41** (5-year change rate = **30.37%**, from 7.94 to 10.35)

↑ Change in rank from 60 to 59 in NC

Average Available Rent Money less the Average HUD Fair Market Rent: **416.2 dollars** (5-year change rate = **69.45%**, from 599.3 to 1,015.5)

↑ Change in rank from 29 to 23 in NC

Trends in the Healthcare dimension:

Opioid Deaths per 100,000 Residents: **5.4** (5-year change rate = **19.35%**, from 27.9 to 33.3)

↑ Change in rank from 59 to 38 in NC

Nurses per 10,000 Residents: **10.64** (5-year change rate = **8.99%**, from 118.32 to 128.96)

↑ Change in rank from 67 to 63 in NC

Physicians per 10,000 Residents: **-0.73** (5-year change rate = **-18.48%**, from 3.95 to 3.22)

↓ Change in rank from 88 to 94 in NC

Mental Health Professionals per 10,000 Residents: **0.46** (5-year change rate = **6.52%**, from 7.05 to 7.51)

↓ Change in rank from 25 to 31 in NC

Trends in the Community Cohesion dimension:

Violent Crimes per 10,000 Residents: **0.33** (4-year change rate = **20.14%**, from 1.64 to 1.97)

↓ Change in rank from 32 to 35 in NC

Property Crimes per 10,000 Residents: **-6.08** (4-year change rate = **-36.39%**, from 16.72 to 10.64)

↑ Change in rank from 44 to 20 in NC

Nonprofits Organizations per 1,000 Residents: **0.68** (5-year change rate = **24.3%**, from 2.81 to 3.49)

↑ Change in rank from 49 to 40 in NC

Trends in the Socioeconomics dimension:

Unemployment Rate (Q4): **-1 percent** (5-year change rate = **-23.13%**, from 4.5 to 3.4)

↑ Change in rank from 60 to 34 in NC

Median Household Income: **23,400 dollars** (5-year change rate = **40.98%**, from 57,100 to 80,500)

↑ Change in rank from 28 to 20 in NC

Trends in the Education dimension:

Graduation Percentage: **2.4 percent** (5-year change rate = **2.63%**, from 91.1 to 93.5)

↑ Change in rank from 24 to 8 in NC

Dropout Rate: **-0.86 percent** (5-year change rate = **-46.57%**, from 1.85 to 0.99)

↑ Change in rank from 35 to 24 in NC

Student to Teacher Ratio: **1** (4-year change rate = **7.82%**, from 15 to 17)

↓ Change in rank from 72 to 96 in NC

3rd Grade Reading Proficiency: **-8.3 percent** (5-year change rate = **-15.4%**, from 53.9 to 45.6)

↑ Change in rank from 49 to 40 in NC

Data Advisements:

- Availability of Broadband Services is not available for 2022 and was excluded from calculating this county's dimension and resilience score.
- Adoption Rate of Broadband Services is not available for 2022 and was excluded from calculating this county's dimension and resilience score.