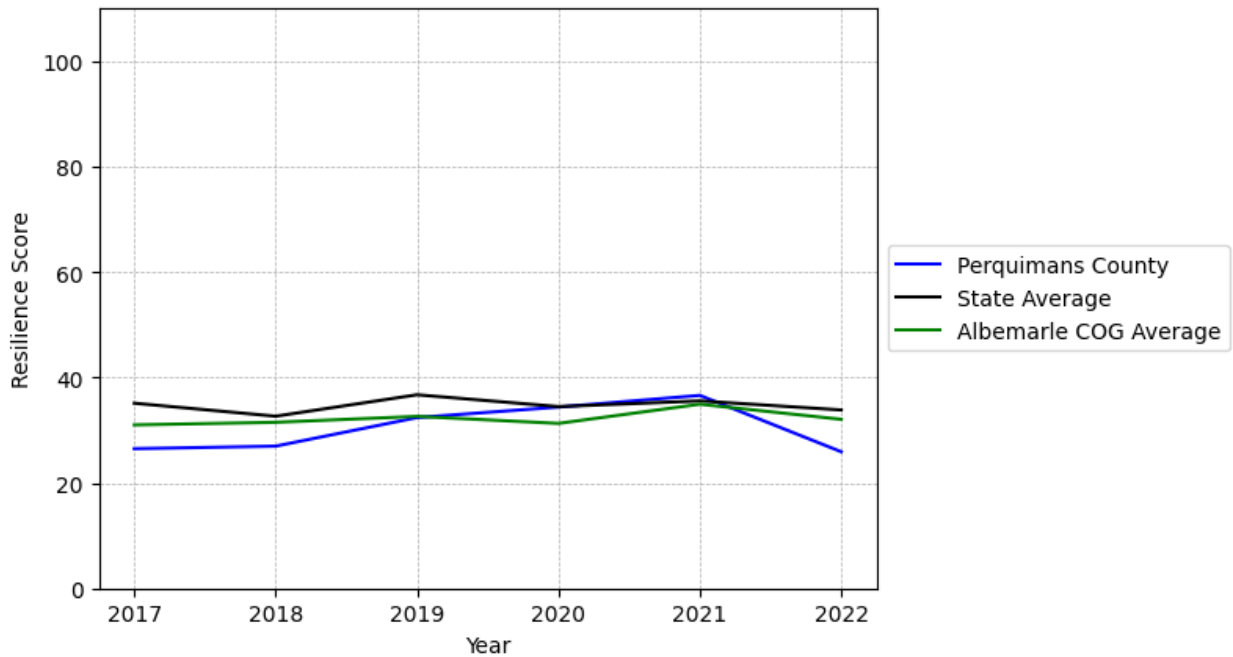


Perquimans County Summary

Resilience Score: 25.91

In 2022, Perquimans County achieved a Resilience Score of 25.91, which is average as compared to the North Carolina State average.

**Perquimans County's Resilience Score Over Time
As Compared to the Region and State Averages**



Note: Resilience Scores are normalized from 1 to 100 with the most resilient county scoring 100. The Resilience Score is determined based on a county's performance relative to NC's other 99 counties.

Perquimans County's Resilience Score is comprised of 9 distinct dimensions of resilience. Below are Perquimans County's scores for 2022 on those 9 dimensions, and their rank relative to other North Carolina counties.

Business Community Health: 16.36

This component examines the strength and diversity of the local business community, including factors such as the number of businesses, employment levels, and industry diversity. Perquimans County's performance on this dimension is average when compared to other North Carolina counties, ranking 23rd in the state.

Notable variables for Perquimans County within this dimension include:

VARIABLE STRENGTH	FACTOR	PERQUIMANS COUNTY VALUE	NC COUNTY AVERAGE VALUE
Top 10 in NC, Strongest	Private Sector Diversity	0.603	0.28
2nd Strongest	Percentage of Companies in Science, Engineering, & Technology Industries	7.17%	6.13%
Bottom 10 in NC	Real GDP in Current Dollars	\$283,881	\$6,092,555
Bottom 10 in NC	Total Employment Level	2,452	45,758
Bottom 10 in NC, Weakest	Average Weekly Wages	\$805	\$951

County Government Fiscal Strength: 59.59

This component looks at the financial health of local governments, including their ability to generate revenue, manage debt, and maintain adequate reserves to weather economic downturns. Perquimans County's performance on this dimension is fairly strong when compared to other North Carolina counties, ranking 20th in the state.

Notable variables for Perquimans County within this dimension include:

VARIABLE STRENGTH	FACTOR	PERQUIMANS COUNTY VALUE	NC COUNTY AVERAGE VALUE
Top 10 in NC, Strongest	Quick Ratio of County Government	69.13	16.4
2nd Strongest	Dependency Ratio of County Government	0.12	0.16
Bottom 10 in NC, Weakest	County Sales Tax	\$2,856,609	\$31,151,902

Communication: 30.36

This component assesses the availability and quality of communication infrastructure, such as broadband internet access, which is crucial for businesses and residents to stay connected and

resilient during disruptions. Perquimans County's performance on this dimension is weak when compared to other North Carolina counties, ranking 89th in the state.

Notable variables for Perquimans County within this dimension include:

VARIABLE STRENGTH	FACTOR	PERQUIMANS COUNTY VALUE	NC COUNTY AVERAGE VALUE
Strongest	In-Vehicle High-Speed Mobile Data Availability	0.25	0.37
2nd Strongest	Percentage of Population without Smartphones	21.61%	17.22%
Bottom 10 in NC, Weakest	Broadband Availability	0.41	0.6

Housing & Transportation: 45.94

This component evaluates the accessibility and affordability of housing, as well as the availability of reliable transportation options, which are essential for a resilient workforce and economy.

Perquimans County's performance on this dimension is fairly weak when compared to other North Carolina counties, ranking 75th in the state.

Notable variables for Perquimans County within this dimension include:

VARIABLE STRENGTH	FACTOR	PERQUIMANS COUNTY VALUE	NC COUNTY AVERAGE VALUE
Strongest	Percentage of Population without Vehicles	4.01%	5.75%
2nd Strongest	Percentage of Households with More Residents than Rooms	1.4%	2.1%
Bottom 10 in NC	Ratio of Average Estimated Home Value to Median Income	37.91	13.67
Bottom 10 in NC, Weakest	Percentage of People with Commute Times Over 45 Minutes	33.07%	16.69%

Healthcare: 7.68

The healthcare component examines the availability and quality of healthcare facilities, services, and professionals, which are critical for maintaining a healthy and productive workforce.

Perquimans County's performance on this dimension is weak when compared to other North Carolina counties, ranking 97th in the state.

Notable variables for Perquimans County within this dimension include:

VARIABLE STRENGTH	FACTOR	PERQUIMANS COUNTY VALUE	NC COUNTY AVERAGE VALUE
Strongest	Nursing Home Beds per 1,000 Residents of Age 65+	20.86	27.53
2nd Strongest	Opioid Deaths per 100,000 Residents	52	38.73
Bottom 10 in NC	Mental Health Professionals per 10,000 Residents	2.23	6.6
Bottom 10 in NC	Nurses per 10,000 Residents	39.8	262.64
Bottom 10 in NC, Weakest	Physicians per 10,000 Residents	0.74	16.05

Community Cohesion: 57.47

This component looks at the strength of social networks, community engagement, and the ability of residents to work together to address challenges and support one another during times of adversity. Perquimans County's performance on this dimension is average when compared to other North Carolina counties, ranking 49th in the state.

Notable variables for Perquimans County within this dimension include:

VARIABLE STRENGTH	FACTOR	PERQUIMANS COUNTY VALUE	NC COUNTY AVERAGE VALUE
Strongest	Property Crimes per 10,000 Residents	9.46	15.74
2nd Strongest	Nonprofits Organizations per 1,000 Residents	4.19	3.17
Weakest	Percentage of Inactive Voters	14.27%	11.3%

Socioeconomics: 46.19

This component considers factors such as income levels, poverty rates, and inequality, which can impact a community's ability to withstand and recover from economic shocks. Perquimans County's performance on this dimension is average when compared to other North Carolina counties, ranking 50th in the state.

Notable variables for Perquimans County within this dimension include:

VARIABLE STRENGTH	FACTOR	PERQUIMANS COUNTY VALUE	NC COUNTY AVERAGE VALUE
Top 10 in NC, Strongest	Gini Coefficient (Income Inequality)	0.4	0.46
2nd Strongest	Total Percentage of Population Below 150% Poverty Line	22.49%	25.93%
Weakest	Percentage of Households with Income over \$200k	2.39%	5.28%

Education: 57.85

This component evaluates the quality of educational institutions and the educational attainment levels of the local population, which play a crucial role in developing a skilled and adaptable workforce. Perquimans County's performance on this dimension is fairly strong when compared to other North Carolina counties, ranking 24th in the state.

Notable variables for Perquimans County within this dimension include:

VARIABLE STRENGTH	FACTOR	PERQUIMANS COUNTY VALUE	NC COUNTY AVERAGE VALUE
Top 10 in NC, Strongest	Teacher Attrition Rate	0.05	0.12
2nd Strongest	Postsecondary Enrollment Percentage	30.24%	25.48%
Weakest	Graduation Percentage	88.1%	88.03%

Household Characteristics: 32.58

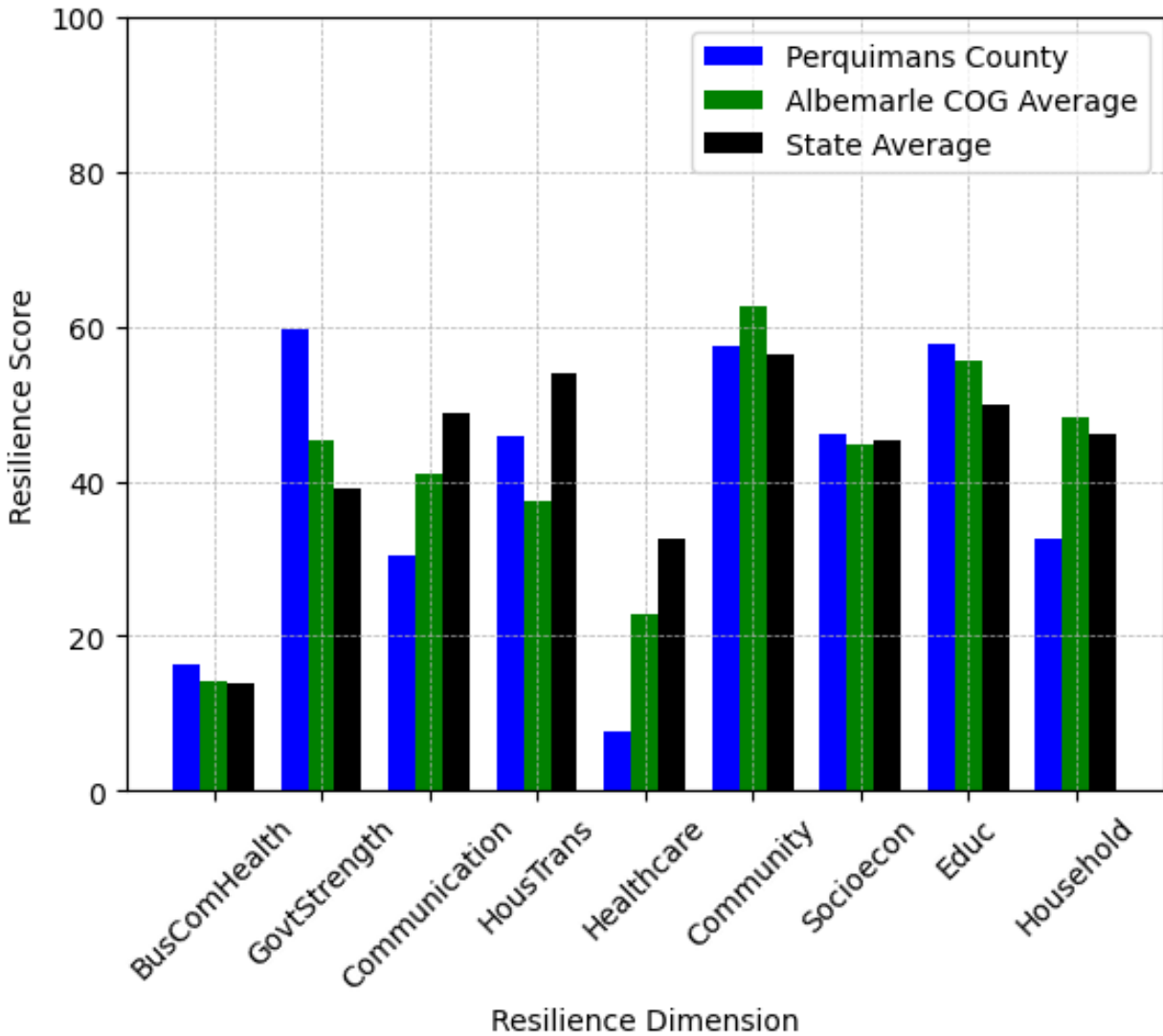
This component examines factors such as the proportion of single-parent households, age distribution, and the proportion of individuals with disabilities, as these elements can influence a community's resilience and ability to recover from economic disruptions. Perquimans County's performance on this dimension is fairly weak when compared to other North Carolina counties, ranking 85th in the state.

Notable variables for Perquimans County within this dimension include:

VARIABLE STRENGTH	FACTOR	PERQUIMANS COUNTY VALUE	NC COUNTY AVERAGE VALUE
Top 10 in NC, Strongest	Percentage of Population with Limited English Proficiency	0.176%	1.454%
2nd Strongest	Percentage of Population 17 and Younger	18.6%	20.37%
Bottom 10 in NC	Percentage of Population	28.05%	20.53%

	65 and Older		
Bottom 10 in NC, Weakest	Percentage of Population with a Disability	20.941%	16.566%

Perquimans County's Resilience Dimension Scores Over Time As Compared to the Region and State Averages



Note: Resilience Scores are normalized from 1 to 100 with the most resilient county scoring 100. The Resilience Score is determined based on a county's performance relative to NC's other 99 counties.

Notable Trends in Resilience Indicators, 2017-2022

NOTE: The key trends in the this section are identified based on change rates of at least .15 standard deviations over at least 5 years. Variables are positively oriented such that a positive trend indicates improved performance (e.g., 'improvement' in property crime is a lower crime rate, while 'decline' in property crime indicates a higher crime rate).

Trends in the Business Community Health dimension:

Total Employment Level: **357** (5-year change rate = **17.04%**, from 2,095 to 2,452)

→ No change in rank

Average Weekly Wages: **135 dollars** (5-year change rate = **20.15%**, from 670 to 805)

↓ Change in rank from 83 to 93 in NC

Real GDP in Current Dollars: **13,132 dollars** (5-year change rate = **4.85%**, from 270,749 to 283,881)

→ No change in rank

Trends in the County Government Fiscal Strength dimension:

Adjusted Tax Base: **-2,654 dollars** (5-year change rate = **-2.03%**, from 130,643 to 127,989)

↓ Change in rank from 19 to 36 in NC

County Sales Tax: **893,665 dollars** (5-year change rate = **45.53%**, from 1,962,944 to 2,856,609)

↓ Change in rank from 93 to 95 in NC

Trends in the Housing & Transportation dimension:

Ratio of Average Estimated Home Value to Median Income : **9.78** (5-year change rate = **34.75%**, from 28.14 to 37.91)

↓ Change in rank from 93 to 94 in NC

Average Available Rent Money less the Average HUD Fair Market Rent: **258 dollars** (5-year change rate = **49.77%**, from 518.4 to 776.4)

↑ Change in rank from 50 to 49 in NC

Trends in the Healthcare dimension:

Opioid Deaths per 100,000 Residents: **44.6** (5-year change rate = **602.7%**, from 7.4 to 52)

↓ Change in rank from 6 to 84 in NC

Nurses per 10,000 Residents: **-4.11** (5-year change rate = **-9.36%**, from 43.91 to 39.8)

↑ Change in rank from 97 to 96 in NC

Physicians per 10,000 Residents: **-1.56** (5-year change rate = **-67.83%**, from 2.3 to 0.74)

↓ Change in rank from 93 to 98 in NC

Mental Health Professionals per 10,000 Residents: **-3.9** (5-year change rate = **-63.62%**, from 6.13 to 2.23)

↓ Change in rank from 42 to 95 in NC

Trends in the Community Cohesion dimension:

Violent Crimes per 10,000 Residents: **1.52** (4-year change rate = **140.78%**, from 1.08 to 2.59)

↓ Change in rank from 17 to 51 in NC

Property Crimes per 10,000 Residents: **-0.31** (4-year change rate = **-3.2%**, from 9.77 to 9.46)

↓ Change in rank from 14 to 17 in NC

Nonprofits Organizations per 1,000 Residents: **0.39** (5-year change rate = **10.18%**, from 3.8 to 4.19)

↑ Change in rank from 27 to 21 in NC

Trends in the Socioeconomics dimension:

Unemployment Rate (Q4): **-1.2 percent** (5-year change rate = **-21.95%**, from 5.5 to 4.3)

↑ Change in rank from 83 to 78 in NC

Median Household Income: **16,000 dollars** (5-year change rate = **29.85%**, from 53,600 to 69,600)

↓ Change in rank from 44 to 48 in NC

Trends in the Education dimension:

Graduation Percentage: **-3.1 percent** (5-year change rate = **-3.4%**, from 91.2 to 88.1)

↓ Change in rank from 23 to 51 in NC

Dropout Rate: **-1.44 percent** (5-year change rate = **-55.83%**, from 2.58 to 1.14)

↑ Change in rank from 65 to 29 in NC

Student to Teacher Ratio: **-3** (4-year change rate = **-17.97%**, from 17 to 14)

↑ Change in rank from 96 to 46 in NC

3rd Grade Reading Proficiency: **-12.1 percent** (5-year change rate = **-20.83%**, from 58.1 to 46)

↓ Change in rank from 32 to 38 in NC

Teacher Attrition Rate: **-0.19** (5-year change rate = **-78.21%**, from 0.25 to 0.05)

↑ Change in rank from 96 to 1 in NC

Data Advisements:

- This county has a population under 20,000 residents according to the US Census Bureau; in low population areas, some variable estimates can be less stable and more sensitive to changes.
- Availability of Broadband Services is not available for 2022 and was excluded from calculating this county's dimension and resilience score.
- Adoption Rate of Broadband Services is not available for 2022 and was excluded from calculating this county's dimension and resilience score.