

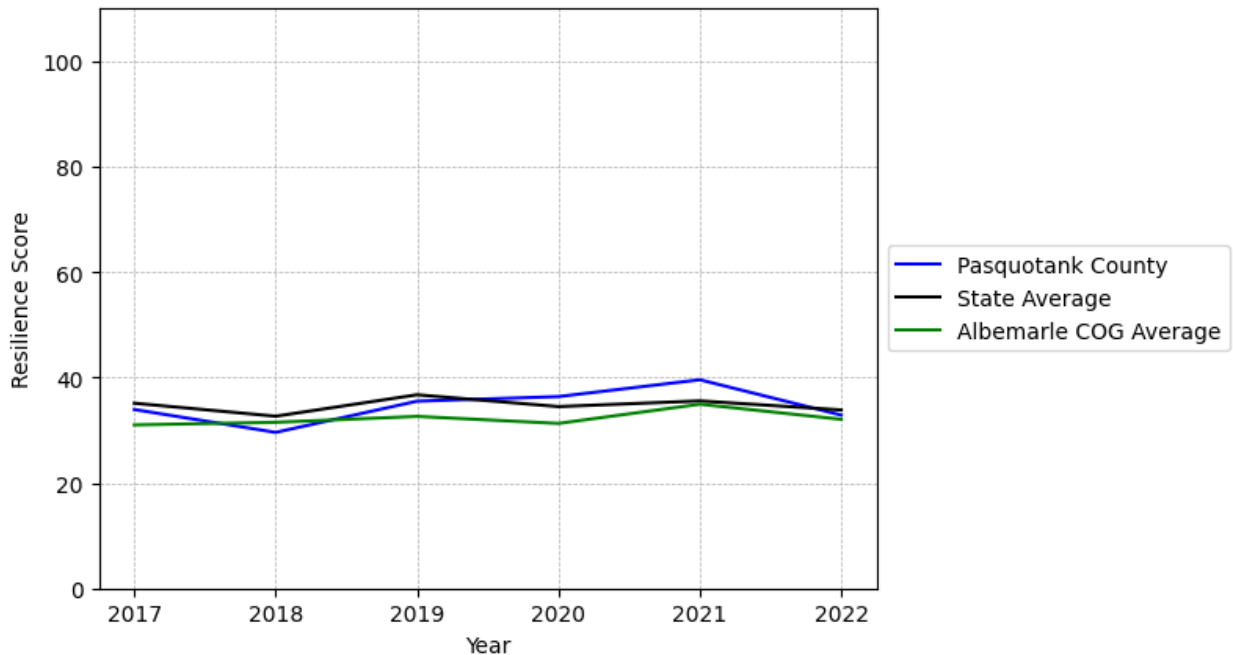
# Pasquotank County Summary

---

**Resilience Score: 32.86**

In 2022, Pasquotank County achieved a Resilience Score of 32.86, which is average as compared to the North Carolina State average.

**Pasquotank County's Resilience Score Over Time  
As Compared to the Region and State Averages**



*Note: Resilience Scores are normalized from 1 to 100 with the most resilient county scoring 100. The Resilience Score is determined based on a county's performance relative to NC's other 99 counties.*

Pasquotank County's Resilience Score is comprised of 9 distinct dimensions of resilience. Below are Pasquotank County's scores for 2022 on those 9 dimensions, and their rank relative to other North Carolina counties.

**Business Community Health: 14.02**

This component examines the strength and diversity of the local business community, including factors such as the number of businesses, employment levels, and industry diversity. Pasquotank County's performance on this dimension is average when compared to other North Carolina counties, ranking 32nd in the state.

Notable variables for Pasquotank County within this dimension include:

VARIABLE STRENGTH	FACTOR	PASQUOTANK COUNTY VALUE	NC COUNTY AVERAGE VALUE
Strongest	Science, Engineering, & Technology Industries Employment Percentage	2.26%	1.79%
2nd Strongest	Ratio of Available Child Care Slots to Number of Children under Five	0.67	0.59
Weakest	Real GDP in Current Dollars	\$1,609,108	\$6,092,555

**County Government Fiscal Strength: 33.84**

This component looks at the financial health of local governments, including their ability to generate revenue, manage debt, and maintain adequate reserves to weather economic downturns. Pasquotank County's performance on this dimension is average when compared to other North Carolina counties, ranking 68th in the state.

Notable variables for Pasquotank County within this dimension include:

VARIABLE STRENGTH	FACTOR	PASQUOTANK COUNTY VALUE	NC COUNTY AVERAGE VALUE
Strongest	Dependency Ratio of County Government	0.11	0.16
2nd Strongest	Solvency Ratio of County Government	53.11	46.7
Weakest	Capital Assets Condition Ratio of County Government	0.4	0.51

**Communication: 50.66**

This component assesses the availability and quality of communication infrastructure, such as broadband internet access, which is crucial for businesses and residents to stay connected and

resilient during disruptions. Pasquotank County's performance on this dimension is average when compared to other North Carolina counties, ranking 49th in the state.

Notable variables for Pasquotank County within this dimension include:

VARIABLE STRENGTH	FACTOR	PASQUOTANK COUNTY VALUE	NC COUNTY AVERAGE VALUE
<b>Strongest</b>	Percentage of Population without Smartphones	14.71%	17.22%
<b>2nd Strongest</b>	In-Vehicle High-Speed Mobile Data Availability	0.34	0.37
<b>Weakest</b>	Local High-Speed Mobile Data Availability	0.58	0.66

### **Housing & Transportation: 68.71**

This component evaluates the accessibility and affordability of housing, as well as the availability of reliable transportation options, which are essential for a resilient workforce and economy.

Pasquotank County's performance on this dimension is average when compared to other North Carolina counties, ranking 36th in the state.

Notable variables for Pasquotank County within this dimension include:

VARIABLE STRENGTH	FACTOR	PASQUOTANK COUNTY VALUE	NC COUNTY AVERAGE VALUE
<b>Top 10 in NC, Strongest</b>	Percentage of Households with More Residents than Rooms	0.52%	2.1%
<b>2nd Strongest</b>	Percentage of People Driving Alone to Work	83.09%	86.36%
<b>Bottom 10 in NC, Weakest</b>	Percentage of People with Commute Times Over 45 Minutes	26.84%	16.69%

### **Healthcare: 42.36**

The healthcare component examines the availability and quality of healthcare facilities, services, and professionals, which are critical for maintaining a healthy and productive workforce.

Pasquotank County's performance on this dimension is fairly strong when compared to other North Carolina counties, ranking 12th in the state.

Notable variables for Pasquotank County within this dimension include:

VARIABLE STRENGTH	FACTOR	PASQUOTANK COUNTY VALUE	NC COUNTY AVERAGE VALUE
Top 10 in NC, Strongest	Nursing Home Beds per 1,000 Residents of Age 65+	40.14	27.53
Top 10 in NC, 2nd Strongest	Physicians per 10,000 Residents	27.97	16.05
Weakest	Opioid Deaths per 100,000 Residents	30.1	38.73

### Community Cohesion: 27.15

This component looks at the strength of social networks, community engagement, and the ability of residents to work together to address challenges and support one another during times of adversity. Pasquotank County's performance on this dimension is weak when compared to other North Carolina counties, ranking 94th in the state.

Notable variables for Pasquotank County within this dimension include:

VARIABLE STRENGTH	FACTOR	PASQUOTANK COUNTY VALUE	NC COUNTY AVERAGE VALUE
Strongest	Violent Crimes per 10,000 Residents	3.86	3.07
2nd Strongest	Property Crimes per 10,000 Residents	19.76	15.74
Bottom 10 in NC	Nonprofits Organizations per 1,000 Residents	1.07	3.17
Bottom 10 in NC, Weakest	Percentage of Inactive Voters	17.25%	11.3%

### Socioeconomics: 46.64

This component considers factors such as income levels, poverty rates, and inequality, which can impact a community's ability to withstand and recover from economic shocks. Pasquotank County's performance on this dimension is average when compared to other North Carolina counties, ranking 47th in the state.

Notable variables for Pasquotank County within this dimension include:

VARIABLE STRENGTH	FACTOR	PASQUOTANK COUNTY VALUE	NC COUNTY AVERAGE VALUE
Strongest	Total Percentage of Population Below 150% Poverty Line	21.06%	25.93%

<b>2nd Strongest</b>	Percentage of Population without a High School Diploma	7.09%	9.05%
<b>Weakest</b>	Percentage of Households Spending more than 30% Income on Housing	29.44%	24.53%

### Education: 27.74

This component evaluates the quality of educational institutions and the educational attainment levels of the local population, which play a crucial role in developing a skilled and adaptable workforce. Pasquotank County's performance on this dimension is weak when compared to other North Carolina counties, ranking 84th in the state.

Notable variables for Pasquotank County within this dimension include:

VARIABLE STRENGTH	FACTOR	PASQUOTANK COUNTY VALUE	NC COUNTY AVERAGE VALUE
<b>Top 10 in NC, Strongest</b>	Postsecondary Enrollment Percentage	46.54%	25.48%
<b>2nd Strongest</b>	Local LEA Financial Resources (per ADM)	\$6,928	\$8,683
<b>Bottom 10 in NC</b>	Dropout Rate	2.88%	1.65%
<b>Bottom 10 in NC</b>	Graduation Percentage	79.9%	88.03%
<b>Bottom 10 in NC, Weakest</b>	Teacher Attrition Rate	0.18	0.12

### Household Characteristics: 53.49

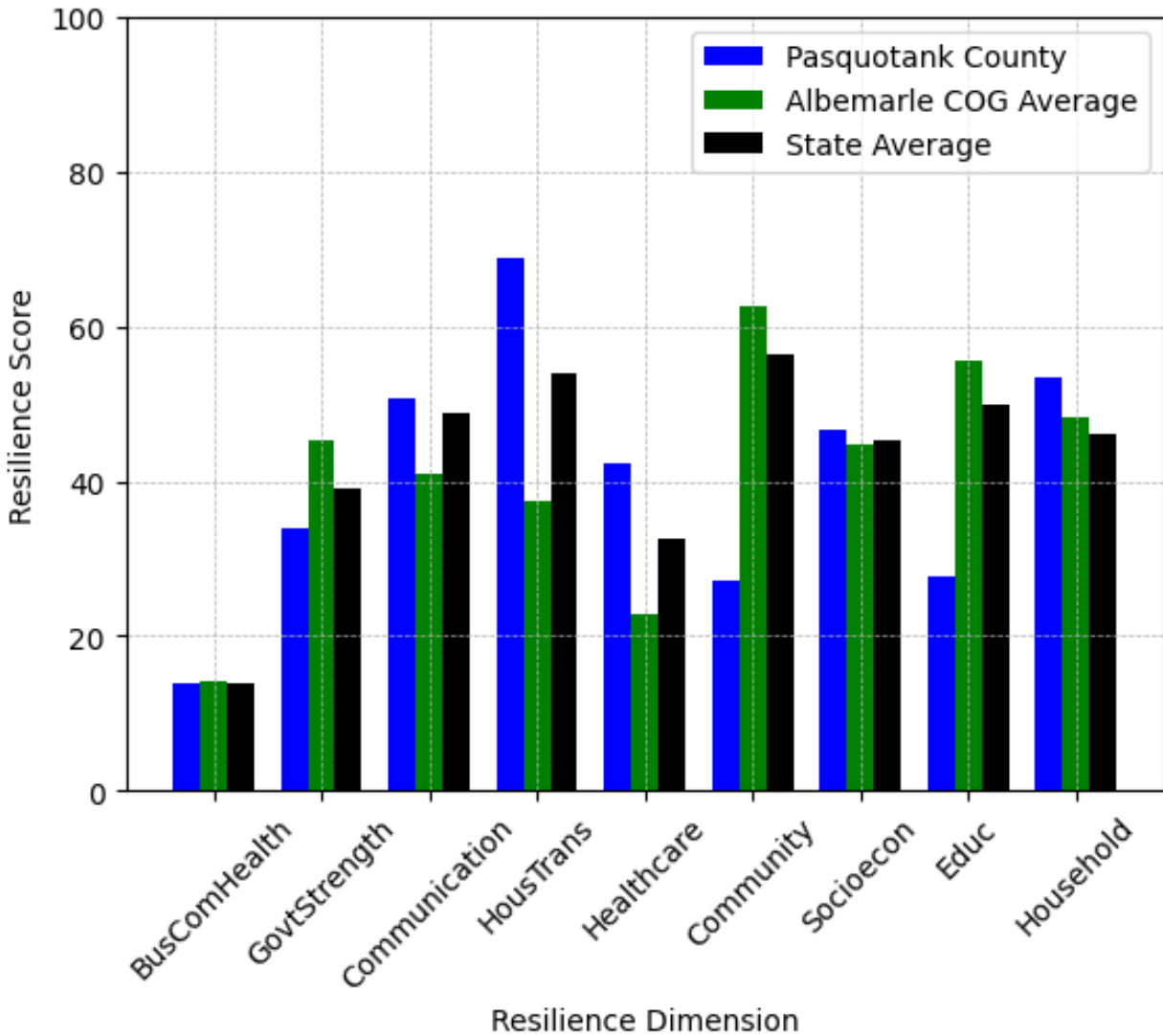
This component examines factors such as the proportion of single-parent households, age distribution, and the proportion of individuals with disabilities, as these elements can influence a community's resilience and ability to recover from economic disruptions. Pasquotank County's performance on this dimension is fairly strong when compared to other North Carolina counties, ranking 22nd in the state.

Notable variables for Pasquotank County within this dimension include:

VARIABLE STRENGTH	FACTOR	PASQUOTANK COUNTY VALUE	NC COUNTY AVERAGE VALUE
<b>Strongest</b>	Percentage of Population 65 and Older	17.65%	20.53%
<b>2nd Strongest</b>	Percentage of Population with a Disability	15.124%	16.566%
<b>Weakest</b>	Percentage of Population	21.6%	20.37%



## Pasquotank County's Resilience Dimension Scores Over Time As Compared to the Region and State Averages



*Note: Resilience Scores are normalized from 1 to 100 with the most resilient county scoring 100. The Resilience Score is determined based on a county's performance relative to NC's other 99 counties.*

## **Notable Trends in Resilience Indicators, 2017-2022**

*NOTE: The key trends in the this section are identified based on change rates of at least .15 standard deviations over at least 5 years. Variables are positively oriented such that a positive trend indicates improved performance (e.g., 'improvement' in property crime is a lower crime rate, while 'decline' in property crime indicates a higher crime rate).*

### **Trends in the Business Community Health dimension:**

Total Employment Level: **-225** (5-year change rate = **-1.42%**, from 15,872 to 15,647)

→ No change in rank

Average Weekly Wages: **177 dollars** (5-year change rate = **24.28%**, from 729 to 906)

↓ Change in rank from 42 to 55 in NC

Real GDP in Current Dollars: **80,753 dollars** (5-year change rate = **5.28%**, from 1,528,355 to 1,609,108)

↓ Change in rank from 56 to 58 in NC

Ratio of Available Child Care Slots to Number of Children under Five: **-0.28** (5-year change rate = **-29.12%**, from 0.95 to 0.67)

↓ Change in rank from 7 to 28 in NC

### **Trends in the County Government Fiscal Strength dimension:**

Adjusted Tax Base: **13,281 dollars** (5-year change rate = **17.6%**, from 75,447 to 88,728)

↓ Change in rank from 67 to 70 in NC

County Sales Tax: **5,349,037 dollars** (5-year change rate = **63.27%**, from 8,454,908 to 13,803,945)

↑ Change in rank from 58 to 53 in NC

### **Trends in the Housing & Transportation dimension:**

Ratio of Average Estimated Home Value to Median Income : **2.2** (5-year change rate = **20.29%**, from 10.86 to 13.07)

↑ Change in rank from 72 to 69 in NC



Average Available Rent Money less the Average HUD Fair Market Rent: **423.4 dollars** (5-year change rate = **90.32%**, from 468.8 to 892.2)

↑ Change in rank from 62 to 37 in NC

**Trends in the Healthcare dimension:**

Opioid Deaths per 100,000 Residents: **7.5** (5-year change rate = **33.19%**, from 22.6 to 30.1)

↑ Change in rank from 50 to 31 in NC

Nurses per 10,000 Residents: **16.6** (5-year change rate = **6.9%**, from 240.66 to 257.26)

↑ Change in rank from 36 to 28 in NC

Physicians per 10,000 Residents: **1.12** (5-year change rate = **4.17%**, from 26.85 to 27.97)

→ No change in rank

Mental Health Professionals per 10,000 Residents: **1.31** (5-year change rate = **19.32%**, from 6.78 to 8.09)

↑ Change in rank from 29 to 27 in NC

**Trends in the Community Cohesion dimension:**

Property Crimes per 10,000 Residents: **-10.7** (4-year change rate = **-35.12%**, from 30.46 to 19.76)

↑ Change in rank from 83 to 75 in NC

**Trends in the Socioeconomics dimension:**

Unemployment Rate (Q4): **-0.9 percent** (5-year change rate = **-17.31%**, from 5.2 to 4.3)

↓ Change in rank from 78 to 79 in NC

Median Household Income: **18,000 dollars** (5-year change rate = **32.37%**, from 55,600 to 73,600)

↑ Change in rank from 37 to 35 in NC

**Trends in the Education dimension:**

Graduation Percentage: **-7.4 percent** (5-year change rate = **-8.48%**, from 87.3 to 79.9)

↓ Change in rank from 46 to 94 in NC

Dropout Rate: **1.26 percent** (5-year change rate = **78.04%**, from 1.62 to 2.88)

↓ Change in rank from 26 to 92 in NC

3rd Grade Reading Proficiency: **-11.2 percent** (5-year change rate = **-22.44%**, from 49.9 to 38.7)

↑ Change in rank from 70 to 67 in NC

**Data Advisements:**

- Availability of Broadband Services is not available for 2022 and was excluded from calculating this county's dimension and resilience score.
- Adoption Rate of Broadband Services is not available for 2022 and was excluded from calculating this county's dimension and resilience score.