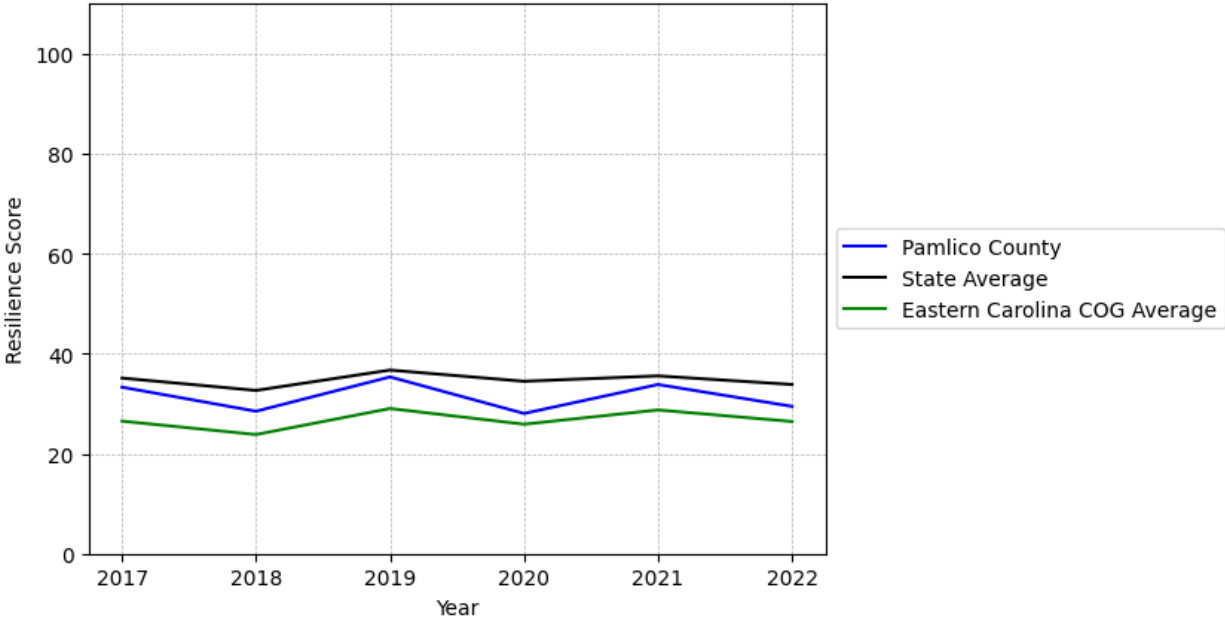


Pamlico County Summary

Resilience Score: 29.46

In 2022, Pamlico County achieved a Resilience Score of 29.46, which is average as compared to the North Carolina State average.

**Pamlico County's Resilience Score Over Time
As Compared to the Region and State Averages**



Note: Resilience Scores are normalized from 1 to 100 with the most resilient county scoring 100. The Resilience Score is determined based on a county's performance relative to NC's other 99 counties.

Pamlico County's Resilience Score is comprised of 9 distinct dimensions of resilience. Below are Pamlico County's scores for 2022 on those 9 dimensions, and their rank relative to other North Carolina counties.

Business Community Health: 12.03

This component examines the strength and diversity of the local business community, including factors such as the number of businesses, employment levels, and industry diversity. Pamlico County's performance on this dimension is average when compared to other North Carolina counties, ranking 46th in the state.

Notable variables for Pamlico County within this dimension include:

VARIABLE STRENGTH	FACTOR	PAMLICO COUNTY VALUE	NC COUNTY AVERAGE VALUE
Top 10 in NC, Strongest	Private Sector Diversity	0.503	0.28
2nd Strongest	Ratio of Available Child Care Slots to Number of Children under Five	0.76	0.59
Bottom 10 in NC	Real GDP in Current Dollars	\$287,878	\$6,092,555
Bottom 10 in NC, Weakest	Average Weekly Wages	\$707	\$951

County Government Fiscal Strength: 36.84

This component looks at the financial health of local governments, including their ability to generate revenue, manage debt, and maintain adequate reserves to weather economic downturns. Pamlico County's performance on this dimension is average when compared to other North Carolina counties, ranking 61st in the state.

Notable variables for Pamlico County within this dimension include:

VARIABLE STRENGTH	FACTOR	PAMLICO COUNTY VALUE	NC COUNTY AVERAGE VALUE
Strongest	Adjusted Tax Base	\$158,719	\$124,092
2nd Strongest	Debt Service Ratio of County Government	0.05	0.07
Weakest	County Sales Tax	\$3,610,226	\$31,151,902

Communication: 33.9

This component assesses the availability and quality of communication infrastructure, such as broadband internet access, which is crucial for businesses and residents to stay connected and resilient during disruptions. Pamlico County's performance on this dimension is fairly weak when compared to other North Carolina counties, ranking 85th in the state.

Notable variables for Pamlico County within this dimension include:

VARIABLE STRENGTH	FACTOR	PAMLICO COUNTY VALUE	NC COUNTY AVERAGE VALUE
Strongest	Percentage of Population without Smartphones	17.64%	17.22%
2nd Strongest	Broadband Availability	0.46	0.6
Weakest	Local High-Speed Mobile Data Availability	0.43	0.66

Housing & Transportation: 61.55

This component evaluates the accessibility and affordability of housing, as well as the availability of reliable transportation options, which are essential for a resilient workforce and economy. Pamlico County's performance on this dimension is average when compared to other North Carolina counties, ranking 45th in the state.

Notable variables for Pamlico County within this dimension include:

VARIABLE STRENGTH	FACTOR	PAMLICO COUNTY VALUE	NC COUNTY AVERAGE VALUE
Top 10 in NC, Strongest	Percentage of Households with More Residents than Rooms	0.31%	2.1%
2nd Strongest	Percentage of People with Commute Times Over 45 Minutes	9.65%	16.69%
Bottom 10 in NC	Ratio of Average Estimated Home Value to Median Income	38.71	13.67
Bottom 10 in NC, Weakest	Percentage of People Driving Alone to Work	90.87%	86.36%

Healthcare: 2.14

The healthcare component examines the availability and quality of healthcare facilities, services, and professionals, which are critical for maintaining a healthy and productive workforce. Pamlico County's performance on this dimension is weak when compared to other North Carolina counties, ranking 99th in the state.

Notable variables for Pamlico County within this dimension include:

VARIABLE STRENGTH	FACTOR	PAMLICO COUNTY VALUE	NC COUNTY AVERAGE VALUE
-------------------	--------	----------------------	-------------------------

Strongest	Nursing Home Beds per 1,000 Residents of Age 65+	25.72	27.53
2nd Strongest	Physicians per 10,000 Residents	7.32	16.05
Bottom 10 in NC	Nurses per 10,000 Residents	57.28	262.64
Bottom 10 in NC	Mental Health Professionals per 10,000 Residents	2.44	6.6
Bottom 10 in NC, Weakest	Opioid Deaths per 100,000 Residents	86.4	38.73

Community Cohesion: 72.07

This component looks at the strength of social networks, community engagement, and the ability of residents to work together to address challenges and support one another during times of adversity. Pamlico County's performance on this dimension is fairly strong when compared to other North Carolina counties, ranking 17th in the state.

Notable variables for Pamlico County within this dimension include:

VARIABLE STRENGTH	FACTOR	PAMLICO COUNTY VALUE	NC COUNTY AVERAGE VALUE
Top 10 in NC, Strongest	Nonprofits Organizations per 1,000 Residents	7.08	3.17
2nd Strongest	Property Crimes per 10,000 Residents	11.79	15.74
Weakest	Yearly Population Change Percentage	0.016%	0.906%

Socioeconomics: 49.43

This component considers factors such as income levels, poverty rates, and inequality, which can impact a community's ability to withstand and recover from economic shocks. Pamlico County's performance on this dimension is average when compared to other North Carolina counties, ranking 41st in the state.

Notable variables for Pamlico County within this dimension include:

VARIABLE STRENGTH	FACTOR	PAMLICO COUNTY VALUE	NC COUNTY AVERAGE VALUE
Strongest	Percentage of Population without Health Insurance	9.32%	11.23%

2nd Strongest	Percentage of Households with Income over \$200k	5.79%	5.28%
Weakest	Gini Coefficient (Income Inequality)	0.48	0.46

Education: 61.13

This component evaluates the quality of educational institutions and the educational attainment levels of the local population, which play a crucial role in developing a skilled and adaptable workforce. Pamlico County's performance on this dimension is fairly strong when compared to other North Carolina counties, ranking 16th in the state.

Notable variables for Pamlico County within this dimension include:

VARIABLE STRENGTH	FACTOR	PAMLICO COUNTY VALUE	NC COUNTY AVERAGE VALUE
Top 10 in NC, Strongest	Student to Teacher Ratio	12	14
2nd Strongest	Local LEA Financial Resources (per ADM)	\$12,332	\$8,683
Weakest	Teacher Attrition Rate	0.12	0.12

Household Characteristics: 41.85

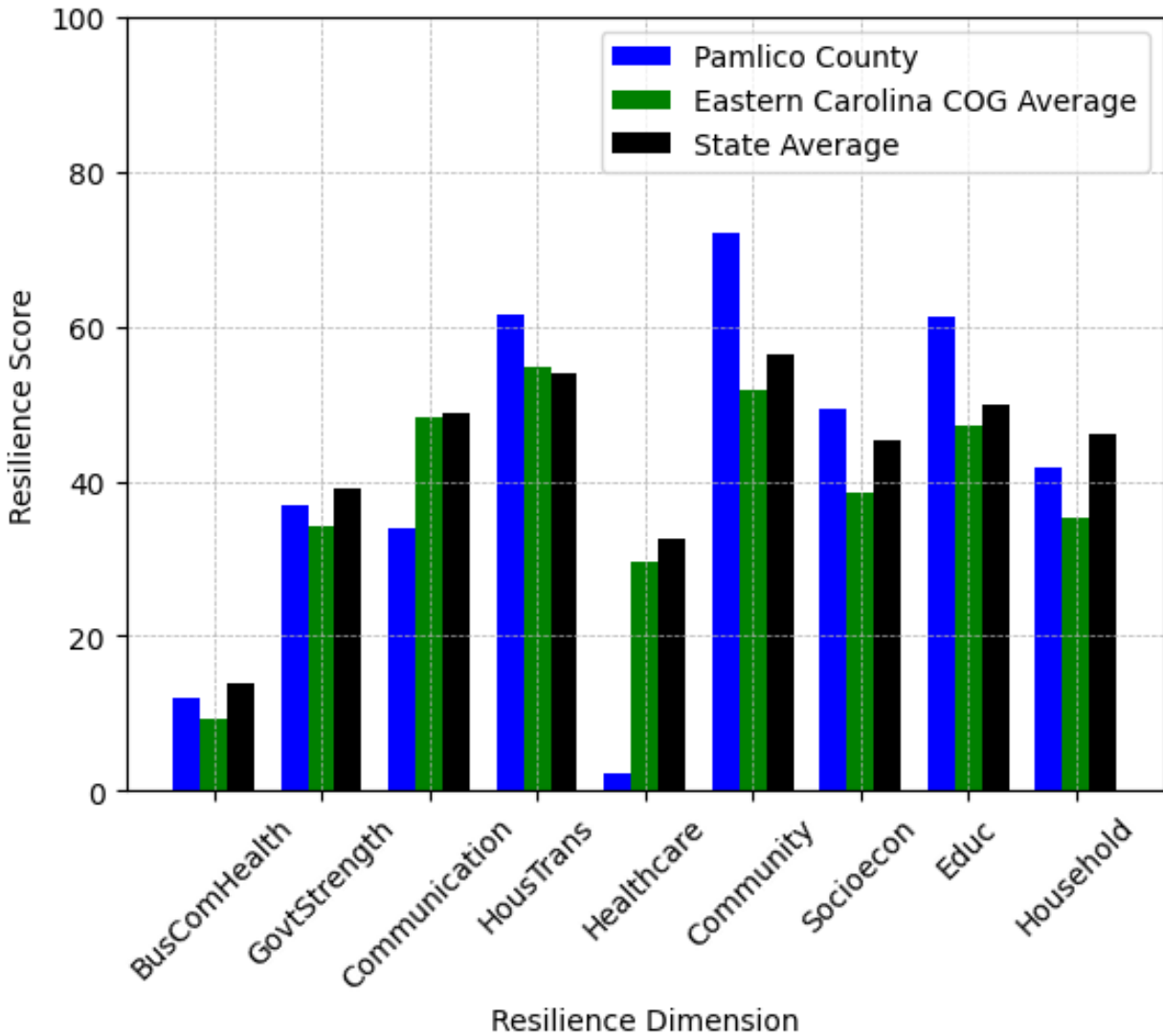
This component examines factors such as the proportion of single-parent households, age distribution, and the proportion of individuals with disabilities, as these elements can influence a community's resilience and ability to recover from economic disruptions. Pamlico County's performance on this dimension is average when compared to other North Carolina counties, ranking 62nd in the state.

Notable variables for Pamlico County within this dimension include:

VARIABLE STRENGTH	FACTOR	PAMLICO COUNTY VALUE	NC COUNTY AVERAGE VALUE
Top 10 in NC, Strongest	Percentage of Population 17 and Younger	14.47%	20.37%
2nd Strongest	Percentage of Single Parent Households	27.958%	36.132%
Bottom 10 in NC	Percentage of Population with a Disability	20.912%	16.566%
Bottom 10 in NC, Weakest	Percentage of Population 65 and Older	30.35%	20.53%



Pamlico County's Resilience Dimension Scores Over Time As Compared to the Region and State Averages



Note: Resilience Scores are normalized from 1 to 100 with the most resilient county scoring 100. The Resilience Score is determined based on a county's performance relative to NC's other 99 counties.

Notable Trends in Resilience Indicators, 2017-2022

NOTE: The key trends in the this section are identified based on change rates of at least .15 standard deviations over at least 5 years. Variables are positively oriented such that a positive trend indicates improved performance (e.g., 'improvement' in property crime is a lower crime rate, while 'decline' in property crime indicates a higher crime rate).

Trends in the Business Community Health dimension:

Total Employment Level: **457** (5-year change rate = **14.12%**, from 3,239 to 3,697)

↑ Change in rank from 90 to 89 in NC

Average Weekly Wages: **91 dollars** (5-year change rate = **14.77%**, from 616 to 707)

↓ Change in rank from 97 to 100 in NC

Real GDP in Current Dollars: **-681 dollars** (5-year change rate = **-0.24%**, from 288,559 to 287,878)

→ No change in rank

Trends in the County Government Fiscal Strength dimension:

Adjusted Tax Base: **19,115 dollars** (5-year change rate = **13.69%**, from 139,604 to 158,719)

↓ Change in rank from 17 to 18 in NC

County Sales Tax: **1,228,792 dollars** (5-year change rate = **51.6%**, from 2,381,434 to 3,610,226)

↓ Change in rank from 88 to 89 in NC

Trends in the Housing & Transportation dimension:

Ratio of Average Estimated Home Value to Median Income : **10.8** (5-year change rate = **38.68%**, from 27.91 to 38.71)

↓ Change in rank from 92 to 95 in NC

Average Available Rent Money less the Average HUD Fair Market Rent: **40.6 dollars** (5-year change rate = **5.55%**, from 731.5 to 772.1)

↓ Change in rank from 8 to 51 in NC

Trends in the Healthcare dimension:

Opioid Deaths per 100,000 Residents: **39.1** (5-year change rate = **82.66%**, from 47.3 to 86.4)

↓ Change in rank from 96 to 99 in NC

Nurses per 10,000 Residents: **4.52** (5-year change rate = **8.57%**, from 52.76 to 57.28)

↑ Change in rank from 93 to 91 in NC

Mental Health Professionals per 10,000 Residents: **-2.36** (5-year change rate = **-49.17%**, from 4.8 to 2.44)

↓ Change in rank from 59 to 91 in NC

Trends in the Community Cohesion dimension:

Violent Crimes per 10,000 Residents: **0.94** (4-year change rate = **49.06%**, from 1.92 to 2.86)

↓ Change in rank from 44 to 57 in NC

Property Crimes per 10,000 Residents: **-3.43** (4-year change rate = **-22.54%**, from 15.22 to 11.79)

↑ Change in rank from 37 to 30 in NC

Nonprofits Organizations per 1,000 Residents: **1.72** (5-year change rate = **32.18%**, from 5.36 to 7.08)

↑ Change in rank from 8 to 2 in NC

Trends in the Socioeconomics dimension:

Unemployment Rate (Q4): **-1 percent** (5-year change rate = **-23.13%**, from 4.5 to 3.4)

↑ Change in rank from 61 to 36 in NC

Median Household Income: **8,600 dollars** (5-year change rate = **14.5%**, from 59,300 to 67,900)

↓ Change in rank from 22 to 52 in NC

Trends in the Education dimension:

Graduation Percentage: **-1.1 percent** (5-year change rate = **-1.19%**, from 92.7 to 91.6)

↓ Change in rank from 9 to 22 in NC

Dropout Rate: **0.82 percent** (5-year change rate = **119.72%**, from 0.68 to 1.5)

↓ Change in rank from 3 to 46 in NC

3rd Grade Reading Proficiency: **-5.3 percent** (5-year change rate = **-10.25%**, from 51.7 to 46.4)

↑ Change in rank from 59 to 37 in NC

Data Advisements:

- This county has a population under 20,000 residents according to the US Census Bureau; in low population areas, some variable estimates can be less stable and more sensitive to changes.
- Availability of Broadband Services is not available for 2022 and was excluded from calculating this county's dimension and resilience score.
- Adoption Rate of Broadband Services is not available for 2022 and was excluded from calculating this county's dimension and resilience score.