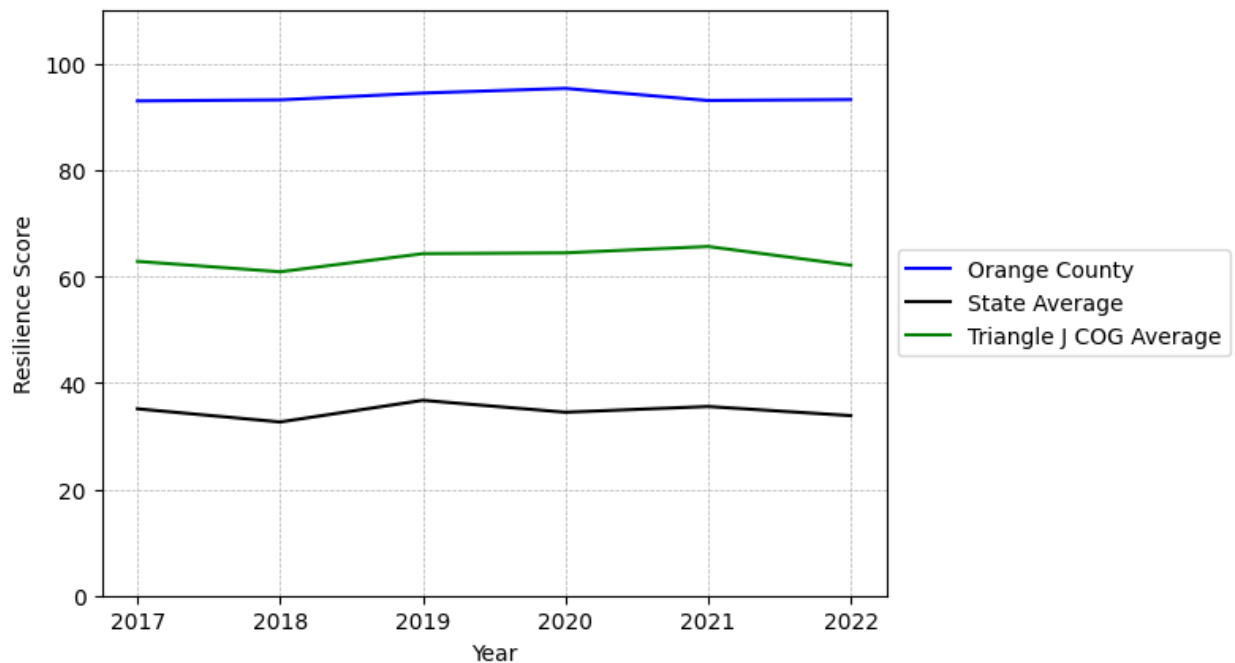


Orange County Summary

Resilience Score: 93.25

In 2022, Orange County achieved a Resilience Score of 93.25, which is strong as compared to the North Carolina State average.

**Orange County's Resilience Score Over Time
As Compared to the Region and State Averages**



Note: Resilience Scores are normalized from 1 to 100 with the most resilient county scoring 100. The Resilience Score is determined based on a county's performance relative to NC's other 99 counties.

Orange County's Resilience Score is comprised of 9 distinct dimensions of resilience. Below are Orange County's scores for 2022 on those 9 dimensions, and their rank relative to other North Carolina counties.

Business Community Health: 49.87

This component examines the strength and diversity of the local business community, including factors such as the number of businesses, employment levels, and industry diversity. Orange County's performance on this dimension is strong when compared to other North Carolina counties, ranking 4th in the state.

Notable variables for Orange County within this dimension include:

VARIABLE STRENGTH	FACTOR	ORANGE COUNTY VALUE	NC COUNTY AVERAGE VALUE
Top 10 in NC, Strongest	Average Weekly Wages	\$1,455	\$951
Top 10 in NC, 2nd Strongest	Percentage of Companies in Science, Engineering, & Technology Industries	17.06%	6.13%
Top 10 in NC	Science, Engineering, & Technology Industries Employment Percentage	5.7%	1.79%
Top 10 in NC	Ratio of Available Child Care Slots to Number of Children under Five	0.97	0.59
Top 10 in NC	Real GDP in Current Dollars	\$9,678,52	\$6,092,555
Weakest	Private Sector Diversity	0.094	0.28

County Government Fiscal Strength: 28.44

This component looks at the financial health of local governments, including their ability to generate revenue, manage debt, and maintain adequate reserves to weather economic downturns. Orange County's performance on this dimension is fairly weak when compared to other North Carolina counties, ranking 76th in the state.

Notable variables for Orange County within this dimension include:

VARIABLE STRENGTH	FACTOR	ORANGE COUNTY VALUE	NC COUNTY AVERAGE VALUE
Top 10 in NC, Strongest	Dependency Ratio of County Government	0.08	0.16
2nd Strongest	County Sales Tax	\$36,299,488	\$31,151,902
Bottom 10 in NC	Solvency Ratio of County Government	24.41	46.7
Bottom 10 in NC, Weakest	Debt Service Ratio of County Government	0.18	0.07

Communication: 75.33

This component assesses the availability and quality of communication infrastructure, such as broadband internet access, which is crucial for businesses and residents to stay connected and resilient during disruptions. Orange County's performance on this dimension is strong when compared to other North Carolina counties, ranking 14th in the state.

Notable variables for Orange County within this dimension include:

VARIABLE STRENGTH	FACTOR	ORANGE COUNTY VALUE	NC COUNTY AVERAGE VALUE
Top 10 in NC, Strongest	Percentage of Population without Smartphones	8.09%	17.22%
2nd Strongest	In-Vehicle High-Speed Mobile Data Availability	0.53	0.37
Weakest	Broadband Availability	0.69	0.6

Housing & Transportation: 100

This component evaluates the accessibility and affordability of housing, as well as the availability of reliable transportation options, which are essential for a resilient workforce and economy. Orange County's performance on this dimension is strong when compared to other North Carolina counties, ranking 1st in the state.

Notable variables for Orange County within this dimension include:

VARIABLE STRENGTH	FACTOR	ORANGE COUNTY VALUE	NC COUNTY AVERAGE VALUE
Top 10 in NC, Strongest	Percentage of People Driving Alone to Work	76.72%	86.36%
2nd Strongest	Average Available Rent Money less the Average HUD Fair Market Rent	\$1,065.3	\$799.87
Weakest	Percentage of Households with More Residents than Rooms	2.3%	2.1%

Healthcare: 100

The healthcare component examines the availability and quality of healthcare facilities, services, and professionals, which are critical for maintaining a healthy and productive workforce. Orange County's performance on this dimension is strong when compared to other North Carolina counties, ranking 1st in the state.

Notable variables for Orange County within this dimension include:

VARIABLE STRENGTH	FACTOR	ORANGE COUNTY VALUE	NC COUNTY AVERAGE VALUE
Top 10 in NC, Strongest	Physicians per 10,000 Residents	136.97	16.05
Top 10 in NC, 2nd Strongest	Mental Health Professionals per 10,000 Residents	29.74	6.6
Top 10 in NC	Nurses per 10,000 Residents	601.7	262.64
Weakest	Nursing Home Beds per 1,000 Residents of Age 65+	26.57	27.53

Community Cohesion: 51.24

This component looks at the strength of social networks, community engagement, and the ability of residents to work together to address challenges and support one another during times of adversity. Orange County's performance on this dimension is average when compared to other North Carolina counties, ranking 70th in the state.

Notable variables for Orange County within this dimension include:

VARIABLE STRENGTH	FACTOR	ORANGE COUNTY VALUE	NC COUNTY AVERAGE VALUE
Strongest	Violent Crimes per 10,000 Residents	2.41	3.07
2nd Strongest	Nonprofits Organizations per 1,000 Residents	3.16	3.17
Weakest	Yearly Population Change Percentage	0.253%	0.906%

Socioeconomics: 90.53

This component considers factors such as income levels, poverty rates, and inequality, which can impact a community's ability to withstand and recover from economic shocks. Orange County's performance on this dimension is strong when compared to other North Carolina counties, ranking 3rd in the state.

Notable variables for Orange County within this dimension include:

VARIABLE STRENGTH	FACTOR	ORANGE COUNTY VALUE	NC COUNTY AVERAGE VALUE
-------------------	--------	---------------------	-------------------------

Top 10 in NC, Strongest	Population 25+ with at least a Bachelor's Degree	61.71%	24.4%
Top 10 in NC, 2nd Strongest	Percentage of Households with Income over \$200k	18.38%	5.28%
Top 10 in NC	Percentage of Population without Health Insurance	6.34%	11.23%
Top 10 in NC	Unemployment Rate (Q4)	3%	3.9%
Top 10 in NC	Percentage of Population without a High School Diploma	4.17%	9.05%
Top 10 in NC	Median Household Income	\$95,5	\$70,088
Bottom 10 in NC, Weakest	Gini Coefficient (Income Inequality)	0.51	0.46

Education: 84.9

This component evaluates the quality of educational institutions and the educational attainment levels of the local population, which play a crucial role in developing a skilled and adaptable workforce. Orange County's performance on this dimension is strong when compared to other North Carolina counties, ranking 3rd in the state.

Notable variables for Orange County within this dimension include:

VARIABLE STRENGTH	FACTOR	ORANGE COUNTY VALUE	NC COUNTY AVERAGE VALUE
Top 10 in NC, Strongest	Postsecondary Enrollment Percentage	75.27%	25.48%
Top 10 in NC, 2nd Strongest	3rd Grade Reading Proficiency	56.72%	43.1%
Weakest	Teacher Attrition Rate	0.12	0.12

Household Characteristics: 76.02

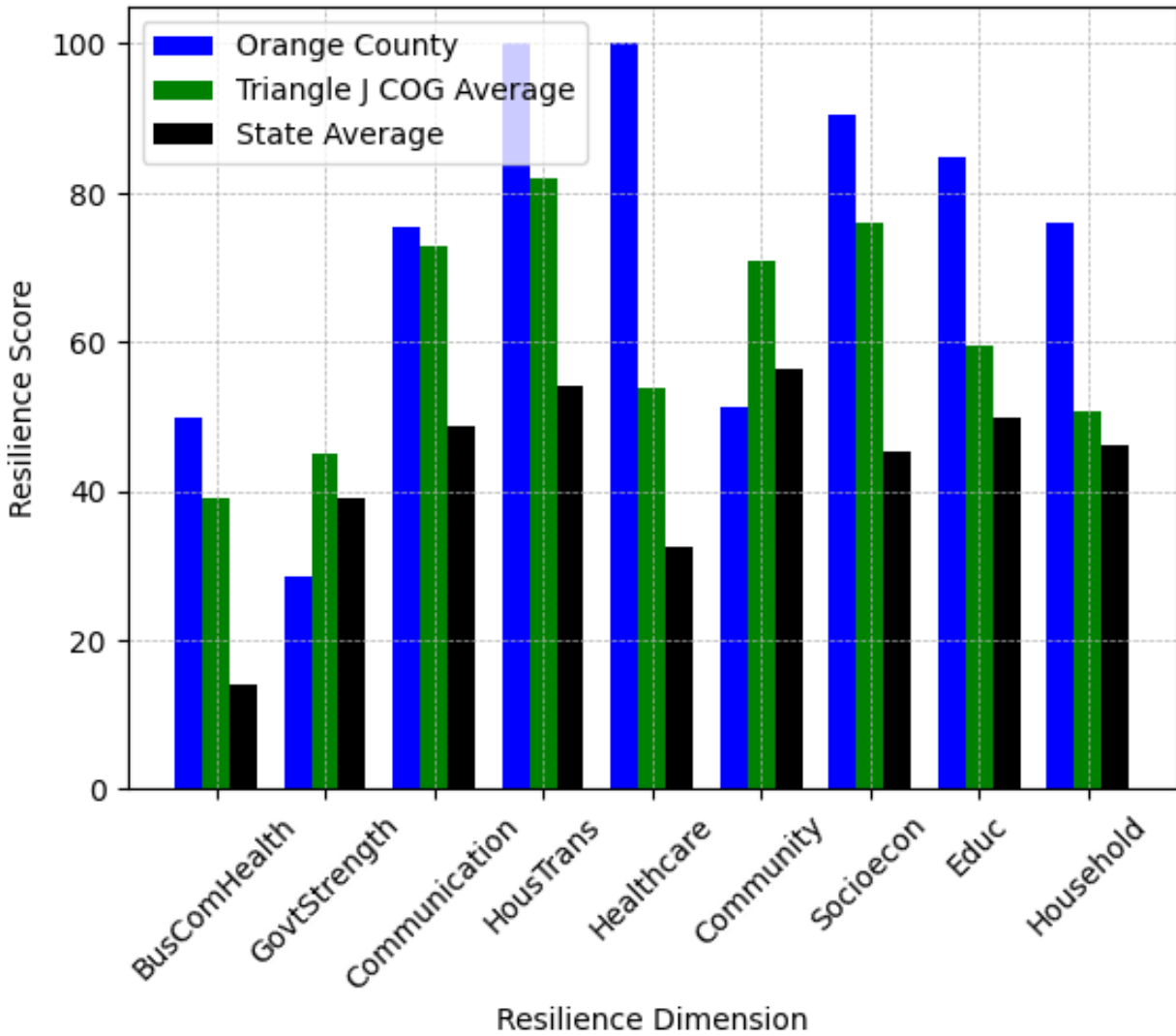
This component examines factors such as the proportion of single-parent households, age distribution, and the proportion of individuals with disabilities, as these elements can influence a community's resilience and ability to recover from economic disruptions. Orange County's performance on this dimension is strong when compared to other North Carolina counties, ranking 2nd in the state.

Notable variables for Orange County within this dimension include:

VARIABLE STRENGTH	FACTOR	ORANGE COUNTY VALUE	NC COUNTY AVERAGE VALUE
-------------------	--------	---------------------	-------------------------

Top 10 in NC, Strongest	Percentage of Population with a Disability	8.302%	16.566%
Top 10 in NC, 2nd Strongest	Percentage of Single Parent Households	21.69%	36.132%
Weakest	Percentage of Population with Limited English Proficiency	2.577%	1.454%

Orange County's Resilience Dimension Scores Over Time As Compared to the Region and State Averages



Note: Resilience Scores are normalized from 1 to 100 with the most resilient county scoring 100. The Resilience Score is determined based on a county's performance relative to NC's other 99 counties.

Notable Trends in Resilience Indicators, 2017-2022

NOTE: The key trends in the this section are identified based on change rates of at least .15 standard deviations over at least 5 years. Variables are positively oriented such that a positive trend indicates improved performance (e.g., 'improvement' in property crime is a lower crime rate, while 'decline' in property crime indicates a higher crime rate).

Trends in the Business Community Health dimension:

Total Employment Level: **5,297** (5-year change rate = **7.42%**, from 71,405 to 76,701)

→ No change in rank

Average Weekly Wages: **321 dollars** (5-year change rate = **28.31%**, from 1,134 to 1,455)

→ No change in rank

Real GDP in Current Dollars: **1,085,707 dollars** (5-year change rate = **12.64%**, from 8,592,813 to 9,678,520)

↑ Change in rank from 12 to 10 in NC

Trends in the County Government Fiscal Strength dimension:

Adjusted Tax Base: **18,971 dollars** (5-year change rate = **16.51%**, from 114,918 to 133,889)

→ No change in rank

County Sales Tax: **11,128,616 dollars** (5-year change rate = **44.21%**, from 25,170,872 to 36,299,488)

↓ Change in rank from 20 to 23 in NC

Trends in the Housing & Transportation dimension:

Ratio of Average Estimated Home Value to Median Income : **1.7** (5-year change rate = **31.3%**, from 5.43 to 7.12)

↓ Change in rank from 44 to 45 in NC

Average Available Rent Money less the Average HUD Fair Market Rent: **299.8 dollars** (5-year change rate = **39.16%**, from 765.5 to 1,065.3)

↓ Change in rank from 5 to 14 in NC

Trends in the Healthcare dimension:

Opioid Deaths per 100,000 Residents: **13.9** (5-year change rate = **154.44%**, from 9 to 22.9)

↓ Change in rank from 8 to 16 in NC

Nurses per 10,000 Residents: **93.72** (5-year change rate = **18.45%**, from 507.98 to 601.7)

→ No change in rank

Physicians per 10,000 Residents: **18.89** (5-year change rate = **16%**, from 118.08 to 136.97)

→ No change in rank

Mental Health Professionals per 10,000 Residents: **2.85** (5-year change rate = **10.6%**, from 26.89 to 29.74)

→ No change in rank

Trends in the Community Cohesion dimension:

Violent Crimes per 10,000 Residents: **0.87** (4-year change rate = **57.1%**, from 1.53 to 2.41)

↓ Change in rank from 27 to 46 in NC

Property Crimes per 10,000 Residents: **1.93** (4-year change rate = **11.19%**, from 17.28 to 19.21)

↓ Change in rank from 45 to 72 in NC

Nonprofits Organizations per 1,000 Residents: **-1.45** (5-year change rate = **-31.41%**, from 4.6 to 3.16)

↓ Change in rank from 13 to 50 in NC

Trends in the Socioeconomics dimension:

Unemployment Rate (Q4): **-0.4 percent** (5-year change rate = **-11.88%**, from 3.4 to 3)

↓ Change in rank from 2 to 4 in NC

Median Household Income: **22,200 dollars** (5-year change rate = **30.29%**, from 73,300 to 95,500)

↓ Change in rank from 4 to 8 in NC

Trends in the Education dimension:

Graduation Percentage: **-1.1 percent** (5-year change rate = **-1.21%**, from 91.25 to 90.15)

↓ Change in rank from 21 to 32 in NC

Dropout Rate: **-0.51 percent** (5-year change rate = **-41.78%**, from 1.22 to 0.71)

↓ Change in rank from 12 to 16 in NC

Student to Teacher Ratio: **-1** (4-year change rate = **-6.52%**, from 13 to 13)

↑ Change in rank from 19 to 17 in NC

3rd Grade Reading Proficiency: **-5.6 percent** (5-year change rate = **-8.99%**, from 62.32 to 56.72)

↑ Change in rank from 17 to 8 in NC

Data Advisements:

- Availability of Broadband Services is not available for 2022 and was excluded from calculating this county's dimension and resilience score.
- Adoption Rate of Broadband Services is not available for 2022 and was excluded from calculating this county's dimension and resilience score.