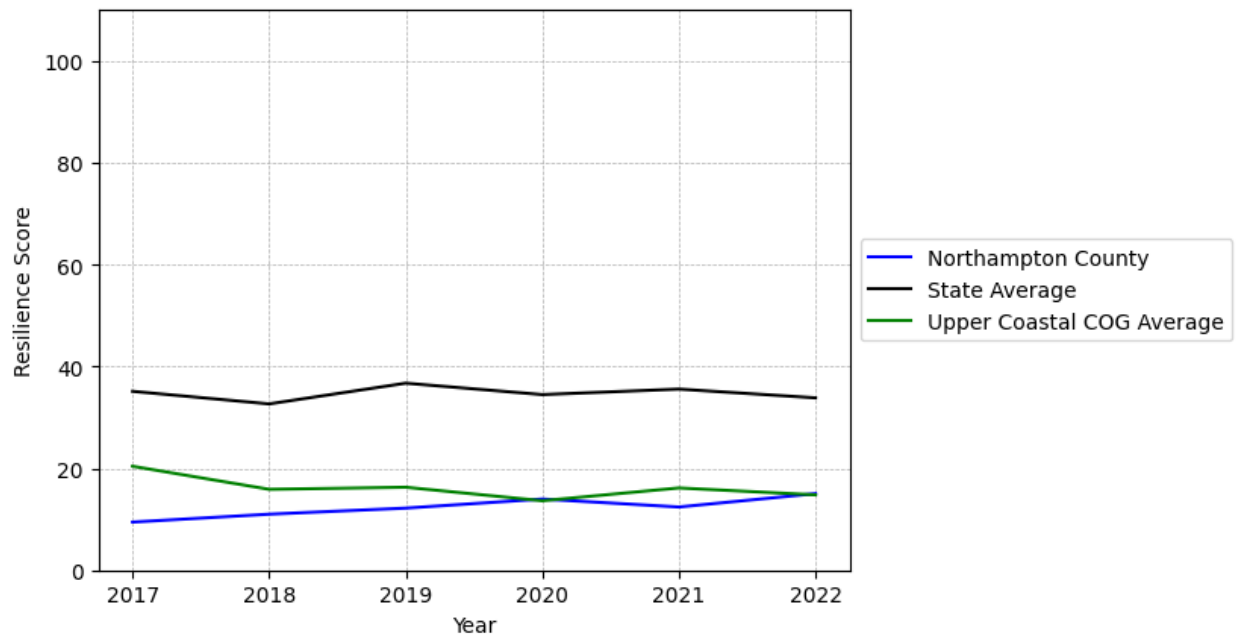


Northampton County Summary

Resilience Score: 15.03

In 2022, Northampton County achieved a Resilience Score of 15.03, which is fairly weak as compared to the North Carolina State average.

**Northampton County's Resilience Score Over Time
As Compared to the Region and State Averages**



Note: Resilience Scores are normalized from 1 to 100 with the most resilient county scoring 100. The Resilience Score is determined based on a county's performance relative to NC's other 99 counties.

Northampton County's Resilience Score is comprised of 9 distinct dimensions of resilience. Below are Northampton County's scores for 2022 on those 9 dimensions, and their rank relative to other North Carolina counties.

Business Community Health: 20.05

This component examines the strength and diversity of the local business community, including factors such as the number of businesses, employment levels, and industry diversity. Northampton County's performance on this dimension is average when compared to other North Carolina counties, ranking 17th in the state.

Notable variables for Northampton County within this dimension include:

VARIABLE STRENGTH	FACTOR	NORTHAMPTON COUNTY VALUE	NC COUNTY AVERAGE VALUE
Top 10 in NC, Strongest	Ratio of Available Child Care Slots to Number of Children under Five	0.9	0.59
2nd Strongest	Private Sector Diversity Science, Engineering, & Technology Industries	0.438	0.28
Weakest	Employment Percentage	N/A	1.79%

County Government Fiscal Strength: 46.87

This component looks at the financial health of local governments, including their ability to generate revenue, manage debt, and maintain adequate reserves to weather economic downturns. Northampton County's performance on this dimension is average when compared to other North Carolina counties, ranking 41st in the state.

Notable variables for Northampton County within this dimension include:

VARIABLE STRENGTH	FACTOR	NORTHAMPTON COUNTY VALUE	NC COUNTY AVERAGE VALUE
Strongest	Quick Ratio of County Government	24.1	16.4
2nd Strongest	Solvency Ratio of County Government	65.14	46.7
Bottom 10 in NC, Weakest	County Sales Tax	\$3,280,906	\$31,151,902

Communication: 26.48

This component assesses the availability and quality of communication infrastructure, such as broadband internet access, which is crucial for businesses and residents to stay connected and resilient during disruptions. Northampton County's performance on this dimension is weak when compared to other North Carolina counties, ranking 92nd in the state.

Notable variables for Northampton County within this dimension include:

VARIABLE STRENGTH	FACTOR	NORTHAMPTON COUNTY VALUE	NC COUNTY AVERAGE VALUE
Strongest	In-Vehicle High-Speed Mobile Data Availability	0.26	0.37
2nd Strongest	Broadband Availability	0.48	0.6
Bottom 10 in NC, Weakest	Percentage of Population without Smartphones	28.1%	17.22%

Housing & Transportation: 33.97

This component evaluates the accessibility and affordability of housing, as well as the availability of reliable transportation options, which are essential for a resilient workforce and economy. Northampton County's performance on this dimension is weak when compared to other North Carolina counties, ranking 93rd in the state.

Notable variables for Northampton County within this dimension include:

VARIABLE STRENGTH	FACTOR	NORTHAMPTON COUNTY VALUE	NC COUNTY AVERAGE VALUE
Strongest	Percentage of Households with More Residents than Rooms	1.7%	2.1%
2nd Strongest	Percentage of People with Commute Times Over 45 Minutes	14.43%	16.69%
Bottom 10 in NC	Percentage of Homes Built Before 1980	52.99%	40.9%
Bottom 10 in NC, Weakest	Average Available Rent Money less the Average HUD Fair Market Rent	\$474.1	\$799.87

Healthcare: 35.79

The healthcare component examines the availability and quality of healthcare facilities, services, and professionals, which are critical for maintaining a healthy and productive workforce. Northampton County's performance on this dimension is fairly strong when compared to other North Carolina counties, ranking 20th in the state.

Notable variables for Northampton County within this dimension include:

VARIABLE STRENGTH	FACTOR	NORTHAMPTON COUNTY VALUE	NC COUNTY AVERAGE VALUE
-------------------	--------	--------------------------	-------------------------

Top 10 in NC, Strongest	Opioid Deaths per 100,000 Residents	5.1	38.73
Top 10 in NC, 2nd Strongest	Nursing Home Beds per 1,000 Residents of Age 65+	43.2	27.53
Bottom 10 in NC, Weakest	Physicians per 10,000 Residents	2.93	16.05

Community Cohesion: 61.33

This component looks at the strength of social networks, community engagement, and the ability of residents to work together to address challenges and support one another during times of adversity. Northampton County's performance on this dimension is average when compared to other North Carolina counties, ranking 41st in the state.

Notable variables for Northampton County within this dimension include:

VARIABLE STRENGTH	FACTOR	NORTHAMPTON COUNTY VALUE	NC COUNTY AVERAGE VALUE
Top 10 in NC, Strongest	Property Crimes per 10,000 Residents	0.18	15.74
Top 10 in NC, 2nd Strongest	Violent Crimes per 10,000 Residents	0.06	3.07
Bottom 10 in NC, Weakest	Yearly Population Change Percentage	-2.011%	0.906%

Socioeconomics: 17.45

This component considers factors such as income levels, poverty rates, and inequality, which can impact a community's ability to withstand and recover from economic shocks. Northampton County's performance on this dimension is weak when compared to other North Carolina counties, ranking 89th in the state.

Notable variables for Northampton County within this dimension include:

VARIABLE STRENGTH	FACTOR	NORTHAMPTON COUNTY VALUE	NC COUNTY AVERAGE VALUE
Strongest	Percentage of Population without Health Insurance	11.18%	11.23%
2nd Strongest	Population 25+ with at least a Bachelor's Degree	17.77%	24.4%
Bottom 10 in NC, Weakest	Median Household Income	\$49,9	\$70,088

Education: 1

This component evaluates the quality of educational institutions and the educational attainment levels of the local population, which play a crucial role in developing a skilled and adaptable workforce. Northampton County's performance on this dimension is weak when compared to other North Carolina counties, ranking 100th in the state.

Notable variables for Northampton County within this dimension include:

VARIABLE STRENGTH	FACTOR	NORTHAMPTON COUNTY VALUE	NC COUNTY AVERAGE VALUE
Strongest	Local LEA Financial Resources (per ADM)	\$10,798	\$8,683
2nd Strongest	Student to Teacher Ratio	13	14
Bottom 10 in NC	3rd Grade Reading Proficiency	16.8%	43.1%
Bottom 10 in NC	Teacher Attrition Rate	0.24	0.12
Bottom 10 in NC, Weakest	Graduation Percentage	72.1%	88.03%

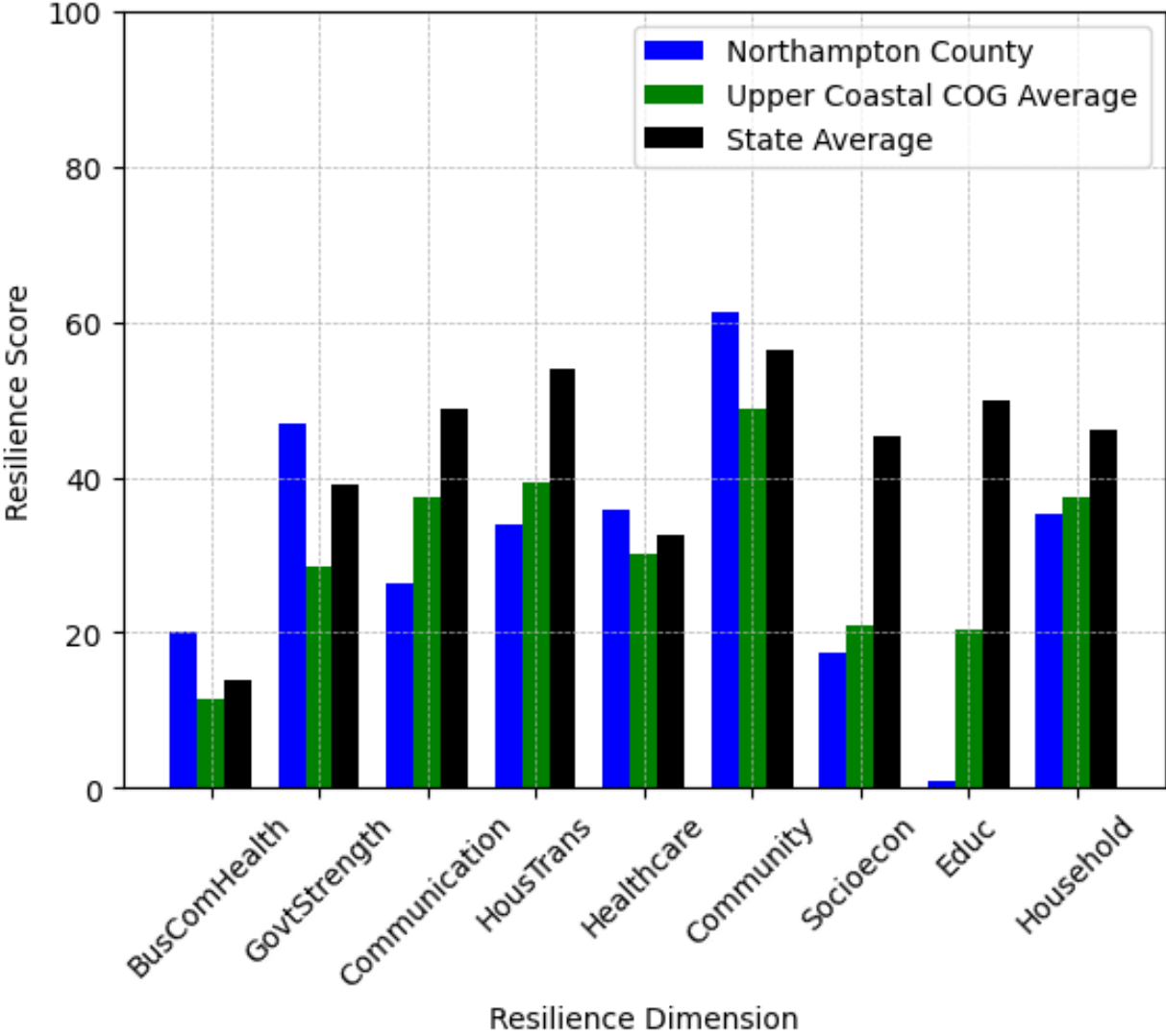
Household Characteristics: 35.41

This component examines factors such as the proportion of single-parent households, age distribution, and the proportion of individuals with disabilities, as these elements can influence a community's resilience and ability to recover from economic disruptions. Northampton County's performance on this dimension is fairly weak when compared to other North Carolina counties, ranking 78th in the state.

Notable variables for Northampton County within this dimension include:

VARIABLE STRENGTH	FACTOR	NORTHAMPTON COUNTY VALUE	NC COUNTY AVERAGE VALUE
Top 10 in NC, Strongest	Percentage of Population with Limited English Proficiency	0.302%	1.454%
2nd Strongest	Percentage of Population 17 and Younger	17.61%	20.37%
Bottom 10 in NC, Weakest	Percentage of Population 65 and Older	27.59%	20.53%

Northampton County's Resilience Dimension Scores Over Time As Compared to the Region and State Averages



Note: Resilience Scores are normalized from 1 to 100 with the most resilient county scoring 100. The Resilience Score is determined based on a county's performance relative to NC's other 99 counties.

Notable Trends in Resilience Indicators, 2017-2022

NOTE: The key trends in the this section are identified based on change rates of at least .15 standard deviations over at least 5 years. Variables are positively oriented such that a positive trend indicates improved performance (e.g., 'improvement' in property crime is a lower crime rate, while 'decline' in property crime indicates a higher crime rate).

Trends in the Business Community Health dimension:

Total Employment Level: **-291** (5-year change rate = **-5.43%**, from 5,368 to 5,077)

↓ Change in rank from 81 to 83 in NC

Average Weekly Wages: **253 dollars** (5-year change rate = **36.51%**, from 693 to 946)

↑ Change in rank from 67 to 40 in NC

Real GDP in Current Dollars: **-53,770 dollars** (5-year change rate = **-9.61%**, from 559,560 to 505,790)

↓ Change in rank from 82 to 83 in NC

Trends in the County Government Fiscal Strength dimension:

Adjusted Tax Base: **31,164 dollars** (5-year change rate = **32.44%**, from 96,079 to 127,243)

↑ Change in rank from 46 to 38 in NC

County Sales Tax: **956,795 dollars** (5-year change rate = **41.17%**, from 2,324,110 to 3,280,906)

↓ Change in rank from 89 to 91 in NC

Trends in the Housing & Transportation dimension:

Ratio of Average Estimated Home Value to Median Income : **3.58** (5-year change rate = **38.51%**, from 9.29 to 12.86)

↓ Change in rank from 65 to 68 in NC

Average Available Rent Money less the Average HUD Fair Market Rent: **210.9 dollars** (5-year change rate = **80.13%**, from 263.2 to 474.1)

↑ Change in rank from 97 to 93 in NC

Trends in the Healthcare dimension:

Opioid Deaths per 100,000 Residents: **-15** (5-year change rate = **-74.63%**, from 20.1 to 5.1)

↑ Change in rank from 40 to 1 in NC

Nurses per 10,000 Residents: **-8.54** (5-year change rate = **-12.29%**, from 69.46 to 60.92)

↓ Change in rank from 89 to 90 in NC

Physicians per 10,000 Residents: **0.82** (5-year change rate = **38.86%**, from 2.11 to 2.93)

↓ Change in rank from 94 to 96 in NC

Mental Health Professionals per 10,000 Residents: **-0.16** (5-year change rate = **-4.35%**, from 3.68 to 3.52)

↓ Change in rank from 76 to 82 in NC

Trends in the Community Cohesion dimension:

Property Crimes per 10,000 Residents: **0.18** (4-year change rate = **N/A**, from 0 to 0.18)

→ No change in rank

Nonprofits Organizations per 1,000 Residents: **0.89** (5-year change rate = **35.69%**, from 2.49 to 3.38)

↑ Change in rank from 63 to 43 in NC

Trends in the Socioeconomics dimension:

Unemployment Rate (Q4): **-1.2 percent** (5-year change rate = **-20.11%**, from 6 to 4.8)

↑ Change in rank from 90 to 85 in NC

Median Household Income: **10,300 dollars** (5-year change rate = **26.01%**, from 39,600 to 49,900)

↑ Change in rank from 98 to 97 in NC

Trends in the Education dimension:

Graduation Percentage: **-3.5 percent** (5-year change rate = **-4.63%**, from 75.6 to 72.1)

↓ Change in rank from 98 to 100 in NC

Dropout Rate: **0.66 percent** (5-year change rate = **35.16%**, from 1.87 to 2.52)

↓ Change in rank from 36 to 86 in NC

3rd Grade Reading Proficiency: **-17.4 percent** (5-year change rate = **-50.88%**, from 34.2 to 16.8)

↓ Change in rank from 98 to 99 in NC

Data Advisements:

- This county has a population under 20,000 residents according to the US Census Bureau; in low population areas, some variable estimates can be less stable and more sensitive to changes.
- Science, Engineering, & Technology Industries Employment Percentage is not available for 2022 and was excluded from calculating this county's dimension and resilience score.
- Availability of Broadband Services is not available for 2022 and was excluded from calculating this county's dimension and resilience score.
- Adoption Rate of Broadband Services is not available for 2022 and was excluded from calculating this county's dimension and resilience score.