

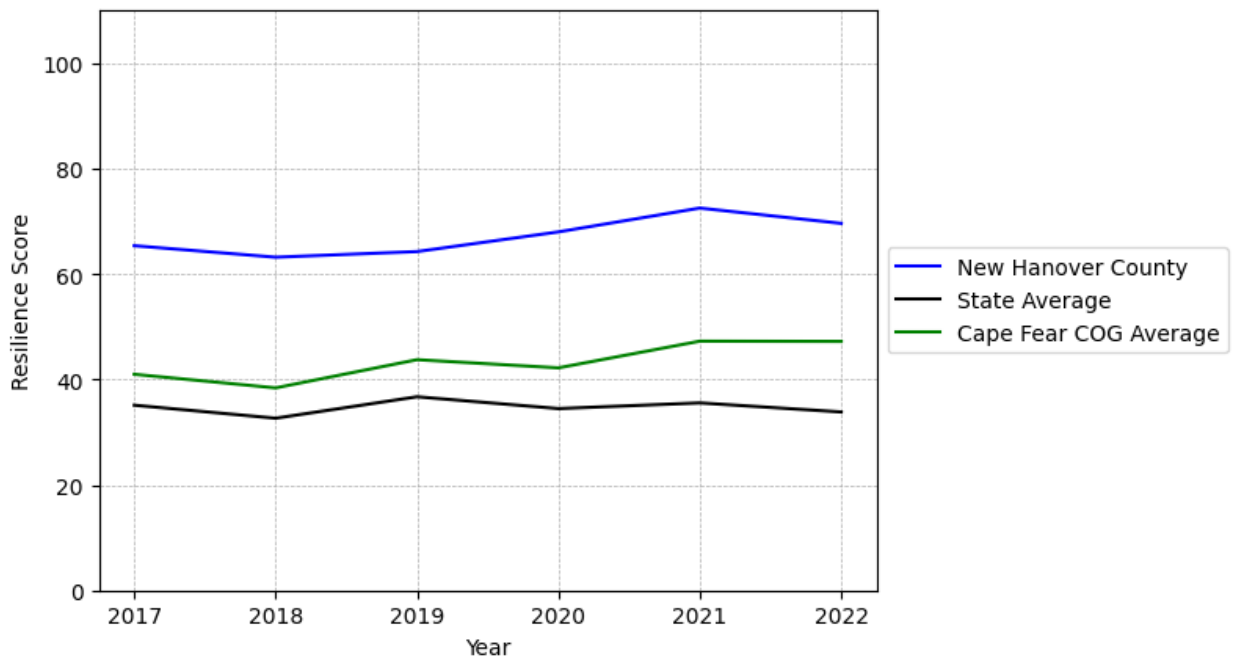
# New Hanover County Summary

---

**Resilience Score: 69.6**

In 2022, New Hanover County achieved a Resilience Score of 69.6, which is strong as compared to the North Carolina State average.

**New Hanover County's Resilience Score Over Time  
As Compared to the Region and State Averages**



*Note: Resilience Scores are normalized from 1 to 100 with the most resilient county scoring 100. The Resilience Score is determined based on a county's performance relative to NC's other 99 counties.*

New Hanover County's Resilience Score is comprised of 9 distinct dimensions of resilience. Below are New Hanover County's scores for 2022 on those 9 dimensions, and their rank relative to other North Carolina counties.

### **Business Community Health: 30.42**

This component examines the strength and diversity of the local business community, including factors such as the number of businesses, employment levels, and industry diversity. New Hanover County's performance on this dimension is strong when compared to other North Carolina counties, ranking 7th in the state.

Notable variables for New Hanover County within this dimension include:

<b>VARIABLE STRENGTH</b>	<b>FACTOR</b>	<b>NEW HANOVER COUNTY VALUE</b>	<b>NC COUNTY AVERAGE VALUE</b>
<b>Top 10 in NC, Strongest</b>	Science, Engineering, & Technology Industries Employment Percentage	6.33%	1.79%
<b>Top 10 in NC, 2nd Strongest</b>	Total Employment Level	126,861	45,758
<b>Top 10 in NC</b>	Average Weekly Wages	\$1,146	\$951
<b>Top 10 in NC</b>	Percentage of Companies in Science, Engineering, & Technology Industries	11.05%	6.13%
<b>Top 10 in NC</b>	Real GDP in Current Dollars	\$15,236,927	\$6,092,555
<b>Bottom 10 in NC, Weakest</b>	Private Sector Diversity	0.057	0.28

---

### **County Government Fiscal Strength: 78.44**

This component looks at the financial health of local governments, including their ability to generate revenue, manage debt, and maintain adequate reserves to weather economic downturns. New Hanover County's performance on this dimension is strong when compared to other North Carolina counties, ranking 8th in the state.

Notable variables for New Hanover County within this dimension include:

<b>VARIABLE STRENGTH</b>	<b>FACTOR</b>	<b>NEW HANOVER COUNTY VALUE</b>	<b>NC COUNTY AVERAGE VALUE</b>
<b>Top 10 in NC, Strongest</b>	Solvency Ratio of County Government	132.14	46.7
<b>Top 10 in NC, 2nd Strongest</b>	County Sales Tax	\$104,195,704	\$31,151,902
<b>Weakest</b>	Quick Ratio of County Government	7.58	16.4

---

### Communication: 67.65

This component assesses the availability and quality of communication infrastructure, such as broadband internet access, which is crucial for businesses and residents to stay connected and resilient during disruptions. New Hanover County's performance on this dimension is fairly strong when compared to other North Carolina counties, ranking 19th in the state.

Notable variables for New Hanover County within this dimension include:

VARIABLE STRENGTH	FACTOR	NEW HANOVER COUNTY VALUE	NC COUNTY AVERAGE VALUE
Top 10 in NC, Strongest	Percentage of Population without Smartphones	8.75%	17.22%
2nd Strongest	Broadband Availability	0.74	0.6
Weakest	Local High-Speed Mobile Data Availability	0.63	0.66

---

### Housing & Transportation: 79.64

This component evaluates the accessibility and affordability of housing, as well as the availability of reliable transportation options, which are essential for a resilient workforce and economy. New Hanover County's performance on this dimension is strong when compared to other North Carolina counties, ranking 17th in the state.

Notable variables for New Hanover County within this dimension include:

VARIABLE STRENGTH	FACTOR	NEW HANOVER COUNTY VALUE	NC COUNTY AVERAGE VALUE
Top 10 in NC, Strongest	Percentage of People with Commute Times Over 45 Minutes	6.95%	16.69%
Top 10 in NC, 2nd Strongest	Percentage of Households with More Residents than Rooms	0.88%	2.1%
Weakest	Percentage of People Driving Alone to Work	88.53%	86.36%

---

### Healthcare: 53.66

The healthcare component examines the availability and quality of healthcare facilities, services, and professionals, which are critical for maintaining a healthy and productive workforce. New Hanover County's performance on this dimension is strong when compared to other North Carolina counties, ranking 7th in the state.

Notable variables for New Hanover County within this dimension include:

VARIABLE STRENGTH	FACTOR	NEW HANOVER COUNTY VALUE	NC COUNTY AVERAGE VALUE
Top 10 in NC, Strongest	Mental Health Professionals per 10,000 Residents	17.05	6.6
Top 10 in NC, 2nd Strongest	Nurses per 10,000 Residents	835.44	262.64
Top 10 in NC	Physicians per 10,000 Residents	33.92	16.05
Weakest	Nursing Home Beds per 1,000 Residents of Age 65+	23.76	27.53

### Community Cohesion: 53.32

This component looks at the strength of social networks, community engagement, and the ability of residents to work together to address challenges and support one another during times of adversity. New Hanover County's performance on this dimension is average when compared to other North Carolina counties, ranking 61st in the state.

Notable variables for New Hanover County within this dimension include:

VARIABLE STRENGTH	FACTOR	NEW HANOVER COUNTY VALUE	NC COUNTY AVERAGE VALUE
Strongest	Yearly Population Change Percentage	2.204%	0.906%
2nd Strongest	Nonprofits Organizations per 1,000 Residents	3.67	3.17
Weakest	Percentage of Inactive Voters	14%	11.3%

### Socioeconomics: 64.63

This component considers factors such as income levels, poverty rates, and inequality, which can impact a community's ability to withstand and recover from economic shocks. New Hanover County's performance on this dimension is fairly strong when compared to other North Carolina counties, ranking 20th in the state.

Notable variables for New Hanover County within this dimension include:

VARIABLE STRENGTH	FACTOR	NEW HANOVER COUNTY VALUE	NC COUNTY AVERAGE VALUE
-------------------	--------	--------------------------	-------------------------

<b>Top 10 in NC, Strongest</b>	Percentage of Population without a High School Diploma	4.5%	9.05%
<b>Top 10 in NC, 2nd Strongest</b>	Population 25+ with at least a Bachelor's Degree	43.4%	24.4%
<b>Bottom 10 in NC, Weakest</b>	Percentage of Households Spending more than 30% Income on Housing	30.53%	24.53%

### Education: 74.29

This component evaluates the quality of educational institutions and the educational attainment levels of the local population, which play a crucial role in developing a skilled and adaptable workforce. New Hanover County's performance on this dimension is strong when compared to other North Carolina counties, ranking 6th in the state.

Notable variables for New Hanover County within this dimension include:

VARIABLE STRENGTH	FACTOR	NEW HANOVER COUNTY VALUE	NC COUNTY AVERAGE VALUE
<b>Top 10 in NC, Strongest</b>	Postsecondary Enrollment Percentage	53.45%	25.48%
<b>Top 10 in NC, 2nd Strongest</b>	Local LEA Financial Resources (per ADM)	\$18,245	\$8,683
<b>Weakest</b>	Student to Teacher Ratio	14	14

### Household Characteristics: 70.95

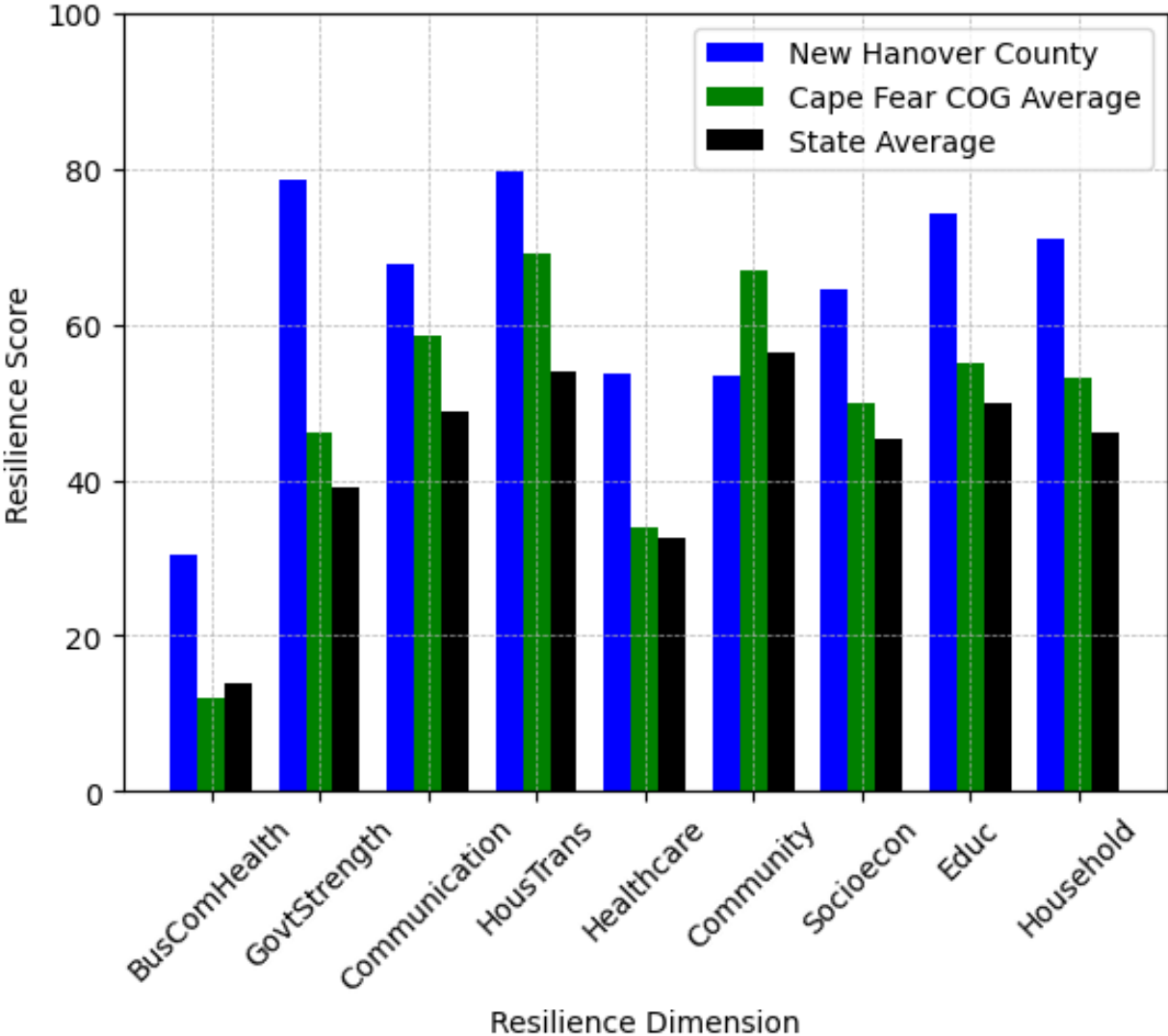
This component examines factors such as the proportion of single-parent households, age distribution, and the proportion of individuals with disabilities, as these elements can influence a community's resilience and ability to recover from economic disruptions. New Hanover County's performance on this dimension is strong when compared to other North Carolina counties, ranking 3rd in the state.

Notable variables for New Hanover County within this dimension include:

VARIABLE STRENGTH	FACTOR	NEW HANOVER COUNTY VALUE	NC COUNTY AVERAGE VALUE
<b>Strongest</b>	Percentage of Population with a Disability	12.047%	16.566%
<b>2nd Strongest</b>	Percentage of Population 17 and Younger	18.04%	20.37%
<b>Weakest</b>	Percentage of Population with Limited English	1.038%	1.454%



## New Hanover County's Resilience Dimension Scores Over Time As Compared to the Region and State Averages



*Note: Resilience Scores are normalized from 1 to 100 with the most resilient county scoring 100. The Resilience Score is determined based on a county's performance relative to NC's other 99 counties.*

## **Notable Trends in Resilience Indicators, 2017-2022**

*NOTE: The key trends in the this section are identified based on change rates of at least .15 standard deviations over at least 5 years. Variables are positively oriented such that a positive trend indicates improved performance (e.g., 'improvement' in property crime is a lower crime rate, while 'decline' in property crime indicates a higher crime rate).*

### **Trends in the Business Community Health dimension:**

Total Employment Level: **14,750** (5-year change rate = **13.16%**, from 112,110 to 126,861)

↑ Change in rank from 8 to 7 in NC

Average Weekly Wages: **271 dollars** (5-year change rate = **30.97%**, from 875 to 1,146)

↑ Change in rank from 9 to 7 in NC

Real GDP in Current Dollars: **2,647,590 dollars** (5-year change rate = **21.03%**, from 12,589,337 to 15,236,927)

→ No change in rank

### **Trends in the County Government Fiscal Strength dimension:**

Adjusted Tax Base: **34,885 dollars** (5-year change rate = **24.94%**, from 139,871 to 174,756)

↑ Change in rank from 16 to 12 in NC

County Sales Tax: **34,169,072 dollars** (5-year change rate = **48.79%**, from 70,026,632 to 104,195,704)

→ No change in rank

### **Trends in the Housing & Transportation dimension:**

Ratio of Average Estimated Home Value to Median Income : **0.74** (5-year change rate = **30.07%**, from 2.46 to 3.2)

↑ Change in rank from 18 to 17 in NC

Average Available Rent Money less the Average HUD Fair Market Rent: **306 dollars** (5-year change rate = **46.48%**, from 658.4 to 964.4)



↓ Change in rank from 22 to 29 in NC

**Trends in the Healthcare dimension:**

Opioid Deaths per 100,000 Residents: **-2.9** (5-year change rate = **-7.57%**, from 38.3 to 35.4)

↑ Change in rank from 87 to 44 in NC

Nurses per 10,000 Residents: **73.03** (5-year change rate = **9.58%**, from 762.41 to 835.44)

↑ Change in rank from 8 to 7 in NC

Physicians per 10,000 Residents: **0.33** (5-year change rate = **0.98%**, from 33.59 to 33.92)

↓ Change in rank from 7 to 8 in NC

Mental Health Professionals per 10,000 Residents: **1.22** (5-year change rate = **7.71%**, from 15.83 to 17.05)

↑ Change in rank from 5 to 4 in NC

**Trends in the Community Cohesion dimension:**

Violent Crimes per 10,000 Residents: **-0.83** (4-year change rate = **-19.99%**, from 4.16 to 3.33)

↑ Change in rank from 79 to 65 in NC

Property Crimes per 10,000 Residents: **-2.29** (4-year change rate = **-9.89%**, from 23.17 to 20.87)

↓ Change in rank from 64 to 79 in NC

Nonprofits Organizations per 1,000 Residents: **-0.33** (5-year change rate = **-8.19%**, from 4 to 3.67)

↓ Change in rank from 22 to 34 in NC

**Trends in the Socioeconomics dimension:**

Unemployment Rate (Q4): **-0.7 percent** (5-year change rate = **-18.64%**, from 3.9 to 3.2)

↑ Change in rank from 26 to 17 in NC

Median Household Income: **22,400 dollars** (5-year change rate = **32.84%**, from 68,200 to 90,600)

→ No change in rank

**Trends in the Education dimension:**

Graduation Percentage: **4.3 percent** (5-year change rate = **5.05%**, from 85.2 to 89.5)

↑ Change in rank from 65 to 36 in NC

Student to Teacher Ratio: **-1** (4-year change rate = **-4.21%**, from 15 to 14)

↑ Change in rank from 49 to 44 in NC

3rd Grade Reading Proficiency: **-7.5 percent** (5-year change rate = **-12.08%**, from 62.1 to 54.6)

↑ Change in rank from 18 to 15 in NC

**Data Advisements:**

- Availability of Broadband Services is not available for 2022 and was excluded from calculating this county's dimension and resilience score.
- Adoption Rate of Broadband Services is not available for 2022 and was excluded from calculating this county's dimension and resilience score.