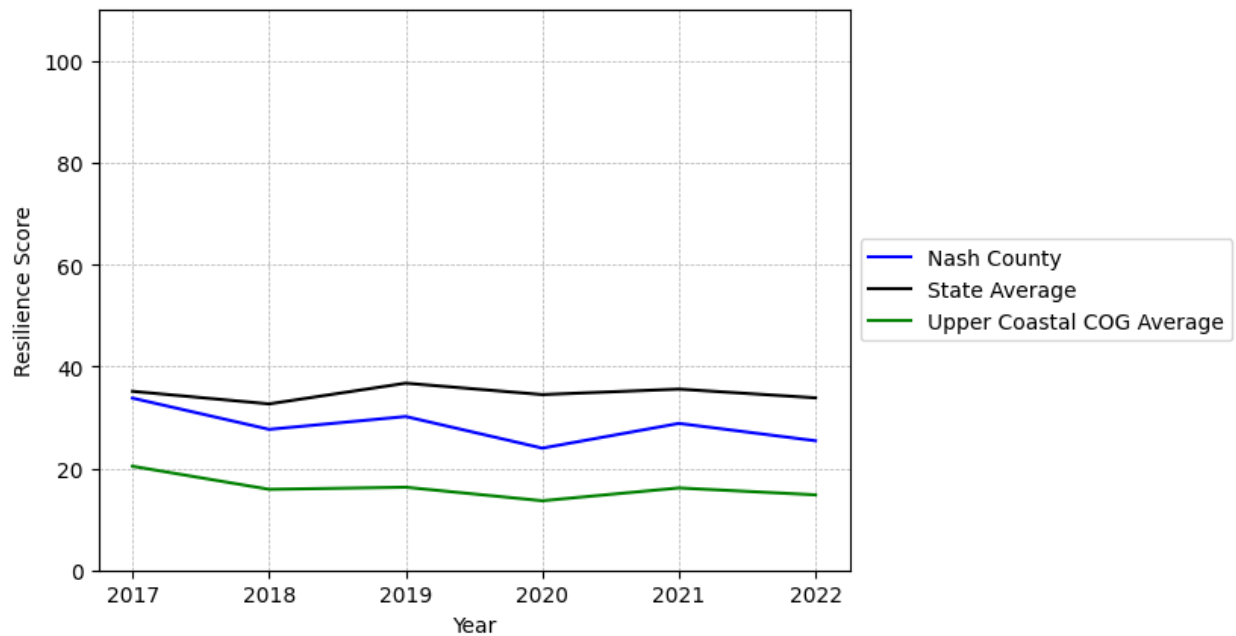


Nash County Summary

Resilience Score: 25.41

In 2022, Nash County achieved a Resilience Score of 25.41, which is average as compared to the North Carolina State average.

**Nash County's Resilience Score Over Time
As Compared to the Region and State Averages**



Note: Resilience Scores are normalized from 1 to 100 with the most resilient county scoring 100. The Resilience Score is determined based on a county's performance relative to NC's other 99 counties.

Nash County's Resilience Score is comprised of 9 distinct dimensions of resilience. Below are Nash County's scores for 2022 on those 9 dimensions, and their rank relative to other North Carolina counties.

Business Community Health: 12.88

This component examines the strength and diversity of the local business community, including factors such as the number of businesses, employment levels, and industry diversity. Nash County's performance on this dimension is average when compared to other North Carolina counties, ranking 40th in the state.

Notable variables for Nash County within this dimension include:

VARIABLE STRENGTH	FACTOR	NASH COUNTY VALUE	NC COUNTY AVERAGE VALUE
Strongest	Real GDP in Current Dollars	\$5,119,148	\$6,092,555
2nd Strongest	Average Weekly Wages	\$999	\$951
Weakest	Private Sector Diversity	0.187	0.28

County Government Fiscal Strength: 31.18

This component looks at the financial health of local governments, including their ability to generate revenue, manage debt, and maintain adequate reserves to weather economic downturns. Nash County's performance on this dimension is fairly weak when compared to other North Carolina counties, ranking 71st in the state.

Notable variables for Nash County within this dimension include:

VARIABLE STRENGTH	FACTOR	NASH COUNTY VALUE	NC COUNTY AVERAGE VALUE
Strongest	County Sales Tax	\$22,884,77	\$31,151,902
2nd Strongest	Debt Service Ratio of County Government	0.07	0.07
Weakest	Adjusted Tax Base	\$87,917	\$124,092

Communication: 58.29

This component assesses the availability and quality of communication infrastructure, such as broadband internet access, which is crucial for businesses and residents to stay connected and resilient during disruptions. Nash County's performance on this dimension is average when compared to other North Carolina counties, ranking 33rd in the state.

Notable variables for Nash County within this dimension include:

VARIABLE STRENGTH	FACTOR	NASH COUNTY VALUE	NC COUNTY AVERAGE VALUE
-------------------	--------	-------------------	-------------------------

Strongest	In-Vehicle High-Speed Mobile Data Availability	0.54	0.37
2nd Strongest	Local High-Speed Mobile Data Availability	0.82	0.66
Weakest	Broadband Availability	0.49	0.6

Housing & Transportation: 46.68

This component evaluates the accessibility and affordability of housing, as well as the availability of reliable transportation options, which are essential for a resilient workforce and economy. Nash County's performance on this dimension is fairly weak when compared to other North Carolina counties, ranking 74th in the state.

Notable variables for Nash County within this dimension include:

VARIABLE STRENGTH	FACTOR	NASH COUNTY VALUE	NC COUNTY AVERAGE VALUE
Strongest	Ratio of Average Estimated Home Value to Median Income	4.29	13.67
2nd Strongest	Percentage of People with Commute Times Over 45 Minutes	13.72%	16.69%
Weakest	Percentage of Households with More Residents than Rooms	3.07%	2.1%

Healthcare: 26.55

The healthcare component examines the availability and quality of healthcare facilities, services, and professionals, which are critical for maintaining a healthy and productive workforce. Nash County's performance on this dimension is average when compared to other North Carolina counties, ranking 48th in the state.

Notable variables for Nash County within this dimension include:

VARIABLE STRENGTH	FACTOR	NASH COUNTY VALUE	NC COUNTY AVERAGE VALUE
Strongest	Nurses per 10,000 Residents	344.33	262.64
2nd Strongest	Physicians per 10,000 Residents	18.33	16.05
Weakest	Nursing Home Beds per 1,000 Residents of Age	21.07	27.53

Community Cohesion: 61.82

This component looks at the strength of social networks, community engagement, and the ability of residents to work together to address challenges and support one another during times of adversity. Nash County's performance on this dimension is average when compared to other North Carolina counties, ranking 39th in the state.

Notable variables for Nash County within this dimension include:

VARIABLE STRENGTH	FACTOR	NASH COUNTY VALUE	NC COUNTY AVERAGE VALUE
Strongest	Nonprofits Organizations per 1,000 Residents	4.09	3.17
2nd Strongest	Percentage of Inactive Voters	9.86%	11.3%
Weakest	Violent Crimes per 10,000 Residents	3.45	3.07

Socioeconomics: 35.35

This component considers factors such as income levels, poverty rates, and inequality, which can impact a community's ability to withstand and recover from economic shocks. Nash County's performance on this dimension is average when compared to other North Carolina counties, ranking 69th in the state.

Notable variables for Nash County within this dimension include:

VARIABLE STRENGTH	FACTOR	NASH COUNTY VALUE	NC COUNTY AVERAGE VALUE
Strongest	Total Percentage of Population Below 150% Poverty Line	24.52%	25.93%
2nd Strongest	Gini Coefficient (Income Inequality)	0.45	0.46
Weakest	Unemployment Rate (Q4)	4.8%	3.9%

Education: 26.74

This component evaluates the quality of educational institutions and the educational attainment levels of the local population, which play a crucial role in developing a skilled and adaptable workforce. Nash County's performance on this dimension is weak when compared to other North Carolina counties, ranking 87th in the state.

Notable variables for Nash County within this dimension include:

VARIABLE STRENGTH	FACTOR	NASH COUNTY VALUE	NC COUNTY AVERAGE VALUE
Strongest	Teacher Attrition Rate	0.09	0.12
2nd Strongest	Graduation Percentage	89.4%	88.03%
Bottom 10 in NC, Weakest	Student to Teacher Ratio	19	14

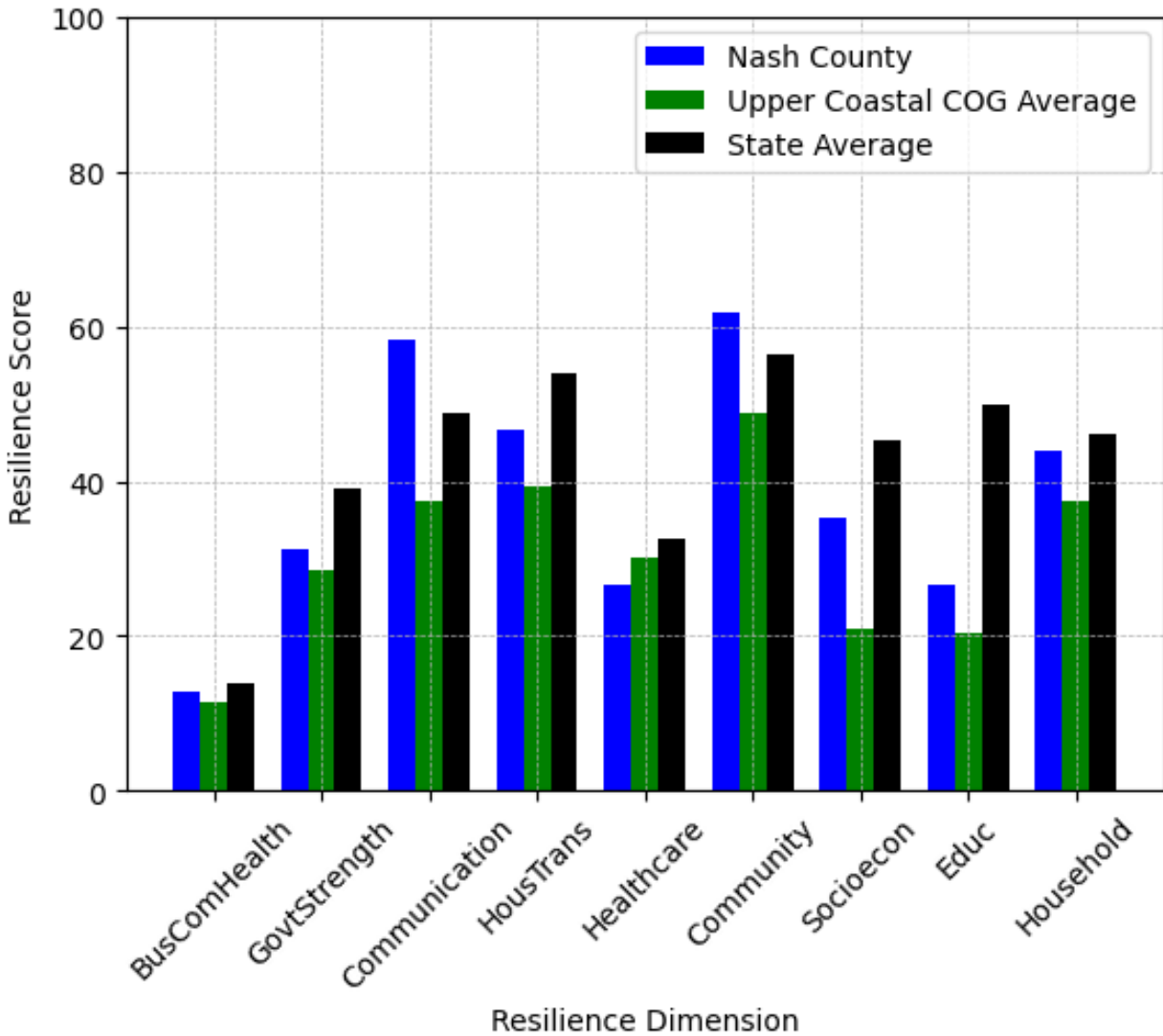
Household Characteristics: 43.83

This component examines factors such as the proportion of single-parent households, age distribution, and the proportion of individuals with disabilities, as these elements can influence a community's resilience and ability to recover from economic disruptions. Nash County's performance on this dimension is average when compared to other North Carolina counties, ranking 54th in the state.

Notable variables for Nash County within this dimension include:

VARIABLE STRENGTH	FACTOR	NASH COUNTY VALUE	NC COUNTY AVERAGE VALUE
Strongest	Percentage of Population with a Disability	15.083%	16.566%
2nd Strongest	Percentage of Population 65 and Older	18.77%	20.53%
Weakest	Percentage of Single Parent Households	42.801%	36.132%

Nash County's Resilience Dimension Scores Over Time As Compared to the Region and State Averages



Note: Resilience Scores are normalized from 1 to 100 with the most resilient county scoring 100. The Resilience Score is determined based on a county's performance relative to NC's other 99 counties.

Notable Trends in Resilience Indicators, 2017-2022

NOTE: The key trends in this section are identified based on change rates of at least .15 standard deviations over at least 5 years. Variables are positively oriented such that a positive trend indicates improved performance (e.g., 'improvement' in property crime is a lower crime rate, while 'decline' in property crime indicates a higher crime rate).

Trends in the Business Community Health dimension:

Total Employment Level: **-793** (5-year change rate = **-1.96%**, from 40,501 to 39,707)

↓ Change in rank from 23 to 25 in NC

Average Weekly Wages: **229 dollars** (5-year change rate = **29.74%**, from 770 to 999)

↑ Change in rank from 30 to 23 in NC

Real GDP in Current Dollars: **-361,167 dollars** (5-year change rate = **-6.59%**, from 5,480,315 to 5,119,148)

↓ Change in rank from 19 to 21 in NC

Trends in the County Government Fiscal Strength dimension:

Adjusted Tax Base: **12,079 dollars** (5-year change rate = **15.93%**, from 75,838 to 87,917)

↓ Change in rank from 66 to 73 in NC

County Sales Tax: **7,173,304 dollars** (5-year change rate = **45.66%**, from 15,711,466 to 22,884,770)

↓ Change in rank from 35 to 37 in NC

Trends in the Housing & Transportation dimension:

Ratio of Average Estimated Home Value to Median Income : **0.95** (5-year change rate = **28.49%**, from 3.34 to 4.29)

→ No change in rank

Average Available Rent Money less the Average HUD Fair Market Rent: **248.6 dollars** (5-year change rate = **60.24%**, from 412.7 to 661.3)

↑ Change in rank from 74 to 68 in NC

Trends in the Healthcare dimension:

Opioid Deaths per 100,000 Residents: **21.1** (5-year change rate = **131.88%**, from 16 to 37.1)

↓ Change in rank from 24 to 53 in NC

Nurses per 10,000 Residents: **2.8** (5-year change rate = **0.82%**, from 341.53 to 344.33)

↑ Change in rank from 19 to 17 in NC

Mental Health Professionals per 10,000 Residents: **0.54** (5-year change rate = **10.13%**, from 5.33 to 5.87)

↑ Change in rank from 48 to 47 in NC

Trends in the Community Cohesion dimension:

Violent Crimes per 10,000 Residents: **0.99** (4-year change rate = **40.16%**, from 2.46 to 3.45)

↓ Change in rank from 59 to 68 in NC

Property Crimes per 10,000 Residents: **2.46** (4-year change rate = **20.37%**, from 12.08 to 14.55)

↓ Change in rank from 19 to 47 in NC

Nonprofits Organizations per 1,000 Residents: **1.33** (5-year change rate = **47.87%**, from 2.77 to 4.09)

↑ Change in rank from 51 to 23 in NC

Trends in the Socioeconomics dimension:

Unemployment Rate (Q4): **-0.6 percent** (5-year change rate = **-11.59%**, from 5.5 to 4.8)

↓ Change in rank from 82 to 87 in NC

Median Household Income: **12,400 dollars** (5-year change rate = **25.25%**, from 49,100 to 61,500)

↑ Change in rank from 64 to 63 in NC

Trends in the Education dimension:

Graduation Percentage: **7.6 percent** (5-year change rate = **9.29%**, from 81.8 to 89.4)

↑ Change in rank from 90 to 37 in NC

Dropout Rate: **-1.15 percent** (5-year change rate = **-37.51%**, from 3.06 to 1.91)

↑ Change in rank from 82 to 65 in NC

Student to Teacher Ratio: **2** (4-year change rate = **10.37%**, from 17 to 19)

↓ Change in rank from 92 to 100 in NC

3rd Grade Reading Proficiency: **-12.2 percent** (5-year change rate = **-29.68%**, from 41.1 to 28.9)

↑ Change in rank from 92 to 90 in NC

Data Advisements:

- Availability of Broadband Services is not available for 2022 and was excluded from calculating this county's dimension and resilience score.
- Adoption Rate of Broadband Services is not available for 2022 and was excluded from calculating this county's dimension and resilience score.