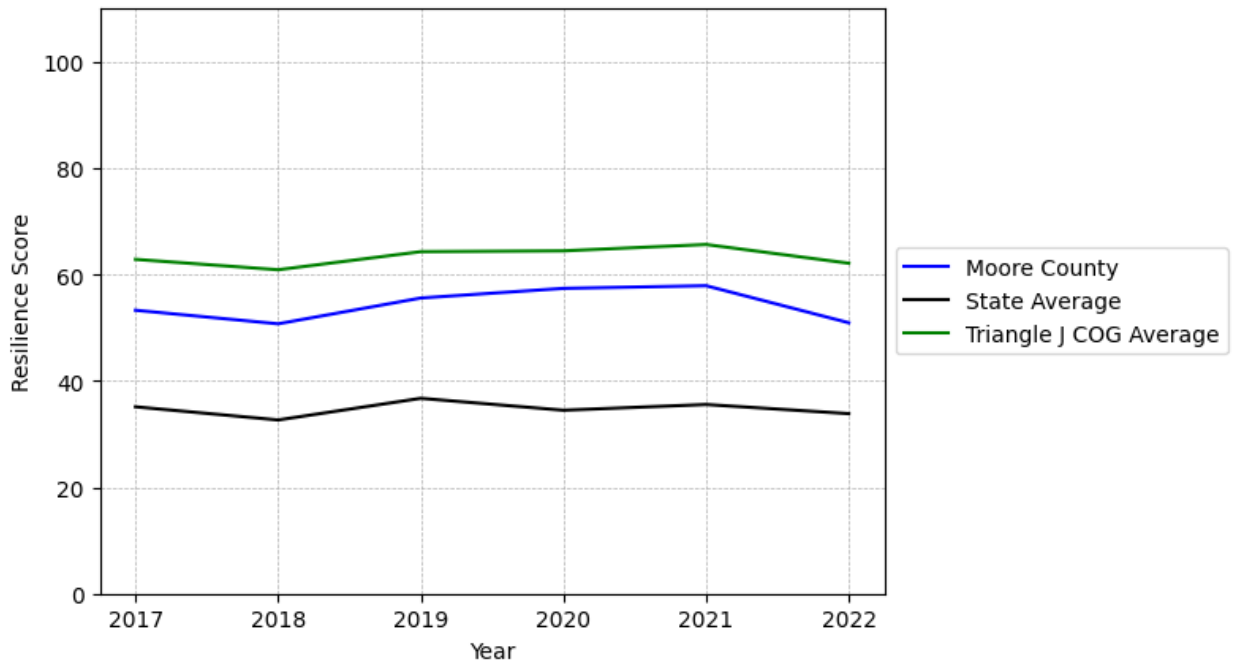


Moore County Summary

Resilience Score: 50.92

In 2022, Moore County achieved a Resilience Score of 50.92, which is fairly strong as compared to the North Carolina State average.

**Moore County's Resilience Score Over Time
As Compared to the Region and State Averages**



Note: Resilience Scores are normalized from 1 to 100 with the most resilient county scoring 100. The Resilience Score is determined based on a county's performance relative to NC's other 99 counties.

Moore County's Resilience Score is comprised of 9 distinct dimensions of resilience. Below are Moore County's scores for 2022 on those 9 dimensions, and their rank relative to other North Carolina counties.

Business Community Health: 17.78

This component examines the strength and diversity of the local business community, including factors such as the number of businesses, employment levels, and industry diversity. Moore County's performance on this dimension is average when compared to other North Carolina counties, ranking 21st in the state.

Notable variables for Moore County within this dimension include:

VARIABLE STRENGTH	FACTOR	MOORE COUNTY VALUE	NC COUNTY AVERAGE VALUE
Top 10 in NC, Strongest	Percentage of Companies in Science, Engineering, & Technology Industries	9.91%	6.13%
2nd Strongest	Science, Engineering, & Technology Industries Employment Percentage	2.55%	1.79%
Weakest	Private Sector Diversity	0.145	0.28

County Government Fiscal Strength: 18.2

This component looks at the financial health of local governments, including their ability to generate revenue, manage debt, and maintain adequate reserves to weather economic downturns. Moore County's performance on this dimension is weak when compared to other North Carolina counties, ranking 89th in the state.

Notable variables for Moore County within this dimension include:

VARIABLE STRENGTH	FACTOR	MOORE COUNTY VALUE	NC COUNTY AVERAGE VALUE
Strongest	Dependency Ratio of County Government	0.12	0.16
2nd Strongest	Quick Ratio of County Government	19.29	16.4
Bottom 10 in NC	Capital Assets Condition Ratio of County Government	0.31	0.51
Bottom 10 in NC, Weakest	Debt Service Ratio of County Government	0.21	0.07

Communication: 43.93

This component assesses the availability and quality of communication infrastructure, such as broadband internet access, which is crucial for businesses and residents to stay connected and

resilient during disruptions. Moore County's performance on this dimension is average when compared to other North Carolina counties, ranking 67th in the state.

Notable variables for Moore County within this dimension include:

VARIABLE STRENGTH	FACTOR	MOORE COUNTY VALUE	NC COUNTY AVERAGE VALUE
Strongest	Percentage of Population without Smartphones	14.34%	17.22%
2nd Strongest	Broadband Availability	0.55	0.6
Weakest	In-Vehicle High-Speed Mobile Data Availability	0.22	0.37

Housing & Transportation: 93.17

This component evaluates the accessibility and affordability of housing, as well as the availability of reliable transportation options, which are essential for a resilient workforce and economy. Moore County's performance on this dimension is strong when compared to other North Carolina counties, ranking 6th in the state.

Notable variables for Moore County within this dimension include:

VARIABLE STRENGTH	FACTOR	MOORE COUNTY VALUE	NC COUNTY AVERAGE VALUE
Top 10 in NC, Strongest	Average Available Rent Money less the Average HUD Fair Market Rent	\$1,201.3	\$799.87
2nd Strongest	Percentage of Households with More Residents than Rooms	1.17%	2.1%
Weakest	Percentage of People with Commute Times Over 45 Minutes	18.87%	16.69%

Healthcare: 36.31

The healthcare component examines the availability and quality of healthcare facilities, services, and professionals, which are critical for maintaining a healthy and productive workforce. Moore County's performance on this dimension is fairly strong when compared to other North Carolina counties, ranking 17th in the state.

Notable variables for Moore County within this dimension include:

VARIABLE STRENGTH	FACTOR	MOORE COUNTY VALUE	NC COUNTY AVERAGE VALUE
Top 10 in NC, Strongest	Physicians per 10,000 Residents	35.41	16.05
2nd Strongest	Nurses per 10,000 Residents	453.5	262.64
Weakest	Opioid Deaths per 100,000 Residents	44.6	38.73

Community Cohesion: 77.81

This component looks at the strength of social networks, community engagement, and the ability of residents to work together to address challenges and support one another during times of adversity. Moore County's performance on this dimension is strong when compared to other North Carolina counties, ranking 10th in the state.

Notable variables for Moore County within this dimension include:

VARIABLE STRENGTH	FACTOR	MOORE COUNTY VALUE	NC COUNTY AVERAGE VALUE
Top 10 in NC, Strongest	Yearly Population Change Percentage	2.607%	0.906%
2nd Strongest	Percentage of Inactive Voters	9%	11.3%
Weakest	Nonprofits Organizations per 1,000 Residents	3.9	3.17

Socioeconomics: 78.59

This component considers factors such as income levels, poverty rates, and inequality, which can impact a community's ability to withstand and recover from economic shocks. Moore County's performance on this dimension is strong when compared to other North Carolina counties, ranking 7th in the state.

Notable variables for Moore County within this dimension include:

VARIABLE STRENGTH	FACTOR	MOORE COUNTY VALUE	NC COUNTY AVERAGE VALUE
Top 10 in NC, Strongest	Percentage of Population without Health Insurance	8.33%	11.23%
Top 10 in NC, 2nd Strongest	Total Percentage of Population Below 150% Poverty Line	16.44%	25.93%
Top 10 in NC	Percentage of Population	5.15%	9.05%

	without a High School Diploma		
Top 10 in NC	Population 25+ with at least a Bachelor's Degree	39.87%	24.4%
Weakest	Unemployment Rate (Q4)	3.5%	3.9%

Education: 59.48

This component evaluates the quality of educational institutions and the educational attainment levels of the local population, which play a crucial role in developing a skilled and adaptable workforce. Moore County's performance on this dimension is fairly strong when compared to other North Carolina counties, ranking 22nd in the state.

Notable variables for Moore County within this dimension include:

VARIABLE STRENGTH	FACTOR	MOORE COUNTY VALUE	NC COUNTY AVERAGE VALUE
Strongest	Graduation Percentage	92.8%	88.03%
2nd Strongest	Postsecondary Enrollment Percentage	33.08%	25.48%
Bottom 10 in NC, Weakest	Student to Teacher Ratio	16	14

Household Characteristics: 49.03

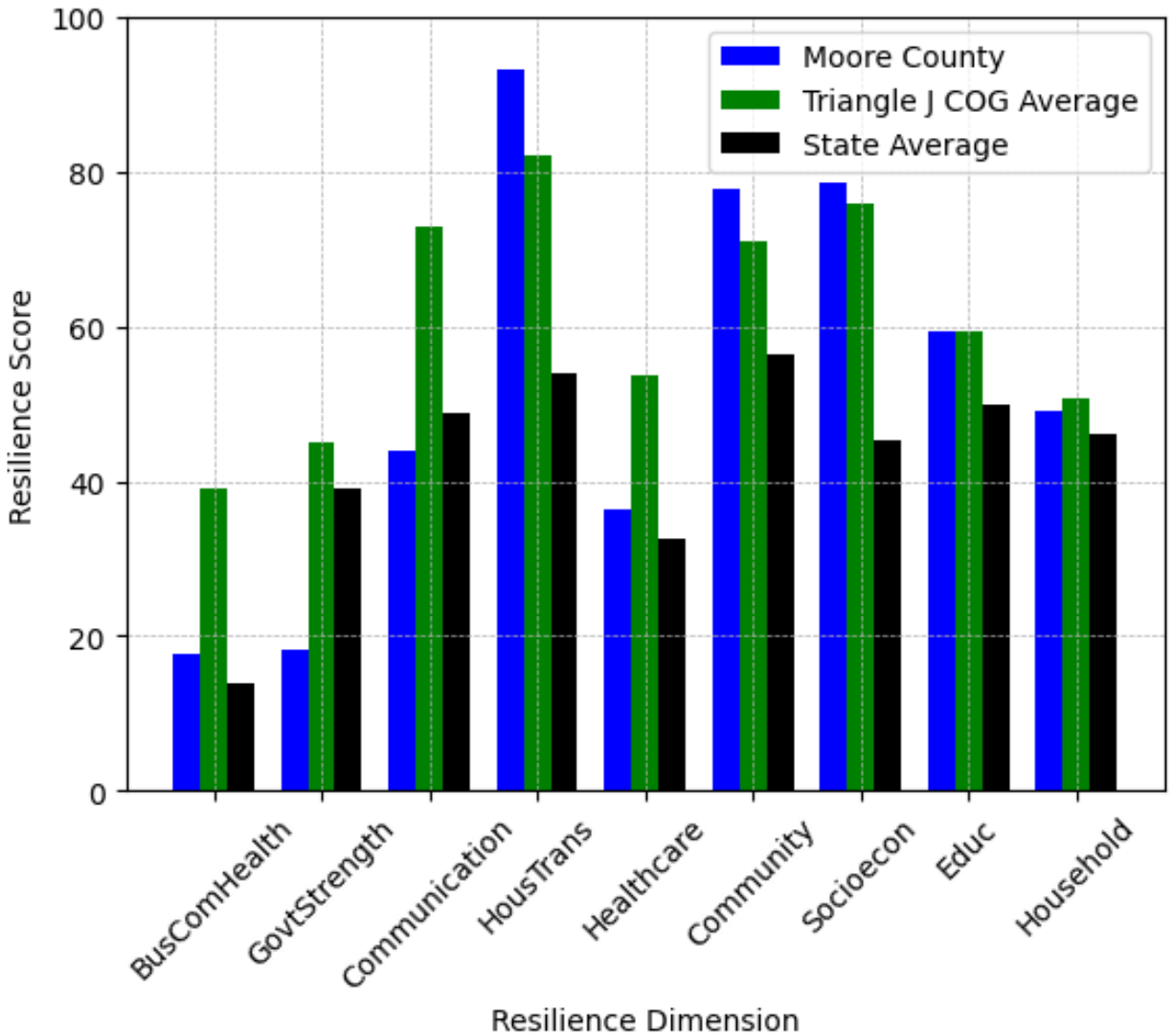
This component examines factors such as the proportion of single-parent households, age distribution, and the proportion of individuals with disabilities, as these elements can influence a community's resilience and ability to recover from economic disruptions. Moore County's performance on this dimension is average when compared to other North Carolina counties, ranking 35th in the state.

Notable variables for Moore County within this dimension include:

VARIABLE STRENGTH	FACTOR	MOORE COUNTY VALUE	NC COUNTY AVERAGE VALUE
Top 10 in NC, Strongest	Percentage of Single Parent Households	21.891%	36.132%
2nd Strongest	Percentage of Population with a Disability	14.329%	16.566%
Weakest	Percentage of Population 65 and Older	24.08%	20.53%



Moore County's Resilience Dimension Scores Over Time As Compared to the Region and State Averages



Note: Resilience Scores are normalized from 1 to 100 with the most resilient county scoring 100. The Resilience Score is determined based on a county's performance relative to NC's other 99 counties.

Notable Trends in Resilience Indicators, 2017-2022

NOTE: The key trends in the this section are identified based on change rates of at least .15 standard deviations over at least 5 years. Variables are positively oriented such that a positive trend indicates improved performance (e.g., 'improvement' in property crime is a lower crime rate, while 'decline' in property crime indicates a higher crime rate).

Trends in the Business Community Health dimension:

Total Employment Level: **2,793** (5-year change rate = **7.94%**, from 35,175 to 37,968)

↑ Change in rank from 29 to 27 in NC

Average Weekly Wages: **250 dollars** (5-year change rate = **31.21%**, from 801 to 1,051)

↑ Change in rank from 23 to 14 in NC

Real GDP in Current Dollars: **413,704 dollars** (5-year change rate = **11.49%**, from 3,600,491 to 4,014,195)

↑ Change in rank from 30 to 28 in NC

Trends in the County Government Fiscal Strength dimension:

Adjusted Tax Base: **7,785 dollars** (5-year change rate = **6.15%**, from 126,671 to 134,456)

↓ Change in rank from 20 to 29 in NC

County Sales Tax: **15,045,522 dollars** (5-year change rate = **79.8%**, from 18,854,382 to 33,899,904)

↑ Change in rank from 29 to 25 in NC

Trends in the Housing & Transportation dimension:

Ratio of Average Estimated Home Value to Median Income : **1.37** (5-year change rate = **25.21%**, from 5.43 to 6.8)

↑ Change in rank from 45 to 43 in NC

Average Available Rent Money less the Average HUD Fair Market Rent: **324.5 dollars** (5-year change rate = **37.01%**, from 876.8 to 1,201.3)

↓ Change in rank from 4 to 5 in NC

Trends in the Healthcare dimension:

Opioid Deaths per 100,000 Residents: **28.1** (5-year change rate = **170.3%**, from 16.5 to 44.6)

↓ Change in rank from 26 to 69 in NC

Nurses per 10,000 Residents: **-13.13** (5-year change rate = **-2.81%**, from 466.63 to 453.5)

↓ Change in rank from 12 to 13 in NC

Physicians per 10,000 Residents: **0.17** (5-year change rate = **0.48%**, from 35.24 to 35.41)

→ No change in rank

Mental Health Professionals per 10,000 Residents: **-1.06** (5-year change rate = **-10.87%**, from 9.75 to 8.69)

↓ Change in rank from 10 to 22 in NC

Trends in the Community Cohesion dimension:

Violent Crimes per 10,000 Residents: **-0.22** (4-year change rate = **-13.64%**, from 1.62 to 1.4)

↑ Change in rank from 30 to 24 in NC

Property Crimes per 10,000 Residents: **-2.98** (4-year change rate = **-20.18%**, from 14.76 to 11.78)

↑ Change in rank from 31 to 29 in NC

Nonprofits Organizations per 1,000 Residents: **-0.41** (5-year change rate = **-9.61%**, from 4.31 to 3.9)

↓ Change in rank from 17 to 29 in NC

Trends in the Socioeconomics dimension:

Unemployment Rate (Q4): **-0.7 percent** (5-year change rate = **-16.67%**, from 4.2 to 3.5)

↓ Change in rank from 44 to 45 in NC

Median Household Income: **21,700 dollars** (5-year change rate = **33.08%**, from 65,600 to 87,300)

→ No change in rank

Trends in the Education dimension:

Graduation Percentage: **4.6 percent** (5-year change rate = **5.22%**, from 88.2 to 92.8)

↑ Change in rank from 42 to 12 in NC

Dropout Rate: **-1.37 percent** (5-year change rate = **-61.52%**, from 2.23 to 0.86)

↑ Change in rank from 53 to 20 in NC

3rd Grade Reading Proficiency: **-9.1 percent** (5-year change rate = **-14.24%**, from 63.9 to 54.8)

↓ Change in rank from 11 to 14 in NC

Data Advisements:

- Availability of Broadband Services is not available for 2022 and was excluded from calculating this county's dimension and resilience score.
- Adoption Rate of Broadband Services is not available for 2022 and was excluded from calculating this county's dimension and resilience score.