

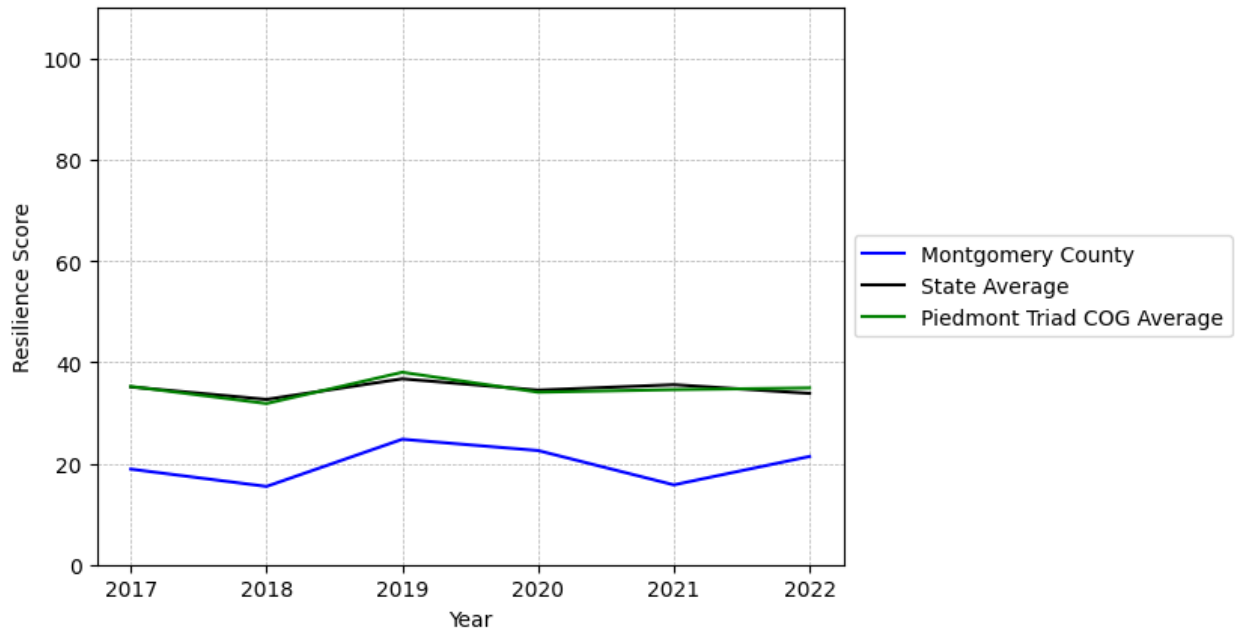
# Montgomery County Summary

---

**Resilience Score: 21.38**

In 2022, Montgomery County achieved a Resilience Score of 21.38, which is fairly weak as compared to the North Carolina State average.

**Montgomery County's Resilience Score Over Time  
As Compared to the Region and State Averages**



*Note: Resilience Scores are normalized from 1 to 100 with the most resilient county scoring 100. The Resilience Score is determined based on a county's performance relative to NC's other 99 counties.*

Montgomery County's Resilience Score is comprised of 9 distinct dimensions of resilience. Below are Montgomery County's scores for 2022 on those 9 dimensions, and their rank relative to other North Carolina counties.

### **Business Community Health: 11.01**

This component examines the strength and diversity of the local business community, including factors such as the number of businesses, employment levels, and industry diversity. Montgomery County's performance on this dimension is average when compared to other North Carolina counties, ranking 52nd in the state.

Notable variables for Montgomery County within this dimension include:

<b>VARIABLE STRENGTH</b>	<b>FACTOR</b>	<b>MONTGOMERY COUNTY VALUE</b>	<b>NC COUNTY AVERAGE VALUE</b>
<b>Strongest</b>	Private Sector Diversity	0.408	0.28
<b>2nd Strongest</b>	Average Weekly Wages	\$94	\$951
<b>Weakest</b>	Ratio of Available Child Care Slots to Number of Children under Five	0.47	0.59

---

### **County Government Fiscal Strength: 86.3**

This component looks at the financial health of local governments, including their ability to generate revenue, manage debt, and maintain adequate reserves to weather economic downturns. Montgomery County's performance on this dimension is strong when compared to other North Carolina counties, ranking 5th in the state.

Notable variables for Montgomery County within this dimension include:

<b>VARIABLE STRENGTH</b>	<b>FACTOR</b>	<b>MONTGOMERY COUNTY VALUE</b>	<b>NC COUNTY AVERAGE VALUE</b>
<b>Top 10 in NC, Strongest</b>	Operations Ratio of County Government	1.39	1.11
<b>Top 10 in NC, 2nd Strongest</b>	Solvency Ratio of County Government	90.53	46.7
<b>Top 10 in NC</b>	Quick Ratio of County Government	26.86	16.4
<b>Weakest</b>	County Sales Tax	\$6,788,812	\$31,151,902

---

### **Communication: 35.17**

This component assesses the availability and quality of communication infrastructure, such as broadband internet access, which is crucial for businesses and residents to stay connected and resilient during disruptions. Montgomery County's performance on this dimension is fairly weak when compared to other North Carolina counties, ranking 83rd in the state.

Notable variables for Montgomery County within this dimension include:

VARIABLE STRENGTH	FACTOR	MONTGOMERY COUNTY VALUE	NC COUNTY AVERAGE VALUE
<b>Strongest</b>	Percentage of Population without Smartphones	19.48%	17.22%
<b>2nd Strongest</b>	Local High-Speed Mobile Data Availability	0.57	0.66
<b>Weakest</b>	Broadband Availability	0.45	0.6

### **Housing & Transportation: 48.62**

This component evaluates the accessibility and affordability of housing, as well as the availability of reliable transportation options, which are essential for a resilient workforce and economy.

Montgomery County's performance on this dimension is fairly weak when compared to other North Carolina counties, ranking 71st in the state.

Notable variables for Montgomery County within this dimension include:

VARIABLE STRENGTH	FACTOR	MONTGOMERY COUNTY VALUE	NC COUNTY AVERAGE VALUE
<b>Strongest</b>	Percentage of People with Commute Times Over 45 Minutes	13.13%	16.69%
<b>2nd Strongest</b>	Percentage of Population without Vehicles	4.43%	5.75%
<b>Bottom 10 in NC, Weakest</b>	Percentage of Owner-Occupied Homes	45.68%	57.87%

### **Healthcare: 9.41**

The healthcare component examines the availability and quality of healthcare facilities, services, and professionals, which are critical for maintaining a healthy and productive workforce.

Montgomery County's performance on this dimension is weak when compared to other North Carolina counties, ranking 95th in the state.

Notable variables for Montgomery County within this dimension include:

VARIABLE STRENGTH	FACTOR	MONTGOMERY COUNTY VALUE	NC COUNTY AVERAGE VALUE
<b>Strongest</b>	Nursing Home Beds per 1,000 Residents of Age 65+	24.61	27.53
<b>2nd Strongest</b>	Physicians per 10,000	8.54	16.05

<b>Bottom 10 in NC, Weakest</b>	Residents		
	Mental Health Professionals per 10,000 Residents	1.17	6.6

### Community Cohesion: 50.44

This component looks at the strength of social networks, community engagement, and the ability of residents to work together to address challenges and support one another during times of adversity. Montgomery County's performance on this dimension is average when compared to other North Carolina counties, ranking 72nd in the state.

Notable variables for Montgomery County within this dimension include:

VARIABLE STRENGTH	FACTOR	MONTGOMERY COUNTY VALUE	NC COUNTY AVERAGE VALUE
<b>Strongest</b>	Violent Crimes per 10,000 Residents	2.71	3.07
<b>2nd Strongest</b>	Percentage of Inactive Voters	11.21%	11.3%
<b>Weakest</b>	Yearly Population Change Percentage	0.043%	0.906%

### Socioeconomics: 38.74

This component considers factors such as income levels, poverty rates, and inequality, which can impact a community's ability to withstand and recover from economic shocks. Montgomery County's performance on this dimension is average when compared to other North Carolina counties, ranking 61st in the state.

Notable variables for Montgomery County within this dimension include:

VARIABLE STRENGTH	FACTOR	MONTGOMERY COUNTY VALUE	NC COUNTY AVERAGE VALUE
<b>Top 10 in NC, Strongest</b>	Percentage of Households Spending more than 30% Income on Housing	18.07%	24.53%
<b>2nd Strongest</b>	Percentage of Households with Income over \$200k	4.77%	5.28%
<b>Weakest</b>	Percentage of Population without Health Insurance	13.86%	11.23%

---

**Education: 53.97**

This component evaluates the quality of educational institutions and the educational attainment levels of the local population, which play a crucial role in developing a skilled and adaptable workforce. Montgomery County's performance on this dimension is average when compared to other North Carolina counties, ranking 35th in the state.

Notable variables for Montgomery County within this dimension include:

<b>VARIABLE STRENGTH</b>	<b>FACTOR</b>	<b>MONTGOMERY COUNTY VALUE</b>	<b>NC COUNTY AVERAGE VALUE</b>
<b>Top 10 in NC, Strongest</b>	Graduation Percentage	94.9%	88.03%
<b>2nd Strongest</b>	Dropout Rate	0.52%	1.65%
<b>Weakest</b>	3rd Grade Reading Proficiency	32.8%	43.1%

---

**Household Characteristics: 18.47**

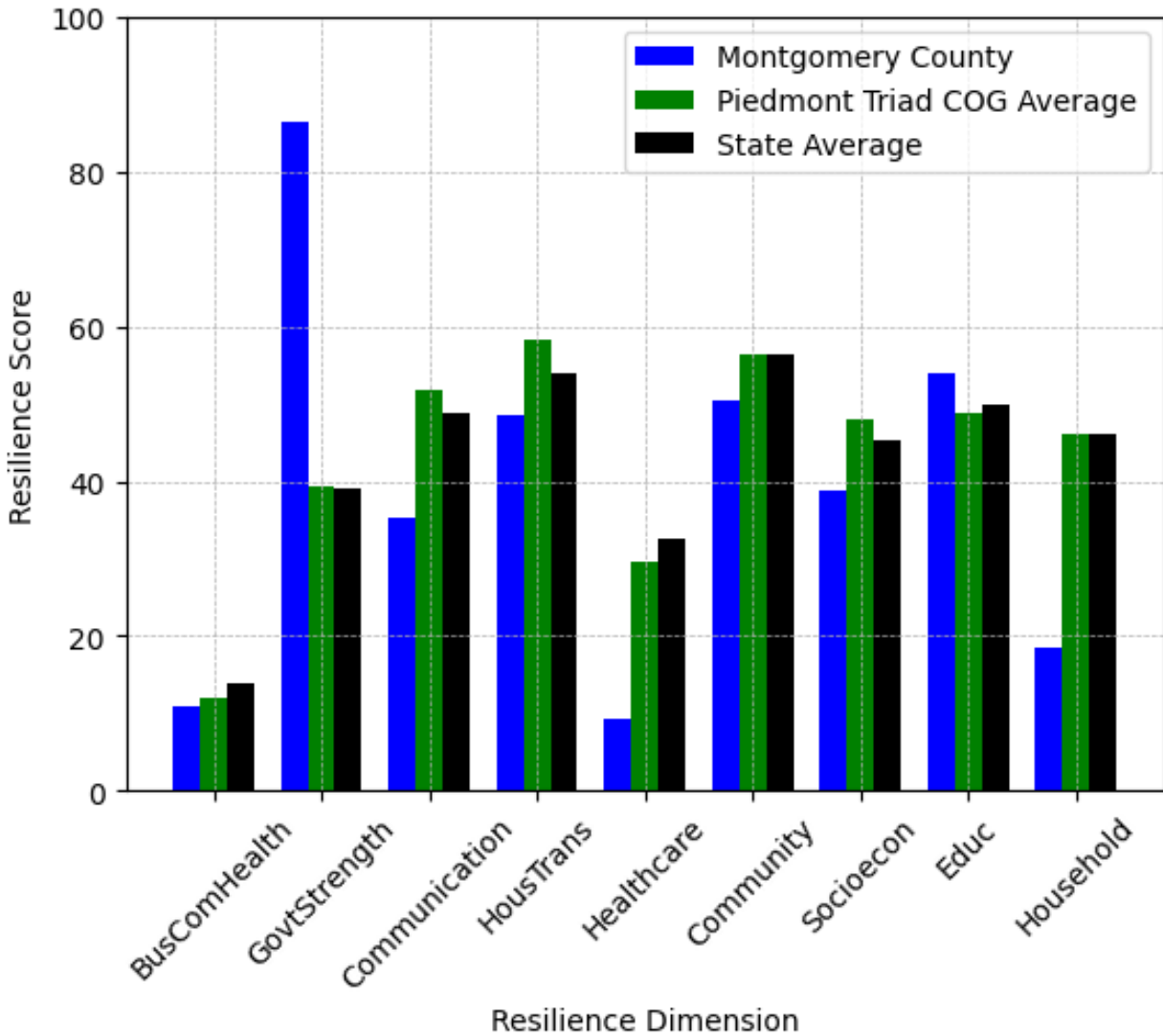
This component examines factors such as the proportion of single-parent households, age distribution, and the proportion of individuals with disabilities, as these elements can influence a community's resilience and ability to recover from economic disruptions. Montgomery County's performance on this dimension is weak when compared to other North Carolina counties, ranking 94th in the state.

Notable variables for Montgomery County within this dimension include:

<b>VARIABLE STRENGTH</b>	<b>FACTOR</b>	<b>MONTGOMERY COUNTY VALUE</b>	<b>NC COUNTY AVERAGE VALUE</b>
<b>Strongest</b>	Percentage of Population 17 and Younger	21.23%	20.37%
<b>2nd Strongest</b>	Percentage of Population 65 and Older	21.15%	20.53%
<b>Bottom 10 in NC, Weakest</b>	Percentage of Population with Limited English Proficiency	3.355%	1.454%

---

## Montgomery County's Resilience Dimension Scores Over Time As Compared to the Region and State Averages



*Note: Resilience Scores are normalized from 1 to 100 with the most resilient county scoring 100. The Resilience Score is determined based on a county's performance relative to NC's other 99 counties.*

## **Notable Trends in Resilience Indicators, 2017-2022**

*NOTE: The key trends in the this section are identified based on change rates of at least .15 standard deviations over at least 5 years. Variables are positively oriented such that a positive trend indicates improved performance (e.g., 'improvement' in property crime is a lower crime rate, while 'decline' in property crime indicates a higher crime rate).*

### **Trends in the Business Community Health dimension:**

Total Employment Level: **-307** (5-year change rate = **-3.25%**, from 9,458 to 9,151)

↓ Change in rank from 68 to 70 in NC

Average Weekly Wages: **212 dollars** (5-year change rate = **29.12%**, from 728 to 940)

↑ Change in rank from 43 to 41 in NC

Real GDP in Current Dollars: **88,952 dollars** (5-year change rate = **8.86%**, from 1,004,350 to 1,093,302)

→ No change in rank

Ratio of Available Child Care Slots to Number of Children under Five: **-0.16** (5-year change rate = **-25.55%**, from 0.64 to 0.47)

↓ Change in rank from 50 to 73 in NC

### **Trends in the County Government Fiscal Strength dimension:**

Adjusted Tax Base: **30,317 dollars** (5-year change rate = **28.63%**, from 105,894 to 136,211)

↑ Change in rank from 37 to 28 in NC

County Sales Tax: **2,420,872 dollars** (5-year change rate = **55.42%**, from 4,367,940 to 6,788,812)

↑ Change in rank from 77 to 75 in NC

### **Trends in the Housing & Transportation dimension:**

Ratio of Average Estimated Home Value to Median Income : **4.96** (5-year change rate = **50.87%**, from 9.76 to 14.72)

↓ Change in rank from 67 to 74 in NC

Average Available Rent Money less the Average HUD Fair Market Rent: **299.3 dollars** (5-year change rate = **60.59%**, from 494 to 793.3)

↑ Change in rank from 56 to 47 in NC

**Trends in the Healthcare dimension:**

Opioid Deaths per 100,000 Residents: **37** (5-year change rate = **168.95%**, from 21.9 to 58.9)

↓ Change in rank from 46 to 89 in NC

Nurses per 10,000 Residents: **-9.76** (5-year change rate = **-9.66%**, from 101.08 to 91.32)

↓ Change in rank from 75 to 77 in NC

Physicians per 10,000 Residents: **5.45** (5-year change rate = **176.38%**, from 3.09 to 8.54)

↑ Change in rank from 91 to 66 in NC

Mental Health Professionals per 10,000 Residents: **-2.69** (5-year change rate = **-69.69%**, from 3.86 to 1.17)

↓ Change in rank from 75 to 98 in NC

**Trends in the Community Cohesion dimension:**

Violent Crimes per 10,000 Residents: **0.36** (4-year change rate = **15.31%**, from 2.35 to 2.71)

→ No change in rank

Property Crimes per 10,000 Residents: **-7.07** (4-year change rate = **-29.7%**, from 23.82 to 16.75)

↑ Change in rank from 68 to 63 in NC



Nonprofits Organizations per 1,000 Residents: **-0.47** (5-year change rate = **-16.59%**, from 2.82 to 2.35)

↓ Change in rank from 47 to 64 in NC

**Trends in the Socioeconomics dimension:**

Unemployment Rate (Q4): **-0.6 percent** (5-year change rate = **-15.2%**, from 4.2 to 3.5)

↓ Change in rank from 43 to 51 in NC

Median Household Income: **13,900 dollars** (5-year change rate = **28.72%**, from 48,400 to 62,300)

↑ Change in rank from 69 to 62 in NC

**Trends in the Education dimension:**

Graduation Percentage: **6.5 percent** (5-year change rate = **7.35%**, from 88.4 to 94.9)

↑ Change in rank from 39 to 2 in NC

Dropout Rate: **-1.52 percent** (5-year change rate = **-74.51%**, from 2.04 to 0.52)

↑ Change in rank from 41 to 12 in NC

Student to Teacher Ratio: **-1** (4-year change rate = **-7.61%**, from 14 to 13)

↑ Change in rank from 38 to 30 in NC

3rd Grade Reading Proficiency: **-18.2 percent** (5-year change rate = **-35.69%**, from 51 to 32.8)

↓ Change in rank from 64 to 84 in NC

**Data Advisements:**

- Availability of Broadband Services is not available for 2022 and was excluded from calculating this county's dimension and resilience score.
- Adoption Rate of Broadband Services is not available for 2022 and was excluded from calculating this county's dimension and resilience score.