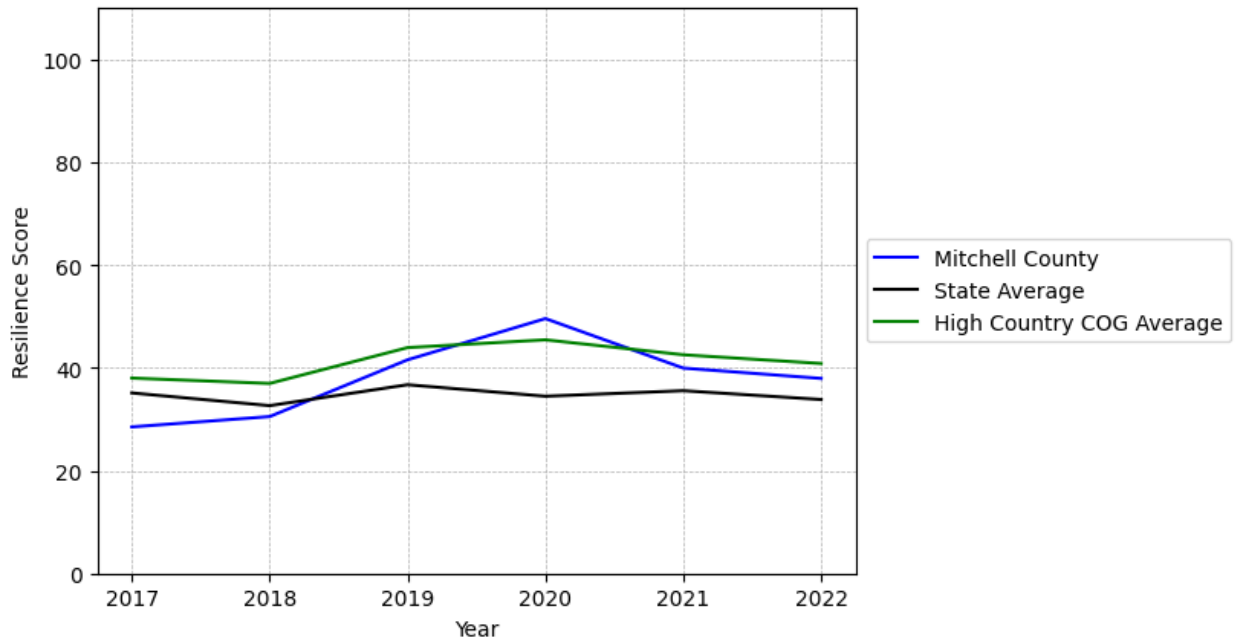


Mitchell County Summary

Resilience Score: 37.94

In 2022, Mitchell County achieved a Resilience Score of 37.94, which is average as compared to the North Carolina State average.

**Mitchell County's Resilience Score Over Time
As Compared to the Region and State Averages**



Note: Resilience Scores are normalized from 1 to 100 with the most resilient county scoring 100. The Resilience Score is determined based on a county's performance relative to NC's other 99 counties.

Mitchell County's Resilience Score is comprised of 9 distinct dimensions of resilience. Below are Mitchell County's scores for 2022 on those 9 dimensions, and their rank relative to other North Carolina counties.

Business Community Health: 8.26

This component examines the strength and diversity of the local business community, including factors such as the number of businesses, employment levels, and industry diversity. Mitchell County's performance on this dimension is average when compared to other North Carolina counties, ranking 72nd in the state.

Notable variables for Mitchell County within this dimension include:

VARIABLE STRENGTH	FACTOR	MITCHELL COUNTY VALUE	NC COUNTY AVERAGE VALUE
Strongest	Private Sector Diversity	0.486	0.28
2nd Strongest	Percentage of Companies in Science, Engineering, & Technology Industries	4.98%	6.13%
Weakest	Ratio of Available Child Care Slots to Number of Children under Five	0.39	0.59

County Government Fiscal Strength: 34.38

This component looks at the financial health of local governments, including their ability to generate revenue, manage debt, and maintain adequate reserves to weather economic downturns. Mitchell County's performance on this dimension is average when compared to other North Carolina counties, ranking 66th in the state.

Notable variables for Mitchell County within this dimension include:

VARIABLE STRENGTH	FACTOR	MITCHELL COUNTY VALUE	NC COUNTY AVERAGE VALUE
Top 10 in NC, Strongest	Debt Service Ratio of County Government	0.01	0.07
2nd Strongest	Capital Assets Condition Ratio of County Government	0.61	0.51
Bottom 10 in NC	Operations Ratio of County Government	1	1.11
Bottom 10 in NC, Weakest	Quick Ratio of County Government	4.63	16.4

Communication: 50.71

This component assesses the availability and quality of communication infrastructure, such as broadband internet access, which is crucial for businesses and residents to stay connected and

resilient during disruptions. Mitchell County's performance on this dimension is average when compared to other North Carolina counties, ranking 48th in the state.

Notable variables for Mitchell County within this dimension include:

VARIABLE STRENGTH	FACTOR	MITCHELL COUNTY VALUE	NC COUNTY AVERAGE VALUE
Top 10 in NC, Strongest	Broadband Availability	0.86	0.6
2nd Strongest	In-Vehicle High-Speed Mobile Data Availability	0.31	0.37
Bottom 10 in NC, Weakest	Percentage of Population without Smartphones	23.69%	17.22%

Housing & Transportation: 57.76

This component evaluates the accessibility and affordability of housing, as well as the availability of reliable transportation options, which are essential for a resilient workforce and economy. Mitchell County's performance on this dimension is average when compared to other North Carolina counties, ranking 54th in the state.

Notable variables for Mitchell County within this dimension include:

VARIABLE STRENGTH	FACTOR	MITCHELL COUNTY VALUE	NC COUNTY AVERAGE VALUE
Strongest	Percentage of People Driving Alone to Work	83.96%	86.36%
2nd Strongest	Percentage of Households with More Residents than Rooms	1.17%	2.1%
Weakest	Ratio of Average Estimated Home Value to Median Income	29.54	13.67

Healthcare: 34.58

The healthcare component examines the availability and quality of healthcare facilities, services, and professionals, which are critical for maintaining a healthy and productive workforce. Mitchell County's performance on this dimension is average when compared to other North Carolina counties, ranking 23rd in the state.

Notable variables for Mitchell County within this dimension include:

VARIABLE	FACTOR	MITCHELL COUNTY	NC COUNTY
----------	--------	-----------------	-----------

STRENGTH		VALUE	AVERAGE VALUE
Strongest	Nursing Home Beds per 1,000 Residents of Age 65+	34.84	27.53
2nd Strongest	Mental Health Professionals per 10,000 Residents	8.73	6.6
Weakest	Nurses per 10,000 Residents	187.97	262.64

Community Cohesion: 69.95

This component looks at the strength of social networks, community engagement, and the ability of residents to work together to address challenges and support one another during times of adversity. Mitchell County's performance on this dimension is fairly strong when compared to other North Carolina counties, ranking 20th in the state.

Notable variables for Mitchell County within this dimension include:

VARIABLE STRENGTH	FACTOR	MITCHELL COUNTY VALUE	NC COUNTY AVERAGE VALUE
Top 10 in NC, Strongest	Violent Crimes per 10,000 Residents	0	3.07
Top 10 in NC, 2nd Strongest	Property Crimes per 10,000 Residents	0.2	15.74
Weakest	Nonprofits Organizations per 1,000 Residents	1.42	3.17

Socioeconomics: 47.68

This component considers factors such as income levels, poverty rates, and inequality, which can impact a community's ability to withstand and recover from economic shocks. Mitchell County's performance on this dimension is average when compared to other North Carolina counties, ranking 46th in the state.

Notable variables for Mitchell County within this dimension include:

VARIABLE STRENGTH	FACTOR	MITCHELL COUNTY VALUE	NC COUNTY AVERAGE VALUE
Strongest	Percentage of Households Spending more than 30% Income on Housing	19.62%	24.53%
2nd Strongest	Total Percentage of Population Below 150%	20.87%	25.93%

	Poverty Line		
Weakest	Percentage of Households with Income over \$200k	3.1%	5.28%

Education: 55.96

This component evaluates the quality of educational institutions and the educational attainment levels of the local population, which play a crucial role in developing a skilled and adaptable workforce. Mitchell County's performance on this dimension is fairly strong when compared to other North Carolina counties, ranking 30th in the state.

Notable variables for Mitchell County within this dimension include:

VARIABLE STRENGTH	FACTOR	MITCHELL COUNTY VALUE	NC COUNTY AVERAGE VALUE
Top 10 in NC, Strongest	Dropout Rate	0%	1.65%
Top 10 in NC, 2nd Strongest	Student to Teacher Ratio	12	14
Top 10 in NC	Postsecondary Enrollment Percentage	37.89%	25.48%
Bottom 10 in NC, Weakest	Graduation Percentage	78.5%	88.03%

Household Characteristics: 49.17

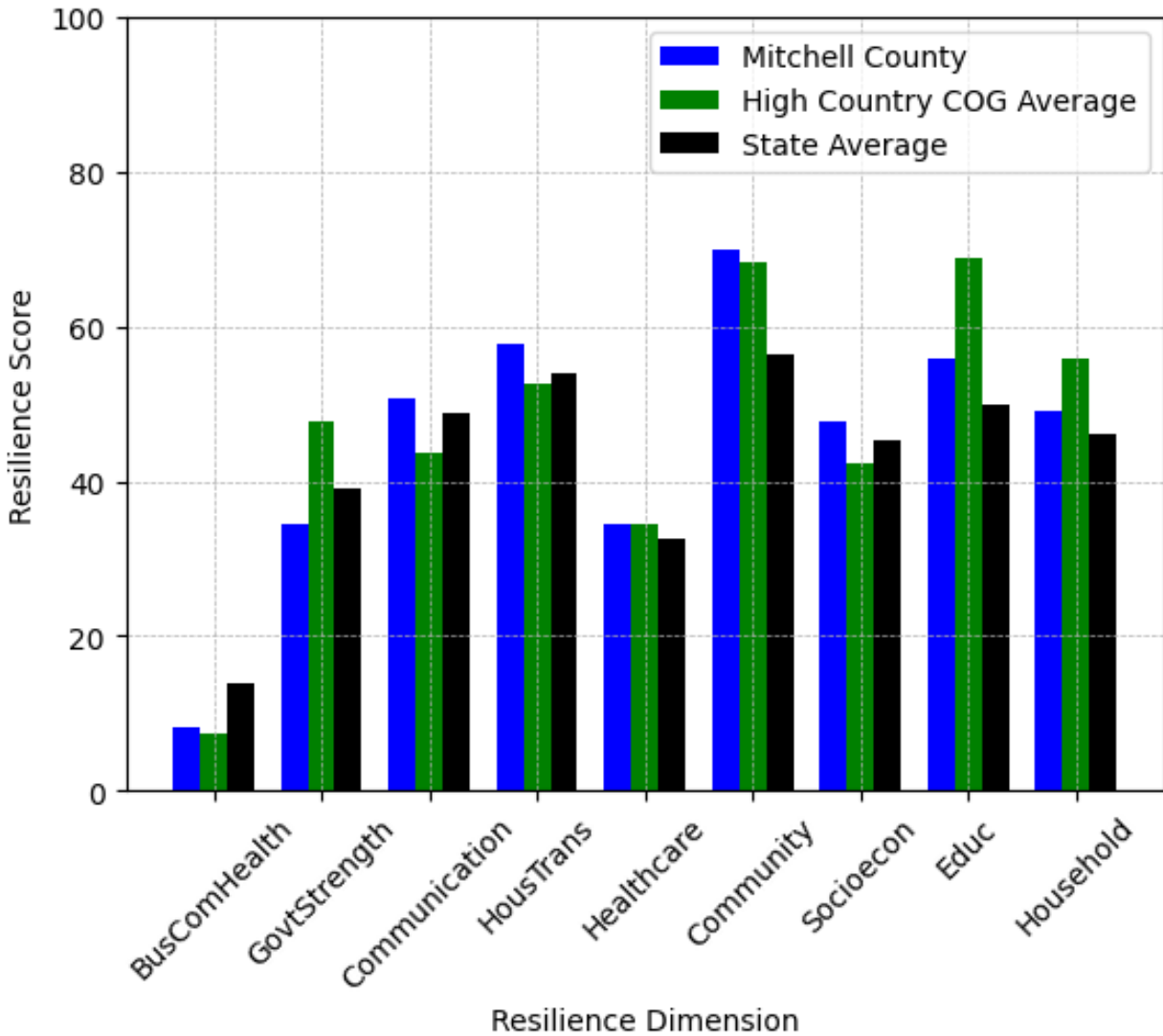
This component examines factors such as the proportion of single-parent households, age distribution, and the proportion of individuals with disabilities, as these elements can influence a community's resilience and ability to recover from economic disruptions. Mitchell County's performance on this dimension is average when compared to other North Carolina counties, ranking 34th in the state.

Notable variables for Mitchell County within this dimension include:

VARIABLE STRENGTH	FACTOR	MITCHELL COUNTY VALUE	NC COUNTY AVERAGE VALUE
Strongest	Percentage of Population with Limited English Proficiency	0.534%	1.454%
2nd Strongest	Percentage of Population 17 and Younger	18.16%	20.37%
Weakest	Percentage of Population 65 and Older	25.05%	20.53%



Mitchell County's Resilience Dimension Scores Over Time As Compared to the Region and State Averages



Note: Resilience Scores are normalized from 1 to 100 with the most resilient county scoring 100. The Resilience Score is determined based on a county's performance relative to NC's other 99 counties.

Notable Trends in Resilience Indicators, 2017-2022

NOTE: The key trends in the this section are identified based on change rates of at least .15 standard deviations over at least 5 years. Variables are positively oriented such that a positive trend indicates improved performance (e.g., 'improvement' in property crime is a lower crime rate, while 'decline' in property crime indicates a higher crime rate).

Trends in the Business Community Health dimension:

Total Employment Level: **186** (5-year change rate = **3.97%**, from 4,688 to 4,874)

↓ Change in rank from 83 to 84 in NC

Average Weekly Wages: **171 dollars** (5-year change rate = **23.95%**, from 714 to 885)

↓ Change in rank from 53 to 67 in NC

Real GDP in Current Dollars: **-41,900 dollars** (5-year change rate = **-7.78%**, from 538,275 to 496,375)

↓ Change in rank from 83 to 84 in NC

Trends in the County Government Fiscal Strength dimension:

Adjusted Tax Base: **12,580 dollars** (5-year change rate = **11.06%**, from 113,759 to 126,339)

↓ Change in rank from 31 to 41 in NC

County Sales Tax: **1,310,816 dollars** (5-year change rate = **40.77%**, from 3,215,182 to 4,525,999)

↓ Change in rank from 81 to 83 in NC

Trends in the Housing & Transportation dimension:

Ratio of Average Estimated Home Value to Median Income : **7.54** (5-year change rate = **34.26%**, from 22 to 29.54)

→ No change in rank

Average Available Rent Money less the Average HUD Fair Market Rent: **365.1 dollars** (5-year change rate = **70.13%**, from 520.6 to 885.7)

↑ Change in rank from 46 to 38 in NC

Trends in the Healthcare dimension:

Opioid Deaths per 100,000 Residents: **20.1** (5-year change rate = **151.13%**, from 13.3 to 33.4)

↓ Change in rank from 16 to 39 in NC

Nurses per 10,000 Residents: **3.24** (5-year change rate = **1.75%**, from 184.73 to 187.97)

↑ Change in rank from 47 to 45 in NC

Physicians per 10,000 Residents: **-1.9** (5-year change rate = **-10.96%**, from 17.34 to 15.44)

↓ Change in rank from 33 to 42 in NC

Mental Health Professionals per 10,000 Residents: **2.07** (5-year change rate = **31.08%**, from 6.66 to 8.73)

↑ Change in rank from 34 to 21 in NC

Trends in the Community Cohesion dimension:

Property Crimes per 10,000 Residents: **-2.26** (4-year change rate = **-91.8%**, from 2.47 to 0.2)

↑ Change in rank from 6 to 4 in NC

Nonprofits Organizations per 1,000 Residents: **-0.19** (5-year change rate = **-11.97%**, from 1.62 to 1.42)

↓ Change in rank from 86 to 88 in NC

Trends in the Socioeconomics dimension:

Unemployment Rate (Q4): **-0.4 percent** (5-year change rate = **-9.63%**, from 4.5 to 4.1)

↓ Change in rank from 62 to 71 in NC

Median Household Income: **17,100 dollars** (5-year change rate = **34.76%**, from 49,200 to 66,300)

↑ Change in rank from 62 to 55 in NC

Trends in the Education dimension:

Graduation Percentage: **-7.7 percent** (5-year change rate = **-8.93%**, from 86.2 to 78.5)

↓ Change in rank from 58 to 96 in NC

Dropout Rate: **-3 percent** (5-year change rate = **-100%**, from 3 to 0)

↑ Change in rank from 81 to 1 in NC

Student to Teacher Ratio: **-1** (4-year change rate = **-10.13%**, from 13 to 12)

↑ Change in rank from 18 to 8 in NC

3rd Grade Reading Proficiency: **6.6 percent** (5-year change rate = **13.28%**, from 49.7 to 56.3)

↑ Change in rank from 71 to 12 in NC

Data Advisements:

- This county has a population under 20,000 residents according to the US Census Bureau; in low population areas, some variable estimates can be less stable and more sensitive to changes.
- Availability of Broadband Services is not available for 2022 and was excluded from calculating this county's dimension and resilience score.
- Adoption Rate of Broadband Services is not available for 2022 and was excluded from calculating this county's dimension and resilience score.