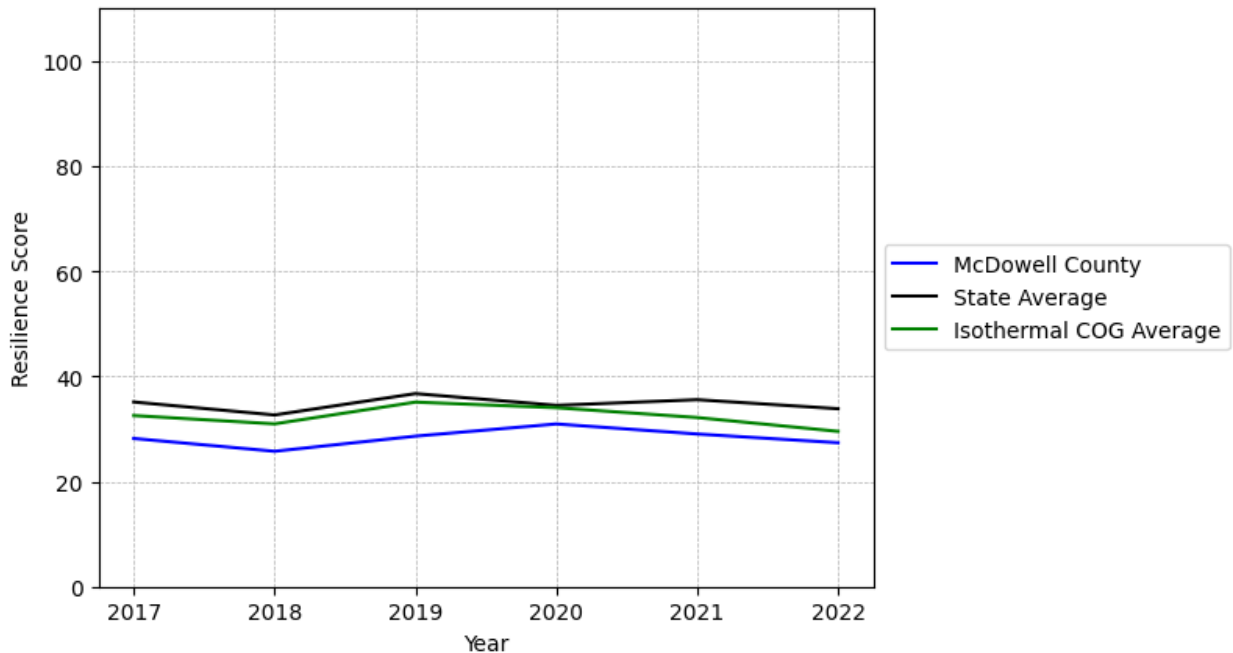


McDowell County Summary

Resilience Score: 27.37

In 2022, McDowell County achieved a Resilience Score of 27.37, which is average as compared to the North Carolina State average.

**McDowell County's Resilience Score Over Time
As Compared to the Region and State Averages**



Note: Resilience Scores are normalized from 1 to 100 with the most resilient county scoring 100. The Resilience Score is determined based on a county's performance relative to NC's other 99 counties.

McDowell County's Resilience Score is comprised of 9 distinct dimensions of resilience. Below are McDowell County's scores for 2022 on those 9 dimensions, and their rank relative to other North Carolina counties.

Business Community Health: 9.49

This component examines the strength and diversity of the local business community, including factors such as the number of businesses, employment levels, and industry diversity. McDowell County's performance on this dimension is average when compared to other North Carolina counties, ranking 61st in the state.

Notable variables for McDowell County within this dimension include:

VARIABLE STRENGTH	FACTOR	MCDOWELL COUNTY VALUE	NC COUNTY AVERAGE VALUE
Strongest	Ratio of Available Child Care Slots to Number of Children under Five	0.68	0.59
2nd Strongest	Private Sector Diversity	0.324	0.28
Weakest	Science, Engineering, & Technology Industries Employment Percentage	0.32%	1.79%

County Government Fiscal Strength: 36.16

This component looks at the financial health of local governments, including their ability to generate revenue, manage debt, and maintain adequate reserves to weather economic downturns. McDowell County's performance on this dimension is average when compared to other North Carolina counties, ranking 62nd in the state.

Notable variables for McDowell County within this dimension include:

VARIABLE STRENGTH	FACTOR	MCDOWELL COUNTY VALUE	NC COUNTY AVERAGE VALUE
Strongest	Debt Service Ratio of County Government	0.03	0.07
2nd Strongest	Capital Assets Condition Ratio of County Government	0.56	0.51
Bottom 10 in NC, Weakest	Solvency Ratio of County Government	23.39	46.7

Communication: 36.77

This component assesses the availability and quality of communication infrastructure, such as broadband internet access, which is crucial for businesses and residents to stay connected and resilient during disruptions. McDowell County's performance on this dimension is fairly weak when compared to other North Carolina counties, ranking 78th in the state.

Notable variables for McDowell County within this dimension include:

VARIABLE STRENGTH	FACTOR	MCDOWELL COUNTY VALUE	NC COUNTY AVERAGE VALUE
Strongest	Local High-Speed Mobile Data Availability	0.63	0.66
2nd Strongest	In-Vehicle High-Speed Mobile Data Availability	0.27	0.37
Weakest	Broadband Availability	0.42	0.6

Housing & Transportation: 58.2

This component evaluates the accessibility and affordability of housing, as well as the availability of reliable transportation options, which are essential for a resilient workforce and economy. McDowell County's performance on this dimension is average when compared to other North Carolina counties, ranking 53rd in the state.

Notable variables for McDowell County within this dimension include:

VARIABLE STRENGTH	FACTOR	MCDOWELL COUNTY VALUE	NC COUNTY AVERAGE VALUE
Strongest	Percentage of Owner-Occupied Homes	62.6%	57.87%
2nd Strongest	Percentage of People with Commute Times Over 45 Minutes	14.19%	16.69%
Weakest	Percentage of Population without Vehicles	6.42%	5.75%

Healthcare: 19.18

The healthcare component examines the availability and quality of healthcare facilities, services, and professionals, which are critical for maintaining a healthy and productive workforce. McDowell County's performance on this dimension is fairly weak when compared to other North Carolina counties, ranking 72nd in the state.

Notable variables for McDowell County within this dimension include:

VARIABLE STRENGTH	FACTOR	MCDOWELL COUNTY VALUE	NC COUNTY AVERAGE VALUE
Strongest	Nurses per 10,000 Residents	175.68	262.64
2nd Strongest	Nursing Home Beds per 1,000 Residents of Age	25.48	27.53

Weakest	65+ Physicians per 10,000 Residents	6.98	16.05
----------------	---	------	-------

Community Cohesion: 55.47

This component looks at the strength of social networks, community engagement, and the ability of residents to work together to address challenges and support one another during times of adversity. McDowell County's performance on this dimension is average when compared to other North Carolina counties, ranking 55th in the state.

Notable variables for McDowell County within this dimension include:

VARIABLE STRENGTH	FACTOR	MCDOWELL COUNTY VALUE	NC COUNTY AVERAGE VALUE
Strongest	Violent Crimes per 10,000 Residents	0.99	3.07
2nd Strongest	Property Crimes per 10,000 Residents	11.83	15.74
Bottom 10 in NC, Weakest	Nonprofits Organizations per 1,000 Residents	0.6	3.17

Socioeconomics: 44.96

This component considers factors such as income levels, poverty rates, and inequality, which can impact a community's ability to withstand and recover from economic shocks. McDowell County's performance on this dimension is average when compared to other North Carolina counties, ranking 52nd in the state.

Notable variables for McDowell County within this dimension include:

VARIABLE STRENGTH	FACTOR	MCDOWELL COUNTY VALUE	NC COUNTY AVERAGE VALUE
Top 10 in NC, Strongest	Percentage of Households Spending more than 30% Income on Housing	16.64%	24.53%
2nd Strongest	Gini Coefficient (Income Inequality)	0.44	0.46
Weakest	Percentage of Population without Health Insurance	12.62%	11.23%

Education: 48.17

This component evaluates the quality of educational institutions and the educational attainment levels of the local population, which play a crucial role in developing a skilled and adaptable workforce. McDowell County's performance on this dimension is average when compared to other North Carolina counties, ranking 49th in the state.

Notable variables for McDowell County within this dimension include:

VARIABLE STRENGTH	FACTOR	MCDOWELL COUNTY VALUE	NC COUNTY AVERAGE VALUE
Strongest	Teacher Attrition Rate	0.08	0.12
2nd Strongest	Student to Teacher Ratio	13	14
Weakest	Dropout Rate	2.48%	1.65%

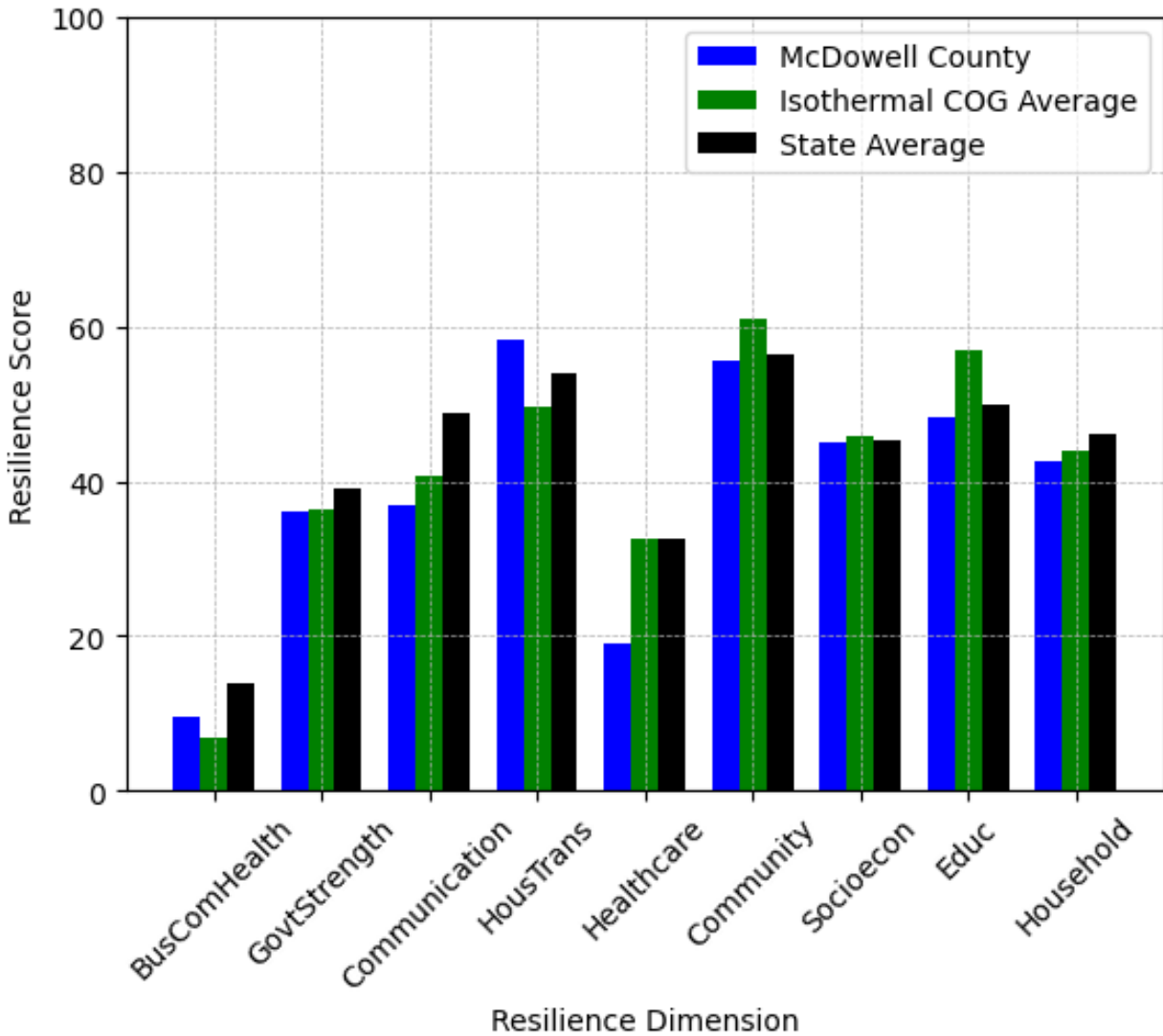
Household Characteristics: 42.65

This component examines factors such as the proportion of single-parent households, age distribution, and the proportion of individuals with disabilities, as these elements can influence a community's resilience and ability to recover from economic disruptions. McDowell County's performance on this dimension is average when compared to other North Carolina counties, ranking 61st in the state.

Notable variables for McDowell County within this dimension include:

VARIABLE STRENGTH	FACTOR	MCDOWELL COUNTY VALUE	NC COUNTY AVERAGE VALUE
Strongest	Percentage of Population 17 and Younger	19.64%	20.37%
2nd Strongest	Percentage of Population with Limited English Proficiency	1.181%	1.454%
Weakest	Percentage of Population with a Disability	19.094%	16.566%

McDowell County's Resilience Dimension Scores Over Time As Compared to the Region and State Averages



Note: Resilience Scores are normalized from 1 to 100 with the most resilient county scoring 100. The Resilience Score is determined based on a county's performance relative to NC's other 99 counties.

Notable Trends in Resilience Indicators, 2017-2022

NOTE: The key trends in the this section are identified based on change rates of at least .15 standard deviations over at least 5 years. Variables are positively oriented such that a positive trend indicates improved performance (e.g., 'improvement' in property crime is a lower crime rate, while 'decline' in property crime indicates a higher crime rate).

Trends in the Business Community Health dimension:

Total Employment Level: **-634** (5-year change rate = **-3.93%**, from 16,147 to 15,513)

↓ Change in rank from 50 to 53 in NC

Average Weekly Wages: **138 dollars** (5-year change rate = **19.17%**, from 720 to 858)

↓ Change in rank from 50 to 79 in NC

Real GDP in Current Dollars: **-178,441 dollars** (5-year change rate = **-10.29%**, from 1,733,698 to 1,555,257)

↓ Change in rank from 53 to 59 in NC

Trends in the County Government Fiscal Strength dimension:

Adjusted Tax Base: **25,263 dollars** (5-year change rate = **31.65%**, from 79,830 to 105,093)

↑ Change in rank from 55 to 50 in NC

County Sales Tax: **4,764,000 dollars** (5-year change rate = **52.96%**, from 8,994,835 to 13,758,835)

↑ Change in rank from 56 to 55 in NC

Trends in the Housing & Transportation dimension:

Ratio of Average Estimated Home Value to Median Income : **2.29** (5-year change rate = **37.22%**, from 6.14 to 8.43)

↓ Change in rank from 49 to 52 in NC

Average Available Rent Money less the Average HUD Fair Market Rent: **245.1 dollars** (5-year change rate = **51.58%**, from 475.2 to 720.3)

↑ Change in rank from 61 to 58 in NC

Trends in the Healthcare dimension:

Opioid Deaths per 100,000 Residents: **10.5** (5-year change rate = **31.63%**, from 33.2 to 43.7)

↑ Change in rank from 77 to 68 in NC

Nurses per 10,000 Residents: **-25.17** (5-year change rate = **-12.53%**, from 200.85 to 175.68)

↓ Change in rank from 45 to 49 in NC

Physicians per 10,000 Residents: **-1.98** (5-year change rate = **-22.1%**, from 8.96 to 6.98)

↓ Change in rank from 67 to 82 in NC

Mental Health Professionals per 10,000 Residents: **1.61** (5-year change rate = **55.52%**, from 2.9 to 4.51)

↑ Change in rank from 85 to 65 in NC

Trends in the Community Cohesion dimension:

Property Crimes per 10,000 Residents: **-5.99** (4-year change rate = **-33.62%**, from 17.82 to 11.83)

↑ Change in rank from 47 to 31 in NC

Nonprofits Organizations per 1,000 Residents: **-1.78** (5-year change rate = **-74.65%**, from 2.38 to 0.6)

↓ Change in rank from 67 to 99 in NC

Trends in the Socioeconomics dimension:

Unemployment Rate (Q4): **-0.2 percent** (5-year change rate = **-5.45%**, from 3.7 to 3.5)

↓ Change in rank from 11 to 41 in NC

Median Household Income: **13,900 dollars** (5-year change rate = **29.96%**, from 46,400 to 60,300)

↑ Change in rank from 76 to 67 in NC

Trends in the Education dimension:

Graduation Percentage: **4.4 percent** (5-year change rate = **5.34%**, from 82.4 to 86.8)

↑ Change in rank from 88 to 69 in NC

Dropout Rate: **-0.23 percent** (5-year change rate = **-8.61%**, from 2.71 to 2.48)

↓ Change in rank from 67 to 84 in NC

3rd Grade Reading Proficiency: **-10.4 percent** (5-year change rate = **-17.93%**, from 58 to 47.6)

↑ Change in rank from 34 to 33 in NC

Data Advisements:

- Availability of Broadband Services is not available for 2022 and was excluded from calculating this county's dimension and resilience score.
- Adoption Rate of Broadband Services is not available for 2022 and was excluded from calculating this county's dimension and resilience score.