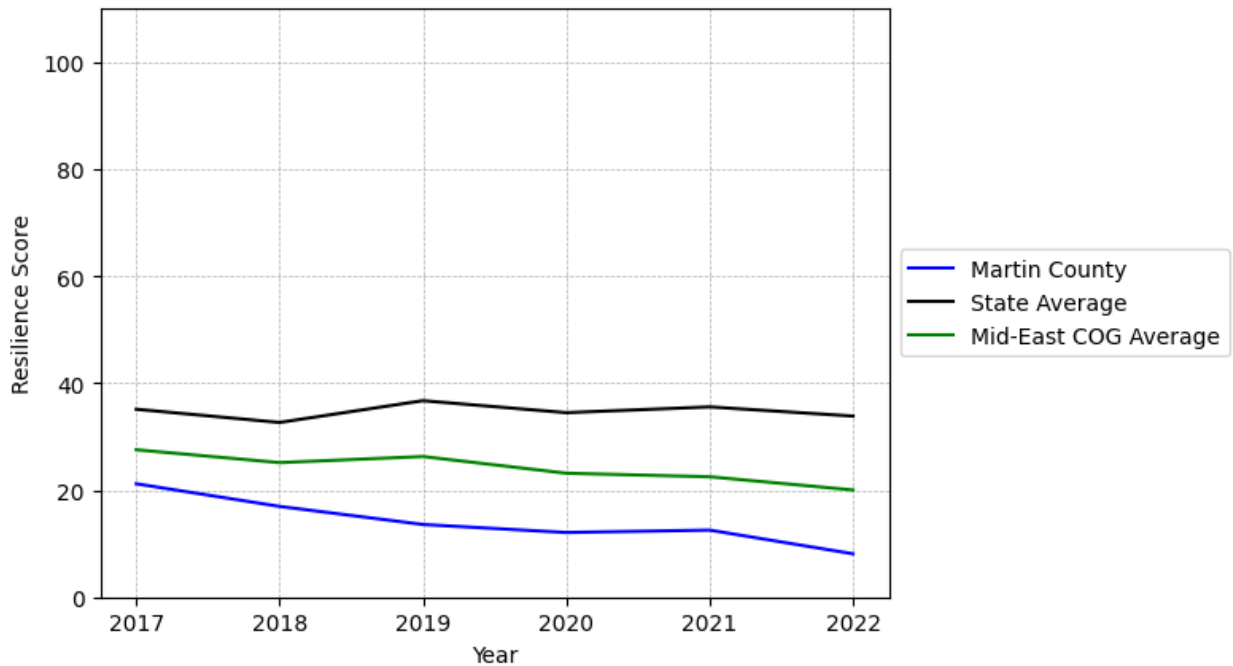


Martin County Summary

Resilience Score: 8.1

In 2022, Martin County achieved a Resilience Score of 8.1, which is weak as compared to the North Carolina State average.

**Martin County's Resilience Score Over Time
As Compared to the Region and State Averages**



Note: Resilience Scores are normalized from 1 to 100 with the most resilient county scoring 100. The Resilience Score is determined based on a county's performance relative to NC's other 99 counties.

Martin County's Resilience Score is comprised of 9 distinct dimensions of resilience. Below are Martin County's scores for 2022 on those 9 dimensions, and their rank relative to other North Carolina counties.

Business Community Health: 11.22

This component examines the strength and diversity of the local business community, including factors such as the number of businesses, employment levels, and industry diversity. Martin County's performance on this dimension is average when compared to other North Carolina counties, ranking 50th in the state.

Notable variables for Martin County within this dimension include:

| VARIABLE STRENGTH | FACTOR | MARTIN COUNTY VALUE | NC COUNTY AVERAGE VALUE |
|---------------------------------|--|----------------------------|--------------------------------|
| Top 10 in NC, Strongest | Ratio of Available Child Care Slots to Number of Children under Five | 0.92 | 0.59 |
| 2nd Strongest | Private Sector Diversity | 0.427 | 0.28 |
| Bottom 10 in NC, Weakest | Average Weekly Wages | \$724 | \$951 |

County Government Fiscal Strength: 45.61

This component looks at the financial health of local governments, including their ability to generate revenue, manage debt, and maintain adequate reserves to weather economic downturns. Martin County's performance on this dimension is average when compared to other North Carolina counties, ranking 45th in the state.

Notable variables for Martin County within this dimension include:

| VARIABLE STRENGTH | FACTOR | MARTIN COUNTY VALUE | NC COUNTY AVERAGE VALUE |
|------------------------------------|-------------------------------------|----------------------------|--------------------------------|
| Top 10 in NC, Strongest | Quick Ratio of County Government | 27.5 | 16.4 |
| Top 10 in NC, 2nd Strongest | Solvency Ratio of County Government | 71.27 | 46.7 |
| Weakest | County Sales Tax | \$6,325,515 | \$31,151,902 |

Communication: 27.89

This component assesses the availability and quality of communication infrastructure, such as broadband internet access, which is crucial for businesses and residents to stay connected and resilient during disruptions. Martin County's performance on this dimension is weak when compared to other North Carolina counties, ranking 91st in the state.

Notable variables for Martin County within this dimension include:

| VARIABLE STRENGTH | FACTOR | MARTIN COUNTY VALUE | NC COUNTY AVERAGE VALUE |
|---------------------------------|--|---------------------|-------------------------|
| Strongest | Local High-Speed Mobile Data Availability | 0.52 | 0.66 |
| 2nd Strongest | In-Vehicle High-Speed Mobile Data Availability | 0.23 | 0.37 |
| Bottom 10 in NC, Weakest | Broadband Availability | 0.35 | 0.6 |

Housing & Transportation: 36.09

This component evaluates the accessibility and affordability of housing, as well as the availability of reliable transportation options, which are essential for a resilient workforce and economy. Martin County's performance on this dimension is weak when compared to other North Carolina counties, ranking 89th in the state.

Notable variables for Martin County within this dimension include:

| VARIABLE STRENGTH | FACTOR | MARTIN COUNTY VALUE | NC COUNTY AVERAGE VALUE |
|---------------------------------|--|---------------------|-------------------------|
| Strongest | Percentage of People Driving Alone to Work | 84.99% | 86.36% |
| 2nd Strongest | Percentage of Households with More Residents than Rooms | 1.93% | 2.1% |
| Bottom 10 in NC | Average Available Rent Money less the Average HUD Fair Market Rent | \$496.9 | \$799.87 |
| Bottom 10 in NC | Percentage of Population without Vehicles | 9.29% | 5.75% |
| Bottom 10 in NC, Weakest | Percentage of Homes Built Before 1980 | 56.99% | 40.9% |

Healthcare: 17.43

The healthcare component examines the availability and quality of healthcare facilities, services, and professionals, which are critical for maintaining a healthy and productive workforce. Martin County's performance on this dimension is fairly weak when compared to other North Carolina counties, ranking 82nd in the state.

Notable variables for Martin County within this dimension include:

| VARIABLE STRENGTH | FACTOR | MARTIN COUNTY VALUE | NC COUNTY AVERAGE VALUE |
|-------------------|--------|---------------------|-------------------------|
|-------------------|--------|---------------------|-------------------------|

| | | | |
|----------------------|--|-------|-------|
| Strongest | Nursing Home Beds per 1,000 Residents of Age 65+ | 27.57 | 27.53 |
| 2nd Strongest | Opioid Deaths per 100,000 Residents | 44.6 | 38.73 |
| Weakest | Mental Health Professionals per 10,000 Residents | 3.26 | 6.6 |

Community Cohesion: 35.3

This component looks at the strength of social networks, community engagement, and the ability of residents to work together to address challenges and support one another during times of adversity. Martin County's performance on this dimension is weak when compared to other North Carolina counties, ranking 89th in the state.

Notable variables for Martin County within this dimension include:

| VARIABLE STRENGTH | FACTOR | MARTIN COUNTY VALUE | NC COUNTY AVERAGE VALUE |
|---------------------------------|--|---------------------|-------------------------|
| Top 10 in NC, Strongest | Nonprofits Organizations per 1,000 Residents | 5.11 | 3.17 |
| 2nd Strongest | Percentage of Inactive Voters | 10.25% | 11.3% |
| Bottom 10 in NC | Yearly Population Change Percentage | -0.818% | 0.906% |
| Bottom 10 in NC, Weakest | Property Crimes per 10,000 Residents | 46.09 | 15.74 |

Socioeconomics: 29.85

This component considers factors such as income levels, poverty rates, and inequality, which can impact a community's ability to withstand and recover from economic shocks. Martin County's performance on this dimension is fairly weak when compared to other North Carolina counties, ranking 77th in the state.

Notable variables for Martin County within this dimension include:

| VARIABLE STRENGTH | FACTOR | MARTIN COUNTY VALUE | NC COUNTY AVERAGE VALUE |
|--------------------------------|---|---------------------|-------------------------|
| Top 10 in NC, Strongest | Percentage of Population without Health Insurance | 8.17% | 11.23% |
| 2nd Strongest | Gini Coefficient (Income Inequality) | 0.44 | 0.46 |

| | | | |
|---------------------------------|--|--------|----------|
| Bottom 10 in NC | Percentage of Population without a High School Diploma | 13.13% | 9.05% |
| Bottom 10 in NC | Median Household Income | \$52,5 | \$70,088 |
| Bottom 10 in NC, Weakest | Percentage of Households with Income over \$200k | 1.88% | 5.28% |

Education: 20.46

This component evaluates the quality of educational institutions and the educational attainment levels of the local population, which play a crucial role in developing a skilled and adaptable workforce. Martin County's performance on this dimension is weak when compared to other North Carolina counties, ranking 94th in the state.

Notable variables for Martin County within this dimension include:

| VARIABLE STRENGTH | FACTOR | MARTIN COUNTY VALUE | NC COUNTY AVERAGE VALUE |
|--|-------------------------------------|---------------------|-------------------------|
| Top 10 in NC, Strongest 2nd Strongest | Dropout Rate | 0.26% | 1.65% |
| | Student to Teacher Ratio | 15 | 14 |
| Bottom 10 in NC | Postsecondary Enrollment Percentage | 14.41% | 25.48% |
| Bottom 10 in NC | 3rd Grade Reading Proficiency | 25.9% | 43.1% |
| Bottom 10 in NC, Weakest | Graduation Percentage | 74.8% | 88.03% |

Household Characteristics: 25.01

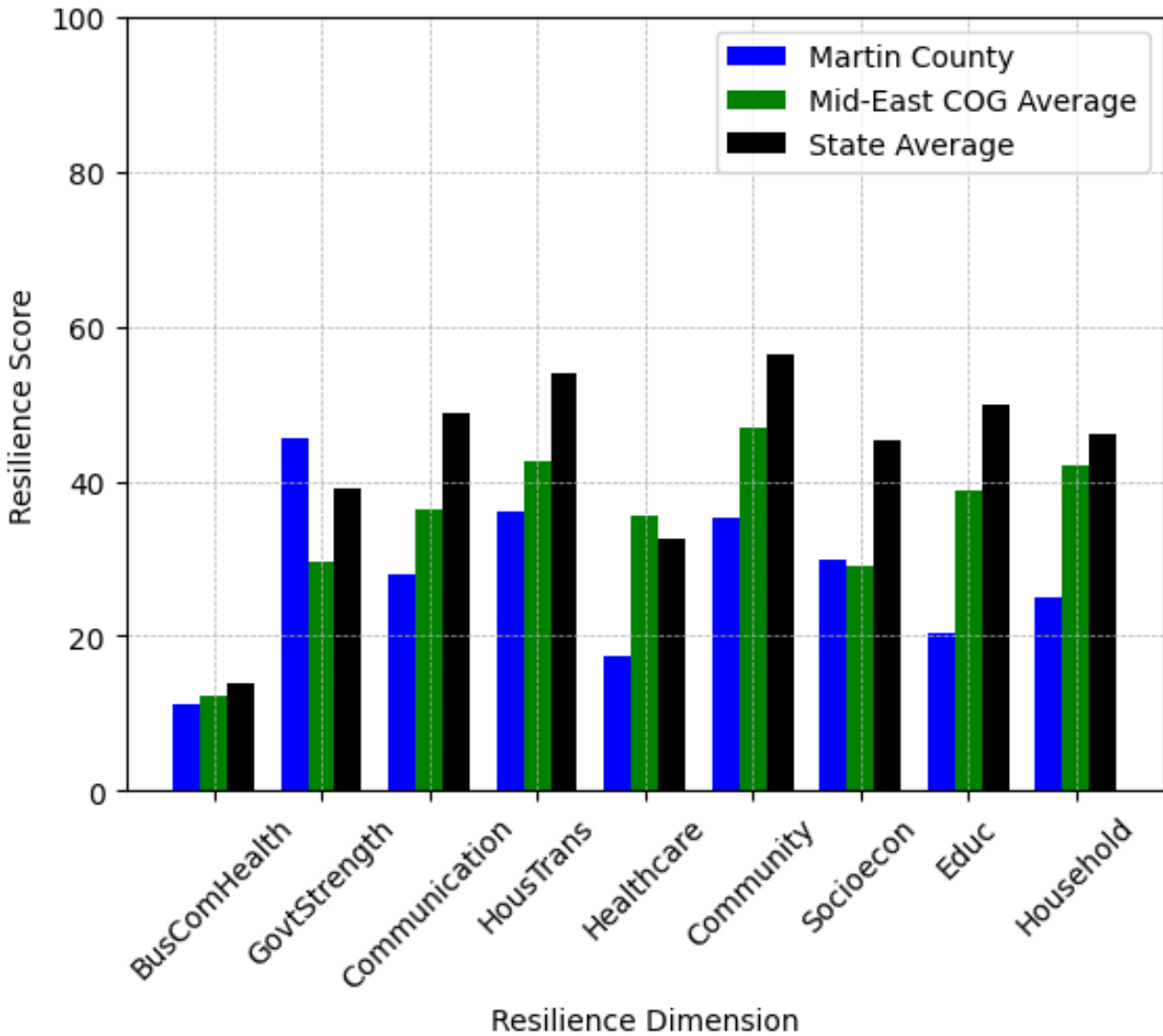
This component examines factors such as the proportion of single-parent households, age distribution, and the proportion of individuals with disabilities, as these elements can influence a community's resilience and ability to recover from economic disruptions. Martin County's performance on this dimension is weak when compared to other North Carolina counties, ranking 89th in the state.

Notable variables for Martin County within this dimension include:

| VARIABLE STRENGTH | FACTOR | MARTIN COUNTY VALUE | NC COUNTY AVERAGE VALUE |
|----------------------|---|---------------------|-------------------------|
| Strongest | Percentage of Population with Limited English Proficiency | 1.041% | 1.454% |
| 2nd Strongest | Percentage of Population | 20.28% | 20.37% |

| | | | |
|-------------------------------------|---|---------|---------|
| Bottom 10 in NC, Weakest | 17 and Younger Percentage of Population with a Disability | 20.936% | 16.566% |
|-------------------------------------|---|---------|---------|

Martin County's Resilience Dimension Scores Over Time As Compared to the Region and State Averages



Note: Resilience Scores are normalized from 1 to 100 with the most resilient county scoring 100. The Resilience Score is determined based on a county's performance relative to NC's other 99 counties.

Notable Trends in Resilience Indicators, 2017-2022

NOTE: The key trends in the this section are identified based on change rates of at least .15 standard deviations over at least 5 years. Variables are positively oriented such that a positive trend indicates improved performance (e.g., 'improvement' in property crime is a lower crime rate, while 'decline' in property crime indicates a higher crime rate).

Trends in the Business Community Health dimension:

Total Employment Level: **-726** (5-year change rate = **-10.44%**, from 6,956 to 6,230)

↓ Change in rank from 77 to 79 in NC

Average Weekly Wages: **102 dollars** (5-year change rate = **16.4%**, from 622 to 724)

↓ Change in rank from 96 to 99 in NC

Real GDP in Current Dollars: **-91,000 dollars** (5-year change rate = **-12.61%**, from 721,382 to 630,382)

↓ Change in rank from 78 to 79 in NC

Trends in the County Government Fiscal Strength dimension:

Adjusted Tax Base: **10,716 dollars** (5-year change rate = **13.8%**, from 77,649 to 88,365)

↓ Change in rank from 63 to 72 in NC

County Sales Tax: **1,647,274 dollars** (5-year change rate = **35.21%**, from 4,678,242 to 6,325,515)

→ No change in rank

Trends in the Housing & Transportation dimension:

Ratio of Average Estimated Home Value to Median Income : **2** (5-year change rate = **23.11%**, from 8.63 to 10.63)

↑ Change in rank from 62 to 60 in NC

Average Available Rent Money less the Average HUD Fair Market Rent: **-76.7 dollars** (5-year change rate = **-13.37%**, from 573.6 to 496.9)

↓ Change in rank from 39 to 91 in NC

Trends in the Healthcare dimension:

Opioid Deaths per 100,000 Residents: **18.3** (5-year change rate = **69.58%**, from 26.3 to 44.6)

↓ Change in rank from 54 to 70 in NC

Nurses per 10,000 Residents: **-6.51** (5-year change rate = **-6.82%**, from 95.43 to 88.92)

↓ Change in rank from 78 to 79 in NC

Physicians per 10,000 Residents: **-2.61** (5-year change rate = **-24.79%**, from 10.53 to 7.92)

↓ Change in rank from 55 to 70 in NC

Mental Health Professionals per 10,000 Residents: **-0.69** (5-year change rate = **-17.47%**, from 3.95 to 3.26)

↓ Change in rank from 73 to 84 in NC

Trends in the Community Cohesion dimension:

Violent Crimes per 10,000 Residents: **1.52** (4-year change rate = **58.57%**, from 2.6 to 4.13)

↓ Change in rank from 64 to 76 in NC

Property Crimes per 10,000 Residents: **-10.41** (4-year change rate = **-18.42%**, from 56.5 to 46.09)

↓ Change in rank from 96 to 97 in NC

Nonprofits Organizations per 1,000 Residents: **0.81** (5-year change rate = **18.8%**, from 4.3 to 5.11)

↑ Change in rank from 18 to 8 in NC

Trends in the Socioeconomics dimension:

Unemployment Rate (Q4): **-0.9 percent** (5-year change rate = **-16.99%**, from 5.1 to 4.2)

↓ Change in rank from 75 to 77 in NC

Median Household Income: **2,100 dollars** (5-year change rate = **4.17%**, from 50,400 to 52,500)

↓ Change in rank from 58 to 93 in NC

Trends in the Education dimension:

Graduation Percentage: **-3.6 percent** (5-year change rate = **-4.59%**, from 78.4 to 74.8)

↓ Change in rank from 97 to 99 in NC

Dropout Rate: **-5.02 percent** (5-year change rate = **-95.04%**, from 5.28 to 0.26)

↑ Change in rank from 100 to 7 in NC

Student to Teacher Ratio: **2** (4-year change rate = **15.06%**, from 13 to 15)

↓ Change in rank from 12 to 66 in NC

3rd Grade Reading Proficiency: **-10.8 percent** (5-year change rate = **-29.43%**, from 36.7 to 25.9)

→ No change in rank

Data Advisements:

- Availability of Broadband Services is not available for 2022 and was excluded from calculating this county's dimension and resilience score.
- Adoption Rate of Broadband Services is not available for 2022 and was excluded from calculating this county's dimension and resilience score.