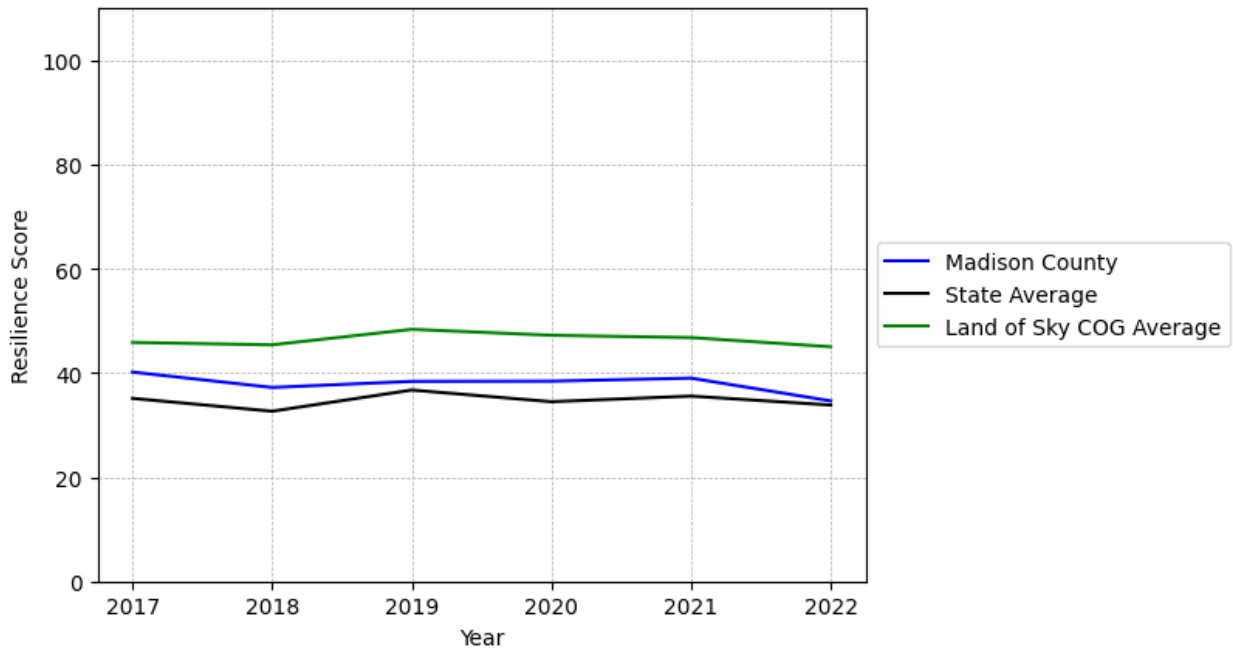


Madison County Summary

Resilience Score: 34.63

In 2022, Madison County achieved a Resilience Score of 34.63, which is average as compared to the North Carolina State average.

**Madison County's Resilience Score Over Time
As Compared to the Region and State Averages**



Note: Resilience Scores are normalized from 1 to 100 with the most resilient county scoring 100. The Resilience Score is determined based on a county's performance relative to NC's other 99 counties.

Madison County's Resilience Score is comprised of 9 distinct dimensions of resilience. Below are Madison County's scores for 2022 on those 9 dimensions, and their rank relative to other North Carolina counties.

Business Community Health: 3.64

This component examines the strength and diversity of the local business community, including factors such as the number of businesses, employment levels, and industry diversity. Madison County's performance on this dimension is fairly weak when compared to other North Carolina counties, ranking 96th in the state.

Notable variables for Madison County within this dimension include:

VARIABLE STRENGTH	FACTOR	MADISON COUNTY VALUE	NC COUNTY AVERAGE VALUE
Strongest	Private Sector Diversity	0.395	0.28
2nd Strongest	Percentage of Companies in Science, Engineering, & Technology Industries	5.6%	6.13%
Bottom 10 in NC, Weakest	Ratio of Available Child Care Slots to Number of Children under Five	0.28	0.59

County Government Fiscal Strength: 37.47

This component looks at the financial health of local governments, including their ability to generate revenue, manage debt, and maintain adequate reserves to weather economic downturns. Madison County's performance on this dimension is average when compared to other North Carolina counties, ranking 59th in the state.

Notable variables for Madison County within this dimension include:

VARIABLE STRENGTH	FACTOR	MADISON COUNTY VALUE	NC COUNTY AVERAGE VALUE
Strongest	Debt Service Ratio of County Government	0.04	0.07
2nd Strongest	Operations Ratio of County Government	1.15	1.11
Weakest	Quick Ratio of County Government	7.21	16.4

Communication: 47.23

This component assesses the availability and quality of communication infrastructure, such as broadband internet access, which is crucial for businesses and residents to stay connected and resilient during disruptions. Madison County's performance on this dimension is average when compared to other North Carolina counties, ranking 56th in the state.

Notable variables for Madison County within this dimension include:

VARIABLE STRENGTH	FACTOR	MADISON COUNTY VALUE	NC COUNTY AVERAGE VALUE
Top 10 in NC, Strongest	Broadband Availability	0.87	0.6
2nd Strongest	In-Vehicle High-Speed Mobile Data Availability	0.25	0.37
Weakest	Local High-Speed Mobile Data Availability	0.48	0.66

Housing & Transportation: 31.01

This component evaluates the accessibility and affordability of housing, as well as the availability of reliable transportation options, which are essential for a resilient workforce and economy. Madison County's performance on this dimension is weak when compared to other North Carolina counties, ranking 95th in the state.

Notable variables for Madison County within this dimension include:

VARIABLE STRENGTH	FACTOR	MADISON COUNTY VALUE	NC COUNTY AVERAGE VALUE
Strongest	Percentage of Population without Vehicles	4.46%	5.75%
2nd Strongest	Percentage of Homes Built Before 1980	40.75%	40.9%
Bottom 10 in NC	Percentage of People with Commute Times Over 45 Minutes	25.75%	16.69%
Bottom 10 in NC, Weakest	Average Available Rent Money less the Average HUD Fair Market Rent	\$397.4	\$799.87

Healthcare: 25.36

The healthcare component examines the availability and quality of healthcare facilities, services, and professionals, which are critical for maintaining a healthy and productive workforce. Madison County's performance on this dimension is average when compared to other North Carolina counties, ranking 52nd in the state.

Notable variables for Madison County within this dimension include:

VARIABLE STRENGTH	FACTOR	MADISON COUNTY VALUE	NC COUNTY AVERAGE VALUE
Strongest	Nursing Home Beds per	33.99	27.53

	1,000 Residents of Age 65+		
2nd Strongest	Mental Health Professionals per 10,000 Residents	7.9	6.6
Weakest	Nurses per 10,000 Residents	77.43	262.64

Community Cohesion: 42.09

This component looks at the strength of social networks, community engagement, and the ability of residents to work together to address challenges and support one another during times of adversity. Madison County's performance on this dimension is fairly weak when compared to other North Carolina counties, ranking 82nd in the state.

Notable variables for Madison County within this dimension include:

VARIABLE STRENGTH	FACTOR	MADISON COUNTY VALUE	NC COUNTY AVERAGE VALUE
Strongest	Yearly Population Change Percentage	0.955%	0.906%
2nd Strongest	Nonprofits Organizations per 1,000 Residents	2.28	3.17
Weakest	Violent Crimes per 10,000 Residents	5.95	3.07

Socioeconomics: 59.13

This component considers factors such as income levels, poverty rates, and inequality, which can impact a community's ability to withstand and recover from economic shocks. Madison County's performance on this dimension is fairly strong when compared to other North Carolina counties, ranking 25th in the state.

Notable variables for Madison County within this dimension include:

VARIABLE STRENGTH	FACTOR	MADISON COUNTY VALUE	NC COUNTY AVERAGE VALUE
Strongest	Percentage of Population without Health Insurance	9.02%	11.23%
2nd Strongest	Population 25+ with at least a Bachelor's Degree	32.22%	24.4%
Weakest	Gini Coefficient (Income Inequality)	0.48	0.46

Education: 67.45

This component evaluates the quality of educational institutions and the educational attainment levels of the local population, which play a crucial role in developing a skilled and adaptable workforce. Madison County's performance on this dimension is strong when compared to other North Carolina counties, ranking 11th in the state.

Notable variables for Madison County within this dimension include:

VARIABLE STRENGTH	FACTOR	MADISON COUNTY VALUE	NC COUNTY AVERAGE VALUE
Top 10 in NC, Strongest	3rd Grade Reading Proficiency	58.4%	43.1%
2nd Strongest	Student to Teacher Ratio	12	14
Weakest	Teacher Attrition Rate	0.11	0.12

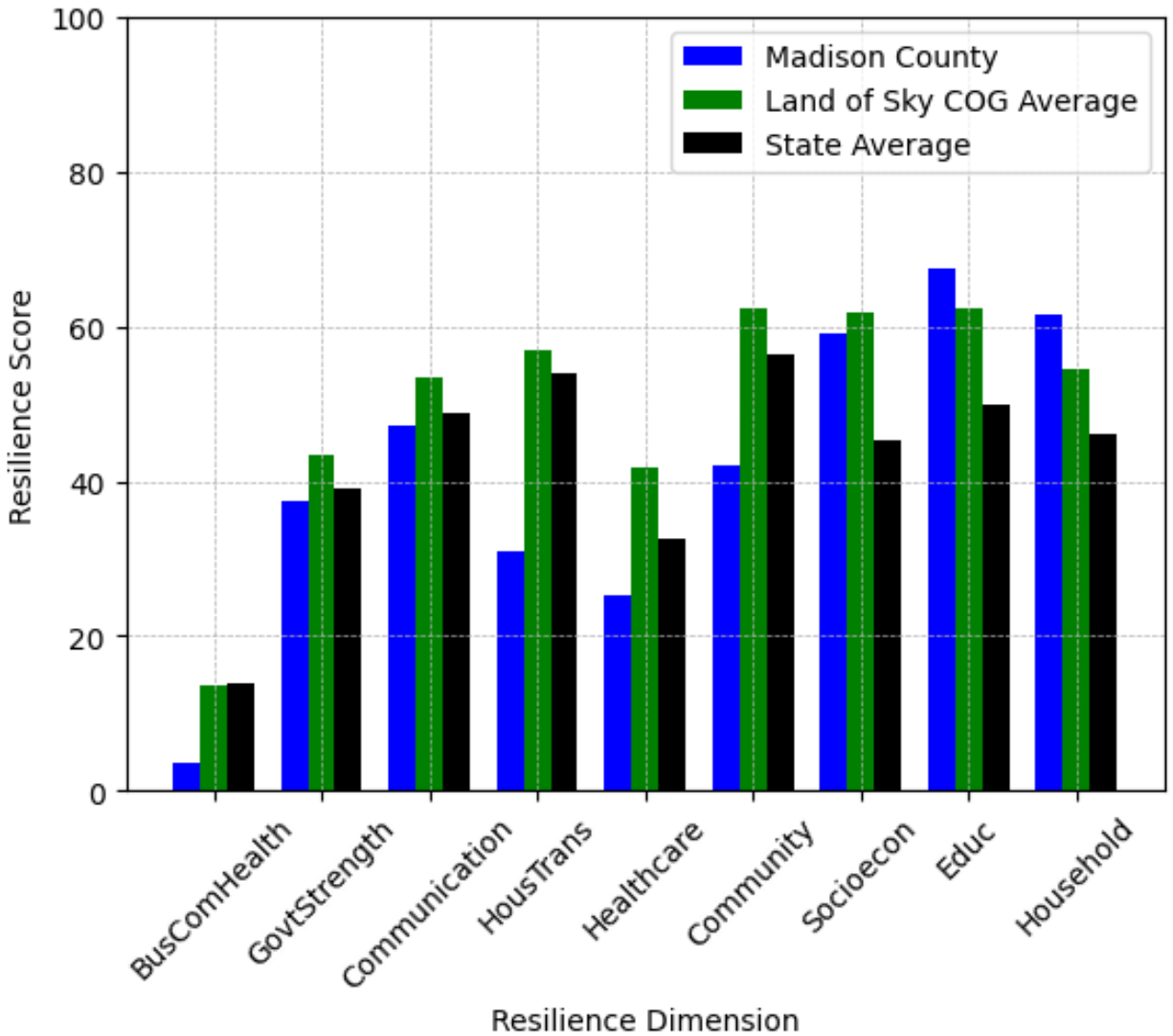
Household Characteristics: 61.43

This component examines factors such as the proportion of single-parent households, age distribution, and the proportion of individuals with disabilities, as these elements can influence a community's resilience and ability to recover from economic disruptions. Madison County's performance on this dimension is strong when compared to other North Carolina counties, ranking 11th in the state.

Notable variables for Madison County within this dimension include:

VARIABLE STRENGTH	FACTOR	MADISON COUNTY VALUE	NC COUNTY AVERAGE VALUE
Top 10 in NC, Strongest	Percentage of Population with Limited English Proficiency	0.037%	1.454%
Top 10 in NC, 2nd Strongest	Percentage of Single Parent Households	23.191%	36.132%
Weakest	Percentage of Population with a Disability	18.514%	16.566%

Madison County's Resilience Dimension Scores Over Time As Compared to the Region and State Averages



Note: Resilience Scores are normalized from 1 to 100 with the most resilient county scoring 100. The Resilience Score is determined based on a county's performance relative to NC's other 99 counties.

Notable Trends in Resilience Indicators, 2017-2022

NOTE: The key trends in the this section are identified based on change rates of at least .15 standard deviations over at least 5 years. Variables are positively oriented such that a positive trend indicates improved performance (e.g., 'improvement' in property crime is a lower crime rate, while 'decline' in property crime indicates a higher crime rate).

Trends in the Business Community Health dimension:

Total Employment Level: **182** (5-year change rate = **4.81%**, from 3,784 to 3,966)

↓ Change in rank from 86 to 87 in NC

Average Weekly Wages: **166 dollars** (5-year change rate = **23.85%**, from 696 to 862)

↓ Change in rank from 62 to 77 in NC

Real GDP in Current Dollars: **34,944 dollars** (5-year change rate = **8.9%**, from 392,792 to 427,736)

↑ Change in rank from 86 to 85 in NC

Ratio of Available Child Care Slots to Number of Children under Five: **-0.28** (5-year change rate = **-50.04%**, from 0.56 to 0.28)

↓ Change in rank from 68 to 96 in NC

Trends in the County Government Fiscal Strength dimension:

Adjusted Tax Base: **23,084 dollars** (5-year change rate = **22.11%**, from 104,418 to 127,502)

↑ Change in rank from 40 to 37 in NC

County Sales Tax: **2,596,320 dollars** (5-year change rate = **85.6%**, from 3,033,080 to 5,629,400)

↑ Change in rank from 83 to 78 in NC

Trends in the Housing & Transportation dimension:

Ratio of Average Estimated Home Value to Median Income : **7.34** (5-year change rate = **35.58%**, from 20.63 to 27.97)

→ No change in rank

Average Available Rent Money less the Average HUD Fair Market Rent: **-123.1 dollars** (5-year change rate = **-23.65%**, from 520.5 to 397.4)

↓ Change in rank from 49 to 99 in NC

Trends in the Healthcare dimension:

Opioid Deaths per 100,000 Residents: **32.2** (5-year change rate = **233.33%**, from 13.8 to 46)

↓ Change in rank from 17 to 73 in NC

Nurses per 10,000 Residents: **3.68** (5-year change rate = **4.99%**, from 73.75 to 77.43)

↑ Change in rank from 86 to 85 in NC

Mental Health Professionals per 10,000 Residents: **0.86** (5-year change rate = **12.22%**, from 7.04 to 7.9)

↓ Change in rank from 26 to 28 in NC

Trends in the Community Cohesion dimension:

Violent Crimes per 10,000 Residents: **0.45** (4-year change rate = **8.21%**, from 5.5 to 5.95)

↑ Change in rank from 88 to 85 in NC

Property Crimes per 10,000 Residents: **-12.37** (4-year change rate = **-39.35%**, from 31.44 to 19.07)

↑ Change in rank from 85 to 70 in NC

Nonprofits Organizations per 1,000 Residents: **-0.92** (5-year change rate = **-28.68%**, from 3.2 to 2.28)

↓ Change in rank from 33 to 68 in NC

Trends in the Socioeconomics dimension:

Unemployment Rate (Q4): **-0.4 percent** (5-year change rate = **-11.5%**, from 3.8 to 3.3)

↓ Change in rank from 16 to 28 in NC

Median Household Income: **18,700 dollars** (5-year change rate = **30.51%**, from 61,300 to 80,000)

↓ Change in rank from 21 to 23 in NC

Trends in the Education dimension:

Graduation Percentage: **6.6 percent** (5-year change rate = **7.68%**, from 85.9 to 92.5)

↑ Change in rank from 61 to 13 in NC

Dropout Rate: **-2.17 percent** (5-year change rate = **-78.74%**, from 2.75 to 0.58)

↑ Change in rank from 69 to 14 in NC

Student to Teacher Ratio: **-1** (4-year change rate = **-5.33%**, from 13 to 12)

→ No change in rank

3rd Grade Reading Proficiency: **-7.2 percent** (5-year change rate = **-10.98%**, from 65.6 to 58.4)

↑ Change in rank from 6 to 4 in NC

Data Advisements:

- Availability of Broadband Services is not available for 2022 and was excluded from calculating this county's dimension and resilience score.
- Adoption Rate of Broadband Services is not available for 2022 and was excluded from calculating this county's dimension and resilience score.