

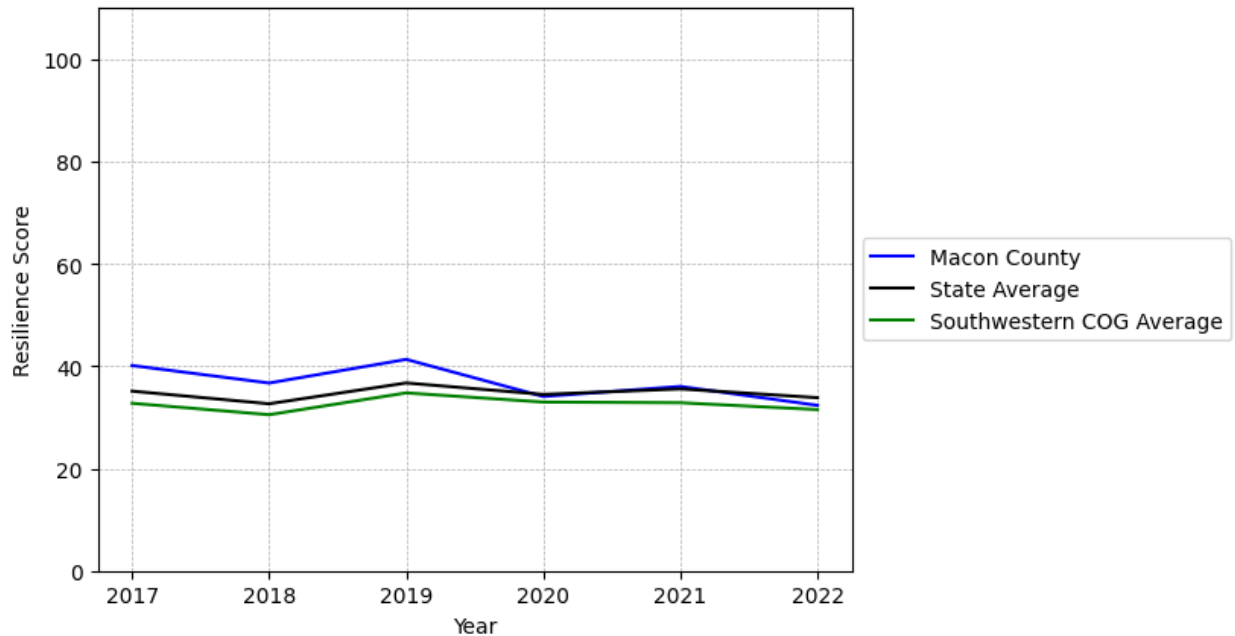
# Macon County Summary

---

**Resilience Score: 32.34**

In 2022, Macon County achieved a Resilience Score of 32.34, which is average as compared to the North Carolina State average.

**Macon County's Resilience Score Over Time  
As Compared to the Region and State Averages**



*Note: Resilience Scores are normalized from 1 to 100 with the most resilient county scoring 100. The Resilience Score is determined based on a county's performance relative to NC's other 99 counties.*

Macon County's Resilience Score is comprised of 9 distinct dimensions of resilience. Below are Macon County's scores for 2022 on those 9 dimensions, and their rank relative to other North Carolina counties.

### **Business Community Health: 15.24**

This component examines the strength and diversity of the local business community, including factors such as the number of businesses, employment levels, and industry diversity. Macon County's performance on this dimension is average when compared to other North Carolina counties, ranking 27th in the state.

Notable variables for Macon County within this dimension include:

<b>VARIABLE STRENGTH</b>	<b>FACTOR</b>	<b>MACON COUNTY VALUE</b>	<b>NC COUNTY AVERAGE VALUE</b>
<b>Top 10 in NC, Strongest</b>	Ratio of Available Child Care Slots to Number of Children under Five	1	0.59
<b>2nd Strongest</b>	Percentage of Companies in Science, Engineering, & Technology Industries	5.42%	6.13%
<b>Weakest</b>	Average Weekly Wages	\$87	\$951

---

### **County Government Fiscal Strength: 53.34**

This component looks at the financial health of local governments, including their ability to generate revenue, manage debt, and maintain adequate reserves to weather economic downturns. Macon County's performance on this dimension is average when compared to other North Carolina counties, ranking 29th in the state.

Notable variables for Macon County within this dimension include:

<b>VARIABLE STRENGTH</b>	<b>FACTOR</b>	<b>MACON COUNTY VALUE</b>	<b>NC COUNTY AVERAGE VALUE</b>
<b>Top 10 in NC, Strongest</b>	Solvency Ratio of County Government	74.35	46.7
<b>Top 10 in NC, 2nd Strongest</b>	Adjusted Tax Base	\$218,595	\$124,092
<b>Bottom 10 in NC, Weakest</b>	Capital Assets Condition Ratio of County Government	0.24	0.51

---

### **Communication: 21.17**

This component assesses the availability and quality of communication infrastructure, such as broadband internet access, which is crucial for businesses and residents to stay connected and resilient during disruptions. Macon County's performance on this dimension is weak when compared to other North Carolina counties, ranking 95th in the state.

Notable variables for Macon County within this dimension include:

VARIABLE STRENGTH	FACTOR	MACON COUNTY VALUE	NC COUNTY AVERAGE VALUE
<b>Strongest</b>	Percentage of Population without Smartphones	21.34%	17.22%
<b>2nd Strongest</b>	Broadband Availability	0.41	0.6
<b>Bottom 10 in NC</b>	Local High-Speed Mobile Data Availability	0.3	0.66
<b>Bottom 10 in NC, Weakest</b>	In-Vehicle High-Speed Mobile Data Availability	0.11	0.37

### Housing & Transportation: 52.4

This component evaluates the accessibility and affordability of housing, as well as the availability of reliable transportation options, which are essential for a resilient workforce and economy. Macon County's performance on this dimension is average when compared to other North Carolina counties, ranking 62nd in the state.

Notable variables for Macon County within this dimension include:

VARIABLE STRENGTH	FACTOR	MACON COUNTY VALUE	NC COUNTY AVERAGE VALUE
<b>Strongest</b>	Percentage of Households with More Residents than Rooms	1.31%	2.1%
<b>2nd Strongest</b>	Percentage of Homes Built Before 1980	38.62%	40.9%
<b>Bottom 10 in NC, Weakest</b>	Percentage of Owner-Occupied Homes	47.66%	57.87%

### Healthcare: 22.33

The healthcare component examines the availability and quality of healthcare facilities, services, and professionals, which are critical for maintaining a healthy and productive workforce. Macon County's performance on this dimension is average when compared to other North Carolina counties, ranking 66th in the state.

Notable variables for Macon County within this dimension include:

VARIABLE STRENGTH	FACTOR	MACON COUNTY VALUE	NC COUNTY AVERAGE VALUE
<b>Strongest</b>	Physicians per 10,000 Residents	17	16.05

<b>2nd Strongest</b>	Mental Health Professionals per 10,000 Residents	5.04	6.6
<b>Weakest</b>	Nurses per 10,000 Residents	88.74	262.64

### Community Cohesion: 79.62

This component looks at the strength of social networks, community engagement, and the ability of residents to work together to address challenges and support one another during times of adversity. Macon County's performance on this dimension is strong when compared to other North Carolina counties, ranking 7th in the state.

Notable variables for Macon County within this dimension include:

VARIABLE STRENGTH	FACTOR	MACON COUNTY VALUE	NC COUNTY AVERAGE VALUE
<b>Top 10 in NC, Strongest</b>	Violent Crimes per 10,000 Residents	0.19	3.07
<b>Top 10 in NC, 2nd Strongest</b>	Property Crimes per 10,000 Residents	3.19	15.74
<b>Weakest</b>	Percentage of Inactive Voters	10.75%	11.3%

### Socioeconomics: 40.34

This component considers factors such as income levels, poverty rates, and inequality, which can impact a community's ability to withstand and recover from economic shocks. Macon County's performance on this dimension is average when compared to other North Carolina counties, ranking 58th in the state.

Notable variables for Macon County within this dimension include:

VARIABLE STRENGTH	FACTOR	MACON COUNTY VALUE	NC COUNTY AVERAGE VALUE
<b>Strongest</b>	Unemployment Rate (Q4)	3.3%	3.9%
<b>2nd Strongest</b>	Percentage of Households Spending more than 30% Income on Housing	21.95%	24.53%
<b>Bottom 10 in NC, Weakest</b>	Percentage of Population without Health Insurance	15.48%	11.23%

---

**Education: 59.68**

This component evaluates the quality of educational institutions and the educational attainment levels of the local population, which play a crucial role in developing a skilled and adaptable workforce. Macon County's performance on this dimension is fairly strong when compared to other North Carolina counties, ranking 21st in the state.

Notable variables for Macon County within this dimension include:

<b>VARIABLE STRENGTH</b>	<b>FACTOR</b>	<b>MACON COUNTY VALUE</b>	<b>NC COUNTY AVERAGE VALUE</b>
<b>Top 10 in NC, Strongest</b>	Dropout Rate	0.24%	1.65%
<b>2nd Strongest</b>	Local LEA Financial Resources (per ADM)	\$14,368	\$8,683
<b>Bottom 10 in NC, Weakest</b>	Graduation Percentage	82.5%	88.03%

---

**Household Characteristics: 38.21**

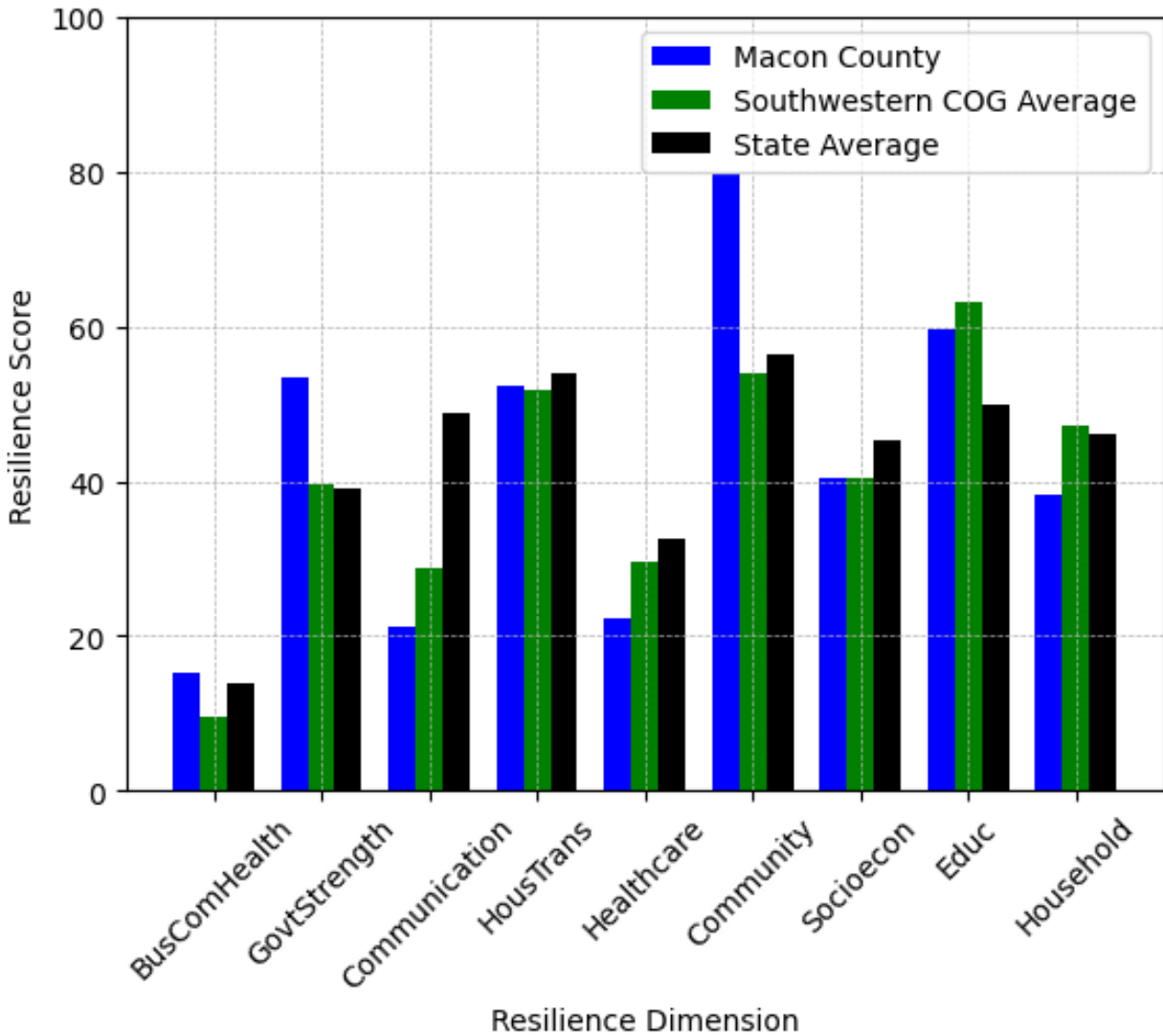
This component examines factors such as the proportion of single-parent households, age distribution, and the proportion of individuals with disabilities, as these elements can influence a community's resilience and ability to recover from economic disruptions. Macon County's performance on this dimension is average when compared to other North Carolina counties, ranking 73rd in the state.

Notable variables for Macon County within this dimension include:

<b>VARIABLE STRENGTH</b>	<b>FACTOR</b>	<b>MACON COUNTY VALUE</b>	<b>NC COUNTY AVERAGE VALUE</b>
<b>Strongest</b>	Percentage of Population 17 and Younger	17.8%	20.37%
<b>2nd Strongest</b>	Percentage of Single Parent Households	27.164%	36.132%
<b>Bottom 10 in NC, Weakest</b>	Percentage of Population 65 and Older	28.79%	20.53%

---

## Macon County's Resilience Dimension Scores Over Time As Compared to the Region and State Averages



*Note: Resilience Scores are normalized from 1 to 100 with the most resilient county scoring 100. The Resilience Score is determined based on a county's performance relative to NC's other 99 counties.*

## **Notable Trends in Resilience Indicators, 2017-2022**

*NOTE: The key trends in the this section are identified based on change rates of at least .15 standard deviations over at least 5 years. Variables are positively oriented such that a positive trend indicates improved performance (e.g., 'improvement' in property crime is a lower crime rate, while 'decline' in property crime indicates a higher crime rate).*

### **Trends in the Business Community Health dimension:**

Total Employment Level: **892** (5-year change rate = **7.98%**, from 11,178 to 12,070)

↑ Change in rank from 64 to 63 in NC

Average Weekly Wages: **192 dollars** (5-year change rate = **28.32%**, from 678 to 870)

↑ Change in rank from 80 to 70 in NC

Real GDP in Current Dollars: **214,252 dollars** (5-year change rate = **15.28%**, from 1,401,851 to 1,616,103)

↑ Change in rank from 64 to 57 in NC

Ratio of Available Child Care Slots to Number of Children under Five: **-0.85** (5-year change rate = **-45.78%**, from 1.85 to 1)

↓ Change in rank from 1 to 3 in NC

### **Trends in the County Government Fiscal Strength dimension:**

Adjusted Tax Base: **-326 dollars** (5-year change rate = **-0.15%**, from 218,921 to 218,595)

↓ Change in rank from 4 to 7 in NC

County Sales Tax: **6,353,481 dollars** (5-year change rate = **67.24%**, from 9,449,534 to 15,803,015)

↑ Change in rank from 52 to 51 in NC

### **Trends in the Housing & Transportation dimension:**

Ratio of Average Estimated Home Value to Median Income : **1.69** (5-year change rate = **16.16%**, from 10.44 to 12.13)

↑ Change in rank from 70 to 64 in NC

Average Available Rent Money less the Average HUD Fair Market Rent: **240.3 dollars** (5-year change rate = **54.83%**, from 438.3 to 678.6)

↑ Change in rank from 69 to 65 in NC

**Trends in the Healthcare dimension:**

Opioid Deaths per 100,000 Residents: **10.2** (5-year change rate = **35.42%**, from 28.8 to 39)

↑ Change in rank from 65 to 59 in NC

Nurses per 10,000 Residents: **-17.48** (5-year change rate = **-16.46%**, from 106.22 to 88.74)

↓ Change in rank from 74 to 81 in NC

Physicians per 10,000 Residents: **-3.99** (5-year change rate = **-19.01%**, from 20.99 to 17)

↓ Change in rank from 23 to 33 in NC

Mental Health Professionals per 10,000 Residents: **-0.28** (5-year change rate = **-5.26%**, from 5.32 to 5.04)

↓ Change in rank from 49 to 56 in NC

**Trends in the Community Cohesion dimension:**

Violent Crimes per 10,000 Residents: **-0.37** (4-year change rate = **-66.36%**, from 0.55 to 0.19)

↑ Change in rank from 8 to 5 in NC

Property Crimes per 10,000 Residents: **-1.82** (4-year change rate = **-36.28%**, from 5 to 3.19)

↑ Change in rank from 8 to 6 in NC



Nonprofits Organizations per 1,000 Residents: **-1.32** (5-year change rate = **-24.38%**, from 5.41 to 4.09)

↓ Change in rank from 7 to 24 in NC

**Trends in the Socioeconomics dimension:**

Unemployment Rate (Q4): **-0.8 percent** (5-year change rate = **-18.85%**, from 4.1 to 3.3)

↑ Change in rank from 40 to 24 in NC

Median Household Income: **15,100 dollars** (5-year change rate = **31.13%**, from 48,500 to 63,600)

↑ Change in rank from 67 to 59 in NC

**Trends in the Education dimension:**

Graduation Percentage: **-11.5 percent** (5-year change rate = **-12.23%**, from 94 to 82.5)

↓ Change in rank from 3 to 92 in NC

Dropout Rate: **-1.28 percent** (5-year change rate = **-84.3%**, from 1.52 to 0.24)

↑ Change in rank from 21 to 5 in NC

3rd Grade Reading Proficiency: **-10.5 percent** (5-year change rate = **-17.53%**, from 59.9 to 49.4)

↓ Change in rank from 22 to 31 in NC

**Data Advisements:**

- Availability of Broadband Services is not available for 2022 and was excluded from calculating this county's dimension and resilience score.
- Adoption Rate of Broadband Services is not available for 2022 and was excluded from calculating this county's dimension and resilience score.