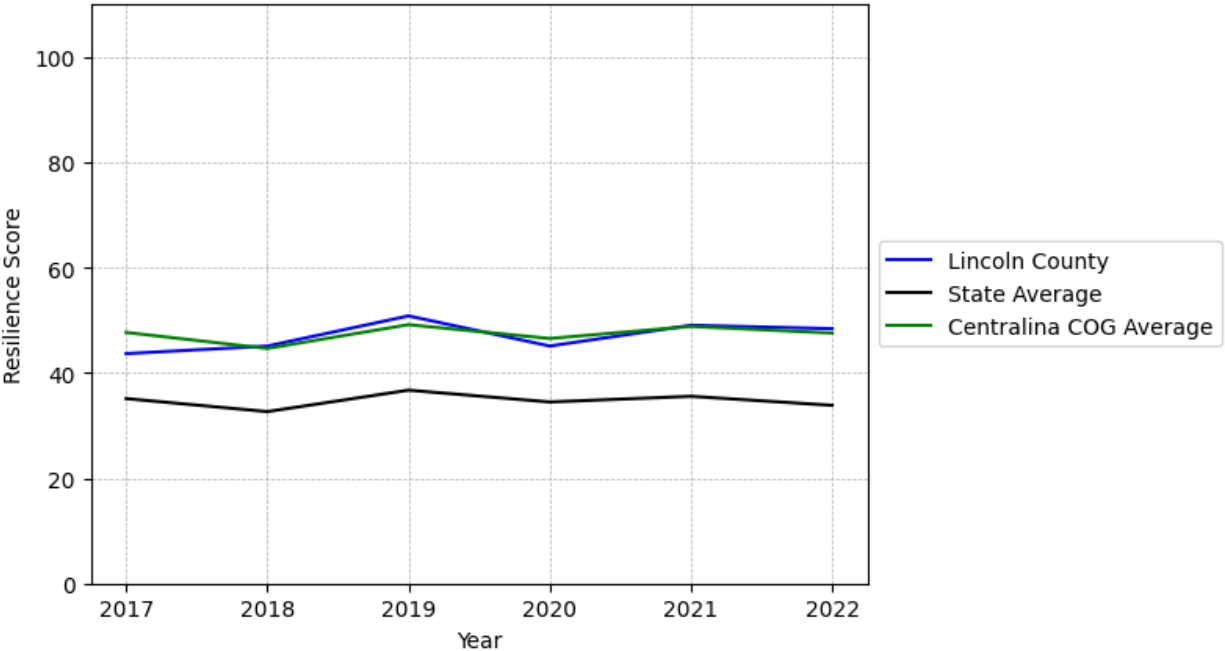


Lincoln County Summary

Resilience Score: 48.4

In 2022, Lincoln County achieved a Resilience Score of 48.4, which is fairly strong as compared to the North Carolina State average.

**Lincoln County's Resilience Score Over Time
As Compared to the Region and State Averages**



Note: Resilience Scores are normalized from 1 to 100 with the most resilient county scoring 100. The Resilience Score is determined based on a county's performance relative to NC's other 99 counties.

Lincoln County's Resilience Score is comprised of 9 distinct dimensions of resilience. Below are Lincoln County's scores for 2022 on those 9 dimensions, and their rank relative to other North Carolina counties.

Business Community Health: 11.62

This component examines the strength and diversity of the local business community, including factors such as the number of businesses, employment levels, and industry diversity. Lincoln County's performance on this dimension is average when compared to other North Carolina counties, ranking 49th in the state.

Notable variables for Lincoln County within this dimension include:

VARIABLE STRENGTH	FACTOR	LINCOLN COUNTY VALUE	NC COUNTY AVERAGE VALUE
Strongest	Percentage of Companies in Science, Engineering, & Technology Industries	8.54%	6.13%
2nd Strongest	Average Weekly Wages	\$1,009	\$951
Weakest	Ratio of Available Child Care Slots to Number of Children under Five	0.44	0.59

County Government Fiscal Strength: 41.02

This component looks at the financial health of local governments, including their ability to generate revenue, manage debt, and maintain adequate reserves to weather economic downturns. Lincoln County's performance on this dimension is average when compared to other North Carolina counties, ranking 55th in the state.

Notable variables for Lincoln County within this dimension include:

VARIABLE STRENGTH	FACTOR	LINCOLN COUNTY VALUE	NC COUNTY AVERAGE VALUE
Strongest	Capital Assets Condition Ratio of County Government	0.63	0.51
2nd Strongest	Dependency Ratio of County Government	0.11	0.16
Weakest	Debt Service Ratio of County Government	0.14	0.07

Communication: 67.42

This component assesses the availability and quality of communication infrastructure, such as broadband internet access, which is crucial for businesses and residents to stay connected and resilient during disruptions. Lincoln County's performance on this dimension is fairly strong when compared to other North Carolina counties, ranking 20th in the state.

Notable variables for Lincoln County within this dimension include:

VARIABLE STRENGTH	FACTOR	LINCOLN COUNTY VALUE	NC COUNTY AVERAGE VALUE
Strongest	Percentage of Population without Smartphones	12.62%	17.22%
2nd Strongest	In-Vehicle High-Speed Mobile Data Availability	0.49	0.37
Weakest	Broadband Availability	0.65	0.6

Housing & Transportation: 84.8

This component evaluates the accessibility and affordability of housing, as well as the availability of reliable transportation options, which are essential for a resilient workforce and economy. Lincoln County's performance on this dimension is strong when compared to other North Carolina counties, ranking 9th in the state.

Notable variables for Lincoln County within this dimension include:

VARIABLE STRENGTH	FACTOR	LINCOLN COUNTY VALUE	NC COUNTY AVERAGE VALUE
Top 10 in NC, Strongest	Percentage of Owner-Occupied Homes	72.73%	57.87%
Top 10 in NC, 2nd Strongest	Average Available Rent Money less the Average HUD Fair Market Rent	\$1,373.7	\$799.87
Weakest	Percentage of People with Commute Times Over 45 Minutes	22.53%	16.69%

Healthcare: 18.08

The healthcare component examines the availability and quality of healthcare facilities, services, and professionals, which are critical for maintaining a healthy and productive workforce. Lincoln County's performance on this dimension is fairly weak when compared to other North Carolina counties, ranking 79th in the state.

Notable variables for Lincoln County within this dimension include:

VARIABLE STRENGTH	FACTOR	LINCOLN COUNTY VALUE	NC COUNTY AVERAGE VALUE
Strongest	Opioid Deaths per 100,000 Residents	33.7	38.73
2nd Strongest	Nurses per 10,000	161.6	262.64

Bottom 10 in NC, Weakest	Residents		
	Nursing Home Beds per 1,000 Residents of Age 65+	17.13	27.53

Community Cohesion: 67.34

This component looks at the strength of social networks, community engagement, and the ability of residents to work together to address challenges and support one another during times of adversity. Lincoln County's performance on this dimension is fairly strong when compared to other North Carolina counties, ranking 26th in the state.

Notable variables for Lincoln County within this dimension include:

VARIABLE STRENGTH	FACTOR	LINCOLN COUNTY VALUE	NC COUNTY AVERAGE VALUE
Top 10 in NC, Strongest	Yearly Population Change Percentage	3.863%	0.906%
2nd Strongest	Percentage of Inactive Voters	9.42%	11.3%
Bottom 10 in NC, Weakest	Nonprofits Organizations per 1,000 Residents	0.63	3.17

Socioeconomics: 75.65

This component considers factors such as income levels, poverty rates, and inequality, which can impact a community's ability to withstand and recover from economic shocks. Lincoln County's performance on this dimension is strong when compared to other North Carolina counties, ranking 9th in the state.

Notable variables for Lincoln County within this dimension include:

VARIABLE STRENGTH	FACTOR	LINCOLN COUNTY VALUE	NC COUNTY AVERAGE VALUE
Top 10 in NC, Strongest	Total Percentage of Population Below 150% Poverty Line	15.86%	25.93%
Top 10 in NC, 2nd Strongest	Unemployment Rate (Q4)	3.1%	3.9%
Top 10 in NC	Percentage of Households with Income over \$200k	10.89%	5.28%
Top 10 in NC	Percentage of Households Spending more than 30% Income on Housing	18.63%	24.53%

Top 10 in NC	Percentage of Population without Health Insurance	8.55%	11.23%
Weakest	Gini Coefficient (Income Inequality)	0.46	0.46

Education: 54.1

This component evaluates the quality of educational institutions and the educational attainment levels of the local population, which play a crucial role in developing a skilled and adaptable workforce. Lincoln County's performance on this dimension is average when compared to other North Carolina counties, ranking 34th in the state.

Notable variables for Lincoln County within this dimension include:

VARIABLE STRENGTH	FACTOR	LINCOLN COUNTY VALUE	NC COUNTY AVERAGE VALUE
Strongest	Teacher Attrition Rate	0.08	0.12
2nd Strongest	3rd Grade Reading Proficiency	52%	43.1%
Weakest	Student to Teacher Ratio	15	14

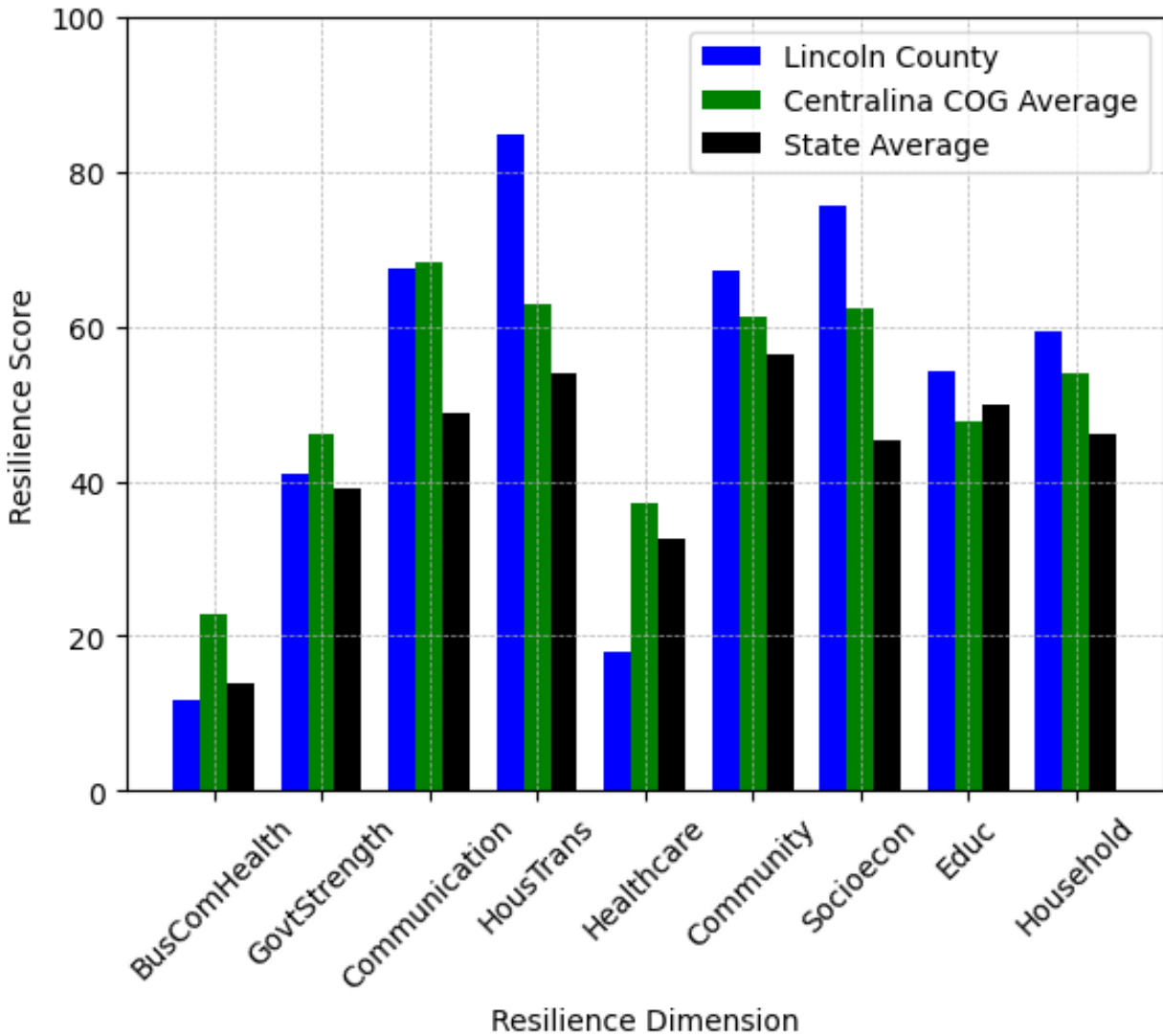
Household Characteristics: 59.4

This component examines factors such as the proportion of single-parent households, age distribution, and the proportion of individuals with disabilities, as these elements can influence a community's resilience and ability to recover from economic disruptions. Lincoln County's performance on this dimension is strong when compared to other North Carolina counties, ranking 15th in the state.

Notable variables for Lincoln County within this dimension include:

VARIABLE STRENGTH	FACTOR	LINCOLN COUNTY VALUE	NC COUNTY AVERAGE VALUE
Strongest	Percentage of Single Parent Households	24.052%	36.132%
2nd Strongest	Percentage of Population with a Disability	15.161%	16.566%
Weakest	Percentage of Population 17 and Younger	20.76%	20.37%

Lincoln County's Resilience Dimension Scores Over Time As Compared to the Region and State Averages



Note: Resilience Scores are normalized from 1 to 100 with the most resilient county scoring 100. The Resilience Score is determined based on a county's performance relative to NC's other 99 counties.

Notable Trends in Resilience Indicators, 2017-2022

NOTE: The key trends in the this section are identified based on change rates of at least .15 standard deviations over at least 5 years. Variables are positively oriented such that a positive trend indicates improved performance (e.g., 'improvement' in property crime is a lower crime rate, while 'decline' in property crime indicates a higher crime rate).

Trends in the Business Community Health dimension:

Total Employment Level: **4,494** (5-year change rate = **19.87%**, from 22,615 to 27,109)

↑ Change in rank from 40 to 35 in NC

Average Weekly Wages: **204 dollars** (5-year change rate = **25.34%**, from 805 to 1,009)

↓ Change in rank from 20 to 21 in NC

Real GDP in Current Dollars: **352,738 dollars** (5-year change rate = **12.53%**, from 2,814,540 to 3,167,278)

↑ Change in rank from 34 to 32 in NC

Trends in the County Government Fiscal Strength dimension:

Adjusted Tax Base: **26,730 dollars** (5-year change rate = **26.07%**, from 102,543 to 129,273)

↑ Change in rank from 41 to 35 in NC

County Sales Tax: **15,050,368 dollars** (5-year change rate = **90.15%**, from 16,694,208 to 31,744,576)

↑ Change in rank from 33 to 27 in NC

Trends in the Housing & Transportation dimension:

Ratio of Average Estimated Home Value to Median Income : **1.83** (5-year change rate = **36.05%**, from 5.08 to 6.91)

↓ Change in rank from 43 to 44 in NC

Average Available Rent Money less the Average HUD Fair Market Rent: **841.5 dollars** (5-year change rate = **158.12%**, from 532.2 to 1,373.7)

↑ Change in rank from 45 to 4 in NC

Trends in the Healthcare dimension:

Opioid Deaths per 100,000 Residents: **17.9** (5-year change rate = **113.29%**, from 15.8 to 33.7)

↓ Change in rank from 22 to 40 in NC

Nurses per 10,000 Residents: **1.49** (5-year change rate = **0.93%**, from 160.11 to 161.6)

↑ Change in rank from 53 to 51 in NC

Physicians per 10,000 Residents: **-0.96** (5-year change rate = **-10.08%**, from 9.52 to 8.56)

↓ Change in rank from 61 to 65 in NC

Mental Health Professionals per 10,000 Residents: **-0.38** (5-year change rate = **-7.97%**, from 4.77 to 4.39)

↓ Change in rank from 60 to 68 in NC

Trends in the Socioeconomics dimension:

Unemployment Rate (Q4): **-0.7 percent** (5-year change rate = **-18.58%**, from 3.8 to 3.1)

↑ Change in rank from 15 to 9 in NC

Median Household Income: **36,100 dollars** (5-year change rate = **67.35%**, from 53,600 to 89,700)

↑ Change in rank from 43 to 14 in NC

Trends in the Education dimension:

Dropout Rate: **-0.47 percent** (5-year change rate = **-19.85%**, from 2.36 to 1.89)

↓ Change in rank from 55 to 62 in NC

Student to Teacher Ratio: **-1** (4-year change rate = **-4.25%**, from 16 to 15)

↑ Change in rank from 75 to 68 in NC

3rd Grade Reading Proficiency: **-7.6 percent** (5-year change rate = **-12.75%**, from 59.6 to 52)

↑ Change in rank from 25 to 21 in NC

Data Advisements:

- Availability of Broadband Services is not available for 2022 and was excluded from calculating this county's dimension and resilience score.
- Adoption Rate of Broadband Services is not available for 2022 and was excluded from calculating this county's dimension and resilience score.