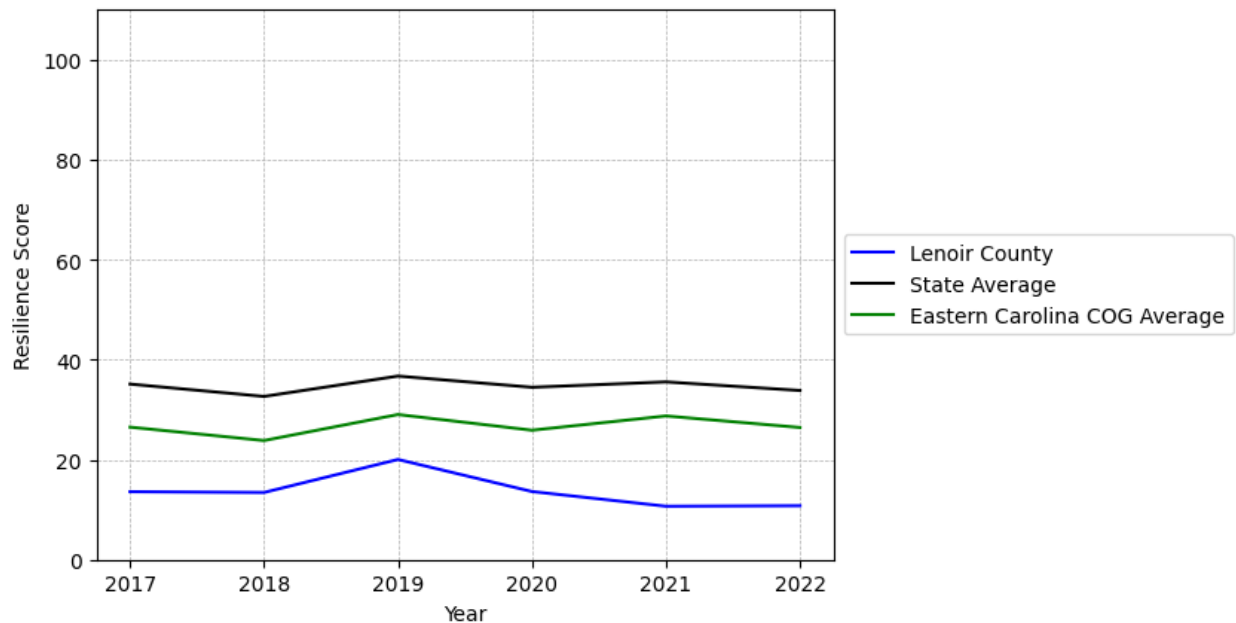


Lenoir County Summary

Resilience Score: 10.79

In 2022, Lenoir County achieved a Resilience Score of 10.79, which is weak as compared to the North Carolina State average.

**Lenoir County's Resilience Score Over Time
As Compared to the Region and State Averages**



Note: Resilience Scores are normalized from 1 to 100 with the most resilient county scoring 100. The Resilience Score is determined based on a county's performance relative to NC's other 99 counties.

Lenoir County's Resilience Score is comprised of 9 distinct dimensions of resilience. Below are Lenoir County's scores for 2022 on those 9 dimensions, and their rank relative to other North Carolina counties.

Business Community Health: 10.63

This component examines the strength and diversity of the local business community, including factors such as the number of businesses, employment levels, and industry diversity. Lenoir County's performance on this dimension is average when compared to other North Carolina counties, ranking 54th in the state.

Notable variables for Lenoir County within this dimension include:

VARIABLE STRENGTH	FACTOR	LENOIR COUNTY VALUE	NC COUNTY AVERAGE VALUE
Strongest	Science, Engineering, & Technology Industries Employment Percentage	2.54%	1.79%
2nd Strongest	Total Employment Level	28,908	45,758
Weakest	Percentage of Companies in Science, Engineering, & Technology Industries	3.43%	6.13%

County Government Fiscal Strength: 17.57

This component looks at the financial health of local governments, including their ability to generate revenue, manage debt, and maintain adequate reserves to weather economic downturns. Lenoir County's performance on this dimension is weak when compared to other North Carolina counties, ranking 90th in the state.

Notable variables for Lenoir County within this dimension include:

VARIABLE STRENGTH	FACTOR	LENOIR COUNTY VALUE	NC COUNTY AVERAGE VALUE
Strongest	Solvency Ratio of County Government	51.7	46.7
2nd Strongest	Operations Ratio of County Government	1.09	1.11
Bottom 10 in NC, Weakest	Capital Assets Condition Ratio of County Government	0.32	0.51

Communication: 59.94

This component assesses the availability and quality of communication infrastructure, such as broadband internet access, which is crucial for businesses and residents to stay connected and resilient during disruptions. Lenoir County's performance on this dimension is average when compared to other North Carolina counties, ranking 31st in the state.

Notable variables for Lenoir County within this dimension include:

VARIABLE STRENGTH	FACTOR	LENOIR COUNTY VALUE	NC COUNTY AVERAGE VALUE
Strongest	Local High-Speed Mobile Data Availability	0.9	0.66
2nd Strongest	In-Vehicle High-Speed Mobile Data Availability	0.53	0.37
Weakest	Broadband Availability	0.55	0.6

Housing & Transportation: 34.04

This component evaluates the accessibility and affordability of housing, as well as the availability of reliable transportation options, which are essential for a resilient workforce and economy. Lenoir County's performance on this dimension is weak when compared to other North Carolina counties, ranking 92nd in the state.

Notable variables for Lenoir County within this dimension include:

VARIABLE STRENGTH	FACTOR	LENOIR COUNTY VALUE	NC COUNTY AVERAGE VALUE
Strongest	Percentage of People Driving Alone to Work	85.18%	86.36%
2nd Strongest	Ratio of Average Estimated Home Value to Median Income	4.48	13.67
Bottom 10 in NC	Percentage of Households with More Residents than Rooms	3.26%	2.1%
Bottom 10 in NC, Weakest	Percentage of Homes Built Before 1980	55.55%	40.9%

Healthcare: 34.37

The healthcare component examines the availability and quality of healthcare facilities, services, and professionals, which are critical for maintaining a healthy and productive workforce. Lenoir County's performance on this dimension is average when compared to other North Carolina counties, ranking 25th in the state.

Notable variables for Lenoir County within this dimension include:

VARIABLE STRENGTH	FACTOR	LENOIR COUNTY VALUE	NC COUNTY AVERAGE VALUE
Strongest	Nursing Home Beds per	32.44	27.53

	1,000 Residents of Age 65+		
2nd Strongest	Mental Health Professionals per 10,000 Residents	8.43	6.6
Weakest	Opioid Deaths per 100,000 Residents	35.7	38.73

Community Cohesion: 48.25

This component looks at the strength of social networks, community engagement, and the ability of residents to work together to address challenges and support one another during times of adversity. Lenoir County's performance on this dimension is average when compared to other North Carolina counties, ranking 76th in the state.

Notable variables for Lenoir County within this dimension include:

VARIABLE STRENGTH	FACTOR	LENOIR COUNTY VALUE	NC COUNTY AVERAGE VALUE
Strongest	Property Crimes per 10,000 Residents	11.66	15.74
2nd Strongest	Violent Crimes per 10,000 Residents	2.51	3.07
Weakest	Yearly Population Change Percentage	-0.401%	0.906%

Socioeconomics: 22.61

This component considers factors such as income levels, poverty rates, and inequality, which can impact a community's ability to withstand and recover from economic shocks. Lenoir County's performance on this dimension is weak when compared to other North Carolina counties, ranking 83rd in the state.

Notable variables for Lenoir County within this dimension include:

VARIABLE STRENGTH	FACTOR	LENOIR COUNTY VALUE	NC COUNTY AVERAGE VALUE
Strongest	Unemployment Rate (Q4)	3.5%	3.9%
2nd Strongest	Percentage of Population without Health Insurance	10.82%	11.23%
Bottom 10 in NC, Weakest	Total Percentage of Population Below 150% Poverty Line	36.94%	25.93%

Education: 34.37

This component evaluates the quality of educational institutions and the educational attainment levels of the local population, which play a crucial role in developing a skilled and adaptable workforce. Lenoir County's performance on this dimension is fairly weak when compared to other North Carolina counties, ranking 74th in the state.

Notable variables for Lenoir County within this dimension include:

VARIABLE STRENGTH	FACTOR	LENOIR COUNTY VALUE	NC COUNTY AVERAGE VALUE
Strongest	Teacher Attrition Rate	0.1	0.12
2nd Strongest	Postsecondary Enrollment Percentage	22.99%	25.48%
Weakest	Local LEA Financial Resources (per ADM)	\$4,581	\$8,683

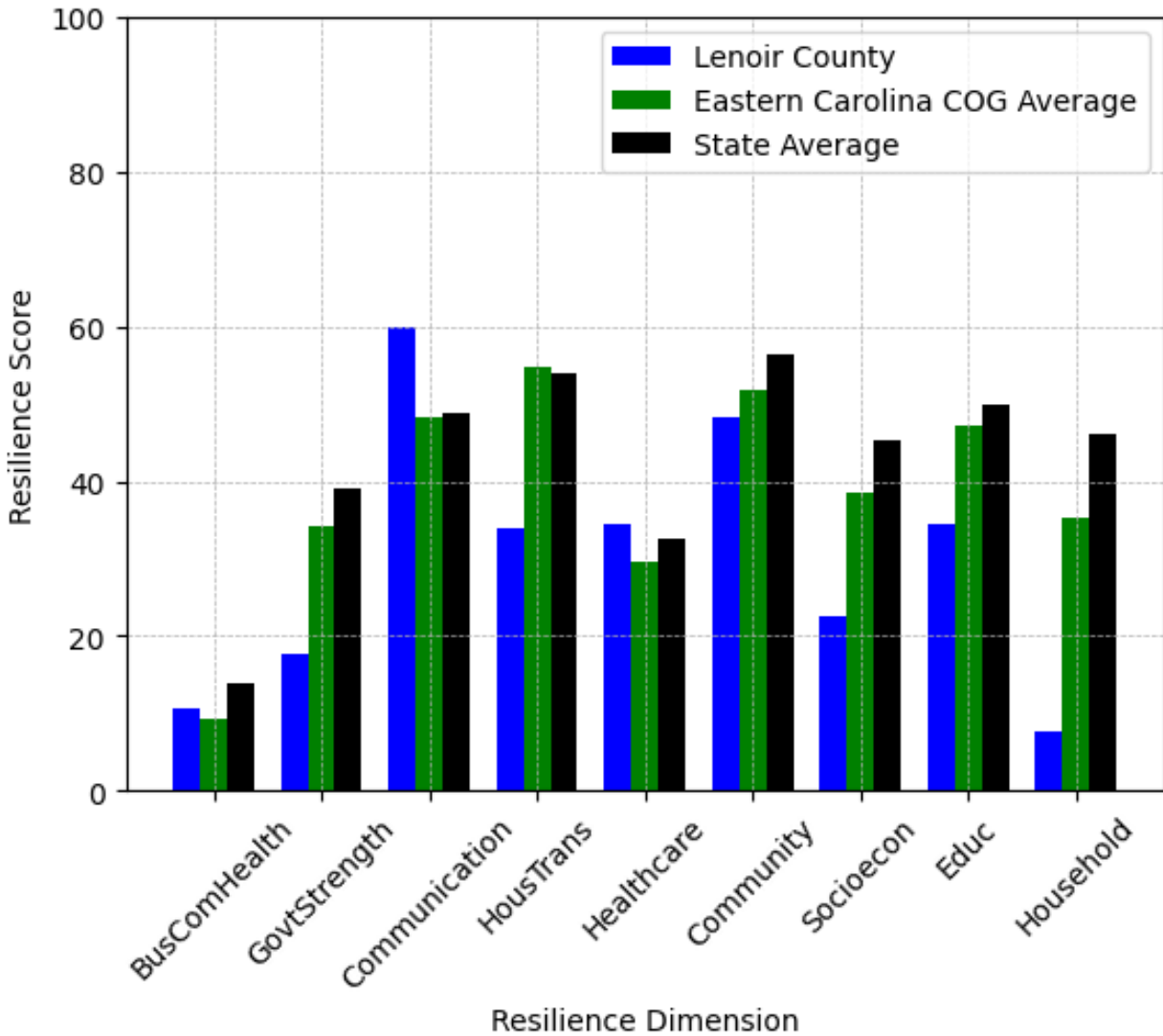
Household Characteristics: 7.71

This component examines factors such as the proportion of single-parent households, age distribution, and the proportion of individuals with disabilities, as these elements can influence a community's resilience and ability to recover from economic disruptions. Lenoir County's performance on this dimension is weak when compared to other North Carolina counties, ranking 98th in the state.

Notable variables for Lenoir County within this dimension include:

VARIABLE STRENGTH	FACTOR	LENOIR COUNTY VALUE	NC COUNTY AVERAGE VALUE
Strongest	Percentage of Population 65 and Older	20.87%	20.53%
2nd Strongest	Percentage of Population with Limited English Proficiency	1.761%	1.454%
Bottom 10 in NC	Percentage of Single Parent Households	55.662%	36.132%
Bottom 10 in NC, Weakest	Percentage of Population with a Disability	23.366%	16.566%

Lenoir County's Resilience Dimension Scores Over Time As Compared to the Region and State Averages



Note: Resilience Scores are normalized from 1 to 100 with the most resilient county scoring 100. The Resilience Score is determined based on a county's performance relative to NC's other 99 counties.

Notable Trends in Resilience Indicators, 2017-2022

NOTE: The key trends in the this section are identified based on change rates of at least .15 standard deviations over at least 5 years. Variables are positively oriented such that a positive trend indicates improved performance (e.g., 'improvement' in property crime is a lower crime rate, while 'decline' in property crime indicates a higher crime rate).

Trends in the Business Community Health dimension:

Total Employment Level: **386** (5-year change rate = **1.35%**, from 28,522 to 28,908)

↑ Change in rank from 33 to 32 in NC

Average Weekly Wages: **225 dollars** (5-year change rate = **29.92%**, from 752 to 977)

↑ Change in rank from 34 to 33 in NC

Real GDP in Current Dollars: **-191,099 dollars** (5-year change rate = **-6.25%**, from 3,057,812 to 2,866,713)

↓ Change in rank from 32 to 33 in NC

Trends in the County Government Fiscal Strength dimension:

Adjusted Tax Base: **7,829 dollars** (5-year change rate = **11.41%**, from 68,608 to 76,437)

↓ Change in rank from 83 to 90 in NC

County Sales Tax: **3,838,626 dollars** (5-year change rate = **38.27%**, from 10,030,911 to 13,869,537)

↓ Change in rank from 50 to 52 in NC

Trends in the Housing & Transportation dimension:

Ratio of Average Estimated Home Value to Median Income : **0.46** (5-year change rate = **11.53%**, from 4.02 to 4.48)

↑ Change in rank from 35 to 28 in NC

Average Available Rent Money less the Average HUD Fair Market Rent: **146.6 dollars** (5-year change rate = **33.35%**, from 439.6 to 586.2)

↓ Change in rank from 68 to 76 in NC

Trends in the Healthcare dimension:

Opioid Deaths per 100,000 Residents: **2.3** (5-year change rate = **6.89%**, from 33.4 to 35.7)

↑ Change in rank from 78 to 47 in NC

Nurses per 10,000 Residents: **-15.43** (5-year change rate = **-5.54%**, from 278.38 to 262.95)

↓ Change in rank from 25 to 27 in NC

Physicians per 10,000 Residents: **0.38** (5-year change rate = **2.12%**, from 17.94 to 18.32)

↑ Change in rank from 29 to 26 in NC

Mental Health Professionals per 10,000 Residents: **0.72** (5-year change rate = **9.34%**, from 7.71 to 8.43)

↓ Change in rank from 21 to 25 in NC

Trends in the Community Cohesion dimension:

Violent Crimes per 10,000 Residents: **-1.96** (4-year change rate = **-43.77%**, from 4.47 to 2.51)

↑ Change in rank from 84 to 49 in NC

Property Crimes per 10,000 Residents: **-14.63** (4-year change rate = **-55.65%**, from 26.3 to 11.66)

↑ Change in rank from 74 to 28 in NC

Nonprofits Organizations per 1,000 Residents: **1.24** (5-year change rate = **484.61%**, from 0.25 to 1.49)

↑ Change in rank from 98 to 86 in NC

Trends in the Socioeconomics dimension:

Unemployment Rate (Q4): **-0.8 percent** (5-year change rate = **-18.11%**, from 4.2 to 3.5)

↑ Change in rank from 46 to 44 in NC

Median Household Income: **9,400 dollars** (5-year change rate = **20.17%**, from 46,600 to 56,000)

↓ Change in rank from 74 to 84 in NC

Trends in the Education dimension:

Graduation Percentage: **7.6 percent** (5-year change rate = **9.48%**, from 80.2 to 87.8)

↑ Change in rank from 94 to 57 in NC

Dropout Rate: **-0.7 percent** (5-year change rate = **-25.17%**, from 2.76 to 2.07)

↑ Change in rank from 72 to 70 in NC

Student to Teacher Ratio: **-1** (4-year change rate = **-3.69%**, from 16 to 15)

↑ Change in rank from 82 to 77 in NC

3rd Grade Reading Proficiency: **-14.8 percent** (5-year change rate = **-29.78%**, from 49.7 to 34.9)

↓ Change in rank from 72 to 80 in NC

Data Advisements:

- Availability of Broadband Services is not available for 2022 and was excluded from calculating this county's dimension and resilience score.
- Adoption Rate of Broadband Services is not available for 2022 and was excluded from calculating this county's dimension and resilience score.