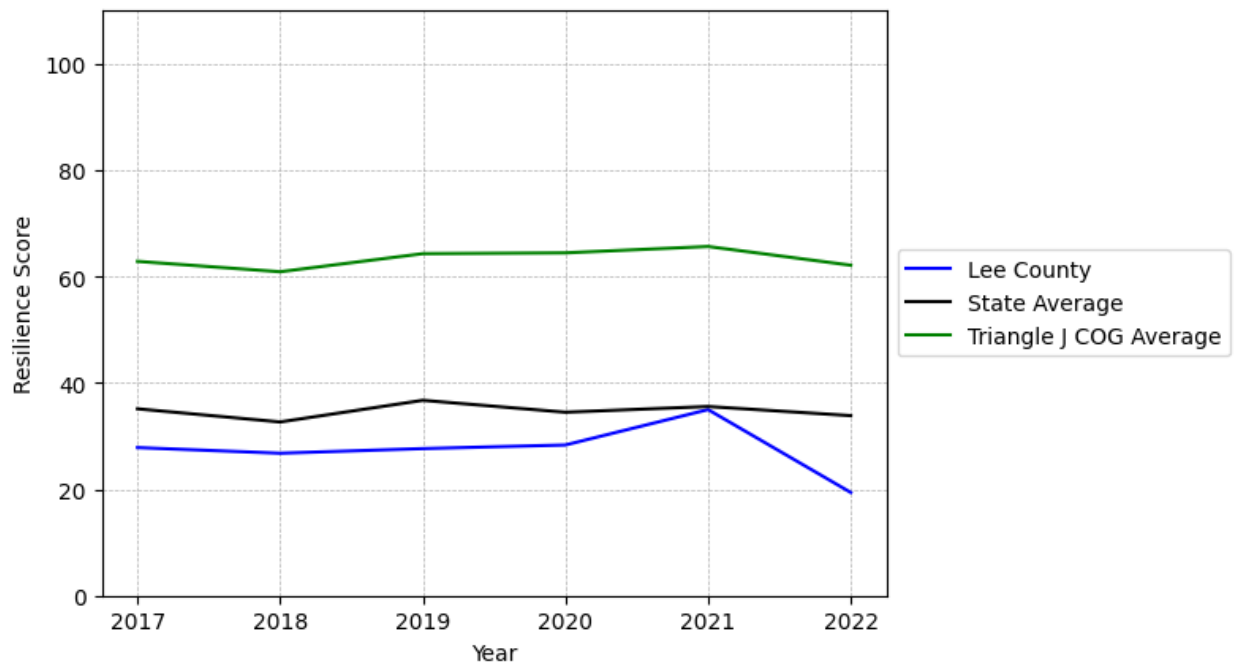


Lee County Summary

Resilience Score: 19.4

In 2022, Lee County achieved a Resilience Score of 19.4, which is fairly weak as compared to the North Carolina State average.

**Lee County's Resilience Score Over Time
As Compared to the Region and State Averages**



Note: Resilience Scores are normalized from 1 to 100 with the most resilient county scoring 100. The Resilience Score is determined based on a county's performance relative to NC's other 99 counties.

Lee County's Resilience Score is comprised of 9 distinct dimensions of resilience. Below are Lee County's scores for 2022 on those 9 dimensions, and their rank relative to other North Carolina counties.

Business Community Health: 13.8

This component examines the strength and diversity of the local business community, including factors such as the number of businesses, employment levels, and industry diversity. Lee County's performance on this dimension is average when compared to other North Carolina counties, ranking 35th in the state.

Notable variables for Lee County within this dimension include:

VARIABLE STRENGTH	FACTOR	LEE COUNTY VALUE	NC COUNTY AVERAGE VALUE
Strongest	Average Weekly Wages	\$992	\$951
2nd Strongest	Science, Engineering, & Technology Industries Employment Percentage	1.77%	1.79%
Weakest	Private Sector Diversity	0.233	0.28

County Government Fiscal Strength: 22.81

This component looks at the financial health of local governments, including their ability to generate revenue, manage debt, and maintain adequate reserves to weather economic downturns. Lee County's performance on this dimension is fairly weak when compared to other North Carolina counties, ranking 83rd in the state.

Notable variables for Lee County within this dimension include:

VARIABLE STRENGTH	FACTOR	LEE COUNTY VALUE	NC COUNTY AVERAGE VALUE
Top 10 in NC, Strongest	Dependency Ratio of County Government	0.1	0.16
2nd Strongest	Quick Ratio of County Government	19.73	16.4
Weakest	Capital Assets Condition Ratio of County Government	0.38	0.51

Communication: 57.92

This component assesses the availability and quality of communication infrastructure, such as broadband internet access, which is crucial for businesses and residents to stay connected and resilient during disruptions. Lee County's performance on this dimension is average when compared to other North Carolina counties, ranking 34th in the state.

Notable variables for Lee County within this dimension include:

VARIABLE STRENGTH	FACTOR	LEE COUNTY VALUE	NC COUNTY AVERAGE VALUE
Strongest	Percentage of Population without Smartphones	12.59%	17.22%
2nd Strongest	Local High-Speed Mobile Data Availability	0.73	0.66
Weakest	In-Vehicle High-Speed Mobile Data Availability	0.32	0.37

Housing & Transportation: 58.28

This component evaluates the accessibility and affordability of housing, as well as the availability of reliable transportation options, which are essential for a resilient workforce and economy. Lee County's performance on this dimension is average when compared to other North Carolina counties, ranking 52nd in the state.

Notable variables for Lee County within this dimension include:

VARIABLE STRENGTH	FACTOR	LEE COUNTY VALUE	NC COUNTY AVERAGE VALUE
Strongest	Percentage of Population without Vehicles	3.95%	5.75%
2nd Strongest	Percentage of Homes Built Before 1980	37.96%	40.9%
Bottom 10 in NC, Weakest	Percentage of Households with More Residents than Rooms	3.27%	2.1%

Healthcare: 16.47

The healthcare component examines the availability and quality of healthcare facilities, services, and professionals, which are critical for maintaining a healthy and productive workforce. Lee County's performance on this dimension is fairly weak when compared to other North Carolina counties, ranking 87th in the state.

Notable variables for Lee County within this dimension include:

VARIABLE STRENGTH	FACTOR	LEE COUNTY VALUE	NC COUNTY AVERAGE VALUE
Strongest	Nurses per 10,000 Residents	188.99	262.64
2nd Strongest	Physicians per 10,000	14.33	16.05

Weakest	Residents Opioid Deaths per 100,000 Residents	58.3	38.73
----------------	---	------	-------

Community Cohesion: 60.47

This component looks at the strength of social networks, community engagement, and the ability of residents to work together to address challenges and support one another during times of adversity. Lee County's performance on this dimension is average when compared to other North Carolina counties, ranking 46th in the state.

Notable variables for Lee County within this dimension include:

VARIABLE STRENGTH	FACTOR	LEE COUNTY VALUE	NC COUNTY AVERAGE VALUE
Strongest	Yearly Population Change Percentage	2.001%	0.906%
2nd Strongest	Violent Crimes per 10,000 Residents	1.71	3.07
Weakest	Nonprofits Organizations per 1,000 Residents	1.65	3.17

Socioeconomics: 38.11

This component considers factors such as income levels, poverty rates, and inequality, which can impact a community's ability to withstand and recover from economic shocks. Lee County's performance on this dimension is average when compared to other North Carolina counties, ranking 63rd in the state.

Notable variables for Lee County within this dimension include:

VARIABLE STRENGTH	FACTOR	LEE COUNTY VALUE	NC COUNTY AVERAGE VALUE
Strongest	Gini Coefficient (Income Inequality)	0.43	0.46
2nd Strongest	Percentage of Households with Income over \$200k	4.68%	5.28%
Weakest	Percentage of Population without Health Insurance	13.67%	11.23%

Education: 47.72

This component evaluates the quality of educational institutions and the educational attainment levels of the local population, which play a crucial role in developing a skilled and adaptable workforce. Lee County's performance on this dimension is average when compared to other North Carolina counties, ranking 50th in the state.

Notable variables for Lee County within this dimension include:

VARIABLE STRENGTH	FACTOR	LEE COUNTY VALUE	NC COUNTY AVERAGE VALUE
Top 10 in NC, Strongest	Dropout Rate	0.25%	1.65%
2nd Strongest	3rd Grade Reading Proficiency	44.4%	43.1%
Weakest	Teacher Attrition Rate	0.13	0.12

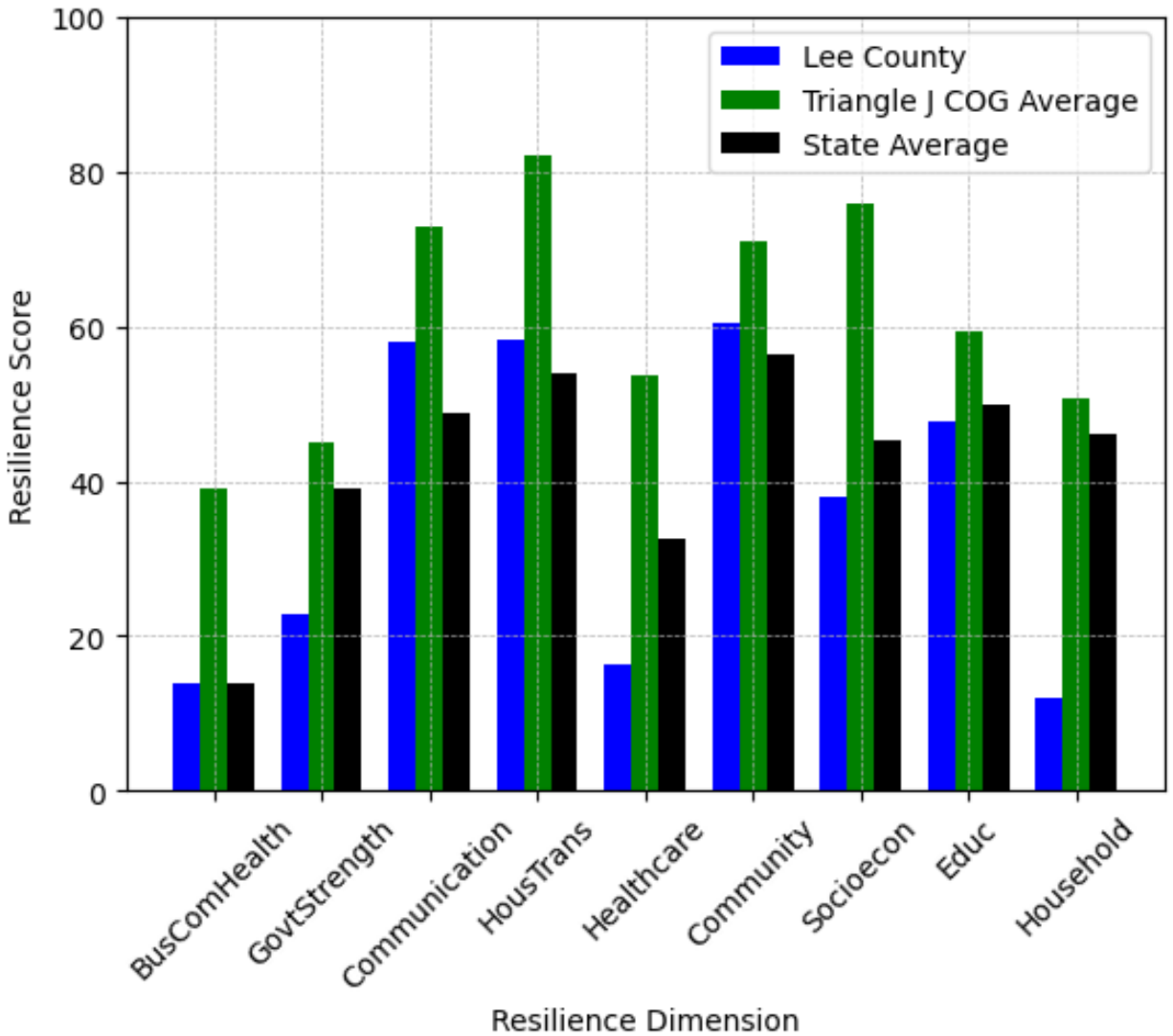
Household Characteristics: 11.98

This component examines factors such as the proportion of single-parent households, age distribution, and the proportion of individuals with disabilities, as these elements can influence a community's resilience and ability to recover from economic disruptions. Lee County's performance on this dimension is weak when compared to other North Carolina counties, ranking 97th in the state.

Notable variables for Lee County within this dimension include:

VARIABLE STRENGTH	FACTOR	LEE COUNTY VALUE	NC COUNTY AVERAGE VALUE
Strongest	Percentage of Population 65 and Older	16.76%	20.53%
2nd Strongest	Percentage of Population with a Disability	17.375%	16.566%
Bottom 10 in NC, Weakest	Percentage of Population with Limited English Proficiency	5.022%	1.454%

**Lee County's Resilience Dimension Scores Over Time
As Compared to the Region and State Averages**



Note: Resilience Scores are normalized from 1 to 100 with the most resilient county scoring 100. The Resilience Score is determined based on a county's performance relative to NC's other 99 counties.

Notable Trends in Resilience Indicators, 2017-2022

NOTE: The key trends in the this section are identified based on change rates of at least .15 standard deviations over at least 5 years. Variables are positively oriented such that a positive trend indicates improved performance (e.g., 'improvement' in property crime is a lower crime rate, while 'decline' in property crime indicates a higher crime rate).

Trends in the Business Community Health dimension:

Total Employment Level: **63** (5-year change rate = **0.24%**, from 26,177 to 26,240)

↓ Change in rank from 34 to 36 in NC

Average Weekly Wages: **187 dollars** (5-year change rate = **23.23%**, from 805 to 992)

↓ Change in rank from 21 to 26 in NC

Real GDP in Current Dollars: **76,431 dollars** (5-year change rate = **2.79%**, from 2,739,492 to 2,815,923)

↑ Change in rank from 36 to 34 in NC

Trends in the County Government Fiscal Strength dimension:

Adjusted Tax Base: **9,708 dollars** (5-year change rate = **11.18%**, from 86,848 to 96,556)

↓ Change in rank from 52 to 59 in NC

County Sales Tax: **7,596,311 dollars** (5-year change rate = **54.95%**, from 13,823,289 to 21,419,600)

↓ Change in rank from 39 to 41 in NC

Trends in the Housing & Transportation dimension:

Ratio of Average Estimated Home Value to Median Income : **1.35** (5-year change rate = **21.21%**, from 6.38 to 7.73)

↑ Change in rank from 51 to 46 in NC

Average Available Rent Money less the Average HUD Fair Market Rent: **72.4 dollars** (5-year change rate = **10.4%**, from 696.3 to 768.7)

↓ Change in rank from 13 to 56 in NC

Trends in the Healthcare dimension:

Opioid Deaths per 100,000 Residents: **23.5** (5-year change rate = **67.53%**, from 34.8 to 58.3)

↓ Change in rank from 83 to 88 in NC

Nurses per 10,000 Residents: **-53.66** (5-year change rate = **-22.11%**, from 242.65 to 188.99)

↓ Change in rank from 34 to 44 in NC

Physicians per 10,000 Residents: **-0.16** (5-year change rate = **-1.1%**, from 14.49 to 14.33)

↓ Change in rank from 43 to 46 in NC

Trends in the Community Cohesion dimension:

Violent Crimes per 10,000 Residents: **0.22** (4-year change rate = **14.73%**, from 1.49 to 1.71)

↓ Change in rank from 24 to 29 in NC

Property Crimes per 10,000 Residents: **0.2** (4-year change rate = **1.34%**, from 14.81 to 15)

↓ Change in rank from 32 to 54 in NC

Nonprofits Organizations per 1,000 Residents: **0.6** (5-year change rate = **56.7%**, from 1.05 to 1.65)

↑ Change in rank from 94 to 84 in NC

Trends in the Socioeconomics dimension:

Unemployment Rate (Q4): **-0.7 percent** (5-year change rate = **-13.99%**, from 4.8 to 4.1)

↓ Change in rank from 69 to 73 in NC

Median Household Income: **8,200 dollars** (5-year change rate = **14.11%**, from 58,100 to 66,300)

↓ Change in rank from 24 to 57 in NC

Trends in the Education dimension:

Graduation Percentage: **-2.2 percent** (5-year change rate = **-2.44%**, from 90.1 to 87.9)

↓ Change in rank from 31 to 54 in NC

Dropout Rate: **-2.68 percent** (5-year change rate = **-91.56%**, from 2.93 to 0.25)

↑ Change in rank from 78 to 6 in NC

3rd Grade Reading Proficiency: **-8.9 percent** (5-year change rate = **-16.7%**, from 53.3 to 44.4)

↑ Change in rank from 54 to 47 in NC

Data Advisements:

- Availability of Broadband Services is not available for 2022 and was excluded from calculating this county's dimension and resilience score.
- Adoption Rate of Broadband Services is not available for 2022 and was excluded from calculating this county's dimension and resilience score.