

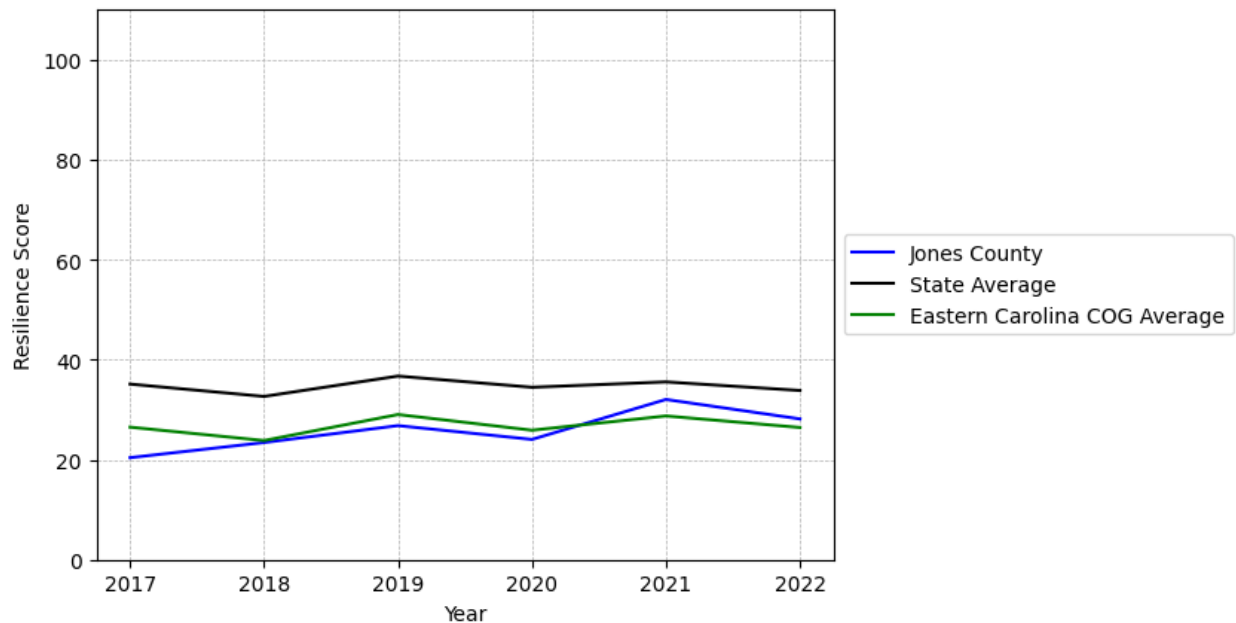
# Jones County Summary

---

**Resilience Score: 28.15**

In 2022, Jones County achieved a Resilience Score of 28.15, which is average as compared to the North Carolina State average.

**Jones County's Resilience Score Over Time  
As Compared to the Region and State Averages**



*Note: Resilience Scores are normalized from 1 to 100 with the most resilient county scoring 100. The Resilience Score is determined based on a county's performance relative to NC's other 99 counties.*

Jones County's Resilience Score is comprised of 9 distinct dimensions of resilience. Below are Jones County's scores for 2022 on those 9 dimensions, and their rank relative to other North Carolina counties.

### Business Community Health: 12.49

This component examines the strength and diversity of the local business community, including factors such as the number of businesses, employment levels, and industry diversity. Jones County's performance on this dimension is average when compared to other North Carolina counties, ranking 44th in the state.

Notable variables for Jones County within this dimension include:

VARIABLE STRENGTH	FACTOR	JONES COUNTY VALUE	NC COUNTY AVERAGE VALUE
Top 10 in NC, Strongest	Private Sector Diversity	0.586	0.28
2nd Strongest	Ratio of Available Child Care Slots to Number of Children under Five	0.56	0.59
Bottom 10 in NC	Real GDP in Current Dollars	\$219,935	\$6,092,555
Bottom 10 in NC, Weakest	Total Employment Level	1,677	45,758

---

### County Government Fiscal Strength: 9.37

This component looks at the financial health of local governments, including their ability to generate revenue, manage debt, and maintain adequate reserves to weather economic downturns. Jones County's performance on this dimension is weak when compared to other North Carolina counties, ranking 94th in the state.

Notable variables for Jones County within this dimension include:

VARIABLE STRENGTH	FACTOR	JONES COUNTY VALUE	NC COUNTY AVERAGE VALUE
Strongest	Capital Assets Condition Ratio of County Government	0.53	0.51
2nd Strongest	Debt Service Ratio of County Government	0.07	0.07
Bottom 10 in NC	Quick Ratio of County Government	4.23	16.4
Bottom 10 in NC	Operations Ratio of County Government	0.97	1.11
Bottom 10 in NC, Weakest	County Sales Tax	\$1,985,642	\$31,151,902

---

### Communication: 45.78

This component assesses the availability and quality of communication infrastructure, such as broadband internet access, which is crucial for businesses and residents to stay connected and resilient during disruptions. Jones County's performance on this dimension is average when compared to other North Carolina counties, ranking 60th in the state.

Notable variables for Jones County within this dimension include:

VARIABLE STRENGTH	FACTOR	JONES COUNTY VALUE	NC COUNTY AVERAGE VALUE
Strongest	Broadband Availability	0.73	0.6
2nd Strongest	Local High-Speed Mobile Data Availability	0.65	0.66
Weakest	Percentage of Population without Smartphones	22.94%	17.22%

---

### Housing & Transportation: 51.76

This component evaluates the accessibility and affordability of housing, as well as the availability of reliable transportation options, which are essential for a resilient workforce and economy. Jones County's performance on this dimension is average when compared to other North Carolina counties, ranking 64th in the state.

Notable variables for Jones County within this dimension include:

VARIABLE STRENGTH	FACTOR	JONES COUNTY VALUE	NC COUNTY AVERAGE VALUE
Strongest	Percentage of People Driving Alone to Work	84.36%	86.36%
2nd Strongest	Percentage of Households with More Residents than Rooms	1.39%	2.1%
Weakest	Ratio of Average Estimated Home Value to Median Income	30.25	13.67

---

### Healthcare: 23.69

The healthcare component examines the availability and quality of healthcare facilities, services, and professionals, which are critical for maintaining a healthy and productive workforce. Jones County's performance on this dimension is average when compared to other North Carolina counties, ranking 62nd in the state.

Notable variables for Jones County within this dimension include:

VARIABLE STRENGTH	FACTOR	JONES COUNTY VALUE	NC COUNTY AVERAGE VALUE
<b>Strongest</b>	Nursing Home Beds per 1,000 Residents of Age 65+	36.82	27.53
<b>2nd Strongest</b>	Mental Health Professionals per 10,000 Residents	8.69	6.6
<b>Bottom 10 in NC, Weakest</b>	Opioid Deaths per 100,000 Residents	63.7	38.73

### Community Cohesion: 66.27

This component looks at the strength of social networks, community engagement, and the ability of residents to work together to address challenges and support one another during times of adversity. Jones County's performance on this dimension is fairly strong when compared to other North Carolina counties, ranking 28th in the state.

Notable variables for Jones County within this dimension include:

VARIABLE STRENGTH	FACTOR	JONES COUNTY VALUE	NC COUNTY AVERAGE VALUE
<b>Top 10 in NC, Strongest</b>	Property Crimes per 10,000 Residents	5.28	15.74
<b>2nd Strongest</b>	Violent Crimes per 10,000 Residents	1.32	3.07
<b>Weakest</b>	Yearly Population Change Percentage	0.165%	0.906%

### Socioeconomics: 35.72

This component considers factors such as income levels, poverty rates, and inequality, which can impact a community's ability to withstand and recover from economic shocks. Jones County's performance on this dimension is average when compared to other North Carolina counties, ranking 68th in the state.

Notable variables for Jones County within this dimension include:

VARIABLE STRENGTH	FACTOR	JONES COUNTY VALUE	NC COUNTY AVERAGE VALUE
<b>Strongest</b>	Gini Coefficient (Income Inequality)	0.45	0.46

<b>2nd Strongest</b>	Percentage of Households Spending more than 30% Income on Housing	22.83%	24.53%
<b>Weakest</b>	Population 25+ with at least a Bachelor's Degree	15.74%	24.4%

### Education: 44.98

This component evaluates the quality of educational institutions and the educational attainment levels of the local population, which play a crucial role in developing a skilled and adaptable workforce. Jones County's performance on this dimension is average when compared to other North Carolina counties, ranking 54th in the state.

Notable variables for Jones County within this dimension include:

VARIABLE STRENGTH	FACTOR	JONES COUNTY VALUE	NC COUNTY AVERAGE VALUE
<b>Top 10 in NC, Strongest</b>	Student to Teacher Ratio	11	14
<b>2nd Strongest</b>	Graduation Percentage	89.3%	88.03%
<b>Bottom 10 in NC, Weakest</b>	Dropout Rate	3.41%	1.65%

### Household Characteristics: 50.75

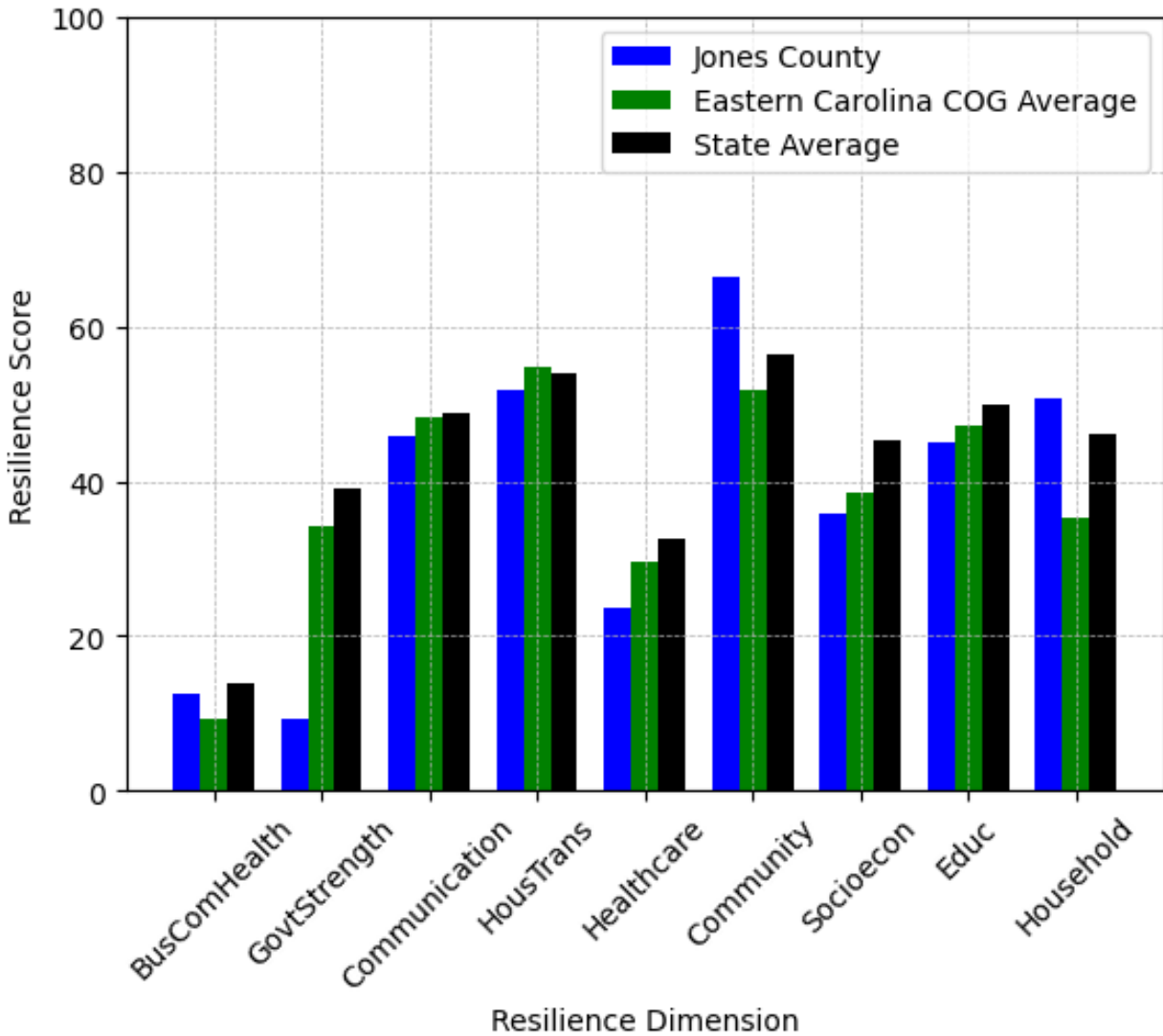
This component examines factors such as the proportion of single-parent households, age distribution, and the proportion of individuals with disabilities, as these elements can influence a community's resilience and ability to recover from economic disruptions. Jones County's performance on this dimension is average when compared to other North Carolina counties, ranking 27th in the state.

Notable variables for Jones County within this dimension include:

VARIABLE STRENGTH	FACTOR	JONES COUNTY VALUE	NC COUNTY AVERAGE VALUE
<b>Top 10 in NC, Strongest</b>	Percentage of Population with Limited English Proficiency	0.054%	1.454%
<b>2nd Strongest</b>	Percentage of Single Parent Households	28.167%	36.132%
<b>Weakest</b>	Percentage of Population with a Disability	20.544%	16.566%



## Jones County's Resilience Dimension Scores Over Time As Compared to the Region and State Averages



*Note: Resilience Scores are normalized from 1 to 100 with the most resilient county scoring 100. The Resilience Score is determined based on a county's performance relative to NC's other 99 counties.*

## **Notable Trends in Resilience Indicators, 2017-2022**

*NOTE: The key trends in the this section are identified based on change rates of at least .15 standard deviations over at least 5 years. Variables are positively oriented such that a positive trend indicates improved performance (e.g., 'improvement' in property crime is a lower crime rate, while 'decline' in property crime indicates a higher crime rate).*

### **Trends in the Business Community Health dimension:**

Average Weekly Wages: **144 dollars** (5-year change rate = **19.97%**, from 721 to 865)

↓ Change in rank from 49 to 74 in NC

Real GDP in Current Dollars: **14,352 dollars** (5-year change rate = **6.98%**, from 205,583 to 219,935)

↑ Change in rank from 96 to 95 in NC

### **Trends in the County Government Fiscal Strength dimension:**

Adjusted Tax Base: **18,215 dollars** (5-year change rate = **23.45%**, from 77,671 to 95,886)

↑ Change in rank from 62 to 60 in NC

County Sales Tax: **706,365 dollars** (5-year change rate = **55.22%**, from 1,279,277 to 1,985,642)

→ No change in rank

### **Trends in the Housing & Transportation dimension:**

Ratio of Average Estimated Home Value to Median Income : **7.9** (5-year change rate = **35.35%**, from 22.35 to 30.25)

↓ Change in rank from 88 to 89 in NC

Average Available Rent Money less the Average HUD Fair Market Rent: **154.4 dollars** (5-year change rate = **29.96%**, from 515.4 to 669.8)

↓ Change in rank from 52 to 67 in NC

### **Trends in the Healthcare dimension:**

Opioid Deaths per 100,000 Residents: **1.2** (5-year change rate = **1.92%**, from 62.5 to 63.7)



↑ Change in rank from 100 to 93 in NC

Nurses per 10,000 Residents: **17.52** (5-year change rate = **24.55%**, from 71.36 to 88.88)

↑ Change in rank from 88 to 80 in NC

Physicians per 10,000 Residents: **-2.71** (5-year change rate = **-18.47%**, from 14.67 to 11.96)

↓ Change in rank from 41 to 52 in NC

Mental Health Professionals per 10,000 Residents: **4.5** (5-year change rate = **107.4%**, from 4.19 to 8.69)

↑ Change in rank from 70 to 23 in NC

**Trends in the Community Cohesion dimension:**

Violent Crimes per 10,000 Residents: **0.9** (4-year change rate = **213.86%**, from 0.42 to 1.32)

↓ Change in rank from 7 to 20 in NC

Property Crimes per 10,000 Residents: **3.91** (4-year change rate = **286.29%**, from 1.37 to 5.28)

↓ Change in rank from 5 to 8 in NC

Nonprofits Organizations per 1,000 Residents: **0.37** (5-year change rate = **14.66%**, from 2.53 to 2.9)

↑ Change in rank from 61 to 58 in NC

**Trends in the Socioeconomics dimension:**

Unemployment Rate (Q4): **-0.8 percent** (5-year change rate = **-18.46%**, from 4.3 to 3.5)

↑ Change in rank from 53 to 50 in NC

Median Household Income: **8,000 dollars** (5-year change rate = **16.26%**, from 49,200 to 57,200)

↓ Change in rank from 63 to 78 in NC

**Trends in the Education dimension:**

Graduation Percentage: **-3.9 percent** (5-year change rate = **-4.18%**, from 93.2 to 89.3)

↓ Change in rank from 7 to 39 in NC

Dropout Rate: **3.11 percent** (5-year change rate = **1,029.21%**, from 0.3 to 3.41)

↓ Change in rank from 1 to 97 in NC

Student to Teacher Ratio: **-1** (4-year change rate = **-7.36%**, from 12 to 11)

↑ Change in rank from 6 to 3 in NC

3rd Grade Reading Proficiency: **-21.1 percent** (5-year change rate = **-32.26%**, from 65.4 to 44.3)

↓ Change in rank from 7 to 48 in NC

**Data Advisements:**

- This county has a population under 20,000 residents according to the US Census Bureau; in low population areas, some variable estimates can be less stable and more sensitive to changes.
- Availability of Broadband Services is not available for 2022 and was excluded from calculating this county's dimension and resilience score.
- Adoption Rate of Broadband Services is not available for 2022 and was excluded from calculating this county's dimension and resilience score.