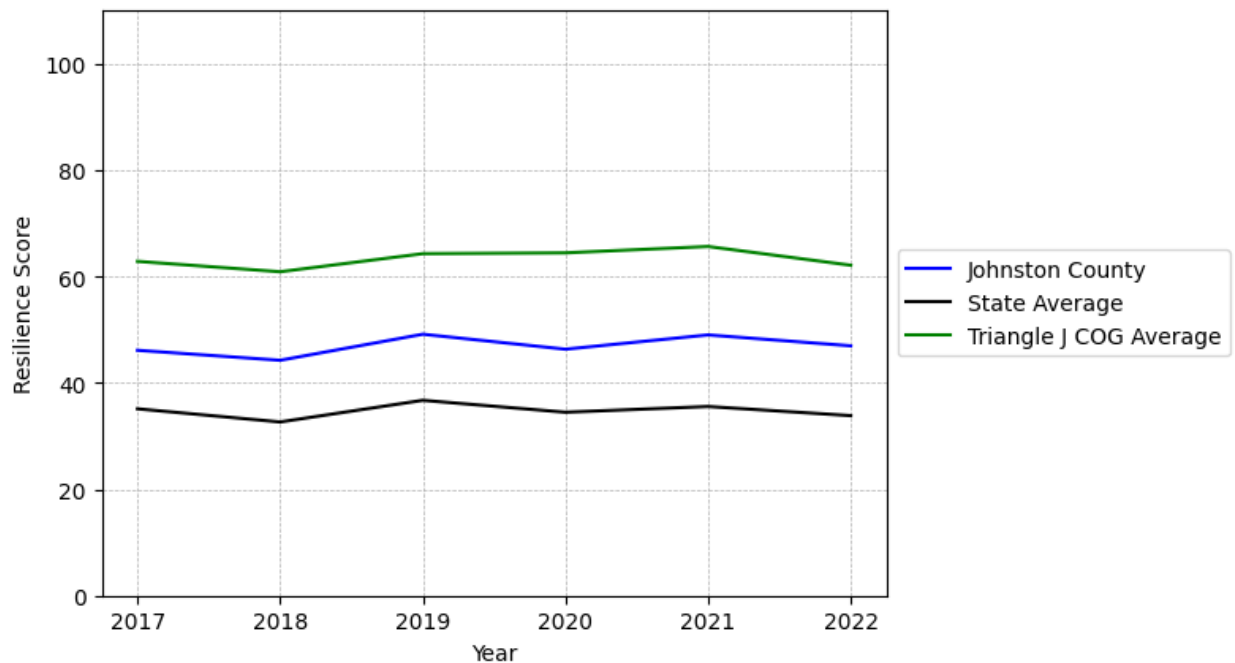


Johnston County Summary

Resilience Score: 46.96

In 2022, Johnston County achieved a Resilience Score of 46.96, which is fairly strong as compared to the North Carolina State average.

**Johnston County's Resilience Score Over Time
As Compared to the Region and State Averages**



Note: Resilience Scores are normalized from 1 to 100 with the most resilient county scoring 100. The Resilience Score is determined based on a county's performance relative to NC's other 99 counties.

Johnston County's Resilience Score is comprised of 9 distinct dimensions of resilience. Below are Johnston County's scores for 2022 on those 9 dimensions, and their rank relative to other North Carolina counties.

Business Community Health: 13.33

This component examines the strength and diversity of the local business community, including factors such as the number of businesses, employment levels, and industry diversity. Johnston County's performance on this dimension is average when compared to other North Carolina counties, ranking 36th in the state.

Notable variables for Johnston County within this dimension include:

VARIABLE STRENGTH	FACTOR	JOHNSTON COUNTY VALUE	NC COUNTY AVERAGE VALUE
Strongest	Total Employment Level	57,963	45,758
2nd Strongest	Real GDP in Current Dollars	\$7,726,394	\$6,092,555
Weakest	Private Sector Diversity	0.11	0.28

County Government Fiscal Strength: 54.4

This component looks at the financial health of local governments, including their ability to generate revenue, manage debt, and maintain adequate reserves to weather economic downturns. Johnston County's performance on this dimension is fairly strong when compared to other North Carolina counties, ranking 28th in the state.

Notable variables for Johnston County within this dimension include:

VARIABLE STRENGTH	FACTOR	JOHNSTON COUNTY VALUE	NC COUNTY AVERAGE VALUE
Top 10 in NC, Strongest	Quick Ratio of County Government	46.32	16.4
2nd Strongest	County Sales Tax	\$61,191,544	\$31,151,902
Bottom 10 in NC, Weakest	Debt Service Ratio of County Government	0.15	0.07

Communication: 65.38

This component assesses the availability and quality of communication infrastructure, such as broadband internet access, which is crucial for businesses and residents to stay connected and resilient during disruptions. Johnston County's performance on this dimension is fairly strong when compared to other North Carolina counties, ranking 25th in the state.

Notable variables for Johnston County within this dimension include:

VARIABLE	FACTOR	JOHNSTON COUNTY	NC COUNTY
----------	--------	-----------------	-----------

STRENGTH		VALUE	AVERAGE VALUE
Strongest	Percentage of Population without Smartphones	10.97%	17.22%
2nd Strongest	Local High-Speed Mobile Data Availability	0.8	0.66
Weakest	Broadband Availability	0.6	0.6

Housing & Transportation: 81.23

This component evaluates the accessibility and affordability of housing, as well as the availability of reliable transportation options, which are essential for a resilient workforce and economy. Johnston County's performance on this dimension is strong when compared to other North Carolina counties, ranking 14th in the state.

Notable variables for Johnston County within this dimension include:

VARIABLE STRENGTH	FACTOR	JOHNSTON COUNTY VALUE	NC COUNTY AVERAGE VALUE
Top 10 in NC, Strongest	Average Available Rent Money less the Average HUD Fair Market Rent	\$1,385.9	\$799.87
Top 10 in NC, 2nd Strongest	Percentage of Owner-Occupied Homes	71.33%	57.87%
Top 10 in NC	Percentage of Homes Built Before 1980	23.63%	40.9%
Bottom 10 in NC, Weakest	Percentage of People with Commute Times Over 45 Minutes	29.52%	16.69%

Healthcare: 21.62

The healthcare component examines the availability and quality of healthcare facilities, services, and professionals, which are critical for maintaining a healthy and productive workforce. Johnston County's performance on this dimension is average when compared to other North Carolina counties, ranking 67th in the state.

Notable variables for Johnston County within this dimension include:

VARIABLE STRENGTH	FACTOR	JOHNSTON COUNTY VALUE	NC COUNTY AVERAGE VALUE
Strongest	Opioid Deaths per 100,000 Residents	30.6	38.73
2nd Strongest	Nurses per 10,000 Residents	201.2	262.64

Weakest	Mental Health Professionals per 10,000 Residents	3.52	6.6
----------------	--	------	-----

Community Cohesion: 74.49

This component looks at the strength of social networks, community engagement, and the ability of residents to work together to address challenges and support one another during times of adversity. Johnston County's performance on this dimension is strong when compared to other North Carolina counties, ranking 14th in the state.

Notable variables for Johnston County within this dimension include:

VARIABLE STRENGTH	FACTOR	JOHNSTON COUNTY VALUE	NC COUNTY AVERAGE VALUE
Top 10 in NC, Strongest	Yearly Population Change Percentage	3.906%	0.906%
2nd Strongest	Violent Crimes per 10,000 Residents	1.43	3.07
Weakest	Nonprofits Organizations per 1,000 Residents	2.76	3.17

Socioeconomics: 71.49

This component considers factors such as income levels, poverty rates, and inequality, which can impact a community's ability to withstand and recover from economic shocks. Johnston County's performance on this dimension is strong when compared to other North Carolina counties, ranking 13th in the state.

Notable variables for Johnston County within this dimension include:

VARIABLE STRENGTH	FACTOR	JOHNSTON COUNTY VALUE	NC COUNTY AVERAGE VALUE
Top 10 in NC, Strongest	Median Household Income	\$110,1	\$70,088
2nd Strongest	Gini Coefficient (Income Inequality)	0.42	0.46
Weakest	Percentage of Population without Health Insurance	11.17%	11.23%

Education: 45.77

This component evaluates the quality of educational institutions and the educational attainment levels of the local population, which play a crucial role in developing a skilled and adaptable workforce. Johnston County's performance on this dimension is average when compared to other North Carolina counties, ranking 52nd in the state.

Notable variables for Johnston County within this dimension include:

VARIABLE STRENGTH	FACTOR	JOHNSTON COUNTY VALUE	NC COUNTY AVERAGE VALUE
Strongest	Postsecondary Enrollment Percentage	32.02%	25.48%
2nd Strongest	Graduation Percentage	91.9%	88.03%
Weakest	Student to Teacher Ratio	16	14

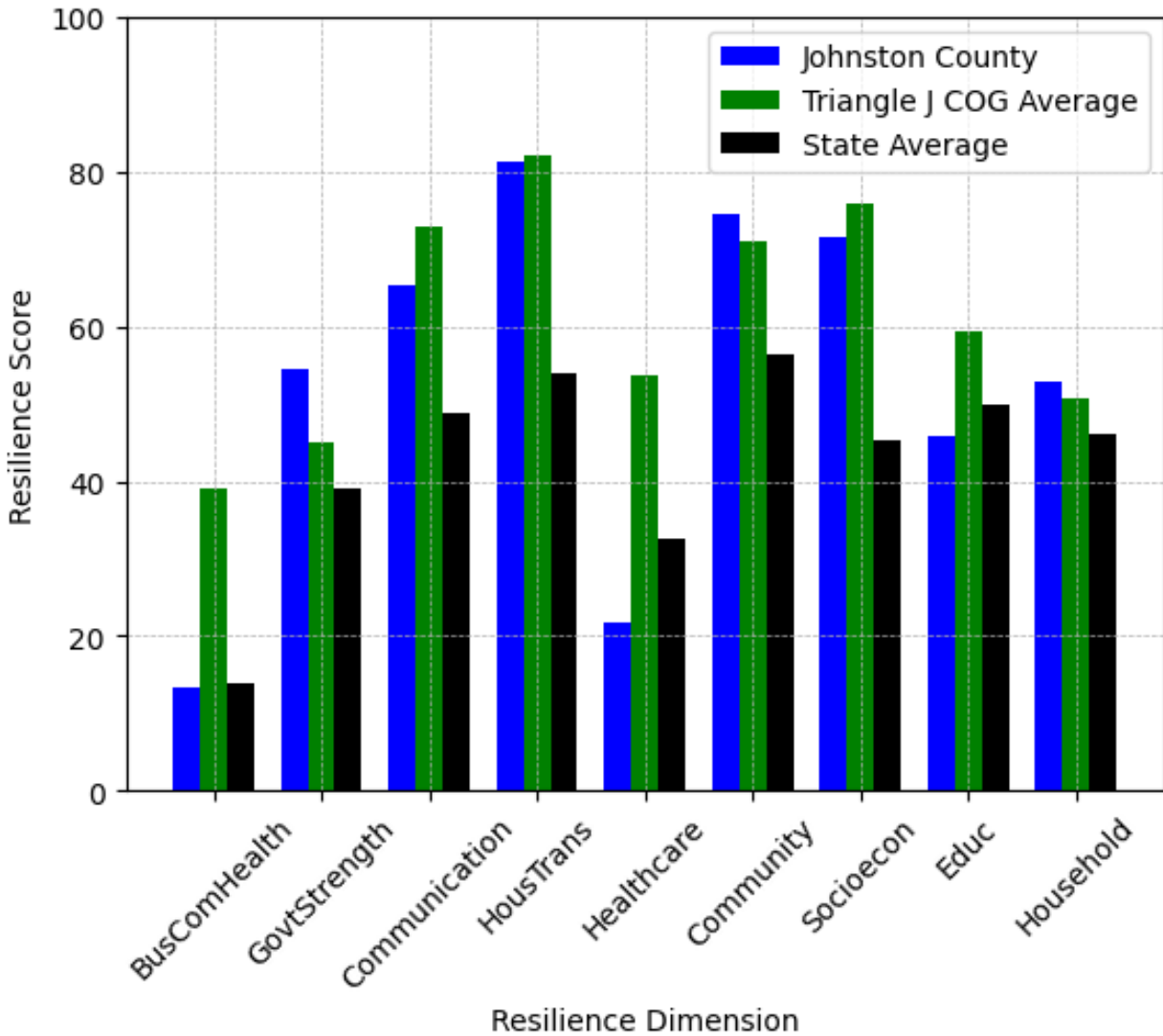
Household Characteristics: 52.87

This component examines factors such as the proportion of single-parent households, age distribution, and the proportion of individuals with disabilities, as these elements can influence a community's resilience and ability to recover from economic disruptions. Johnston County's performance on this dimension is fairly strong when compared to other North Carolina counties, ranking 23rd in the state.

Notable variables for Johnston County within this dimension include:

VARIABLE STRENGTH	FACTOR	JOHNSTON COUNTY VALUE	NC COUNTY AVERAGE VALUE
Top 10 in NC, Strongest	Percentage of Population 65 and Older	13.57%	20.53%
2nd Strongest	Percentage of Single Parent Households	24.69%	36.132%
Bottom 10 in NC, Weakest	Percentage of Population 17 and Younger	24.92%	20.37%

Johnston County's Resilience Dimension Scores Over Time As Compared to the Region and State Averages



Note: Resilience Scores are normalized from 1 to 100 with the most resilient county scoring 100. The Resilience Score is determined based on a county's performance relative to NC's other 99 counties.

Notable Trends in Resilience Indicators, 2017-2022

NOTE: The key trends in the this section are identified based on change rates of at least .15 standard deviations over at least 5 years. Variables are positively oriented such that a positive trend indicates improved performance (e.g., 'improvement' in property crime is a lower crime rate, while 'decline' in property crime indicates a higher crime rate).

Trends in the Business Community Health dimension:

Total Employment Level: **9,585** (5-year change rate = **19.81%**, from 48,377 to 57,963)

↑ Change in rank from 19 to 17 in NC

Average Weekly Wages: **202 dollars** (5-year change rate = **25.41%**, from 795 to 997)

↑ Change in rank from 25 to 24 in NC

Real GDP in Current Dollars: **608,125 dollars** (5-year change rate = **8.54%**, from 7,118,269 to 7,726,394)

→ No change in rank

Trends in the County Government Fiscal Strength dimension:

Adjusted Tax Base: **18,659 dollars** (5-year change rate = **23.9%**, from 78,078 to 96,737)

↑ Change in rank from 60 to 58 in NC

County Sales Tax: **24,994,272 dollars** (5-year change rate = **69.05%**, from 36,197,272 to 61,191,544)

↑ Change in rank from 15 to 13 in NC

Trends in the Housing & Transportation dimension:

Ratio of Average Estimated Home Value to Median Income : **0.72** (5-year change rate = **31.25%**, from 2.3 to 3.02)

↓ Change in rank from 13 to 15 in NC

Average Available Rent Money less the Average HUD Fair Market Rent: **467.9 dollars** (5-year change rate = **50.97%**, from 918 to 1,385.9)

→ No change in rank

Trends in the Healthcare dimension:

Opioid Deaths per 100,000 Residents: **11.3** (5-year change rate = **58.55%**, from 19.3 to 30.6)

↑ Change in rank from 37 to 33 in NC

Nurses per 10,000 Residents: **-19.65** (5-year change rate = **-8.9%**, from 220.85 to 201.2)

↓ Change in rank from 40 to 41 in NC

Mental Health Professionals per 10,000 Residents: **0.38** (5-year change rate = **12.1%**, from 3.14 to 3.52)

↑ Change in rank from 83 to 81 in NC

Trends in the Community Cohesion dimension:

Violent Crimes per 10,000 Residents: **-0.45** (4-year change rate = **-23.84%**, from 1.87 to 1.43)

↑ Change in rank from 42 to 25 in NC

Property Crimes per 10,000 Residents: **-1.94** (4-year change rate = **-13.37%**, from 14.53 to 12.59)

↓ Change in rank from 30 to 35 in NC

Nonprofits Organizations per 1,000 Residents: **0.67** (5-year change rate = **32.1%**, from 2.09 to 2.76)

↑ Change in rank from 74 to 59 in NC

Trends in the Socioeconomics dimension:

Unemployment Rate (Q4): **-0.7 percent** (5-year change rate = **-17.24%**, from 3.9 to 3.2)

↑ Change in rank from 19 to 18 in NC

Median Household Income: **29,900 dollars** (5-year change rate = **37.28%**, from 80,200 to 110,100)

→ No change in rank

Trends in the Education dimension:

3rd Grade Reading Proficiency: **-5.6 percent** (5-year change rate = **-11%**, from 50.9 to 45.3)

↑ Change in rank from 65 to 42 in NC

Data Advisements:

- Availability of Broadband Services is not available for 2022 and was excluded from calculating this county's dimension and resilience score.
- Adoption Rate of Broadband Services is not available for 2022 and was excluded from calculating this county's dimension and resilience score.