

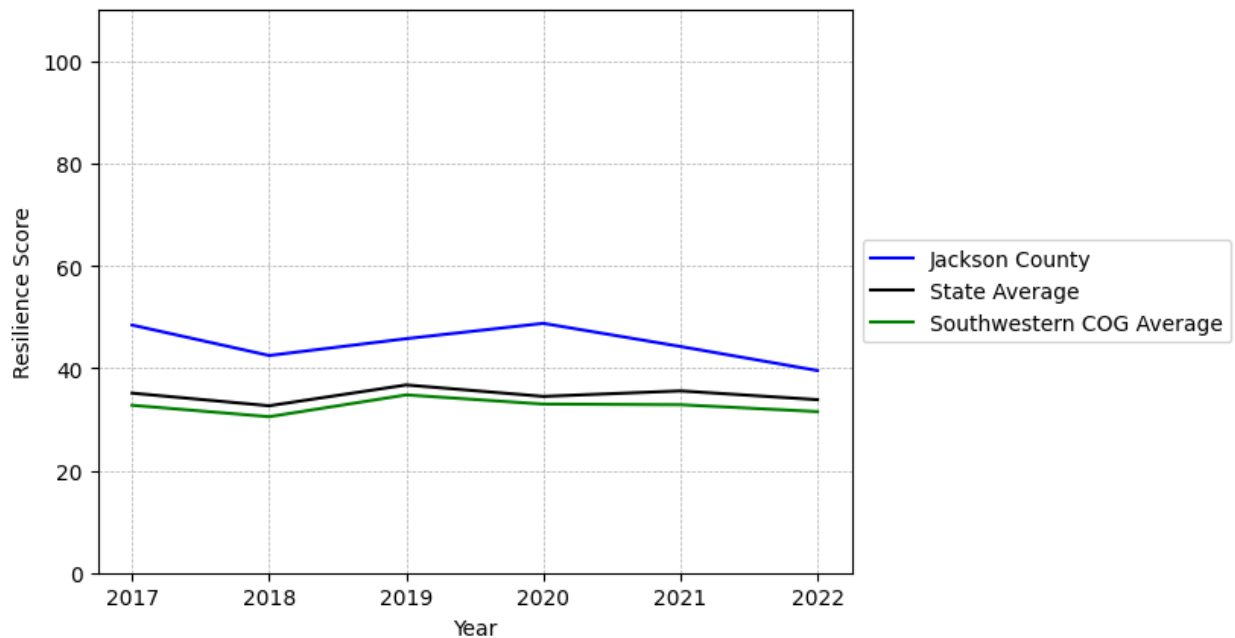
# Jackson County Summary

---

**Resilience Score: 39.53**

In 2022, Jackson County achieved a Resilience Score of 39.53, which is average as compared to the North Carolina State average.

**Jackson County's Resilience Score Over Time  
As Compared to the Region and State Averages**



*Note: Resilience Scores are normalized from 1 to 100 with the most resilient county scoring 100. The Resilience Score is determined based on a county's performance relative to NC's other 99 counties.*

Jackson County's Resilience Score is comprised of 9 distinct dimensions of resilience. Below are Jackson County's scores for 2022 on those 9 dimensions, and their rank relative to other North Carolina counties.

### **Business Community Health: 6.66**

This component examines the strength and diversity of the local business community, including factors such as the number of businesses, employment levels, and industry diversity. Jackson County's performance on this dimension is fairly weak when compared to other North Carolina counties, ranking 81st in the state.

Notable variables for Jackson County within this dimension include:

<b>VARIABLE STRENGTH</b>	<b>FACTOR</b>	<b>JACKSON COUNTY VALUE</b>	<b>NC COUNTY AVERAGE VALUE</b>
<b>Strongest</b>	Percentage of Companies in Science, Engineering, & Technology Industries	5.92%	6.13%
<b>2nd Strongest</b>	Real GDP in Current Dollars	\$1,629,092	\$6,092,555
<b>Weakest</b>	Science, Engineering, & Technology Industries Employment Percentage	0.52%	1.79%

---

### **County Government Fiscal Strength: 64.17**

This component looks at the financial health of local governments, including their ability to generate revenue, manage debt, and maintain adequate reserves to weather economic downturns. Jackson County's performance on this dimension is fairly strong when compared to other North Carolina counties, ranking 15th in the state.

Notable variables for Jackson County within this dimension include:

<b>VARIABLE STRENGTH</b>	<b>FACTOR</b>	<b>JACKSON COUNTY VALUE</b>	<b>NC COUNTY AVERAGE VALUE</b>
<b>Top 10 in NC, Strongest</b>	Adjusted Tax Base	\$224,746	\$124,092
<b>Top 10 in NC, 2nd Strongest</b>	Dependency Ratio of County Government	0.1	0.16
<b>Weakest</b>	Quick Ratio of County Government	7.86	16.4

---

### **Communication: 35.2**

This component assesses the availability and quality of communication infrastructure, such as broadband internet access, which is crucial for businesses and residents to stay connected and resilient during disruptions. Jackson County's performance on this dimension is fairly weak when compared to other North Carolina counties, ranking 81st in the state.

Notable variables for Jackson County within this dimension include:

VARIABLE STRENGTH	FACTOR	JACKSON COUNTY VALUE	NC COUNTY AVERAGE VALUE
<b>Strongest</b>	Percentage of Population without Smartphones	11.79%	17.22%
<b>2nd Strongest</b>	Local High-Speed Mobile Data Availability	0.44	0.66
<b>Bottom 10 in NC, Weakest</b>	Broadband Availability	0.31	0.6

### **Housing & Transportation: 57.56**

This component evaluates the accessibility and affordability of housing, as well as the availability of reliable transportation options, which are essential for a resilient workforce and economy. Jackson County's performance on this dimension is average when compared to other North Carolina counties, ranking 55th in the state.

Notable variables for Jackson County within this dimension include:

VARIABLE STRENGTH	FACTOR	JACKSON COUNTY VALUE	NC COUNTY AVERAGE VALUE
<b>Top 10 in NC, Strongest</b>	Percentage of People with Commute Times Over 45 Minutes	9.23%	16.69%
<b>2nd Strongest</b>	Percentage of Homes Built Before 1980	33.24%	40.9%
<b>Bottom 10 in NC, Weakest</b>	Percentage of Owner-Occupied Homes	40.81%	57.87%

### **Healthcare: 26.62**

The healthcare component examines the availability and quality of healthcare facilities, services, and professionals, which are critical for maintaining a healthy and productive workforce. Jackson County's performance on this dimension is average when compared to other North Carolina counties, ranking 47th in the state.

Notable variables for Jackson County within this dimension include:

VARIABLE STRENGTH	FACTOR	JACKSON COUNTY VALUE	NC COUNTY AVERAGE VALUE
<b>Strongest</b>	Mental Health Professionals per 10,000 Residents	10	6.6

<b>2nd Strongest</b>	Physicians per 10,000 Residents	18.15	16.05
<b>Weakest</b>	Nursing Home Beds per 1,000 Residents of Age 65+	21.51	27.53

### Community Cohesion: 60.73

This component looks at the strength of social networks, community engagement, and the ability of residents to work together to address challenges and support one another during times of adversity. Jackson County's performance on this dimension is average when compared to other North Carolina counties, ranking 44th in the state.

Notable variables for Jackson County within this dimension include:

VARIABLE STRENGTH	FACTOR	JACKSON COUNTY VALUE	NC COUNTY AVERAGE VALUE
<b>Top 10 in NC, Strongest</b>	Yearly Population Change Percentage	3.027%	0.906%
<b>2nd Strongest</b>	Property Crimes per 10,000 Residents	11.65	15.74
<b>Weakest</b>	Nonprofits Organizations per 1,000 Residents	1.86	3.17

### Socioeconomics: 40.14

This component considers factors such as income levels, poverty rates, and inequality, which can impact a community's ability to withstand and recover from economic shocks. Jackson County's performance on this dimension is average when compared to other North Carolina counties, ranking 59th in the state.

Notable variables for Jackson County within this dimension include:

VARIABLE STRENGTH	FACTOR	JACKSON COUNTY VALUE	NC COUNTY AVERAGE VALUE
<b>Strongest</b>	Population 25+ with at least a Bachelor's Degree	29.82%	24.4%
<b>2nd Strongest</b>	Percentage of Population without a High School Diploma	6.96%	9.05%
<b>Bottom 10 in NC, Weakest</b>	Percentage of Population without Health Insurance	15.09%	11.23%

---

**Education: 74.89**

This component evaluates the quality of educational institutions and the educational attainment levels of the local population, which play a crucial role in developing a skilled and adaptable workforce. Jackson County's performance on this dimension is strong when compared to other North Carolina counties, ranking 5th in the state.

Notable variables for Jackson County within this dimension include:

<b>VARIABLE STRENGTH</b>	<b>FACTOR</b>	<b>JACKSON COUNTY VALUE</b>	<b>NC COUNTY AVERAGE VALUE</b>
<b>Top 10 in NC, Strongest</b>	Postsecondary Enrollment Percentage	76.18%	25.48%
<b>Top 10 in NC, 2nd Strongest</b>	Local LEA Financial Resources (per ADM)	\$20,733	\$8,683
<b>Bottom 10 in NC, Weakest</b>	Teacher Attrition Rate	0.18	0.12

---

**Household Characteristics: 53.49**

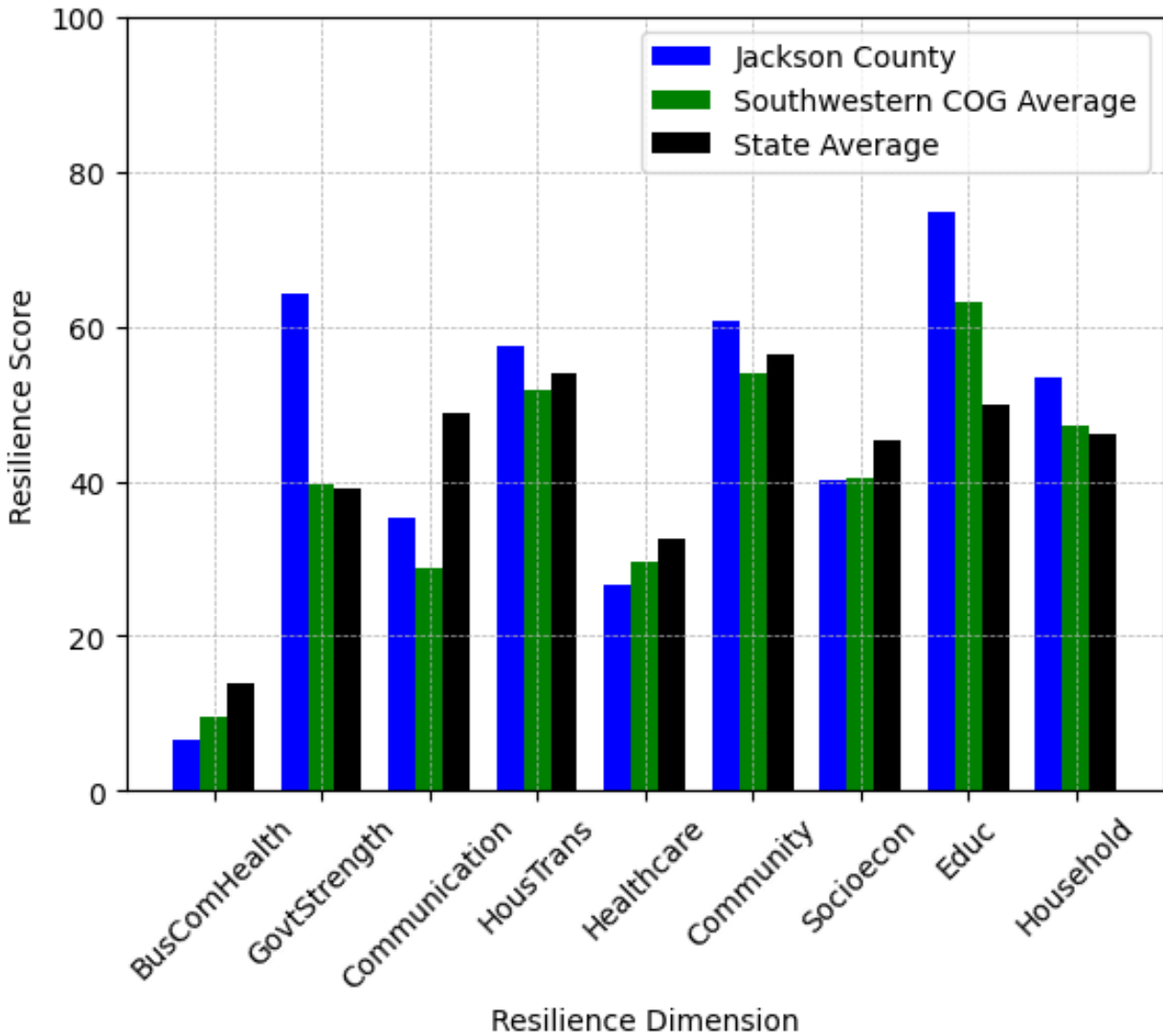
This component examines factors such as the proportion of single-parent households, age distribution, and the proportion of individuals with disabilities, as these elements can influence a community's resilience and ability to recover from economic disruptions. Jackson County's performance on this dimension is fairly strong when compared to other North Carolina counties, ranking 21st in the state.

Notable variables for Jackson County within this dimension include:

<b>VARIABLE STRENGTH</b>	<b>FACTOR</b>	<b>JACKSON COUNTY VALUE</b>	<b>NC COUNTY AVERAGE VALUE</b>
<b>Top 10 in NC, Strongest</b>	Percentage of Population 17 and Younger	16.64%	20.37%
<b>2nd Strongest</b>	Percentage of Population with a Disability	13.242%	16.566%
<b>Weakest</b>	Percentage of Single Parent Households	43.271%	36.132%

---

## Jackson County's Resilience Dimension Scores Over Time As Compared to the Region and State Averages



*Note: Resilience Scores are normalized from 1 to 100 with the most resilient county scoring 100. The Resilience Score is determined based on a county's performance relative to NC's other 99 counties.*

## **Notable Trends in Resilience Indicators, 2017-2022**

*NOTE: The key trends in the this section are identified based on change rates of at least .15 standard deviations over at least 5 years. Variables are positively oriented such that a positive trend indicates improved performance (e.g., 'improvement' in property crime is a lower crime rate, while 'decline' in property crime indicates a higher crime rate).*

### **Trends in the Business Community Health dimension:**

Total Employment Level: **802** (5-year change rate = **5.83%**, from 13,761 to 14,563)

↑ Change in rank from 57 to 56 in NC

Average Weekly Wages: **165 dollars** (5-year change rate = **22.7%**, from 727 to 892)

↓ Change in rank from 44 to 62 in NC

Real GDP in Current Dollars: **123,944 dollars** (5-year change rate = **8.23%**, from 1,505,148 to 1,629,092)

↑ Change in rank from 58 to 55 in NC

### **Trends in the County Government Fiscal Strength dimension:**

Adjusted Tax Base: **15,413 dollars** (5-year change rate = **7.36%**, from 209,333 to 224,746)

↑ Change in rank from 7 to 6 in NC

County Sales Tax: **8,881,554 dollars** (5-year change rate = **77.44%**, from 11,469,240 to 20,350,794)

↑ Change in rank from 46 to 43 in NC

### **Trends in the Housing & Transportation dimension:**

Ratio of Average Estimated Home Value to Median Income : **2.63** (5-year change rate = **24.1%**, from 10.93 to 13.56)

↑ Change in rank from 73 to 72 in NC

Average Available Rent Money less the Average HUD Fair Market Rent: **323.8 dollars** (5-year change rate = **56%**, from 578.2 to 902)

↓ Change in rank from 34 to 36 in NC

**Trends in the Healthcare dimension:**

Opioid Deaths per 100,000 Residents: **10.7** (5-year change rate = **35.31%**, from 30.3 to 41)

↑ Change in rank from 68 to 64 in NC

Nurses per 10,000 Residents: **-0.7** (5-year change rate = **-0.59%**, from 119.58 to 118.88)

↓ Change in rank from 66 to 69 in NC

Physicians per 10,000 Residents: **-3.07** (5-year change rate = **-14.47%**, from 21.22 to 18.15)

↓ Change in rank from 21 to 27 in NC

Mental Health Professionals per 10,000 Residents: **-0.26** (5-year change rate = **-2.53%**, from 10.26 to 10)

↓ Change in rank from 9 to 13 in NC

**Trends in the Community Cohesion dimension:**

Violent Crimes per 10,000 Residents: **0.57** (4-year change rate = **31.54%**, from 1.81 to 2.38)

↓ Change in rank from 40 to 44 in NC

Property Crimes per 10,000 Residents: **-12.78** (4-year change rate = **-52.32%**, from 24.43 to 11.65)

↑ Change in rank from 70 to 26 in NC

Nonprofits Organizations per 1,000 Residents: **-0.37** (5-year change rate = **-16.76%**, from 2.23 to 1.86)

↓ Change in rank from 70 to 80 in NC



**Trends in the Socioeconomics dimension:**

Unemployment Rate (Q4): **-0.6 percent** (5-year change rate = **-13.71%**, from 4.1 to 3.6)

↓ Change in rank from 42 to 53 in NC

Median Household Income: **18,200 dollars** (5-year change rate = **35.55%**, from 51,200 to 69,400)

↑ Change in rank from 55 to 49 in NC

**Trends in the Education dimension:**

Graduation Percentage: **4.5 percent** (5-year change rate = **5.07%**, from 88.7 to 93.2)

↑ Change in rank from 37 to 11 in NC

Dropout Rate: **-0.3 percent** (5-year change rate = **-19.52%**, from 1.54 to 1.24)

↓ Change in rank from 22 to 32 in NC

Student to Teacher Ratio: **-1** (4-year change rate = **-6.17%**, from 14 to 14)

↑ Change in rank from 39 to 33 in NC

3rd Grade Reading Proficiency: **-7.1 percent** (5-year change rate = **-14.12%**, from 50.3 to 43.2)

↑ Change in rank from 68 to 54 in NC

**Data Advisements:**

- Availability of Broadband Services is not available for 2022 and was excluded from calculating this county's dimension and resilience score.
- Adoption Rate of Broadband Services is not available for 2022 and was excluded from calculating this county's dimension and resilience score.