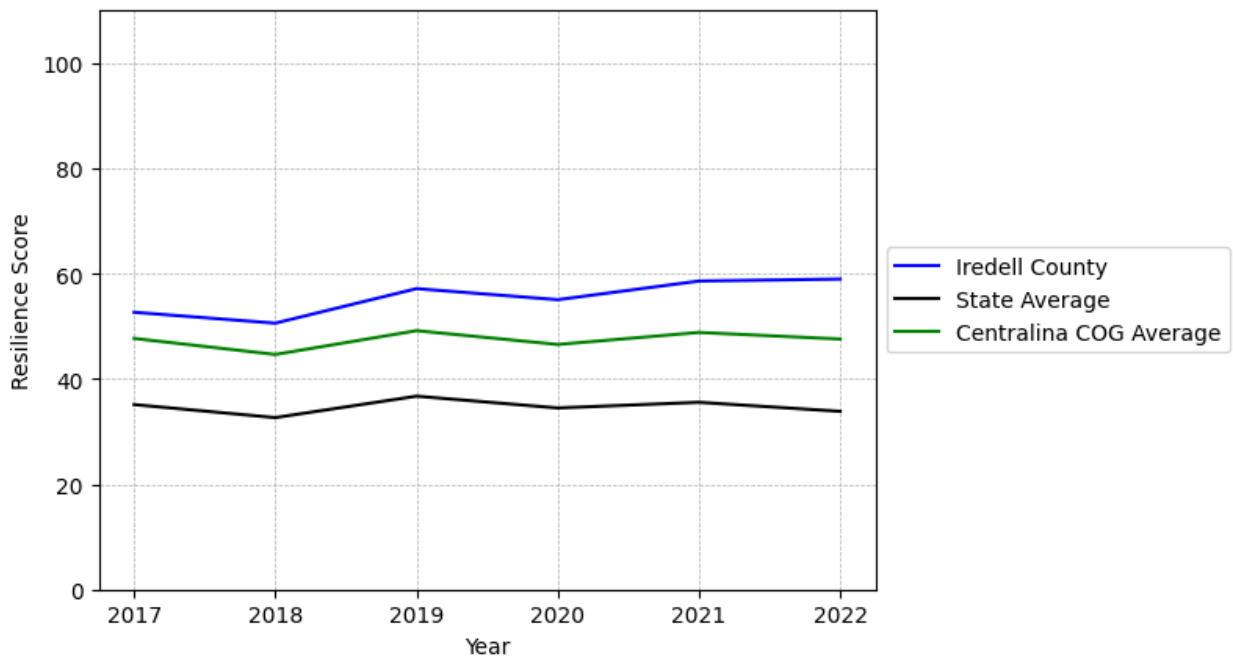


Iredell County Summary

Resilience Score: 58.96

In 2022, Iredell County achieved a Resilience Score of 58.96, which is strong as compared to the North Carolina State average.

**Iredell County's Resilience Score Over Time
As Compared to the Region and State Averages**



Note: Resilience Scores are normalized from 1 to 100 with the most resilient county scoring 100. The Resilience Score is determined based on a county's performance relative to NC's other 99 counties.

Iredell County's Resilience Score is comprised of 9 distinct dimensions of resilience. Below are Iredell County's scores for 2022 on those 9 dimensions, and their rank relative to other North Carolina counties.

Business Community Health: 21.21

This component examines the strength and diversity of the local business community, including factors such as the number of businesses, employment levels, and industry diversity. Iredell County's performance on this dimension is average when compared to other North Carolina counties, ranking 14th in the state.

Notable variables for Iredell County within this dimension include:

VARIABLE STRENGTH	FACTOR	IREDELL COUNTY VALUE	NC COUNTY AVERAGE VALUE
Top 10 in NC, Strongest	Average Weekly Wages	\$1,181	\$951
Top 10 in NC, 2nd Strongest	Real GDP in Current Dollars	\$10,581,864	\$6,092,555
Weakest	Private Sector Diversity	0.093	0.28

County Government Fiscal Strength: 68.2

This component looks at the financial health of local governments, including their ability to generate revenue, manage debt, and maintain adequate reserves to weather economic downturns. Iredell County's performance on this dimension is strong when compared to other North Carolina counties, ranking 12th in the state.

Notable variables for Iredell County within this dimension include:

VARIABLE STRENGTH	FACTOR	IREDELL COUNTY VALUE	NC COUNTY AVERAGE VALUE
Top 10 in NC, Strongest	Dependency Ratio of County Government	0.06	0.16
Top 10 in NC, 2nd Strongest	Capital Assets Condition Ratio of County Government	0.65	0.51
Weakest	Debt Service Ratio of County Government	0.13	0.07

Communication: 78.54

This component assesses the availability and quality of communication infrastructure, such as broadband internet access, which is crucial for businesses and residents to stay connected and resilient during disruptions. Iredell County's performance on this dimension is strong when compared to other North Carolina counties, ranking 11th in the state.

Notable variables for Iredell County within this dimension include:

VARIABLE STRENGTH	FACTOR	IREDELL COUNTY VALUE	NC COUNTY AVERAGE VALUE
Strongest	In-Vehicle High-Speed Mobile Data Availability	0.68	0.37
2nd Strongest	Local High-Speed Mobile Data Availability	0.89	0.66
Weakest	Broadband Availability	0.72	0.6

Housing & Transportation: 89.77

This component evaluates the accessibility and affordability of housing, as well as the availability of reliable transportation options, which are essential for a resilient workforce and economy. Iredell County's performance on this dimension is strong when compared to other North Carolina counties, ranking 7th in the state.

Notable variables for Iredell County within this dimension include:

VARIABLE STRENGTH	FACTOR	IREDELL COUNTY VALUE	NC COUNTY AVERAGE VALUE
Top 10 in NC, Strongest	Average Available Rent Money less the Average HUD Fair Market Rent	\$1,197.5	\$799.87
2nd Strongest	Percentage of Population without Vehicles	3.32%	5.75%
Weakest	Percentage of People Driving Alone to Work	87.51%	86.36%

Healthcare: 29.33

The healthcare component examines the availability and quality of healthcare facilities, services, and professionals, which are critical for maintaining a healthy and productive workforce. Iredell County's performance on this dimension is average when compared to other North Carolina counties, ranking 39th in the state.

Notable variables for Iredell County within this dimension include:

VARIABLE STRENGTH	FACTOR	IREDELL COUNTY VALUE	NC COUNTY AVERAGE VALUE
Strongest	Opioid Deaths per 100,000 Residents	23.7	38.73
2nd Strongest	Nurses per 10,000 Residents	294.19	262.64
Weakest	Nursing Home Beds per 1,000 Residents of Age	17.91	27.53

Community Cohesion: 70.76

This component looks at the strength of social networks, community engagement, and the ability of residents to work together to address challenges and support one another during times of adversity. Iredell County's performance on this dimension is fairly strong when compared to other North Carolina counties, ranking 19th in the state.

Notable variables for Iredell County within this dimension include:

VARIABLE STRENGTH	FACTOR	IREDELL COUNTY VALUE	NC COUNTY AVERAGE VALUE
Strongest	Percentage of Inactive Voters	9.96%	11.3%
2nd Strongest	Violent Crimes per 10,000 Residents	N/A	3.07
Weakest	Nonprofits Organizations per 1,000 Residents	2.93	3.17

Socioeconomics: 73.96

This component considers factors such as income levels, poverty rates, and inequality, which can impact a community's ability to withstand and recover from economic shocks. Iredell County's performance on this dimension is strong when compared to other North Carolina counties, ranking 11th in the state.

Notable variables for Iredell County within this dimension include:

VARIABLE STRENGTH	FACTOR	IREDELL COUNTY VALUE	NC COUNTY AVERAGE VALUE
Top 10 in NC, Strongest	Total Percentage of Population Below 150% Poverty Line	16.32%	25.93%
Top 10 in NC, 2nd Strongest	Percentage of Households with Income over \$200k	10.4%	5.28%
Weakest	Gini Coefficient (Income Inequality)	0.46	0.46

Education: 54.51

This component evaluates the quality of educational institutions and the educational attainment levels of the local population, which play a crucial role in developing a skilled and adaptable workforce. Iredell County's performance on this dimension is average when compared to other North Carolina counties, ranking 33rd in the state.

Notable variables for Iredell County within this dimension include:

VARIABLE STRENGTH	FACTOR	IREDELL COUNTY VALUE	NC COUNTY AVERAGE VALUE
Top 10 in NC, Strongest	Graduation Percentage	94.7%	88.03%
2nd Strongest	3rd Grade Reading Proficiency	53.28%	43.1%
Bottom 10 in NC, Weakest	Student to Teacher Ratio	16	14

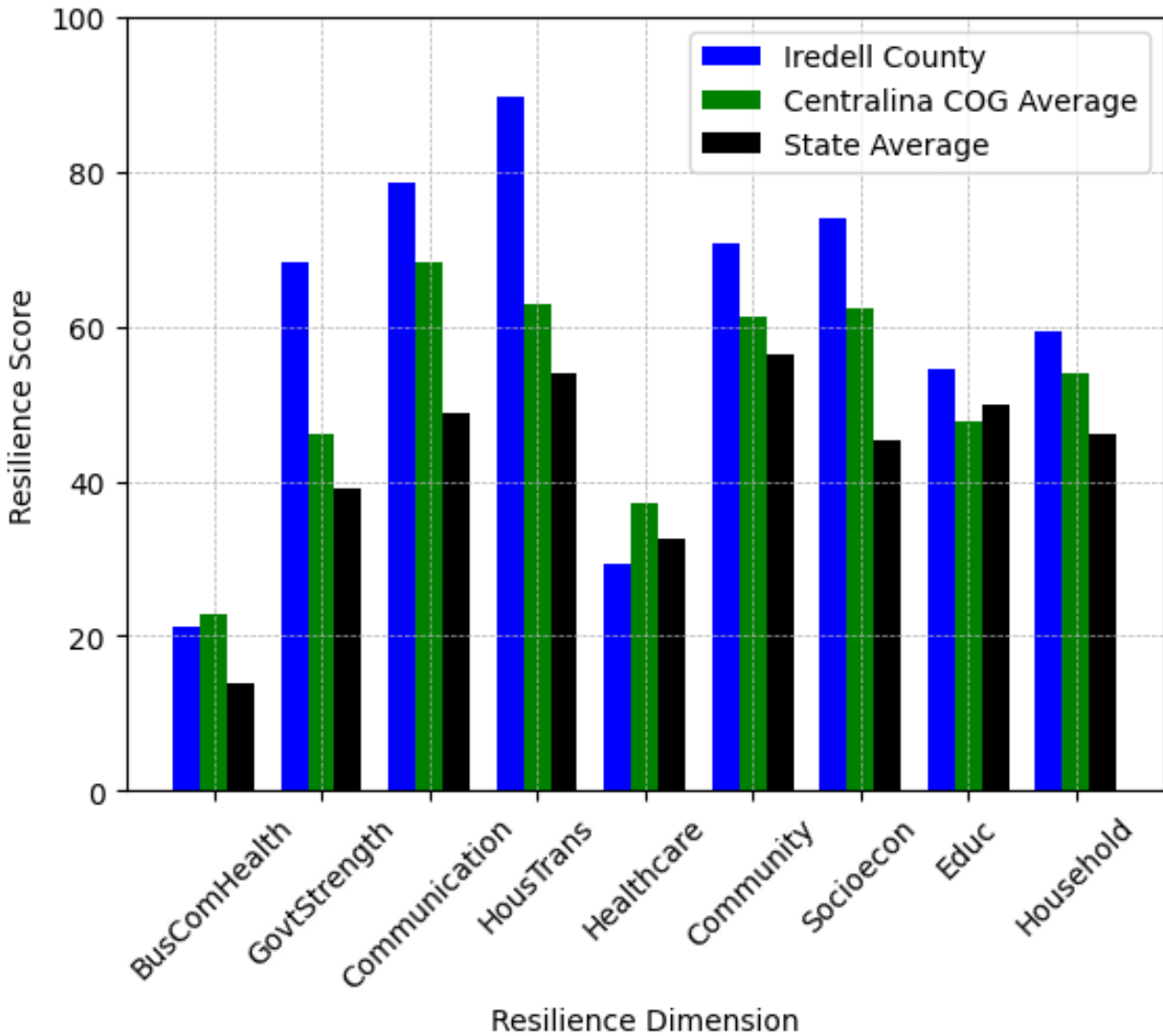
Household Characteristics: 59.45

This component examines factors such as the proportion of single-parent households, age distribution, and the proportion of individuals with disabilities, as these elements can influence a community's resilience and ability to recover from economic disruptions. Iredell County's performance on this dimension is strong when compared to other North Carolina counties, ranking 14th in the state.

Notable variables for Iredell County within this dimension include:

VARIABLE STRENGTH	FACTOR	IREDELL COUNTY VALUE	NC COUNTY AVERAGE VALUE
Top 10 in NC, Strongest	Percentage of Population with a Disability	11.801%	16.566%
2nd Strongest	Percentage of Population 65 and Older	16.34%	20.53%
Weakest	Percentage of Population 17 and Younger	22.47%	20.37%

Iredell County's Resilience Dimension Scores Over Time As Compared to the Region and State Averages



Note: Resilience Scores are normalized from 1 to 100 with the most resilient county scoring 100. The Resilience Score is determined based on a county's performance relative to NC's other 99 counties.

Notable Trends in Resilience Indicators, 2017-2022

NOTE: The key trends in the this section are identified based on change rates of at least .15 standard deviations over at least 5 years. Variables are positively oriented such that a positive trend indicates improved performance (e.g., 'improvement' in property crime is a lower crime rate, while 'decline' in property crime indicates a higher crime rate).

Trends in the Business Community Health dimension:

Total Employment Level: **7,988** (5-year change rate = **11%**, from 72,633 to 80,621)

↑ Change in rank from 13 to 11 in NC

Average Weekly Wages: **263 dollars** (5-year change rate = **28.65%**, from 918 to 1,181)

↑ Change in rank from 7 to 6 in NC

Real GDP in Current Dollars: **1,939,041 dollars** (5-year change rate = **22.44%**, from 8,642,823 to 10,581,864)

↑ Change in rank from 11 to 9 in NC

Trends in the County Government Fiscal Strength dimension:

Adjusted Tax Base: **17,788 dollars** (5-year change rate = **14.57%**, from 122,084 to 139,872)

↑ Change in rank from 23 to 22 in NC

County Sales Tax: **20,376,704 dollars** (5-year change rate = **55.45%**, from 36,744,792 to 57,121,496)

→ No change in rank

Trends in the Housing & Transportation dimension:

Ratio of Average Estimated Home Value to Median Income : **0.88** (5-year change rate = **32.04%**, from 2.74 to 3.61)

↑ Change in rank from 21 to 20 in NC

Average Available Rent Money less the Average HUD Fair Market Rent: **506.2 dollars** (5-year change rate = **73.22%**, from 691.3 to 1,197.5)

↑ Change in rank from 14 to 6 in NC

Trends in the Healthcare dimension:

Opioid Deaths per 100,000 Residents: **1.5** (5-year change rate = **6.76%**, from 22.2 to 23.7)

↑ Change in rank from 48 to 17 in NC

Physicians per 10,000 Residents: **-0.52** (5-year change rate = **-2.73%**, from 19.08 to 18.56)

↑ Change in rank from 25 to 23 in NC

Mental Health Professionals per 10,000 Residents: **1.05** (5-year change rate = **18.32%**, from 5.73 to 6.78)

↑ Change in rank from 45 to 37 in NC

Trends in the Community Cohesion dimension:

Nonprofits Organizations per 1,000 Residents: **0.51** (5-year change rate = **21.29%**, from 2.42 to 2.93)

↑ Change in rank from 66 to 57 in NC

Trends in the Socioeconomics dimension:

Unemployment Rate (Q4): **-0.7 percent** (5-year change rate = **-17.5%**, from 4 to 3.3)

↑ Change in rank from 31 to 21 in NC

Median Household Income: **25,200 dollars** (5-year change rate = **38.47%**, from 65,500 to 90,700)

↑ Change in rank from 16 to 12 in NC

Trends in the Education dimension:

Graduation Percentage: **4.7 percent** (5-year change rate = **5.22%**, from 90 to 94.7)

↑ Change in rank from 32 to 3 in NC

Dropout Rate: **-0.54 percent** (5-year change rate = **-24.34%**, from 2.21 to 1.67)

↓ Change in rank from 51 to 53 in NC

3rd Grade Reading Proficiency: **-7.74 percent** (5-year change rate = **-12.69%**, from 61.02 to 53.28)

↑ Change in rank from 20 to 18 in NC

Data Advisements:

- Availability of Broadband Services is not available for 2022 and was excluded from calculating this county's dimension and resilience score.
- Adoption Rate of Broadband Services is not available for 2022 and was excluded from calculating this county's dimension and resilience score.
- Violent Crimes per 10,000 Residents is not available for 2022 and was excluded from calculating this county's dimension and resilience score.
- Property Crimes per 10,000 Residents is not available for 2022 and was excluded from calculating this county's dimension and resilience score.