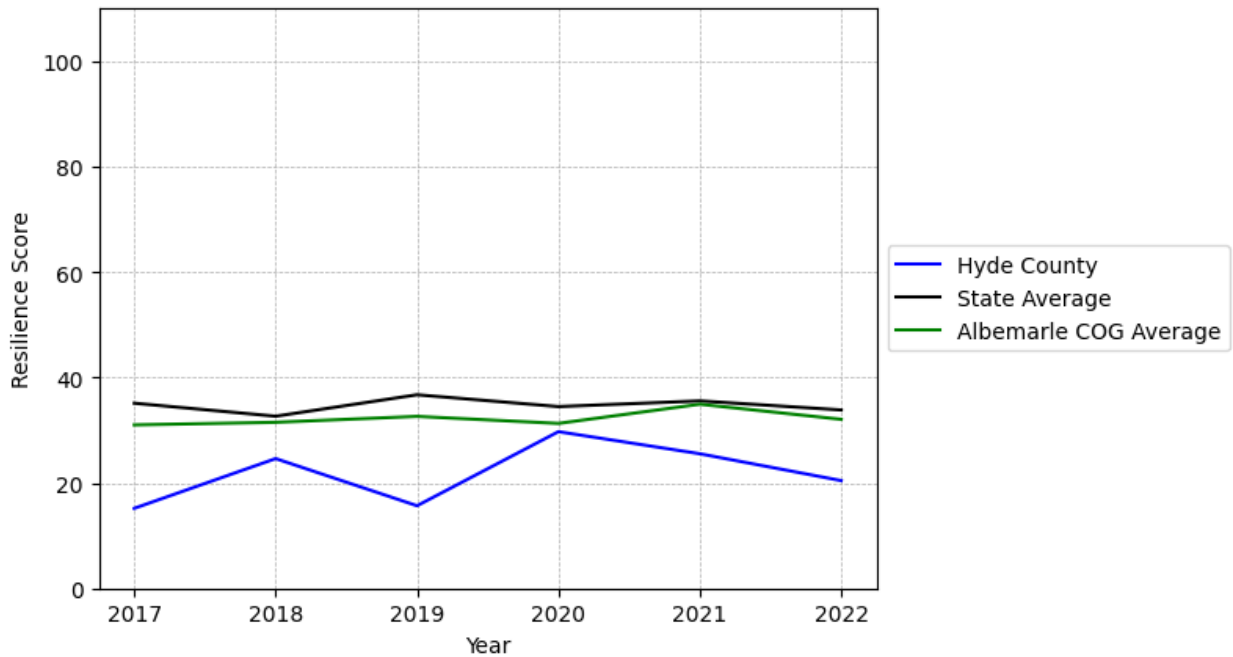


Hyde County Summary

Resilience Score: 20.44

In 2022, Hyde County achieved a Resilience Score of 20.44, which is fairly weak as compared to the North Carolina State average.

**Hyde County's Resilience Score Over Time
As Compared to the Region and State Averages**



Note: Resilience Scores are normalized from 1 to 100 with the most resilient county scoring 100. The Resilience Score is determined based on a county's performance relative to NC's other 99 counties.

Hyde County's Resilience Score is comprised of 9 distinct dimensions of resilience. Below are Hyde County's scores for 2022 on those 9 dimensions, and their rank relative to other North Carolina counties.

Business Community Health: 7.76

This component examines the strength and diversity of the local business community, including factors such as the number of businesses, employment levels, and industry diversity. Hyde County's performance on this dimension is average when compared to other North Carolina counties, ranking 74th in the state.

Notable variables for Hyde County within this dimension include:

VARIABLE STRENGTH	FACTOR	HYDE COUNTY VALUE	NC COUNTY AVERAGE VALUE
Top 10 in NC, Strongest	Private Sector Diversity	0.553	0.28
2nd Strongest	Ratio of Available Child Care Slots to Number of Children under Five	0.56	0.59
Bottom 10 in NC	Average Weekly Wages	\$78	\$951
Bottom 10 in NC	Total Employment Level	1,679	45,758
Bottom 10 in NC	Real GDP in Current Dollars	\$177,923	\$6,092,555
Bottom 10 in NC	Percentage of Companies in Science, Engineering, & Technology Industries	2.01%	6.13%
Weakest	Science, Engineering, & Technology Industries Employment Percentage	N/A	1.79%

County Government Fiscal Strength: 52.15

This component looks at the financial health of local governments, including their ability to generate revenue, manage debt, and maintain adequate reserves to weather economic downturns. Hyde County's performance on this dimension is average when compared to other North Carolina counties, ranking 31st in the state.

Notable variables for Hyde County within this dimension include:

VARIABLE STRENGTH	FACTOR	HYDE COUNTY VALUE	NC COUNTY AVERAGE VALUE
Top 10 in NC, Strongest	Adjusted Tax Base	\$449,398	\$124,092
2nd Strongest	Capital Assets Condition Ratio of County Government	0.59	0.51
Bottom 10 in NC	Quick Ratio of County Government	4.43	16.4
Bottom 10 in NC	County Sales Tax	\$2,018,201	\$31,151,902
Bottom 10 in NC, Weakest	Operations Ratio of County Government	0.92	1.11

Communication: 1

This component assesses the availability and quality of communication infrastructure, such as broadband internet access, which is crucial for businesses and residents to stay connected and resilient during disruptions. Hyde County's performance on this dimension is weak when compared to other North Carolina counties, ranking 100th in the state.

Notable variables for Hyde County within this dimension include:

VARIABLE STRENGTH	FACTOR	HYDE COUNTY VALUE	NC COUNTY AVERAGE VALUE
Strongest	Percentage of Population without Smartphones	23.18%	17.22%
Bottom 10 in NC, 2nd Strongest	Local High-Speed Mobile Data Availability	0.17	0.66
Bottom 10 in NC	In-Vehicle High-Speed Mobile Data Availability	0.05	0.37
Bottom 10 in NC, Weakest	Broadband Availability	0.06	0.6

Housing & Transportation: 73.61

This component evaluates the accessibility and affordability of housing, as well as the availability of reliable transportation options, which are essential for a resilient workforce and economy. Hyde County's performance on this dimension is fairly strong when compared to other North Carolina counties, ranking 26th in the state.

Notable variables for Hyde County within this dimension include:

VARIABLE STRENGTH	FACTOR	HYDE COUNTY VALUE	NC COUNTY AVERAGE VALUE
Top 10 in NC, Strongest	Percentage of Households with More Residents than Rooms	0%	2.1%
Top 10 in NC, 2nd Strongest	Percentage of People Driving Alone to Work	76.39%	86.36%
Top 10 in NC	Percentage of Population without Vehicles	2.2%	5.75%
Bottom 10 in NC, Weakest	Ratio of Average Estimated Home Value to Median Income	52.6	13.67

Healthcare: 34.41

The healthcare component examines the availability and quality of healthcare facilities, services, and professionals, which are critical for maintaining a healthy and productive workforce. Hyde County's performance on this dimension is average when compared to other North Carolina counties, ranking 24th in the state.

Notable variables for Hyde County within this dimension include:

VARIABLE STRENGTH	FACTOR	HYDE COUNTY VALUE	NC COUNTY AVERAGE VALUE
Top 10 in NC, Strongest	Nursing Home Beds per 1,000 Residents of Age 65+	45.66	27.53
2nd Strongest	Opioid Deaths per 100,000 Residents	20.3	38.73
Bottom 10 in NC, Weakest	Nurses per 10,000 Residents	55.56	262.64

Community Cohesion: 100

This component looks at the strength of social networks, community engagement, and the ability of residents to work together to address challenges and support one another during times of adversity. Hyde County's performance on this dimension is strong when compared to other North Carolina counties, ranking 1st in the state.

Notable variables for Hyde County within this dimension include:

VARIABLE STRENGTH	FACTOR	HYDE COUNTY VALUE	NC COUNTY AVERAGE VALUE
Top 10 in NC, Strongest	Violent Crimes per 10,000 Residents	0	3.07
Top 10 in NC, 2nd Strongest	Property Crimes per 10,000 Residents	0	15.74
Top 10 in NC	Nonprofits Organizations per 1,000 Residents	10.11	3.17
Weakest	Yearly Population Change Percentage	-0.044%	0.906%

Socioeconomics: 6.39

This component considers factors such as income levels, poverty rates, and inequality, which can impact a community's ability to withstand and recover from economic shocks. Hyde County's

performance on this dimension is weak when compared to other North Carolina counties, ranking 96th in the state.

Notable variables for Hyde County within this dimension include:

VARIABLE STRENGTH	FACTOR	HYDE COUNTY VALUE	NC COUNTY AVERAGE VALUE
Top 10 in NC, Strongest	Gini Coefficient (Income Inequality)	0.4	0.46
2nd Strongest	Percentage of Population without Health Insurance	13.76%	11.23%
Bottom 10 in NC	Population 25+ with at least a Bachelor's Degree	14.25%	24.4%
Bottom 10 in NC	Unemployment Rate (Q4)	5.4%	3.9%
Bottom 10 in NC	Total Percentage of Population Below 150% Poverty Line	36.96%	25.93%
Bottom 10 in NC	Percentage of Population without a High School Diploma	15.16%	9.05%
Bottom 10 in NC	Percentage of Households Spending more than 30% Income on Housing	34.82%	24.53%
Bottom 10 in NC, Weakest	Percentage of Households with Income over \$200k	0.25%	5.28%

Education: 57.3

This component evaluates the quality of educational institutions and the educational attainment levels of the local population, which play a crucial role in developing a skilled and adaptable workforce. Hyde County's performance on this dimension is fairly strong when compared to other North Carolina counties, ranking 26th in the state.

Notable variables for Hyde County within this dimension include:

VARIABLE STRENGTH	FACTOR	HYDE COUNTY VALUE	NC COUNTY AVERAGE VALUE
Top 10 in NC, Strongest	Graduation Percentage	100%	88.03%
Top 10 in NC, 2nd Strongest	Student to Teacher Ratio	9	14
Bottom 10 in NC, Weakest	Postsecondary Enrollment Percentage	6.67%	25.48%

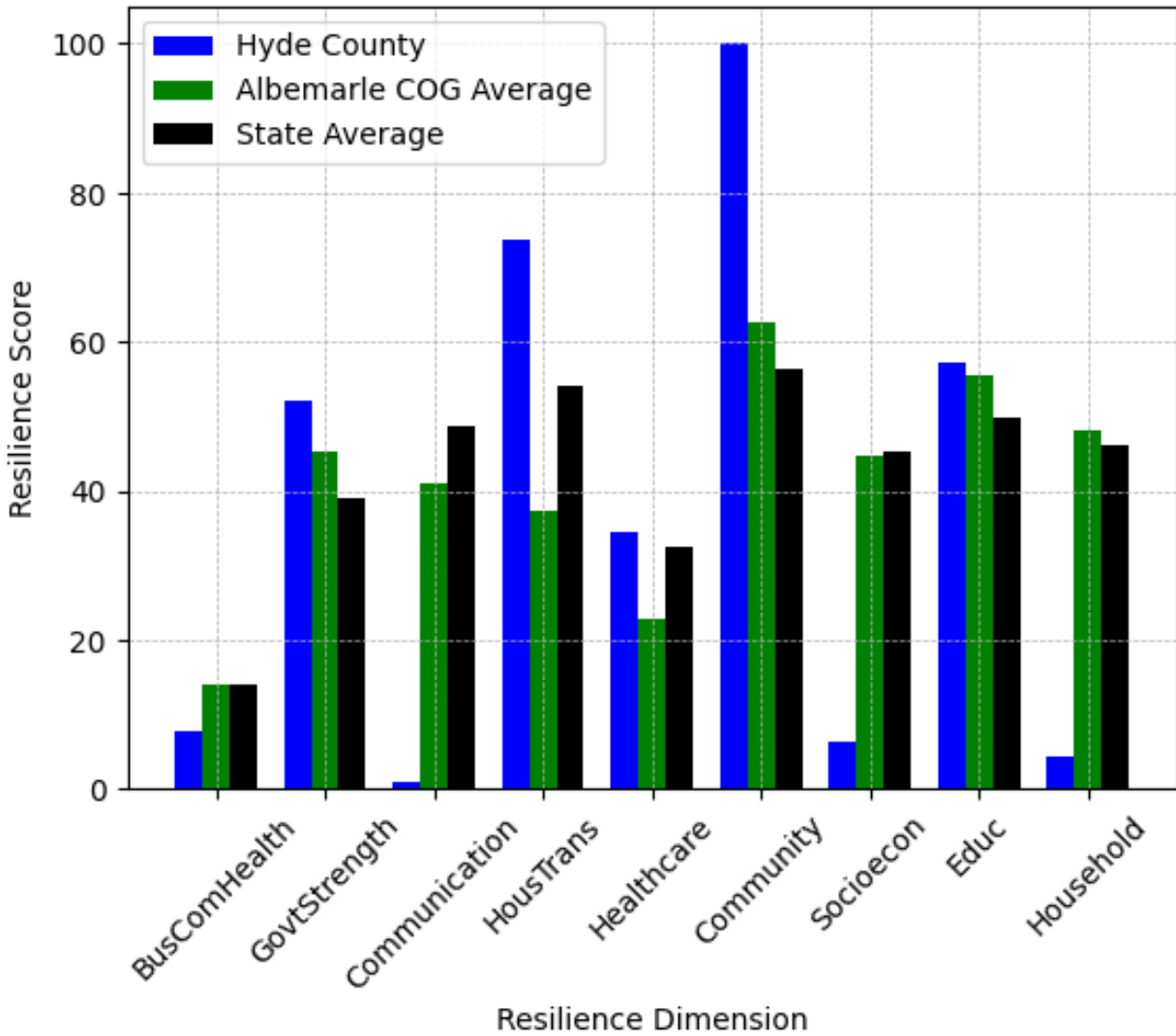
Household Characteristics: 4.37

This component examines factors such as the proportion of single-parent households, age distribution, and the proportion of individuals with disabilities, as these elements can influence a community's resilience and ability to recover from economic disruptions. Hyde County's performance on this dimension is weak when compared to other North Carolina counties, ranking 99th in the state.

Notable variables for Hyde County within this dimension include:

VARIABLE STRENGTH	FACTOR	HYDE COUNTY VALUE	NC COUNTY AVERAGE VALUE
Strongest	Percentage of Population 17 and Younger	19.74%	20.37%
2nd Strongest	Percentage of Population with a Disability	18.803%	16.566%
Bottom 10 in NC, Weakest	Percentage of Single Parent Households	79.781%	36.132%

Hyde County's Resilience Dimension Scores Over Time As Compared to the Region and State Averages



Note: Resilience Scores are normalized from 1 to 100 with the most resilient county scoring 100. The Resilience Score is determined based on a county's performance relative to NC's other 99 counties.

Notable Trends in Resilience Indicators, 2017-2022

NOTE: The key trends in the this section are identified based on change rates of at least .15 standard deviations over at least 5 years. Variables are positively oriented such that a positive trend indicates improved performance (e.g., 'improvement' in property crime is a lower crime rate, while 'decline' in property crime indicates a higher crime rate).

Trends in the Business Community Health dimension:

Total Employment Level: **-277** (5-year change rate = **-14.18%**, from 1,956 to 1,679)

↓ Change in rank from 94 to 96 in NC

Average Weekly Wages: **168 dollars** (5-year change rate = **27.45%**, from 612 to 780)

↑ Change in rank from 100 to 95 in NC

Real GDP in Current Dollars: **6,927 dollars** (5-year change rate = **4.05%**, from 170,996 to 177,923)

→ No change in rank

Trends in the County Government Fiscal Strength dimension:

Adjusted Tax Base: **239,274 dollars** (5-year change rate = **113.87%**, from 210,124 to 449,398)

↑ Change in rank from 5 to 1 in NC

County Sales Tax: **609,500 dollars** (5-year change rate = **43.27%**, from 1,408,701 to 2,018,201)

→ No change in rank

Trends in the Housing & Transportation dimension:

Ratio of Average Estimated Home Value to Median Income : **8.46** (5-year change rate = **19.16%**, from 44.14 to 52.6)

→ No change in rank

Average Available Rent Money less the Average HUD Fair Market Rent: **251.7 dollars** (5-year change rate = **84.52%**, from 297.8 to 549.5)

↑ Change in rank from 94 to 80 in NC

Trends in the Healthcare dimension:

Opioid Deaths per 100,000 Residents: **-35.6** (5-year change rate = **-63.69%**, from 55.9 to 20.3)

↑ Change in rank from 99 to 11 in NC

Nurses per 10,000 Residents: **-11.43** (5-year change rate = **-17.06%**, from 66.99 to 55.56)

↓ Change in rank from 91 to 92 in NC

Physicians per 10,000 Residents: **4.59** (5-year change rate = **229.5%**, from 2 to 6.59)

↑ Change in rank from 96 to 83 in NC

Mental Health Professionals per 10,000 Residents: **2.4** (5-year change rate = **120%**, from 2 to 4.4)

↑ Change in rank from 95 to 67 in NC

Trends in the Community Cohesion dimension:

Nonprofits Organizations per 1,000 Residents: **1.46** (5-year change rate = **16.91%**, from 8.65 to 10.11)

→ No change in rank

Trends in the Socioeconomics dimension:

Unemployment Rate (Q4): **-1.9 percent** (5-year change rate = **-25.91%**, from 7.3 to 5.4)

↑ Change in rank from 99 to 94 in NC

Median Household Income: **4,500 dollars** (5-year change rate = **9.04%**, from 49,800 to 54,300)

↓ Change in rank from 60 to 89 in NC

Trends in the Education dimension:

Graduation Percentage: **8.7 percent** (5-year change rate = **9.53%**, from 91.3 to 100)

↑ Change in rank from 20 to 1 in NC

Dropout Rate: **0.39 percent** (5-year change rate = **17.67%**, from 2.2 to 2.59)

↓ Change in rank from 49 to 87 in NC

Student to Teacher Ratio: **-1** (4-year change rate = **-5.39%**, from 10 to 9)

→ No change in rank

3rd Grade Reading Proficiency: **-17.8 percent** (5-year change rate = **-34.23%**, from 52 to 34.2)

↓ Change in rank from 56 to 82 in NC

Data Advisements:

- This county has a population under 20,000 residents according to the US Census Bureau; in low population areas, some variable estimates can be less stable and more sensitive to changes.
- Science, Engineering, & Technology Industries Employment Percentage is not available for 2022 and was excluded from calculating this county's dimension and resilience score.
- Availability of Broadband Services is not available for 2022 and was excluded from calculating this county's dimension and resilience score.
- Adoption Rate of Broadband Services is not available for 2022 and was excluded from calculating this county's dimension and resilience score.