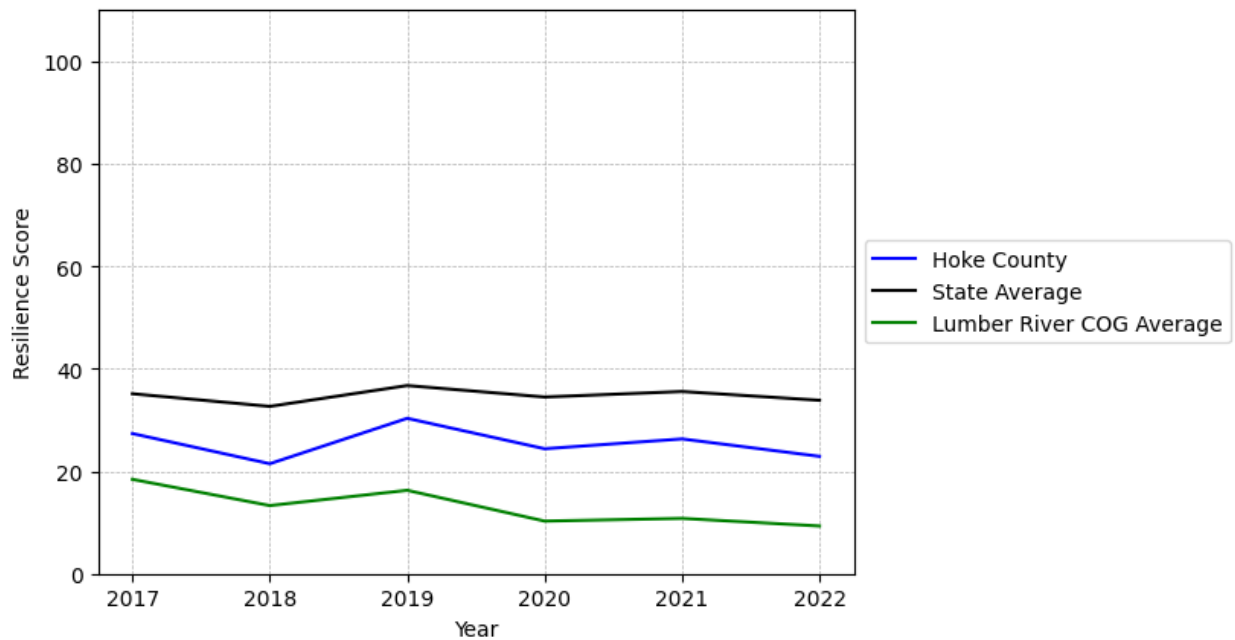


Hoke County Summary

Resilience Score: 22.9

In 2022, Hoke County achieved a Resilience Score of 22.9, which is fairly weak as compared to the North Carolina State average.

**Hoke County's Resilience Score Over Time
As Compared to the Region and State Averages**



Note: Resilience Scores are normalized from 1 to 100 with the most resilient county scoring 100. The Resilience Score is determined based on a county's performance relative to NC's other 99 counties.

Hoke County's Resilience Score is comprised of 9 distinct dimensions of resilience. Below are Hoke County's scores for 2022 on those 9 dimensions, and their rank relative to other North Carolina counties.

Business Community Health: 13.99

This component examines the strength and diversity of the local business community, including factors such as the number of businesses, employment levels, and industry diversity. Hoke County's performance on this dimension is average when compared to other North Carolina counties, ranking 33rd in the state.

Notable variables for Hoke County within this dimension include:

VARIABLE STRENGTH	FACTOR	HOKE COUNTY VALUE	NC COUNTY AVERAGE VALUE
Strongest	Percentage of Companies in Science, Engineering, & Technology Industries	9.09%	6.13%
2nd Strongest	Private Sector Diversity	0.344	0.28
Weakest	Science, Engineering, & Technology Industries Employment Percentage	0.26%	1.79%

County Government Fiscal Strength: 55.86

This component looks at the financial health of local governments, including their ability to generate revenue, manage debt, and maintain adequate reserves to weather economic downturns. Hoke County's performance on this dimension is fairly strong when compared to other North Carolina counties, ranking 27th in the state.

Notable variables for Hoke County within this dimension include:

VARIABLE STRENGTH	FACTOR	HOKE COUNTY VALUE	NC COUNTY AVERAGE VALUE
Top 10 in NC, Strongest	Solvency Ratio of County Government	72.18	46.7
2nd Strongest	Capital Assets Condition Ratio of County Government	0.61	0.51
Bottom 10 in NC, Weakest	Adjusted Tax Base	\$71,994	\$124,092

Communication: 50.36

This component assesses the availability and quality of communication infrastructure, such as broadband internet access, which is crucial for businesses and residents to stay connected and resilient during disruptions. Hoke County's performance on this dimension is average when compared to other North Carolina counties, ranking 50th in the state.

Notable variables for Hoke County within this dimension include:

VARIABLE STRENGTH	FACTOR	HOKE COUNTY VALUE	NC COUNTY AVERAGE VALUE
Strongest	Local High-Speed Mobile Data Availability	0.7	0.66
2nd Strongest	Percentage of Population without Smartphones	15.96%	17.22%
Weakest	In-Vehicle High-Speed Mobile Data Availability	0.27	0.37

Housing & Transportation: 75.22

This component evaluates the accessibility and affordability of housing, as well as the availability of reliable transportation options, which are essential for a resilient workforce and economy. Hoke County's performance on this dimension is fairly strong when compared to other North Carolina counties, ranking 24th in the state.

Notable variables for Hoke County within this dimension include:

VARIABLE STRENGTH	FACTOR	HOKE COUNTY VALUE	NC COUNTY AVERAGE VALUE
Top 10 in NC, Strongest	Percentage of Homes Built Before 1980	20.51%	40.9%
2nd Strongest	Percentage of Owner-Occupied Homes	63.58%	57.87%
Weakest	Average Available Rent Money less the Average HUD Fair Market Rent	\$677.7	\$799.87

Healthcare: 14.68

The healthcare component examines the availability and quality of healthcare facilities, services, and professionals, which are critical for maintaining a healthy and productive workforce. Hoke County's performance on this dimension is fairly weak when compared to other North Carolina counties, ranking 89th in the state.

Notable variables for Hoke County within this dimension include:

VARIABLE STRENGTH	FACTOR	HOKE COUNTY VALUE	NC COUNTY AVERAGE VALUE
Strongest	Opioid Deaths per 100,000 Residents	38	38.73
2nd Strongest	Nurses per 10,000	100.05	262.64

Weakest	Residents Mental Health Professionals per 10,000 Residents	2.53	6.6
----------------	---	------	-----

Community Cohesion: 34.53

This component looks at the strength of social networks, community engagement, and the ability of residents to work together to address challenges and support one another during times of adversity. Hoke County's performance on this dimension is weak when compared to other North Carolina counties, ranking 90th in the state.

Notable variables for Hoke County within this dimension include:

VARIABLE STRENGTH	FACTOR	HOKE COUNTY VALUE	NC COUNTY AVERAGE VALUE
Strongest	Yearly Population Change Percentage	1.491%	0.906%
2nd Strongest	Property Crimes per 10,000 Residents	15.02	15.74
Bottom 10 in NC	Violent Crimes per 10,000 Residents	6.85	3.07
Bottom 10 in NC, Weakest	Percentage of Inactive Voters	17.43%	11.3%

Socioeconomics: 31.48

This component considers factors such as income levels, poverty rates, and inequality, which can impact a community's ability to withstand and recover from economic shocks. Hoke County's performance on this dimension is fairly weak when compared to other North Carolina counties, ranking 74th in the state.

Notable variables for Hoke County within this dimension include:

VARIABLE STRENGTH	FACTOR	HOKE COUNTY VALUE	NC COUNTY AVERAGE VALUE
Strongest	Percentage of Population without a High School Diploma	7.17%	9.05%
2nd Strongest	Percentage of Households with Income over \$200k	4.33%	5.28%
Weakest	Percentage of Households Spending more than 30% Income on Housing	29.78%	24.53%

Education: 29.92

This component evaluates the quality of educational institutions and the educational attainment levels of the local population, which play a crucial role in developing a skilled and adaptable workforce. Hoke County's performance on this dimension is fairly weak when compared to other North Carolina counties, ranking 80th in the state.

Notable variables for Hoke County within this dimension include:

VARIABLE STRENGTH	FACTOR	HOKE COUNTY VALUE	NC COUNTY AVERAGE VALUE
Strongest	Dropout Rate	1.58%	1.65%
2nd Strongest	Postsecondary Enrollment Percentage	22.87%	25.48%
Bottom 10 in NC, Weakest	Local LEA Financial Resources (per ADM)	\$2,784	\$8,683

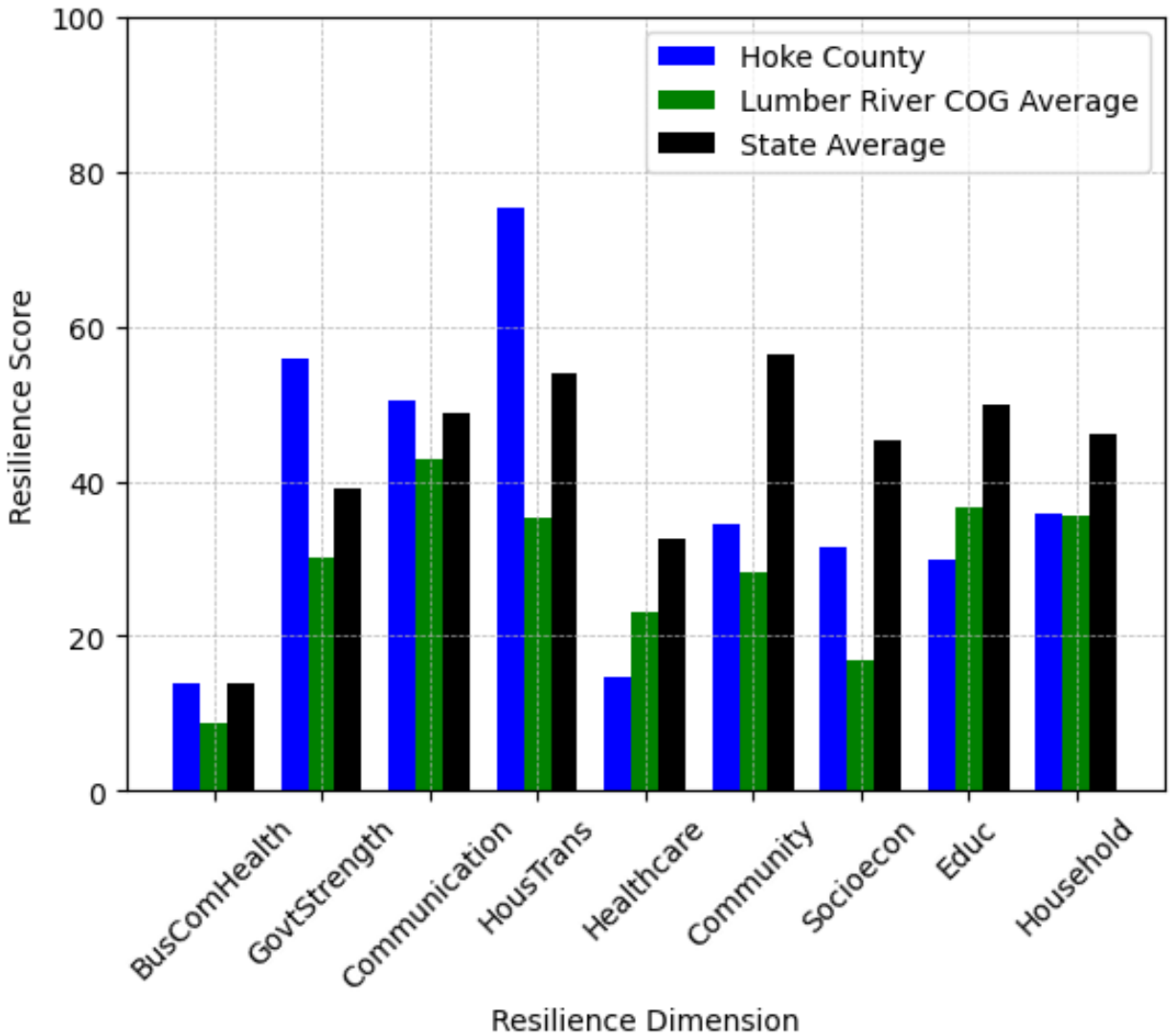
Household Characteristics: 35.9

This component examines factors such as the proportion of single-parent households, age distribution, and the proportion of individuals with disabilities, as these elements can influence a community's resilience and ability to recover from economic disruptions. Hoke County's performance on this dimension is fairly weak when compared to other North Carolina counties, ranking 77th in the state.

Notable variables for Hoke County within this dimension include:

VARIABLE STRENGTH	FACTOR	HOKE COUNTY VALUE	NC COUNTY AVERAGE VALUE
Top 10 in NC, Strongest	Percentage of Population 65 and Older	10.98%	20.53%
2nd Strongest	Percentage of Single Parent Households	32.13%	36.132%
Bottom 10 in NC, Weakest	Percentage of Population 17 and Younger	27.15%	20.37%

Hoke County's Resilience Dimension Scores Over Time As Compared to the Region and State Averages



Note: Resilience Scores are normalized from 1 to 100 with the most resilient county scoring 100. The Resilience Score is determined based on a county's performance relative to NC's other 99 counties.

Notable Trends in Resilience Indicators, 2017-2022

NOTE: The key trends in the this section are identified based on change rates of at least .15 standard deviations over at least 5 years. Variables are positively oriented such that a positive trend indicates improved performance (e.g., 'improvement' in property crime is a lower crime rate, while 'decline' in property crime indicates a higher crime rate).

Trends in the Business Community Health dimension:

Total Employment Level: **442** (5-year change rate = **5.21%**, from 8,481 to 8,923)

↑ Change in rank from 72 to 71 in NC

Average Weekly Wages: **175 dollars** (5-year change rate = **25.4%**, from 689 to 864)

↓ Change in rank from 69 to 76 in NC

Real GDP in Current Dollars: **155,575 dollars** (5-year change rate = **15.44%**, from 1,007,306 to 1,162,881)

→ No change in rank

Trends in the County Government Fiscal Strength dimension:

Adjusted Tax Base: **7,708 dollars** (5-year change rate = **11.99%**, from 64,286 to 71,994)

↓ Change in rank from 91 to 94 in NC

County Sales Tax: **4,174,116 dollars** (5-year change rate = **63.85%**, from 6,537,028 to 10,711,143)

↑ Change in rank from 69 to 68 in NC

Trends in the Housing & Transportation dimension:

Ratio of Average Estimated Home Value to Median Income : **1.68** (5-year change rate = **21.18%**, from 7.93 to 9.6)

↑ Change in rank from 59 to 56 in NC

Average Available Rent Money less the Average HUD Fair Market Rent: **85.3 dollars** (5-year change rate = **14.4%**, from 592.4 to 677.7)

↓ Change in rank from 31 to 66 in NC

Trends in the Healthcare dimension:

Opioid Deaths per 100,000 Residents: **26.9** (5-year change rate = **242.34%**, from 11.1 to 38)

↓ Change in rank from 11 to 56 in NC

Nurses per 10,000 Residents: **-7.13** (5-year change rate = **-6.65%**, from 107.18 to 100.05)

↑ Change in rank from 73 to 71 in NC

Physicians per 10,000 Residents: **-1.03** (5-year change rate = **-20.52%**, from 5.02 to 3.99)

↓ Change in rank from 82 to 88 in NC

Mental Health Professionals per 10,000 Residents: **0.21** (5-year change rate = **9.05%**, from 2.32 to 2.53)

↑ Change in rank from 94 to 90 in NC

Trends in the Community Cohesion dimension:

Violent Crimes per 10,000 Residents: **5.97** (4-year change rate = **675.51%**, from 0.88 to 6.85)

↓ Change in rank from 13 to 91 in NC

Property Crimes per 10,000 Residents: **-6.03** (4-year change rate = **-28.64%**, from 21.05 to 15.02)

↑ Change in rank from 59 to 55 in NC

Nonprofits Organizations per 1,000 Residents: **0.41** (5-year change rate = **18.45%**, from 2.22 to 2.63)

↑ Change in rank from 71 to 62 in NC

Trends in the Socioeconomics dimension:

Unemployment Rate (Q4): **-0.5 percent** (5-year change rate = **-8.75%**, from 5.3 to 4.9)

↓ Change in rank from 80 to 88 in NC

Median Household Income: **8,100 dollars** (5-year change rate = **14.78%**, from 54,800 to 62,900)

↓ Change in rank from 40 to 61 in NC

Trends in the Education dimension:

Graduation Percentage: **0.9 percent** (5-year change rate = **1.09%**, from 82.6 to 83.5)

↓ Change in rank from 85 to 88 in NC

Dropout Rate: **-0.18 percent** (5-year change rate = **-10.35%**, from 1.76 to 1.58)

↓ Change in rank from 31 to 47 in NC

Student to Teacher Ratio: **-3** (4-year change rate = **-18.63%**, from 18 to 14)

↑ Change in rank from 97 to 52 in NC

3rd Grade Reading Proficiency: **-13.4 percent** (5-year change rate = **-26.75%**, from 50.1 to 36.7)

↓ Change in rank from 69 to 72 in NC

Data Advisements:

- Availability of Broadband Services is not available for 2022 and was excluded from calculating this county's dimension and resilience score.
- Adoption Rate of Broadband Services is not available for 2022 and was excluded from calculating this county's dimension and resilience score.